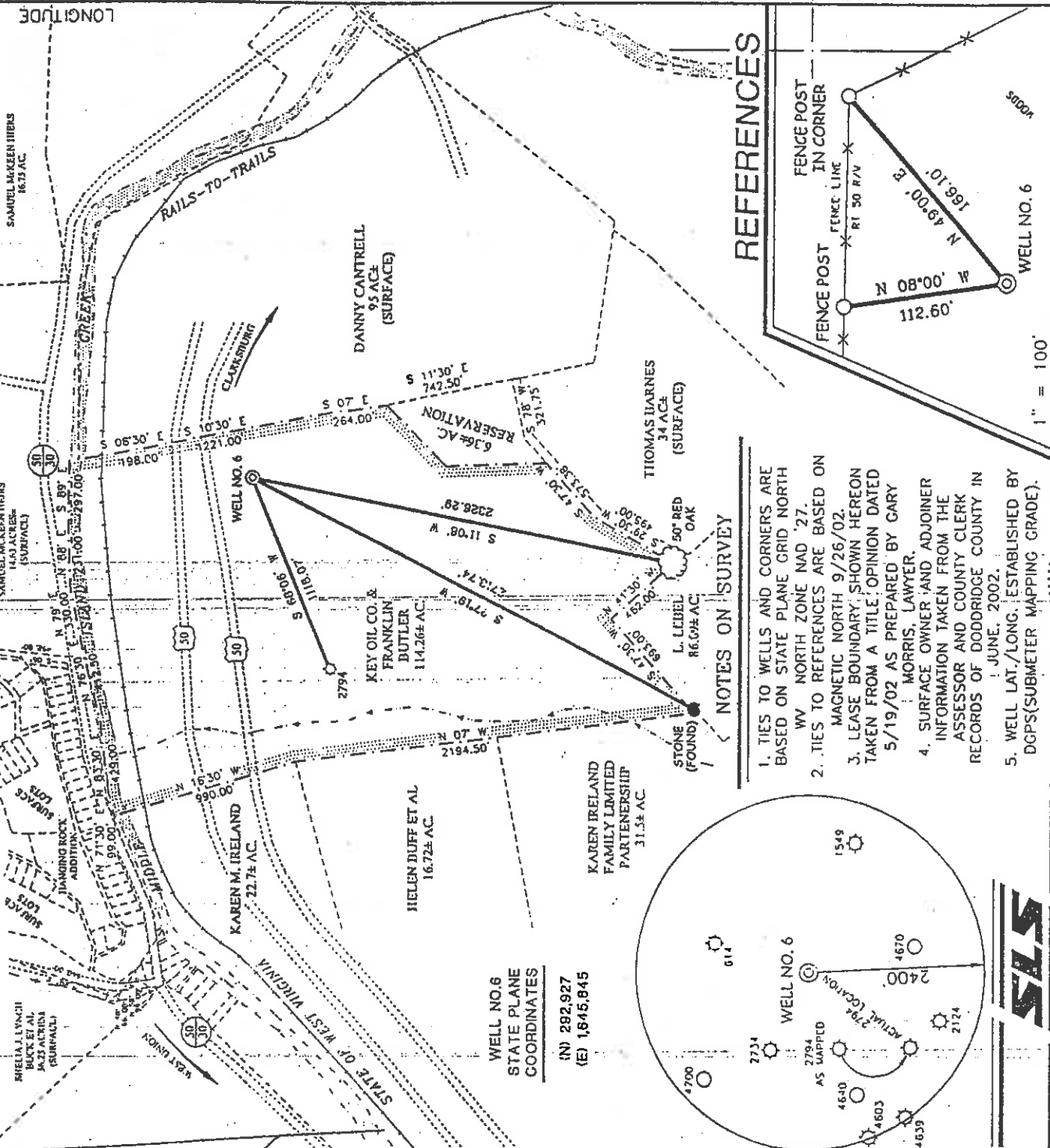
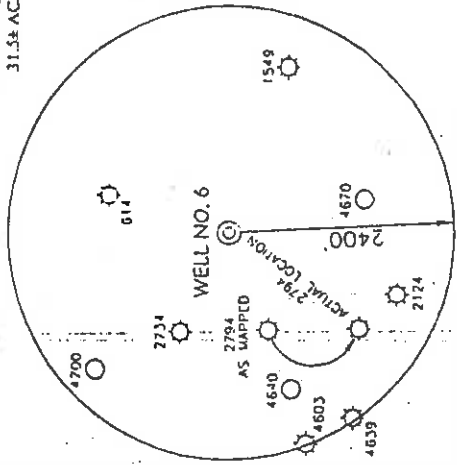


LONG. 80°45'07.7" LATITUDE 39°20'00"

LONGACRE LEASE 114.26 ACRES ± WELL NO. 6



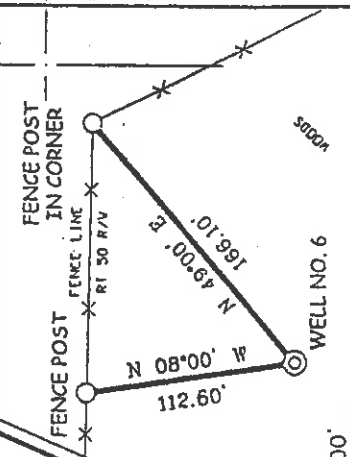
WELL NO. 6
STATE PLANE
COORDINATES
(N) 292,927
(E) 1,845,845



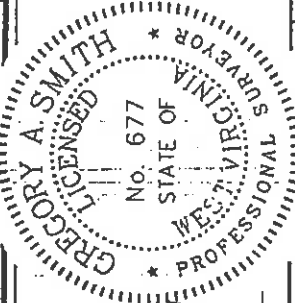
NOTES ON SURVEY

1. TIES TO WELLS AND CORNERS ARE BASED ON STATE PLANE GRID, NORTH WV NORTH ZONE NAD '27. MAGNETIC NORTH 9/26/02.
2. TIES TO REFERENCES ARE BASED ON TAKEN FROM A TITLE OPINION DATED 5/19/02 AS PREPARED BY GARY MORRIS, LAWYER.
3. LEASE BOUNDARY SHOWN HEREON INFORMATION TAKEN FROM THE ASSESSOR AND COUNTY CLERK RECORDS OF DODDRIDGE COUNTY IN JUNE, 2002.
4. SURFACE OWNER AND ADJOINER INFORMATION TAKEN FROM THE ASSESSOR AND COUNTY CLERK RECORDS OF DODDRIDGE COUNTY IN JUNE, 2002.
5. WELL LAT./LONG. ESTABLISHED BY DGPS (SUBMETER MAPPING GRADE).

REFERENCES



I THE UNDERSIGNED, HEREBY CERTIFY THAT THIS PLAN IS CORRECT TO THE BEST OF MY KNOWLEDGE AND BELIEF AND SHOWS ALL THE INFORMATION REQUIRED BY LAW AND THE REGULATIONS ISSUED AND PRESCRIBED BY THE DEPARTMENT OF ENVIRONMENTAL PROTECTION.



P.S. 677 *Gregory A. Smith*

(+) DENOTES LOCATION OF WELL ON UNITED STATES TOPOGRAPHIC MAPS.
DATE SEPTEMBER 30, 20 02
OPERATORS WELL NO. LONGACRE NO. 6
API WELL NO. STATE COUNTY PERMIT
NO. 47-17-04708

MINIMUM DEGREE OF ACCURACY 1 / 200 FILE NO. 503JP6 (135-17)
PROVEN SOURCE SCALE 1" = 800
OF ELEVATION TOP OF KNOB ELEVATION = 1,295'

WELL TYPE : OIL GAS LIQUID WASTE INJECTION DISPOSAL "GAS" PRODUCTION STORAGE DEEP SHALLOW

LOCATION : ELEVATION 995' WATER-SHED MIDDLE ISLAND CREEK
DISTRICT WEST UNION COUNTY DODDRIDGE

SURFACE OWNER KEY OIL COMPANY AND FRANKLIN BUTLER QUADRANGLE WEST UNION 7.5
ROYALTY OWNER KEY OIL COMPANY AND FRANKLIN BUTLER ACREAGE 114.26±
PROPOSED WORK : LEASE ACREAGE 114.26±
LEASE NO. _____

DRILL CONVERT DRILL DEEPER REDRILL FRACTURE OR STIMULATE PLUG OFF OLD
FORMATION PERFORATE NEW FORMATION PLUG AND ABANDON CLEAN OUT AND REPLUG OTHER
PHYSICAL CHANGE IN WELL (SPECIFY) _____ TARGET FORMATION GORDON
ESTIMATED DEPTH 3,000'

WELL OPERATOR KEY OIL COMPANY DESIGNATED AGENT JAN CHAPMAN
ADDRESS 22 GARTON PLAZA WESTON, WV 26452 ADDRESS 22 GARTON PLAZA WESTON, WV 26452



STATE OF WEST VIRGINIA
DIVISION OF ENVIRONMENTAL PROTECTION
OFFICE OF OIL AND GAS

DODD 4708

6-6 (099)

State of West Virginia
Division of Environmental Protection
Section of Oil and Gas

MS

Well Operator's Report of Well Work

Farm Name: FRANKLIN L. BUTLER & KEY OIL COMPANY

Operator Well No. : LONGACRE #6

LOCATION: Elevation: 985'

Quadrangle: WEST UNION

District: WEST UNION

County: DODDRIDGE

Latitude: 11,700 Feet South of 39 Deg. 20 Min. 00 Sec.

Longitude: 2,200 Feet West of 80 Deg. 45 Min. 00 Sec.

Company: KEY OIL COMPANY
22 GARTON PLAZA
WESTON, WV 26452-0000

Agent: JAN E. CHAPMAN

Inspector: MIKE UNDERWOOD
Permit Issued: 10/09/02
Well Work Commenced: 10/15/02
Well Work Completed: 10/18/02

Verbal Plugging

Permission granted on: _____

Rotary X Cable _____ Rig

Total Depth (feet) _____ 2705'

Fresh water depths (ft) _____ 250'

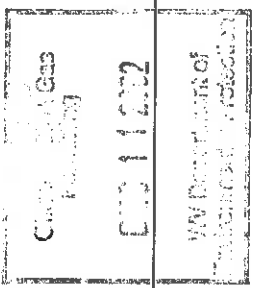
Salt water depths (ft) _____ None

Is coal being mined in area (Y / N)? N

Coal Depths (ft): NONE

OPEN FLOW DATA

Casing & Tubing Size	Used in Drilling	Left In Well	Cement Fill Up Cu. Ft.
8 5/8"	1017'	1017'	230 sks To Surface
4 1/2"	2637'	2637'	250 sks



Keener
Injun
Squaw

Producing formation Gordon

Gas: Initial open flow 207 MCF / d Oil: _____ MCF / d

Final open flow 2,171 MCF / d

Time of open flow between initial and final tests _____

Static rock pressure 400 psig (surface pressure) after 96 Hours

Second producing formation Commingled

Gas: Initial open flow _____ MCF / d Oil: Initial open flow _____ Bbl / d

Final open flow _____ MCF / d Oil: Final open flow _____ Bbl / d

Time of open flow between initial and final tests _____

Static rock pressure _____ psig (surface pressure) after _____ Hours

1816' - 1846'

1846' - 1885'

1891' - 1952'

2504' - 2564'

Pay zone depth (ft)

Initial open flow 0 Bbl / d

Oil: Final open flow _____ Bbl / d

Time of open flow _____ Hours

Static rock pressure _____ psig (surface pressure) after 96 Hours

NOTE: ON BACK OF THIS FORM PUT THE FOLLOWING: 1). DETAILS OF PERFORATED INTERVALS, FRACTURING OR STIMULATING, PHYSICAL CHANGE, ETC. 2). THE WELL LOG WHICH IS A SYSTEMATIC DETAILED GEOLOGICAL RECORD OF ALL FORMATIONS, INCLUDING COAL ENCOUNTERED BY THE WELLBORE.

For: KEY OIL COMPANY

By: *[Signature]*
Date: November 27, 2002

PRESIDENT

0000 4708

JAN 17 2003

Longacre #6 (47-017 -4708)
Two Stage Foam Frac – B.J. Services

1st Stage: Gordon (12 holes) (2530' to 2557') 60 Quality Foam. 500 gal. 15% HCL.
35,000# 20/40 sand, 425,000 SCF N2,
535 bbls foam.

2nd Stage: Squaw (10 holes) (1916' to 1945') 60 Quality Foam. 1,000 gal 15% HCL.
Big Injun (14 holes) (1864' to 1882') 50,000# 20/40 sand, 520,000 SCF N2,
Keener (8 holes) (1826' to 1840') 585 bbls foam.

WELL LOG

KB-GL	0	10
Fill	10	13
Sand	13	18
Shale & Red Rock	18	60
Sand & Shale	60	108
Red Rock	108	118
Sand & Red Rock	118	190
Red Rock	190	199
Sand & Shale	199	270
Red Rock	270	289
Sand & Shale	289	432
Sand	432	461
Sand & Shale	461	555
Red Rock	555	565
Sand & Shale	565	835
Shale & Red Rock	835	852
Sand & Shale	852	1054
Sand	1054	1118
Sand & Shale	1118	1501
Sand	1501	1591
Sand & Shale	1591	1711
Sand	1711	1752
Shale	1752	1762
Big Lime	1762	1816
Keener	1816 1816	1846
Big Injun	1846	1885
Shale	1885	1891
Squaw	1891	1952
Sand & Shale	1952	2095
Weir	2095	2184
Sand & Shale	2184	2290
Berea	2290	2321
Sand & Shale	2321	2504
Gordon	2504	2564
Shale	2564	2705
TD	2705	

Gas Checks
1692' -- No Show
2008' – 24/10^{ths} 2" w/ water
2262' - 24/10^{ths} 2" w/ water
2516' - 24/10^{ths} 2" w/ water

1" water @ 250'