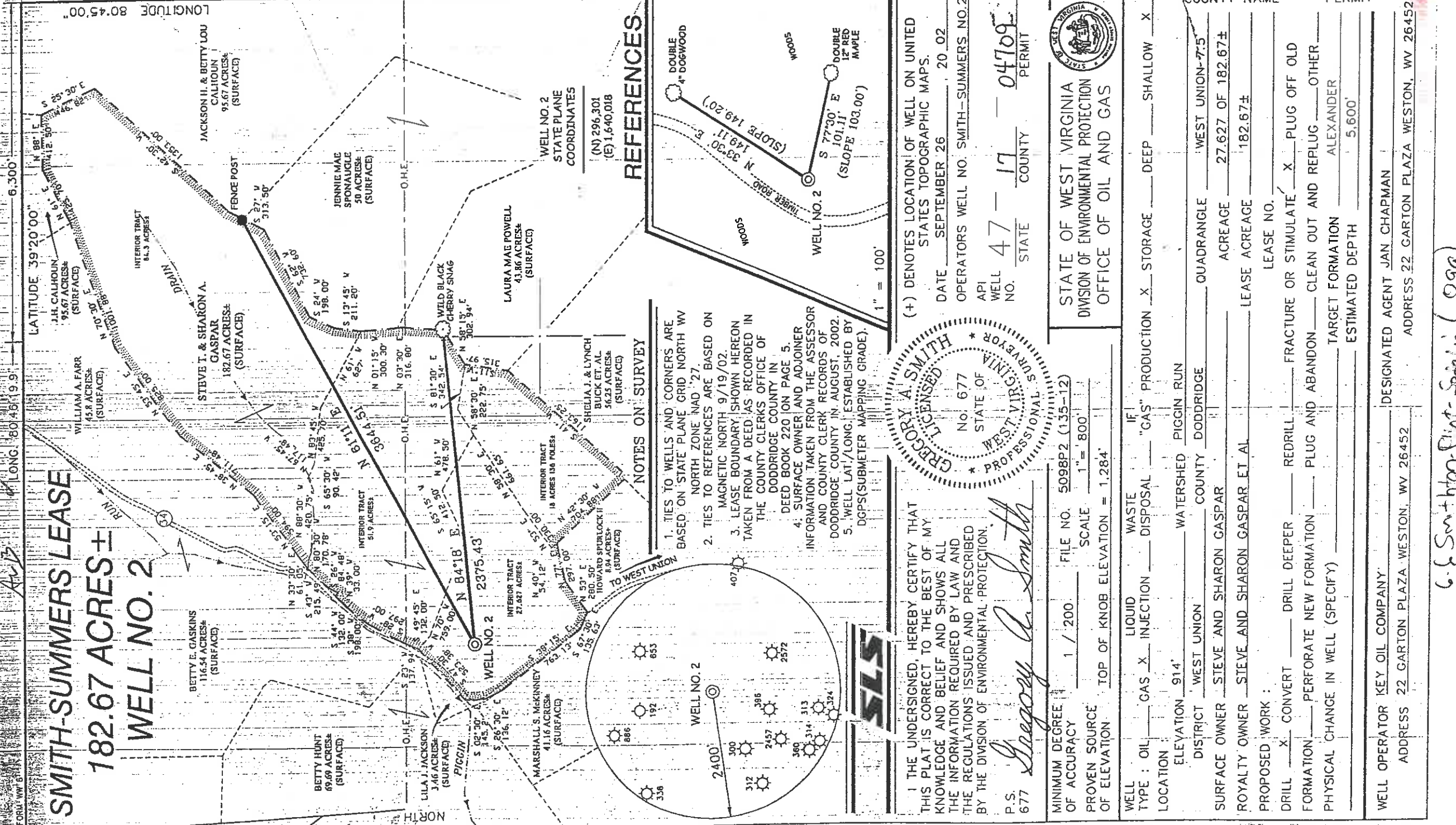


Aug
LONG. 80 45 19.9

SMITH-SUMMERS LEASE 182.67 ACRES ± WELL NO. 2

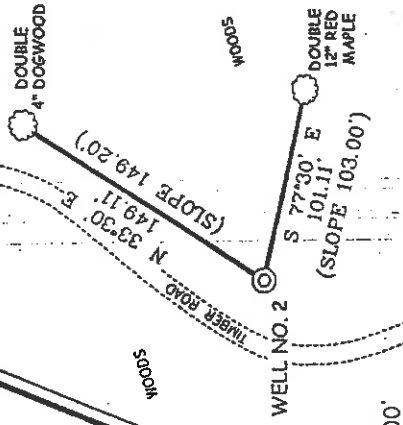


NOTES ON SURVEY

1. TIES TO WELLS AND CORNERS ARE BASED ON STATE PLANE GRID NORTH WV NORTH ZONE NAD '27.
MAGNETIC NORTH 9/19/02.
2. TIES TO REFERENCES ARE BASED ON NORTH ZONE NAD '27.
3. LEASE BOUNDARY (SHOWN HEREON) TAKEN FROM A DEED AS RECORDED IN THE COUNTY CLERKS OFFICE OF DODDRIDGE COUNTY IN DEED BOOK 220 10N PAGE 5.
4. SURFACE OWNER AND ADJOINER INFORMATION TAKEN FROM THE ASSESSOR AND COUNTY CLERK RECORDS OF DODDRIDGE COUNTY IN AUGUST, 2002.
5. WELL LAT./LONG. ESTABLISHED BY DGPS (SUBMETER MAPPING GRADE).

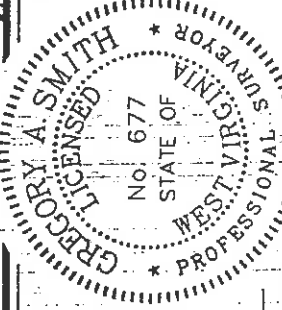
REFERENCES

WELL NO. 2
STATE PLANE
COORDINATES
(N) 296,301
(E) 1,640,018



I THE UNDERSIGNED, HEREBY CERTIFY THAT THIS PLAT IS CORRECT TO THE BEST OF MY KNOWLEDGE AND BELIEF AND SHOWS ALL THE INFORMATION REQUIRED BY LAW AND THE REGULATIONS ISSUED AND PRESCRIBED BY THE DIVISION OF ENVIRONMENTAL PROTECTION.

P.S. *Gregory A. Smith*
677 STATE ST. WEST VIRGINIA



(+) DENOTES LOCATION OF WELL ON UNITED STATES TOPOGRAPHIC MAPS.
DATE SEPTEMBER 26 20 02
OPERATORS WELL NO. SMITH-SUMMERS NO. 2
API WELL NO. 47-17-04709
COUNTY PERMIT

MINIMUM DEGREE OF ACCURACY 1 / 200 FILE NO. 5098P2 (135-12)
PROVEN SOURCE OF ELEVATION TOP OF KNOB ELEVATION = 1,284'
SCALE 1" = 800'

STATE OF WEST VIRGINIA
DIVISION OF ENVIRONMENTAL PROTECTION
OFFICE OF OIL AND GAS



WELL TYPE : OIL GAS INJECTION WASTE LIQUID DISPOSAL "GAS" PRODUCTION STORAGE DEEP SHALLOW

LOCATION ELEVATION 914' DISTRICT WEST UNION COUNTY DODDRIDGE QUADRANGLE WEST UNION-75
SURFACE OWNER STEVE AND SHARON GASPAR ACREAGE 27.627 OF 182.67 ±
ROYALTY OWNER STEVE AND SHARON GASPAR ET AL LEASE ACREAGE 182.67 ±
PROPOSED WORK :
DRILL CONVERT DRILL DEEPER REDRILL FRACTURE OR STIMULATE PLUG OFF OLD
FORMATION PERFORATE NEW FORMATION PLUG AND ABANDON CLEAN OUT AND REPLUG OTHER
PHYSICAL CHANGE IN WELL (SPECIFY) _____ TARGET FORMATION ALEXANDER
ESTIMATED DEPTH 5,600'

WELL OPERATOR KEY OIL COMPANY
DESIGNATED AGENT JAN CHAPMAN
ADDRESS 22 GARTON PLAZA WESTON, WV 26452

G. E. Smith - Plot - Sealed (099)

State of West Virginia
Division of Environmental Protection
Section of Oil and Gas

Av B

Well Operator's Report of Well Work

Farm Name: STEVE & SHARON GASPAR

Operator Well No. : SMITH-SUMMERS #2

LOCATION: Elevation: 914'
District: WEST UNION
Latitude: 9750 Feet South of 39 Deg. 20 Min. 00 Sec.
Longitude: 6300 Feet West of 80 Deg. 45 Min. 00 Sec.

Quadrangle: WEST UNION
County: DODDRIDGE

Company: KEY OIL COMPANY
22 GARTON PLAZA
WESTON, WV 26452-0000

Agent: JAN CHAPMAN

Inspector: MIKE UNDERWOOD
Permit Issued: 10/28/02
Well Work Commenced: 12/07/02
Well Work Completed: 12/18/02

Verbal Plugging
Permission granted on:
Rotary X Cable _____ Rig
Total Depth (feet) _____ 5303'
Fresh water depths (ft) _____ 288'
Salt water depths (ft) _____ NONE

Is coal being mined in area (Y / N) ? N
Coal Depths (ft) : _____ 19' to 21' (3')

OPEN FLOW DATA

Warren
Speechley
Balltown
Rileys
Benson

Producing formation _____ Alexander
Gas: Initial open flow _____ MCF / d Oil: Initial open flow _____ Bbl / d
Final open flow _____ 1,467 MCF / d Oil: Final open flow _____ show Bbl / d
Time of open flow between initial and final tests _____ N/A _____ Hours
Static rock pressure _____ 1760 _____ psig (surface pressure) after _____ 96 _____ Hours

3198' - 3260'
3266' - 3360'
3564' - 4292'
4370' - 4802'
4840' - 4849'
5082' - 5177'

Second producing formation _____
Gas: Initial open flow _____ Commingled MCF / d Oil: Initial open flow _____ Bbl / d
Final open flow _____ Commingled MCF / d Oil: Final open flow _____ Bbl / d
Time of open flow between initial and final tests _____
Static rock pressure _____ psig (surface pressure) after _____ Hours

NOTE: ON BACK OF THIS FORM PUT THE FOLLOWING: 1). DETAILS OF PERFORATED INTERVALS, FRACTURING OR STIMULATING, PHYSICAL CHANGE, ETC. 2). THE WELL LOG WHICH IS A SYSTEMATIC DETAILED GEOLOGICAL RECORD OF ALL FORMATIONS, INCLUDING COAL ENCOUNTERED BY THE WELLBORE.

For: KEY OIL COMPANY

By: *Jan Chapman*

Date: February 6, 2003

PRESIDENT

Printed: 8/2003

0000 4709

Smith-Summers #2 (47-017-4709)
Four Stage Foam Frac – BJ Services

1 st Stage:	Alexander (15 holes) (5108.25' to 5170')	60 Quality Foam Foam, 500 gal. 15% HCL., 60,000# 20/40 sand, 550,000 SCF N2, 814 bbis foam
2 nd Stage:	Benson (3 holes) (4845.75' to 4846.25') Third Riley (4 holes) (4770' to 4770.75') Riley (8 holes) (4394.25' to 4411.75')	60 Quality Foam Foam, 1250 gal 15% HCl 5,000# 80/100 sand, 45,000# 20/40 sand, 540,000 SCF N2, 753 bbis foam
3 rd Stage:	Balltown (4 holes) (3769.50' to 3770.25') Speechley (5 holes) (3247.5' to 3352.50') Warren (6 holes) (3229.75' to 3239')	60 Quality Foam Foam, 1000 gal 15% HCl 5,000# 80/100 sand, 35,000# 20/40 sand, 464,000 SCF N2, 639 bbis foam

KB	0	<u>WELL LOG</u>	
Fill	10	10	
Sand & Shale	14	14	
Coal	19	19	
Sand & Shale	21	21	
Red Rock & Shale	54	54	
Sand & Shale	70	70	
Red Rock	198	198	
Sand & Shale	222	222	
Sand	270	270	
Red Rock & Sand & Shale	318	318	
Sand & Shale	680	680	
Lime	1525	1525	
Sand & Shale	1534	1534	
Little Lime	1724	1724	
Big Lime	1784	1784	
Keener	1868	1868	
Big Injun	1900	1900	
Squaw	1934	1934	
Shale	2000	2000	
Weir	2128	2128	
Shale	2223	2223	
Berea	2223	2336	
Shale	2336	2344	
Gordon	2344	2530	
Shale	2530	2583	
Warren	2583	3198	
Shale	3198	3260	
Speechley	3260	3266	
Shale	3266	3360	
Balltown	3360	3564	
Shale	3564	4292	
Riley	4292	4370	
Third Riley	4370	4434	
Shale	4434	4722	
Benson	4722	4802	
Shale	4802	4840	
Alexander	4840	4849	
Shale	4849	5082	
TD	5082	5177	
	5177	5303	
	5303		

	1 ½" water @ 288'
<u>Gas Checks</u>	
1691' - No show	
1715 - Oil Odor	
2008' - Odor	
2512' - Odor	
2733' - 14/10 ^{ths} -2" w/water	
2920 - 2/10 ^{ths} -2" w/water	
3174' - 2/10 ^{ths} -2" w/water	
3798' - 2/10 ^{ths} -2" w/water	
4363' - 2/10 ^{ths} -2" w/water	
4800' - 2/10 ^{ths} -2" w/water	
5052' - 2/10 ^{ths} -2" w/water	