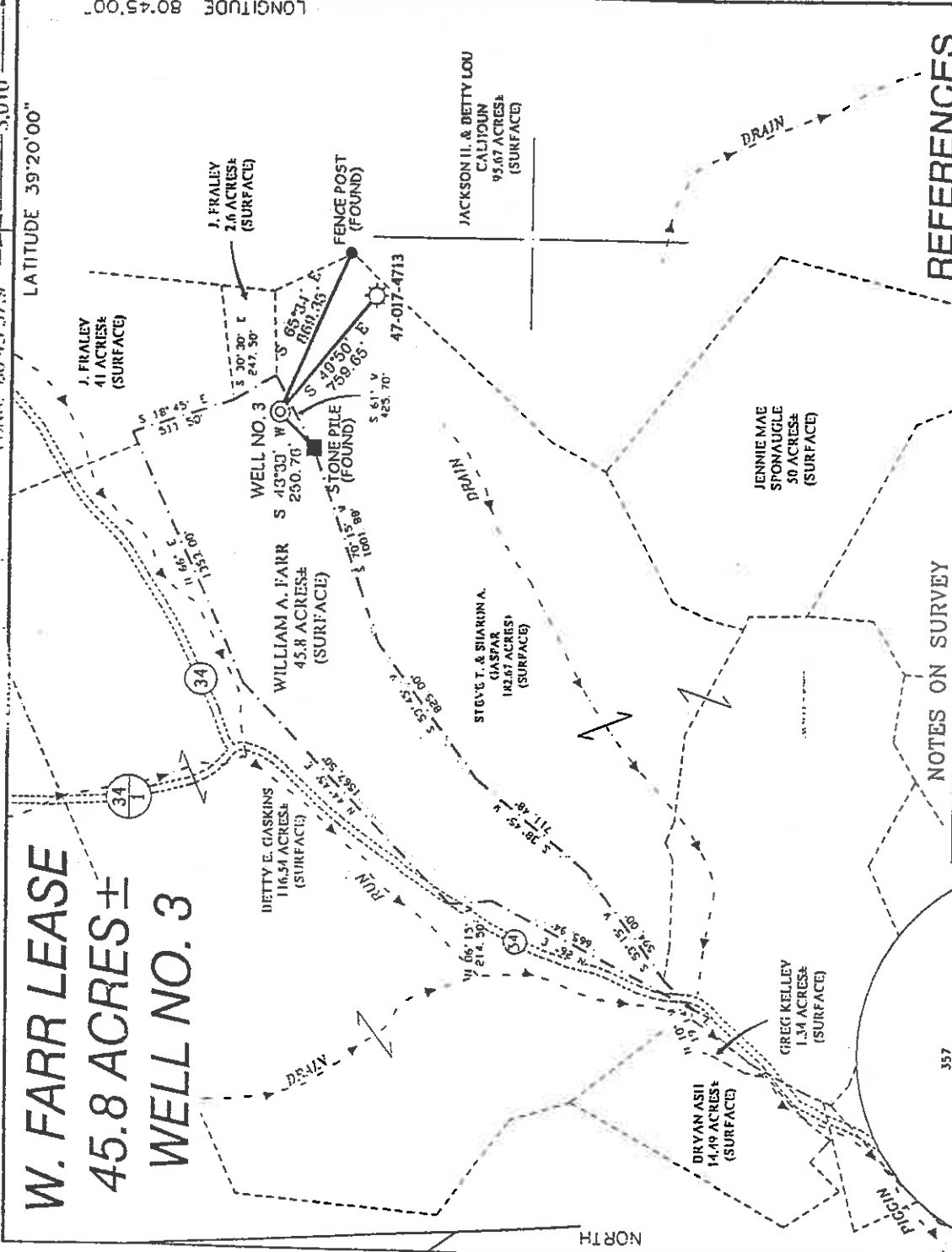


# W. FARR LEASE 45.8 ACRES ± WELL NO. 3

LONG. 80°45'37.9"      LATITUDE 39°20'00"

LONGITUDE 80°45'00"

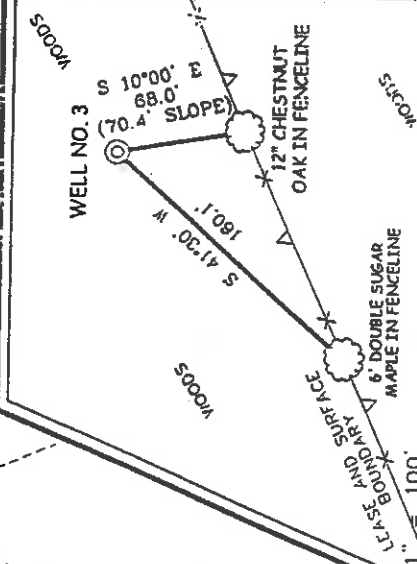
LAT. 39°18'55.9"



### NOTES ON SURVEY

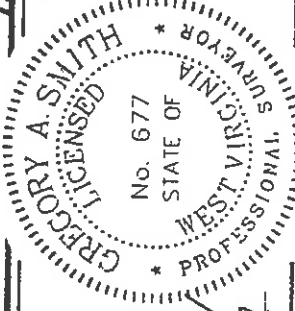
1. TIES TO WELLS AND CORNERS ARE BASED ON STATE PLANE GRID NORTH WW NORTH ZONE NAD '27.
2. TIES TO REFERENCES ARE BASED ON MAGNETIC NORTH 1/23/03.
3. LEASE BOUNDARY SHOWN HEREON TAKEN FROM A DEED AS RECORDED IN THE COUNTY CLERKS OFFICE OF DODDRIDGE COUNTY IN DEED BOOK 220 ON PAGE 5.
4. SURFACE OWNER AND ADJOINER INFORMATION TAKEN FROM THE ASSESSOR AND COUNTY CLERK RECORDS OF DODDRIDGE COUNTY IN AUGUST, 2002.
5. WELL LAT./LONG. ESTABLISHED BY DGPS (SUBMETER MAPPING GRADE).

### REFERENCES



I THE UNDERSIGNED, HEREBY CERTIFY THAT THIS PLAT IS CORRECT TO THE BEST OF MY KNOWLEDGE AND BELIEF AND SHOWS ALL THE INFORMATION REQUIRED BY LAW AND THE REGULATIONS ISSUED AND PRESCRIBED BY THE DIVISION OF ENVIRONMENTAL PROTECTION.

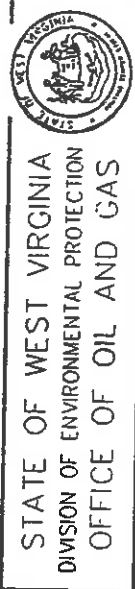
P.S. *Gregory A. Smith*  
677



(+) DENOTES LOCATION OF WELL ON UNITED STATES TOPOGRAPHIC MAPS.

DATE JANUARY 24 . 20 03  
 OPERATORS WELL NO.            FARR NO. 3  
 API WELL NO. 47-17 COUNTY            STATE            PERMIT NO. 04722

MINIMUM DEGREE OF ACCURACY 1 / 200 FILE NO. 5118P3 (123-76)  
 PROVEN SOURCE OF ELEVATION            SCALE 1" = 800'  
           TOP OF KNOB ELEVATION = 1,284'



WELL TYPE : OIL  GAS  INJECTION  WASTE  LIQUID  DISPOSAL  IF "GAS" PRODUCTION  STORAGE  DEEP  SHALLOW   
 LOCATION : ELEVATION 1,185' WATERSHED PIGGIN RUN

DISTRICT WEST UNION COUNTY DODDRIDGE QUADRANGLE WEST UNION 7.5'  
 SURFACE OWNER WILLIAM A. FARR ACREAGE 45.8±  
 ROYALTY OWNER WILLIAM A. FARR ET AL LEASE ACREAGE 45.8±  
 PROPOSED WORK : LEASE NO.             
 DRILL  CONVERT  DRILL DEEPER  REDRILL  FRACTURE OR STIMULATE  PLUG OFF OLD  
 FORMATION  PERFORATE NEW FORMATION  PLUG AND ABANDON  CLEAN OUT AND REPLUG  OTHER   
 PHYSICAL CHANGE IN WELL (SPECIFY)            TARGET FORMATION GORDON  
           ESTIMATED DEPTH 2,900'

WELL OPERATOR KEY OIL COMPANY DESIGNATED AGENT JAN CHAPMAN  
 ADDRESS 22 GARTON PLAZA WESTON, WV 26452

*Smithton - Flint - Seelin*

COUNTY NAME Dodd PERMIT 4722

State of West Virginia  
Division of Environmental Protection  
Section of Oil and Gas

107

Well Operator's Report of Well Work

Farm Name: WILLIAM A. FARR

Operator Well No. : W. FARR #3

LOCATION: Elevation: 1185.00

Quadrangle: WEST UNION

District: WEST UNION

County: DODDRIDGE

Latitude: 6420 Feet South of 39 Deg. 20 Min. 00 Sec.

Longitude: 3010 Feet West of 80 Deg. 45 Min. 00 Sec.

Company: KEY OIL COMPANY  
22 GARTON PLAZA  
WESTON, WV 26452-0000

Agent: JAN E. CHAPMAN

Inspector: MIKE UNDERWOOD  
Permit Issued: 02/19/03  
Well Work Commenced: 08/14/03  
Well Work Completed: 08/18/03

Verbal Plugging  
Permission granted on: \_\_\_\_\_ Rig  
Rotary X Cable \_\_\_\_\_  
Total Depth ( feet ) 3023'  
Fresh water depths ( ft ) 300'  
Salt water depths ( ft ) NONE

Is coal being mined in area ( Y / N )? N  
Coal Depths ( ft ) : NONE

OPEN FLOW DATA

Keener  
Big Injun  
Gordon  
Producing formation \_\_\_\_\_ MCF / d  
Gas: Initial open flow \_\_\_\_\_ MCF / d  
Final open flow 1237 MCF / d  
Time of open flow between initial and final tests N/A  
Static rock pressure 275 psig ( surface pressure ) after 96 Hours

2162' - 2214'  
2223' - 2310'  
2838' - 2892'  
Pay zone depth ( ft )  
Oil: Initial open flow 0 Bbl / d  
Oil: Final open flow show Bbl / d

Second producing formation Commingled  
Gas: Initial open flow \_\_\_\_\_ MCF / d  
Final open flow \_\_\_\_\_ MCF / d  
Time of open flow between initial and final tests \_\_\_\_\_ Hours  
Static rock pressure \_\_\_\_\_ psig ( surface pressure ) after \_\_\_\_\_ Hours

Pay zone depth ( ft )  
Oil: Initial open flow \_\_\_\_\_ Bbl / d  
Oil: Final open flow \_\_\_\_\_ Bbl / d  
Time of open flow between initial and final tests \_\_\_\_\_ Hours  
Static rock pressure \_\_\_\_\_ psig ( surface pressure ) after \_\_\_\_\_ Hours

NOTE: ON BACK OF THIS FORM PUT THE FOLLOWING: 1). DETAILS OF PERFORATED INTERVALS, FRACTURING OR STIMULATING, PHYSICAL CHANGE, ETC. 2). THE WELL LOG WHICH IS A SYSTEMATIC DETAILED GEOLOGICAL RECORD OF ALL FORMATIONS, INCLUDING COAL ENCOUNTERED BY THE WELLBORE.

For: KEY OIL COMPANY

By:   
Date: January 3, 2004

PRESIDENT

DODD 4722

FEB 13 2004

W. Farr #3 (47-017-4722)  
Two Stage Foam Frac – BJ Services

1 <sup>st</sup> Stage:	Gordon ( 12 holes ) ( 2867' to 2890' )	60 Quality Foam. 500 gal. 15% HCL. 35,000# 20/40 sand, 370,000 SCF N2, 425 bbis foam.
2 <sup>nd</sup> Stage:	Big Injun ( 20 holes ) ( 2234' to 2280' ) Keener ( 10 holes ) ( 2200' to 2210' )	60 Quality Foam. 750 gal 15% HCL. 40,000# 20/40 sand, 410,000 SCF N2, 525 bbis foam.

WELL LOG

KB-Gl	0	10	
Clay	10	15	
Red Rock & Sand & Shale	15	99	
Sand & Shale	99	160	
Sand	160	170	
Red Rock	170	185	
Sand	185	195	
Red Rock	195	203	
Sand & Shale	203	300	½" to 1" water @ 300'
Red Rock	300	330	
Sand & Shale	300	330	
Red Rock	330	419	
Sand & Shale	419	427	
Sand	427	798	
Sand	798	847	
Sand & Shale	847	1085	
Sand	1085	1093	
Shale & Red Rock	1093	1184	
Sand & Shale	1184	2049	
Sand	2049	2073	
Little Lime	2073	2094	
Sand & Shale	2094	2107	
Big Lime	2107	2162	
Keener	2162	2214	
Shale	2214	2223	
Big Injun	2214	2310	
Shale	2223	2428	
Weir	2310	2428	
Shale	2428	2522	
Berea	2522	2629	
Sand & Shale	2629	2652	
Gordon	2652	2838	
Shale	2838	2892	
TD	2892	3023	
	3023		

Gas Checks  
2079' – No Show  
2329' – No Show  
2771' – No Show