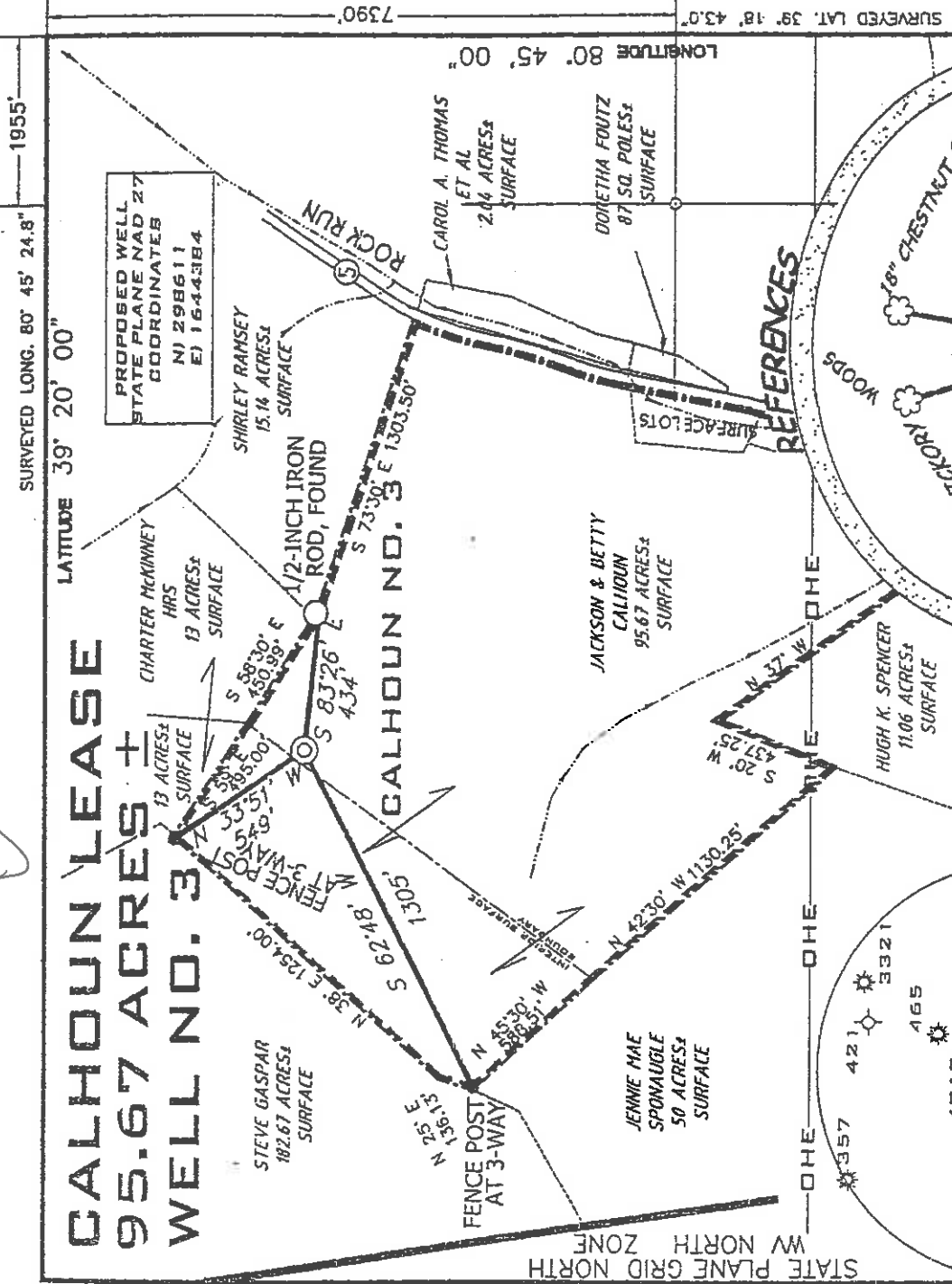


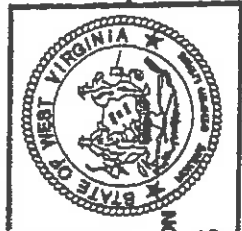
CALHOUN LEASE 95.67 ACRES ± WELL NO. 3



I, THE UNDERSIGNED HEREBY CERTIFY THAT THIS PLAN IS CORRECT TO THE BEST OF MY KNOWLEDGE AND BELIEF AND SHOWS ALL THE INFORMATION REQUIRED BY LAW AND THE REGULATIONS ISSUED AND PRESCRIBED BY THE DEPARTMENT OF ENVIRONMENTAL PROTECTION

TERRY A. SHREVE
No. 1008
STATE OF WEST VIRGINIA
PROFESSIONAL ENGINEER

DATE: JUNE 11, 2003
OPERATORS WELL NO. JACK CALHOUN NO. 3
API WELL NO. 47-017-04754 PERMIT



STATE OF WEST VIRGINIA
DIVISION OF ENVIRONMENTAL PROTECTION
OFFICE OF OIL AND GAS

FILE NUMBER 0300015
DRAWING NUMBER WP3(W1-12)
SCALE 1" = 600'
MINIMUM DEGREE OF ACCURACY 1/200
PROVEN SOURCE OF ELEVATION BENCH MARK
ELEVATION 833'

WELL TYPE OIL GAS LIQUID INJECTION WASTE DISPOSAL
IF 'GAS' PRODUCTION STORAGE DEEP SHALLOW

LOCATION ELEVATION 1119' WATERBED WEST UNION ROCK RUN
DISTRICT WEST UNION COUNTY DODDRIDGE
QUADRANGLE WEST UNION 7.5' LEASE NUMBER

SURFACE OWNER JACKSON H. AND BETTY LOU CALHOUN ACREAGE 95.67 ±
OIL & GAS ROYALTY OWNER JACKSON H. AND BETTY LOU CALHOUN LEASE ACREAGE 95.67 ±

PROPOSED WORK: DRILL CONVERT DRILL DEEPER REDRILL FRACTURE OR STIMULATE FLUG OFF OLD FORMATION
PERFORATE NEW FORMATION OTHER PHYSICAL CHANGE (SPECIFY)

TARGET FORMATION GORDON FLUG & ABANDON CLEAN OUT & REFLUG ESTIMATED DEPTH 3000'
WELL OPERATOR KEY OIL COMPANY DESIGNATED AGENT JAN CHAPMAN
ADDRESS 22 GARTON PLAZA WESTON, WV 26452 ADDRESS 22 GARTON PLAZA WESTON, WV 26452

COUNTY NAME PERMIT

Smithton Field - Gasoline 99
(6-6)

JLD

State of West Virginia
Division of Environmental Protection
Section of Oil and Gas

Well Operator's Report of Well Work

Farm Name: JACKSON H. & BETTY LOU CALHOUN

Operator Well No.: JACK CALHOUN #3

Quadrangle: WEST UNION

LOCATION: Elevation: 1119.00

County: DODDRIDGE

District: WEST UNION

Latitude: 7390 Feet South of 39 Deg. 20 Min. 00 Sec.

Longitude: 1955 Feet West of 80. Deg. 45 Min. 00 Sec.

Company: KEY OIL COMPANY
22 GARTON PLAZA
WESTON, WV 26452-0000

Agent: JAN E. CHAPMAN

Inspector: MIKE UNDERWOOD
Permit Issued: 07/15/03
Well Work Commenced: 03/15/04
Well Work Completed: 03/18/04

Verbal Plugging
Permission granted on: _____ Rig
Rotary X Cable _____
Total Depth (feet) 2870'
Fresh water depths (ft) NONE
Salt water depths (ft) NONE

Is coal being mined in area (Y/N)? N
Coal Depths (ft): NONE

Casing & Tubing Size	Used in Drilling	Left in Well	Cement Fill Up Cu. Ft.
8 5/8"	917'	917'	210 sks To Surface
4 1/2"	2835'	2835'	240 sks

OPEN FLOW DATA

Keener
Big Injun
Gordon

Producing formation _____ MCF / d
Gas: Initial open flow _____ MCF / d
Final open flow 993 MCF / d
Time of open flow between initial and final tests N/A
Static rock pressure 490 psig (surface pressure) after 96 Hours

Pay zone depth (ft)
Oil: Initial open flow _____ Bbl / d
Oil: Final open flow _____ show Bbl / d
Hours _____
Hours _____

2086' - 2120'
2128' - 2190'
2743' - 2794'

Second producing formation Commingle
Gas: Initial open flow _____ MCF / d
Final open flow _____ MCF / d
Time of open flow between initial and final tests _____
Static rock pressure _____ psig (surface pressure) after _____ Hours

Pay zone depth (ft)
Oil: Initial open flow _____ Bbl / d
Oil: Final open flow _____ Bbl / d
Hours _____
Hours _____

RECEIVED
Office of Oil and Gas
Office of Chief
MAY 07 2004
WV Department of
Environmental Protection

NOTE: ON BACK OF THIS FORM PUT THE FOLLOWING: 1). DETAILS OF PERFORATED INTERVALS, FRACTURING OR STIMULATING, PHYSICAL CHANGE, ETC. 2). THE WELL LOG WHICH IS A SYSTEMATIC DETAILED GEOLOGICAL RECORD OF ALL FORMATIONS, INCLUDING COAL ENCOUNTERED BY THE WELLBORE.

For: KEY OIL COMPANY

By: *Jan Chapman*
Date: May 4, 2004

PRESIDENT

0000 4754

15 JUL 06 2004

Calthoun #3 (47-017-4754)
Three Stage Foam Frac - BJ Services

1 st Stage:	Gordon (15 holes) (2761' to 2791')	60 Quality Foam. 500 gal. 15% HCL. 35,000# 20/40 sand, 370,000 SCF N2, 425 bbis foam.
2 nd Stage:	Big Injun (20 holes) (2140' to 2160')	60 Quality Foam. 750 gal 15% HCL. 30,000# 20/40 sand, 320,000 SCF N2, 325 bbis foam.
3 rd Stage	Keener (15 holes) (2104' to 2112')	60 Quality Foam. 750 gal 15% HCL. 25,000# 20/40 sand, 270,000 SCF N2, 300 bbis foam.

WELL LOG

KB-GL	0	10
Fill	10	15
Red Rock & Shale	15	30
Sand & Shale	30	78
Red Rock	78	120
Sand & Shale	120	130
Red Rock	130	142
Sand & Shale	142	170
Red Rock	170	200
Sand & Shale	200	331
Red Rock	331	353
Sand	353	371
Sand & Shale & Red Rock	371	575
Sand & Shale	575	720
Sand	720	732
Sand & Shale	732	1974
Little Lime	1974	2016
Big Lime	2016	2086
Keener	2086	2120
Shale	2120	2128
Big Injun	2128	2190
Shale	2190	2336
Weir	2336	2431
Shale	2431	2538
Berea	2538	2557
Sand & Shale	2557	2743
Gordon	2743	2794
Shale	2794	2870
TD	2870	

Gas Checks
1950' - No Show
2202' - Odor
2676' - Odor
TD - Odor