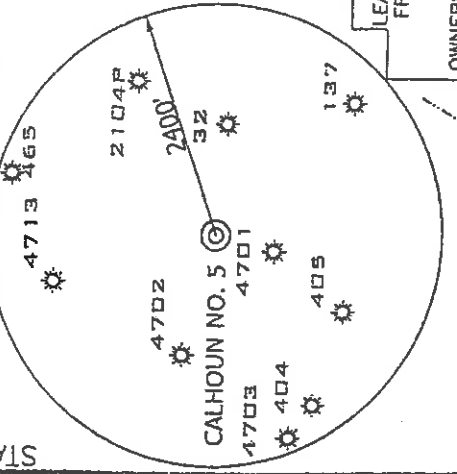
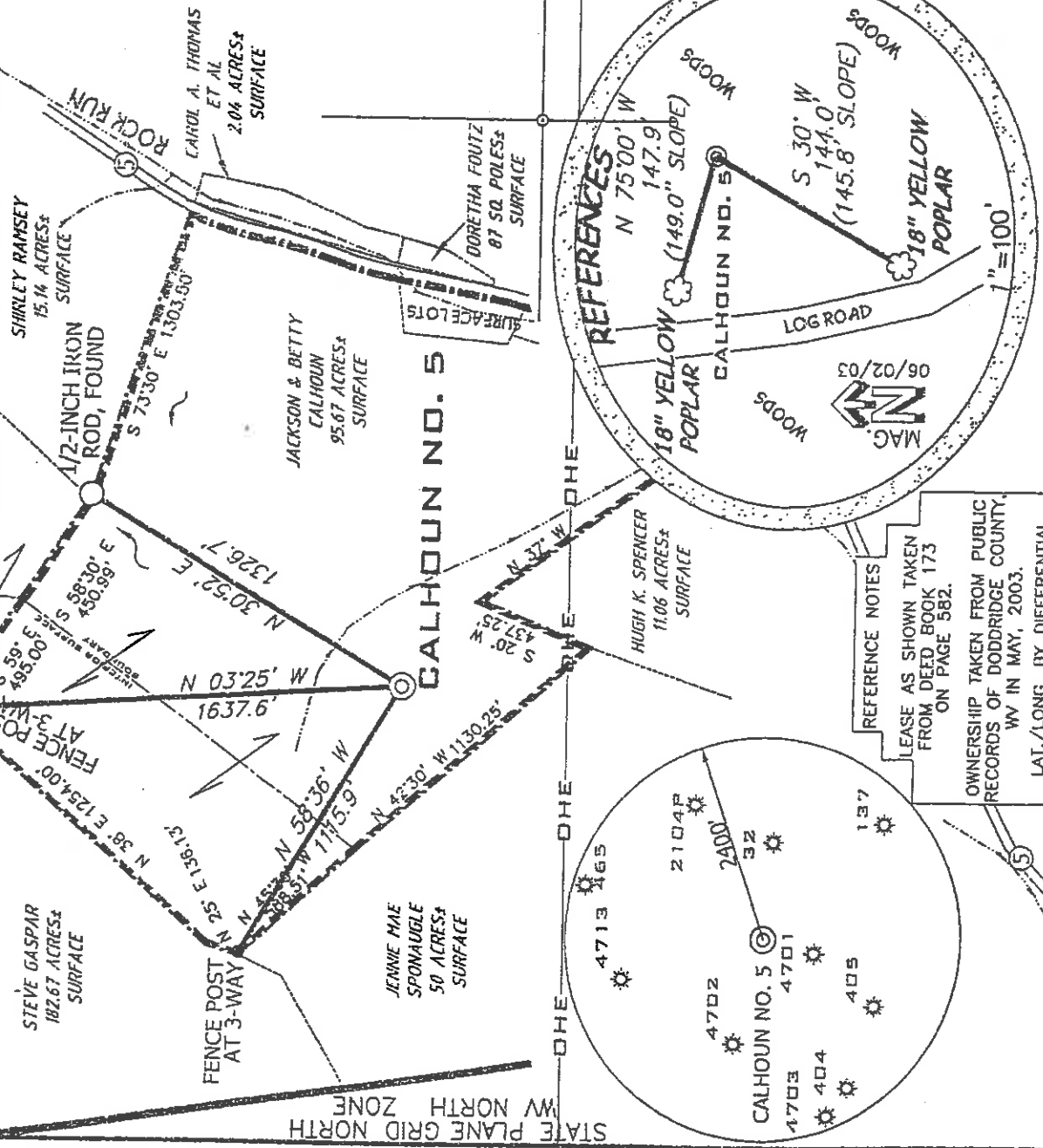


SURVEYED LONG. 80° 45' 27.2" LATITUDE 39° 20' 00" SURVEYED LAT. 39° 18' 35.2" LONGITUDE 80° 45' 00"

CALHOUN LEASE 95.67 ACRES ± WELL NO. 5



REFERENCE NOTES
LEASE AS SHOWN TAKEN FROM DEED BOOK 173 ON PAGE 582.
OWNERSHIP TAKEN FROM PUBLIC RECORDS OF DODDRIDGE COUNTY, WV IN MAY, 2003.
LAT./LONG. BY DIFFERENTIAL SUBMETER MAPPING GRADE GPS

(+) DENOTES LOCATION ON UNITED STATES TOPOGRAPHIC MAPS

FILE NUMBER 0300015
DRAWING NUMBER WP4(W1-13)
SCALE 1"=600'
MINIMUM DEGREE OF ACCURACY 1/200
PROVEN SOURCE OF ELEVATION BENCH MARK
ELEVATION 833'

I, THE UNDERSIGNED HEREBY CERTIFY THAT THIS PLAN IS CORRECT TO THE BEST OF MY KNOWLEDGE AND BELIEF AND SHOWS ALL THE INFORMATION REQUIRED BY LAW AND THE REGULATIONS ISSUED AND PRESCRIBED BY THE DEPARTMENT OF ENVIRONMENTAL PROTECTION

P.S. 1008 *Terry A. Shreve*



STATE OF WEST VIRGINIA
DIVISION OF ENVIRONMENTAL PROTECTION
OFFICE OF OIL AND GAS

WELL TYPE: OIL GAS LIQUID INJECTION WASTE DISPOSAL
OF "GAS" PRODUCTION STORAGE DEEP SHALLOW
LOCATION: ELEVATION 1026' WATERSHED ROCK RUN
DISTRICT WEST UNION

QUADRANGLE WEST UNION 7.5' COUNTY DODDRIDGE
SURFACE OWNER JACKSON H. AND BETTY LOU CALHOUN LEASE NUMBER
OIL & GAS ROYALTY OWNER JACKSON H. AND BETTY LOU CALHOUN ACREAGE 95.67±
LEASE ACREAGE 95.67±

PROPOSED WORK: DRILL CONVERT DRILL DEEPER REDRILL FRACTURE OR STIMULATE PLUG OFF OLD FORMATION
PERFORATE NEW FORMATION OTHER PHYSICAL CHANGE (SPECIFY)

TARGET FORMATION GORDON PLUG & ABANDON CLEAN OUT & REFLUG
WELL OPERATOR KEY OIL COMPANY ESTIMATED DEPTH 3000'
DESIGNATED AGENT JAN CHAPMAN

ADDRESS 22 GARTON PLAZA WESTON, WV 26452 ADDRESS 22 GARTON PLAZA WESTON, WV 26452



DATE: JUNE 11, 2003
OPERATORS WELL NO. JACK CALHOUN NO. 5
API WELL NO.

47-017-04755 PERMIT

0000 4755

666 Smithtown Flat-Sodalia 99

JUN 13 2003

State of West Virginia
Division of Environmental Protection
Section of Oil and Gas

APL

Well Operator's Report of Well Work

Farm Name: JACKSON H. & BETTY LOU CALHOUN

Operator Well No. : CALHOUN NO. 5

LOCATION: Elevation: 1026'

Quadrangle: WEST UNION

District: WEST UNION

County: DODDRIDGE

Latitude: 7890 Feet South of 39 Deg. 20 Min. 00 Sec.

Longitude: 2140 Feet West of 80 Deg. 45 Min. 00 Sec.

Company: KEY OIL COMPANY
22 GARTON PLAZA
WESTON, WV 26452-0000

Agent: JAN CHAPMAN

Inspector: MIKE UNDERWOOD
Permit Issued: 07/15/03
Well Work Commenced: 05/05/04
Well Work Completed: 05/07/04

Verbal Plugging
Permission granted on: _____ Rig
Rotary X Cable _____ 2836'
Total Depth (feet) _____
Fresh water depths (ft) _____ 107'
Salt water depths (ft) _____ NONE

Is coal being mined in area (Y / N) ? N
Coal Depths (ft) : _____ NONE

OPEN FLOW DATA

Producing formation Big Injun
Gas: Initial open flow _____ Gordon
Final open flow 2,054 MCF / d Odor _____ MCF / d
Time of open flow between initial and final tests _____ N/A
Static rock pressure 300 psig (surface pressure) after 96 Hours

Pay zone depth (ft) 1992' - 2086'
Initial open flow 0 Bbl / d
Final open flow show Bbl / d
Time of open flow between initial and final tests _____ Hours
Static rock pressure after 96 Hours

Second producing formation _____
Gas: Initial open flow _____ Commingled MCF / d Oil: Initial open flow _____ Bbl / d
Final open flow _____ Commingled MCF / d Oil: Final open flow _____ Bbl / d
Time of open flow between initial and final tests _____ Hours
Static rock pressure _____ psig (surface pressure) after _____ Hours

Pay zone depth (ft) _____
Oil: Initial open flow _____ Bbl / d
Oil: Final open flow _____ Bbl / d
Time of open flow between initial and final tests _____ Hours
Static rock pressure after _____ Hours

NOTE: ON BACK OF THIS FORM PUT THE FOLLOWING: 1). DETAILS OF PERFORATED INTERVALS, FRACTURING OR STIMULATING, PHYSICAL CHANGE, ETC. 2). THE WELL LOG WHICH IS A SYSTEMATIC DETAILED GEOLOGICAL RECORD OF ALL FORMATIONS, INCLUDING COAL ENCOUNTERED BY THE WELLBORE.

For: KEY OIL COMPANY

By: *[Signature]*
Date: November 23, 2004

RECEIVED
Office of Oil & Gas
Office of Chief
DEC 02 2004
WV Department of
Environmental Protection
D000 4755

DEC 23 2004

Calthoun #5 (47-017-4755)
Two Stage Foam Frac – BJ Services

1 st Stage:	Gordon(15 holes) (2682' to 2688')	60 Quality Foam, 500 gal. 15% HCL., 40,000# 20/40 sand, 325,000 SCF N2, 410 bbis foam
2 nd Stage:	Big Injun (15 holes) (2008' to 2072')	60 Quality Foam, 750 gal 15% HCl, 45,000# 20/40 sand, 435,000 SCF N2, 520 bbis foam

	<u>WELL LOG</u>	
KB	0	
Fill	10	
Sand	14	
Red Rock	29	
Sand & Shale	34	
Shale & Red Rock	34	
Sand	41	
Sand & Shale	140	
Red Rock	170	
Sand & Shale	203	
Red Rock	233	
Sand & Shale	233	
Sand	360	
Sand & Shale	399	
Sand	704	
Sand & Shale	704	
Sand	726	
Sand	1804	
Little Lime	1874	
Big Lime	1903	
Big Injun/Squaw	1992	
Shale	2086	
Weir	2220	
Shale	2311	
Berea	2422	
Shale	2442	
Gordon	2628	
Shale	2678	
TD	2836	

1" water @ 107'

Gas Checks
1824' – No Show
2012' - Odor
2109' - Odor
2614' - Odor

DEC 23 2004