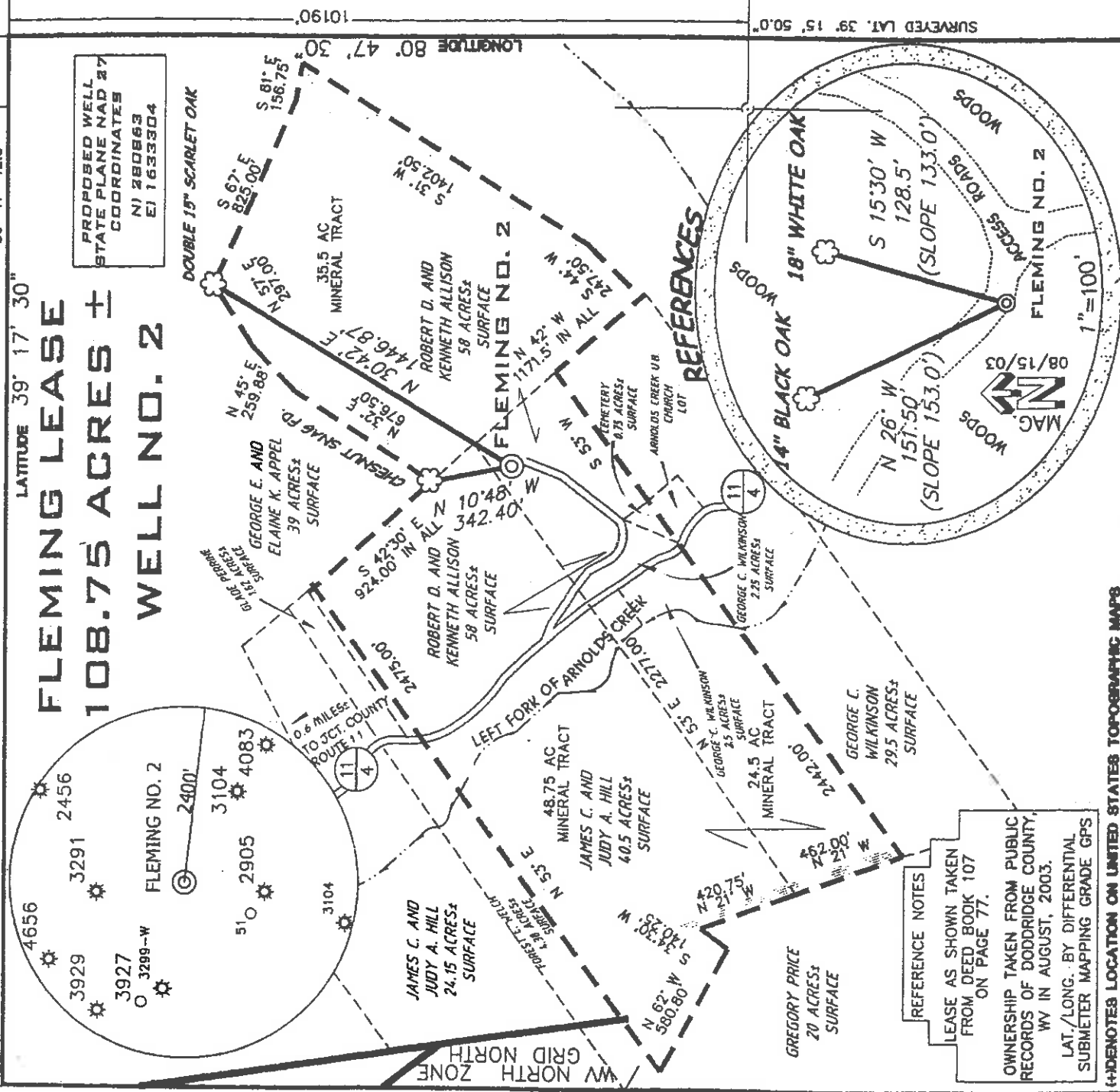


# FLEMING LEASE ± 108.75 ACRES ± WELL NO. 2



SURVEYED LAT. 39° 15' 50.0"

LONGITUDE 80° 47' 30"

### REFERENCES

THE UNDERSIGNED HEREBY CERTIFY THAT THIS PLAN IS CORRECT TO THE BEST OF MY KNOWLEDGE AND BELIEF AND SHOWS ALL THE INFORMATION REQUIRED BY LAW AND THE REGULATIONS ISSUED AND PRESCRIBED BY THE DEPARTMENT OF ENVIRONMENTAL PROTECTION

P.S. Terry A. Shreve  
10000 Large Right  
Land Surveying LLC  
Charlottesville, WV 26147  
(200) 594-0265



FILE NUMBER 030022  
DRAWING NUMBER WF2(W1-19)  
SCALE 1"=600'  
MINIMUM DEGREE OF ACCURACY 1/200  
PROVEN SOURCE OF ELEVATION JUNCTION OF ROADS  
ELEVATION 816'

STATE OF WEST VIRGINIA  
DIVISION OF ENVIRONMENTAL PROTECTION  
OFFICE OF OIL AND GAS

WELL TYPE: OIL  GAS  LIQUID INJECTION  WASTE DISPOSAL   
 (IF 'GAS') PRODUCTION  STORAGE  DEEP  SHALLOW   
 LOCATION ELEVATION 1063' WATERSHED LEFT FORK OF ARNOLDS CREEK  
 DISTRICT WEST UNION COUNTY DODDRIDGE  
 QUADRANGLE WEST UNION 7.5'  
 SURFACE OWNER ROBERT D. AND KENNETH ALLISON ACREAGE 58 AC±  
 OIL & GAS ROYALTY OWNER THOMAS J. FLEMING HEIRS LEASE ACREAGE 108.75 AC±  
 PROPOSED WORK: DRILL  CONVERT  DRILL DEEPER  REDELL  FRACTURE OR STIMULATE  PLUG OFF OLD FORMATION   
 PERFORATE NEW FORMATION  OTHER PHYSICAL CHANGE (SPECIFY) \_\_\_\_\_  
 TARGET FORMATION ALEXANDER PLUG & ABANDON CLEAN OUT & REFLUG ESTIMATED DEPTH 5600'  
 WELL OPERATOR KEY OIL COMPANY DESIGNATED AGENT JAN CHAPMAN  
 ADDRESS 22 GARTON PLAZA WESTON, WV 26452 ADDRESS 22 GARTON PLAZA WESTON, WV 26452

D000 4762

(Simplified Form - Electronic Creation 133)  
6-6

OCT 10 2003

State of West Virginia  
Division of Environmental Protection  
Section of Oil and Gas

*fu 13*

Well Operator's Report of Well Work

Farm Name: ROBERT D. AND KENNETH ALLISON

Operator Well No. : FLEMING #2

LOCATION: Elevation: 1063.00

Quadrangle: WEST UNION

District: WEST UNION  
Latitude: 10190 Feet South of 39 Deg. 17 Min. 30 Sec.  
Longitude: 970 Feet West of 80 Deg. 47 Min. 30 Sec.

County: DODDRIDGE

Company: KEY OIL COMPANY  
22 GARTON PLAZA  
WESTON, WV 26452-0000

Agent: JAN E. CHAPMAN

Inspector: MIKE UNDERWOOD  
Permit Issued: 10/09/03  
Well Work Commenced: 01/26/04  
Well Work Completed: 01/30/04

Verbal Plugging  
Permission granted on: \_\_\_\_\_ Rig  
Rotary X Cable \_\_\_\_\_  
Total Depth (feet) 5314'  
Fresh water depths (ft) 380'  
Salt water depths (ft) NONE

Is coal being mined in area (Y/N)? N  
Coal Depths (ft): NONE

OPEN FLOW DATA

Warren  
Speechley  
Balltown  
Rileys  
Benson

Producing formation Alexander  
Gas: Initial open flow 133 MCF / d  
Final open flow 1958 MCF / d  
Time of open flow between initial and final tests N/A  
Static rock pressure 1850 psig ( surface pressure ) after 96 Hours

Second producing formation Commingled  
Gas: Initial open flow \_\_\_\_\_ MCF / d  
Final open flow \_\_\_\_\_ MCF / d  
Time of open flow between initial and final tests \_\_\_\_\_  
Static rock pressure \_\_\_\_\_ psig ( surface pressure ) after \_\_\_\_\_  
Pay zone depth ( ft ) \_\_\_\_\_  
Oil: Initial open flow \_\_\_\_\_ Bbl / d  
Oil: Final open flow \_\_\_\_\_ Bbl / d  
Hours \_\_\_\_\_

3190' - 3254'  
3267' - 3367'  
3566' - 4328'  
4370' - 4784'  
4834' - 4846'  
5098' - 5182'

RECEIVED  
Office of Oil & Gas  
Office of Chief  
APR 26 2004  
WV Department of  
Environmental Protection

NOTE: ON BACK OF THIS FORM PUT THE FOLLOWING: 1). DETAILS OF PERFORATED INTERVALS, FRACTURING OR STIMULATING, PHYSICAL CHANGE, ETC. 2). THE WELL LOG WHICH IS A SYSTEMATIC DETAILED GEOLOGICAL RECORD OF ALL FORMATIONS, INCLUDING COAL ENCOUNTERED BY THE WELLBORE.

For: KEY OIL COMPANY  
By: *Sam Chapman*  
Date: April 26, 2004

PRESIDENT

0000 4762

JUL 0 4 2004

Fleming #2 (47-017-4762)  
 Four Stage Foam Frac - Universal Well Services

1<sup>st</sup> Stage: Alexander ( 13 holes ) ( 5114' to 5179.25' )      60 Quality Foam. 500 gal. 15% HCL.  
 60,000# 20/40 sand, 565,000 SCF N2,  
 814 bbis foam.

2<sup>nd</sup> Stage: Benson ( 9 holes ) ( 4840' to 4842' )      60 Quality Foam. 750 gal 15% HCL.  
 Third Riley ( 4 holes ) ( 4755.75' to 4756.50' )      30,000# 20/40 sand, 359,000 SCF N2,  
 525 bbis foam.

3<sup>rd</sup> Stage: Riley ( 10 holes ) ( 4411' to 4428.50' )      60 Quality Foam 750 gal 15% HCL.  
 Balltown ( 3 holes ) ( 3996.50' to 4002' )      5,000# 80/100 sand, 35,000# 20/40 sand,  
 448,000 SCF N2, 618 bbis foam.

4<sup>th</sup> Stage: Balltown (6 holes ) ( 3760.75' to 3824' )      60 Quality Foam. 750 gal 15% HCL.  
 Speechley ( 5 holes ) ( 3268.50' to 3356' )      5,000# 80/100 sand, 45,000# 20/40 sand,  
 Warren ( 4 holes ) ( 3203.50' to 3246' )      517,000 SCF N2, 728 bbis foam.

WELL LOG

KB-GL	0	10	
Clay	10	15	
Sand	15	69	
Red Rock	69	94	
Sand & Red Rock & Shale	94	265	1" water @ 380'
Sand & Shale	265	452	
Sand	452	850	
Shale	850	1039	Oil @ 970'
Sand	1039	1170	
Sand & Shale	1170	1800	
Little Lime	1800	1843	
Big Lime	1843	1896	
Big Injun	1896	1981	
Shale	1981	2130	
Weir	2130	2240	
Shale	2240	2526	
Gordon	2526	2578	
Shale	2578	3190	
Warren	3190	3254	
Shale	3254	3267	
Speechley	3267	3367	
Shale	3367	3566	
Balltown	3566	4328	
Shale	4328	4370	
Riley	4370	4443	
Shale	4443	4745	
Third Riley	4745	4784	
Shale	4784	4834	
Benson	4834	4846	
Shale	4846	5098	
Alexander	5098	5182	
Shale	5182	5314	
TD	5314		

Gas Checks

1823' - Oil Odor  
 2265' - No Show  
 2580' - Odor  
 2611' - 12/10<sup>ths</sup> water/w 2"  
 3250' - 12/10<sup>ths</sup> water/w 2"  
 3777' - 10/10<sup>ths</sup> water/w 2"  
 4466' - 10/10<sup>ths</sup> water/w 2"  
 4873' - Odor  
 5126' - Odor