

39 25

en 08

Latitude

Longitude

+

Topo Plat

Topo Location

7.5' Loc. _____ 15' Loc. _____
(calc.)

Company Fluharty Snt.
Farm RK Carvell
15' Quad _____
(sec.)
7.5' Quad Centarpoint
District McClelland

WELL LOCATION PLAT

County 17 Permit 4768N

(Smulston-Flint-Snyder 94)

R.B.

State of West Virginia
Department of Environmental Protection
Office of Oil and Gas

RECEIVED
Office of Oil & Gas
Permitting
DEC 19 2003
WV Department of
Environmental Protection

Well Operator's Report of Well Work

Farm Name: REED, ROBERTA L. Operator Well No.: R. K. CARROLL #1
 LOCATION: Elevation: 840 Quadrangle: CENTERPOINT 7.5
 District: MCCLELLAN County: DODDRIDGE
 Latitude: 12,775 Feet South of 39 Deg. 25 Min. 00 Sec.
 Longitude: 10,700 Feet West of 80 Deg. 40 Min. 00 Sec.

Company: FLUHARTY ENTERPRISES, INC

Address: P O BOX 226 SALEM, WV 26426

Agent: THOMAS J. FLUHARTY

Inspector: MIKE UNDERWOOD

Date Permit Issued: 11/6/2003

Date Well Work Commenced: N/A

Date Well Work Completed: N/A

Verbal Plugging:

Date Permission granted on:

Rotary Cable Rig

Total Depth (feet): N/A

Fresh Water Depth (ft.): N/A

Salt Water Depth (ft.):

Is coal being mined in area (N/Y)? N/A

Coal Depths (ft.): N/A

Casing & Tubing	Used in drilling	Left in well	Cement fill up Cu. Ft.
N/A	N/A	N/A	N/A

THERE IS NO KNOWN INFORMATION AVAILABLE ON THIS WELL, REGARDING DRILLING, FRACTURING, AMOUNT OF PIPE IN HOLE OR ANY PRODUCING FORMATION DATA.

OPEN FLOW DATA

Producing formation GORDON STRAY ? Pay zone depth (ft) N/A
 Gas: Initial open flow N/A MCF/d Oil: Initial open flow N/A Bbl/d
 Final open flow N/A MCF/d Final open flow N/A Bbl/d
 Time of open flow between initial and final tests _____ Hours
 Static rock Pressure N/A psig (surface pressure) after _____ Hours
 Second producing formation _____ Pay zone depth (ft) _____
 Gas: Initial open flow _____ MCF/d Oil: Initial open flow _____ Bbl/d
 Final open flow _____ MCF/d Final open flow _____ Bbl/d
 Time of open flow between initial and final tests _____ Hours
 Static rock Pressure _____ psig (surface pressure) after _____ Hours

NOTE: ON BACK OF THIS FORM PUT THE FOLLOWING: 1). DETAILS OF PERFORATED INTERVALS, FRACTURING OR STIMULATING, PHYSICAL CHANGE, ETC. 2) THE WELL LOG WHICH IS A SYSTEMATIC DETAILED GEOLOGICAL RECORD OF ALL FORMATIONS, INCLUDING COAL ENCOUNTERED BY THE WELLBORE:

Signed: FLUHARTY ENTERPRISES, INC
 By: Joseph R. Underwood
 Date: 12/17/2003

0000 4768N

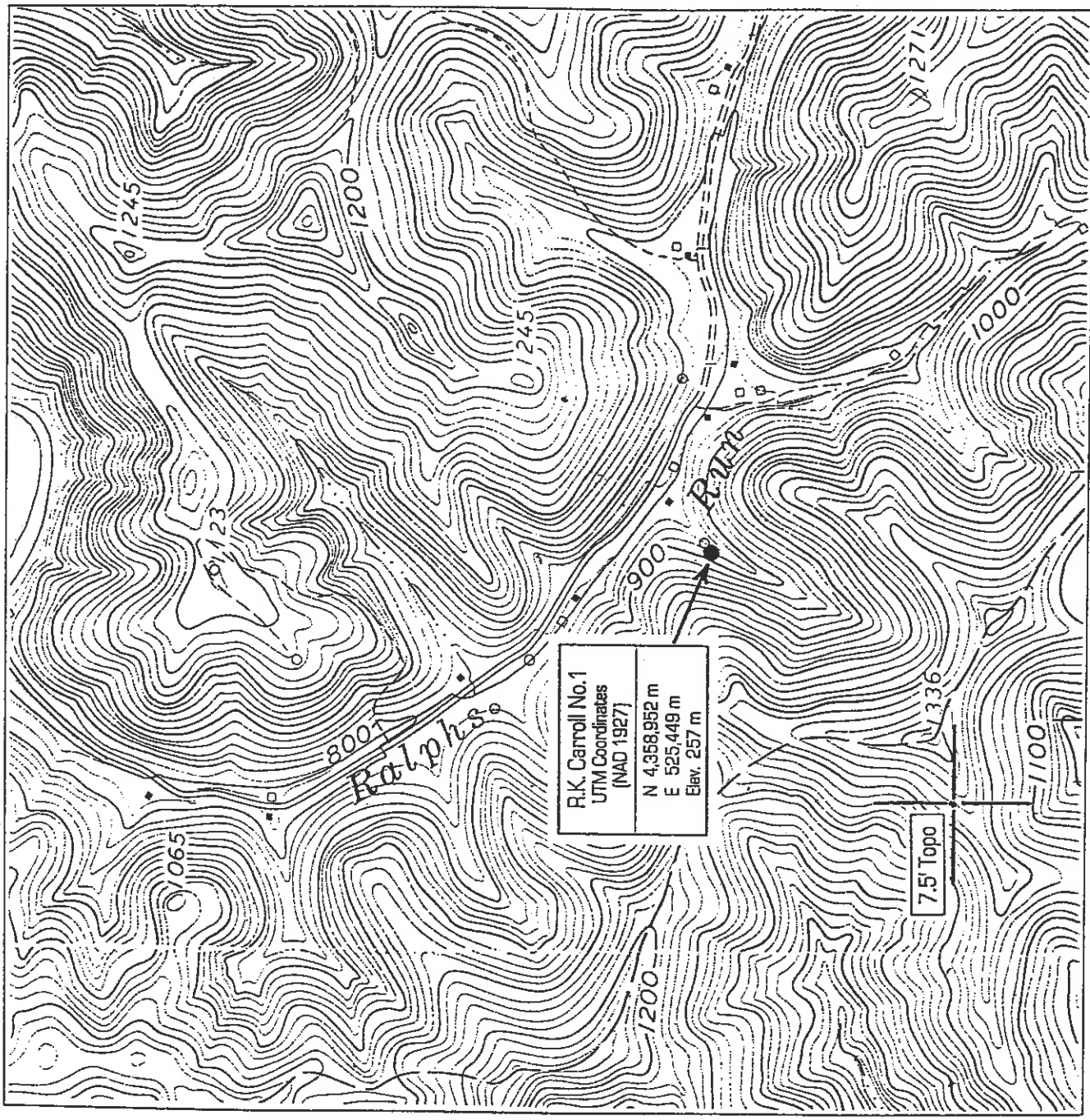
FEB 17 2004

Longitude - 80° 42' 16.3"

10,700"

LATITUDE 39° 25' 00"

LONGITUDE 80° 40' 00"



R.K. Carroll No. 1	
UTM Coordinates (NAD 1927)	
N	4,958,952 m
E	525,449 m
Elev. 257 m	

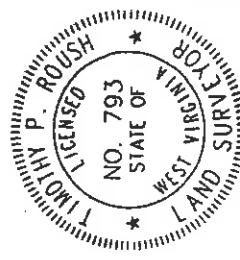
(+) DENOTES LOCATION OF WELL ON UNITED STATES TOPOGRAPHIC MAPS

NOTE

Well Latitude and Longitude and UTM coordinates established by DGPS, (Sub-Meter Mapping Grade) 9/3/03.

FILE NO. 111-06
 DRAWING NO. 1
 SCALE 1" = 1000'
 MINIMUM DEGREE OF ACCURACY
 PROVEN SOURCE OF ELEVATION DGPS
 (Sub-Meter Mapping Grade)

I THE UNDERSIGNED, HEREBY CERTIFY THAT THIS PLAT IS CORRECT TO THE BEST OF MY KNOWLEDGE AND BELIEF AND SHOWS ALL THE INFORMATION REQUIRED BY LAW AND THE REGULATIONS ISSUED AND PRESCRIBED BY THE DEPARTMENT OF MINES
 (SIGNED) *Timothy P. Roush*
 TIMOTHY P. ROUSH PS 793



WEST VIRGINIA
 Division of Environmental Protection
 Office of Oil and Gas
 1356 Hansford St.
 Charleston, West Virginia 25301



(SIGNED) TIMOTHY P. ROUSH PS 793

DATE September 4, 2003
 FARM R.K. Carroll NO. 1
 API WELL NO.

47-017 - 04768N

WELL TYPE: OIL GAS LIQUID INJECTION WASTE DISPOSAL
 (IF "GAS") PRODUCTION STORAGE DEEP SHALLOW
 LOCATION: ELEVATION 840' WATERSHED Ralph's Run
 DISTRICT McClellan COUNTY Doddridge

QUADRANGLE Centerpoint 7.5'
 SURFACE OWNER Roberta L. Reed ACREAGE 40 Ac.
 OIL & GAS ROYALTY OWNER LEASE NO. *4157000057*

PROPOSED WORK: DRILL CONVERT DRILL DEEPER REDRILL FRACTURE OR STIMULATE PLUG OFF OLD FORMATION PERFORATE NEW FORMATION OTHER PHYSICAL CHANGE IN WELL (SPECIFY) Apply for API Number

PLUG AND ABANDON CLEAN OUT AND REPLUG
 TARGET FORMATION Gordon ESTIMATED DEPTH 2,675'
 WELL OPERATOR Fluaharty Enterprises Inc. DESIGNATED AGENT Thomas J. Fluaharty
 ADDRESS P.O. Box 226 ADDRESS P.O. Box 226
 Salem, WV 26426 Salem, WV 26426

