

SURVEYED LONG.
80° 44' 58.2"

305'

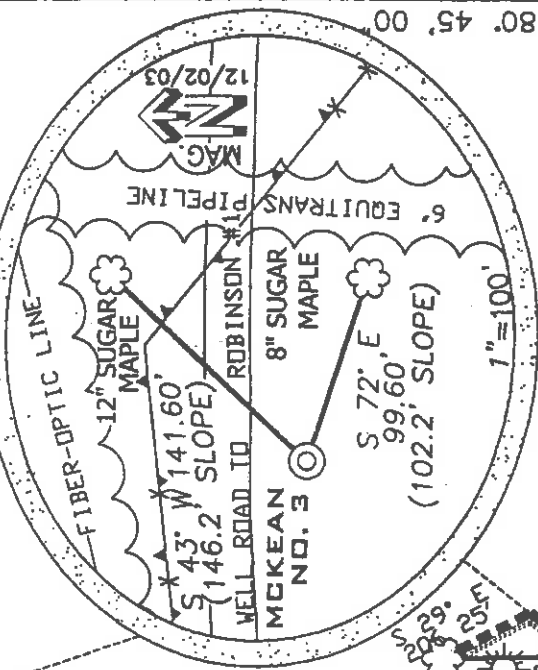
LATITUDE 39° 20' 00"

LONGITUDE 80° 45' 00"

SURVEYED LAT. 39° 18' 14.8"

MCKEAN LEASE 29.9 ACRES ± WELL NO. 3

REFERENCES



PROPOSED WELL
STATE PLANE NAD 87
COORDINATES
N: 294396
E: 1645964

TENSIL D. DAVIS
22.16 ACRES ±
SURFACE

STUMPHOLE AT
FENCE CORNER

GASKINS
18.7 ACRES ±
SURFACE

FENCEPOST AT
3-WAY

1.43 ± N 89° 20' E
BY SUBTRACTING N 37° 30' W
KEY OIL CO &
FRANKLIN BUTLER
15.3 ACRES ± S
SURFACE

N 03° W
429.00'

ADJOINER
N 06° W
244.00'

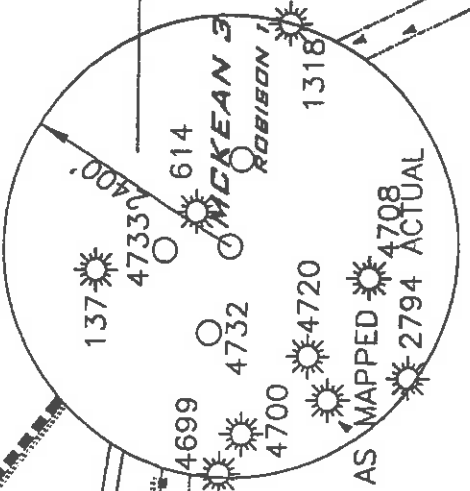
N 81° 05' W
1314.80'

KEY OIL CO &
FRANKLIN BUTLER
14.63 ACRES ±
SURFACE

MCKEAN NO. 3

HAROLD F.
ROBISON, ET AL
26.0 ACRES ±
SURFACE

47-017-0614



REFERENCE NOTES

LEASE AS SHOWN TAKEN
FROM DEED BOOK 22
ON PAGE 351.

OWNERSHIP TAKEN FROM PUBLIC
RECORDS OF DODDRIDGE COUNTY,
WV IN DECEMBER, 2003.

LAT./LONG. BY DIFFERENTIAL
SUBMETER MAPPING GRADE GPS

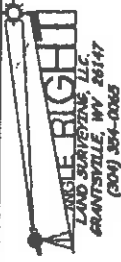
(4)-DENOTES LOCATION ON UNITED STATES TOPOGRAPHIC MAPS

FILE NUMBER 030007
DRAWING NUMBER WP3(W1-36)
SCALE 1"=400'
MINIMUM DEGREE OF ACCURACY 1/200
PROVEN SOURCE OF ELEVATION TOP OF KNOB ELEVATION 1281'

STATE OF WEST VIRGINIA DIVISION OF ENVIRONMENTAL PROTECTION OFFICE OF OIL AND GAS



P.S. 1008
Terry A. Shreve



I THE UNDERSIGNED HEREBY CERTIFY THAT THIS PLAN IS CORRECT TO THE BEST OF MY KNOWLEDGE AND BELIEF AND SHOWS ALL THE INFORMATION REQUIRED BY LAW AND THE REGULATIONS ISSUED AND PRESCRIBED BY THE DEPARTMENT OF ENVIRONMENTAL PROTECTION



DATE DECEMBER 5, 2003
 OPERATORS WELL NO. MCKEAN NO. 3
 API WELL NO. 47-017-4776
 STATE WV COUNTY DODDRIDGE PERMIT 4776

LOCATION ELEVATION 958' WATERSHED MIDDLE ISLAND CREEK
 DISTRICT WEST UNION COUNTY DODDRIDGE LEASE NUMBER 29.9±
 QUADRANGLE WEST UNION 7.5' ACREAGE 29.9±
 SURFACE OWNER FRANKLIN BUTLER AND KEY OIL CO. LEASE ACREAGE 29.9±
 OIL & GAS ROYALTY OWNER FRANKLIN BUTLER AND KEY OIL CO.

PROPOSED WORK: DRILL CONVERT DRILL DEEPER REDRILL FRACTURE OR STIMULATE PLUGS OFF OLD FORMATION
 PERFORATE NEW FORMATION OTHER PHYSICAL CHANGE (SPECIFY) _____

TARGET FORMATION GORDON PLUG & ABANDON CLEAN OUT & REFLUG
 ESTIMATED DEPTH 3000'

WELL OPERATOR KEY OIL COMPANY DESIGNATED AGENT JAN CHAPMAN
 ADDRESS 22 GARTON PLAZA WESTON, WV 26452 ADDRESS 22 GARTON PLAZA WESTON, WV 26452

0000 4776

66 Smithers - Flat - Sidalco 99

DEC 1 2003

State of West Virginia
Division of Environmental Protection
Section of Oil and Gas

AP

Well Operator's Report of Well Work

Farm Name: FRANKLIN BUTLER & KEY OIL COMPANY

Operator Well No.: MCKEEN #3

LOCATION: Elevation: 958'

Quadrangle: WEST UNION

District: WEST UNION

County: DODDRIDGE

Latitude: 11580 Feet South of 39 Deg. 20 Min. 00 Sec.

Longitude: 305 Feet West of 80 Deg. 45 Min. 00 Sec.

Company: KEY OIL COMPANY
22 GARTON PLAZA
WESTON, WV 26452-0000

Agent: JAN CHAPMAN

Inspector: MIKE UNDERWOOD
Permit Issued: 12/29/03
Well Work Commenced: 05/15/04
Well Work Completed: 05/17/04

Verbal Plugging
Permission granted on: _____
Rotary X Cable _____ Rig _____
Total Depth (feet) _____ 2704'
Fresh water depths (ft) _____ 105'
Salt water depths (ft) _____ NONE

Is coal being mined in area (Y/N)? N
Coal Depths (ft): _____ NONE

OPEN FLOW DATA

Keener
Big Injun
Gordon
Producing formation _____
Gas: Initial open flow 103 MCF / d
Final open flow 1,858 MCF / d
Time of open flow between initial and final tests N/A
Static rock pressure 210 psig (surface pressure) after 96 Hours

1854' - 1871'
1888 - 1950'
2496 - 2548'

Pay zone depth (ft) _____
Oil: Initial open flow _____ Bbl / d
Oil: Final open flow show _____ Bbl / d
Hours _____
Hours _____

Second producing formation _____
Gas: Initial open flow Commingled MCF / d
Final open flow Commingled MCF / d
Time of open flow between initial and final tests _____
Static rock pressure _____ psig (surface pressure) after _____ Hours

Pay zone depth (ft) _____
Oil: Initial open flow _____ Bbl / d
Oil: Final open flow _____ Bbl / d
Hours _____
Hours _____

NOTE: ON BACK OF THIS FORM PUT THE FOLLOWING: 1). DETAILS OF PERFORATED INTERVALS, FRACTURING OR STIMULATING, PHYSICAL CHANGE, ETC. 2). THE WELL LOG WHICH IS A SYSTEMATIC DETAILED GEOLOGICAL RECORD OF ALL FORMATIONS, INCLUDING COAL ENCOUNTERED BY THE WELLBORE.

0000 4776

For: KEY OIL COMPANY

Office of Oil & Gas
Office of Chief
DEC 0 2 2004
WV Department of
Environmental Protection
PRESIDENT

By: *[Signature]*
Date: November 26, 2004

DEC 23 2004

McKeen #3 (47-017-4776)
Three Stage Foam Frac – BJ Services

1 st Stage:	Gordon (15 holes) (2496' to 2548')	60 Quality Foam, 500 gal. 15% HCL., 40,000# 20/40 sand, 325,000 SCF N2, 410 bbls foam
2 nd Stage:	Big Injun (25 holes) (1884' to 1938')	60 Quality Foam, 750 gal 15% HCl, 45,000# 20/40 sand, 435,000 SCF N2, 520 bbls foam
3 rd Stage:	Keener (10 holes) (1860' to 1866')	60 Quality Foam, 500 gal 15% HCl, 25,000# 20/40 sand, 275,000 SCF N2, 350 bbls foam

WELL LOG

KB	0
Fill	10
Red Rock	12
Sand & Shale	16
Red Rock	107
Sand & Shale	112
Shale & Red Rock	204
Sand & Shale	228
Sand	438
Sand & Shale	454
Red Rock	580
Sand & Shale & Red Rock	591
Sand	700
Sand & Shale	726
Sand	798
Sand & Shale	841
Little Lime	1724
Big Lime	1765
Keener	1854
Shale	1871
Big Injun	1888
Shale	1950
Weir	2087
Shale	2182
Berea	2292
Shale	2312
Gordon	2496
Shale	2548
TD	2704

1/2" water @ 105'

Gas Checks

1724' – No Show
2013' - 12/10^{ths} – 2" Water
2515' - 10/10^{ths} – 2" Water
2704' - 6/10^{ths} – 2" Water

DEC 23 2004