

SURVEYED LONG.  
80° 44' 58.4"

11680'

LATITUDE 39° 20' 00"

9700'

LONGITUDE 80° 42' 30"

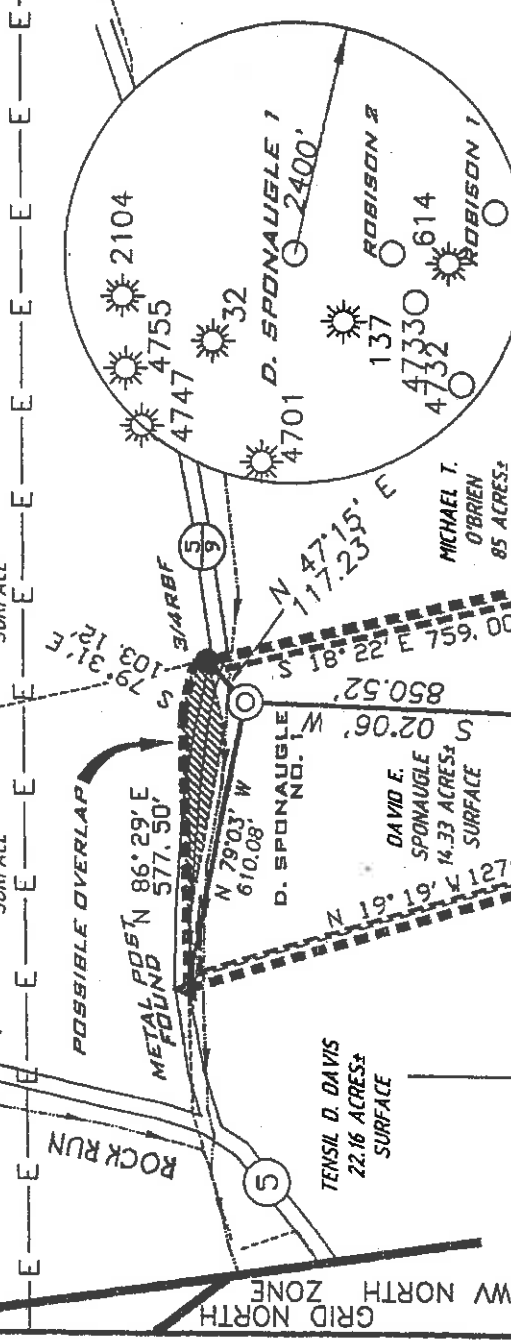
SURVEYED LAT. 39° 18' 24.8"

# D. SPONAUGLE LEASE 14.33 ACRES ± WELL NO. 1

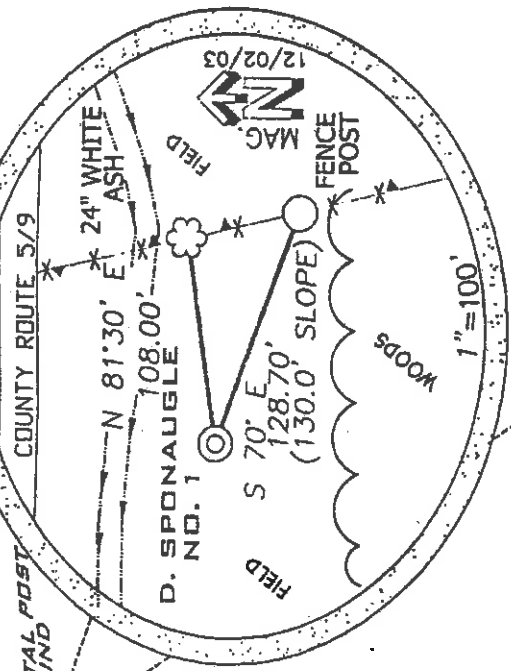
PROPOSED WELL  
STATE PLANE NAD 27  
COORDINATES  
N) 296344  
E) 1646427

JAMES B.  
LAMBERT  
20.15 ACRES±  
SURFACE

MICHAEL T.  
O'BRIEN  
7.81 ACRES±  
SURFACE



## REFERENCES



REFERENCE NOTES  
LEASE AS SHOWN TAKEN  
FROM PLAT BOOK 1B  
ON PAGE 13, AS SURVEYED  
BY DANIEL J. WELLINGS PS 1851.  
OWNERSHIP TAKEN FROM PUBLIC  
RECORDS OF DODDRIDGE COUNTY,  
WV IN DECEMBER, 2003.  
LAT./LONG. BY DIFFERENTIAL  
SUBMETER MAPPING GRADE GPS

(\*) DENOTES LOCATION ON UNITED STATES TOPOGRAPHIC MAPS

I, THE UNDERSIGNED, HEREBY CERTIFY THAT THIS PLAT IS CORRECT TO THE BEST OF MY KNOWLEDGE AND BELIEF AND SHOWS ALL THE INFORMATION REQUIRED BY LAW AND THE REGULATIONS ISSUED AND PRESCRIBED BY THE DEPARTMENT OF ENVIRONMENTAL PROTECTION

P.S.  
1006  
*Terry A. Shreve*



STATE OF WEST VIRGINIA  
DIVISION OF ENVIRONMENTAL PROTECTION  
OFFICE OF OIL AND GAS

WELL TYPE: OIL  GAS  LIQUID INJECTION  WASTE DISPOSAL

OF 'GAS?' PRODUCTION  STORAGE  DEEP  SHALLOW

LOCATION ELEVATION 836' WATERBESHED ROCK RUN

DISTRICT WEST UNION COUNTY SMITHBURG 7.5'

QUADRANGLE SURFACE OWNER DAVID E. & AMY JO SPONAUGLE

OIL & GAS ROYALTY OWNER DAVID E. & AMY JO SPONAUGLE ET AL

PROPOSED WORK: DRILL  CONVERT  WELL DEEPER  REDRILL  FRACTURE OR STIMULATE  PLUG OFF OLD FORMATION

PERFORMATE NEW FORMATION  OTHER PHYSICAL CHANGE (SPECIFY)

TARGET FORMATION ALEXANDER

WELL OPERATOR KEY OIL COMPANY

ADDRESS 22 GARTON PLAZA WESTON, WV 26452  
DESIGNATED AGENT JAN CHAPMAN  
ADDRESS 22 GARTON PLAZA WESTON, WV 26452

DATE: DECEMBER 22, 2003

OPERATORS WELL NO. D. SPONAUGLE 1

API WELL NO. 47-017

STATE COUNTY PERMIT 04784

COUNTY NAME DODDRIDGE

PERMIT

PLUG ABANDON CLEAR OUT & REFLUG ESTIMATED DEPTH 5600'

D000 4784

6-6 Smithtop - First-Sub-lic 99

State of West Virginia  
Division of Environmental Protection  
Section of Oil and Gas

*mt*

Well Operator's Report of Well Work

Farm Name: DAVID E. & AMY JO SPONAUGLE

Operator Well No. : D. SPONAUGLE NO. 1

LOCATION: Elevation: 836'

Quadrangle: SMITHBURG

District: WEST UNION  
Latitude: 9700 Feet South of 39 Deg. 20 Min. 00 Sec.  
Longitude: 11680 Feet West of 80 Deg. 42 Min. 30 Sec.

County: DODDRIDGE

Company: KEY OIL COMPANY  
22 GARTON PLAZA  
WESTON, WV 26452-0000

Agent: JAN CHAPMAN

Inspector: MIKE UNDERWOOD  
Permit Issued: 01/22/04  
Well Work Commenced: 05/19/04  
Well Work Completed: 05/24/04

Verbal Plugging  
Permission granted on: \_\_\_\_\_  
Rotary X Cable \_\_\_\_\_ Rig  
Total Depth ( feet ) \_\_\_\_\_ 5103'  
Fresh water depths ( ft ) \_\_\_\_\_ 452'  
Salt water depths ( ft ) \_\_\_\_\_ 1259'

Is coal being mined in area ( Y / N ) ? N  
Coal Depths ( ft ) : \_\_\_\_\_ 82' (4')

OPEN FLOW DATA

Warren  
Speechley  
Rileys  
Benson  
Producing formation \_\_\_\_\_ Alexander  
Gas: Initial open flow \_\_\_\_\_ No Show \_\_\_\_\_ MCF / d  
Final open flow \_\_\_\_\_ 2,232 \_\_\_\_\_ MCF / d  
Time of open flow between initial and final tests \_\_\_\_\_ N/A \_\_\_\_\_ Hours  
Static rock pressure \_\_\_\_\_ 1860 \_\_\_\_\_ psig ( surface pressure ) after \_\_\_\_\_ 96 \_\_\_\_\_ Hours

3094' - 3139'  
3147' - 3234'  
4270' - 4690'  
4749' - 4758'  
4994' - 5103'

Second producing formation \_\_\_\_\_  
Gas: Initial open flow \_\_\_\_\_ Commingled \_\_\_\_\_ MCF / d  
Final open flow \_\_\_\_\_ Commingled \_\_\_\_\_ MCF / d  
Time of open flow between initial and final tests \_\_\_\_\_ \_\_\_\_\_ Hours  
Static rock pressure \_\_\_\_\_ \_\_\_\_\_ psig ( surface pressure ) after \_\_\_\_\_ \_\_\_\_\_ Hours

Pay zone depth ( ft ) \_\_\_\_\_

Oil: Initial open flow \_\_\_\_\_ Bbl / d

Oil: Final open flow \_\_\_\_\_ Bbl / d

Time of open flow between initial and final tests \_\_\_\_\_ Hours

Static rock pressure \_\_\_\_\_ psig ( surface pressure ) after \_\_\_\_\_ Hours

NOTE: ON BACK OF THIS FORM PUT THE FOLLOWING: 1). DETAILS OF PERFORATED INTERVALS, FRACTURING OR STIMULATING, PHYSICAL CHANGE, ETC. 2). THE WELL LOG WHICH IS A SYSTEMATIC DETAILED GEOLOGICAL RECORD OF ALL FORMATIONS, INCLUDING COAL ENCOUNTERED BY THE WELLBORE.

For: KEY OIL COMPANY

By:   
Date: November 23, 2004

0000 4784  
RECEIVED  
Office of Oil & Gas  
Office of Chief  
DEC 02 2004  
WV Department of  
Environment

DEC 23 2004

D. Sponaugle #1 (47-017-4784)  
 Four Stage Foam Frac - Universal Well Services

1 <sup>st</sup> Stage:	Alexander ( 14 holes ) ( 5036' to 5090.50' )	60 Quality Foam, 500 gal. 15% HCL, 60,000# 20/40 sand, 565,000 SCF N2, 817 bbls foam
2 <sup>nd</sup> Stage:	Benson ( 11 holes ) ( 4768' to 4769.50' ) Third Riley ( 2 holes ) ( 4688.50' & 4688.75' )	60 Quality Foam, 750 gal 15% HCl, 40,000# 20/40 sand, 454,000 SCF N2, 623 bbls foam
3 <sup>rd</sup> Stage:	Riley ( 13 holes ) ( 4298.50' to 4334.25' )	60 Quality Foam, 750 gal 15% HCl 5,000# 80/100 sand, 35,000# 20/40 sand, 448,000 SCF N2, 618bbls foam
4 <sup>th</sup> Stage:	Speechley ( 6 holes ) ( 3194.50' to 3235' ) Warren ( 7 holes ) ( 3122.25' to 3137.50' )	60 Quality Foam, 750 gal 15% HCl 5,000# 80/100 sand, 45,000# 20/40 sand, 517,000 SCF N2, 728bbls foam

		<u>WELL LOG</u>	
KB	0	10	
Sand & Gravel	10	14	
Shale & Red Rock	14	82	
Coal	82	86	
Sand & Shale	86	120	
Sand & Shale & Red Rock	120	356	
Sand	356	389	
Sand & Shale	389	421	
Red Rock & Shale	421	460	Damp @ 452'
Sand	460	483	
Sand & Shale	483	664	
Red Rock & Shale	664	740	
Sand & Shale	740	1625	Wet @ 1259'
Little Lime	1625	1665	
Big Lime	1665	1761	
Big Injun	1761	1810	
Shale	1810	1822	
Squaw	1822	1864	
Shale	1864	2010	Gas Checks Soaped Hole
Weir	2010	2094	
Shale	2094	2210	
Berea	2210	2229	
Shale	2229	2413	
Gordon	2413	2464	Oil @ 2601'
Shale	2464	3094	
Warren	3094	3139	
Shale	3139	3147	
Speechley	3147	3234	
Shale	3234	3424	
Balltown	3424	4202	
Shale	4202	4270	
Riley	4270	4336	
Shale	4336	4650	
Third Riley	4650	4704	
Shale	4704	4749	
Benson	4749	4758	
Shale	4758	4994	
Alexander	4994	5103	
TD	5103		

DEC 23 2004