

SURVEYED LONG.
80° 41' 44.5"

8270'

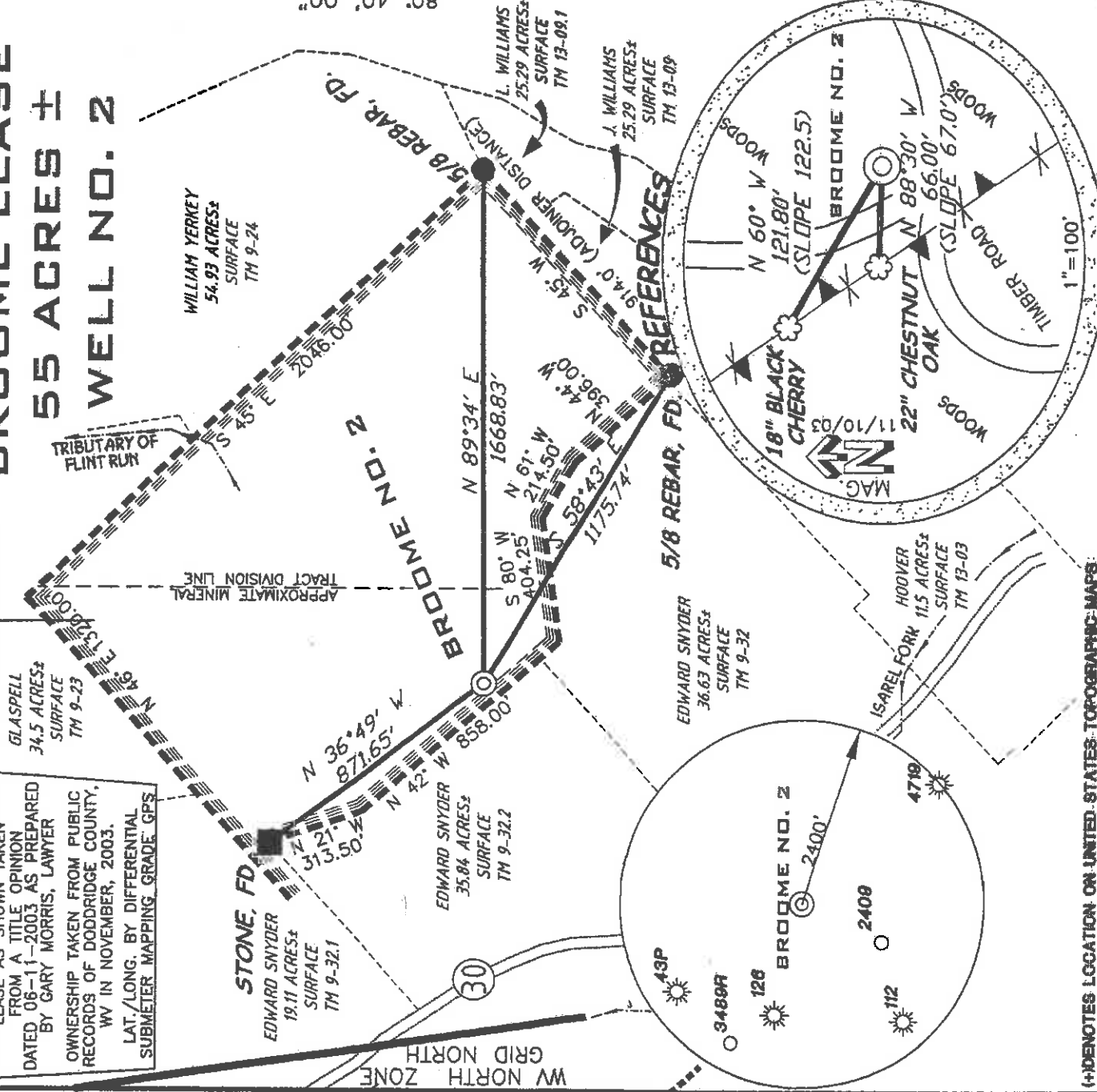
REFERENCE NOTES

LEASE AS SHOWN TAKEN FROM A TITLE OPINION DATED 06-11-2003 AS PREPARED BY GARY MORRIS, LAWYER OWNERSHIP TAKEN FROM PUBLIC RECORDS OF DODDRIDGE COUNTY, WV IN NOVEMBER, 2003. LAT./LONG. BY DIFFERENTIAL SUBMETER MAPPING GRADE GPS

LATITUDE 39° 20' 00"

**BROOME LEASE
55 ACRES ±
WELL NO. 2**

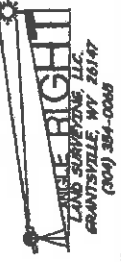
SURVEYED LAT. 39° 19' 53.5" 735'



(H) DENOTES LOCATION ON UNITED STATES TOPOGRAPHIC MAPS

I THE UNDERSIGNED HEREBY CERTIFY THAT THIS PLAN IS CORRECT TO THE BEST OF MY KNOWLEDGE AND BELIEF AND SHOWS ALL THE INFORMATION REQUIRED BY LAW AND THE REGULATIONS ISSUED AND PRESCRIBED BY THE DEPARTMENT OF ENVIRONMENTAL PROTECTION

P.S. 1008
Terry A. Shreve



FILE NUMBER 030037
DRAWING NUMBER WP1(W1-34)
SCALE 1"=500'
MINIMUM DEGREE OF ACCURACY 1/200
PROVEN SOURCE OF ELEVATION JUNCTION OF ROADS ELEVATION 904'

STATE OF WEST VIRGINIA
DIVISION OF ENVIRONMENTAL PROTECTION
OFFICE OF OIL AND GAS

WELL TYPE OIL GAS LIQUID INJECTION WASTE DISPOSAL
(IF 'GAS') PRODUCTION STORAGE DEEP SHALLOW PERMIT
LOCATION ELEVATION 1212' WATERSHED TRIBUTARY OF FLINT RUN
DISTRICT GRANT COUNTY DODDRIDGE
QUADRANGLE SMITHBURG 7.5' LEASE NUMBER
SURFACE OWNER CAROL LYNN LISTON AND DAVID K. LISTON ACREAGE 55 AC±
OIL & GAS ROYALTY OWNER ED. BROOME, INC. LEASE ACREAGE 55 AC±
PROPOSED WORK: DRILL CONVERT DRILL DEEPER REDRILL FRACTURE OR STIMULATE PLUG OFF OLD FORMATION
PERFORMATE NEW FORMATION OTHER PHYSICAL CHANGE (SPECIFY)
TARGET FORMATION GORDON CLEAN OUT & REPLUG
WELL OPERATOR KEY OIL COMPANY DESIGNATED AGENT JAN CHAPMAN
ADDRESS 22 GARTON PLAZA WESTON, WV 26452 ADDRESS 22 GARTON PLAZA WESTON, WV 26452

0000 4792

(99 Smithston - Flint - Sedalia 6-6)

State of West Virginia
Division of Environmental Protection
Section of Oil and Gas

Well Operator's Report of Well Work

Farm Name: CAROL LYNN & DAVID K. LISTON

Operator Well No.: BROOME NO. 2

LOCATION: Elevation: 1212'

Quadrangle: SMITHBURG

District: WEST UNION
Latitude: 735 Feet South of 39 Deg. 20 Min. 00 Sec.
Longitude: 8270 Feet West of 80 Deg. 40 Min. 00 Sec.

County: DODDRIDGE

Company: KEY OIL COMPANY
22 GARTON PLAZA
WESTON, WV 26452-0000

Agent: JAN CHAPMAN

Inspector: MIKE UNDERWOOD
Permit Issued: 05/04/04
Well Work Commenced: 08/23/04
Well Work Completed: 08/27/04

Verbal Plugging
Permission granted on: _____
Rotary X Cable Rig
Total Depth (feet) 3048'
Fresh water depths (ft) 46'
Salt water depths (ft) 1486'

Is coal being mined in area (Y / N)? N
Coal Depths (ft): 218' (2')

OPEN FLOW DATA

Casing & Tubing Size	Used in Drilling	Left In Well	Cement Fill Up Cu. Ft.
8 5/8"	1234'	1234'	275 sks To Surface
4 1/2"	2950'	2950'	250 sks.

Keener
Big Injun
Gordon

Producing formation _____
Gas: Initial open flow No Show MCF / d Oil: Initial open flow _____ Bbl / d
Final open flow 731 MCF / d Oil: Final open flow show _____ Bbl / d
Time of open flow between initial and final tests N/A _____ Hours
Static rock pressure 250 psig (surface pressure) after 96 _____ Hours

Second producing formation _____
Gas: Initial open flow Commingled MCF / d Oil: Initial open flow _____ Bbl / d
Final open flow Commingled MCF / d Oil: Final open flow _____ Bbl / d
Time of open flow between initial and final tests _____ Hours
Static rock pressure _____ psig (surface pressure) after _____ Hours

RECEIVED
Office of Oil & Gas
Office of Chief
SEP 10 2004
WV Department of
Environmental Protection

NOTE: ON BACK OF THIS FORM PUT THE FOLLOWING: 1). DETAILS OF PERFORATED INTERVALS, FRACTURING OR STIMULATING, PHYSICAL CHANGE, ETC. 2). THE WELL LOG WHICH IS A SYSTEMATIC DETAILED GEOLOGICAL RECORD OF ALL FORMATIONS, INCLUDING COAL ENCOUNTERED BY THE WELLBORE.

0000 4792

For: KEY OIL COMPANY

By: 
Date: September 2, 2004

PRESIDENT

OCT 15 2004

Broome #2 (47-017-4792)
Three Stage Foam Frac – Universal Well Services

1 st Stage:	Gordon (12 holes) (2816' to 2824')	60 Quality Foam, 500 gal. 15% HCl, 40,000# 20/40 sand, 325,000 SCF N ₂ , 410 bbls foam
2 nd Stage:	Big Injun (20 holes) (2182' to 2222')	60 Quality Foam, 500 gal 15% HCl, 30,000# 20/40 sand, 295,000 SCF N ₂ , 330 bbls foam
3 rd Stage:	Keener (10 holes) (2113' to 2118')	60 Quality Foam, 500 gal 15% HCl 25,000# 20/40 sand, 235,000 SCF N ₂ , 310 bbls foam

WELL LOG

KB	0	10	
Clay	10	15	
Sand	15	22	
Shale & Red Rock	22	56	Damp @ 46'
Sand & Shale	56	143	
Red Rock	143	148	
Sand & Shale	148	218	
Coal	218	220	
Sand & Shale	220	325	
Sand & Red Rock & Shale	325	551	
Sand & Shale	551	950	
Red Rock	950	991	
Sand & Shale	991	1930	1" water @ 1486'
Sand	1930	2004	
Blue Monday	2004	2064	
Big Lime	2064	2110	Oil odor @ 2109'
Keener	2110	2121	
Lime & Shale	2121	2180	
Big Injun	2180	2246	
Shale	2246	2380	Gas Checks
Weir	2380	2462	Soaped Hole
Shale	2462	2782	
Gordon	2782	2838	
Shale	2838	3048	
TD	3048		

OCT 15 2004