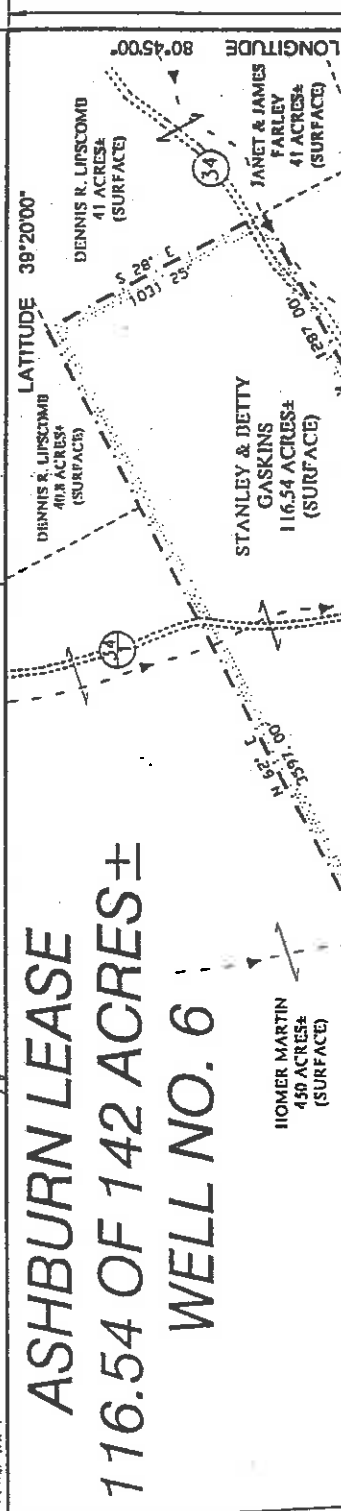


ASHBURN LEASE 116.54 OF 142 ACRES± WELL NO. 6

LONG. 80°46'13.3"

LATITUDE 39°20'00"

5,790'



LONGITUDE 80°45'00"

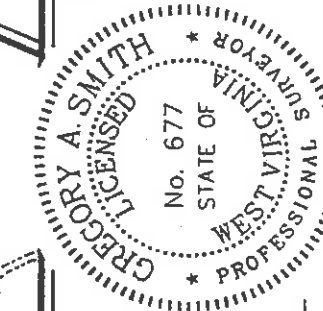
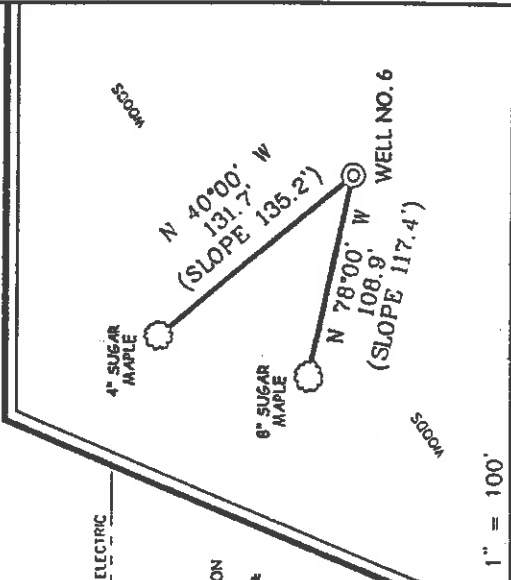
NORTH

WELL NO. 6
STATE PLANE
COORDINATES
(N) 298,280
(E) 1,640,561

NOTES ON SURVEY

1. TIES TO WELLS AND CORNERS ARE BASED ON STATE PLANE GRID NORTH WV NORTH ZONE NAD '27.
2. TIES TO REFERENCES ARE BASED ON MAGNETIC NORTH 01/20/04.
3. LEASE BOUNDARY SHOWN HEREON TAKEN FROM A TITLE OPINION DATED JANUARY 8, 2001 AS PREPARED BY CARY MORRIS LAWYER.
4. SURFACE OWNER AND ADJOINER INFORMATION TAKEN FROM THE ASSESSOR AND COUNTY CLERK RECORDS OF DODDRIDGE COUNTY IN SEPTEMBER, 2002.
5. WELL LAT./LONG. ESTABLISHED BY DGPS (SUBMETER MAPPING GRADE).

REFERENCES



I THE UNDERSIGNED, HEREBY CERTIFY THAT THIS PLAT IS CORRECT TO THE BEST OF MY KNOWLEDGE AND BELIEF AND SHOWS ALL THE INFORMATION REQUIRED BY LAW AND THE REGULATIONS ISSUED AND PRESCRIBED BY THE DIVISION OF ENVIRONMENTAL PROTECTION.

P.S. *Gregory A. Smith*
677

(*) DENOTES LOCATION OF WELL ON UNITED STATES TOPOGRAPHIC MAPS.

DATE JANUARY 21, 2014
OPERATORS WELL NO. ASHBURN NO. 6
API WELL NO. 47 STATE 017 COUNTY 04799 PERMIT



STATE OF WEST VIRGINIA
DIVISION OF ENVIRONMENTAL PROTECTION
OFFICE OF OIL AND GAS

MINIMUM DEGREE OF ACCURACY 1/200 FILE NO. 4993P6 (147-54)
PROVEN SOURCE OF ELEVATION DGPS (SUBMETER MAPPING GRADE) SCALE 1"= 800'

WELL TYPE: OIL LIQUID WASTE GAS INJECTION DISPOSAL *GAS* PRODUCTION STORAGE DEEP SHALLOW X

LOCATION: ELEVATION 849' WATERSHED PIGGIN RUN
DISTRICT WEST UNION COUNTY DODDRIDGE
SURFACE OWNER STANLEY AND BETTY GASKINS QUADRANGLE WEST UNION 7.5'
ROYALTY OWNER ORPHA ASHBURN ET AL ACREAGE 116.54±
LEASE NO. 116.54 OF 142±
PROPOSED WORK: DRILL CONVERT DRILL DEEPER REDRILL FRACTURE OR STIMULATE X PLUG OFF OLD FORMATION PERFORATE NEW FORMATION PLUG AND ABANDON CLEAN OUT AND REPLUG OTHER GORDON
PHYSICAL CHANGE IN WELL (SPECIFY) ESTIMATED DEPTH 2,900'

WELL OPERATOR KEY OIL COMPANY DESIGNATED AGENT JAN CHAFMAN
ADDRESS 22 GARTON PLAZA WESTON, WV 26452 ADDRESS 22 GARTON PLAZA WESTON, WV 26452

0000

4799

6-6(99)

State of West Virginia
Division of Environmental Protection
Section of Oil and Gas

Well Operator's Report of Well Work

Farm Name: STANLEY & BETTY GASKINS

Operator Well No. : ASHBURN NO. 6

LOCATION: Elevation: 849'

Quadrangle: WEST UNION

District: WEST UNION County: DODDRIDGE
Latitude: 7750 Feet South of 39 Deg. 20 Min. 00 Sec.
Longitude: 5790 Feet West of 80 Deg. 45 Min. 00 Sec.

Company: KEY OIL COMPANY
22 GARTON PLAZA
WESTON, WV 26452-0000

Agent: JAN CHAPMAN

Inspector: MIKE UNDERWOOD
Permit Issued: 03/17/04
Well Work Commenced: 07/14/05
Well Work Completed: 07/16/05
Verbal Plugging
Permission granted on: _____ Rig
Rotary X Cable _____ 2695'
Total Depth (feet) _____ 46'
Fresh water depths (ft) _____ 1010'
Salt water depths (ft) _____

Is coal being mined in area (Y / N)? N
Coal Depths (ft) : NONE

OPEN FLOW DATA

Keener
Big Injun
Gordon
Producing formation _____ MCF / d _____ MCF / d _____ MCF / d
Gas: Initial open flow 84 Oil: Initial open flow _____ Bbl / d
Final open flow 2,316 Oil: Final open flow show Bbl / d
Time of open flow between initial and final tests _____ N/A _____ Hours
Static rock pressure 290 psig (surface pressure) after 96 _____ Hours

Second producing formation _____ Pay zone depth (ft) _____
Gas: Initial open flow _____ MCF / d Oil: Initial open flow _____ Bbl / d
Final open flow _____ MCF / d Oil: Final open flow _____ Bbl / d
Time of open flow between initial and final tests _____ Hours
Static rock pressure _____ psig (surface pressure) after _____ Hours

NOTE: ON BACK OF THIS FORM PUT THE FOLLOWING: 1). DETAILS OF PERFORATED INTERVALS, FRACTURING OR STIMULATING, PHYSICAL CHANGE, ETC. 2). THE WELL LOG WHICH IS A SYSTEMATIC DETAILED GEOLOGICAL RECORD OF ALL FORMATIONS, INCLUDING COAL ENCOUNTERED BY THE WELLBORE.

For: KEY OIL COMPANY

By: [Signature]
Date: May 8, 2006



MAY 12 2006

D000 4799

Ashburn #6 (47-017-4799)
Two Stage Foam Frac - BJ Services

1st Stage: Gordon(14 holes) (2526' to 2539')

60 Quality Foam.
500 gal. 15% HCl., 25,000# 20/40 sand,
225,000 SCF N2, 275 bbls foam

2nd Stage: Big Injun (15 holes) (1860' to 1910')
Keener (10 holes) (1824' to 1838')

60 Quality Foam,
500 gal 15% HCl, 25,000# 20/40 sand,
220,000 SCF N2, 260 bbls foam

WELL LOG

KB	0	10	
Sand & Shale	10	30	
Red Rock & Shale	30	110	
Sand & Shale	110	290	½" water @ 46
Sand	290	310	
Sand & Shale	310	435	
Red Rock	435	455	
Sand & Shale	455	480	
Lime	480	500	
Sand & Shale	500	602	
Sand	602	634	
Red Rock	634	670	
Sand	670	685	
Red Rock	685	728	
Sand & Shale	728	1010	Damp @ 1010'
Sand	1010	1050	
Shale & Red Rock	1050	1728	
Little Lime	1728	1775	
Big Lime	1775	1820	
Keener	1820	1856	
Big Injun	1856	1914	
Shale	1914	2088	
Weir	2088	2182	
Shale	2182	2297	
Berea	2297	2307	
Sand & Shale	2307	2492	
Gordon	2492	2542	
Sand & Shale	2542	2695	
TD	2695		

Gas Checks

1728' - No Show
2478 - 4/10^{ths} 2" w/water

MAY 12 2006