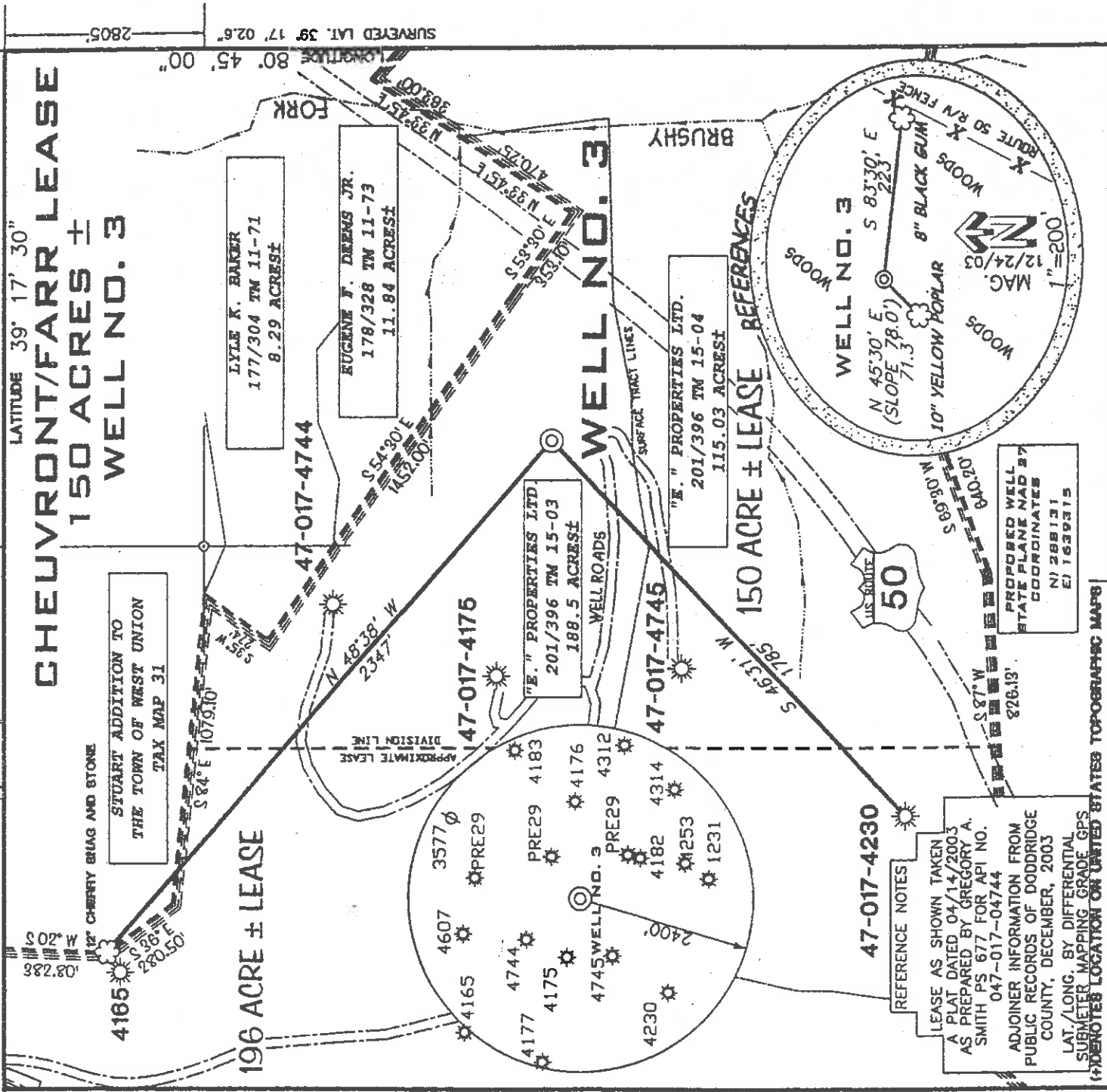


SURVEYED LONG. 80° 46' 27.4"

6860'

SURVEYED LAT. 39° 17' 02.6" 2805'

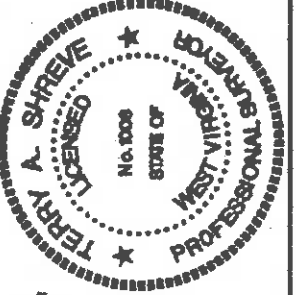


FILE NUMBER 030044  
 DRAWING NUMBER WP3(W1-39)  
 SCALE 1"=500'  
 MINIMUM DEGREE OF ACCURACY 1/200  
 PROVEN SOURCE OF ELEVATION TOP OF KNOB  
 ELEVATION 1214'

STATE OF WEST VIRGINIA  
 DIVISION OF ENVIRONMENTAL PROTECTION  
**OFFICE OF OIL AND GAS**

THE UNDERSIGNED HEREBY CERTIFY THAT THIS PLAT IS CORRECT TO THE BEST OF MY KNOWLEDGE AND BELIEF AND SHOWS ALL THE INFORMATION REQUIRED BY LAW AND THE REGULATIONS ISSUED AND PRESCRIBED BY THE DEPARTMENT OF ENVIRONMENTAL PROTECTION

P.S. 1006  
*Terry A. Shreve*



DATE: JANUARY 06, 2004  
 OPERATORS WELL NO. CHEUVRONT/FARR NO. 3  
 API WELL NO. 47-017-04804  
 STATE COUNTY PERMIT

WELL TYPE OIL  GAS  LIQUID INJECTION  WASTE DISPOSAL   
 (IF 'GAS') PRODUCTION  STORAGE  DEEP  SHALLOW

LOCATION ELEVATION 1167' WATERSHED BRUSHY FORK  
 DISTRICT WEST UNION COUNTY DODDRIDGE

QUADRANGLE WEST UNION 7.5' LEASE NUMBER  
 SURFACE OWNER "E." PROPERTIES LTD. ACREAGE 188.5±  
 OIL & GAS ROYALTY OWNER TRIO PETROLEUM ET AL LEASE ACREAGE 150±

PROPOSED WORK: DRILL  CONVERT  DRILL DEEPER  REFINEL  FRACTURE OR STIMULATE  PLUG OFF OLD FORMATION  
 PERFORATE NEW FORMATION  OTHER PHYSICAL CHANGE (SPECIFY)

TARGET FORMATION GORDON CLEAN OUT & REPLUG  
 WELL OPERATOR KEY OIL COMPANY ESTIMATED DEPTH 3000'  
 ADDRESS 22 GARTON PLAZA, WESTON, WV 26452 ADDRESS 22 GARTON PLAZA, WESTON, WV 26452  
 DESIGNATED AGENT JAN CHAPMAN

0000 4804

(Smithton - Flint - Seabrook 99) 6-6

MAP 118 2004

State of West Virginia  
Division of Environmental Protection  
Section of Oil and Gas

*MP*

Well Operator's Report of Well Work

Farm Name: "E" PROPERTIES LTD. Operator Well No. : CHEUVRONT / FARR NO. 3

LOCATION: Elevation: 1167' Quadrangle: WEST UNION

County: DODDRIDGE

District: WEST UNION

Latitude: 2805 Feet South of 39 Deg. 17 Min. 30 Sec.

Longitude: 6860 Feet West of 80 Deg. 45 Min. 00 Sec.

Company: KEY OIL COMPANY  
22 GARTON PLAZA  
WESTON, WV 26452-0000

Agent: JAN CHAPMAN

Inspector: MIKE UNDERWOOD  
Permit Issued: 03/11/04  
Well Work Commenced: 09/30/04  
Well Work Completed: 10/03/04

Verbal Plugging  
Permission granted on: \_\_\_\_\_  
Rotary X Cable \_\_\_\_\_ Rig  
Total Depth ( feet ) 2870'  
Fresh water depths ( ft ) 17', 100'  
Salt water depths ( ft ) NONE

Is coal being mined in area ( Y / N )? N  
Coal Depths ( ft ): 16' (3')

OPEN FLOW DATA

Producing formation Big Injun  
Gas: Initial open flow 60 MCF / d Oil: Initial open flow 0 Bbl / d  
Final open flow 1,517 MCF / d Oil: Final open flow show Bbl / d  
Time of open flow between initial and final tests N/A Hours  
Static rock pressure 330 psig ( surface pressure ) after 96 Hours

Second producing formation \_\_\_\_\_  
Gas: Initial open flow \_\_\_\_\_ MCF / d Oil: Initial open flow \_\_\_\_\_ Bbl / d  
Final open flow \_\_\_\_\_ MCF / d Oil: Final open flow \_\_\_\_\_ Bbl / d  
Time of open flow between initial and final tests \_\_\_\_\_ Hours  
Static rock pressure \_\_\_\_\_ psig ( surface pressure ) after \_\_\_\_\_ Hours

NOTE: ON BACK OF THIS FORM PUT THE FOLLOWING: 1). DETAILS OF PERFORATED INTERVALS, FRACTURING OR STIMULATING, PHYSICAL CHANGE, ETC. 2). THE WELL LOG WHICH IS A SYSTEMATIC DETAILED GEOLOGICAL RECORD OF ALL FORMATIONS, INCLUDING COAL ENCOUNTERED BY THE WELLBORE.

For: KEY OIL COMPANY

By: *Jan Chapman*  
Date: February 20, 2005

RECEIVED  
Office of Oil & Gas  
Office of Chief  
FEB 28 2005  
PRESIDENT  
WV Department of  
Environmental Protection

0000 4804

MAR 11 2005

Casing & Tubing Size	Used in Drilling	Left in Well	Cement Fill Up Cu. Ft.
8 5/8"	1167'	1167'	265 sks To Surface
4 1/2"	2727'	2727'	250 sks.

Chevron/Farr #3 (47-017-4804)  
Two Stage Foam Frac – BJ Services

1<sup>st</sup> Stage: Gordon ( 13 holes ) ( 2598' to 2660' )

60 Quality Foam.  
500 gal. 15% HCL., 25,000# 20/40 sand,  
217,000 SCF N2, 255 bbls foam

2<sup>nd</sup> Stage: Big Injun ( 15 holes ) ( 1940' to 1963' )

60 Quality Foam,  
500 gal 15% HCl, 30,000# 20/40 sand,  
295,000 SCF N2, 330 bbls foam

WELL LOG

KB	0	10
Clay	10	16
Coal	16	19
Sand & Shale	19	75
Shale & Red Rock	75	173
Sand & Shale	173	225
Limestone	225	258
Sand & Shale	258	661
Red Rock	661	702
Sand & Shale	702	848
Red Rock	848	890
Sand & Shale	890	1840
Red Rock	1840	1860
Sand & Shale	1860	1928
Little Lime	1928	1928
Big Lime	1928	2020
Big Injun	2020	2156
Shale	2020	2256
Weir	2156	2256
Shale	2256	2359
Berea	2359	2372
Shale	2372	2560
Gordon	2560	2610
Sand & Shale	2610	2800
TD	2800	

½" water @ 17'

½" water @ 100'

**Gas Checks**

1917' – No Show  
2200' – 2/10<sup>ths</sup> – 2" w/water

MAR 11 2005