

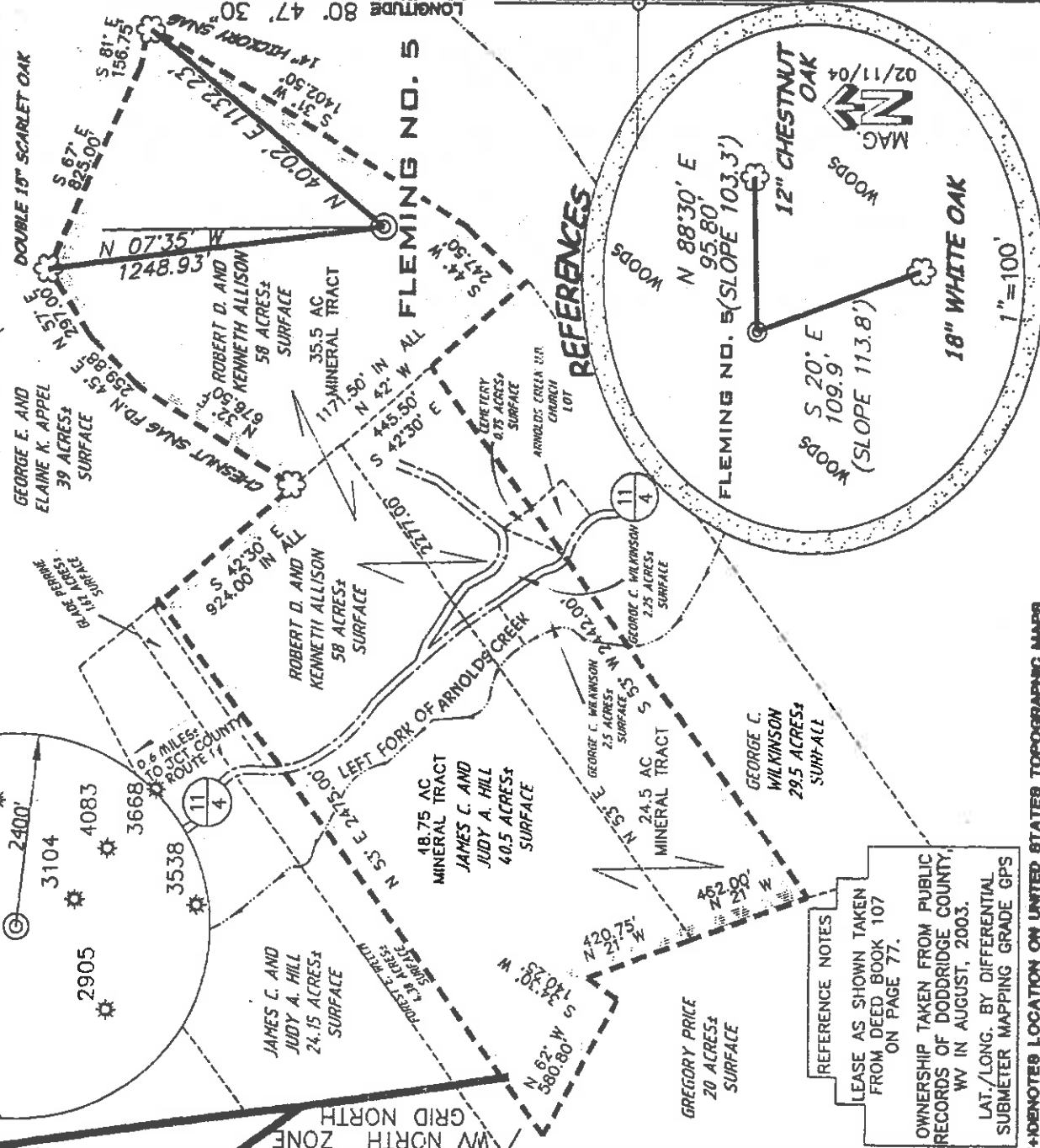
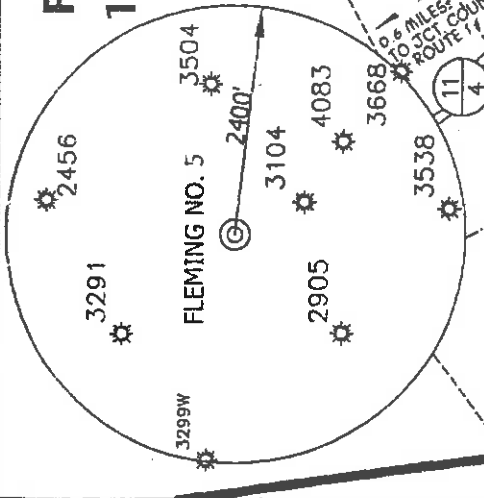
SURVEYED LONG. 80° 47' 31.0"

LATITUDE 39° 17' 30"

SURVEYED LAT. 39° 15' 50.1" LONGITUDE 80° 47' 30"

FLEMING LEASE 108.75 ACRES ± WELL NO. 5

PROPOSED WELL STATE PLANE NAD 27 COORDINATES
N) 280869
E) 1634207



REFERENCES

REFERENCE NOTES
LEASE AS SHOWN TAKEN FROM DEED BOOK 107 ON PAGE 77.

OWNERSHIP TAKEN FROM PUBLIC RECORDS OF DODDRIDGE COUNTY, WV IN AUGUST, 2003.

LAT./LONG. BY DIFFERENTIAL SUBMETER MAPPING GRADE GPS

(*) DENOTES LOCATION ON UNITED STATES TOPOGRAPHIC MAPS

FILE NUMBER 030022
DRAWING NUMBER WPA(W1-55)
SCALE 1"=600'
MINIMUM DEGREE OF ACCURACY 1/200
PROVEN SOURCE OF ELEVATION TOP OF KNOB ELEVATION 1335'



P.S. 1008
Terry A. Shreve
TERRY A. SHREVE
PROFESSIONAL SURVEYOR
No. 1008
STATE OF WEST VIRGINIA
LICENSED

I, THE UNDERSIGNED HEREBY CERTIFY THAT THIS PLAN IS CORRECT TO THE BEST OF MY KNOWLEDGE AND BELIEF AND SHOWS ALL THE INFORMATION REQUIRED BY LAW AND THE REGULATIONS ISSUED AND PRESCRIBED BY THE DEPARTMENT OF ENVIRONMENTAL PROTECTION

STATE OF WEST VIRGINIA
DIVISION OF ENVIRONMENTAL PROTECTION
OFFICE OF OIL AND GAS

DATE: FEBRUARY 20, 2004

OPERATORS WELL NO. FLEMING NO. 5

API WELL NO. 47-017-04821

STATE COUNTY PERMIT

WELL TYPE: OIL GAS LIQUID INJECTION WASTE DISPOSAL
IF 'GAS' PRODUCTION STORAGE DEEP SHALLOW

LOCATION ELEVATION 1108' WATERSHED LEFT FORK OF ARNOLDS CREEK

DISTRICT WEST UNION COUNTY DODDRIDGE

QUADRANGLE WEST UNION 7.5' LEASE NUMBER

SURFACE OWNER JOHN S. TRENT ACREAGE 58 AC ±

OIL & GAS ROYALTY OWNER THOMAS J. FLEMING HEIRS LEASE ACREAGE 108.75 AC ±

PROPOSED WORK: DRILL CONVERT DEEPEN REDELL FRACTURE OR STIMULATE PLUS OFF OLD FORMATION

PERFORATE NEW FORMATION OTHER PHYSICAL CHANGE (SPECIFY)

TARGET FORMATION GORDON PLUG & ABANDON CLEAN OUT & REPLUG ESTIMATED DEPTH 3000'

WELL OPERATOR KEY OIL COMPANY DESIGNATED AGENT JAN CHAPMAN

ADDRESS 22 GARTON PLAZA WESTON, WV 26452 ADDRESS 22 GARTON PLAZA WESTON, WV 26452

0000 4821

6-6 Straight core - Blueston Creek 133

State of West Virginia
Division of Environmental Protection
Section of Oil and Gas

124

Well Operator's Report of Well Work

Farm Name: JOHN S. TRENT

Operator Well No. : FLEMING #5

LOCATION: Elevation: 1108'

Quadrangle: WEST UNION

District: WEST UNION
Latitude: 10170 Feet South of 39 Deg. 17 Min. 30 Sec.
Longitude: 70 Feet West of 80 Deg. 47 Min. 30 Sec.

County: DODDRIDGE

Company: KEY OIL COMPANY
22 GARTON PLAZA
WESTON, WV 26452-0000

Agent: JAN CHAPMAN

Inspector: MIKE UNDERWOOD
Permit Issued: 04/02/04
Well Work Commenced: 04/23/04
Well Work Completed: 04/25/04

Verbal Plugging
Permission granted on: _____
Rotary X Cable _____ Rig
Total Depth (feet) 2840'
Fresh water depths (ft) 22', 385'
Salt water depths (ft) NONE

Is coal being mined in area (Y / N) ? N
Coal Depths (ft) : 27' (3')

OPEN FLOW DATA

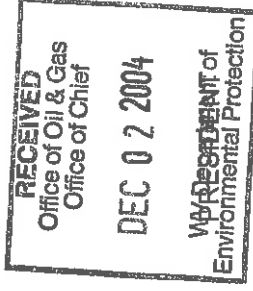
Producing formation Big Injun
Gas: Initial open flow 179 MCF / d Gordon 1904' - 1991'
Final open flow 1,905 MCF / d Oil: Initial open flow 0 Bbl / d 2550' - 2591'
Time of open flow between initial and final tests N/A Oil: Final open flow show Bbl / d
Static rock pressure 760 psig (surface pressure) after 96 Hours

Second producing formation _____ Pay zone depth (ft) _____
Gas: Initial open flow Commingled MCF / d Oil: Initial open flow _____ Bbl / d
Final open flow Commingled MCF / d Oil: Final open flow _____ Bbl / d
Time of open flow between initial and final tests _____ Hours
Static rock pressure _____ psig (surface pressure) after _____ Hours

NOTE: ON BACK OF THIS FORM PUT THE FOLLOWING: 1). DETAILS OF PERFORATED INTERVALS, FRACTURING OR STIMULATING, PHYSICAL CHANGE, ETC. 2). THE WELL LOG WHICH IS A SYSTEMATIC DETAILED GEOLOGICAL RECORD OF ALL FORMATIONS, INCLUDING COAL ENCOUNTERED BY THE WELLBORE.

For: KEY OIL COMPANY

By: *[Signature]*
Date: November 23, 2004



DEC 23 2004

0000 4821

Fleming #5 (47-017-4821)
Two Stage Foam Frac – Universal Well Services

1 st Stage:	Gordon (15 holes) (2575' to 2590')	60 Quality Foam, 500 gal. 15% HCL., 40,000# 20/40 sand, 325,000 SCF N2, 410 bbls foam
2 nd Stage:	Big Injun (25 holes) (1920' to 1986')	60 Quality Foam, 750 gal 15% HCl, 45,000# 20/40 sand, 435,000 SCF N2, 520 bbls foam

	<u>WELL LOG</u>		
KB	0	10	
Fill	10	16	
Shale	16	27	Damp @ 22'
Coal	27	30	
Sand & Shale	30	234	
Shale & Red Rock	234	265	
Sand & Shale	265	415	
Sand	415	460	½" water @ 385'
Sand & Shale	460	664	
Red Rock	664	672	
Sand & Shale	672	1053	Oil Odor @ 917'
Sand	1053	1137	
Sand & Shale	1137	1851	
Little Lime	1851	1880	
Big Lime	1880	1904	
Big Injun/Squaw	1904	1991	½" oil @ 1943'
Shale	1991	2140	
Weir	2140	2250	
Shale	2250	2341	<u>Gas Checks</u> 1976' – No Show
Berea	2341	2354	TD – 18/10 ^{ths} – 2" water
Shale	2354	2550	
Gordon	2550	2591	
Shale	2591	2840	
TD	2840		

Page 3

DEC 23 2004