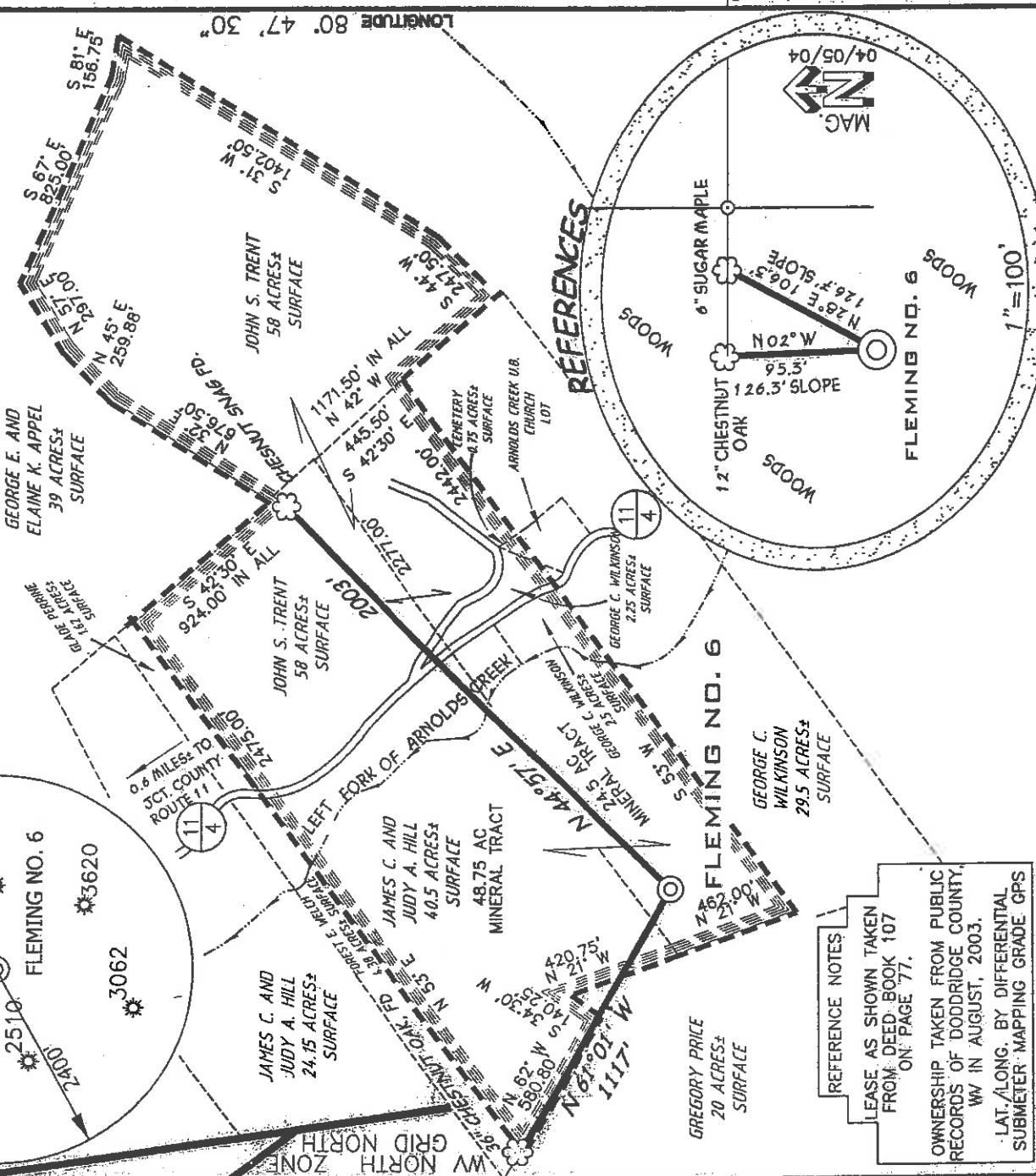


FLEMING LEASE ±
108.75 ACRES ±
WELL NO. 6

PROPOSED WELL STATE PLANE NAD 27 COORDINATES
 NJ 279781
 EJ 1631825



SURVEYED LAT. 39° 15' 39.1" LONGITUDE 80° 47' 30" 11305'

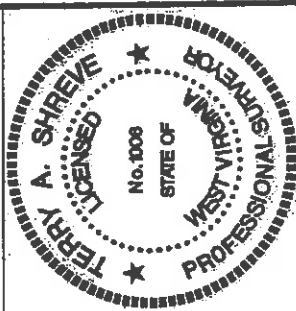
(*) DENOTES LOCATION ON UNITED STATES TOPOGRAPHIC MAPS

REFERENCE NOTES
 LEASE AS SHOWN TAKEN FROM DEED BOOK 107 ON PAGE 77.
 OWNERSHIP TAKEN FROM PUBLIC RECORDS OF DODDRIDGE COUNTY, WV IN AUGUST, 2003.
 LAT./LONG. BY DIFFERENTIAL SUBMETER-MAPPING GRADE GPS

FILE NUMBER 030022
 DRAWING NUMBER WP6(W2-11)
 SCALE 1"=600'
 MINIMUM DEGREE OF ACCURACY 1/200
 PROVEN SOURCE OF ELEVATION JUNCTION OF ROADS ELEVATION 816'

I, THE UNDERSIGNED, HEREBY CERTIFY THAT THIS PLAT IS CORRECT TO THE BEST OF MY KNOWLEDGE AND BELIEF AND SHOWS ALL THE INFORMATION REQUIRED BY LAW AND THE REGULATIONS ISSUED AND PRESCRIBED BY THE DEPARTMENT OF ENVIRONMENTAL PROTECTION

P.S. Terry A. Shreve
 10006



STATE OF WEST VIRGINIA
 DIVISION OF ENVIRONMENTAL PROTECTION
 OFFICE OF OIL AND GAS

WELL TYPE: OIL GAS LIQUID INJECTION WASTE DISPOSAL
 (IF 'GAS') PRODUCTION STORAGE DEEP SHALLOW

LOCATION: ELEVATION 1053' WATERSHED LEFT FORK OF ARNOLDS CREEK
 DISTRICT WEST UNION COUNTY DODDRIDGE

QUADRANGLE WEST UNION 7.5' LEASE NUMBER 40.5 AC±

SURFACE OWNER JAMES C. AND JUDY HILL ACREAGE 40.5 AC±

OIL & GAS ROYALTY OWNER THOMAS J. FLEMING HEIRS LEASE ACREAGE 108.75 AC±

PROPOSED WORK: DRILL CONVERT DRILL DEEPER REDRILL FRACTURE OR STIMULATE PLUG OFF OLD FORMATION
 PERFORMATE NEW FORMATION OTHER PHYSICAL CHANGE (SPECIFY)

TARGET FORMATION GORDON ESTIMATED DEPTH 3000'

WELL OPERATOR KEY OIL COMPANY DESIGNATED AGENT JAN CHAPMAN
 ADDRESS 22 GARTON PLAZA WESTON, WV 26452 ADDRESS 22 GARTON PLAZA WESTON, WV 26452

DATE: APRIL 13, 2004
 OPERATORS WELL NO. FLEMING NO. 6
 API WELL NO. 47-017-04822
 STATE COUNTY PERMIT

COUNTY NAME PERMIT

State of West Virginia
Division of Environmental Protection
Section of Oil and Gas

April 13

Well Operator's Report of Well Work

Farm Name: JAMES C. & JUDY HILL

Operator Well No.: FLEMING #6

LOCATION: Elevation: 4000' 1053'

Quadrangle: WEST UNION

District: WEST UNION
Latitude: 11430 Feet South of 39 Deg. 17 Min. 30 Sec.
Longitude: 2380 Feet West of 80 Deg. 47 Min. 30 Sec.

County: DODDRIDGE

Company: KEY OIL COMPANY
22 GARTON PLAZA
WESTON, WV 26452-0000

Agent: JAN CHAPMAN

Inspector: MIKE UNDERWOOD
Permit Issued: 06/23/04
Well Work Commenced: 10/18/04
Well Work Completed: 10/20/04

Verbal Plugging
Permission granted on: _____ Rig
Rotary X Cable _____ 2743
Total Depth (feet) _____ 42', 290'
Fresh water depths (ft) _____ NONE
Salt water depths (ft) _____

Is coal being mined in area (Y / N)? N
Coal Depths (ft): 19' (3')

OPEN FLOW DATA

Casing & Tubing Size	Used in Drilling	Left in Well	Cement Fill Up Cu. Ft.
8 5/8"	1092'	1092'	240 sks To Surface
4 1/2"	2654'	2654'	250 sks.

Producing formation: Big Injun Gordon
Gas: Initial open flow 60 MCF / d
Final open flow 2,054 MCF / d
Time of open flow between initial and final tests: N/A
Static rock pressure 200 psig (surface pressure) after 96 Hours

1931' - 2004'
2560' - 2606'

Pay zone depth (ft)
Oil: Initial open flow 0 Bbl / d
Oil: Final open flow show Bbl / d

Second producing formation _____
Gas: Initial open flow Commingled MCF / d
Final open flow Commingled MCF / d
Time of open flow between initial and final tests _____
Static rock pressure _____ psig (surface pressure) after _____ Hours

Pay zone depth (ft)
Oil: Initial open flow _____ Bbl / d
Oil: Final open flow _____ Bbl / d

RECEIVED
Office of Oil & Gas
Office of Chief
APR 04 2005
WV Department of
Environmental Protection

NOTE: ON BACK OF THIS FORM PUT THE FOLLOWING: 1). DETAILS OF PERFORATED INTERVALS, FRACTURING OR STIMULATING, PHYSICAL CHANGE, ETC. 2). THE WELL LOG WHICH IS A SYSTEMATIC DETAILED GEOLOGICAL RECORD OF ALL FORMATIONS, INCLUDING COAL ENCOUNTERED BY THE WELLBORE.

For: KEY OIL COMPANY

By: *Jan Chapman*
Date: March 29, 2005

MAY 27 2005
PRESIDENT

D000 4822

Fleming #6 (47-017-4822)

Two Stage Foam Frac – BJ Services

1st Stage: Gordon (15 holes) (2594' to 2600')

60 Quality Foam,
500 gal. 15% HCL., 30,000# 20/40 sand,
250,000 SCF N2, 275 bbis foam

2nd Stage: Big Injun (15 holes) (1846' to 1996')

60 Quality Foam,
750 gal 15% HCl, 25,000# 20/40 sand,
335,000 SCF N2, 310 bbis foam

WELL LOG

KB 0
Clay 10
Shale 15
Coal 19
Sand & Shale 22
Shale & Red Rock 135
Sand & Shale 212
Lime & Shale 232
Sand & Shale & Red Rock 248
Sand & Shale 358
Red Rock 460
Sand & Shale 475
Sand 795
Sand & Shale 822
Red Rock 954
Sand & Shale 983
Sand 1045
Sand & Shale 1075
Little Lime 1810
Big Lime 1847
Big Injun 1931
Shale 2004
Weir 2154
Shale 2268
Berea 2358
Shale 2366
Gordon 2560
Shale 2606
TD 2743

10
15
19
22
135
212
232
248
358
460
475
795
822
954
983
1045
1075
1810
1847
1931
2004
2154
2268
2358
2366
2560
2606
2743

Damp @ 42'

1/2" water @ 290'

Gas Checks
1672' – No Show
2019' - 210^{ths} – 2" water
2522' - 210^{ths} – 2" water

MAY 27 2005