

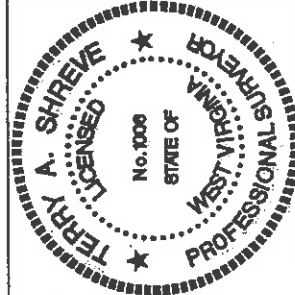
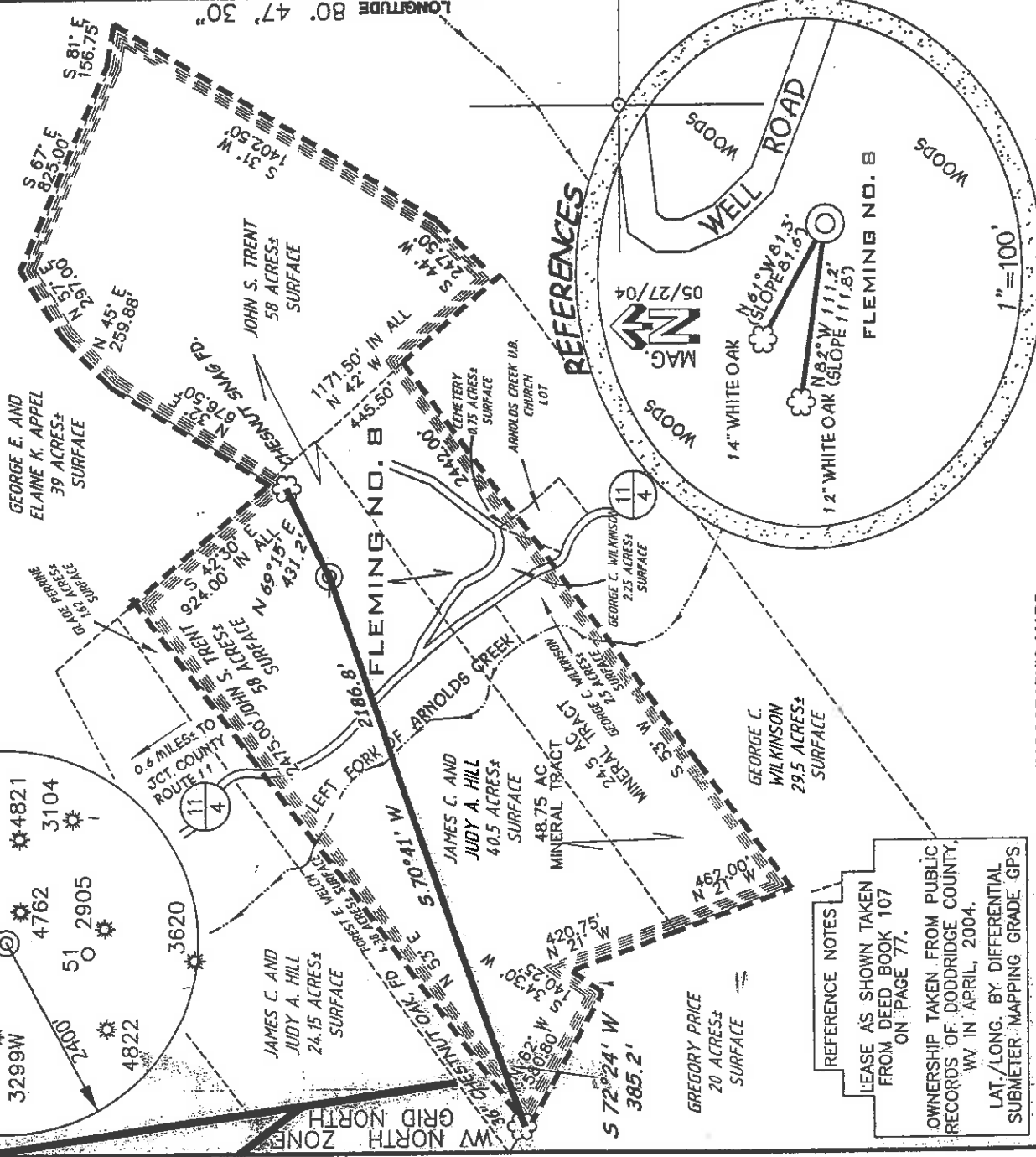
SURVEYED LONG. 80° 47' 30"

LATITUDE 39° 17' 30"

form vw6

FLEMING LEASE ± 108.75 ACRES ± WELL NO. 8

PROPOSED WELL STATE PLANE NAD 87 COORDINATES
N) 281046
E) 1632912



I, THE UNDERSIGNED, HEREBY CERTIFY THAT THIS PLAN IS CORRECT TO THE BEST OF MY KNOWLEDGE AND BELIEF AND SHOWS ALL THE INFORMATION REQUIRED BY LAW AND THE REGULATIONS ISSUED AND PRESCRIBED BY THE DEPARTMENT OF ENVIRONMENTAL PROTECTION

P.S. Terry A. Shreve
1006



STATE OF WEST VIRGINIA
DIVISION OF ENVIRONMENTAL PROTECTION
OFFICE OF OIL AND GAS

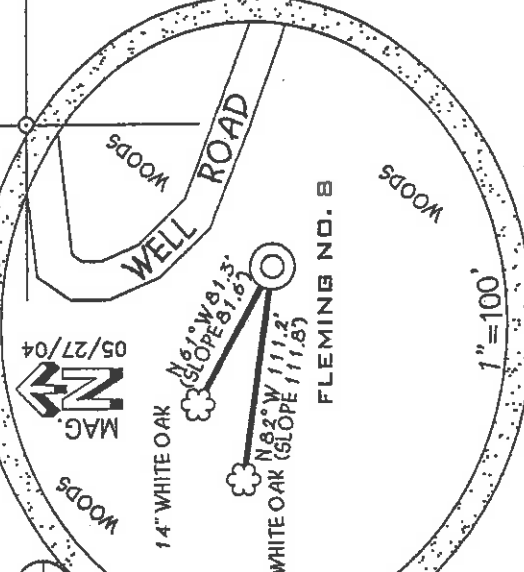
FILE NUMBER 030022
DRAWING NUMBER WP8R(W2-1B)
SCALE 1"=600'
MINIMUM DEGREE OF ACCURACY 1/200
PROVEN SOURCE OF ELEVATION JUNCTION OF ROADS
ELEVATION 816'

DATE MAY 28, 2004
OPERATORS WELL NO. FLEMING NO. 8
API WELL NO. 47-017-04852
STATE COUNTY PERMIT

WELL TYPE: OIL GAS LIQUID INJECTION WASTE DISPOSAL
(IF "GAS") PRODUCTION STORAGE DEEP SHALLOW
LOCATION: ELEVATION 1051' WATERSHED LEFT FORK OF ARNOLDS CREEK
DISTRICT WEST UNION COUNTY DODDRIDGE
QUADRANGLE WEST UNION 7.5' LEASE NUMBER

SURFACE OWNER JOHN S. TRENT ACREAGE 58.0 AC±
OIL & GAS ROYALTY OWNER THOMAS J. FLEMING HEIRS LEASE ACREAGE 108.75 AC±
PROPOSED WORK: DRILL CONVERT DEEPER REDRILL FRACTURE OR STIMULATE PLUG OFF OLD FORMATION
PERFORM NEW FORMATION OTHER PHYSICAL CHANGE (SPECIFY)
TARGET FORMATION GORDON CLEAN OUT & REPLUG
WELL OPERATOR KEY OIL COMPANY DESIGNATED AGENT JAN CHAPMAN ESTIMATED DEPTH 3000'
ADDRESS 22 CARTON PLAZA WESTON, WV 26452 ADDRESS 22 CARTON PLAZA WESTON, WV 26452

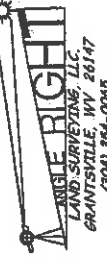
REFERENCES



REFERENCE NOTES
LEASE AS SHOWN TAKEN FROM DEED BOOK 107 ON PAGE 77.

OWNERSHIP TAKEN FROM PUBLIC RECORDS OF DODDRIDGE COUNTY, WV IN APRIL, 2004.
LAT/LONG BY DIFFERENTIAL SUBMETER-MAPPING GRADE GPS

(+) DENOTES LOCATION ON UNITED STATES TOPOGRAPHIC MAPS



0000 4852

JUN 25 2004

6-6 (133)

State of West Virginia
Division of Environmental Protection
Section of Oil and Gas

AP 17

Well Operator's Report of Well Work

Farm Name: JOHN S. TRENT

Operator Well No. : FLEMING #8

LOCATION: Elevation: 1051'

Quadrangle: WEST UNION

District: WEST UNION
Latitude: 10020 Feet South of 39 Deg. 17 Min. 30 Sec.
Longitude: 1370 Feet West of 80 Deg. 47 Min. 30 Sec.

County: DODDRIDGE

Company: KEY OIL COMPANY
22 GARTON PLAZA
WESTON, WV 26452-0000

Agent: JAN CHAPMAN

Inspector: MIKE UNDERWOOD
Permit Issued: 04/27/04
Well Work Commenced: 10/04/04
Well Work Completed: 10/07/04

Verbal Plugging
Permission granted on: _____ Rig
Rotary X Cable _____ 2707'
Total Depth (feet) _____
Fresh water depths (ft) _____ 451'
Salt water depths (ft) _____ NONE

Is coal being mined in area (Y / N)? N
Coal Depths (ft) : 27' (2), 230' (3)

OPEN FLOW DATA

| | | | |
|---|---------------------------------|---|---------------|
| Producing formation | Gordon | Big Lime | 1852' - 1869' |
| Gas: Initial open flow | Odor _____ MCF / d | Big Injun | 1913' - 1996' |
| Final open flow | 2,144 MCF / d | | 2538' - 2597' |
| Time of open flow between initial and final tests | N/A | Pay zone depth (ft) | 0 Bbl / d |
| Static rock pressure | 360 psig (surface pressure) | Oil: Initial open flow | _____ Bbl / d |
| | | Oil: Final open flow | _____ Bbl / d |
| | | Time of open flow between initial and final tests | _____ Hours |
| | | Static rock pressure after | _____ Hours |
| Second producing formation | _____ | Pay zone depth (ft) | _____ |
| Gas: Initial open flow | Commingled _____ MCF / d | Oil: Initial open flow | _____ Bbl / d |
| Final open flow | Commingled _____ MCF / d | Oil: Final open flow | _____ Bbl / d |
| Time of open flow between initial and final tests | _____ | Time of open flow between initial and final tests | _____ Hours |
| Static rock pressure | _____ psig (surface pressure) | Static rock pressure after | _____ Hours |

RECEIVED
Office of Oil & Gas
Office of Chief
APR 18 2005
WV Department of
Environmental Protection

NOTE: ON BACK OF THIS FORM PUT THE FOLLOWING: 1). DETAILS OF PERFORATED INTERVALS, FRACTURING OR STIMULATING, PHYSICAL CHANGE, ETC. 2). THE WELL LOG WHICH IS A SYSTEMATIC DETAILED GEOLOGICAL RECORD OF ALL FORMATIONS, INCLUDING COAL ENCOUNTERED BY THE WELLBORE.

For: KEY OIL COMPANY

By: *Jan Chapman*
Date: April 18, 2005

PRESIDENT

MAY 27 2005

0000 4852

Fleming #8 (47-017-4852)
Three Stage Foam Frac – Universal Well Services

| | | |
|------------------------|---|---|
| 1 st Stage: | Gordon (15 holes) (2583' to 2649') | 60 Quality Foam, 500 gal. 15% HCL., 30,000# 20/40 sand, 275,000 SCF N2, 310 bbls foam |
| 2 nd Stage: | Big Injun (15 holes) (1960' to 1992') | 60 Quality Foam, 500 gal 15% HCl, 30,000# 20/40 sand, 245,000 SCF N2, 325 bbls foam |
| 3 rd Stage: | Big Lime (15 holes) (1856' to 1862') | 60 Quality Foam, 500 gal 15% HCl, 25,000# 20/40 sand, 195,000 SCF N2, 215 bbls foam |

WELL LOG

| | | | |
|------------------|------|------|--|
| KB | 0 | 10 | |
| Fill | 10 | 12 | |
| Sand & Shale | 12 | 27 | |
| Coal | 27 | 29 | |
| Sand | 29 | 80 | |
| Shale & Red Rock | 80 | 230 | |
| Coal | 230 | 233 | |
| Sand & Shale | 233 | 297 | |
| Red Rock | 297 | 317 | |
| Sand & Shale | 317 | 333 | |
| Red Rock | 333 | 341 | |
| Sand & Shale | 341 | 641 | |
| Red Rock | 641 | 694 | |
| Red Rock | 694 | 854 | |
| Sand & Shale | 854 | 904 | |
| Red Rock | 904 | 1065 | |
| Sand & Shale | 1065 | 1145 | |
| Sand | 1145 | 1291 | |
| Sand & Shale | 1291 | 1377 | |
| Sand | 1377 | 1812 | |
| Sand & Shale | 1812 | 1850 | |
| Little Lime | 1850 | 1913 | |
| Big Lime | 1913 | 1996 | |
| Big Injun | 1996 | 2145 | |
| Shale | 2145 | 2256 | |
| Weir | 2256 | 2348 | |
| Shale | 2348 | 2359 | |
| Berea | 2359 | 2538 | |
| Shales | 2538 | 2597 | |
| Gordon | 2597 | 2707 | |
| Shale | 2707 | | |
| TD | | | |

Damp @ 451'

Oil Odor @ 1320'

Gas Checks
1764' – No Show
TD - Odor

MAY 27 2005