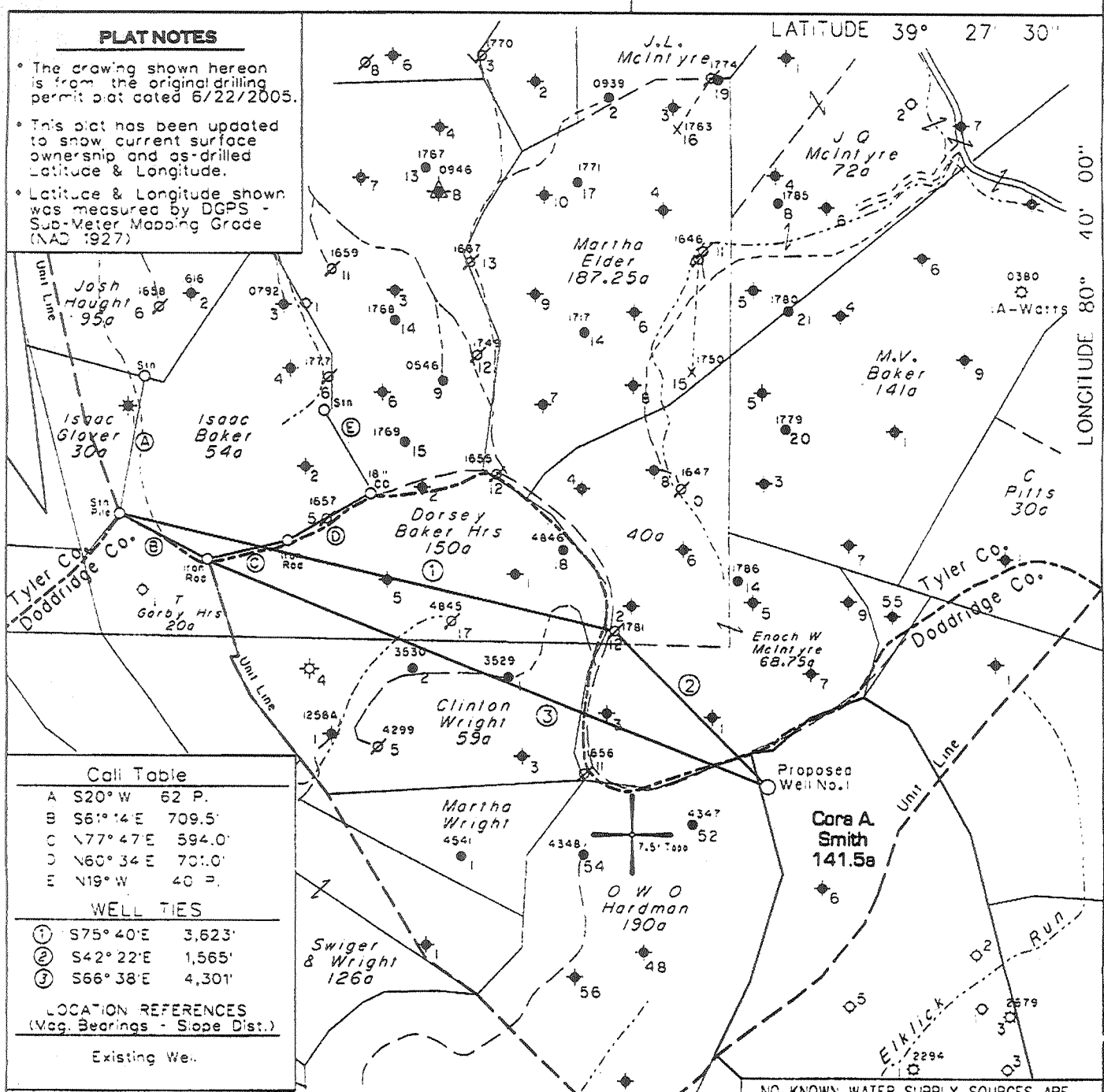


PLAT NOTES

- The drawing shown hereon is from the original drilling permit plat dated 6/22/2005.
- This plat has been updated to show current surface ownership and as-drilled Latitude & Longitude.
- Latitude & Longitude shown was measured by DGPS - Sub-Meter Mapping Grade (NAD 1927)



Call Table

- A S20° W 62 P.
- B S61° 14 E 709.5'
- C N77° 47 E 594.0'
- D N60° 34 E 701.0'
- E N19° W 40 P.

WELL TIES

- ① S75° 40'E 3,623'
- ② S42° 22'E 1,565'
- ③ S66° 38'E 4,301'

LOCATION REFERENCES
(Mag. Bearings - Slope Dist.)

Existing Well

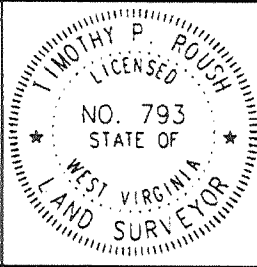
(↔) DENOTES LOCATION OF WELL ON UNITED STATES TOPOGRAPHIC MAPS

NO KNOWN WATER SUPPLY SOURCES ARE LOCATED WITHIN 1000' OF PROPOSED WELL

FILE NO. 1040-24
 MAP NO. N47 N S 1 E W 4
 SCALE 1" = 1000'
 MINIMUM DEGREE OF ACCURACY Sub-Meter
 PROVEN SOURCE OF ELEVATION WVDEP Records

I THE UNDERSIGNED, HEREBY CERTIFY THAT THIS PLAT IS CORRECT TO THE BEST OF MY KNOWLEDGE AND BELIEF AND SHOWS ALL THE INFORMATION REQUIRED BY LAW AND THE REGULATIONS ISSUED AND PRESCRIBED BY THE DEPARTMENT OF MINES.

(SIGNED) *Timothy P. Roush*
 TIMOTHY P. ROUSH PS 793



WEST VIRGINIA
 Division of Environmental Protection
 Office of Oil and Gas
 601 57th Street
 Charleston, West Virginia 25304



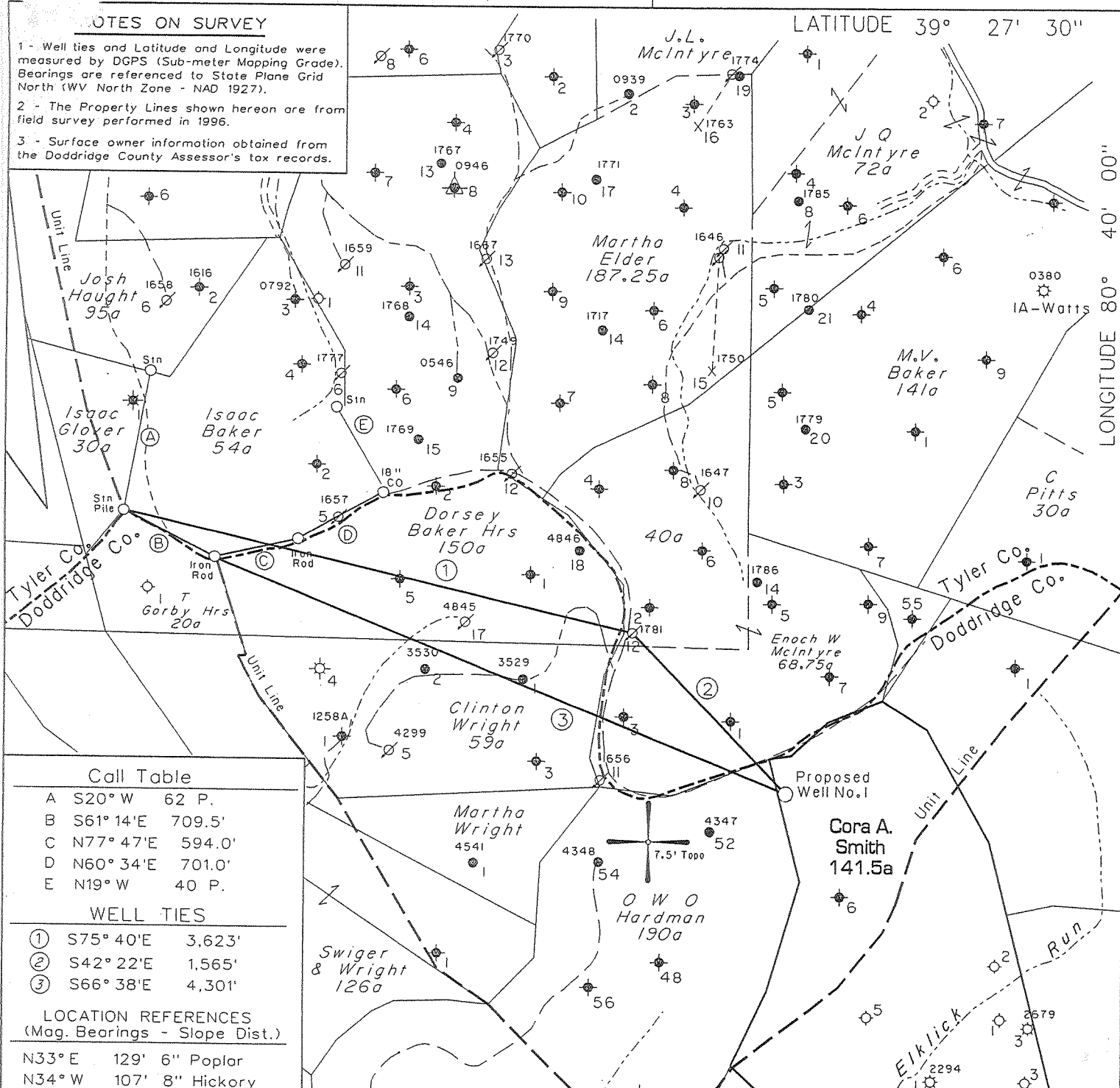
DATE December 23, 2009
 FARM C.A. Smith NO. 1
 API WELL NO. 47-017-05040

WELL TYPE: OIL ___ GAS ___ LIQUID INJECTION WASTE DISPOSAL ___
 (IF "GAS") PRODUCTION ___ STORAGE ___ DEEP ___ SHALLOW ___
 LOCATION: ELEVATION 1,307' WATERSHED Eiklick Run
 DISTRICT McClellan COUNTY Doddridge
 QUADRANGLE Centerpoint 7.5'
 SURFACE OWNER Roy R. Ferrebee ACREAGE 141.5 Ac.
 OIL & GAS ROYALTY OWNER Roy R. Ferrebee LEASE ACREAGE 141 Ac.
 LEASE NO. 99139-00
 PROPOSED WORK: DRILL ___ CONVERT ___ DRILL DEEPER ___ REDRILL ___ FRACTURE OR STIMULATE PLUG OFF OLD FORMATION ___ PERFORATE NEW FORMATION ___ OTHER PHYSICAL CHANGE IN WELL (SPECIFY) ___
 PLUG AND ABANDON ___ CLEAN OUT AND REPLUG ___
 TARGET FORMATION Gordon ESTIMATED DEPTH 3,350'
 WELL OPERATOR East Resources, Inc. DESIGNATED AGENT Philip S. Ondrusek
 ADDRESS P. O. Box 5519 ADDRESS P. O. Box 5519
 Vienna, W.Va. 26105 Vienna, W.Va. 26105

FORM IV-6

NOTES ON SURVEY

- 1 - Well ties and Latitude and Longitude were measured by DGPS (Sub-meter Mapping Grade). Bearings are referenced to State Plane Grid North (WV North Zone - NAD 1927).
- 2 - The Property Lines shown hereon are from field survey performed in 1996.
- 3 - Surface owner information obtained from the Doddridge County Assessor's tax records.



Call Table

- A S20° W 62 P.
- B S61° 14'E 709.5'
- C N77° 47'E 594.0'
- D N60° 34'E 701.0'
- E N19° W 40 P.

WELL TIES

- ① S75° 40'E 3,623'
- ② S42° 22'E 1,565'
- ③ S66° 38'E 4,301'

LOCATION REFERENCES (Mag. Bearings - Slope Dist.)

- N33° E 129' 6" Poplar
- N34° W 107' 8" Hickory

(+) DENOTES LOCATION OF WELL ON UNITED STATES TOPOGRAPHIC MAPS

NO KNOWN WATER SUPPLY SOURCES ARE LOCATED WITHIN 1000' OF PROPOSED WELL

FILE NO. 1040-24

MAP NO. N47 N S1 E W4

SCALE 1" = 1000'

MINIMUM DEGREE OF ACCURACY Sub-Meter

PROVEN SOURCE OF ELEVATION DGPS Survey (Post - Processed Sub-Meter Mapping Grade)

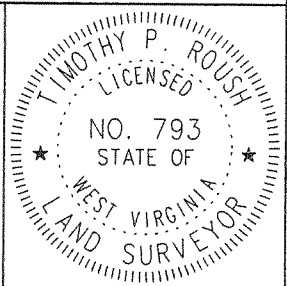
I THE UNDERSIGNED, HEREBY CERTIFY THAT THIS PLAT IS CORRECT TO THE BEST OF MY KNOWLEDGE AND BELIEF AND SHOWS ALL THE INFORMATION REQUIRED BY LAW AND THE REGULATIONS ISSUED AND PRESCRIBED BY THE DEPARTMENT OF MINES

(SIGNED)

[Signature]

TIMOTHY P. ROUSH

PS 793



WEST VIRGINIA

Division of Environmental Protection
Office of Oil and Gas
601 57th Street
Charleston, West Virginia 25304



DATE June 22, 2005

FARM C.A. Smith NO. 1

API WELL NO.

47-017-050405

WELL TYPE: OIL ___ GAS ___ LIQUID INJECTION WASTE DISPOSAL ___
(IF "GAS") PRODUCTION ___ STORAGE ___ DEEP ___ SHALLOW ___

LOCATION: ELEVATION 1,307' WATERSHED Ellick Run

DISTRICT McClellan COUNTY Doddridge

QUADRANGLE Centerpoint 7.5'

SURFACE OWNER Roy R. Ferrebee ACREAGE 141.5 Ac.

OIL & GAS ROYALTY OWNER Roy R. Ferrebee LEASE ACREAGE 141 Ac.

LEASE NO. 99139-00

PROPOSED WORK: DRILL CONVERT ___ DRILL DEEPER ___ REDRILL ___ FRACTURE OR STIMULATE PLUG OFF OLD FORMATION ___ PERFORATE NEW FORMATION ___ OTHER PHYSICAL CHANGE IN WELL (SPECIFY) ___

PLUG AND ABANDON ___ CLEAN OUT AND REPLUG ___

TARGET FORMATION Gordon ESTIMATED DEPTH 3,350'

WELL OPERATOR East Resources, Inc.

DESIGNATED AGENT Philip S. Ondrusek

ADDRESS P. O. Box 5519

ADDRESS P. O. Box 5519

Vienna, W.Va. 26105

Vienna, W.Va. 26105

JUL 15 2005

11,725'

Latitude - 39° 25' 34.0"

50105 000

State of West Virginia
Division of Environmental Protection
Section of Oil and Gas

Well Operator's Report of Well Work

Farm name: ROY R. FERREBEE

Operator Well No.: C.A. SMITH 1

LOCATION: Elevation: 1,307.00

Quadrangle: CENTERPOINT 7.5'

District: MCCLELLAN

County: DODDRIDGE

Latitude: 11,725 Feet south of 39 Deg 27 Min 30 Sec.

Longitude: 6,625 Feet west of 80 Deg 40 Min 00 Sec.

Company: EAST RESOURCES, INC.
P.O. BOX 5519
VIENNA, WV 26105-5519

Agent: PHILIP S. ONDRUSEK

Inspector: MIKE UNDERWOOD

Permit Issued: 07/13/05

Well work Commenced: 10/05/05

Well work Completed: 10/18/05

Verbal plugging permission granted on:

Rotary X Cable Rig

Total Depth (feet) 3350

Fresh water depths (ft)

Salt water depths (ft) 2644

Is coal being mined in area (Y/N) N

Coal Depths (ft): NA

Casing & Tubing Size	Used in Drilling	Left in Well	Cement Fill Up Cu. Ft.
7"	633.00'	633.00'	155 sks
4 1/2"	3279.20'	3279.20'	150 sks

OPEN FLOW DATA

WATER INJECTION WELL

Producing formation Gordon Pay zone depth (ft) 3177-3190
 Gas: Initial open flow * MCF/d Oil: Initial open flow * Bbl/d
 Final open flow * MCF/d Final open flow * Bbl/d
 Time of open flow between initial and final tests Hours
 Static rock pressure psig (surface pressure) after Hours

Second producing formation Pay zone depth (ft)
 Gas: Initial open flow MCF/d Oil: Initial open flow Bbl/d
 Final open flow MCF/d Final open flow Bbl/d
 Time of open flow between initial and final tests Hours
 Static rock pressure psig (surface pressure) after Hours

NOTE: ON BACK OF THIS FORM, PUT THE FOLLOWING: 1) DETAILS OF PERFORATED INTERVALS, FRA OR STIMULATING, PHYSICAL CHANGE, ETC. 2) THE WELL LOG WHICH IS A SYSTEMATIC DETAILED GEOLOGICAL RECORD OF ALL FORMATIONS, INCLUDING COAL ENCOUNTERED BY THE WELLBORE.

For: EAST RESOURCES, INC.

By: [Signature]

Date: 10/26/05

RECEIVED
Office of Oil & Gas
Office of Chief
OCT 27 2005
WV Department of Environmental Protection

JAN 20 2006

0000 5040

Treatment :

Perforated 3177-3190 4 holes per ft.(55 holes). Treated perms via 4 1/2 casing w/500 gallons 15% HCl
355bbls cross linked gel & 20,200 lbs of 20/40 sand.

Well Log :

0	252	Sand and Shale
252	280	Sand
280	603	Shale
603	632	sand
632	856	Shale
856	866	sand
866	1240	Shale
1240	1272	sand
1272	1638	Shale
1638	1676	sand
1676	1748	Shale
1748	1766	sand
1766	2102	Shale
2102	2124	sand
2124	2318	Shale
2318	2398	Big Lime
2398	2585	Big Injun
2585	3156	Shale
3156	3175	Gordon Stray
3175	3192	Gordon
3192	3350	Shale
3350		TD

State of West Virginia
Division of Environmental Protection
Section of Oil and Gas

Well Operator's Report of Well Work

COPY

Farm name: FERREBEE, ROY R.

Operator Well No.: C.A. SMITH 1

LOCATION: Elevation: 1,307'

Quadrangle: CENTERPOINT 7.5'

District: MCCLELLAN
Latitude: 11,725 Feet south of
Longitude: 6,625 Feet west of

County: DODDRIDGE
39 Deg 27 Min 30 Sec.
80 Deg 40 Min 0 Sec.

Company: EAST RESOURCES, INC.
P.O. BOX 5519
VIENNA, WV 26105-5519

Agent: PHILIP S. ONDRUSEK

Inspector: DAVID SCRANAGE

Permit Issued: 01/21/10

Well work Commenced: 03/31/10

Well work Completed: 04/01/10

Verbal plugging permission granted on:

Rotary X Cable Rig

Total Depth (feet) 3350'

Fresh water depths (ft) NA

Salt water depths (ft) NA

Is coal being mined in area (Y/N) N

Coal Depths (ft): NA

Casing Tubing Size	Used in Drilling	Left in Well	Cement Fill Up Cu. Ft.
7"	633'	633'	155 sks
4 1/2"	3279.2'	3279.2'	150 sks

OPEN FLOW DATA * WATERFLOOD INJECTOR

Producing formation Gordon Pay zone depth (ft) 3177'-3190', 3204'-3207'

Gas: Initial open flow * MCF/d Oil: Initial open flow * Bbl/d

Final open flow * MCF/d Final open flow * Bbl/d

Time of open flow between initial and final tests Hours

Static rock pressure psig (surface pressure) after Hours

Second producing formation Pay zone depth (ft)

Gas: Initial open flow MCF/d Oil: Initial open flow Bbl/d

Final open flow MCF/d Final open flow Bbl/d

Time of open flow between initial and final tests Hours

Static rock pressure psig (surface pressure) after Hours

NOTE: ON BACK OF THIS FORM, PUT THE FOLLOWING: 1) DETAILS OF PERFORATED INTERVALS, FRACTURING OR STIMULATING, PHYSICAL CHANGE, ETC. 2) THE WELL LOG WHICH IS A SYSTEMATIC DETAILED GEOLOGICAL RECORD OF ALL FORMATIONS, INCLUDING COAL ENCOUNTERED BY THE WELLBORE.

RECEIVED

Office of Oil & Gas

AUG 08 2011

For: EAST RESOURCES, INC.

By: [Signature]

Date: 5/12/10

WV Department of Environmental Protection

Treatment: Treated perms. 3177'-3207' w/ 250 gals. 15% HCl acid,
390 bbls cross linked gel, and 25,000 # 20/40 sand.

Well Log: SEE ORIGINAL WELL RECORD

RECEIVED
Office of Oil & Gas

AUG 08 2011

WV Department of
Environmental Protection

08/12/2011