

17.05951

PHOENIX
TECHNOLOGY SERVICES



EQT Production - Marcellus

Doddridge County, WV Grid

Doddridge County 513136

Well #513136

Well #513136

Design: As Drilled Surveys

Standard Survey Report

01 December, 2014



10/16/2015

Database:	EDM 5000.1 Single User Db	Local Co-ordinate Reference:	Site Doddridge County 513136
Company:	EQT Production - Marcellus	TVD Reference:	KB@23ft @ 1263.0usft
Project:	Doddridge County, WV Grid	MD Reference:	KB@23ft @ 1263.0usft
Site:	Doddridge County 513136	North Reference:	Grid
Well:	Well #513136	Survey Calculation Method:	Minimum Curvature
Wellbore:	Well #513136		
Design:	As Drilled Surveys		

Project	Doddridge County, WV Grid		
Map System:	US State Plane 1927 (Exact solution)	System Datum:	Mean Sea Level
Geo Datum:	NAD 1927 (NADCON CONUS)		
Map Zone:	West Virginia North 4701		Using geodetic scale factor

Site	Doddridge County 513136				
Site Position:		Northing:	265,377.90 usft	Latitude:	39.22
From:	Map	Easting:	1,631,462.00 usft	Longitude:	-80.80
Position Uncertainty:	0.0 usft	Slot Radius:	13-3/16 "	Grid Convergence:	-0.83 °

Well	Well #513136					
Well Position	+N/-S	0.0 usft	Northing:	265,377.90 usft	Latitude:	39° 13' 16.655 N
	+E/-W	0.0 usft	Easting:	1,631,462.00 usft	Longitude:	80° 48' 3.035 W
Position Uncertainty		0.0 usft	Wellhead Elevation:	usft	Ground Level:	1,240.0 usft

Wellbore	Well #513136				
-----------------	--------------	--	--	--	--

Magnetics	Model Name	Sample Date	Declination (°)	Dip Angle (°)	Field Strength (nT)
	IGRF2010_14	11/17/2014	-8.46	66.72	52,209

Design	As Drilled Surveys				
---------------	--------------------	--	--	--	--

Audit Notes:

Version:	1.0	Phase:	ACTUAL	Tie On Depth:	0.0
-----------------	-----	---------------	--------	----------------------	-----

Vertical Section:	Depth From (TVD) (usft)	+N/-S (usft)	+E/-W (usft)	Direction (°)
	0.0	0.0	0.0	140.04

Survey Program		Date			
From (')	To (usft)	12/1/2014	Survey (Wellbore)	Tool Name	Description
0.00	5,163.0	513136	Gyrodata Gyro (Well #513136)	GYD_DP_MS	Gyrodata gyro-compassing and drop
0.00	5,799.0	513136	Pro D Surveys (Well #513136)	MWD	MWD - Standard
0.00	10,425.0	513136	PHX MWD (Well #513136)	MWD+IGRF	MWD+IGRF v3:standard declination

Measured Depth (usft)	Inclination (°)	Azimuth (°)	Vertical Depth (usft)	Subsea Depth (usft)	+N/-S (usft)	+E/-W (usft)	Vertical Section (usft)	Dogleg Rate (°/100usft)	Build Rate (°/100usft)	Turn Rate (°/100usft)
0.0	0.00	0.00	0.0	-1,263.0	0.0	0.0	0.0	0.00	0.00	0.00
110.0	0.45	288.28	110.0	-1,153.0	0.1	-0.4	-0.4	0.41	0.41	0.00
210.0	0.42	286.93	210.0	-1,053.0	0.4	-1.1	-1.0	0.03	-0.03	-1.35
310.0	0.17	273.49	310.0	-953.0	0.5	-1.6	-1.4	0.26	0.25	-13.4
410.0	0.12	293.31	410.0	-853.0	0.5	-1.9	-1.6	0.07	-0.05	19.62
510.0	0.03	91.07	510.0	-753.0	0.6	-1.9	-1.7	0.15	-0.09	157.76
610.0	0.12	143.48	610.0	-653.0	0.5	-1.9	-1.6	0.10	0.09	52.41

Received
Office of Oil & Gas
JUL 29 2015

Database:	EDM 5000.1 Single User Db	Local Co-ordinate Reference:	Site Doddridge County 513136
Company:	EQT Production - Marcellus	TVD Reference:	KB@23ft @ 1263.0usft
Project:	Doddridge County, WV Grid	MD Reference:	KB@23ft @ 1263.0usft
Site:	Doddridge County 513136	North Reference:	Grd
Well:	Well #513136	Survey Calculation Method:	Minimum Curvature
Wellbore:	Well #513136		
Design:	As Drilled Surveys		

Survey											
Measured Depth (usft)	Inclination (°)	Azimuth (°)	Vertical Depth (usft)	Subsea Depth (usft)	+N/-S (usft)	+E/-W (usft)	Vertical Section (usft)	Dogleg Rate (°/100usft)	Build Rate (°/100usft)	Turn Rate (°/100usft)	
710.0	0.32	165.88	710.0	-553.0	0.1	-1.7	-1.2	0.21	0.20	22.40	
810.0	0.23	202.80	810.0	-453.0	-0.3	-1.7	-0.9	0.19	-0.09	36.92	
910.0	0.19	234.83	910.0	-353.0	-0.6	-2.0	-0.8	0.12	-0.04	32.03	
1,010.0	0.17	21.35	1,010.0	-253.0	-0.6	-2.0	-0.9	0.34	-0.02	146.52	
1,110.0	0.30	29.78	1,110.0	-153.0	-0.2	-1.8	-1.0	0.13	0.13	8.43	
1,210.0	0.28	37.30	1,210.0	-53.0	0.2	-1.6	-1.2	0.04	-0.02	7.52	
1,310.0	0.29	18.69	1,310.0	47.0	0.7	-1.3	-1.4	0.09	0.01	-18.61	
1,410.0	0.31	12.74	1,410.0	147.0	1.2	-1.2	-1.7	0.04	0.02	-5.95	
1,510.0	0.29	8.49	1,510.0	247.0	1.7	-1.1	-2.0	0.03	-0.02	-4.25	
1,610.0	0.32	41.53	1,610.0	347.0	2.1	-0.9	-2.2	0.18	0.03	33.04	
1,710.0	0.47	58.50	1,710.0	447.0	2.6	-0.3	-2.2	0.19	0.15	16.97	
1,810.0	0.64	65.67	1,810.0	547.0	3.0	0.5	-2.0	0.18	0.17	7.17	
1,910.0	0.70	66.88	1,910.0	647.0	3.5	1.6	-1.6	0.06	0.06	1.21	
2,010.0	0.60	77.10	2,010.0	747.0	3.8	2.7	-1.2	0.15	-0.10	10.22	
2,110.0	0.49	88.64	2,110.0	847.0	4.0	3.6	-0.7	0.15	-0.11	11.54	
2,210.0	0.51	95.40	2,210.0	947.0	3.9	4.5	-0.1	0.06	0.02	6.76	
2,310.0	0.46	102.76	2,310.0	1,047.0	3.8	5.3	0.5	0.08	-0.05	7.36	
2,410.0	0.36	105.71	2,409.9	1,146.9	3.6	6.0	1.1	0.10	-0.10	2.95	
2,510.0	0.37	99.25	2,509.9	1,246.9	3.5	6.6	1.6	0.04	0.01	-6.46	
2,610.0	0.34	97.88	2,609.9	1,346.9	3.4	7.2	2.0	0.03	-0.03	-1.37	
2,710.0	0.30	82.99	2,709.9	1,446.9	3.4	7.8	2.4	0.09	-0.04	-14.89	
2,810.0	0.29	94.06	2,809.9	1,546.9	3.4	8.3	2.7	0.06	-0.01	11.07	
2,910.0	0.34	83.78	2,909.9	1,646.9	3.4	8.8	3.1	0.08	0.05	-10.28	
3,010.0	0.40	83.74	3,009.9	1,746.9	3.5	9.5	3.4	0.06	0.06	-0.04	
3,110.0	0.41	99.49	3,109.9	1,846.9	3.5	10.2	3.9	0.11	0.01	15.75	
3,210.0	0.52	110.33	3,209.9	1,946.9	3.2	11.0	4.6	0.14	0.11	10.84	
3,310.0	0.58	109.58	3,309.9	2,046.9	2.9	11.9	5.4	0.06	0.06	-0.75	
3,410.0	0.54	109.36	3,409.9	2,146.9	2.6	12.8	6.2	0.04	-0.04	-0.22	
3,510.0	0.45	110.27	3,509.9	2,246.9	2.3	13.6	7.0	0.09	-0.09	0.91	
3,610.0	0.44	108.89	3,609.9	2,346.9	2.0	14.3	7.6	0.01	-0.01	-1.38	
3,710.0	0.44	103.16	3,709.9	2,446.9	1.8	15.1	8.3	0.04	0.00	-5.73	
3,810.0	0.37	95.80	3,809.9	2,546.9	1.7	15.8	8.8	0.09	-0.07	-7.36	
3,910.0	0.46	347.85	3,909.9	2,646.9	2.1	16.0	8.7	0.67	0.09	-107.95	
4,010.0	0.44	283.87	4,009.9	2,746.9	2.6	15.5	8.0	0.48	-0.02	-63.98	
4,110.0	0.65	275.20	4,109.9	2,846.9	2.7	14.6	7.3	0.23	0.21	-8.67	
4,210.0	1.26	280.15	4,209.9	2,946.9	2.9	13.0	6.1	0.61	0.61	4.95	
4,310.0	1.56	282.38	4,309.9	3,046.9	3.4	10.5	4.1	0.30	0.30	2.23	
4,410.0	1.46	287.62	4,409.8	3,146.8	4.1	8.0	2.0	0.17	-0.10	6.24	
4,510.0	1.55	289.84	4,509.8	3,246.8	4.9	5.5	-0.3	0.11	0.09	2.22	
4,610.0	1.62	294.23	4,609.8	3,346.8	6.0	3.0	-2.7	0.14	0.07	4.39	
4,710.0	1.61	305.60	4,709.7	3,446.7	7.4	0.5	-5.3	0.32	-0.01	1.37	
4,810.0	1.53	307.31	4,809.7	3,546.7	9.0	-1.7	-8.0	0.09	-0.08	1.71	
4,910.0	1.36	310.66	4,909.6	3,646.6	10.6	-3.6	-10.5	0.19	-0.17	3.35	

Received
Office of Oil & Gas
JUL 29 2015



17-05951

Phoenix Survey Report



Database:	EDM 5000.1 Single User Db	Local Co-ordinate Reference:	Site Doddridge County 513136
Company:	EQT Production - Marcellus	TVD Reference:	KB@23ft @ 1263 0usft
Project:	Doddridge County, WV Grid	MD Reference:	KB@23ft @ 1263 0usft
Site:	Doddridge County 513136	North Reference:	Grid
Well:	Well #513136	Survey Calculation Method:	Minimum Curvature
Wellbore:	Well #513136		
Design:	As Drilled Surveys		

Survey											
Measured Depth (usft)	Inclination (°)	Azimuth (°)	Vertical Depth (usft)	Subsea Depth (usft)	+N/-S (usft)	+E/-W (usft)	Vertical Section (usft)	Dogleg Rate (°/100usft)	Build Rate (°/100usft)	Turn Rate (°/100usft)	
5,010.0	1.15	308.13	5,009.6	3,746.6	12.0	-5.3	-12.6	0.22	-0.21	-2.53	
5,110.0	1.00	310.33	5,109.6	3,846.6	13.2	-6.8	-14.5	0.16	-0.15	2.20	
Gyro Tie In=5163' MD											
5,163.0	1.07	301.48	5,162.6	3,899.6	13.7	-7.6	-15.4	0.33	0.13	-16.70	
5,196.0	1.10	293.48	5,195.6	3,932.6	14.0	-8.1	-16.0	0.47	0.09	-24.24	
5,239.0	1.28	298.68	5,238.6	3,975.6	14.4	-8.9	-16.8	0.49	0.42	12.09	
5,282.0	2.30	25.29	5,281.6	4,018.6	15.4	-9.0	-17.6	5.97	2.37	201.42	
5,325.0	7.29	36.66	5,324.4	4,061.4	18.4	-7.0	-18.6	11.76	11.60	26.44	
5,368.0	12.59	27.58	5,366.7	4,103.7	24.7	-3.2	-21.0	12.82	12.33	-21.12	
5,411.0	17.19	21.06	5,408.3	4,145.3	34.8	1.3	-25.9	11.37	10.70	-15.16	
5,454.0	19.40	17.27	5,449.1	4,186.1	47.6	5.7	-32.8	5.83	5.14	-8.81	
5,497.0	21.70	17.18	5,489.4	4,226.4	62.0	10.2	-41.0	5.35	5.35	-0.21	
5,540.0	25.10	19.25	5,528.8	4,265.8	78.2	15.5	-50.0	8.13	7.91	4.81	
5,584.0	29.70	20.18	5,567.9	4,304.9	97.3	22.4	-60.2	10.50	10.45	2.11	
5,627.0	33.89	22.29	5,604.4	4,341.4	118.4	30.6	-71.1	10.08	9.74	4.91	
5,670.0	36.28	25.77	5,639.6	4,376.6	140.9	40.7	-81.9	7.25	5.56	8.09	
5,713.0	36.72	32.87	5,674.2	4,411.2	163.2	53.2	-90.9	9.87	1.02	16.51	
5,756.0	35.62	40.67	5,708.9	4,445.9	183.5	68.3	-96.8	11.00	-2.56	18.14	
Final Pro D Survey=5799' MD											
5,799.0	35.40	47.67	5,743.9	4,480.9	201.4	85.7	-99.3	9.47	-0.51	16.28	
First Phoenix MWD Survey=5824' MD/ 5764' TVD											
5,824.0	36.00	50.70	5,764.2	4,501.2	210.9	96.7	-99.5	7.47	2.40	12.12	
5,850.0	37.80	52.70	5,785.0	4,522.0	220.6	109.0	-99.1	8.32	6.92	7.69	
5,882.0	39.70	54.70	5,810.0	4,547.0	232.4	125.1	-97.8	7.11	5.94	6.25	
5,913.0	40.80	58.20	5,833.7	4,570.7	243.5	141.8	-95.5	8.11	3.55	11.29	
5,944.0	41.50	61.60	5,857.0	4,594.0	253.7	159.5	-92.0	7.56	2.26	10.97	
5,976.0	42.60	65.50	5,880.8	4,617.8	263.2	178.7	-87.0	8.86	3.44	12.19	
6,007.0	44.00	67.70	5,903.3	4,640.3	271.7	198.2	-81.0	6.64	4.52	7.10	
6,038.0	45.00	70.40	5,925.4	4,662.4	279.4	218.5	-73.9	6.90	3.23	8.71	
6,070.0	45.80	73.80	5,947.9	4,684.9	286.4	240.1	-65.3	7.97	2.50	10.63	
6,102.0	45.60	77.60	5,970.3	4,707.3	292.1	262.3	-55.4	8.52	-0.63	11.88	
6,133.0	45.30	78.80	5,992.0	4,729.0	296.6	283.9	-45.0	2.92	-0.97	3.87	
6,165.0	44.90	78.30	6,014.6	4,751.6	301.1	306.2	-34.2	1.67	-1.25	-1.56	
6,227.0	42.20	81.20	6,059.5	4,796.5	308.7	348.2	-13.0	5.42	-4.35	4.68	
6,322.0	41.80	80.40	6,130.1	4,867.1	318.9	410.9	19.5	0.70	-0.42	-0.84	
6,416.0	41.10	79.40	6,200.6	4,937.6	329.8	472.2	50.5	1.02	-0.74	-1.06	
6,479.0	42.20	79.70	6,247.7	4,984.7	337.4	513.4	71.1	1.77	1.75	0.48	
6,511.0	42.50	80.20	6,271.3	5,008.3	341.2	534.6	81.9	1.41	0.94	1.55	
6,542.0	42.90	83.80	6,294.1	5,031.1	344.1	555.4	93.0	7.98	1.29	15.66	
6,574.0	43.90	88.70	6,317.4	5,054.4	345.5	577.3	106.0	10.97	3.13	15.31	
6,606.0	45.00	92.40	6,340.2	5,077.2	345.3	599.7	120.5	8.80	3.44	11.59	
6,637.0	46.10	96.60	6,361.9	5,098.9	343.6	621.8	136.0	10.30	3.55	13.55	
6,669.0	47.40	100.70	6,383.9	5,120.9	340.0	644.8	153.5	10.18	4.06	12.81	

Received Office of Oil & Gas JUL 29 2015



17-05951

Phoenix
Survey Report



Database:	EDM 5000.1 Single User Db	Local Co-ordinate Reference:	Site Doddridge County 513136
Company:	EQT Production - Marcellus	TVD Reference:	KB@23ft @ 1263.0usft
Project:	Doddridge County, WV Grid	MD Reference:	KB@23ft @ 1263.0usft
Site:	Doddridge County 513136	North Reference:	Grid
Well:	Well #513136	Survey Calculation Method:	Minimum Curvature
Wellbore:	Well #513136		
Design:	As Drilled Surveys		

Survey										
Measured Depth (usft)	Inclination (°)	Azimuth (°)	Vertical Depth (usft)	Subsea Depth (usft)	+N/-S (usft)	+E/-W (usft)	Vertical Section (usft)	Dogleg Rate (°/100usft)	Build Rate (°/100usft)	Turn Rate (°/100usft)
6,700.0	48.80	104.00	6,404.6	5,141.6	335.1	667.3	171.8	9.12	4.52	10.65
6,732.0	49.90	107.10	6,425.4	5,162.4	328.6	690.7	191.8	8.11	3.44	9.69
6,764.0	50.20	110.70	6,446.0	5,183.0	320.6	713.9	212.8	8.67	0.94	11.25
6,796.0	50.50	113.20	6,466.4	5,203.4	311.4	736.8	234.5	6.09	0.94	7.81
6,827.0	51.60	116.50	6,485.9	5,222.9	301.3	758.6	256.3	9.01	3.55	10.65
6,859.0	53.80	118.60	6,505.3	5,242.3	289.5	781.2	279.8	8.63	6.88	6.56
6,890.0	56.00	120.40	6,523.1	5,260.1	277.0	803.3	303.6	8.54	7.10	5.81
6,922.0	58.70	122.50	6,540.4	5,277.4	263.0	826.2	329.1	10.09	8.44	6.56
6,953.0	61.10	125.30	6,555.9	5,292.9	248.0	848.5	354.9	11.00	7.74	9.03
6,985.0	63.00	128.70	6,570.9	5,307.9	231.0	871.1	382.4	11.11	5.94	10.63
7,016.0	64.30	131.90	6,584.7	5,321.7	213.0	892.2	409.8	10.16	4.19	10.32
7,048.0	65.80	134.90	6,598.2	5,335.2	193.1	913.3	438.6	9.71	4.69	9.38
7,079.0	67.50	137.90	6,610.5	5,347.5	172.5	932.9	467.0	10.44	5.48	9.68
7,111.0	70.10	140.10	6,622.0	5,359.0	150.0	952.5	496.8	10.35	8.13	6.88
7,142.0	73.20	141.70	6,631.8	5,368.8	127.1	971.0	526.3	11.14	10.00	5.16
7,173.0	74.60	144.20	6,640.4	5,377.4	103.4	989.0	556.0	8.97	4.52	8.06
7,205.0	76.00	146.40	6,648.5	5,385.5	77.9	1,006.6	586.8	7.96	4.38	6.88
7,236.0	77.70	147.60	6,655.6	5,392.6	52.6	1,023.0	616.8	6.65	5.48	3.87
7,268.0	79.70	149.00	6,661.8	5,398.8	25.9	1,039.5	647.8	7.58	6.25	4.38
7,299.0	82.20	150.20	6,666.7	5,403.7	-0.5	1,055.0	678.0	8.92	8.06	3.87
7,330.0	85.30	151.40	6,670.1	5,407.1	-27.4	1,070.1	708.3	10.71	10.00	3.87
7,362.0	89.10	152.30	6,671.6	5,408.6	-55.6	1,085.1	739.6	12.20	11.88	2.81
7,394.0	89.70	153.80	6,672.0	5,409.0	-84.1	1,099.6	770.7	5.05	1.88	4.69
7,456.0	90.60	156.10	6,671.8	5,408.8	-140.3	1,125.9	830.6	3.98	1.45	3.71
7,551.0	91.00	155.60	6,670.5	5,407.5	-226.9	1,164.7	922.0	0.67	0.42	-0.53
7,645.0	89.60	155.90	6,670.0	5,407.0	-312.6	1,203.3	1,012.5	1.52	-1.49	0.32
7,740.0	89.40	155.50	6,670.8	5,407.8	-399.2	1,242.4	1,104.0	0.47	-0.21	-0.42
7,835.0	89.80	155.30	6,671.5	5,408.5	-485.6	1,282.0	1,195.6	0.47	0.42	-0.21
7,929.0	90.60	156.60	6,671.2	5,408.2	-571.4	1,320.3	1,286.0	1.62	0.85	1.38
8,024.0	91.80	157.10	6,669.2	5,406.2	-658.8	1,357.6	1,376.9	1.37	1.26	0.53
8,119.0	92.00	155.10	6,666.0	5,403.0	-745.6	1,396.1	1,468.1	2.11	0.21	-2.11
8,213.0	90.60	155.00	6,663.9	5,400.9	-830.8	1,435.7	1,558.9	1.49	-1.49	-0.11
8,308.0	90.70	152.90	6,662.8	5,399.8	-916.1	1,477.5	1,651.1	2.21	0.11	-2.21
8,403.0	91.30	153.30	6,661.1	5,398.1	-1,000.8	1,520.4	1,743.6	0.76	0.63	0.42
8,497.0	89.70	153.50	6,660.3	5,397.3	-1,084.9	1,562.5	1,835.1	1.72	-1.70	0.21
8,592.0	89.70	155.60	6,660.8	5,397.8	-1,170.6	1,603.3	1,927.0	2.21	0.00	2.21
8,687.0	90.20	154.40	6,660.9	5,397.9	-1,256.7	1,643.5	2,018.8	1.37	0.53	0.53
8,782.0	90.00	154.10	6,660.7	5,397.7	-1,342.3	1,684.8	2,110.9	0.38	-0.21	-0.21
8,877.0	89.00	154.60	6,661.6	5,398.6	-1,427.9	1,725.9	2,203.0	1.18	-1.05	-0.53
8,972.0	89.10	155.70	6,663.1	5,400.1	-1,514.1	1,765.8	2,294.7	1.16	0.16	0.16
9,066.0	89.30	154.80	6,664.5	5,401.5	-1,599.5	1,805.1	2,385.4	0.98	0.21	0.21
9,160.0	90.30	156.70	6,664.8	5,401.8	-1,685.2	1,843.7	2,475.8	2.28	1.06	2.02

Received
Omniflex Oil & Gas
JUL 20 2015

Database:	EDM 5000.1 Single User Db	Local Co-ordinate Reference:	Site Doddridge County 513136
Company:	EQT Production - Marcellus	TVD Reference:	KB@23ft @ 1263.0usft
Project:	Doddridge County, WV Grid	MD Reference:	KB@23ft @ 1263.0usft
Site:	Doddridge County 513136	North Reference:	Grid
Well:	Well #513136	Survey Calculation Method:	Minimum Curvature
Wellbore:	Well #513136		
Design:	As Drilled Surveys		

Survey										
Measured Depth (usft)	Inclination (°)	Azimuth (°)	Vertical Depth (usft)	Subsea Depth (usft)	+N/-S (usft)	+E/-W (usft)	Vertical Section (usft)	Dogleg Rate (°/100usft)	Build Rate (°/100usft)	Turn Rate (°/100usft)
9,255.0	90.90	155.40	6,663.8	5,400.8	-1,772.0	1,882.3	2,567.1	1.51	0.63	-1.37
9,350.0	90.00	154.50	6,663.0	5,400.0	-1,858.0	1,922.5	2,658.9	1.34	-0.95	-0.95
9,444.0	90.40	153.60	6,662.7	5,399.7	-1,942.6	1,963.7	2,750.1	1.05	0.43	-0.96
9,539.0	88.40	153.50	6,663.7	5,400.7	-2,027.6	2,006.0	2,842.5	2.11	-2.11	-0.11
9,633.0	89.80	155.90	6,665.2	5,402.2	-2,112.6	2,046.1	2,933.4	2.96	1.49	2.55
9,728.0	90.40	155.20	6,665.0	5,402.0	-2,199.1	2,085.5	3,025.0	0.97	0.63	-0.74
9,822.0	88.30	154.70	6,666.1	5,403.1	-2,284.2	2,125.3	3,115.8	2.30	-2.23	-0.53
9,917.0	88.70	155.40	6,668.6	5,405.6	-2,370.3	2,165.3	3,207.5	0.85	0.42	0.74
10,011.0	88.70	154.20	6,670.7	5,407.7	-2,455.3	2,205.3	3,298.4	1.28	0.00	-1.28
10,105.0	89.90	155.30	6,671.9	5,408.9	-2,540.4	2,245.4	3,389.3	1.73	1.28	1.17
10,200.0	90.10	153.40	6,671.9	5,408.9	-2,626.0	2,286.5	3,481.3	2.01	0.21	-2.00
10,295.0	89.40	149.50	6,672.3	5,409.3	-2,709.4	2,331.9	3,574.4	4.17	-0.74	-4.11
Final Survey=10370' MD/ 6673' TVD										
10,370.0	90.00	151.20	6,672.7	5,409.7	-2,774.6	2,369.0	3,648.2	2.40	0.80	2.27
Projection to TD=10425' MD/ 6673' TVD										
10,425.0	90.00	151.20	6,672.7	5,409.7	-2,822.8	2,395.5	3,702.2	0.00	0.00	0.00

Design Annotations				
Measured Depth (usft)	Vertical Depth (usft)	Local Coordinates		Comment
		+N/-S (usft)	+E/-W (usft)	
5,163.0	5,162.6	13.7	-7.6	Gyro Tie In=5163' MD
5,799.0	5,743.9	201.4	85.7	Final Pro D Survey=5799' MD
5,824.0	5,764.2	210.9	96.7	First Phoenix MWD Survey=5824' MD/ 5764' TVD
10,370.0	6,672.7	-2,774.6	2,369.0	Final Survey=10370' MD/ 6673' TVD
10,425.0	6,672.7	-2,822.8	2,395.5	Projection to TD=10425' MD/ 6673' TVD

Checked By: _____ Approved By: _____ Date: _____

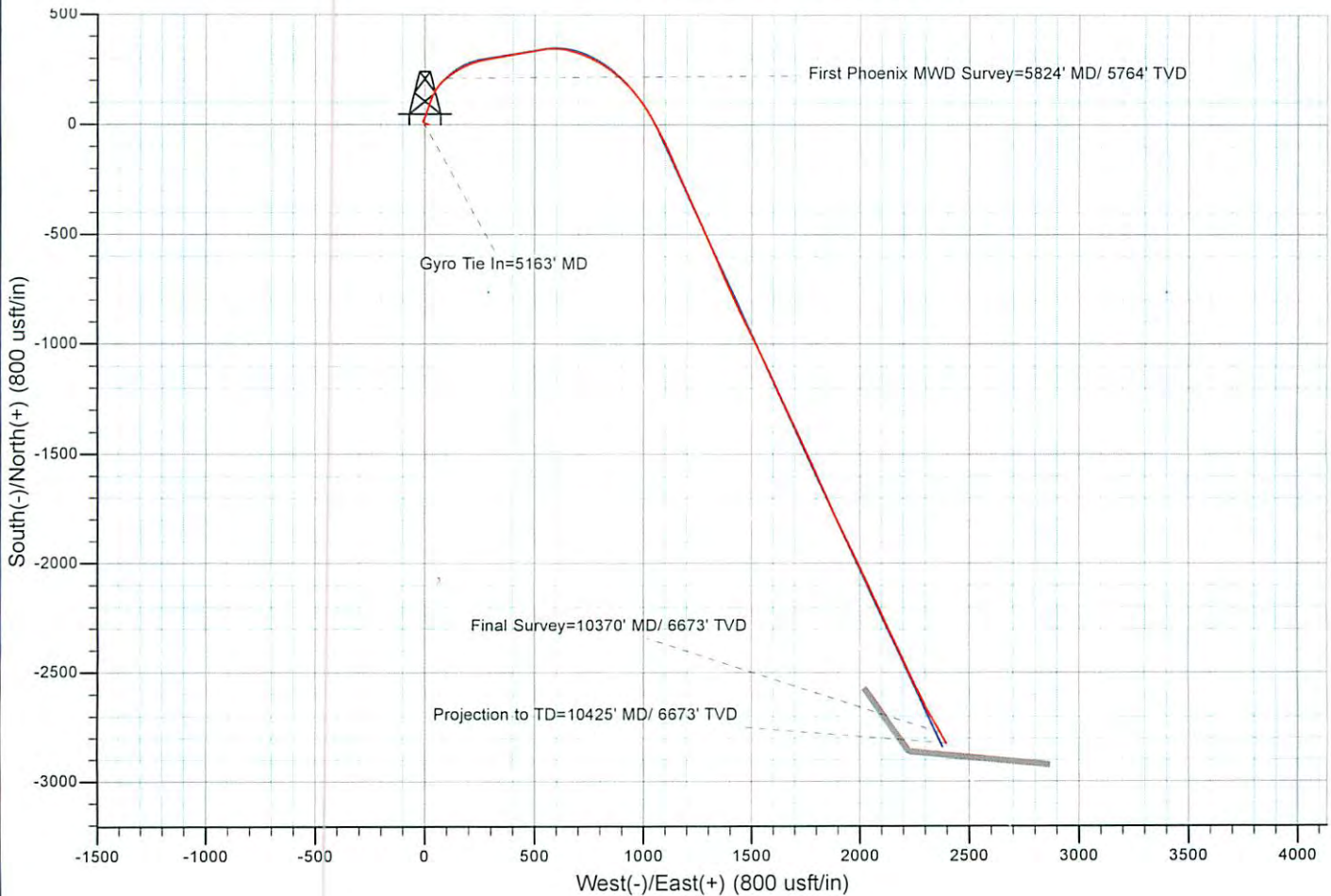
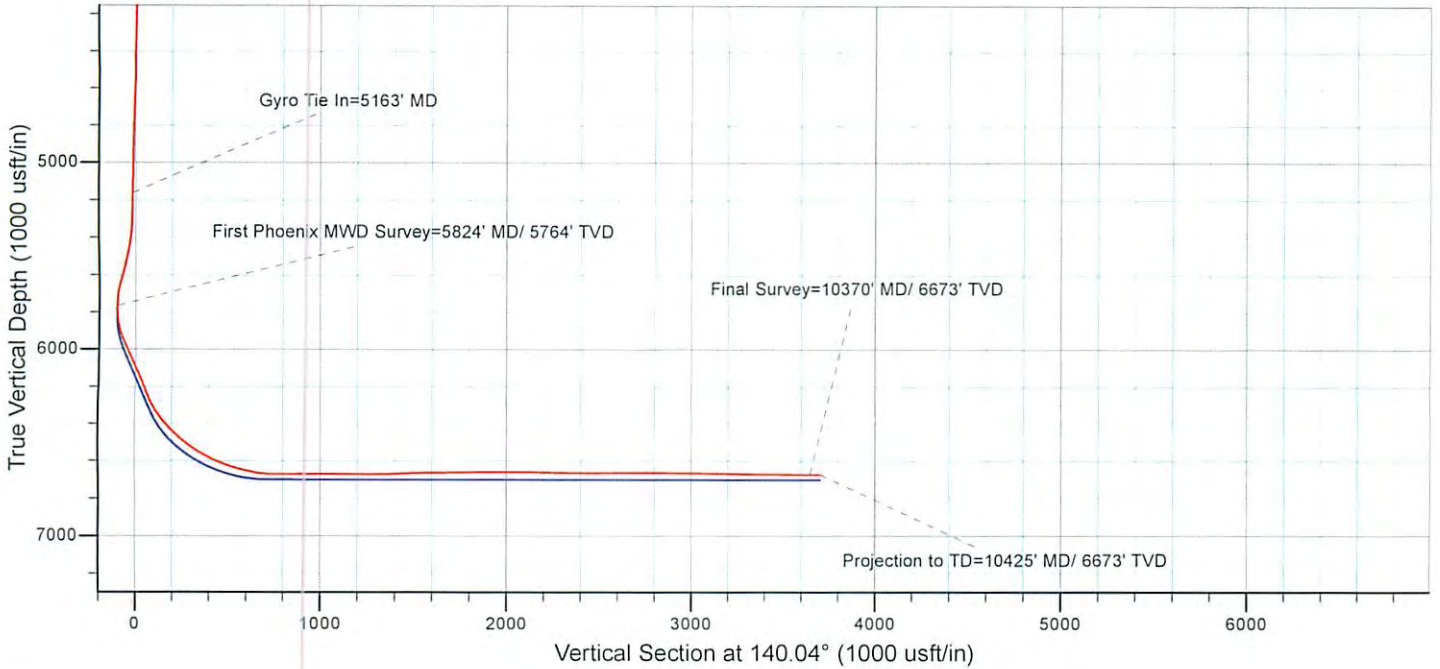
17-05951

PHOENIX
TECHNOLOGY SERVICES



EQT Production - Marcellus

Project: Doddridge County, WV Grid
Site: Doddridge County 513136
Well: Well #513136
Wellbore: Well #513136
Design: As Drilled Surveys



10/16/2015