



Antero Resources
 Yoke Unit 1H
 Doddridge County WV
 Northing: 14237723.89
 Easting: 1727481.74
 Sidetrack

WELL DETAILS: Yoke Unit 1H
 Ground Level: 1241.0
 Easting: 1727481.74
 Northing: 14237723.89
 Longitude: 80° 41' 33.507" W
 Latitude: 39° 12' 27.871" N
 Slot

PROJECT DETAILS: Doddridge County WV
 Geodetic System: Universal Transverse Mercator (US Survey Feet)
 NAD 1983 (NAD83) (CONUS)
 Ellipsoid: Clarke 1866
 Zone: Zone 17N (84 W to 78 W)
 System Datum: Mean Sea Level

REFERENCE INFORMATION
 Produced by Scientific Drilling International
 421 South Eagle Lane
 Oklahoma City, Oklahoma 73128
 Phone: 405-787-3663
 Fax: 405-787-3663
 Website: www.scientificdrilling.com

Well Location Coordinates (NAD 83)

+E/W	Northing	Easting	Latitude	Longitude
0.0	14237723.89	1727481.74	39° 12' 27.871" N	80° 41' 33.507" W
0.0	14237723.89	1727481.74	39° 12' 27.871" N	80° 41' 33.507" W
4.339	14230857.03	1732550.49	39° 11' 17.834" N	80° 40' 31.553" W
4.339	14230857.03	1732550.49	39° 11' 17.834" N	80° 40' 31.553" W

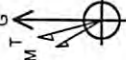
4,337,744m 528,030m

LEGEND

- Yoke Unit 2H, Original Wellpath, Original Wellpath VC
- Yoke Unit 1H, Sidetrack, Plan 3 ST1 V0
- Yoke Unit 1H, Original Wellpath, Original Wellpath VC
- Sidetrack

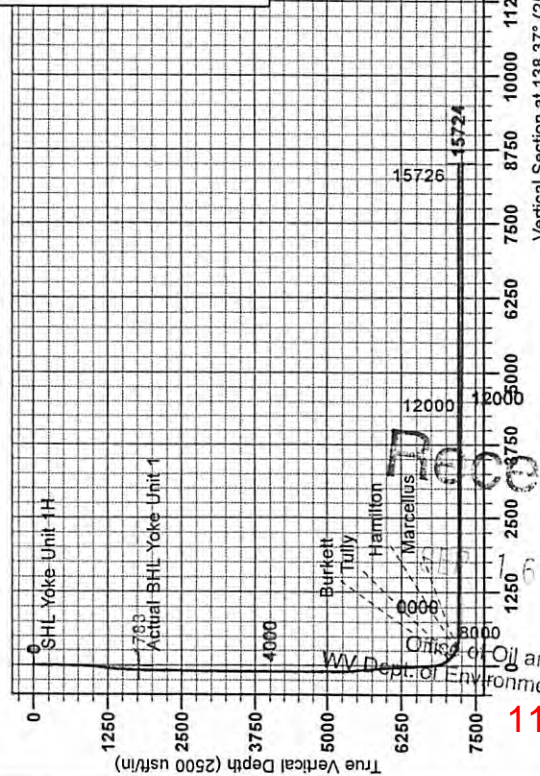
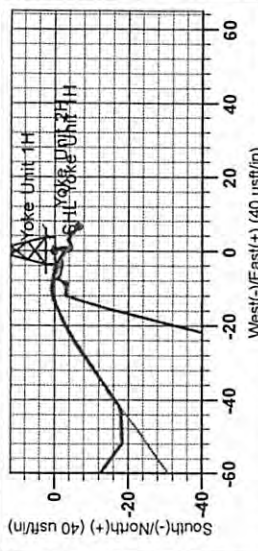
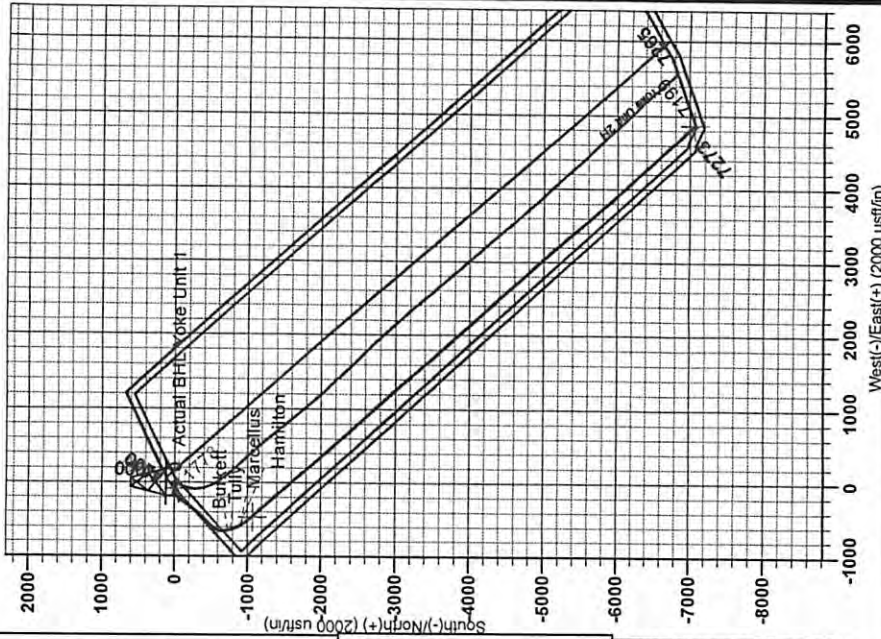


Genie Lightfoot
 Scientific Drilling International
 421 South Eagle Lane
 Oklahoma City, OK 73128
 405-787-3663



To convert Magnetic North to Grid, Subtract 8.65°
 To convert True North to Grid, Subtract 0.19°

Magnetic Field
 Strength: 52422.3nT
 Dip Angle: 66.88°
 Date: 12/22/2012
 Model: IGRF2010



17-06097

Received

11/08/2013
 Office of Oil and Gas
 Environmental Protection