

RECEIVED

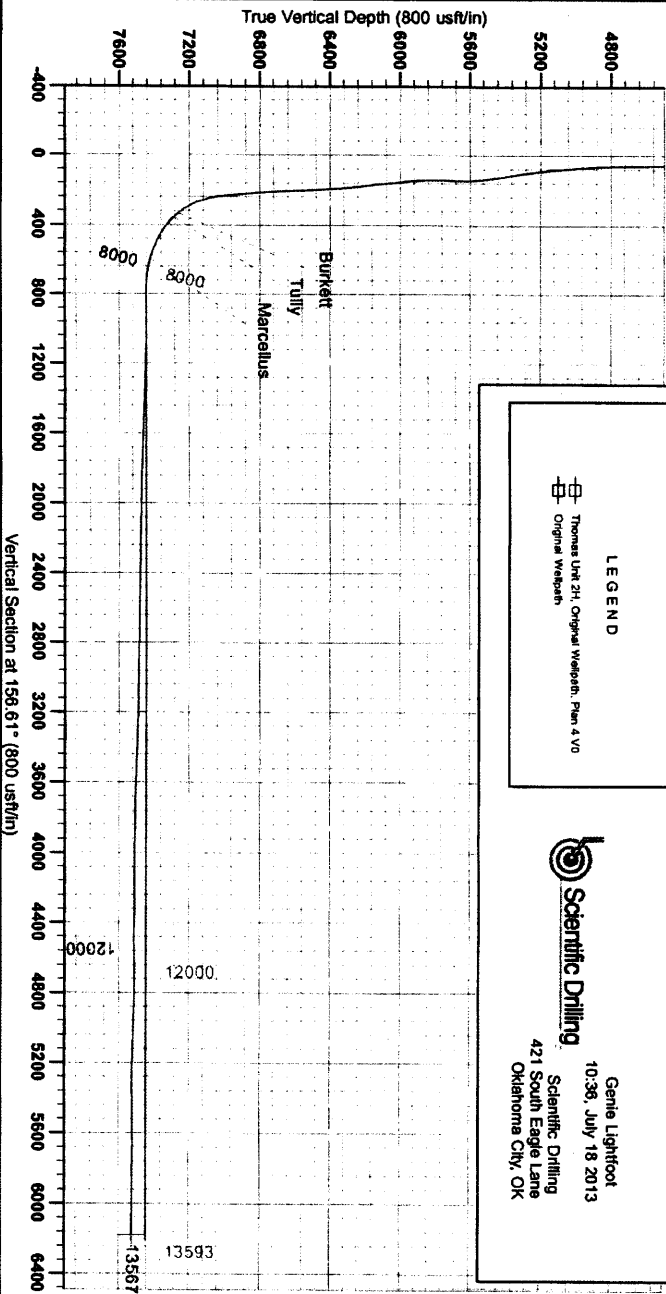
SEP 16 2013

WV GEOLOGICAL SURVEY
MORGANTOWN, WV

4701706118



Antero Resources
Thomas Unit 2H
Doddridge County WV
Northing: 14302244.81
Easting: 1765058.11
Original Wellpath



WELL DETAILS: Thomas Unit 2H

ANUS	VELV	Necking	Ground Level:	1269.0	Latitude	39° 27' 4.83" N	Longitude	80° 33' 51.88" W	Spot
0.0	0.0	14302244.81	Drilling	1765058.11	39° 27' 4.83" N	80° 33' 51.88" W	Thomas 2H		

PROJECT DETAILS: Doddridge County WV

Geologic System: Universal Transverse Mercator (US Survey/Foot)
Datum: NAD 83 (NAD80 CONUS)
Elevation: Contour 1000
Zone: Zone 17N (4° W to 7° W)
System Datum: Mean Sea Level

WELL LOCATION COORDINATES (NAD 83)

Name	TVC	+N/-S	+E/-W	Necking	Easting	Latitude	Longitude
SHL Thomas Unit 2H	0.0	0.0	0.0	0.0	1765058.11	39° 27' 4.83" N	80° 33' 51.88" W
Actual SHL Thomas Unit 2H	7575.8	-5047.0	3895.0	14287187.83	1768953.8637	39° 27' 4.191" N	80° 32' 42.888" W
SHL (UTM meters)			4,359.551m		538.0059m		
BHL (UTM meters)			4,357.984m		539.139m		

LEGEND

- Thomas Unit 2H, Original Wellpath, Plan 4 V0
- Original Wellpath

Scientific Drilling
Gentle Lightfoot
10:36 July 18 2013
Scientific Drilling
421 South Eagle Lane
Oklahoma City, OK

