



Antero Resources
Thomas Unit 1H
Doddridge County WV
Northing: 14302236.90
Easting: 1765063.24
Original Wellpath

SHL Thomas Unit 1H

Middlesex

Burkett

Tully

Hamilton

Marcellus

Office of Oil and Gas

West Virginia Dept. of Environmental Protection

Received

11/8/2013

11/08/2013

WELL DETAILS: Thomas Unit 1H

Ground Level:	1263.0	Slot	Thomas 1H
Eastings:	1765063.24	Longitude	83° 33' 31.804 W
Northings:	14302236.90	Latitude	39° 23' 4.204 N

PROJECT DETAILS: Doddridge County WV

Geoidetic System: Universal Transverse Mercator (US Survey Feet)
 Datum: NAD83 (CONUS)
 Ellipsoid: Clarke 1866
 Zone: Zone 17N (84 W to 76 W)
 System Datum: Mean Sea Level

- LEGEND**
- Kemper Unit 1H, Original Wellpath, Original Wellpath V0
 - Thomas Unit 1H, Original Wellpath, Plan 5 V0
 - Thomas Unit 2H, Original Wellpath, Original Wellpath V0
 - Original Wellpath

Gene Lightfoot
 10:27, July 18 2013

Scientific Drilling
 421 South Eagle Lane
 Oklahoma City, OK

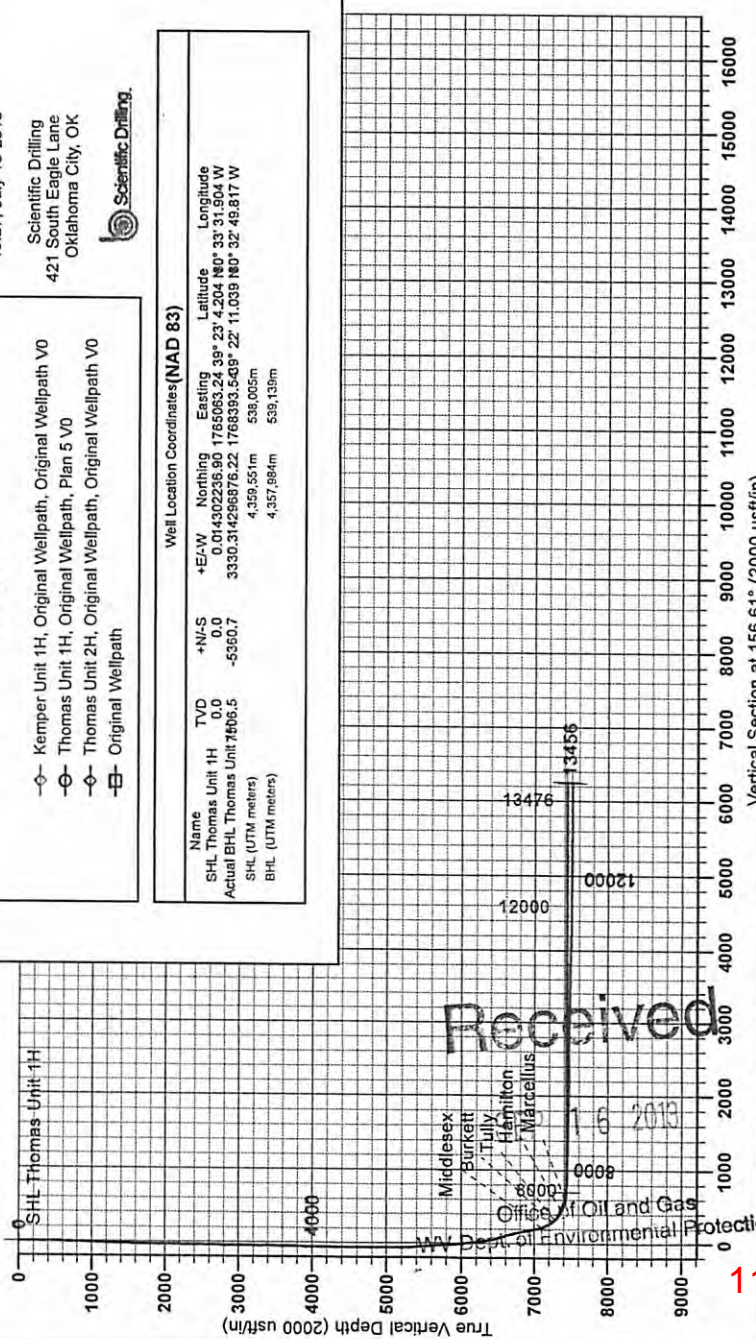
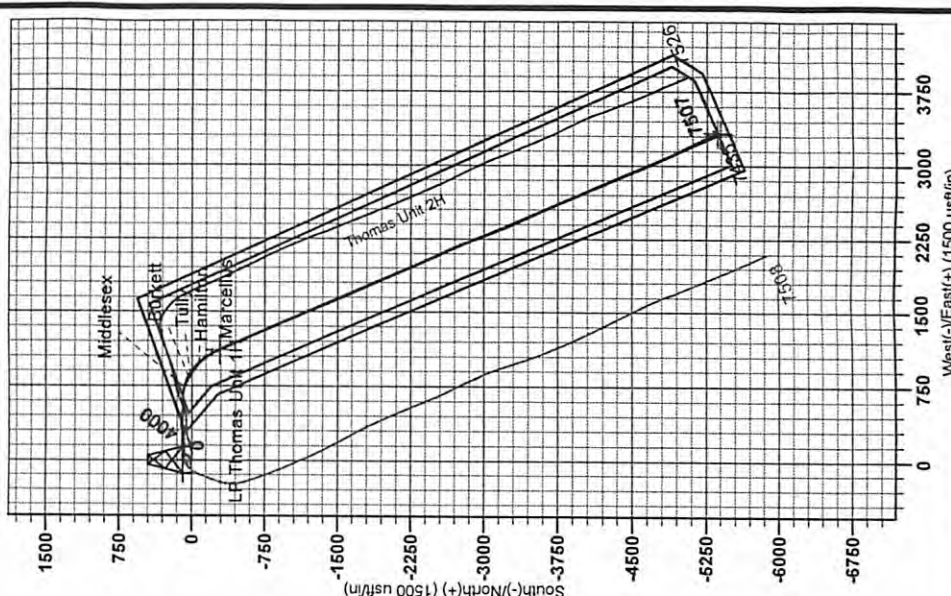
Well Location Coordinates (NAD 83)

Name	TVD	+N/S	+E/W	Northing	Easting	Latitude	Longitude
SHL Thomas Unit 1H	0.0	0.0	0.0	0.014302236.90	1765063.24	39° 23' 4.204 N	83° 33' 31.804 W
Actual BHL Thomas Unit 1H	496.5	-5350.7	3330.3	14286876.22	17688393.5	40° 22' 11.033 N	80° 32' 48.817 W
SHL (UTM meters)			4,359.351m	538,005m			
BHL (UTM meters)			4,357,884m	539,139m			

To convert Magnetic North to Grid, Subtract 8.87*
 To convert True North to Grid, Subtract 0.28*

Azimuths to Grid North
 True North: -0.28*
 Magnetic North: -8.87*

Magnetic Field
 Strength: 52004.8911
 Declination: 11.033
 Data: 11/08/2012
 Model: IGRF2010



17.06120