

WV Department of
Environmental Protection

MAY 26 2015

Office of Oil and Gas

RECEIVED

WELL DETAILS: Furbey Unit 1H
 Ground Level: 1256.0
 Longitude: 86° 31' 57.578 W
 Latitude: 39° 12' 0.579 N
 Easting: 1772813.38
 Northing: 14235157.40

PROJECT DETAILS: Doddridge County WW
 Geoidetic System: Universal Transverse Mercator (US Survey Feet)
 NAD 1983 (NAD83 CONUS)
 Ellipsoid: Clarke 1866
 Zone: Zone 17N (84 W to 78 W)
 System Datum: Mean Sea Level

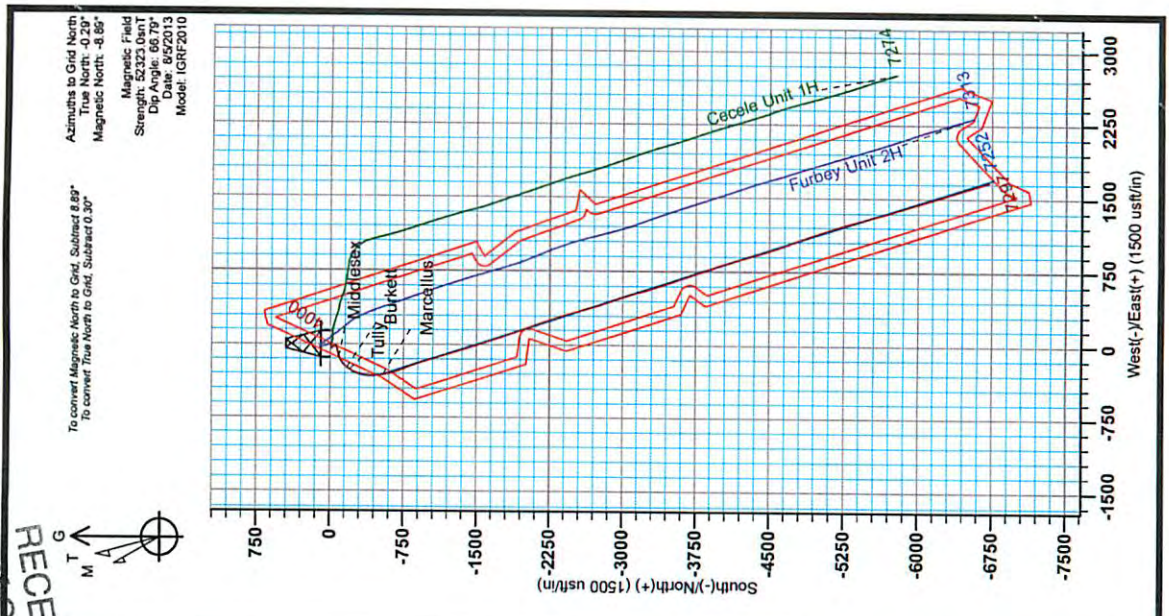
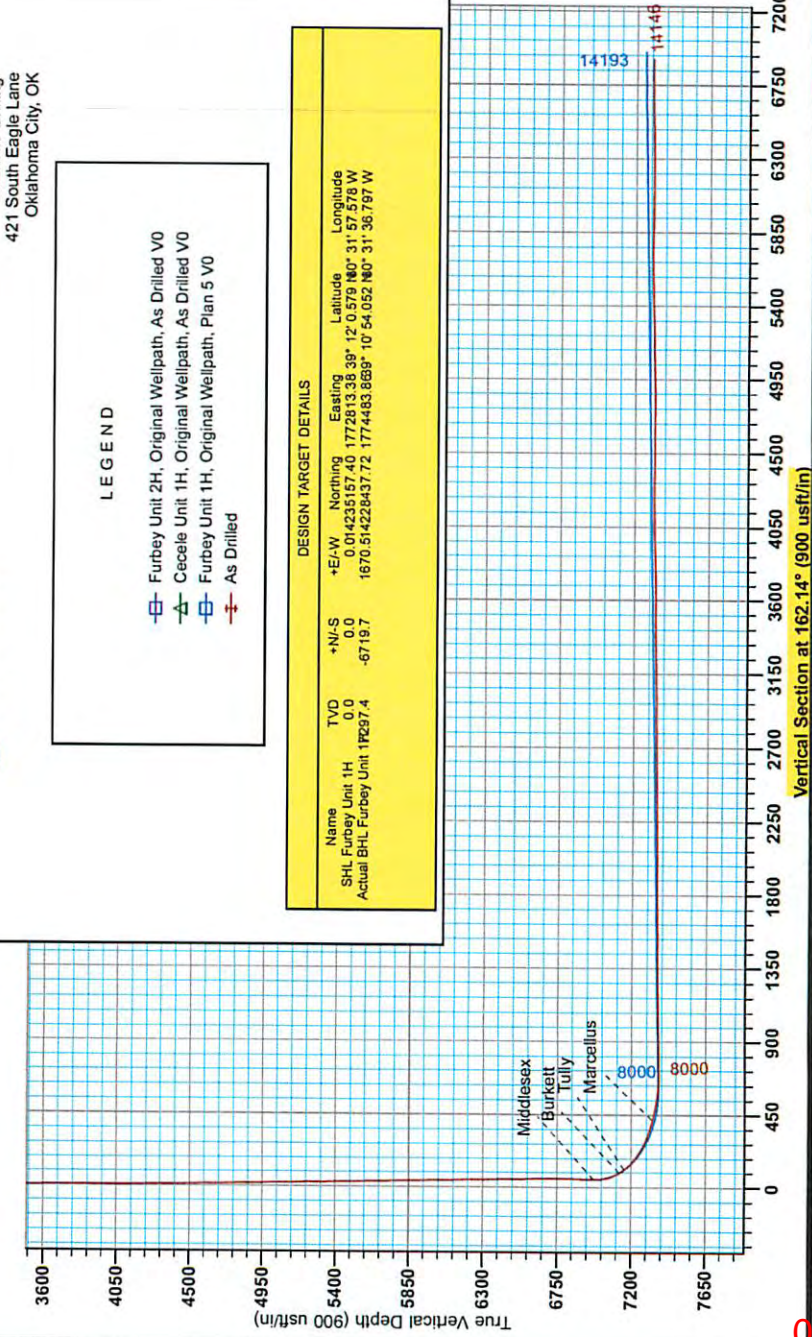
Genie Lightfoot
 14:05, February 12 2014
 Scientific Drilling
 421 South Eagle Lane
 Oklahoma City, OK

LEGEND
 - Furbey Unit 2H, Original Wellpath, As Drilled V0
 - Cecele Unit 1H, Original Wellpath, As Drilled V0
 - Furbey Unit 1H, Original Wellpath, Plan 5 V0
 - As Drilled

DESIGN TARGET DETAILS			
Name	TVD	+N/S	+E/W
SHL Furbey Unit 1H	0.0	0.0	0.0
Actual BHL Furbey Unit 1H	17297.4	-6719.7	1670.514228437.72
			1772813.38 38° 12' 0.579 N0° 31' 36.797 W



Antero Resources
 Furbey Unit 1H
 Doddridge County WW
 Northing: 14235157.40
 Easting: 1772813.38
 As Drilled



To convert Magnetic North to Grid, Subtract 8.89°
 To convert True North to Grid, Subtract 0.30°
 Magnetic North: -8.89°
 Azimuths to Grid North: True North: 0.00°
 Magnetic Field
 Strength: 52323.0usT
 Dip Angle: 66.79°
 Date: 8/5/2013
 Model: IGRF2010

06/05/2015



Antero Resources

**Doddridge County WV
Cecele/Furbey Pad
Furbey Unit 1H
Original Wellpath**

Design: As Drilled

EOW Completion Report

12 February, 2014

RECEIVED
Office of Oil and Gas

MAY 26 2015

WV Department of
Environmental Protection





Company:	Antero Resources	Local Co-ordinate Reference:	Well Furbey Unit 1H
Project:	Doddridge County WV	TVD Reference:	Furbey 1H 1358 GL + 22 KB @ 1380.0usft
Site:	Cecele/Furbey Pad	MD Reference:	Furbey 1H 1358 GL + 22 KB @ 1380.0usft
Well:	Furbey Unit 1H	North Reference:	Grid
Wellbore:	Original Wellpath	Survey Calculation Method:	Minimum Curvature
Design:	As Drilled	Database:	Oklahoma District

Project	Doddridge County WV, McClellan District		
Map System:	Universal Transverse Mercator (US Survey Fee	System Datum:	Mean Sea Level
Geo Datum:	NAD 1927 (NADCON CONUS)		
Map Zone:	Zone 17N (84 W to 78 W)		

Site	Cecele/Furbey Pad				
Site Position:		Northing:	14,235,138.97 usft	Latitude:	39° 12' 0.396 N
From:	Map	Easting:	1,772,821.15 usft	Longitude:	80° 31' 57.481 W
Position Uncertainty:	2.0 usft	Slot Radius:	13-3/16"	Grid Convergence:	0.30 °

Well	Furbey Unit 1H, Marcellus					
Well Position	+N/-S	0.0 usft	Northing:	14,235,157.40 usft	Latitude:	39° 12' 0.579 N
	+E/-W	0.0 usft	Easting:	1,772,813.38 usft	Longitude:	80° 31' 57.578 W
Position Uncertainty		2.0 usft	Wellhead Elevation:	1,380.0 usft	Ground Level:	1,358.0 usft

Wellbore	Original Wellpath				
Magnetics	Model Name	Sample Date	Declination (°)	Dip Angle (°)	Field Strength (nT)
	IGRF2010	8/5/2013	-8.59	66.79	52,323

Design	As Drilled				
Audit Notes:					
Version:	1.0	Phase:	ACTUAL	Tie On Depth:	0.0
Vertical Section:		Depth From (TVD) (usft)	+N/-S (usft)	+E/-W (usft)	Direction (°)
		0.0	0.0	0.0	162.14

Survey Program	Date 2/12/2014				
From (usft)	To (usft)	Survey (Wellbore)	Tool Name	Description	
109.0	6,517.0	Survey #4 Def Gyro to KOP (Original Well	SDI Standard Keeper	Scientific Drilling Intl. Standard Wireline Keeper	
6,549.0	14,146.0	Survey #5 MWD (Original Wellpath)	MWD SDI	MWD - Standard ver 1.0.1	

Survey									
MD (usft)	Inc (°)	Azi (azimuth) (°)	TVD (usft)	N/S (usft)	E/W (usft)	V. Sec (usft)	DLeg (°/100usft)		
0.0	0.00	0.00	0.0	0.0	0.0	0.0	0.0	0.00	
109.0	0.03	172.66	109.0	0.0	0.0	0.0	0.0	0.03	
209.0	0.06	195.97	209.0	-0.1	0.0	0.1	0.0	0.03	
309.0	0.09	154.24	309.0	-0.2	0.0	0.2	0.0	0.06	
409.0	0.05	142.30	409.0	-0.3	0.1	0.3	0.0	0.04	
509.0	0.06	174.47	509.0	-0.4	0.1	0.4	0.0	0.03	
609.0	0.06	90.31	609.0	-0.5	0.2	0.5	0.0	0.08	
709.0	0.09	55.83	709.0	-0.4	0.3	0.5	0.0	0.05	
809.0	0.14	94.29	809.0	-0.4	0.5	0.5	0.0	0.09	
909.0	0.11	98.17	909.0	-0.4	0.7	0.6	0.0	0.03	
1,009.0	0.12	108.62	1,009.0	-0.5	0.9	0.7	0.0	0.02	

RECEIVED
Office of Oil and Gas
MAY 26 2015
WV Department of
Environmental Protection



Company: Antero Resources	Local Co-ordinate Reference: WV Department of Environmental Protection
Project: Doddridge County WV	TVD Reference: Furbey 1H 1358 GL + 22 KB @ 1380.0usft
Site: Cecele/Furbey Pad	MD Reference: Furbey 1H 1358 GL + 22 KB @ 1380.0usft
Well: Furbey Unit 1H	North Reference: Grid
Wellbore: Original Wellpath	Survey Calculation Method: Minimum Curvature
Design: As Drilled	Database: Oklahoma District

Survey									
MD (usft)	Inc (°)	Azi (azimuth) (°)	TVD (usft)	N/S (usft)	E/W (usft)	V. Sec (usft)	DLeg (°/100usft)		
1,109.0	0.12	128.58	1,109.0	-0.6	1.1	0.9	0.04		
1,209.0	0.31	102.10	1,209.0	-0.7	1.4	1.1	0.21		
1,309.0	0.31	123.22	1,309.0	-0.9	1.9	1.4	0.11		
1,409.0	0.36	121.87	1,409.0	-1.2	2.4	1.9	0.05		
1,509.0	0.75	249.96	1,509.0	-1.6	2.0	2.1	1.01		
1,609.0	2.63	247.26	1,608.9	-2.7	-0.7	2.4	1.88		
1,709.0	4.60	252.54	1,708.7	-4.8	-6.6	2.5	2.00		
1,809.0	5.95	250.29	1,808.3	-7.7	-15.3	2.7	1.37		
1,909.0	5.51	251.91	1,907.8	-11.0	-24.8	2.9	0.47		
2,009.0	3.30	253.54	2,007.5	-13.3	-32.1	2.8	2.21		
2,109.0	2.65	255.57	2,107.4	-14.7	-37.1	2.6	0.66		
2,209.0	1.75	256.09	2,207.3	-15.6	-40.8	2.4	0.90		
2,309.0	1.02	257.34	2,307.3	-16.2	-43.2	2.2	0.73		
2,409.0	0.94	262.39	2,407.3	-16.5	-44.9	1.9	0.12		
2,509.0	0.49	262.14	2,507.3	-16.7	-46.1	1.7	0.45		
2,609.0	0.51	276.33	2,607.2	-16.7	-47.0	1.5	0.13		
2,709.0	0.39	275.31	2,707.2	-16.6	-47.7	1.1	0.12		
2,809.0	0.19	303.44	2,807.2	-16.5	-48.2	0.9	0.24		
2,909.0	0.10	313.65	2,907.2	-16.3	-48.4	0.7	0.09		
3,009.0	0.20	95.37	3,007.2	-16.3	-48.3	0.7	0.29		
3,109.0	0.86	94.14	3,107.2	-16.3	-47.4	1.0	0.66		
3,209.0	0.62	99.32	3,207.2	-16.5	-46.1	1.5	0.25		
3,309.0	0.38	107.52	3,307.2	-16.7	-45.3	2.0	0.25		
3,409.0	0.55	102.94	3,407.2	-16.9	-44.5	2.4	0.17		
3,509.0	0.57	103.01	3,507.2	-17.1	-43.5	2.9	0.02		
3,609.0	0.62	98.70	3,607.2	-17.3	-42.5	3.4	0.07		
3,709.0	0.48	114.76	3,707.2	-17.5	-41.6	3.9	0.21		
3,809.0	0.54	118.76	3,807.2	-17.9	-40.8	4.6	0.07		
3,909.0	0.52	117.82	3,907.2	-18.4	-40.0	5.2	0.02		
4,009.0	0.49	123.38	4,007.2	-18.8	-39.2	5.9	0.06		
4,109.0	0.63	121.42	4,107.2	-19.4	-38.4	6.6	0.14		
4,209.0	0.72	126.62	4,207.2	-20.0	-37.4	7.6	0.11		
4,309.0	0.69	123.64	4,307.2	-20.7	-36.4	8.6	0.05		
4,409.0	0.72	129.77	4,407.2	-21.5	-35.4	9.6	0.08		
4,509.0	0.75	137.29	4,507.2	-22.3	-34.5	10.7	0.10		
4,609.0	0.85	147.31	4,607.2	-23.4	-33.7	12.0	0.17		
4,709.0	1.12	146.58	4,707.1	-24.9	-32.7	13.7	0.27		
4,809.0	1.12	149.13	4,807.1	-26.5	-31.7	15.5	0.05		
4,909.0	1.18	153.46	4,907.1	-28.3	-30.7	17.5	0.11		
5,009.0	1.28	158.51	5,007.1	-30.3	-29.8	19.7	0.15		
5,109.0	1.23	154.45	5,107.0	-32.3	-29.0	21.8	0.10		
5,209.0	1.10	159.43	5,207.0	-34.1	-28.2	23.9	0.16		
5,309.0	1.15	163.07	5,307.0	-36.0	-27.5	25.8	0.09		
5,409.0	1.08	158.17	5,407.0	-37.8	-26.9	27.8	0.12		



EOW Completion Report

Company: Antero Resources	Local Co-ordinate Reference: Well Furbey Unit 1H
Project: Doddridge County WV	TVD Reference: Furbey Unit 1H 58 GL + 22 KB @ 1380.0usft
Site: Cecele/Furbey Pad	MD Reference: Environmental Protection
Well: Furbey Unit 1H	North Reference: Grid
Wellbore: Original Wellpath	Survey Calculation Method: Minimum Curvature
Design: As Drilled	Database: Oklahoma District

MD (usft)	Inc (°)	Azi (azimuth) (°)	TVD (usft)	N/S (usft)	E/W (usft)	V. Sec (usft)	DLeg (°/100usft)
5,509.0	0.98	159.86	5,507.0	-39.5	-26.3	29.6	0.10
5,609.0	1.13	159.50	5,607.0	-41.2	-25.6	31.4	0.15
5,709.0	1.14	156.81	5,706.9	-43.1	-24.9	33.4	0.05
5,809.0	1.23	156.28	5,806.9	-45.0	-24.1	35.4	0.09
5,909.0	1.21	154.94	5,906.9	-46.9	-23.2	37.5	0.03
6,009.0	1.15	151.27	6,006.9	-48.7	-22.2	39.6	0.10
6,109.0	1.20	153.06	6,106.9	-50.6	-21.3	41.6	0.06
6,209.0	1.10	142.13	6,206.8	-52.3	-20.2	43.5	0.24
6,309.0	1.07	148.04	6,306.8	-53.8	-19.1	45.3	0.12
6,409.0	0.94	155.73	6,406.8	-55.3	-18.3	47.1	0.19
6,509.0	1.07	146.16	6,506.8	-56.9	-17.5	48.8	0.21
6,517.0	1.13	146.66	6,514.8	-57.0	-17.4	48.9	0.76
6,549.0	0.86	142.80	6,546.8	-57.4	-17.1	49.4	0.87
6,581.0	1.04	130.79	6,578.8	-57.8	-16.7	49.9	0.84
6,613.0	0.97	161.47	6,610.8	-58.3	-16.4	50.4	1.67
6,645.0	2.73	228.72	6,642.8	-59.0	-16.9	51.0	7.87
6,677.0	5.89	240.32	6,674.7	-60.3	-18.9	51.7	10.19
6,709.0	9.27	247.53	6,706.4	-62.1	-22.7	52.2	10.95
6,741.0	12.01	251.65	6,737.8	-64.2	-28.2	52.4	8.88
6,774.0	14.50	254.89	6,769.9	-66.3	-35.5	52.3	7.87
6,806.0	18.08	256.37	6,800.7	-68.6	-44.2	51.7	11.26
6,838.0	21.19	256.51	6,830.8	-71.1	-54.6	50.9	9.72
6,870.0	24.23	255.96	6,860.3	-74.0	-66.6	50.0	9.52
6,902.0	27.36	255.46	6,889.1	-77.5	-80.1	49.2	9.80
6,934.0	30.05	254.99	6,917.2	-81.4	-95.0	48.3	8.44
6,966.0	32.89	255.37	6,944.5	-85.7	-111.1	47.4	8.90
6,998.0	35.24	251.28	6,971.0	-90.8	-128.3	47.1	10.25
7,001.0	35.43	250.86	6,973.4	-91.4	-129.9	47.1	10.19
Middlesex							
7,030.0	37.31	247.02	6,996.8	-97.6	-145.9	48.1	10.19
7,062.0	38.75	241.01	7,022.0	-106.2	-163.6	50.9	12.41
7,094.0	40.89	236.51	7,046.6	-116.8	-181.1	55.7	11.21
7,126.0	43.05	231.82	7,070.4	-129.4	-198.5	62.3	11.90
7,157.0	45.24	226.40	7,092.6	-143.5	-214.8	70.7	14.07
7,189.0	47.56	222.61	7,114.7	-160.0	-231.0	81.5	11.23
7,211.0	48.81	219.50	7,129.4	-172.4	-241.8	90.0	11.95
Burkett							
7,221.0	49.40	218.13	7,135.9	-178.3	-246.5	94.1	11.95
7,253.0	51.34	213.31	7,156.3	-198.3	-260.9	108.7	13.09
7,255.0	51.43	212.98	7,157.6	-199.6	-261.7	109.7	13.60
Tully							
7,285.0	52.92	208.17	7,176.0	-220.0	-273.8	125.4	13.60
7,317.0	55.08	204.43	7,194.8	-243.2	-285.2	144.0	11.62
7,349.0	57.04	200.03	7,212.7	-267.8	-295.2	164.3	12.95
7,380.0	59.20	195.38	7,229.0	-292.8	-303.2	185.7	14.52

5107/50/90



MAY 26 2015



Company: Antero Resources	Local Co-ordinate Reference: W/Wellbore Unit 1H
Project: Doddridge County WV	TVD Reference: Furbey 1H 1358 GL + 22 KB @ 1380.0usft
Site: Cecele/Furbey Pad	MD Reference: Furbey 1H 1358 GL + 22 KB @ 1380.0usft
Well: Furbey Unit 1H	North Reference: Grid
Wellbore: Original Wellpath	Survey Calculation Method: Minimum Curvature
Design: As Drilled	Database: Oklahoma District

Survey

MD (usft)	Inc (°)	Azi (azimuth) (°)	TVD (usft)	N/S (usft)	E/W (usft)	V. Sec (usft)	DLeg (°/100usft)
7,412.0	61.98	191.70	7,244.8	-319.9	-309.7	209.5	13.26
7,445.0	64.27	188.82	7,259.7	-348.9	-315.0	235.5	10.43
7,477.0	65.53	186.02	7,273.2	-377.6	-318.7	261.7	8.85
7,509.0	68.32	183.47	7,285.8	-407.0	-321.1	288.9	11.39
7,541.0	70.73	179.59	7,297.0	-436.9	-321.9	317.1	13.63
7,573.0	72.36	176.79	7,307.1	-467.3	-321.0	346.3	9.74
7,605.0	74.23	174.21	7,316.3	-497.8	-318.6	376.1	9.68
7,637.0	75.31	171.60	7,324.7	-528.4	-314.7	406.5	8.56
7,649.0	75.82	171.18	7,327.7	-539.9	-313.0	417.9	5.46
Marcellus							
7,669.0	76.68	170.48	7,332.5	-559.1	-309.9	437.1	5.46
7,702.0	78.29	168.69	7,339.6	-590.8	-304.1	469.1	7.20
7,734.0	79.79	164.99	7,345.7	-621.4	-296.9	500.4	12.28
7,766.0	80.89	159.64	7,351.1	-651.4	-287.4	531.9	16.84
7,798.0	82.01	158.40	7,355.8	-681.0	-276.0	563.5	5.19
7,830.0	82.33	158.75	7,360.2	-710.5	-264.4	595.1	1.47
7,861.0	84.86	159.78	7,363.7	-739.3	-253.5	625.9	8.80
7,880.0	86.86	159.65	7,365.0	-757.1	-247.0	644.8	10.55
7,938.0	91.88	159.06	7,365.7	-811.3	-226.5	702.7	8.71
7,949.0	92.24	159.94	7,365.3	-821.6	-222.7	713.7	8.64
8,045.0	90.48	159.50	7,363.0	-911.6	-189.4	809.6	1.89
8,141.0	91.45	163.28	7,361.4	-1,002.6	-158.8	905.6	4.06
8,238.0	90.84	164.07	7,359.4	-1,095.7	-131.5	1,002.5	1.03
8,334.0	90.31	162.13	7,358.5	-1,187.5	-103.6	1,098.5	2.09
8,430.0	90.80	162.14	7,357.5	-1,278.9	-74.2	1,194.5	0.51
8,522.0	91.01	162.75	7,356.1	-1,366.6	-46.4	1,286.5	0.70
8,613.0	90.07	161.89	7,355.2	-1,453.3	-18.8	1,377.5	1.40
8,704.0	89.60	161.87	7,355.5	-1,539.8	9.5	1,468.5	0.52
8,795.0	91.89	161.69	7,354.3	-1,626.2	38.0	1,559.5	2.52
8,886.0	91.98	162.40	7,351.2	-1,712.7	66.0	1,650.4	0.79
8,977.0	90.75	160.29	7,349.1	-1,798.9	95.1	1,741.4	2.68
9,067.0	89.87	160.38	7,348.6	-1,883.6	125.4	1,831.3	0.98
9,158.0	90.22	159.94	7,348.5	-1,969.2	156.3	1,922.3	0.62
9,249.0	90.04	160.11	7,348.3	-2,054.8	187.4	2,013.2	0.27
9,340.0	90.66	160.99	7,347.7	-2,140.6	217.7	2,104.2	1.18
9,431.0	90.40	161.43	7,346.9	-2,226.7	247.0	2,195.1	0.56
9,522.0	90.66	161.96	7,346.1	-2,313.1	275.5	2,286.1	0.65
9,619.0	91.36	163.72	7,344.4	-2,405.8	304.2	2,383.1	1.95
9,715.0	90.75	165.03	7,342.6	-2,498.2	330.0	2,479.0	1.51
9,811.0	90.48	164.86	7,341.6	-2,590.9	354.9	2,574.9	0.33
9,907.0	91.19	162.92	7,340.2	-2,683.1	381.6	2,670.8	2.15
10,004.0	90.40	162.64	7,338.8	-2,775.8	410.3	2,767.8	0.86
10,100.0	90.03	161.79	7,338.5	-2,867.2	439.6	2,863.8	0.97
10,197.0	90.84	160.99	7,337.7	-2,959.1	470.6	2,960.8	1.17

5107/50/90



EOW Completion Report

RECEIVED
Office of Oil and Gas
Scientific Drilling

MAY 26 2015

Company: Antero Resources	Local Co-ordinate Reference: Well Furbey Unit 1H
Project: Doddridge County WV	TVD Reference: Furbey 1H 1358 GL + 22 KB @ 1380.0usft
Site: Cecele/Furbey Pad	MD Reference: Furbey 1H 1358 GL + 22 KB @ 1380.0usft
Well: Furbey Unit 1H	North Reference: Environmental Protection
Wellbore: Original Wellpath	Survey Calculation Method: Minimum Curvature
Design: As Drilled	Database: Oklahoma District

Survey

MD (usft)	Inc (°)	Azi (azimuth) (°)	TVD (usft)	N/S (usft)	E/W (usft)	V. Sec (usft)	DLeg (°/100usft)
10,294.0	90.22	162.40	7,336.8	-3,051.2	501.0	3,057.8	1.59
10,390.0	91.71	165.65	7,335.2	-3,143.4	527.4	3,153.7	3.72
10,486.0	90.92	161.87	7,333.0	-3,235.6	554.3	3,249.6	4.02
10,583.0	91.36	164.07	7,331.1	-3,328.3	582.7	3,346.6	2.31
10,679.0	90.04	160.73	7,329.9	-3,419.8	611.7	3,442.6	3.74
10,775.0	90.22	161.43	7,329.7	-3,510.6	642.8	3,538.6	0.75
10,872.0	90.13	160.90	7,329.4	-3,602.4	674.1	3,635.5	0.55
10,968.0	91.89	161.69	7,327.7	-3,693.3	704.9	3,731.5	2.01
11,064.0	91.77	160.99	7,324.6	-3,784.2	735.6	3,827.4	0.74
11,161.0	91.63	160.55	7,321.7	-3,875.8	767.6	3,924.4	0.48
11,257.0	91.01	160.55	7,319.5	-3,966.2	799.5	4,020.3	0.65
11,354.0	91.58	164.80	7,317.3	-4,058.8	828.4	4,117.3	4.42
11,450.0	90.57	163.01	7,315.5	-4,151.0	855.0	4,213.2	2.14
11,547.0	89.69	163.36	7,315.3	-4,243.9	883.1	4,310.2	0.98
11,640.0	89.16	162.57	7,316.3	-4,332.8	910.3	4,403.2	1.02
11,736.0	90.22	163.89	7,316.8	-4,424.7	938.0	4,499.1	1.76
11,831.0	89.77	161.48	7,316.8	-4,515.4	966.3	4,594.1	2.58
11,927.0	89.43	160.64	7,317.5	-4,606.2	997.4	4,690.1	0.94
12,023.0	89.43	158.88	7,318.4	-4,696.2	1,030.6	4,786.0	1.83
12,120.0	91.10	160.11	7,318.0	-4,787.1	1,064.6	4,882.9	2.14
12,216.0	91.28	160.11	7,316.0	-4,877.4	1,097.3	4,978.8	0.19
12,313.0	91.28	161.43	7,313.8	-4,968.9	1,129.2	5,075.8	1.36
12,409.0	91.20	161.28	7,311.7	-5,059.9	1,159.9	5,171.7	0.18
12,504.0	91.80	162.84	7,309.2	-5,150.2	1,189.1	5,266.7	1.76
12,600.0	91.45	161.78	7,306.5	-5,241.6	1,218.3	5,362.7	1.16
12,696.0	91.30	164.15	7,304.2	-5,333.4	1,246.4	5,458.6	2.47
12,793.0	91.36	164.33	7,302.0	-5,426.7	1,272.7	5,555.5	0.20
12,888.0	90.31	163.10	7,300.6	-5,517.9	1,299.4	5,650.5	1.70
12,985.0	90.84	164.59	7,299.6	-5,611.0	1,326.4	5,747.4	1.63
13,080.0	87.76	163.19	7,300.8	-5,702.3	1,352.7	5,842.4	3.56
13,176.0	88.72	163.01	7,303.7	-5,794.1	1,380.6	5,938.3	1.02
13,272.0	89.87	162.75	7,304.9	-5,885.8	1,408.9	6,034.3	1.23
13,369.0	89.25	161.52	7,305.6	-5,978.2	1,438.6	6,131.3	1.42
13,465.0	90.48	163.45	7,305.9	-6,069.7	1,467.5	6,227.3	2.38
13,560.0	90.66	162.40	7,304.9	-6,160.5	1,495.4	6,322.3	1.12
13,656.0	91.01	162.66	7,303.5	-6,252.1	1,524.2	6,418.2	0.45
13,752.0	91.19	163.01	7,301.7	-6,343.8	1,552.6	6,514.2	0.41
13,848.0	90.92	163.19	7,299.9	-6,435.6	1,580.5	6,610.2	0.34
13,944.0	90.13	161.87	7,299.0	-6,527.2	1,609.3	6,706.2	1.60
14,040.0	90.57	162.75	7,298.4	-6,618.6	1,638.4	6,802.2	1.02
14,088.0	90.57	162.31	7,298.0	-6,664.4	1,652.9	6,850.2	0.92
14,146.0	90.57	162.31	7,297.4	-6,719.7	1,670.5	6,908.2	0.00



Company:	Antero Resources	Local Co-ordinate Reference:	Well Furbey Unit 1H
Project:	Doddridge County WV	TVD Reference:	Furbey 1H 1358 GL + 22 KB @ 1380.0usft
Site:	Cecele/Furbey Pad	MD Reference:	Furbey 1H 1358 GL + 22 KB @ 1380.0usft
Well:	Furbey Unit 1H	North Reference:	Grid
Wellbore:	Original Wellpath	Survey Calculation Method:	Minimum Curvature
Design:	As Drilled	Database:	Oklahoma District

Design Annotations				
Measured Depth (usft)	Vertical Depth (usft)	Local Coordinates		Comment
		+N/-S (usft)	+E/-W (usft)	
7,001.0	6,973.4	-91.4	-129.9	Middlesex
7,211.0	7,129.4	-172.4	-241.8	Burkett
7,255.0	7,157.6	-199.6	-261.7	Tully
7,649.0	7,327.7	-539.9	-313.0	Marcellus

Checked By: _____ Approved By: _____ Date: _____

RECEIVED
Office of Oil and Gas

MAY 26 2015

WV Department of
Environmental Protection