



Antero Resources
 Piggott Unit 1H
 Doodridge County WV
 Northing: 14270977.43
 Easting: 1688820.33
 As Drilled

WELL DETAILS: Piggott Unit 1H
 Ground Level: 1140.0
 Slot
 Longitude: 80° 49' 44.046" W
 Latitude: 39° 17' 57.061" N
 Easting: 1688820.33
 Northing: 14270977.43

REFERENCE INFORMATION
 Co-ordinate (N/E) Reference: Well Piggott Unit 1H, Grid North
 Section (V/S) Reference: State of WV, 1983 AD @ 1142.046
 Measurement Method: Normal Coordinates
 Datum: NAD 1983
 Zone: 17N (84 W to 78 W)
 System Datum: Mean Sea Level

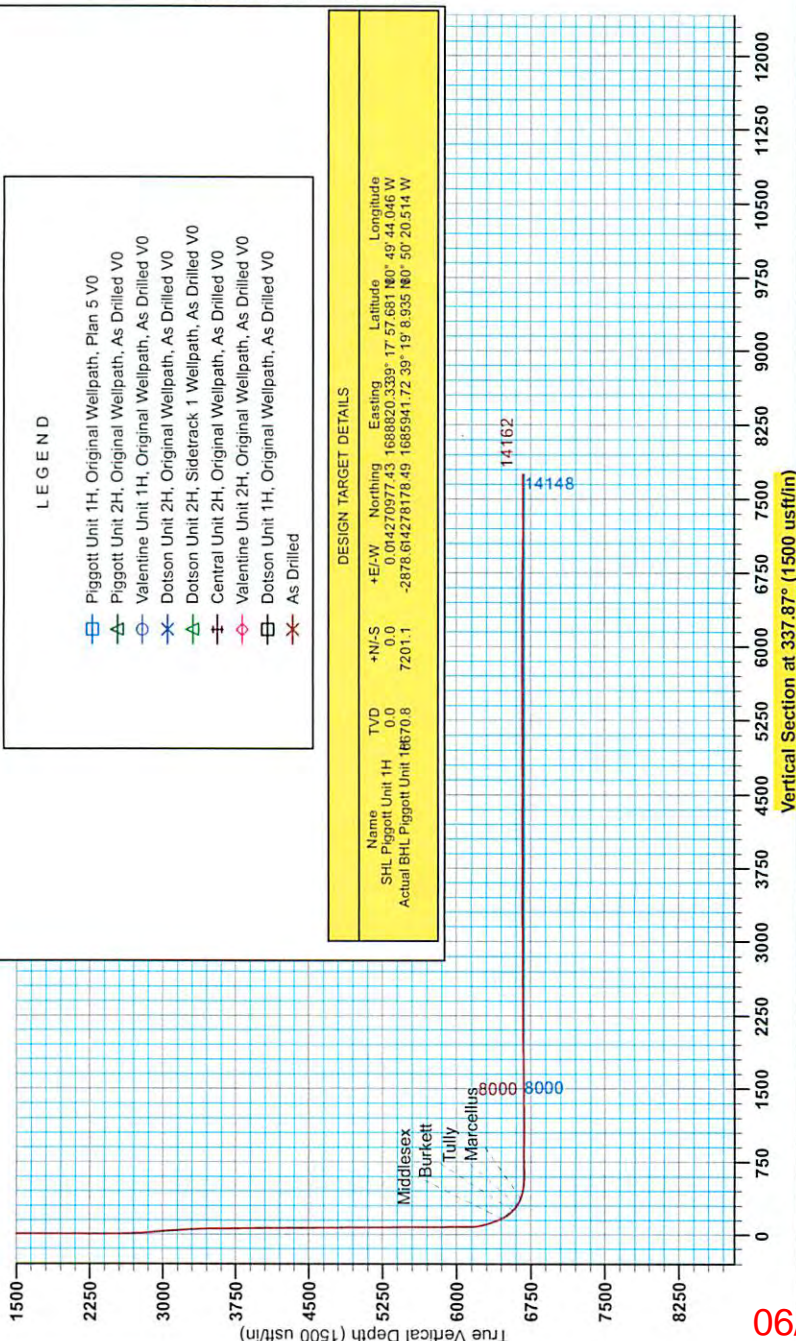


Genie Lightfoot
 14:59, February 21 2014
 Scientific Drilling
 421 South Eagle Lane
 Oklahoma City, OK

- LEGEND**
- Piggott Unit 1H, Original Wellpath, Plan 5 V0
 - △ Piggott Unit 2H, Original Wellpath, As Drilled V0
 - Valentine Unit 1H, Original Wellpath, As Drilled V0
 - × Dolson Unit 2H, Original Wellpath, As Drilled V0
 - ◇ Central Unit 2H, Sideltrack 1 Wellpath, As Drilled V0
 - ⊕ Valentine Unit 2H, Original Wellpath, As Drilled V0
 - ⊖ Dolson Unit 1H, Original Wellpath, As Drilled V0
 - ✖ As Drilled

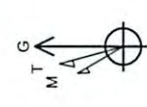
DESIGN TARGET DETAILS

Name	TVD	+N/S	+E/W	Northing	Easting	Latitude	Longitude
SHL Piggott Unit 1H	0.0	0.0	0.0	14270977.43	1688820.3399	39° 17' 57.061" N	80° 49' 44.046" W
Actual BHL Piggott Unit 1H	16670.8	7201.1	-2878.6	14278178.49	16885941.72	39° 19' 8.935" N	80° 50' 20.514" W



To convert Magnetic North to Grid, Subtract 8.52°
 To convert True North to Grid, Subtract 0.11°

Magnetic Field
 Strength: 52303.35nT
 Dip Angle: 66.89°
 Date: 9/24/2013
 Model: IGRF2010



06/05/2015

RECEIVED
 Office of Oil and Gas

MAY 18 2015

WV Department of
 Environmental Protection



Antero Resources

Doddridge County WV
Valentine/Dotson/Piggott/Shale Pad
Piggott Unit 1H
Original Wellpath

Design: As Drilled

EOW Completion Report

21 February, 2014

RECEIVED
Office of Oil and Gas

MAY 18 2015

WV Department of
Environmental Protection



06/05/2015

Company:	Antero Resources	Local Co-ordinate Reference:	Well Piggott Unit 1H
Project:	Doddridge County WV	TVD Reference:	Piggott 1H 1146 GL + 18 KB @ 1164.0usft
Site:	Valentine/Dotson/Piggott/Shale Pad	MD Reference:	Piggott 1H 1146 GL + 18 KB @ 1164.0usft
Well:	Piggott Unit 1H	North Reference:	Grid
Wellbore:	Original Wellpath	Survey Calculation Method:	Minimum Curvature
Design:	As Drilled	Database:	Oklahoma District

Project	Doddridge County WV, McClellan District		
Map System:	Universal Transverse Mercator (US Survey Fee	System Datum:	Mean Sea Level
Geo Datum:	NAD 1927 (NADCON CONUS)		
Map Zone:	Zone 17N (84 W to 78 W)		

Site	Valentine/Dotson/Piggott/Shale Pad				
Site Position:		Northing:	14,270,970.12 usft	Latitude:	39° 17' 57.609 N
From:	Map	Easting:	1,688,801.46 usft	Longitude:	80° 49' 44.286 W
Position Uncertainty:	2.0 usft	Slot Radius:	13-3/16"	Grid Convergence:	0.11 °

Well	Piggott Unit 1H					
Well Position	+N/-S	0.0 usft	Northing:	14,270,977.43 usft	Latitude:	39° 17' 57.681 N
	+E/-W	0.0 usft	Easting:	1,688,820.33 usft	Longitude:	80° 49' 44.046 W
Position Uncertainty	2.0 usft		Wellhead Elevation:	1,164.0 usft	Ground Level:	1,146.0 usft

Wellbore	Original Wellpath
-----------------	-------------------

Magnetics	Model Name	Sample Date	Declination (°)	Dip Angle (°)	Field Strength (nT)
	IGRF2010	9/24/2013	-8.41	66.89	52,393

Design	As Drilled
---------------	------------

Audit Notes:					
Version:	1.0	Phase:	ACTUAL	Tie On Depth:	0.0
Vertical Section:	Depth From (TVD) (usft)	+N/-S (usft)	+E/-W (usft)	Direction (°)	
	0.0	0.0	0.0	337.87	

Survey Program	Date 2/21/2014				
From (usft)	To (usft)	Survey (Wellbore)	Tool Name	Description	
105.0	6,110.5	Survey #4 Def Gyro to KOP (Original Well	SDI Standard Keeper	Scientific Drilling Intl. Standard Wireline Keeper	
6,127.0	14,162.0	Survey #5 MWD (Original Wellpath)	MWD SDI	MWD - Standard ver 1.0.1	

MD (usft)	Inc (°)	Azi (azimuth) (°)	TVD (usft)	N/S (usft)	E/W (usft)	V. Sec (usft)	DLeg (°/100usft)
0.0	0.00	0.00	0.0	0.0	0.0	0.0	0.00
105.0	0.90	3.72	105.0	0.8	0.1	0.7	0.86
205.0	1.26	347.01	205.0	2.7	-0.1	2.5	0.47
305.0	0.49	355.25	305.0	4.2	-0.4	4.0	0.78
405.0	0.35	9.20	405.0	4.9	-0.4	4.7	0.17
505.0	0.38	36.13	505.0	5.5	-0.2	5.1	0.17
605.0	0.51	50.59	605.0	6.0	0.4	5.4	0.17
705.0	0.70	47.77	705.0	6.7		5.8	0.19
805.0	0.63	55.77	804.9	7.4		6.1	0.12
905.0	0.46	37.68	904.9	8.1		6.4	0.24
1,005.0	0.30	42.08	1,004.9	8.6		6.7	0.16

RECEIVED
Office of Oil and Gas
MAY 18 2015

Company:	Antero Resources	Local Co-ordinate Reference:	Well Piggott Unit 1H
Project:	Doddridge County WV	TVD Reference:	Piggott 1H 1146 GL + 18 KB @ 1164.0usft
Site:	Valentine/Dotson/Piggott/Shale Pad	MD Reference:	Piggott 1H 1146 GL + 18 KB @ 1164.0usft
Well:	Piggott Unit 1H	North Reference:	Grid
Wellbore:	Original Wellpath	Survey Calculation Method:	Minimum Curvature
Design:	As Drilled	Database:	Oklahoma District

Survey									
MD (usft)	Inc (°)	Azi (azimuth) (°)	TVD (usft)	N/S (usft)	E/W (usft)	V. Sec (usft)	DLeg (°/100usft)		
1,105.0	0.25	46.44	1,104.9	8.9	3.5	6.9	0.05		
1,205.0	0.26	73.09	1,204.9	9.1	3.9	7.0	0.12		
1,305.0	0.16	58.25	1,304.9	9.3	4.2	7.0	0.11		
1,405.0	0.14	69.06	1,404.9	9.4	4.5	7.0	0.03		
1,505.0	0.12	59.38	1,504.9	9.5	4.7	7.0	0.03		
1,605.0	0.04	356.18	1,604.9	9.6	4.8	7.1	0.11		
1,705.0	0.15	104.91	1,704.9	9.6	4.9	7.0	0.17		
1,805.0	0.08	14.02	1,804.9	9.6	5.0	7.0	0.17		
1,905.0	0.25	102.51	1,904.9	9.6	5.3	6.9	0.26		
2,005.0	0.17	132.25	2,004.9	9.5	5.6	6.7	0.13		
2,105.0	0.11	90.47	2,104.9	9.4	5.8	6.5	0.11		
2,205.0	0.18	13.35	2,204.9	9.5	5.9	6.6	0.19		
2,305.0	0.24	31.31	2,304.9	9.9	6.1	6.9	0.09		
2,405.0	0.26	358.15	2,404.9	10.3	6.2	7.2	0.14		
2,505.0	0.26	8.60	2,504.9	10.7	6.2	7.6	0.05		
2,605.0	1.01	298.77	2,604.9	11.4	5.5	8.5	0.95		
2,705.0	4.96	285.24	2,704.8	12.9	0.5	11.8	3.99		
2,805.0	7.74	279.25	2,804.1	15.2	-10.3	17.9	2.85		
2,905.0	7.09	287.99	2,903.3	18.1	-22.8	25.4	1.30		
3,005.0	6.58	298.05	3,002.6	22.7	-33.8	33.8	1.30		
3,105.0	6.18	297.17	3,102.0	27.9	-43.6	42.3	0.41		
3,205.0	3.98	304.35	3,201.6	32.3	-51.3	49.2	2.29		
3,305.0	2.36	310.59	3,301.4	35.6	-55.7	54.0	1.65		
3,405.0	1.73	316.45	3,401.4	38.0	-58.3	57.2	0.66		
3,505.0	1.19	318.29	3,501.3	39.9	-60.0	59.6	0.54		
3,605.0	0.90	322.07	3,601.3	41.3	-61.2	61.3	0.30		
3,705.0	0.94	325.52	3,701.3	42.6	-62.1	62.9	0.07		
3,805.0	0.67	327.15	3,801.3	43.8	-62.9	64.2	0.27		
3,905.0	0.67	331.47	3,901.3	44.8	-63.5	65.4	0.05		
4,005.0	0.58	343.81	4,001.3	45.8	-63.9	66.5	0.16		
4,105.0	0.52	359.10	4,101.3	46.7	-64.1	67.4	0.16		
4,205.0	0.45	7.87	4,201.3	47.6	-64.0	68.2	0.10		
4,305.0	0.49	7.28	4,301.3	48.4	-63.9	68.9	0.04		
4,405.0	0.57	7.13	4,401.3	49.3	-63.8	69.7	0.08		
4,505.0	0.48	14.91	4,501.3	50.2	-63.6	70.5	0.11		
4,605.0	0.70	12.46	4,601.3	51.2	-63.4	71.3	0.22		
4,705.0	0.44	21.67	4,701.3	52.1	-63.1	72.1	0.27		
4,805.0	0.59	20.51	4,801.2	53.0	-62.8	72.7	0.15		
4,905.0	0.51	20.11	4,901.2	53.9	-62.5	73.4	0.08		
5,005.0	0.59	29.27	5,001.2	54.7	-62.1	74.1	0.12		
5,105.0	0.51	14.13	5,101.2	55.6	-61.7	74.8	0.17		
5,205.0	0.50	19.74	5,201.2	56.5	-61.7	75.5	0.05		
5,305.0	0.36	21.48	5,301.2	57.0	-61.2	76.0	0.14		
5,405.0	0.29	10.12	5,401.2	57.7	-61.2	76.5	0.09		

RECEIVED
Office of Oil and Gas
MAY 18 2015



EOW Completion Report



Company:	Antero Resources	Local Co-ordinate Reference:	Well Piggott Unit 1H
Project:	Doddridge County WV	TVD Reference:	Piggott 1H 1146 GL + 18 KB @ 1164.0usft
Site:	Valentine/Dotson/Piggott/Shale Pad	MD Reference:	Piggott 1H 1146 GL + 18 KB @ 1164.0usft
Well:	Piggott Unit 1H	North Reference:	Grid
Wellbore:	Original Wellpath	Survey Calculation Method:	Minimum Curvature
Design:	As Drilled	Database:	Oklahoma District

Survey								
MD (usft)	Inc (°)	Azi (azimuth) (°)	TVD (usft)	N/S (usft)	E/W (usft)	V. Sec (usft)	DLeg (°/100usft)	
5,505.0	0.39	0.19	5,501.2	58.3	-61.0	77.0	0.12	
5,605.0	0.48	357.84	5,601.2	59.1	-61.0	77.7	0.09	
5,705.0	0.29	3.73	5,701.2	59.7	-61.0	78.3	0.19	
5,805.0	0.35	8.79	5,801.2	60.3	-60.9	78.8	0.07	
5,905.0	0.28	349.93	5,901.2	60.8	-60.9	79.3	0.12	
6,005.0	0.35	338.21	6,001.2	61.4	-61.1	79.8	0.09	
6,105.0	0.22	356.55	6,101.2	61.8	-61.2	80.3	0.16	
6,110.5	0.22	358.75	6,106.8	61.9	-61.2	80.4	0.15	
6,127.0	0.31	333.88	6,123.2	61.9	-61.2	80.4	0.88	
6,158.0	2.06	1.21	6,154.2	62.6	-61.3	81.0	5.78	
6,189.0	5.77	9.70	6,185.1	64.7	-61.0	82.9	12.08	
6,220.0	10.16	11.29	6,215.8	68.9	-60.2	86.5	14.18	
6,251.0	12.47	9.72	6,246.2	74.9	-59.1	91.6	7.52	
6,281.0	15.07	3.75	6,275.4	81.9	-58.3	97.9	9.87	
6,312.0	17.88	359.72	6,305.1	90.7	-58.0	105.9	9.78	
6,343.0	19.62	358.15	6,334.4	100.7	-58.2	115.2	5.84	
6,374.0	20.65	357.05	6,363.5	111.3	-58.7	125.2	3.54	
6,405.0	22.07	356.00	6,392.4	122.6	-59.4	135.9	4.74	
6,436.0	23.48	354.55	6,421.0	134.6	-60.4	147.4	4.90	
6,467.0	25.97	352.09	6,449.1	147.4	-61.9	159.9	8.69	
6,485.0	28.16	351.33	6,465.2	155.5	-63.1	167.8	12.30	
Middlesex								
6,498.0	29.74	350.85	6,476.6	161.8	-64.0	174.0	12.30	
6,529.0	33.75	349.90	6,502.9	177.8	-66.8	189.9	13.04	
6,559.0	37.88	347.81	6,527.2	195.1	-70.2	207.1	14.36	
6,590.0	42.34	345.99	6,550.9	214.5	-74.7	226.8	14.87	
6,621.0	46.80	344.34	6,573.0	235.5	-80.3	248.4	14.86	
6,623.0	47.09	344.26	6,574.4	236.9	-80.7	249.9	14.98	
Burkett								
6,652.0	51.36	343.17	6,593.3	258.0	-86.9	271.7	14.98	
6,683.0	55.90	343.20	6,611.7	281.9	-94.1	296.6	14.65	
6,689.0	56.72	343.24	6,615.0	286.7	-95.5	301.5	13.69	
Tully								
6,714.0	60.14	343.41	6,628.1	307.1	-101.6	322.7	13.69	
6,745.0	64.90	342.91	6,642.4	333.4	-109.6	350.1	15.42	
6,770.0	69.00	342.28	6,652.2	355.3	-116.5	373.0	16.58	
Marcellus								
6,776.0	69.99	342.13	6,654.3	360.7	-118.2	378.6	16.58	
6,806.0	74.71	341.70	6,663.4	387.8	-127.1	407.1	15.79	
6,837.0	77.69	341.10	6,670.8	416.4	-136.7	437.2	9.79	
6,868.0	80.28	340.56	6,676.7	445.1	-146.7	467.6	8.53	
6,899.0	84.06	340.39	6,680.9	474.0	-156.9	498.2	12.21	
6,929.0	85.38	339.16	6,683.7	502.1	-167.3	528.1	6.00	
6,960.0	85.74	338.89	6,686.1	530.9	-178.3	559.0	1.45	
6,991.0	85.94	338.95	6,688.3	559.8	-189.4	589.9	0.67	

RECEIVED
Office of Oil and Gas
MAY 18 2015

Company:	Antero Resources	Local Co-ordinate Reference:	Well Piggott Unit 1H
Project:	Doddridge County WV	TVD Reference:	Piggott 1H 1146 GL + 18 KB @ 1164.0usft
Site:	Valentine/Dotson/Piggott/Shale Pad	MD Reference:	Piggott 1H 1146 GL + 18 KB @ 1164.0usft
Well:	Piggott Unit 1H	North Reference:	Grid
Wellbore:	Original Wellpath	Survey Calculation Method:	Minimum Curvature
Design:	As Drilled	Database:	Oklahoma District

MD (usft)	Inc (°)	Azi (azimuth) (°)	TVD (usft)	N/S (usft)	E/W (usft)	V. Sec (usft)	DLeg (°/100usft)
7,022.0	87.58	338.37	6,690.1	588.6	-200.7	620.9	5.61
7,053.0	91.10	338.63	6,690.4	617.5	-212.1	651.9	11.39
7,115.0	92.95	338.28	6,688.3	675.1	-234.8	713.8	3.04
7,207.0	90.66	337.40	6,685.4	760.2	-269.5	805.8	2.67
7,300.0	91.01	337.40	6,684.0	846.1	-305.2	898.7	0.38
7,392.0	88.46	336.17	6,684.4	930.6	-341.5	990.7	3.08
7,485.0	88.64	336.43	6,686.8	1,015.8	-378.9	1,083.6	0.34
7,578.0	90.40	338.28	6,687.6	1,101.6	-414.7	1,176.6	2.75
7,670.0	90.84	339.16	6,686.6	1,187.3	-448.1	1,268.6	1.07
7,763.0	91.45	337.40	6,684.7	1,273.7	-482.5	1,361.6	2.00
7,856.0	89.78	335.99	6,683.7	1,359.1	-519.2	1,454.6	2.35
7,948.0	90.22	336.70	6,683.7	1,443.3	-556.2	1,546.5	0.91
8,041.0	90.40	334.32	6,683.2	1,528.0	-594.7	1,639.4	2.57
8,133.0	90.48	337.05	6,682.5	1,611.8	-632.6	1,731.4	2.97
8,226.0	91.28	336.87	6,681.1	1,697.4	-669.0	1,824.3	0.88
8,319.0	90.75	340.83	6,679.4	1,784.1	-702.5	1,917.3	4.30
8,411.0	91.36	340.56	6,677.7	1,870.9	-732.9	2,009.2	0.73
8,504.0	90.22	335.90	6,676.4	1,957.2	-767.4	2,102.1	5.16
8,596.0	90.57	337.57	6,675.8	2,041.7	-803.7	2,194.1	1.85
8,689.0	91.19	336.96	6,674.4	2,127.5	-839.7	2,287.1	0.94
8,782.0	89.69	332.65	6,673.7	2,211.6	-879.3	2,379.9	4.91
8,874.0	88.90	337.75	6,674.8	2,295.1	-917.8	2,471.8	5.61
8,967.0	90.84	341.00	6,675.0	2,382.1	-950.6	2,564.7	4.07
9,060.0	90.75	340.04	6,673.7	2,469.8	-981.6	2,657.6	1.04
9,152.0	91.45	342.23	6,672.0	2,556.8	-1,011.3	2,749.5	2.50
9,245.0	89.16	340.21	6,671.5	2,644.9	-1,041.3	2,842.3	3.28
9,338.0	89.60	341.53	6,672.5	2,732.7	-1,071.8	2,935.1	1.50
9,430.0	89.60	341.27	6,673.1	2,819.9	-1,101.1	3,027.0	0.28
9,523.0	91.45	341.62	6,672.3	2,908.1	-1,130.7	3,119.8	2.02
9,616.0	91.36	338.98	6,670.0	2,995.6	-1,162.0	3,212.7	2.84
9,708.0	88.99	334.06	6,669.7	3,079.9	-1,198.7	3,304.6	5.94
9,801.0	89.25	332.92	6,671.1	3,163.2	-1,240.2	3,397.3	1.26
9,893.0	90.57	335.82	6,671.3	3,246.1	-1,280.0	3,489.1	3.46
9,986.0	91.28	335.73	6,669.8	3,330.9	-1,318.1	3,582.1	0.77
10,078.0	90.04	338.19	6,668.7	3,415.5	-1,354.1	3,674.0	2.99
10,171.0	90.66	340.30	6,668.1	3,502.5	-1,387.1	3,767.0	2.36
10,264.0	91.36	338.80	6,666.5	3,589.6	-1,419.6	3,859.9	1.78
10,356.0	90.22	338.19	6,665.2	3,675.2	-1,453.3	3,951.9	1.41
10,449.0	90.40	335.90	6,664.7	3,760.8	-1,489.5	4,044.9	2.47
10,541.0	89.60	334.15	6,664.7	3,844.2	-1,528.4	4,136.8	2.09
10,634.0	90.04	335.29	6,665.0	3,928.3	-1,568.1	4,229.6	1.31
10,727.0	88.81	340.12	6,666.0	4,014.3	-1,603.3	4,322.6	5.36
10,819.0	88.64	339.77	6,668.0	4,100.7	-1,634.9	4,414.5	0.42
10,912.0	90.22	339.60	6,668.9	4,187.9	-1,667.2	4,507.5	1.71

RECEIVED
Office of Oil and Gas
MAY 18 2015
WV Department of
Environmental Protection



EOW Completion Report



Company:	Antero Resources	Local Co-ordinate Reference:	Well Piggott Unit 1H
Project:	Doddridge County WV	TVD Reference:	Piggott 1H 1146 GL + 18 KB @ 1164.0usft
Site:	Valentine/Dotson/Piggott/Shale Pad	MD Reference:	Piggott 1H 1146 GL + 18 KB @ 1164.0usft
Well:	Piggott Unit 1H	North Reference:	Grid
Wellbore:	Original Wellpath	Survey Calculation Method:	Minimum Curvature
Design:	As Drilled	Database:	Oklahoma District

MD (usft)	Inc (°)	Azi (azimuth) (°)	TVD (usft)	N/S (usft)	E/W (usft)	V. Sec (usft)	DLeg (°/100usft)
11,004.0	91.19	339.07	6,667.8	4,274.0	-1,699.7	4,599.4	1.20
11,097.0	90.31	337.66	6,666.6	4,360.5	-1,733.9	4,692.4	1.79
11,190.0	90.31	336.26	6,666.1	4,446.0	-1,770.3	4,785.4	1.51
11,282.0	89.16	332.21	6,666.5	4,528.9	-1,810.3	4,877.2	4.58
11,375.0	89.25	334.76	6,667.8	4,612.1	-1,851.8	4,969.9	2.74
11,467.0	90.66	336.08	6,667.9	4,695.7	-1,890.1	5,061.8	2.10
11,560.0	90.75	335.90	6,666.7	4,780.7	-1,927.9	5,154.8	0.22
11,652.0	89.34	338.01	6,666.6	4,865.3	-1,964.0	5,246.7	2.76
11,746.0	90.04	340.74	6,667.2	4,953.3	-1,997.1	5,340.7	3.00
11,841.0	90.57	341.35	6,666.6	5,043.1	-2,027.9	5,435.6	0.85
11,936.0	89.70	338.83	6,666.4	5,132.5	-2,060.3	5,530.5	2.81
12,031.0	90.31	337.40	6,666.4	5,220.6	-2,095.7	5,625.5	1.64
12,126.0	89.60	337.66	6,666.5	5,308.4	-2,132.0	5,720.5	0.80
12,220.0	89.96	336.34	6,666.9	5,394.9	-2,168.7	5,814.5	1.46
12,315.0	89.52	340.65	6,667.3	5,483.3	-2,203.5	5,909.4	4.56
12,410.0	89.16	339.33	6,668.4	5,572.5	-2,236.0	6,004.4	1.44
12,505.0	90.13	340.30	6,669.0	5,661.7	-2,268.8	6,099.3	1.44
12,600.0	91.10	340.65	6,667.9	5,751.2	-2,300.6	6,194.2	1.09
12,694.0	90.48	340.91	6,666.7	5,840.0	-2,331.5	6,288.1	0.72
12,789.0	91.10	339.16	6,665.3	5,929.3	-2,363.9	6,383.0	1.95
12,882.0	88.72	336.17	6,665.5	6,015.3	-2,399.3	6,476.0	4.11
12,975.0	89.43	336.78	6,667.0	6,100.5	-2,436.4	6,568.9	1.01
13,067.0	89.69	335.64	6,667.7	6,184.7	-2,473.5	6,660.9	1.27
13,160.0	90.04	333.18	6,667.9	6,268.6	-2,513.7	6,753.7	2.67
13,252.0	88.81	335.82	6,668.8	6,351.6	-2,553.3	6,845.5	3.17
13,345.0	88.53	338.41	6,671.0	6,437.3	-2,589.4	6,938.5	2.80
13,437.0	89.25	337.66	6,672.8	6,522.6	-2,623.8	7,030.5	1.13
13,530.0	88.72	337.75	6,674.4	6,608.6	-2,659.1	7,123.5	0.58
13,622.0	90.31	339.86	6,675.2	6,694.4	-2,692.4	7,215.4	2.87
13,715.0	91.24	341.50	6,673.9	6,782.1	-2,723.1	7,308.3	2.03
13,745.0	90.48	341.62	6,673.5	6,810.6	-2,732.6	7,338.2	2.56
13,808.0	90.75	341.09	6,672.8	6,870.3	-2,752.7	7,401.1	0.94
13,900.0	90.84	339.68	6,671.5	6,956.9	-2,783.6	7,493.0	1.54
13,993.0	90.22	338.63	6,670.7	7,043.8	-2,816.7	7,586.0	1.31
14,085.0	89.60	338.28	6,670.8	7,129.4	-2,850.5	7,678.0	0.77
14,104.0	90.04	338.63	6,670.9	7,147.1	-2,857.5	7,697.0	2.96
14,162.0	90.04	338.63	6,670.8	7,201.1	-2,878.6	7,755.0	0.00

RECEIVED
Office of Oil and Gas

MAY 18 2015

WV Department of
Environmental Protection



Company:	Antero Resources	Local Co-ordinate Reference:	Well Piggott Unit 1H
Project:	Doddridge County WV	TVD Reference:	Piggott 1H 1146 GL + 18 KB @ 1164.0usft
Site:	Valentine/Dotson/Piggott/Shale Pad	MD Reference:	Piggott 1H 1146 GL + 18 KB @ 1164.0usft
Well:	Piggott Unit 1H	North Reference:	Grid
Wellbore:	Original Wellpath	Survey Calculation Method:	Minimum Curvature
Design:	As Drilled	Database:	Oklahoma District

Design Annotations

Measured Depth (usft)	Vertical Depth (usft)	Local Coordinates		Comment
		+N/-S (usft)	+E/-W (usft)	
6,485.0	6,465.2	155.5	-63.1	Middlesex
6,623.0	6,574.4	236.9	-80.7	Burkett
6,689.0	6,615.0	286.7	-95.5	Tully
6,770.0	6,652.2	355.3	-116.5	Marcellus

Checked By: _____ Approved By: _____ Date: _____

RECEIVED
Office of Oil and Gas

MAY 18 2015

WV Department of
Environmental Protection