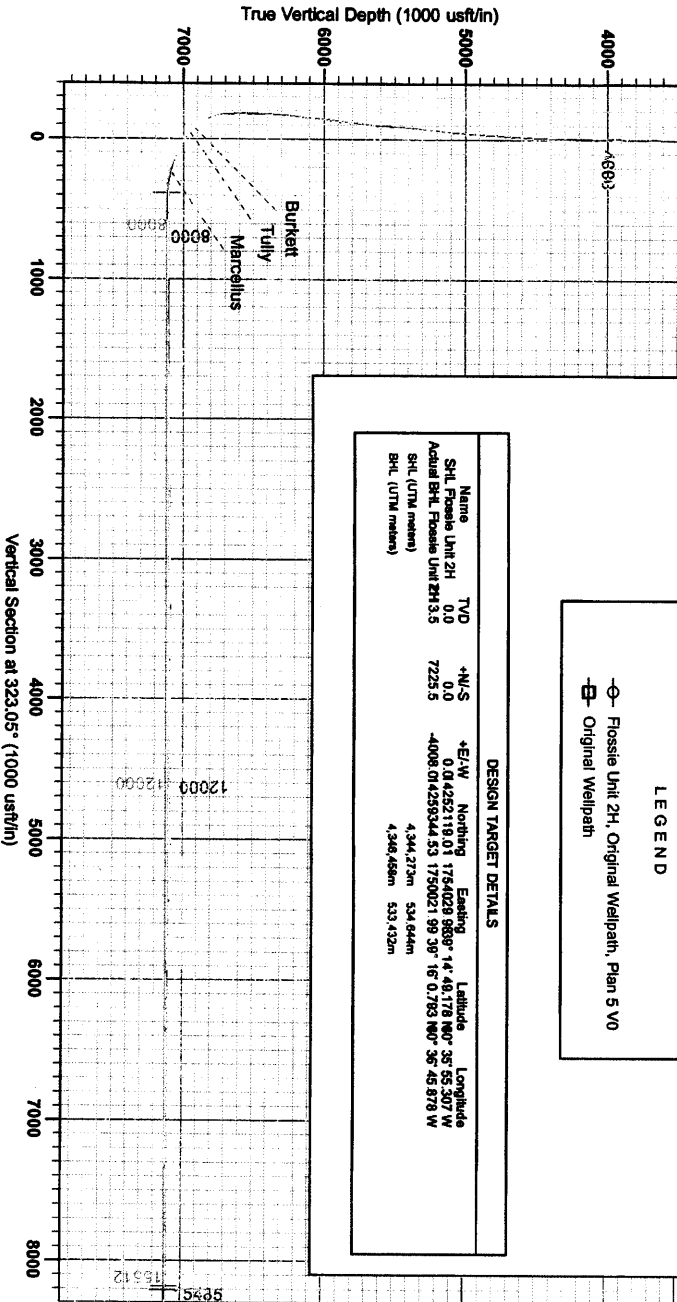


470176644



Antero Resources
Fossile Unit 2H
Doddridge County WV
Northing: 1425219.01
Easting: 1754029.98
Original Wellpath



WELL DETAIL S: Fossile Unit 2H

Ground Level:	971.0	Soil:	
N-S:	0.0	Northing:	1425219.01
E-W:	0.0	Easting:	1754029.98
		Latitude:	39° 55' 30.7" W
		Longitude:	148° 17' 3" N

PROJECT DETAIL S: Doddridge County WV

Geologic System: Unconformity Transgressive Mosaic (US Survey Feet)
 Ellipsoid: Clarke 1866
 Zone: Zone 17N (64 W to 78 W)
 System Datum: Mean Sea Level

REFERENCE INFORMATION

Coordinate (NAD) Reference: Well Point Unit 2H, Original Wellpath
 Vertical (NAD) Reference: Fossile Unit 2H, Original Wellpath
 Horizontal (NAD) Reference: Fossile Unit 2H, Original Wellpath
 National Datum Reference: Fossile Unit 2H, Original Wellpath
 Coordinate System: Survey Coordinates

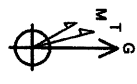
LEGEND

- Fossile Unit 2H, Original Wellpath, Plan 5 VO
- ⊖ Original Wellpath

DESIGN TARGET DETAILS

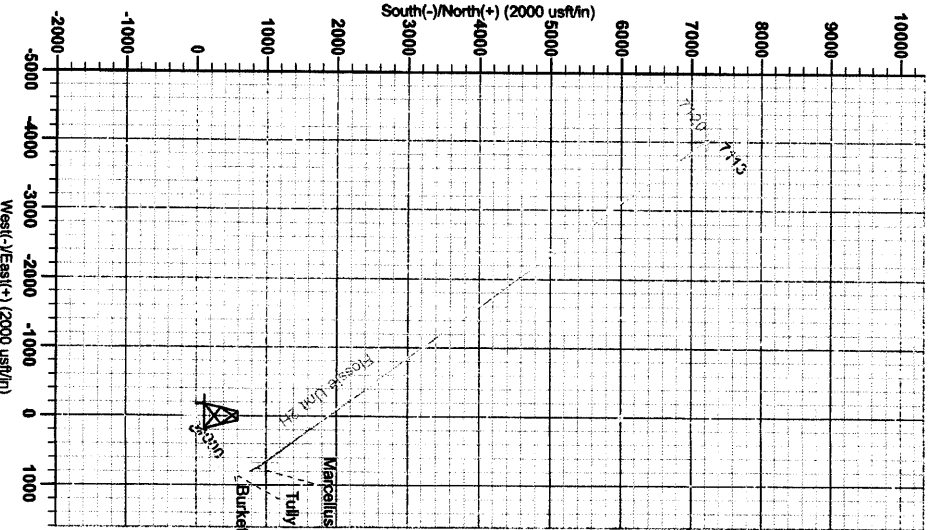
Name	TVD	+N/S	+E/W	Northing	Easting	Latitude	Longitude
SHT Fossile Unit 2H	0.0	0.0	0.0	1425219.01	1754029.98	39° 55' 30.7" W	148° 17' 3" N
Actual BHT, Fossile Unit 2H	3.5	7225.5	4008.0	14259344.53	1750021.99	39° 16' 0.753" N	36° 45' 57.8" W
BHT (UTM meters)			4,344.27m		534.644m		
BHT (UTM meters)			4,346.46m		533.432m		

Genie Lightfoot
 15:39, September 08 2013
 Scientific Drilling
 421 South Eagle Lane
 Oklahoma City, OK



To convert Magnetic North to Grid, Subtract 3.89°
 To convert True North to Grid, Subtract 0.25°

Astronulls to Grid North
 Magnetic North: -3.89°
 Magnetic Field
 Strength: 63408.2nT
 Dip Angle: 66.61°
 Declination: -3.89°
 Model: IGRF2010



RECEIVED
DEC 16 2013
WV GEOLOGICAL SURVEY
MORGANTOWN, WV