

4701766153



Antero Resources  
 Webley Fork Unit 1H  
 Doddridge County WV  
 Northing: 14226986.06  
 Easting: 1722808.98  
 Original Wellpath

**WELL DETAILS: Webley Fork Unit 1H**

4N-5	4E-1W	Grid Level:	1227.0
0.0	0.0	Northing	17226986.06
		East	10 41.872 N60° 42 33.529 W
		Sci	

**REFERENCE INFORMATION**

Geographic NAD Reference: NAD 83  
 Wellbore Reference: Webley Fork Unit 1H  
 Wellbore ID: 421 SCL 1227  
 Wellbore Name: 421 SCL 1227  
 Wellbore Type: Oil  
 Wellbore Status: Active  
 Completion Method: Surface Completion

**PROJECT DETAILS: Doddridge County WV**

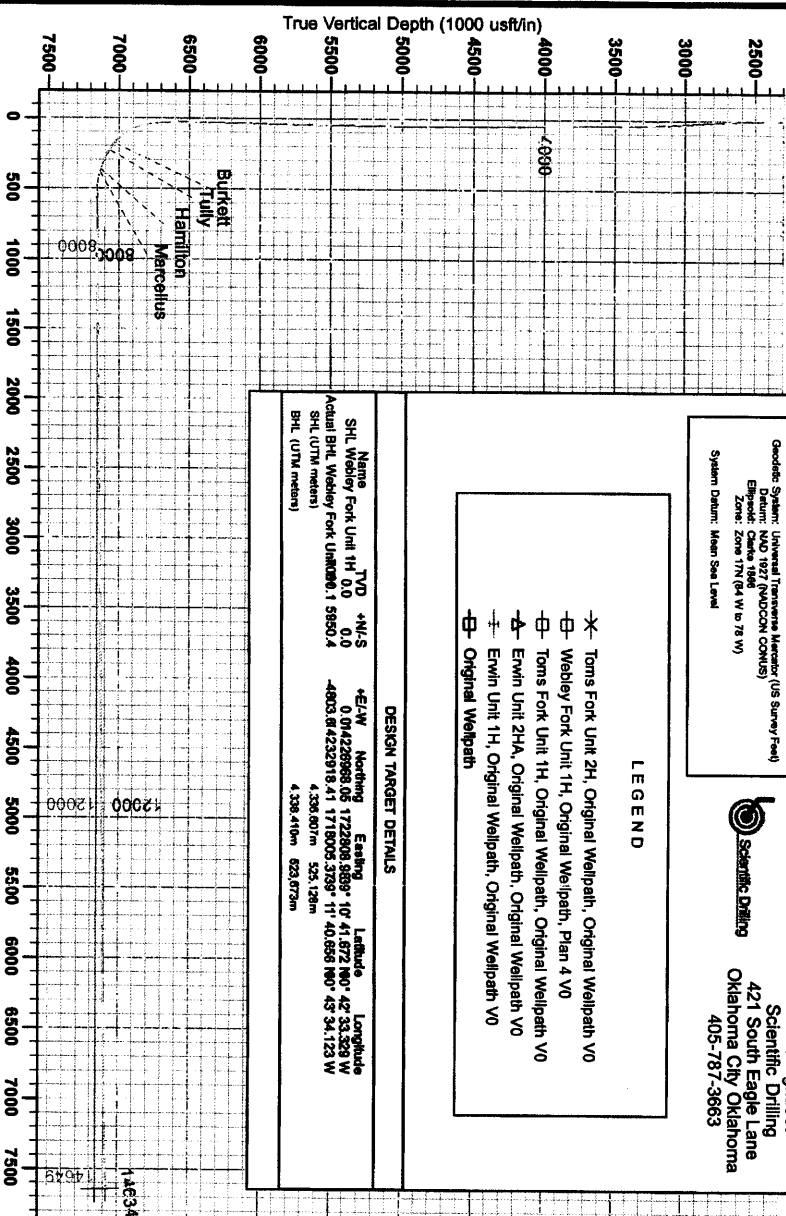
Geodetic System: Universal Transverse Mercator (US Survey Feet)  
 Datum: NAD 83  
 Ellipsoid: Clarke 1866  
 Zone: Zone 17N (64 W to 78 W)  
 System Datum: Mean Sea Level

Gentle Lightfoot  
 Scientific Drilling  
 421 South Eagle Lane  
 Oklahoma City, Oklahoma  
 405-787-3663

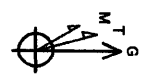
- LEGEND**
- \* Toms Fork Unit 2H, Original Wellpath, Original Wellpath V0
  - Webley Fork Unit 1H, Original Wellpath, Plan 4 V0
  - Toms Fork Unit 1H, Original Wellpath, Original Wellpath V0
  - △ Erwin Unit 2H4, Original Wellpath, Original Wellpath V0
  - ± Erwin Unit 1H, Original Wellpath, Original Wellpath V0
  - Original Wellpath

**DESIGN TARGET DETAILS**

Name	TVD	4N-5	4E-1W	Northing	Eastng	Latitude	Longitude
SHL Webley Fork Unit 1H 0.0	0.0	0.0	0.0	17226986.06	10 41.872 N60° 42 33.529 W	42 33.529 W	17226986.06
Actual SHL Webley Fork Unit 1H 1 8950.4	8950.4			1715005.529	11 40.059 N60° 43 34.123 W	43 34.123 W	1715005.529
SHL (UTM meters)				4,339.807m	523.129m		
BHL (UTM meters)				4,338.410m	623.672m		



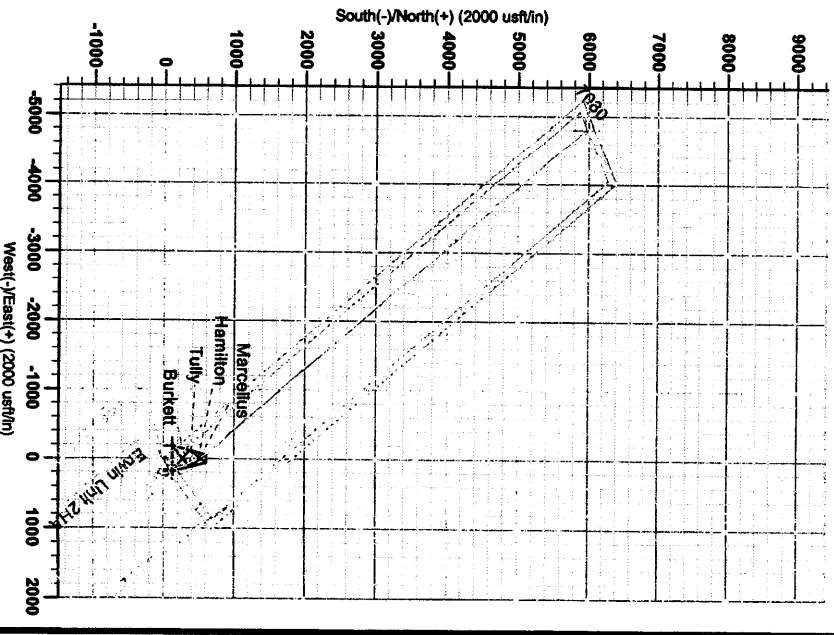
Vertical Section at 318.45° (1000 usft/in)



To convert Magnetic North to Grid, Subtract 8.63°  
 To convert True North to Grid, Subtract 0.18°

Adjusts to Grid North  
 True North: -0.18°  
 Magnetic North: -8.63°

Magnetic Field  
 Strength: 0.287 Gauss  
 Declination: 8.81°  
 Date: 3/28/2013  
 Model: IGRF2010



RECEIVED

JUN 3 2014

WV GEOLOGICAL SURVEY  
 MORGANTOWN, WV