

17-06157



Antero Resources
Little Tom Unit 1H
Doddridge County WV
Northing: 14226969.89
Easting: 1722798.95
As Drilled

WELL DETAILS: Little Tom Unit 1H

	Ground Level	1227.0			
+N/-S	+E/-W	Northing	Easting	Latitude	Longitude
0.0	0.0	14226969.89	1722798.9539° 10'	41.691 N80° 42'	33.457 W

REFERENCE INFORMATION

Co-ordinate (N/E) Reference: Well Little Tom Unit 1H, Grid North
 Vertical (TVD) Reference: Little Tom 1H 1227.0L + 25 KB @ 1252.0urst (Original Well Elev)
 Section (VS) Reference: Slot - (5.0N, 0.0E)
 Measured Depth Reference: Little Tom 1H 1227.0L + 25 KB @ 1252.0urst (Original Well Elev)
 Calculation Method: Minimum Curvature

PROJECT DETAILS: Doddridge County WV

Geodetic System: Universal Transverse Mercator (US Survey Feet)
 Datum: NAD 1927 (NADCON CONUS)
 Ellipsoid: Clarke 1866
 Zone: Zone 17N (84 W to 78 W)
 System Datum: Mean Sea Level



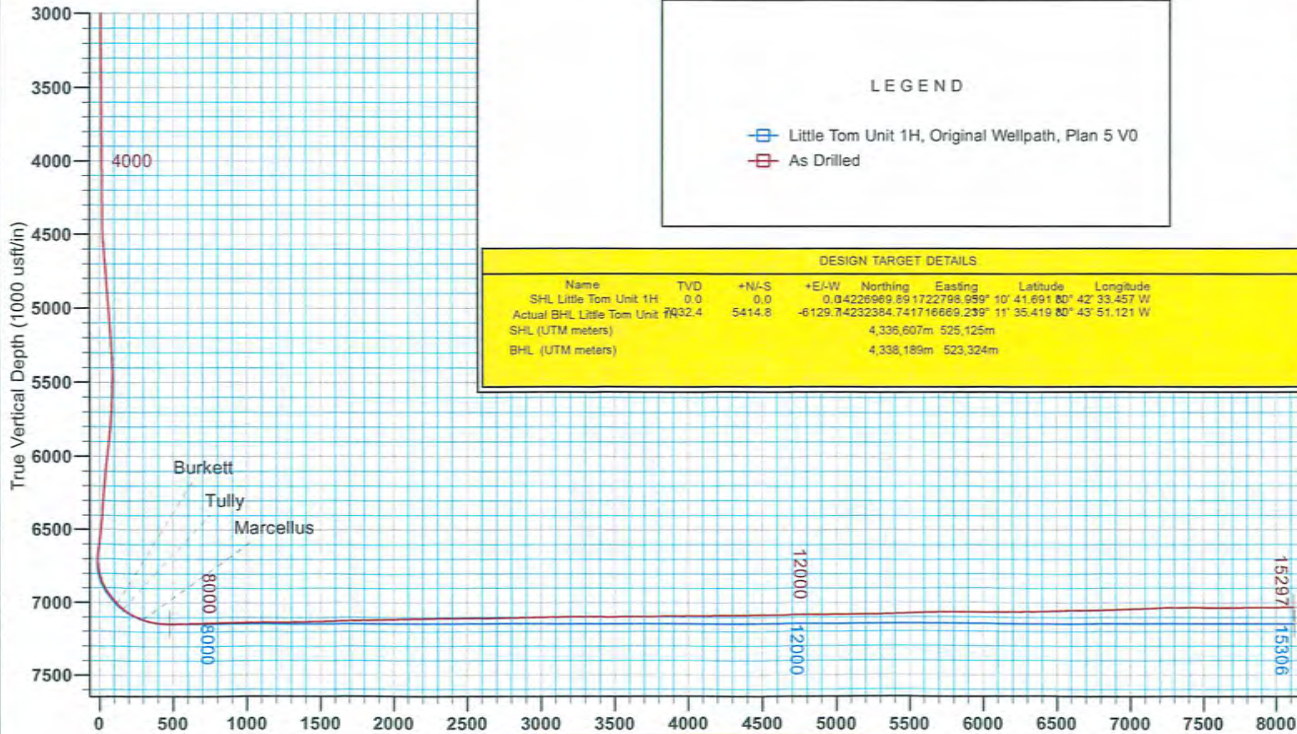
Genie Lightfoot
Scientific Drilling
 421 South Eagle Lane
 Oklahoma City Oklahoma
 405-787-3663

LEGEND

- Little Tom Unit 1H, Original Wellpath, Plan 5 V0
- As Drilled

DESIGN TARGET DETAILS

Name	TVD	+N/-S	+E/-W	Northing	Easting	Latitude	Longitude
SHL Little Tom Unit 1H	0.0	0.0	0.0	14226969.89	1722798.9539° 10'	41.691 N80° 42'	33.457 W
Actual BHL Little Tom Unit 1H	32.4	5414.8	-6129.7	74232384.74	1716669.239° 11'	35.419 N80° 43'	51.121 W
SHL (UTM meters)				4,336,607m	525,125m		
BHL (UTM meters)				4,336,189m	523,324m		



Vertical Section at 318.55° (1000 usft/m)



To convert Magnetic North to Grid, Subtract 8.64°
 To convert True North to Grid, Subtract 0.18°

Azimuths to Grid North
 True North: -0.18°
 Magnetic North: -8.64°
 Magnetic Field
 Strength: 52365.3nT
 Dip Angle: 66.52°
 Date: 5/2/2013
 Model: IGRF2010

