

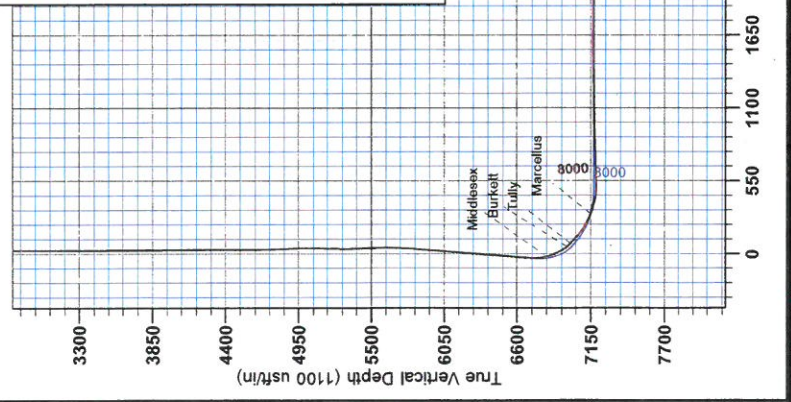
RECEIVED

JUL 27 2015

WV GEOLOGICAL SURVEY
MORGANTOWN, WV



Antero Resources
Oneacre Unit 2H
Doddridge County WV
Northing: 14251315.58
Easting: 1762656.18
As Drilled



Vertical Section at 129.00° (1100 usft/in)

WELL DETAILS: Oneacre Unit 2H

Northing	14251315.58	Longitude	80° 34' 5.668 W
Easting	1762656.18	Latitude	39° 14' 40.841 N
Ground Level	1050.0	Slot	

REFERENCE INFORMATION

Coordinates (NED) Reference: Well Oneacre Unit 2H, Grid North
 Vertical (VD) Reference: Oneacre Unit 2H 1050' GS, ± 25' FMS @ 1075' Quat
 Measured Depth Reference: Oneacre Unit 2H 1050' GS, ± 25' FMS @ 1075' Quat
 Calculation Method: Iteration Convergence
 System Datum: Mean Sea Level

Genie Lightfoot
10.44, February 13 2014
Scientific Drilling
421 South Eagle Lane
Oklahoma City, OK

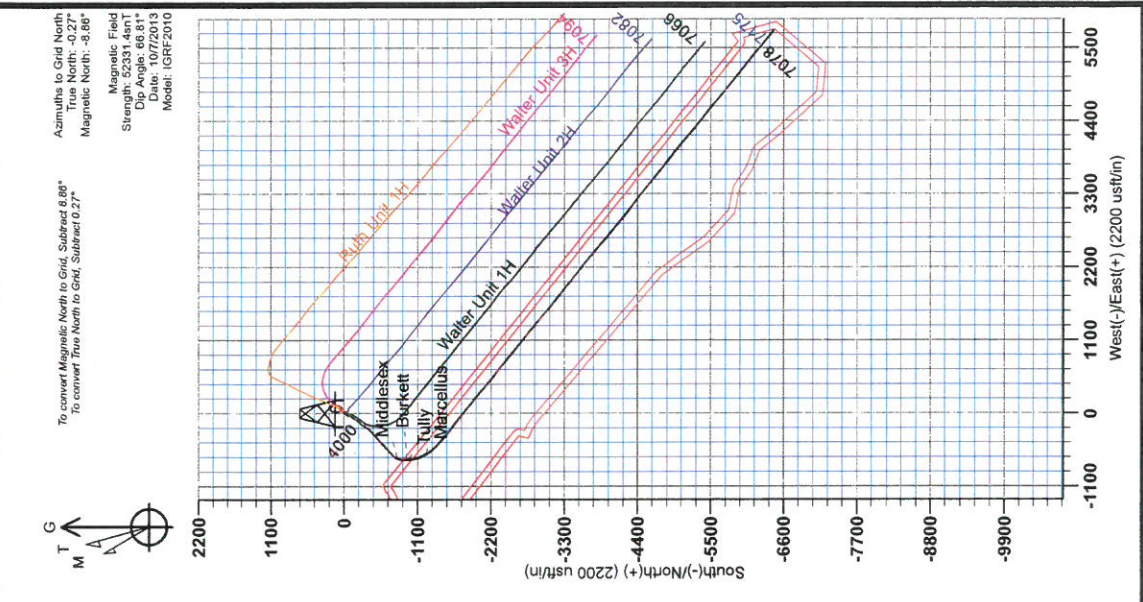


LEGEND

- ✖ Waiter Unit 3H, Original Wellpath, As Drilled V0
- ▲ Waiter Unit 1H, Original Wellpath, As Drilled V0
- △ Ruth Unit 1H, Original Wellpath, As Drilled V0
- ⊕ Waiter Unit 2H, Original Wellpath, As Drilled V0
- ⊖ Oneacre Unit 2H, Original Wellpath, Plan 3 V0
- ◇ As Drilled

DESIGN TARGET DETAILS

Name	TVD	+N/-S	+E/-W	Northing	Easting	Latitude	Longitude
SHL Oneacre Unit 2H	0.0	0.0	0.0	14251315.58	1762656.189	39° 14' 40.841 N	80° 34' 5.668 W
Actual BHL Oneacre Unit 2H077.8	0.0	-6443.3	5747.0	4244872.31	1768403.1659	36° 55' 40.327 N	80° 32' 53.004 W





RECEIVED
JUL 27 2015
WV GEOLOGICAL SURVEY
MORGANTOWN, WV

Antero Resources

**Doddridge County WV
Ruth/Walter/Caswell/Arters
Oneacre Unit 2H
Original Wellpath**

Design: As Drilled

EOW Completion Report

13 February, 2014





Company:	Antero Resources	Local Co-ordinate Reference:	Well Oneacre Unit 2H
Project:	Doddridge County WV	TVD Reference:	Oneacre Unit 2H 1050' GL + 25' RKB @ 1075.0us
Site:	Ruth/Walter/Caswell/Arters	MD Reference:	Oneacre Unit 2H 1050' GL + 25' RKB @ 1075.0us
Well:	Oneacre Unit 2H	North Reference:	Grid
Wellbore:	Original Wellpath	Survey Calculation Method:	Minimum Curvature
Design:	As Drilled	Database:	Oklahoma District

Project	Doddridge County WV, McClellan District		
Map System:	Universal Transverse Mercator (US Survey Fee	System Datum:	Mean Sea Level
Geo Datum:	NAD 1927 (NADCON CONUS)		
Map Zone:	Zone 17N (84 W to 78 W)		

Site	Ruth/Walter/Caswell/Arters, Center is Ruth Unit 1				
Site Position:		Northing:	14,251,337.29 usft	Latitude:	39° 14' 41.054 N
From:	Map	Easting:	1,762,689.77 usft	Longitude:	80° 34' 5.240 W
Position Uncertainty:	2.0 usft	Slot Radius:	13-3/16"	Grid Convergence:	0.27 °

Well	Oneacre Unit 2H, Marcellus					
Well Position	+N/-S	0.0 usft	Northing:	14,251,315.58 usft	Latitude:	39° 14' 40.841 N
	+E/-W	0.0 usft	Easting:	1,762,656.18 usft	Longitude:	80° 34' 5.668 W
Position Uncertainty	2.0 usft		Wellhead Elevation:	1,075.0 usft	Ground Level:	1,050.0 usft

Wellbore	Original Wellpath				
-----------------	-------------------	--	--	--	--

Magnetics	Model Name	Sample Date	Declination (°)	Dip Angle (°)	Field Strength (nT)
	IGRF2010	10/7/2013	-8.59	66.81	52,331

Design	As Drilled				
Audit Notes:					
Version:	1.0	Phase:	ACTUAL	Tie On Depth:	0.0
Vertical Section:	Depth From (TVD) (usft)	+N/-S (usft)	+E/-W (usft)	Direction (°)	
	0.0	0.0	0.0	129.00	

Survey Program	Date 2/13/2014				
From (usft)	To (usft)	Survey (Wellbore)	Tool Name	Description	
112.0	2,525.0	Survey #4 Final Gyro (Original Wellpath)	SDI Standard Keeper	Scientific Drilling Intl. Standard Wireline Keeper	
2,612.0	15,827.0	Survey #3 MWD (Original Wellpath)	SDI MWD	Scientific Drilling Intl. MWD - Standard ver 1.0.1	

Survey									
MD (usft)	Inc (°)	Azi (azimuth) (°)	TVD (usft)	N/S (usft)	E/W (usft)	V. Sec (usft)	DLeg (°/100usft)		
0.0	0.00	0.00	0.0	0.0	0.0	0.0	0.0	0.00	
112.0	0.35	359.39	112.0	0.3	0.0	-0.2	0.31		
212.0	0.20	105.02	212.0	0.6	0.2	-0.3	0.45		
312.0	0.38	131.90	312.0	0.3	0.6	0.2	0.22		
412.0	0.38	123.02	412.0	-0.1	1.1	0.9	0.06		
512.0	0.46	125.09	512.0	-0.5	1.7	1.6	0.08		
612.0	0.43	117.10	612.0	-0.9	2.4	2.4	0.07		
712.0	0.48	129.69	712.0	-1.3	3.0	3.2	0.11		
812.0	0.50	131.29	812.0	-1.9	3.7	4.0	0.02		
912.0	0.55	124.82	912.0	-2.4	4.4	5.0	0.08		
1,012.0	0.59	121.90	1,012.0	-3.0	5.2	5.9	0.05		

JUL 27 2015



EOW Completion Report



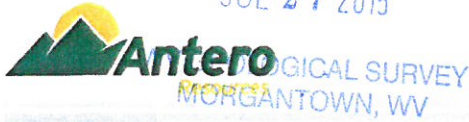
Company:	Antero Resources	Local Co-ordinate Reference:	Well Oneacre Unit 2H
Project:	Doddridge County WV	TVD Reference:	Oneacre Unit 2H 1050' GL + 25' RKB @ 1075.0us
Site:	Ruth/Walter/Caswell/Arters	MD Reference:	Oneacre Unit 2H 1050' GL + 25' RKB @ 1075.0us
Well:	Oneacre Unit 2H	North Reference:	Grid
Wellbore:	Original Wellpath	Survey Calculation Method:	Minimum Curvature
Design:	As Drilled	Database:	Oklahoma District

Survey

MD (usft)	Inc (°)	Azi (azimuth) (°)	TVD (usft)	N/S (usft)	E/W (usft)	V. Sec (usft)	DLeg (°/100usft)
1,112.0	0.62	123.98	1,112.0	-3.6	6.1	7.0	0.04
1,212.0	0.56	124.53	1,212.0	-4.1	7.0	8.0	0.06
1,312.0	0.58	127.27	1,312.0	-4.7	7.8	9.0	0.03
1,412.0	0.59	133.18	1,412.0	-5.4	8.6	10.0	0.06
1,512.0	0.59	125.59	1,511.9	-6.0	9.3	11.1	0.08
1,612.0	0.61	119.73	1,611.9	-6.6	10.2	12.1	0.06
1,712.0	0.59	117.58	1,711.9	-7.1	11.1	13.1	0.03
1,812.0	0.61	128.69	1,811.9	-7.7	12.0	14.2	0.12
1,912.0	0.64	124.02	1,911.9	-8.3	12.9	15.3	0.06
2,012.0	0.63	115.56	2,011.9	-8.9	13.9	16.3	0.09
2,112.0	0.59	123.36	2,111.9	-9.4	14.8	17.4	0.09
2,212.0	0.49	120.68	2,211.9	-9.9	15.6	18.3	0.10
2,312.0	0.53	135.14	2,311.9	-10.4	16.3	19.2	0.13
2,412.0	0.62	139.03	2,411.9	-11.2	17.0	20.2	0.10
2,512.0	0.52	130.86	2,511.9	-11.9	17.7	21.2	0.13
2,612.0	0.44	126.83	2,611.9	-12.4	18.3	22.0	0.09
2,712.0	0.55	121.49	2,711.9	-12.9	19.0	22.9	0.12
2,812.0	0.49	129.50	2,811.9	-13.4	19.8	23.8	0.09
2,912.0	0.48	124.73	2,911.9	-13.9	20.4	24.6	0.04
3,012.0	2.17	222.59	3,011.9	-15.5	19.5	24.9	2.29
3,112.0	5.11	220.92	3,111.7	-20.3	15.3	24.7	2.94
3,212.0	5.32	217.63	3,211.2	-27.3	9.5	24.6	0.37
3,312.0	5.31	217.83	3,310.8	-34.7	3.9	24.8	0.02
3,412.0	5.64	217.74	3,410.4	-42.2	-2.0	25.0	0.33
3,512.0	5.78	219.55	3,509.9	-50.0	-8.2	25.1	0.23
3,612.0	5.32	218.50	3,609.4	-57.5	-14.3	25.1	0.47
3,712.0	5.27	208.87	3,709.0	-65.1	-19.4	25.9	0.89
3,812.0	5.98	208.21	3,808.5	-73.8	-24.1	27.7	0.71
3,912.0	6.81	217.47	3,907.9	-83.0	-30.1	28.9	1.32
4,012.0	6.66	218.43	4,007.2	-92.3	-37.3	29.1	0.19
4,112.0	6.16	222.39	4,106.5	-100.8	-44.6	28.8	0.67
4,212.0	5.92	221.44	4,206.0	-108.6	-51.6	28.3	0.26
4,312.0	5.49	219.79	4,305.5	-116.2	-58.1	28.0	0.46
4,412.0	5.04	218.42	4,405.1	-123.3	-63.9	28.0	0.47
4,512.0	4.83	217.45	4,504.7	-130.1	-69.1	28.1	0.23
4,612.0	5.52	216.53	4,604.3	-137.3	-74.6	28.4	0.69
4,712.0	8.21	214.65	4,703.6	-147.0	-81.5	29.2	2.70
4,812.0	11.66	206.01	4,802.1	-162.0	-90.0	32.0	3.75
4,912.0	13.82	207.25	4,899.6	-181.7	-99.9	36.7	2.18
5,012.0	15.01	216.97	4,996.5	-202.6	-113.1	39.6	2.69
5,112.0	17.30	221.07	5,092.5	-224.2	-130.7	39.5	2.56
5,212.0	17.21	227.38	5,188.0	-245.4	-151.4	36.8	1.87
5,312.0	12.02	224.65	5,284.7	-262.9	-169.6	33.6	5.23
5,412.0	12.73	205.68	5,382.5	-280.2	-181.7	35.2	4.11

RECEIVED

JUL 27 2015



EOW Completion Report



Company:	Antero Resources	Local Co-ordinate Reference:	Well Oneacre Unit 2H
Project:	Doddridge County WV	TVD Reference:	Oneacre Unit 2H 1050' GL + 25' RKB @ 1075.0us
Site:	Ruth/Walter/Caswell/Arters	MD Reference:	Oneacre Unit 2H 1050' GL + 25' RKB @ 1075.0us
Well:	Oneacre Unit 2H	North Reference:	Grid
Wellbore:	Original Wellpath	Survey Calculation Method:	Minimum Curvature
Design:	As Drilled	Database:	Oklahoma District

Survey

MD (usft)	Inc (°)	Azi (azimuth) (°)	TVD (usft)	N/S (usft)	E/W (usft)	V. Sec (usft)	DLeg (°/100usft)
5,512.0	18.52	213.29	5,478.7	-303.4	-195.2	39.3	6.13
5,612.0	24.44	214.10	5,571.7	-333.9	-215.5	42.6	5.93
5,712.0	26.16	217.69	5,662.2	-368.5	-240.6	44.9	2.30
5,812.0	27.17	228.84	5,751.6	-401.0	-271.3	41.5	5.10
5,912.0	27.58	229.42	5,840.4	-431.0	-306.0	33.4	0.49
6,012.0	27.07	226.11	5,929.2	-461.9	-340.0	26.4	1.60
6,063.0	27.39	227.83	5,974.6	-477.8	-357.1	23.2	1.67
6,156.0	27.02	228.83	6,057.3	-506.1	-388.8	16.3	0.63
6,250.0	26.23	227.49	6,141.3	-534.2	-420.2	9.6	1.06
6,344.0	25.44	227.46	6,225.9	-561.8	-450.4	3.5	0.84
6,439.0	25.48	227.70	6,311.7	-589.4	-480.6	-2.6	0.12
6,533.0	28.10	228.38	6,395.6	-617.7	-512.1	-9.2	2.81
6,627.0	28.08	228.62	6,478.5	-647.0	-545.2	-16.5	0.12
6,722.0	27.29	227.66	6,562.6	-676.5	-578.1	-23.5	0.95
6,816.0	27.44	227.91	6,646.1	-705.5	-610.1	-30.1	0.20
6,844.0	26.98	229.07	6,671.0	-714.0	-619.7	-32.3	2.51
6,875.0	28.12	226.32	6,698.5	-723.7	-630.3	-34.4	5.51
6,907.0	31.42	221.04	6,726.3	-735.2	-641.2	-35.7	13.16
6,938.0	35.10	214.33	6,752.2	-748.6	-651.6	-35.2	16.77
6,970.0	37.29	208.82	6,778.0	-764.7	-661.4	-32.8	12.25
7,001.0	39.16	204.23	6,802.4	-781.9	-670.0	-28.6	10.97
7,027.0	40.62	200.91	6,822.4	-797.3	-676.4	-23.9	9.92
Middlesex							
7,032.0	40.91	200.30	6,826.1	-800.3	-677.5	-22.9	9.92
7,064.0	41.71	196.34	6,850.2	-820.4	-684.1	-15.4	8.54
7,095.0	42.83	192.32	6,873.1	-840.6	-689.3	-6.7	9.44
7,127.0	44.49	188.85	6,896.3	-862.3	-693.3	3.8	9.11
7,158.0	45.74	185.81	6,918.2	-884.1	-696.1	15.4	8.03
7,189.0	47.75	182.52	6,939.4	-906.6	-697.8	28.3	10.09
7,221.0	49.55	178.56	6,960.5	-930.6	-698.0	43.2	10.86
7,237.0	50.45	176.92	6,970.8	-942.8	-697.5	51.3	9.65
Burketty							
7,252.0	51.32	175.43	6,980.3	-954.4	-696.7	59.2	9.65
7,281.0	52.31	173.19	6,998.2	-977.1	-694.5	75.2	6.98
Tully							
7,284.0	52.42	172.96	7,000.1	-979.5	-694.2	76.9	6.98
7,315.0	53.67	170.11	7,018.7	-1,004.0	-690.5	95.2	8.38
7,347.0	55.11	167.81	7,037.3	-1,029.5	-685.5	115.1	7.37
7,378.0	56.73	166.86	7,054.7	-1,054.6	-679.9	135.3	5.81
7,409.0	58.19	165.61	7,071.4	-1,079.9	-673.7	156.1	5.81
7,441.0	60.93	162.47	7,087.6	-1,106.4	-666.1	178.7	12.04
7,472.0	63.65	158.43	7,102.0	-1,132.3	-656.9	202.1	14.49
7,504.0	65.45	155.30	7,115.8	-1,158.9	-645.5	227.6	10.47
7,535.0	66.53	153.33	7,128.4	-1,184.4	-633.3	253.2	6.77
7,566.0	68.69	150.86	7,140.2	-1,209.7	-619.8	279.6	10.14

RECEIVED

JUL 27 2015



WV GEOLOGICAL SURVEY EOW Completion Report
MORGANTOWN, WV



Company:	Antero Resources	Local Co-ordinate Reference:	Well Oneacre Unit 2H
Project:	Doddridge County WV	TVD Reference:	Oneacre Unit 2H 1050' GL + 25' RKB @ 1075.0us
Site:	Ruth/Walter/Caswell/Arters	MD Reference:	Oneacre Unit 2H 1050' GL + 25' RKB @ 1075.0us
Well:	Oneacre Unit 2H	North Reference:	Grid
Wellbore:	Original Wellpath	Survey Calculation Method:	Minimum Curvature
Design:	As Drilled	Database:	Oklahoma District

Survey

MD (usft)	Inc (°)	Azi (azimuth) (°)	TVD (usft)	N/S (usft)	E/W (usft)	V. Sec (usft)	DLeg (°/100usft)
7,590.0	70.61	148.75	7,148.5	-1,229.1	-608.5	300.6	11.49
Marcellus							
7,598.0	71.26	148.06	7,151.1	-1,235.6	-604.6	307.7	11.49
7,629.0	72.91	145.39	7,160.7	-1,260.2	-588.4	335.8	9.77
7,661.0	74.19	144.22	7,169.7	-1,285.3	-570.7	365.4	5.32
7,692.0	75.76	142.19	7,177.8	-1,309.3	-552.8	394.4	8.10
7,723.0	80.04	141.03	7,184.3	-1,333.0	-533.9	424.0	14.28
7,755.0	84.76	140.30	7,188.5	-1,357.6	-513.8	455.0	14.92
7,786.0	88.66	137.54	7,190.3	-1,380.9	-493.5	485.5	15.40
7,817.0	89.87	132.77	7,190.7	-1,402.9	-471.7	516.3	15.87
7,892.0	91.81	132.61	7,189.6	-1,453.7	-416.5	591.1	2.60
7,987.0	92.51	129.31	7,186.0	-1,515.9	-344.9	686.0	3.55
8,081.0	92.29	126.71	7,182.1	-1,573.8	-270.9	779.9	2.77
8,175.0	89.60	127.51	7,180.5	-1,630.5	-195.9	873.8	2.99
8,270.0	90.20	128.01	7,180.7	-1,688.6	-120.8	968.8	0.82
8,364.0	92.18	129.49	7,178.7	-1,747.5	-47.5	1,062.8	2.63
8,459.0	92.08	129.32	7,175.2	-1,807.7	25.8	1,157.7	0.21
8,553.0	91.35	127.55	7,172.4	-1,866.1	99.4	1,251.7	2.04
8,647.0	90.74	126.95	7,170.7	-1,923.0	174.2	1,345.6	0.91
8,742.0	91.10	127.81	7,169.1	-1,980.7	249.7	1,440.5	0.98
8,836.0	90.47	131.35	7,167.9	-2,040.6	322.1	1,534.5	3.82
8,930.0	89.63	131.43	7,167.8	-2,102.7	392.7	1,628.4	0.90
9,024.0	89.08	131.59	7,168.8	-2,165.0	463.0	1,722.3	0.61
9,119.0	89.46	128.74	7,170.0	-2,226.3	535.6	1,817.3	3.03
9,213.0	91.81	127.80	7,169.0	-2,284.5	609.4	1,911.3	2.69
9,307.0	93.76	127.50	7,164.4	-2,341.8	683.8	2,005.1	2.10
9,401.0	91.68	127.25	7,160.0	-2,398.8	758.4	2,099.0	2.23
9,496.0	91.34	126.91	7,157.5	-2,456.1	834.1	2,193.9	0.51
9,588.0	91.31	128.25	7,155.3	-2,512.2	907.0	2,285.8	1.46
9,681.0	90.91	128.03	7,153.5	-2,569.6	980.1	2,378.8	0.49
9,774.0	93.50	130.89	7,150.0	-2,628.6	1,051.9	2,471.7	4.15
9,867.0	93.80	131.14	7,144.0	-2,689.5	1,121.9	2,564.5	0.42
9,959.0	92.89	129.90	7,138.7	-2,749.2	1,191.7	2,656.3	1.67
10,052.0	92.22	129.10	7,134.5	-2,808.3	1,263.4	2,749.2	1.12
10,145.0	92.39	128.75	7,130.8	-2,866.7	1,335.7	2,842.1	0.42
10,237.0	91.24	128.35	7,127.9	-2,924.0	1,407.6	2,934.1	1.32
10,330.0	90.71	131.23	7,126.3	-2,983.5	1,479.1	3,027.0	3.15
10,423.0	92.65	132.32	7,123.6	-3,045.4	1,548.4	3,119.9	2.39
10,516.0	92.45	128.99	7,119.4	-3,105.9	1,618.9	3,212.7	3.58
10,608.0	90.97	127.45	7,116.7	-3,162.8	1,691.1	3,304.7	2.32
10,703.0	90.64	126.93	7,115.3	-3,220.3	1,766.8	3,399.6	0.65
10,797.0	93.03	128.29	7,112.3	-3,277.6	1,841.2	3,493.5	2.92
10,891.0	91.99	127.25	7,108.2	-3,335.1	1,915.4	3,587.4	1.56
10,986.0	90.34	129.10	7,106.3	-3,393.8	1,990.1	3,682.4	2.61

RECEIVED

JUL 27 2015



Company:	Antero Resources	Local Co-ordinate Reference:	Well Oneacre Unit 2H
Project:	Doddridge County WV	TVD Reference:	Oneacre Unit 2H 1050' GL + 25' RKB @ 1075.0us
Site:	Ruth/Walter/Caswell/Arters	MD Reference:	Oneacre Unit 2H 1050' GL + 25' RKB @ 1075.0us
Well:	Oneacre Unit 2H	North Reference:	Grid
Wellbore:	Original Wellpath	Survey Calculation Method:	Minimum Curvature
Design:	As Drilled	Database:	Oklahoma District

Survey

MD (usft)	Inc (°)	Azi (azimuth) (°)	TVD (usft)	N/S (usft)	E/W (usft)	V. Sec (usft)	DLeg (°/100usft)
11,080.0	90.61	128.63	7,105.5	-3,452.8	2,063.3	3,776.4	0.58
11,174.0	90.50	128.84	7,104.6	-3,511.6	2,136.6	3,870.4	0.25
11,268.0	89.26	129.44	7,104.8	-3,570.9	2,209.5	3,964.4	1.47
11,362.0	90.17	128.16	7,105.3	-3,629.8	2,282.8	4,058.4	1.67
11,456.0	91.54	130.69	7,103.9	-3,689.5	2,355.4	4,152.3	3.06
11,550.0	89.22	128.16	7,103.2	-3,749.2	2,428.0	4,246.3	3.65
11,645.0	89.16	128.01	7,104.6	-3,807.8	2,502.7	4,341.3	0.17
11,739.0	90.23	128.80	7,105.1	-3,866.2	2,576.4	4,435.3	1.41
11,833.0	90.24	132.53	7,104.7	-3,927.4	2,647.7	4,529.2	3.97
11,927.0	89.60	133.73	7,104.8	-3,991.7	2,716.3	4,623.0	1.45
12,021.0	89.63	130.58	7,105.5	-4,054.8	2,785.9	4,716.8	3.35
12,116.0	88.76	130.84	7,106.8	-4,116.7	2,857.9	4,811.8	0.96
12,210.0	88.96	125.61	7,108.7	-4,174.9	2,931.8	4,905.7	5.57
12,304.0	90.20	126.88	7,109.3	-4,230.4	3,007.6	4,999.6	1.89
12,399.0	91.35	127.46	7,108.1	-4,287.8	3,083.3	5,094.5	1.36
12,493.0	89.66	126.11	7,107.2	-4,344.1	3,158.5	5,188.5	2.30
12,587.0	89.76	126.86	7,107.7	-4,400.0	3,234.1	5,282.4	0.80
12,682.0	90.64	128.59	7,107.4	-4,458.1	3,309.2	5,377.3	2.04
12,777.0	89.63	127.93	7,107.2	-4,516.9	3,383.8	5,472.3	1.27
12,871.0	91.68	133.57	7,106.1	-4,578.3	3,455.0	5,566.2	6.38
12,965.0	90.00	129.15	7,104.7	-4,640.4	3,525.5	5,660.1	5.03
13,059.0	89.46	126.04	7,105.1	-4,697.7	3,600.0	5,754.1	3.36
13,154.0	92.25	127.15	7,103.7	-4,754.3	3,676.3	5,849.0	3.16
13,248.0	91.64	127.47	7,100.5	-4,811.3	3,751.0	5,942.9	0.73
13,342.0	90.67	128.41	7,098.6	-4,869.0	3,825.1	6,036.8	1.44
13,436.0	90.64	130.26	7,097.6	-4,928.6	3,897.8	6,130.8	1.97
13,531.0	91.68	129.95	7,095.6	-4,989.8	3,970.4	6,225.8	1.14
13,625.0	91.04	129.44	7,093.4	-5,049.8	4,042.7	6,319.8	0.87
13,719.0	91.24	129.53	7,091.5	-5,109.6	4,115.3	6,413.7	0.23
13,813.0	90.94	128.96	7,089.8	-5,169.0	4,188.1	6,507.7	0.69
13,907.0	91.61	128.92	7,087.7	-5,228.1	4,261.2	6,601.7	0.71
14,002.0	90.97	128.09	7,085.5	-5,287.2	4,335.5	6,696.7	1.10
14,096.0	89.83	129.92	7,084.9	-5,346.4	4,408.5	6,790.7	2.29
14,190.0	88.89	127.92	7,085.9	-5,405.4	4,481.6	6,884.6	2.35
14,284.0	90.34	127.73	7,086.5	-5,463.1	4,555.9	6,978.6	1.56
14,378.0	91.58	130.39	7,085.0	-5,522.3	4,628.9	7,072.6	3.12
14,472.0	91.24	131.88	7,082.7	-5,584.1	4,699.6	7,166.5	1.63
14,567.0	89.56	129.65	7,082.0	-5,646.1	4,771.6	7,261.4	2.94
14,661.0	89.73	128.94	7,082.6	-5,705.7	4,844.3	7,355.4	0.78
14,755.0	89.80	128.62	7,083.0	-5,764.5	4,917.6	7,449.4	0.35
14,849.0	89.29	127.74	7,083.7	-5,822.6	4,991.5	7,543.4	1.08
14,943.0	90.31	127.72	7,084.0	-5,880.2	5,065.8	7,637.4	1.09
15,037.0	88.89	128.13	7,084.7	-5,937.9	5,140.0	7,731.4	1.57
15,131.0	89.26	128.63	7,086.2	-5,996.3	5,213.7	7,825.4	0.66
15,226.0	91.04	129.86	7,086.0	-6,056.4	5,287.2	7,920.4	2.28



Company:	Antero Resources	Local Co-ordinate Reference:	Well Oneacre Unit 2H
Project:	Doddridge County WV	TVD Reference:	Oneacre Unit 2H 1050' GL + 25' RKB @ 1075.0us
Site:	Ruth/Walter/Caswell/Arters	MD Reference:	Oneacre Unit 2H 1050' GL + 25' RKB @ 1075.0us
Well:	Oneacre Unit 2H	North Reference:	Grid
Wellbore:	Original Wellpath	Survey Calculation Method:	Minimum Curvature
Design:	As Drilled	Database:	Oklahoma District

Survey

MD (usft)	Inc (°)	Azi (azimuth) (°)	TVD (usft)	N/S (usft)	E/W (usft)	V. Sec (usft)	DLeg (°/100usft)
15,320.0	90.30	129.09	7,084.9	-6,116.1	5,359.8	8,014.3	1.14
15,415.0	89.80	130.00	7,084.8	-6,176.6	5,433.0	8,109.3	1.09
15,509.0	92.25	130.92	7,083.1	-6,237.6	5,504.5	8,203.3	2.78
15,603.0	91.75	130.55	7,079.8	-6,298.9	5,575.7	8,297.2	0.66
15,697.0	90.34	129.77	7,078.1	-6,359.5	5,647.5	8,391.1	1.71
15,776.0	90.07	130.25	7,077.8	-6,410.3	5,708.1	8,470.1	0.70
15,827.0	90.07	130.25	7,077.8	-6,443.3	5,747.0	8,521.1	0.00

Design Annotations

Measured Depth (usft)	Vertical Depth (usft)	Local Coordinates		Comment
		+N/-S (usft)	+E/-W (usft)	
7,027.0	6,822.4	-797.3	-676.4	Middlesex
7,237.0	6,970.8	-942.8	-697.5	Burketty
7,281.0	6,998.2	-977.1	-694.5	Tully
7,590.0	7,148.5	-1,229.1	-608.5	Marcellus

Checked By: _____ Approved By: _____ Date: _____

RECEIVED
 JUL 27 2015
 WV GEOLOGICAL SURVEY
 MORGANTOWN, WV