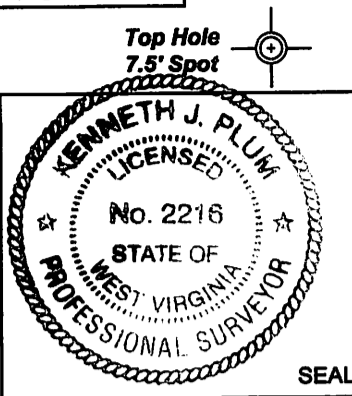
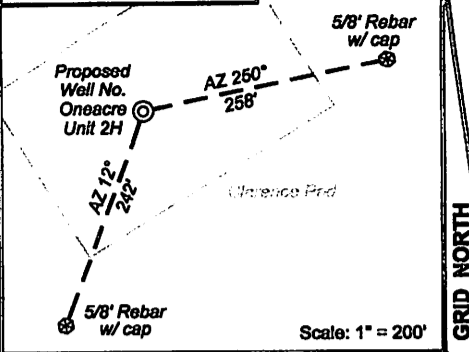


Antero Resources
Well No. Oneacre Unit 2H
Antero Resources Appalachian Corporation

(⊕) Denotes location of well on United States topographic maps

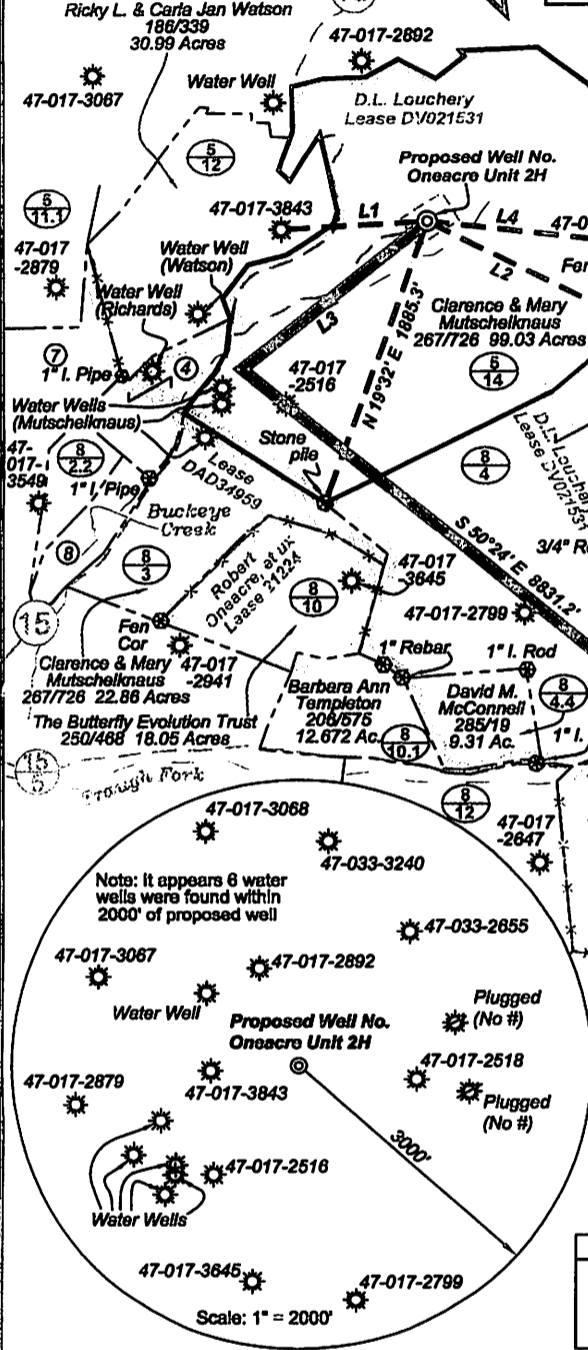
1,885' to Bottom Hole
LATITUDE 39 - 15 - 00

Well Location References



Notes:
West Virginia Coordinate System of 1927, North Zone based upon Differential GPS Measurements.
 Well No. Oneacre Unit 2H Top Hole coordinates are
 N: 273,025.65 Latitude: 39°14'40.84"
 E: 1,897,457.61 Longitude: 80°34'05.67"
 Bottom Hole coordinates are
 N: 266,474.47 Latitude: 39°13'36.75"
 E: 1,703,120.70 Longitude: 80°32'52.72"
UTM Zone 17, NAD 1983
 Top Hole Coordinates: Bottom Hole Coordinates:
 N: 4,344,028.012m N: 4,342,080.964m
 E: 537,273.249m E: 539,031.816m
 Plat orientation and corner and well references are based upon the grid north meridian.
 Well location references are based upon the magnetic meridian.

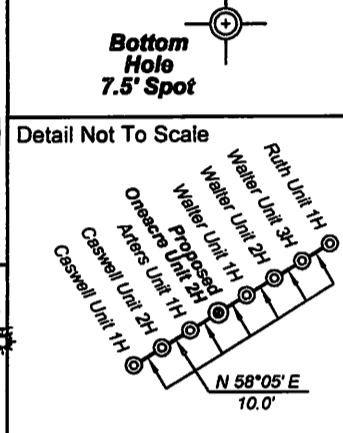
LONGITUDE 80 - 32 - 30
1,850' to Top Hole
8,401' to Bottom Hole



Legend
 ⊕ Proposed gas well
 ⊙ Found corner, as noted
 (15) County Route
 --- Surface boundary (approx.)
 --- Existing Road
 --- Interior surface tracts (approx.)
 --- Creek or Drain
 --- Existing Fenceline

I, the undersigned, hereby certify that this plat is correct to the best of my knowledge and belief and shows all the information required by law and the regulations issued and prescribed by the Department of Environmental Protection.

Kenneth J. Plum
Kenneth J. Plum, P.S. 2216



Tax Map 8 Parcels

Par	Owner	DB/Pg	Acres
1 13	Lucille Devericks Billy J. Devericks	WB42/159	23.0
2 4.3	Robert & Holly Davis	247/672	0.79
3 4.5	Dave & Beatrice Kearns	263/40	2.0
4 3.1	Darrell R. Richards	281/289	9.35
5 4.2	Charles D. Ball	241/504	5.0
6 24.2	Wm. & Leslie Westfall	244/355	0.91
7 2.1	Don & Charlotte Henrey	294/81	69.57
8 2	Mikase T. Ash	263/294	4.88

Line	Bearing	Distance
L1	N 86°53' E	898.2'
L2	N 63°17' W	1498.5'
L3	S 51°04' W	1487.3'
L4	N 83°36' W	1225.0'

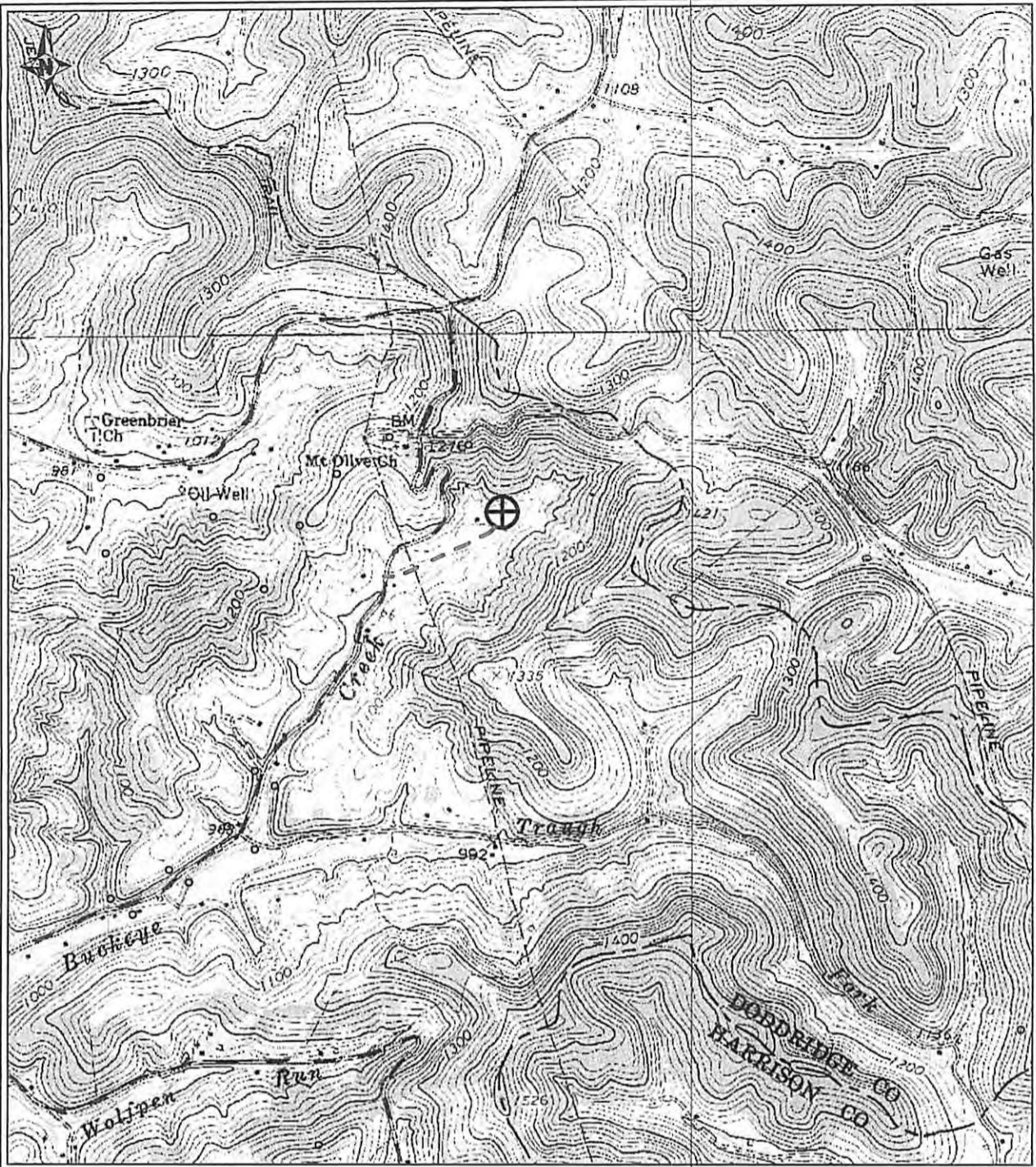
FILE NO: 132-30-G-12
 DRAWING NO: 132-12 Oneacre 2H Well
 SCALE: 1" = 1200'
 MINIMUM DEGREE OF ACCURACY:
 Submeter
 PROVEN SOURCE OF ELEVATION:
 WVDOT, Bridgeport, WV

STATE OF WEST VIRGINIA
 DEPARTMENT OF ENVIRONMENTAL PROTECTION
 OFFICE OF OIL AND GAS

DATE: October 5 20 12
 OPERATOR'S WELL NO. Oneacre Unit 2H
 API WELL NO:
 47 - 017 - 6159
 STATE COUNTY PERMIT

WELL TYPE: OIL GAS LIQUID INJECTION WASTE DISPOSAL
 (IF GAS) PRODUCTION: STORAGE DEEP SHALLOW
 LOCATION: ELEVATION: 1050' WATERSHED: Buckeye Creek QUADRANGLE: Big Isaac
 DISTRICT: Greenbrier COUNTY: Doddridge
 SURFACE OWNER: Clarence & Mary Mutschelknaus W. S. Sadler, et al; Orphia Stephens; Arnold Krafft, et al
 ROYALTY OWNER: D. L. Louchery; Walter W. Sadler; Billy Devericks, et ux; Diana Rupert Livingston LEASE NO: DV019225; DV019215
 ACREAGE: 99.03 79; 130
 DV005328 & DV019188 35.5; 54
 DV021531; 088188; 119589 ACREAGE: 172; 85.25; 48; 23
 PROPOSED WORK: DRILL CONVERT DRILL DEEPER FRACTURE OR STIMULATE PLUG OFF OLD FORMATION
 PERFORATE NEW FORMATION OTHER PHYSICAL CHANGE IN WELL (SPECIFY) TVD 7,400'
 PLUG AND ABANDON CLEAN OUT AND REPLUG TARGET FORMATION: Marcellus Shale ESTIMATED DEPTH: MD 17,000'
 WELL OPERATOR: Antero Resources Appalachian Corporation DESIGNATED AGENT: Dianna Stamper - CT Corporation System
 ADDRESS: 1625 17th Street ADDRESS: 5400 D Big Tyler Road
 Denver, CO 80202 Charleston, WV 25313

01/11/2013



PETRA 7/6/2012 12:05:34 PM

OCT 1 2 2012

WATER RESOURCES DIVISION

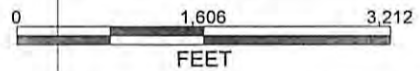
Environmental Information

Antero Resources Corporation

APPALACHIAN BASIN

Oneacre Unit 2H

Harrison County



REMARKS
 QUADRANGLE: BIG ISAAC
 WATERSHED: BUCKEYE CREEK
 DISTRICT: GREENBRIER

By: ECM

July 6, 2012