

4701706170

RECEIVED

DEC 16 2013



Antero Resources
Seaborn Unit 2H
Doddridge County WV
Northing: 14262941.51
Easting: 1679373.00
As Drilled

WV GEOLOGICAL SURVEY
MORGANTOWN, WV

N/S	+E/W	Ground Level	1199.0	Soil
0.0	14262941.51	1679373.00 38° 16' 38.384 N 80° 51' 44.422 W		

Coordinate (N/S) Reference: WGS84 Seaborn Unit 2H, Grid North
Seaborn Unit 2H Reference: 2007 01 01 NAD 83
Horizontal Datum: International Reference Ellipsoid
Vertical Datum: Mean Sea Level

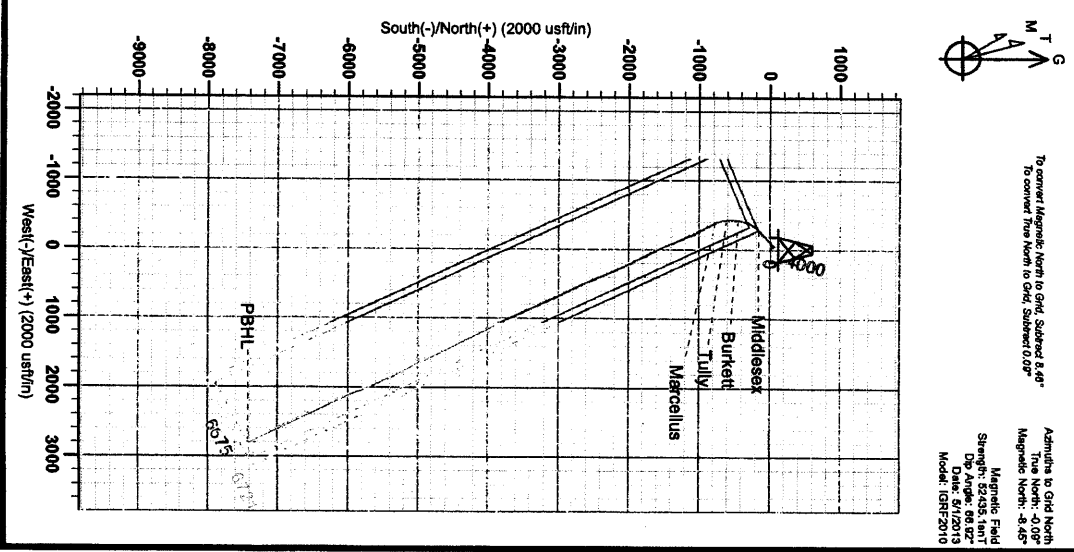
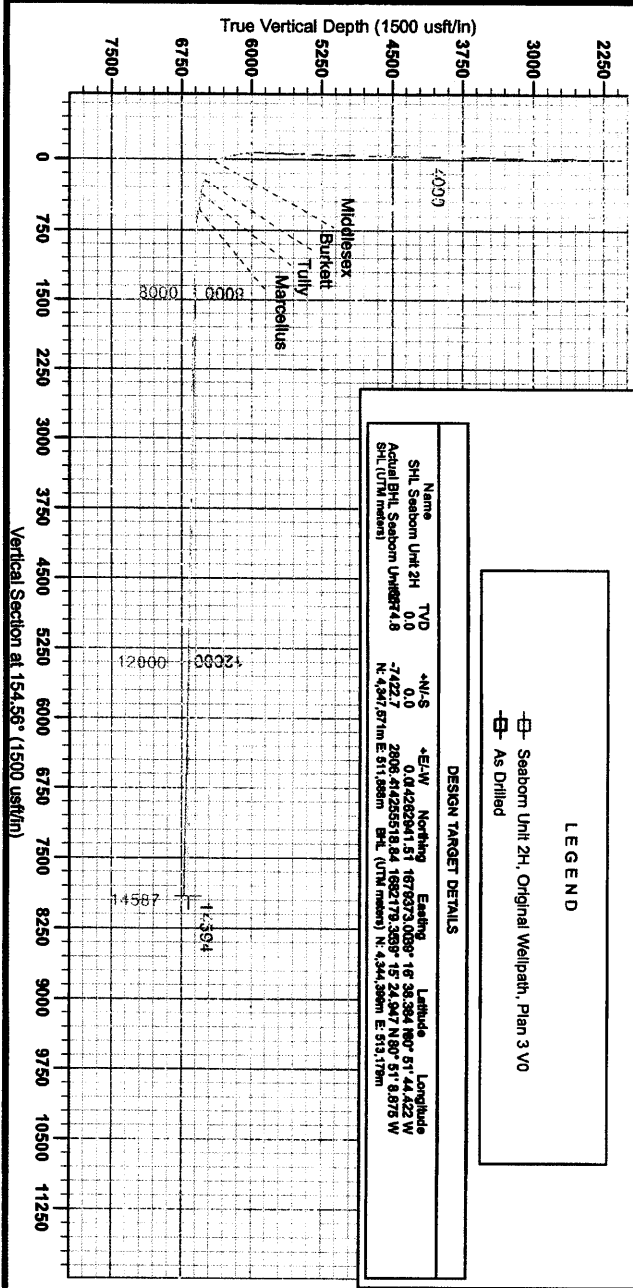
PROJECT DETAILS: Doddridge County, WV
Geologic System: Unconformal Triassic/Miocene (US Survey Feet)
Datum: NAD 1987 (NAD83 CONUS)
Elevation: Zone 17N (84 W to 75 W)
System Datum: Mean Sea Level

Scientific Drilling
Gentle Lightfoot
15-25, September 09 2013
Scientific Drilling
421 South Eagle Lane
Oklahoma City, OK

LEGEND
-□- Seaborn Unit 2H, Original Wellpath, Plan 3 VO
-□- As Drilled

DESIGN TARGET DETAILS

Name	TVD	+N/-S	+E/W	Northing	Easting	Latitude	Longitude
SHL Seaborn Unit 2H	0.0	0.0	0.0	14262941.51	1679373.00	38° 16' 38.384 N	80° 51' 44.422 W
Actual BHL Seaborn Unit 2H	4.8	-7422.7	2806.4	142629518.24	1682179.389	38° 15' 24.947 N	80° 51' 8.875 W
SHL (UTM meters)		N: 4341.671m	E: 811.898m	BHL (UTM meters)	N: 4344.369m	E: 813.179m	



To convert Magnetic North to Grid, Subtract 8.8°
To convert True North to Grid, Subtract 0.9°

Assumptions to Grid North
True North: -0.08°
Magnetic North: -8.46°
Magnetic Field
Strength: 52.435, Int
Dip Angle: 68.82°
Date: 6/1/2013
Model: IGRF2010