

2,248' to Bottom Hole

4,413' to Top Hole

LATITUDE 39 - 15 - 00

LONGITUDE 80 - 35 - 00

9,972' to Bottom Hole

Antero Resources Well No. White Unit 1H

Proposed White Unit 1H (47-17-6182)

Wellhead Layout Detail Not to Scale

Top Hole 7.5' Spot

(*) Denotes Location of Well on United States Topographical Maps

Richard E. & Wilma J. Marsden 229/54 386 Ac.

Tangent Point N:273,724.84 E:1,688,064.96

Proposed Well No. White Unit 1H

M.T. Williams, et al Lease 003636

Ruby Sadler, et al Lease

Golden Unit 1H (47-17-6227)

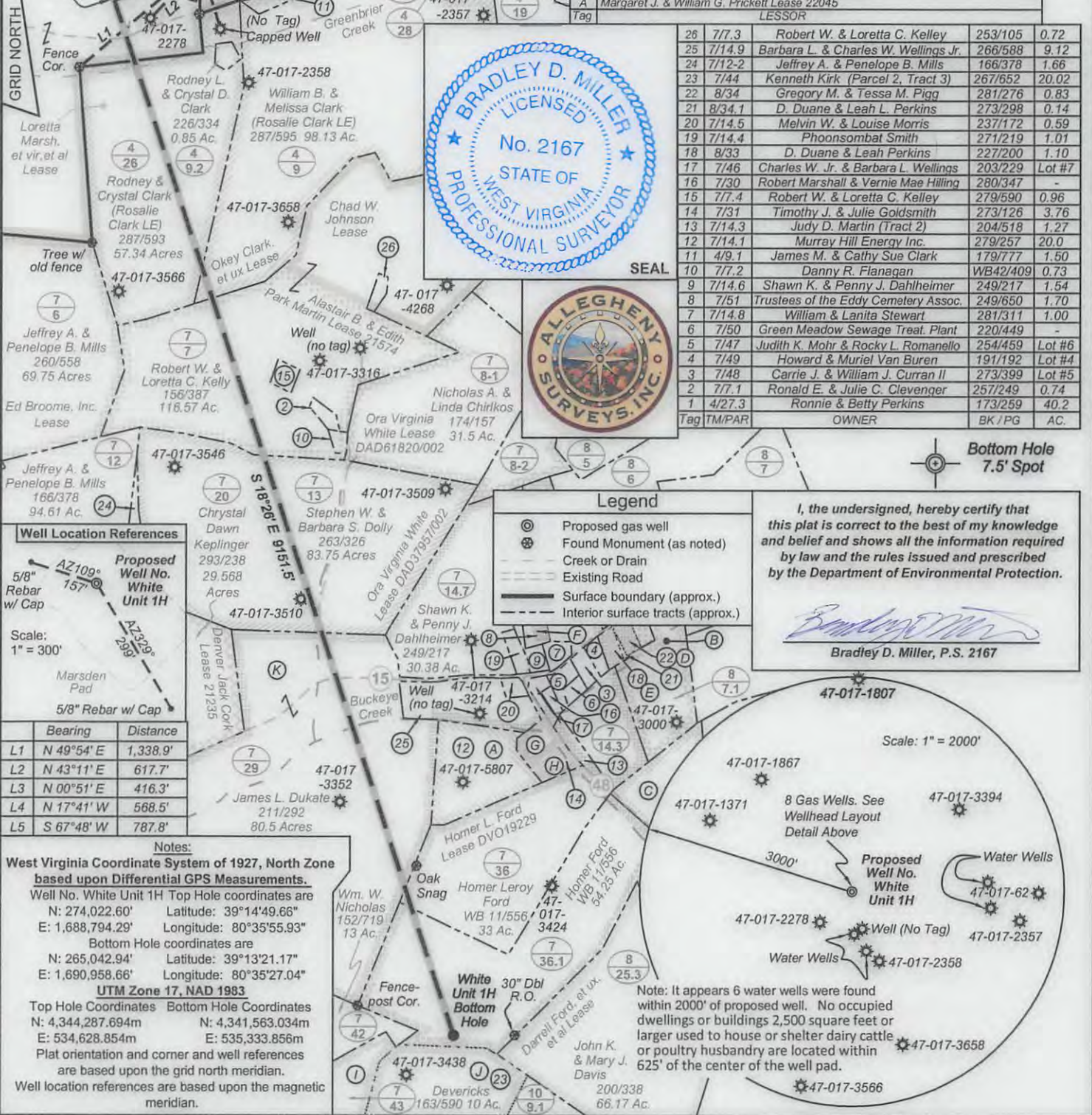
Golden Unit 2H (47-17-6230)

Perkins Unit 1H (47-17-6229)

Flossie Unit 1H (47-17-6180)

Flossie Unit 2H (47-17-6144)

K	Isaac Eddy, et ux Lease L012454 and James Romine Lease DV011162
J	Pauline M. Cottrill & Margaret H. Vincent Lease DAD35254
I	Blaine W. Devericks, et ux, Memorandum of Oil & Gas Lease
H	Timothy J. Goldsmith, et ux, Memorandum of Oil and Gas Lease
G	Glenville State College Foundation Lease
F	Eddy Cemetery Assoc. Public Burying Ground, Memorandum of Oil and Gas Lease
E	Charles W. Wellings Jr., et ux, Memorandum of Oil and Gas Lease
D	Gregory M. Pigg, et ux, Memorandum of Oil and Gas Lease
C	Jason T. Powell Lease TML #1419
B	Richard William Bond II, et ux Lease DAD36472/001
A	Marqaret J. & William G. Prickett Lease 22045
Tag	LESSOR



Well Location References

5/8" Rebar w/ Cap

Scale: 1" = 300'

Bearing	Distance
L1 N 49°54' E	1,338.9'
L2 N 43°11' E	617.7'
L3 N 00°51' E	416.3'
L4 N 17°41' W	568.5'
L5 S 67°48' W	787.8'

Notes:
West Virginia Coordinate System of 1927, North Zone based upon Differential GPS Measurements.
Well No. White Unit 1H Top Hole coordinates are
N: 274,022.60' Latitude: 39°14'49.66"
E: 1,688,794.29' Longitude: 80°35'55.93"
Bottom Hole coordinates are
N: 265,042.94' Latitude: 39°13'21.17"
E: 1,690,958.66' Longitude: 80°35'27.04"
UTM Zone 17, NAD 1983
Top Hole Coordinates Bottom Hole Coordinates
N: 4,344,287.694m N: 4,341,563.034m
E: 534,628.854m E: 535,333.856m
Plat orientation and corner and well references are based upon the grid north meridian.
Well location references are based upon the magnetic meridian.

Well Location References

5/8" Rebar w/ Cap

Scale: 1" = 300'

Bearing	Distance
L1 N 49°54' E	1,338.9'
L2 N 43°11' E	617.7'
L3 N 00°51' E	416.3'
L4 N 17°41' W	568.5'
L5 S 67°48' W	787.8'

FILE NO: 236-30-G-12
DRAWING NO: 236-12 White 1H Well
SCALE: 1" = 1200'
MINIMUM DEGREE OF ACCURACY: Submeter
PROVEN SOURCE OF ELEVATION: WVDOT, Bridgeport, WV

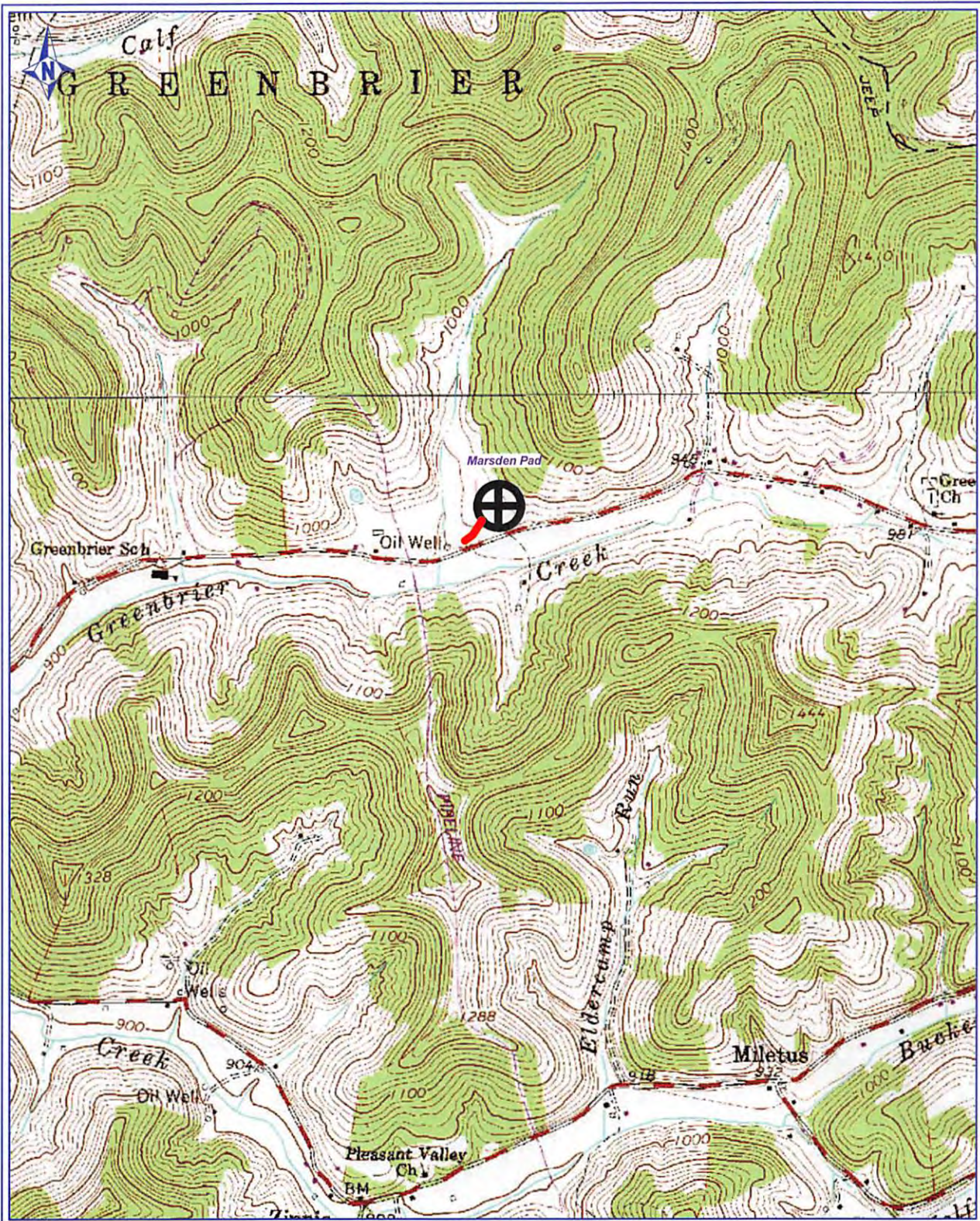
STATE OF WEST VIRGINIA
DEPARTMENT OF ENVIRONMENTAL PROTECTION
OIL AND GAS DIVISION

DATE: September 24 2013
OPERATOR'S WELL NO. White Unit 1H
API WELL NO MOD
47 - 017 - 06182
STATE COUNTY PERMIT

WELL TYPE: OIL GAS LIQUID INJECTION WASTE DISPOSAL
(IF GAS) PRODUCTION: STORAGE DEEP SHALLOW
LOCATION: ELEVATION: 971'
DISTRICT: Greenbrier Richard E. & Wilma J. Marsden
SURFACE OWNER: Isaac Eddy, et ux and James Romine
ROYALTY OWNER: M.T. Williams, et al; Okey Clark, et ux; Homer L. Ford; Ora Virginia White
PROPOSED WORK: DRILL CONVERT DRILL DEEPER FRACTURE OR STIMULATE PLUG OFF OLD FORMATION
 PERFORATE NEW FORMATION OTHER PHYSICAL CHANGE IN WELL (SPECIFY) Modification - BHL
 PLUG AND ABANDON CLEAN OUT AND REPLUG TARGET FORMATION: Marcellus Shale ESTIMATED DEPTH: 7,200' TVD 17,400' MD

WELL OPERATOR: Antero Resources Corporation
ADDRESS: 1625 17th Street Denver, CO 80202
DESIGNATED AGENT: Dianna Stamper - CT Corporation System
ADDRESS: 5400 D Big Tyler Road Charleston, WV 25313

02/21/2014



PETRA 9/5/2012 4:08:17 PM

17-06182 H6A WHITE UNIT 1H
 ANTERO RESOURCES

PAD NAME: Marsden

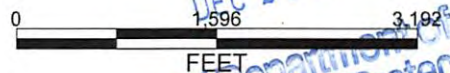
Antero Resources Corporation

Appalachia Basin

Marsden Pad

White Unit 1H

Doddridge County



DEC 27 2012

RECEIVED
 Office of Oil & Gas
 WV Department of Environmental Protection

REMARKS

QUADRANGLE: BIG ISAAC
 WATERSHED: UPPER MIDDLE ISL CR.
 DISTRICT: GREENBRIER

By: ECM

September 5, 2012