

RECEIVED

AUG 03 2015

WV GEOLOGICAL SURVEY
MORGANTOWN, WV



Ahouse Unit 2H
Doddridge County WV
Northing: 14249862.98
Easting: 1682105.18
As Drilled



Scientific Drilling



To convert Magnetic North to Grid, Subtract 4.7°
To convert True North to Grid, Subtract 0.09°

Azimuths to Grid North
True North: -0.09°
Magnetic North: -3.47°

Magnetic Field
Strength: 52378.2 aT
Dip Angle: 66.86°
Date: 8/23/2013
Model: IGR2010

SITE DETAILS: Ahouse / Callie Pad
Site Center: Ahouse Unit 1H
Site Centre Northing: 14249870.09
Easting: 1682112.06
Positional Uncertainty: 2.8
Convergence: 0.09
Local North: Grid

WELL DETAILS: Ahouse Unit 2H
Ground Level: 1005.0
Northing: 1682105.18
Easting: 14249862.98
Longitude: 81° 9.835 W

LEGEND

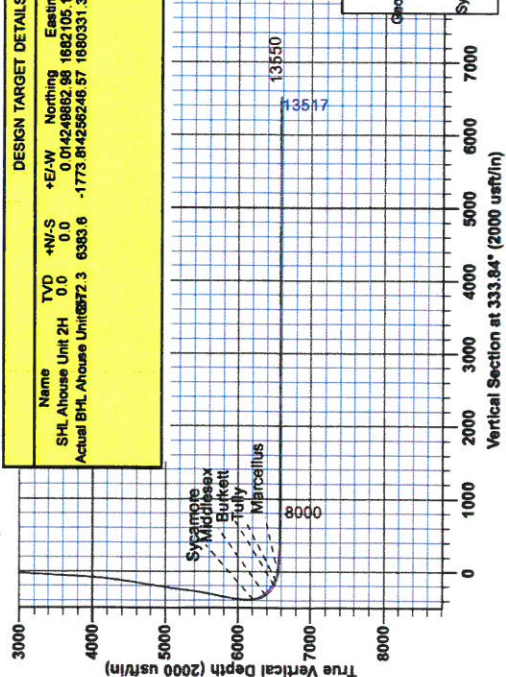
- Callie Unit 2H, Original Wellpath, As Drilled V0
- Callie Unit 1H, Original Wellpath, As Drilled V0
- Ahouse Unit 1H, Original Wellpath, As Drilled V0
- Ahouse Unit 2H, Original Wellpath, Plan 4 V0
- As Drilled

Genie Lightfoot
10/29 April 28 2014
Scientific Drilling
421 South Eagle Lane
Oklahoma City, OK 73128

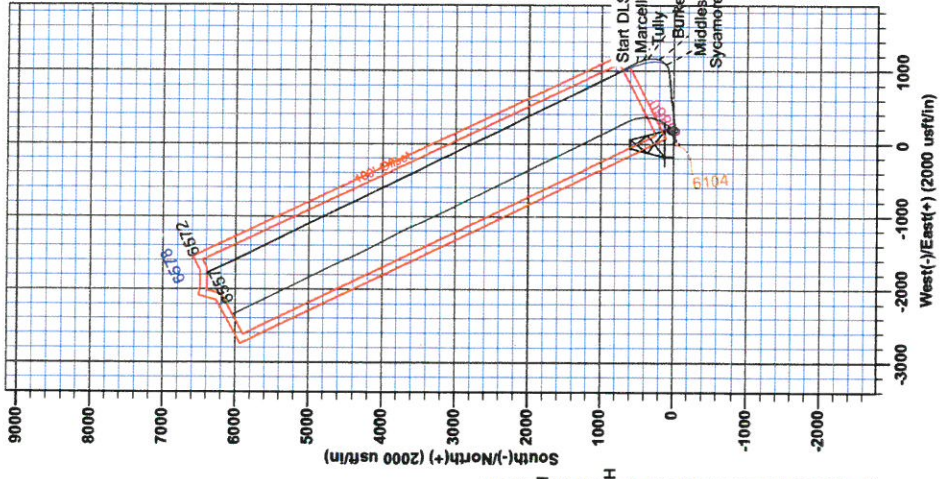
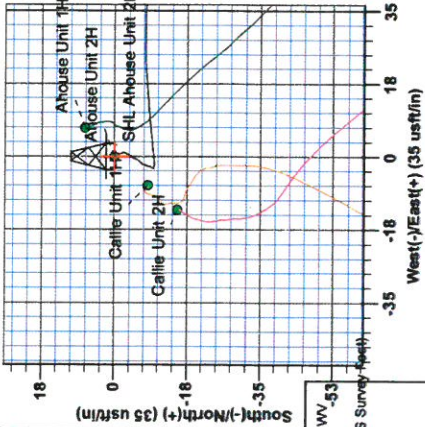
Precision 52: 1005' 0L + 16' KG @ 1023.0 vert
Gr: 1005.0

DESIGN TARGET DETAILS

Name	TVD	N/S	E/W	Northing	Easting	Latitude	Longitude
SHL Ahouse Unit 2H	0.0	0.0	0.0	14249862.98	1682105.18	81° 29' 02.4" N	80° 51' 9.835" W
Actual BHL Ahouse Unit	6872.3	6363.6	-1773.8	8142562.46	571680331.359	15° 32' 17.2" N	80° 51' 32.363" W



PROJECT DETAILS: Doddridge County WV 53
Geoidetic System: Universal Transverse Mercator (US Survey Feet)
Datum: NAD 1927 (NADCON CONUS)
Ellipsoid: Clarke 1866
Zone: Zone 17N (84 W to 76 W)
System Datum: Mean Sea Level





RECEIVED
AUG 03 2015
WV GEOLOGICAL SURVEY
MORGANTOWN, WV

Antero Resources

**Doddridge County WV
Ahouse / Callie Pad
Ahouse Unit 2H
Original Wellpath**

Design: As Drilled

EOW Completion Report

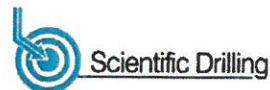
28 April, 2014



AUG 03 2015



EOW Completion Report



Company:	Antero Resources	Local Co-ordinate Reference:	Well Ahouse Unit 2H
Project:	Doddridge County WV	TVD Reference:	Precision 522: 1005' GL + 18' KB @ 1023.0usft
Site:	Ahouse / Callie Pad	MD Reference:	Precision 522: 1005' GL + 18' KB @ 1023.0usft
Well:	Ahouse Unit 2H	North Reference:	Grid
Wellbore:	Original Wellpath	Survey Calculation Method:	Minimum Curvature
Design:	As Drilled	Database:	Oklahoma District

Project	Doddridge County WV, McClellan District		
Map System:	Universal Transverse Mercator (US Survey Fee	System Datum:	Mean Sea Level
Geo Datum:	NAD 1927 (NADCON CONUS)		
Map Zone:	Zone 17N (84 W to 78 W)		

Site	Ahouse / Callie Pad				
Site Position:		Northing:	14,249,870.09 usft	Latitude:	39° 14' 29.095 N
From:	Map	Easting:	1,682,112.06 usft	Longitude:	80° 51' 9.848 W
Position Uncertainty:	2.8 usft	Slot Radius:	13-3/16"	Grid Convergence:	0.09 °

Well	Ahouse Unit 2H					
Well Position	+N/-S	0.0 usft	Northing:	14,249,862.98 usft	Latitude:	39° 14' 29.024 N
	+E/-W	0.0 usft	Easting:	1,682,105.18 usft	Longitude:	80° 51' 9.935 W
Position Uncertainty		2.8 usft	Wellhead Elevation:	1,023.0 usft	Ground Level:	1,005.0 usft

Wellbore	Original Wellpath				
-----------------	-------------------	--	--	--	--

Magnetics	Model Name	Sample Date	Declination (°)	Dip Angle (°)	Field Strength (nT)
	IGRF2010	8/23/2013	-8.38	66.86	52,378

Design	As Drilled				
---------------	------------	--	--	--	--

Audit Notes:					
Version:	1.0	Phase:	ACTUAL	Tie On Depth:	0.0

Vertical Section:	Depth From (TVD) (usft)	+N/-S (usft)	+E/-W (usft)	Direction (°)
	0.0	0.0	0.0	333.84

Survey Program	From (usft)	To (usft)	Date	Survey (Wellbore)	Tool Name	Description
	105.0	6,190.0	4/28/2014	Survey #4 Def Gyro to KOP (Original Wel	SDI Standard Keeper	Scientific Drilling Intl. Standard Wireline Keeper
	6,244.0	13,550.0		Survey #5 MWD (Original Wellpath)	MWD SDI	MWD - Standard ver 1.0.1

Survey	MD (usft)	Inc (°)	Azi (azimuth) (°)	TVD (usft)	N/S (usft)	E/W (usft)	V. Sec (usft)	DLeg (°/100usft)
	0.0	0.00	0.00	0.0	0.0	0.0	0.0	0.00
	105.0	0.10	193.35	105.0	-0.1	0.0	-0.1	0.10
	205.0	0.24	164.60	205.0	-0.4	0.0	-0.3	0.16
	305.0	0.31	123.23	305.0	-0.7	0.3	-0.8	0.21
	405.0	0.14	141.41	405.0	-1.0	0.6	-1.1	0.18
	505.0	0.33	184.09	505.0	-1.4	0.7	-1.5	0.25
	605.0	0.33	134.24	605.0	-1.8	0.8	-2.0	0.28
	705.0	0.23	212.23	705.0	-2.2	0.9	-2.4	0.36
	805.0	0.33	181.28	805.0	-2.7	0.8	-2.8	0.18
	905.0	0.38	228.20	905.0	-3.2	0.6	-3.1	0.29
	1,005.0	0.46	202.08	1,005.0	-3.8	0.2	-3.5	0.21

RECEIVED

AUG 03 2015



EOW Completion Report



Company:	Antero Resources	Local Co-ordinate Reference:	Well Ahouse Unit 2H
Project:	Doddridge County WV	TVD Reference:	Precision 522: 1005' GL + 18' KB @ 1023.0usft
Site:	Ahouse / Callie Pad	MD Reference:	Precision 522: 1005' GL + 18' KB @ 1023.0usft
Well:	Ahouse Unit 2H	North Reference:	Grid
Wellbore:	Original Wellpath	Survey Calculation Method:	Minimum Curvature
Design:	As Drilled	Database:	Oklahoma District

Survey

MD (usft)	Inc (°)	Azi (azimuth) (°)	TVD (usft)	N/S (usft)	E/W (usft)	V. Sec (usft)	DLeg (°/100usft)
1,105.0	0.21	239.77	1,105.0	-4.2	-0.1	-3.7	0.32
1,205.0	0.24	188.34	1,205.0	-4.5	-0.3	-3.9	0.20
1,305.0	0.33	206.60	1,305.0	-5.0	-0.5	-4.3	0.13
1,405.0	0.15	182.25	1,405.0	-5.4	-0.6	-4.6	0.20
1,505.0	0.37	232.21	1,505.0	-5.7	-0.9	-4.7	0.30
1,605.0	0.37	221.08	1,605.0	-6.2	-1.3	-4.9	0.07
1,705.0	0.21	226.14	1,705.0	-6.5	-1.7	-5.1	0.16
1,805.0	0.19	184.77	1,805.0	-6.8	-1.8	-5.3	0.14
1,905.0	0.49	198.82	1,905.0	-7.4	-2.0	-5.8	0.31
2,005.0	0.33	224.83	2,005.0	-8.0	-2.3	-6.2	0.24
2,105.0	0.21	121.78	2,105.0	-8.3	-2.4	-6.4	0.43
2,205.0	0.12	223.23	2,205.0	-8.5	-2.3	-6.6	0.26
2,305.0	0.13	224.44	2,305.0	-8.6	-2.4	-6.7	0.01
2,405.0	0.28	216.93	2,405.0	-8.9	-2.7	-6.8	0.15
2,505.0	0.38	188.77	2,505.0	-9.4	-2.9	-7.2	0.19
2,605.0	1.27	81.91	2,605.0	-9.6	-1.8	-7.8	1.43
2,705.0	3.77	85.15	2,704.9	-9.2	2.6	-9.4	2.50
2,805.0	6.57	83.92	2,804.4	-8.3	11.5	-12.5	2.80
2,905.0	6.66	87.64	2,903.8	-7.4	23.0	-16.8	0.44
3,005.0	6.58	92.35	3,003.1	-7.4	34.5	-21.9	0.55
3,105.0	6.49	92.09	3,102.5	-7.9	45.9	-27.3	0.09
3,205.0	6.11	92.77	3,201.9	-8.3	56.9	-32.6	0.39
3,305.0	5.90	90.32	3,301.3	-8.6	67.3	-37.4	0.33
3,405.0	5.83	98.21	3,400.8	-9.4	77.5	-42.6	0.81
3,505.0	5.79	99.90	3,500.3	-11.0	87.5	-48.4	0.18
3,605.0	5.77	97.52	3,599.8	-12.5	97.4	-54.2	0.24
3,705.0	5.73	96.86	3,699.3	-13.8	107.4	-59.7	0.08
3,805.0	5.81	97.53	3,798.8	-15.0	117.3	-65.2	0.10
3,905.0	7.28	92.12	3,898.1	-15.9	128.7	-71.0	1.59
4,005.0	10.06	89.40	3,996.9	-16.1	143.8	-77.8	2.81
4,105.0	11.71	90.34	4,095.1	-16.0	162.6	-86.1	1.66
4,205.0	14.01	88.81	4,192.6	-15.8	184.9	-95.7	2.32
4,305.0	16.35	88.60	4,289.1	-15.2	211.1	-106.7	2.34
4,405.0	19.59	85.15	4,384.2	-13.5	241.9	-118.7	3.41
4,505.0	22.03	83.66	4,477.7	-10.0	277.2	-131.2	2.50
4,605.0	23.65	83.36	4,569.9	-5.6	315.8	-144.2	1.62
4,705.0	24.05	84.12	4,661.3	-1.2	356.0	-158.0	0.50
4,805.0	23.99	85.55	4,752.7	2.5	396.5	-172.6	0.59
4,905.0	25.44	84.22	4,843.5	6.2	438.1	-187.6	1.55
5,005.0	26.22	82.71	4,933.5	11.2	481.4	-202.2	1.02
5,105.0	26.67	80.52	5,023.1	17.7	525.5	-215.8	1.07
5,205.0	25.39	79.92	5,112.9	25.1	568.7	-228.2	1.31
5,305.0	25.35	80.60	5,203.3	32.4	610.9	-240.3	0.29
5,405.0	25.04	82.91	5,293.8	38.5	653.1	-253.4	1.03

RECEIVED

AUG 03 2015



WV GEOLOGICAL SURVEY
MORGANTOWN, WV

EOW Completion Report



Company:	Antero Resources	Local Co-ordinate Reference:	Well Ahouse Unit 2H
Project:	Doddridge County WV	TVD Reference:	Precision 522: 1005' GL + 18' KB @ 1023.0usft
Site:	Ahouse / Callie Pad	MD Reference:	Precision 522: 1005' GL + 18' KB @ 1023.0usft
Well:	Ahouse Unit 2H	North Reference:	Grid
Wellbore:	Original Wellpath	Survey Calculation Method:	Minimum Curvature
Design:	As Drilled	Database:	Oklahoma District

Survey								
MD (usft)	Inc (°)	Azi (azimuth) (°)		TVD (usft)	N/S (usft)	E/W (usft)	V. Sec (usft)	DLeg (°/100usft)
5,505.0	25.69	85.07	85.07	5,384.1	43.0	695.7	-268.1	1.13
5,605.0	25.07	84.67	84.67	5,474.5	46.8	738.4	-283.5	0.64
5,705.0	25.04	84.86	84.86	5,565.1	50.7	780.5	-298.6	0.09
5,805.0	26.78	87.25	87.25	5,655.0	53.6	824.1	-315.2	2.03
5,905.0	27.01	86.78	86.78	5,744.2	56.0	869.3	-333.0	0.31
6,005.0	27.15	82.77	82.77	5,833.2	60.1	914.6	-349.2	1.83
6,105.0	27.00	80.55	80.55	5,922.3	66.7	959.6	-363.2	1.02
6,190.0	26.41	80.07	80.07	5,998.2	73.2	997.3	-374.0	0.74
6,244.0	25.93	78.04	78.04	6,046.7	77.7	1,020.7	-380.3	1.88
6,275.0	25.37	75.87	75.87	6,074.6	80.7	1,033.7	-383.3	3.53
6,306.0	24.47	70.34	70.34	6,102.7	84.5	1,046.2	-385.4	8.05
6,337.0	24.01	64.63	64.63	6,131.0	89.4	1,058.0	-386.2	7.70
6,367.0	24.36	59.47	59.47	6,158.4	95.1	1,068.8	-385.8	7.14
6,398.0	25.62	54.69	54.69	6,186.5	102.2	1,079.8	-384.3	7.68
6,421.0	26.41	51.77	51.77	6,207.2	108.3	1,087.9	-382.4	6.55
Sycamore								
6,430.0	26.74	50.67	50.67	6,215.2	110.8	1,091.0	-381.5	6.55
6,460.0	28.59	47.09	47.09	6,241.8	120.0	1,101.5	-377.9	8.29
6,491.0	31.55	42.54	42.54	6,268.6	131.0	1,112.4	-372.9	12.05
6,522.0	34.37	36.68	36.68	6,294.6	144.0	1,123.1	-365.9	13.72
6,553.0	37.10	32.76	32.76	6,319.8	158.9	1,133.4	-357.1	11.49
6,584.0	39.72	26.96	26.96	6,344.1	175.6	1,143.0	-346.3	14.36
6,615.0	42.66	23.12	23.12	6,367.4	194.1	1,151.6	-333.5	12.51
6,630.0	44.05	20.87	20.87	6,378.3	203.6	1,155.4	-326.6	13.86
Middlesex								
6,646.0	45.58	18.59	18.59	6,389.7	214.2	1,159.2	-318.8	13.86
6,677.0	48.13	12.85	12.85	6,410.9	236.0	1,165.3	-301.9	15.81
6,707.0	50.08	7.17	7.17	6,430.5	258.3	1,169.3	-283.6	15.71
6,738.0	52.76	2.47	2.47	6,449.9	282.5	1,171.3	-262.9	14.67
6,769.0	55.37	358.36	358.36	6,468.1	307.5	1,171.4	-240.4	13.64
6,800.0	58.30	354.86	354.86	6,485.0	333.4	1,169.9	-216.5	13.36
6,831.0	61.89	352.15	352.15	6,500.5	360.1	1,166.8	-191.2	13.84
6,834.0	62.27	351.81	351.81	6,501.9	362.7	1,166.5	-188.7	16.07
Burkett								
6,862.0	65.84	348.77	348.77	6,514.1	387.6	1,162.2	-164.5	16.07
6,893.0	68.63	345.19	345.19	6,526.1	415.4	1,155.8	-136.7	13.94
6,901.0	68.98	344.27	344.27	6,529.0	422.6	1,153.8	-129.4	11.53
Tully								
6,923.0	69.95	341.77	341.77	6,536.7	442.3	1,147.8	-109.1	11.53
6,954.0	72.39	336.65	336.65	6,546.7	469.7	1,137.4	-79.9	17.50
6,985.0	76.14	334.22	334.22	6,555.2	496.8	1,125.0	-50.0	14.26
7,004.0	78.70	333.68	333.68	6,559.3	513.5	1,116.8	-31.5	13.73
Marcellus								
7,016.0	80.31	333.35	333.35	6,561.5	524.1	1,111.6	-19.7	13.73
7,047.0	83.67	332.23	332.23	6,565.8	551.3	1,097.5	11.0	11.41

RECEIVED

AUG 03 2015



WV GEOLOGICAL SURVEY
MORGANTOWN, WV

EOW Completion Report



Company: Antero Resources
Project: Doddridge County WV
Site: Ahouse / Callie Pad
Well: Ahouse Unit 2H
Wellbore: Original Wellpath
Design: As Drilled

Local Co-ordinate Reference: Well Ahouse Unit 2H
TVD Reference: Precision 522: 1005' GL + 18' KB @ 1023.0usft
MD Reference: Precision 522: 1005' GL + 18' KB @ 1023.0usft
North Reference: Grid
Survey Calculation Method: Minimum Curvature
Database: Oklahoma District

Survey

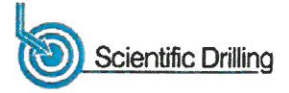
MD (usft)	Inc (°)	Azi (azimuth) (°)	TVD (usft)	N/S (usft)	E/W (usft)	V. Sec (usft)	DLeg (°/100usft)
7,078.0	85.60	333.12	6,568.7	578.8	1,083.4	41.9	6.85
7,109.0	85.91	332.81	6,571.0	606.3	1,069.3	72.8	1.41
7,202.0	88.46	331.32	6,575.6	688.4	1,025.8	165.6	3.17
7,294.0	90.04	331.23	6,576.8	769.0	981.6	257.5	1.72
7,387.0	90.48	331.75	6,576.3	850.7	937.2	350.4	0.73
7,479.0	89.60	333.51	6,576.3	932.4	894.9	442.4	2.14
7,572.0	89.60	333.55	6,576.9	1,015.7	853.5	535.4	0.04
7,665.0	88.81	332.90	6,578.2	1,098.7	811.6	628.4	1.10
7,757.0	88.90	332.72	6,580.1	1,180.5	769.5	720.3	0.22
7,850.0	90.40	336.59	6,580.6	1,264.6	729.7	813.3	4.46
7,942.0	90.48	335.62	6,579.9	1,348.7	692.5	905.2	1.06
8,035.0	90.57	334.39	6,579.1	1,433.0	653.2	998.2	1.33
8,128.0	89.78	334.57	6,578.8	1,516.9	613.1	1,091.2	0.87
8,220.0	89.78	334.13	6,579.1	1,599.8	573.3	1,183.2	0.48
8,313.0	90.31	334.57	6,579.1	1,683.7	533.0	1,276.2	0.74
8,405.0	90.40	335.89	6,578.5	1,767.2	494.5	1,368.2	1.44
8,498.0	89.60	334.22	6,578.5	1,851.5	455.3	1,461.1	1.99
8,590.0	89.69	335.80	6,579.1	1,934.9	416.4	1,553.1	1.72
8,683.0	89.43	332.81	6,579.8	2,018.7	376.1	1,646.1	3.23
8,776.0	89.78	331.05	6,580.4	2,100.7	332.3	1,739.0	1.93
8,868.0	90.40	330.00	6,580.3	2,180.8	287.1	1,830.9	1.33
8,961.0	90.54	331.04	6,579.5	2,261.8	241.3	1,923.7	1.13
9,056.0	89.52	333.60	6,579.5	2,345.9	197.2	2,018.7	2.90
9,150.0	88.99	335.01	6,580.7	2,430.6	156.4	2,112.7	1.60
9,244.0	89.52	335.62	6,581.9	2,516.0	117.2	2,206.6	0.86
9,338.0	90.48	336.15	6,581.9	2,601.8	78.8	2,300.6	1.17
9,433.0	89.78	335.97	6,581.7	2,688.6	40.2	2,395.5	0.76
9,528.0	90.13	334.22	6,581.8	2,774.8	0.2	2,490.5	1.88
9,623.0	90.57	332.99	6,581.2	2,859.9	-42.0	2,585.5	1.38
9,717.0	90.31	332.99	6,580.5	2,943.6	-84.7	2,679.4	0.28
9,812.0	90.31	332.28	6,579.9	3,028.0	-128.4	2,774.4	0.75
9,907.0	89.96	333.78	6,579.7	3,112.7	-171.5	2,869.4	1.62
10,002.0	90.92	333.60	6,579.0	3,197.8	-213.6	2,964.4	1.03
10,094.0	89.78	332.99	6,578.4	3,280.0	-254.9	3,056.4	1.41
10,187.0	89.25	333.25	6,579.2	3,362.9	-297.0	3,149.4	0.63
10,280.0	90.13	332.46	6,579.7	3,445.7	-339.4	3,242.4	1.27
10,372.0	89.43	333.60	6,580.1	3,527.7	-381.1	3,334.4	1.45
10,465.0	90.48	333.25	6,580.1	3,610.9	-422.7	3,427.4	1.19
10,557.0	89.34	333.60	6,580.3	3,693.1	-463.9	3,519.3	1.30
10,650.0	90.92	335.62	6,580.1	3,777.1	-503.8	3,612.3	2.76
10,742.0	92.07	335.36	6,577.7	3,860.8	-541.9	3,704.3	1.28
10,835.0	90.92	334.48	6,575.3	3,945.0	-581.3	3,797.2	1.56
10,927.0	89.43	333.51	6,575.0	4,027.7	-621.6	3,889.2	1.93
11,020.0	89.52	333.42	6,575.8	4,110.9	-663.2	3,982.2	0.14
11,113.0	90.31	332.99	6,576.0	4,193.9	-705.1	4,075.2	0.97

RECEIVED

AUG 03 2015



EOW Completion Report



Company: Antero Resources
Project: Doddridge County WV
Site: Ahouse / Callie Pad
Well: Ahouse Unit 2H
Wellbore: Original Wellpath
Design: As Drilled

Local Co-ordinate Reference: Well Ahouse Unit 2H
TVD Reference: Precision 522: 1005' GL + 18' KB @ 1023.0usft
MD Reference: Precision 522: 1005' GL + 18' KB @ 1023.0usft
North Reference: Grid
Survey Calculation Method: Minimum Curvature
Database: Oklahoma District

Survey

MD (usft)	Inc (°)	Azi (azimuth) (°)	TVD (usft)	N/S (usft)	E/W (usft)	V. Sec (usft)	DLeg (°/100usft)
11,205.0	90.40	332.63	6,575.4	4,275.8	-747.2	4,167.2	0.40
11,298.0	89.96	333.69	6,575.1	4,358.7	-789.1	4,260.2	1.23
11,390.0	90.98	334.73	6,574.3	4,441.6	-829.2	4,352.2	1.58
11,483.0	89.60	334.22	6,573.9	4,525.5	-869.2	4,445.2	1.58
11,576.0	89.78	333.78	6,574.4	4,609.1	-910.0	4,538.1	0.51
11,668.0	90.57	334.38	6,574.1	4,691.8	-950.2	4,630.1	1.08
11,761.0	89.43	334.04	6,574.1	4,775.5	-990.7	4,723.1	1.28
11,853.0	90.84	333.86	6,573.9	4,858.2	-1,031.1	4,815.1	1.55
11,946.0	89.87	335.01	6,573.3	4,942.1	-1,071.2	4,908.1	1.62
12,038.0	89.60	333.95	6,573.7	5,025.1	-1,110.8	5,000.1	1.19
12,131.0	90.31	333.34	6,573.8	5,108.4	-1,152.1	5,093.1	1.01
12,224.0	89.69	332.90	6,573.8	5,191.4	-1,194.2	5,186.1	0.82
12,316.0	90.48	332.55	6,573.7	5,273.2	-1,236.3	5,278.1	0.94
12,409.0	90.66	332.90	6,572.7	5,355.8	-1,279.0	5,371.1	0.42
12,501.0	89.60	334.22	6,572.5	5,438.2	-1,319.9	5,463.1	1.84
12,594.0	90.22	333.69	6,572.7	5,521.8	-1,360.8	5,556.1	0.88
12,687.0	89.34	333.78	6,573.0	5,605.1	-1,401.9	5,649.1	0.95
12,779.0	89.34	334.30	6,574.1	5,687.9	-1,442.2	5,741.1	0.57
12,872.0	90.22	333.51	6,574.4	5,771.4	-1,483.1	5,834.1	1.27
12,965.0	91.28	332.63	6,573.2	5,854.3	-1,525.2	5,927.0	1.48
13,057.0	89.36	333.09	6,572.7	5,936.1	-1,567.2	6,019.0	2.15
13,150.0	88.72	334.13	6,574.3	6,019.4	-1,608.5	6,112.0	1.31
13,242.0	89.25	335.89	6,575.9	6,102.8	-1,647.4	6,204.0	2.00
13,335.0	90.13	335.71	6,576.4	6,187.6	-1,685.5	6,296.9	0.97
13,427.0	91.01	335.45	6,575.5	6,271.4	-1,723.5	6,388.9	1.00
13,486.0	91.63	335.97	6,574.1	6,325.2	-1,747.8	6,447.8	1.37
13,550.0	91.63	335.97	6,572.3	6,383.6	-1,773.8	6,511.7	0.00

Design Annotations

Measured Depth (usft)	Vertical Depth (usft)	Local Coordinates		Comment
		+N/-S (usft)	+E/-W (usft)	
6,421.0	6,207.2	108.3	1,087.9	Sycamore
6,630.0	6,378.3	203.6	1,155.4	Middlesex
6,834.0	6,501.9	362.7	1,166.5	Burkett
6,901.0	6,529.0	422.6	1,153.8	Tully
7,004.0	6,559.3	513.5	1,116.8	Marcellus

Checked By: _____ Approved By: _____ Date: _____