

Antero Resources
 Holden Unit 2H
 Doddridge County WV
 Northing: 14270672.18
 Easting: 1727282.25
 As Drilled

WELL DETAILS: Holden Unit 2H

+N/-S	+E/-W	Northing	Ground Level:	1180.0	Easting	Latitude	Longitude
0.0	0.0	14270672.18			1727282.25	39° 17' 53.658 N	80° 41' 34.622 W

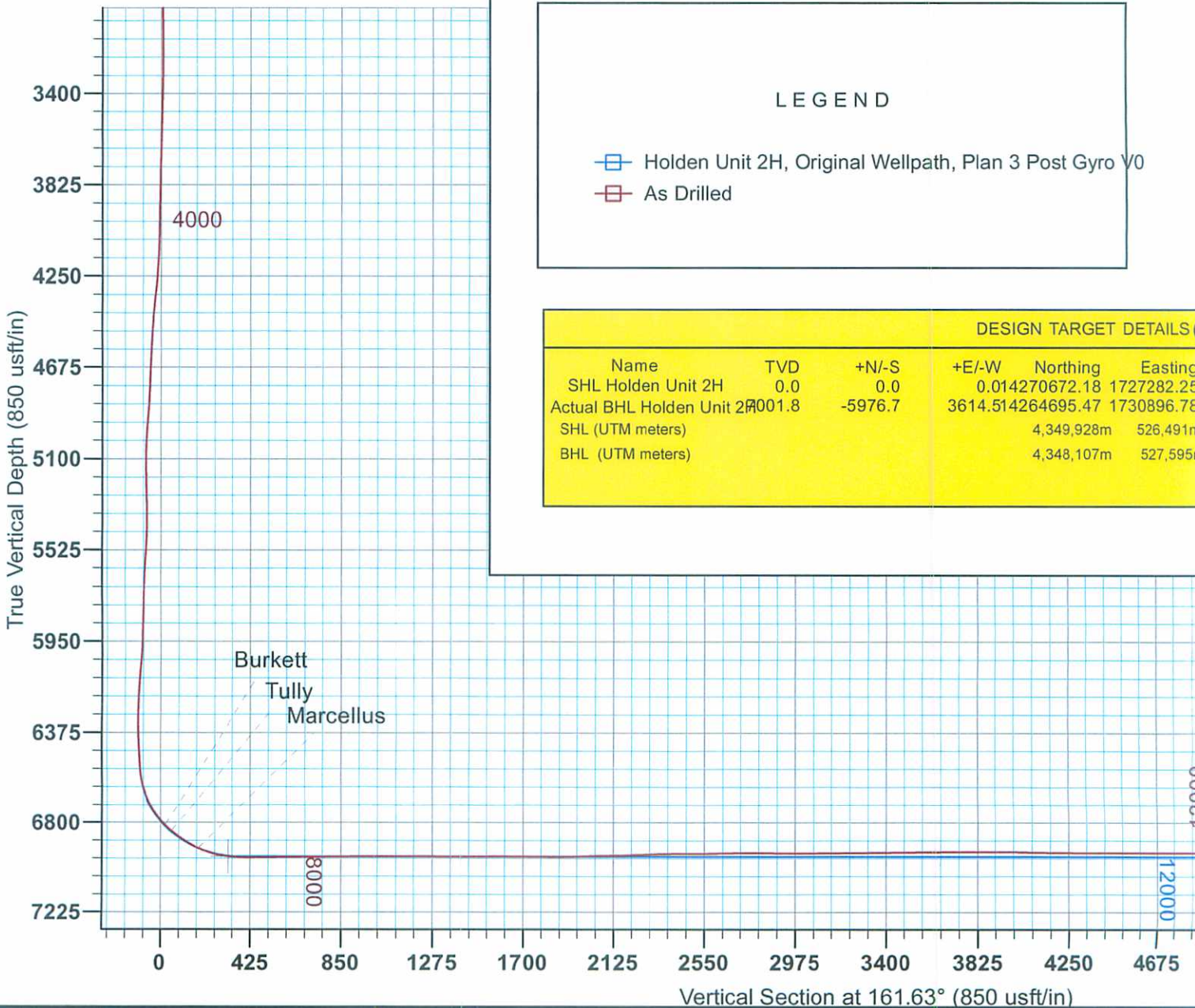
PROJECT DETAILS: Doddridge County WV

Geodetic System: Universal Transverse Mercator (US Survey Feet)
 Datum: NAD 1927 (NADCON CONUS)
 Ellipsoid: Clarke 1866
 Zone: Zone 17N (84 W to 78 W)
 System Datum: Mean Sea Level

Co-ordinal
 Vertical
 Section
 Measure
 C

LEGEND

- Holden Unit 2H, Original Wellpath, Plan 3 Post Gyro V0
- As Drilled



04/29/2022

17-06203



To convert Magnetic North to Grid, Subtract 8.69°
To convert True North to Grid, Subtract 0.19°

Azimuths to Grid North
True North: -0.19°
Magnetic North: -8.69°

Magnetic Field
Strength: 52412.2snT
Dip Angle: 66.90°
Date: 6/10/2013
Model: IGRF2010

REFERENCE INFORMATION

(NE) Reference: Well Holden Unit 2H, Grid North
(TVD) Reference: Holden 2H 1180 GL + 25 KB @ 1205.0usft (Original Well Elev)
(VS) Reference: Slot - (0.0N, 0.0E)
Depth Reference: Holden 2H 1180 GL + 25 KB @ 1205.0usft (Original Well Elev)
Calculation Method: Minimum Curvature

Genie Lightfoot
10:45, July 24 2013

Scientific Drilling
421 South Eagle Lane
Oklahoma City, OK

NAD 83)	
Latitude	Longitude
39° 17' 53.658 N	100° 41' 34.622 W
39° 16' 54.439 N	100° 40' 48.896 W

