

JUN 01 2015

WV GEOLOGICAL SURVEY
MORGANTOWN, WV



Antero Resources
Gainer Unit 1H
Doddridge County WV
Northing: 14260748.87
Easting: 1751056.36
As Drilled

PROJECT DETAILS: Doddridge County WV
Genie Lightfoot
14:44, January 02 2014
Scientific Drilling
421 South Eagle Lane
Oklahoma City, OK



WELL DETAILS: Gainer Unit 1H
Ground Level: 1364.0
Slot
Northing: 14260748.87
Easting: 1751056.36
Longitude: 36° 32' 6.44" W
Latitude: 16° 14' 6.34" N

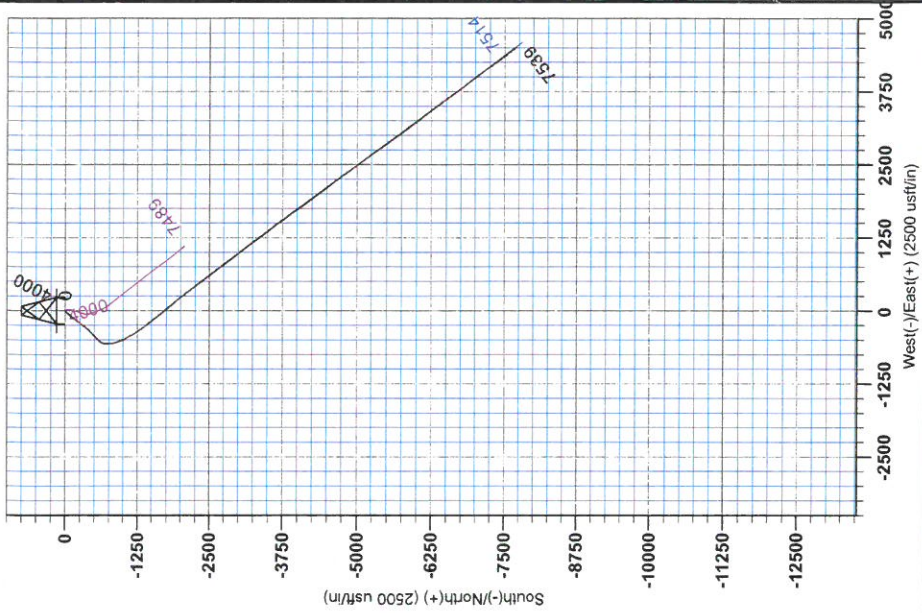
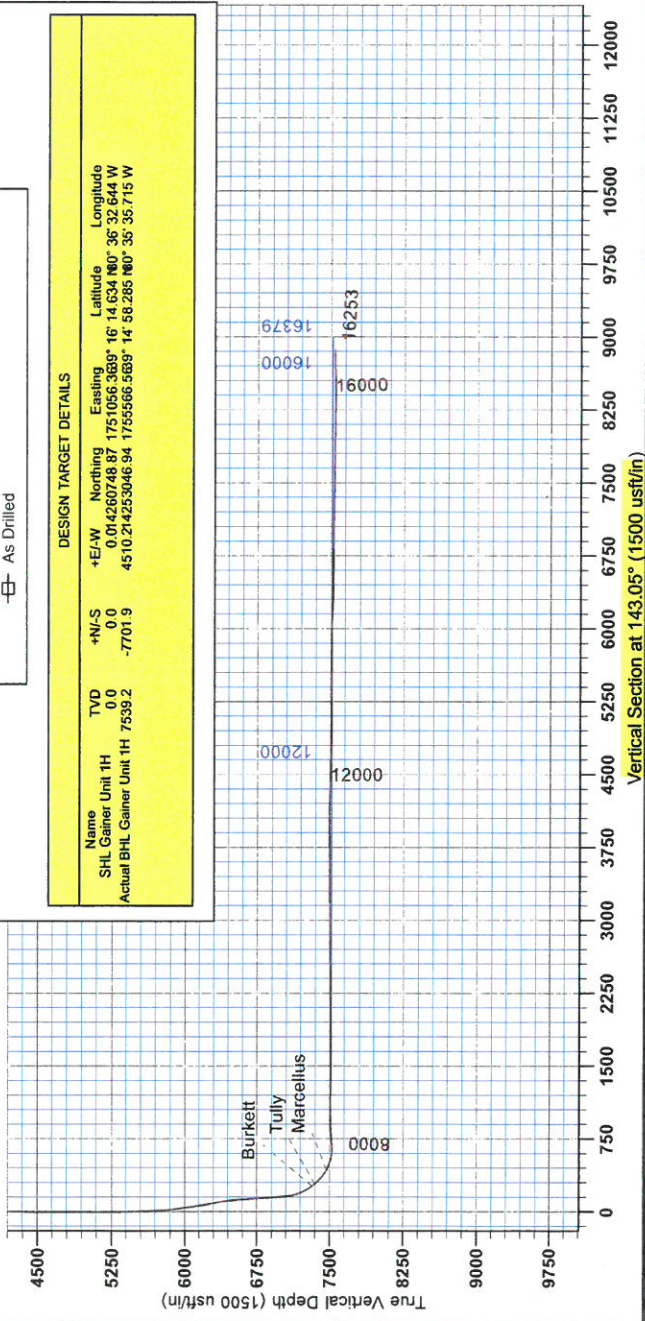


To convert Magnetic North to Grid, Subtract 8.81°
To convert True North to Grid, Subtract 0.25°
Azimuth to Grid North: True North: -0.25°
Magnetic North: -8.81°
Magnetic Field Strength: 57,868.08 nT
Dip Angle: 66.0213°
Date: 6/2/2013
Model: IGRF2010

LEGEND
◇ Gainer Unit 2H, Original Wellpath, As Drilled V0
✕ Gainer Unit 1H, Original Wellpath, Plan 6 V0
□ As Drilled

DESIGN TARGET DETAILS

Name	TVD	+N/-S	+E/-W	Northing	Easting	Latitude	Longitude
SHL Gainer Unit 1H	0.0	0.0	0.0	0.01426074887	1751056.3689	16° 14' 6.34" N	36° 32' 6.44" W
Actual BHL Gainer Unit 1H	7539.2	-7701.9		4510.214253046	94.17555665689	14° 58' 28.5" N	35° 35' 7.15" W





RECEIVED
JUN 01 2015
WV GEOLOGICAL SURVEY
MORGANTOWN, WV

Antero Resources

Doddridge County WV
Gainer/Irons Pad
Gainer Unit 1H
Original Wellpath

Design: As Drilled

EOW Completion Report

02 January, 2014



RECEIVED
JUN 01 2015



EOW Completion Report



Company: Antero Resources
Project: Doddridge County WV
Site: Gainer/Irons Pad
Well: Gainer Unit 1H
Wellbore: Original Wellpath
Design: As Drilled

Local Co-ordinate Reference: Well Gainer Unit 1H
TVD Reference: Gainer 1H 1364 GL + 25 KB @ 1389.0usft
MD Reference: Gainer 1H 1364 GL + 25 KB @ 1389.0usft
North Reference: Grid
Survey Calculation Method: Minimum Curvature
Database: Oklahoma District

Project	Doddridge County WV, McClellan District		
Map System:	Universal Transverse Mercator (US Survey Fee	System Datum:	Mean Sea Level
Geo Datum:	NAD 1927 (NADCON CONUS)		
Map Zone:	Zone 17N (84 W to 78 W)		

Site Gainer/Irons Pad

Site Position: Northing: 14,260,748.87 usft Latitude: 39° 16' 14.634 N
From: Map Easting: 1,751,056.36 usft Longitude: 80° 36' 32.644 W
Position Uncertainty: 0.0 usft Slot Radius: 13-3/16" Grid Convergence: 0.25 °

Well Gainer Unit 1H, Marcellus

Well Position +N/-S 0.0 usft Northing: 14,260,748.87 usft Latitude: 39° 16' 14.634 N
 +E/-W 0.0 usft Easting: 1,751,056.36 usft Longitude: 80° 36' 32.644 W
Position Uncertainty 2.0 usft Wellhead Elevation: 1,389.0 usft Ground Level: 1,364.0 usft

Wellbore	Original Wellpath				
Magnetics	Model Name	Sample Date	Declination (°)	Dip Angle (°)	Field Strength (nT)
	IGRF2010	9/4/2013	-8.56	66.85	52,358

Design As Drilled

Audit Notes:

Version: 1.0 **Phase:** ACTUAL **Tie On Depth:** 0.0

Vertical Section:	Depth From (TVD) (usft)	+N/-S (usft)	+E/-W (usft)	Direction (°)
	0.0	0.0	0.0	143.05

Survey Program	Date 1/2/2014				
From (usft)	To (usft)	Survey (Wellbore)	Tool Name	Description	
112.0	7,155.0	Survey #2 Def Gyro to KOP (Original Well	SDI Standard Keeper	Scientific Drilling Intl. Standard Wireline Keeper	
7,273.0	16,253.0	Survey #3 MWD (Original Wellpath)	SDI MWD	Scientific Drilling Intl. MWD - Standard ver 1.0.1	

MD (usft)	Inc (°)	Azi (azimuth) (°)	TVD (usft)	N/S (usft)	E/W (usft)	V. Sec (usft)	DLeg (°/100usft)
0.0	0.00	0.00	0.0	0.0	0.0	0.0	0.00
112.0	0.14	26.55	112.0	0.1	0.1	-0.1	0.12
212.0	0.26	19.46	212.0	0.4	0.2	-0.2	0.12
312.0	0.28	22.04	312.0	0.9	0.4	-0.5	0.02
412.0	0.30	33.03	412.0	1.3	0.6	-0.7	0.06
512.0	0.22	49.97	512.0	1.7	0.9	-0.8	0.11
612.0	0.14	37.11	612.0	1.9	1.1	-0.9	0.09
712.0	0.20	15.14	712.0	2.2	1.2	-1.0	0.09
812.0	0.27	32.76	812.0	2.5	1.4	-1.2	0.10
912.0	0.21	67.23	912.0	2.8	1.7	-1.2	0.15
1,012.0	0.24	68.18	1,012.0	2.9	2.1	-1.1	0.03



RECEIVED
JUN 01 2015
WV GEOLOGICAL SURVEY
MORGANTOWN, WV

EOW Completion Report



Company: Antero Resources
Project: Doddridge County WV
Site: Gainer/Irons Pad
Well: Gainer Unit 1H
Wellbore: Original Wellpath
Design: As Drilled

Local Co-ordinate Reference: Well Gainer Unit 1H
TVD Reference: Gainer 1H 1364 GL + 25 KB @ 1389.0usft
MD Reference: Gainer 1H 1364 GL + 25 KB @ 1389.0usft
North Reference: Grid
Survey Calculation Method: Minimum Curvature
Database: Oklahoma District

Survey

MD (usft)	Inc (°)	Azi (azimuth) (°)	TVD (usft)	N/S (usft)	E/W (usft)	V. Sec (usft)	DLeg (°/100usft)
1,112.0	0.07	343.38	1,112.0	3.1	2.2	-1.1	0.24
1,212.0	0.13	33.99	1,212.0	3.2	2.3	-1.2	0.10
1,312.0	0.28	51.49	1,312.0	3.5	2.5	-1.3	0.16
1,412.0	0.22	74.14	1,412.0	3.7	2.9	-1.2	0.11
1,512.0	0.06	101.43	1,512.0	3.7	3.1	-1.1	0.17
1,612.0	0.20	52.14	1,612.0	3.8	3.3	-1.1	0.17
1,712.0	0.20	64.67	1,712.0	4.0	3.6	-1.0	0.04
1,812.0	0.23	75.61	1,812.0	4.1	4.0	-0.9	0.05
1,912.0	0.35	100.56	1,912.0	4.1	4.5	-0.6	0.17
2,012.0	0.40	97.60	2,012.0	4.0	5.1	-0.1	0.05
2,112.0	0.38	87.58	2,112.0	4.0	5.8	0.3	0.07
2,212.0	0.28	78.78	2,212.0	4.1	6.4	0.6	0.11
2,312.0	0.28	60.39	2,312.0	4.2	6.8	0.7	0.09
2,412.0	0.38	68.94	2,412.0	4.5	7.3	0.9	0.11
2,512.0	0.38	74.24	2,512.0	4.7	8.0	1.1	0.04
2,612.0	0.11	34.40	2,612.0	4.8	8.3	1.2	0.30
2,712.0	0.12	229.03	2,712.0	4.8	8.3	1.1	0.23
2,812.0	0.28	54.31	2,812.0	4.9	8.4	1.1	0.40
2,912.0	0.11	295.48	2,912.0	5.1	8.6	1.1	0.35
3,012.0	0.15	297.98	3,012.0	5.2	8.4	0.9	0.04
3,112.0	0.29	287.95	3,112.0	5.3	8.0	0.5	0.14
3,212.0	0.34	278.50	3,212.0	5.5	7.5	0.1	0.07
3,312.0	0.32	299.76	3,312.0	5.7	6.9	-0.4	0.12
3,412.0	0.24	306.64	3,412.0	5.9	6.5	-0.8	0.09
3,512.0	0.19	290.82	3,512.0	6.1	6.2	-1.2	0.08
3,612.0	0.15	344.61	3,612.0	6.3	6.0	-1.4	0.16
3,712.0	0.15	344.18	3,712.0	6.5	5.9	-1.7	0.00
3,812.0	0.19	327.90	3,812.0	6.8	5.8	-1.9	0.06
3,912.0	0.16	330.69	3,912.0	7.1	5.7	-2.3	0.03
4,012.0	0.25	294.43	4,012.0	7.3	5.4	-2.6	0.15
4,112.0	0.16	320.72	4,112.0	7.5	5.1	-2.9	0.13
4,212.0	0.16	326.65	4,212.0	7.7	4.9	-3.2	0.02
4,312.0	0.06	326.03	4,312.0	7.9	4.8	-3.4	0.10
4,412.0	0.11	356.21	4,412.0	8.0	4.8	-3.5	0.07
4,512.0	0.16	10.24	4,512.0	8.2	4.8	-3.7	0.06
4,612.0	0.35	24.61	4,612.0	8.6	5.0	-3.9	0.20
4,712.0	0.66	41.71	4,712.0	9.4	5.5	-4.2	0.34
4,812.0	0.63	42.71	4,812.0	10.2	6.2	-4.4	0.03
4,912.0	0.75	42.88	4,911.9	11.1	7.0	-4.6	0.12
5,012.0	0.44	264.17	5,011.9	11.5	7.1	-4.9	1.12
5,112.0	1.98	237.26	5,111.9	10.5	5.3	-5.3	1.60
5,212.0	3.34	231.28	5,211.8	7.8	1.5	-5.3	1.39
5,312.0	5.98	225.42	5,311.5	2.3	-4.4	-4.5	2.68
5,412.0	8.76	222.41	5,410.6	-7.0	-13.3	-2.4	2.81



RECEIVED
JUN 01 2015
WV GEOLOGICAL SURVEY
GANTOWN, WV

EOW Completion Report



Company: Antero Resources
Project: Doddridge County WV
Site: Gainer/Irons Pad
Well: Gainer Unit 1H
Wellbore: Original Wellpath
Design: As Drilled

Local Co-ordinate Reference: Well Gainer Unit 1H
TVD Reference: Gainer 1H 1364 GL + 25 KB @ 1389.0usft
MD Reference: Gainer 1H 1364 GL + 25 KB @ 1389.0usft
North Reference: Grid
Survey Calculation Method: Minimum Curvature
Database: Oklahoma District

Survey

MD (usft)	Inc (°)	Azi (azimuth) (°)	TVD (usft)	N/S (usft)	E/W (usft)	V. Sec (usft)	DLeg (°/100usft)
5,512.0	11.54	221.31	5,509.1	-20.1	-25.0	1.0	2.79
5,612.0	14.64	223.77	5,606.5	-36.8	-40.4	5.1	3.15
5,712.0	17.27	226.76	5,702.6	-56.1	-59.9	8.8	2.75
5,812.0	21.25	221.63	5,797.0	-79.8	-82.8	14.0	4.32
5,912.0	25.58	219.40	5,888.7	-110.0	-108.6	22.7	4.42
6,012.0	28.55	217.68	5,977.8	-145.6	-136.9	34.1	3.07
6,112.0	30.27	219.28	6,064.9	-184.1	-167.4	46.4	1.89
6,212.0	31.73	218.80	6,150.6	-224.1	-199.9	58.9	1.48
6,312.0	31.72	215.01	6,235.7	-266.1	-231.4	73.5	1.99
6,412.0	30.04	215.53	6,321.5	-308.0	-261.1	89.2	1.70
6,512.0	27.93	215.52	6,409.0	-347.4	-289.2	103.8	2.11
6,612.0	26.57	220.40	6,497.9	-383.5	-317.3	115.7	2.61
6,712.0	28.31	226.32	6,586.6	-416.9	-349.0	123.4	3.23
6,812.0	28.83	227.00	6,674.4	-449.8	-383.8	128.7	0.61
6,912.0	28.81	225.22	6,762.1	-483.2	-418.5	134.6	0.86
7,012.0	28.20	225.29	6,849.9	-516.8	-452.4	141.0	0.61
7,112.0	27.84	224.29	6,938.2	-550.1	-485.5	147.8	0.59
7,155.0	27.85	223.87	6,976.2	-564.5	-499.5	150.9	0.46
7,273.0	26.45	222.04	7,081.2	-603.9	-536.2	160.3	1.38
7,305.0	26.64	210.79	7,109.9	-615.4	-544.6	164.4	15.70
7,337.0	28.16	202.78	7,138.3	-628.5	-551.2	170.9	12.45
7,369.0	29.56	197.40	7,166.3	-643.0	-556.5	179.4	9.22
7,401.0	31.60	191.49	7,193.9	-658.8	-560.5	189.5	11.35
7,434.0	34.03	186.40	7,221.6	-676.4	-563.3	202.0	11.13
7,466.0	35.94	183.19	7,247.8	-694.7	-564.8	215.7	8.29
7,498.0	38.89	180.68	7,273.3	-714.1	-565.4	230.8	10.38
7,530.0	40.38	180.29	7,297.9	-734.5	-565.6	247.0	4.72
7,561.0	40.14	180.35	7,321.6	-754.6	-565.7	263.0	0.79
Burkett							
7,562.0	40.13	180.35	7,322.3	-755.2	-565.7	263.5	0.79
7,594.0	42.61	176.40	7,346.3	-776.3	-565.1	280.7	11.25
7,598.0	43.05	175.78	7,349.3	-779.1	-564.9	283.0	15.17
Tully							
7,627.0	46.31	171.58	7,369.9	-799.3	-562.7	300.6	15.17
7,659.0	49.26	167.92	7,391.4	-822.6	-558.4	321.7	12.52
7,691.0	52.13	164.86	7,411.7	-846.7	-552.6	344.5	11.63
7,723.0	54.94	163.05	7,430.7	-871.4	-545.5	368.5	9.89
7,755.0	57.83	161.40	7,448.4	-896.8	-537.3	393.7	10.00
7,787.0	61.57	160.20	7,464.5	-922.9	-528.2	420.0	12.13
7,800.0	62.88	159.57	7,470.6	-933.7	-524.3	431.0	10.96
Marcellus							
7,819.0	64.80	158.67	7,479.0	-949.6	-518.2	447.4	10.96
7,851.0	68.42	156.98	7,491.7	-976.8	-507.1	475.8	12.31
7,884.0	71.92	154.88	7,502.9	-1,005.1	-494.5	506.0	12.18
7,916.0	75.06	152.56	7,512.0	-1,032.6	-480.9	536.2	12.02



RECEIVED

JUN 01 2015

WV GEOLOGICAL SURVEY
ORGAN TOWN, WV

EOW Completion Report



Company: Antero Resources
Project: Doddridge County WV
Site: Gainer/Irons Pad
Well: Gainer Unit 1H
Wellbore: Original Wellpath
Design: As Drilled

Local Co-ordinate Reference: Well Gainer Unit 1H
TVD Reference: Gainer 1H 1364 GL + 25 KB @ 1389.0usft
MD Reference: Gainer 1H 1364 GL + 25 KB @ 1389.0usft
North Reference: Grid
Survey Calculation Method: Minimum Curvature
Database: Oklahoma District

Survey

MD (usft)	Inc (°)	Azi (azimuth) (°)	TVD (usft)	N/S (usft)	E/W (usft)	V. Sec (usft)	DLeg (°/100usft)
7,948.0	80.00	151.45	7,518.9	-1,060.2	-466.2	567.0	15.80
7,976.0	84.83	150.74	7,522.6	-1,084.5	-452.8	594.5	17.43
8,012.0	91.21	150.00	7,523.8	-1,115.7	-435.0	630.2	17.84
8,044.0	91.68	150.19	7,523.0	-1,143.5	-419.1	661.9	1.58
8,109.0	93.66	148.80	7,520.0	-1,199.4	-386.1	726.4	3.72
8,178.0	93.73	147.56	7,515.5	-1,257.9	-349.8	795.0	1.80
8,274.0	92.95	144.75	7,509.9	-1,337.5	-296.4	890.7	3.03
8,370.0	89.26	144.04	7,508.1	-1,415.5	-240.6	986.6	3.91
8,467.0	90.40	142.99	7,508.4	-1,493.5	-182.9	1,083.6	1.60
8,563.0	88.12	141.12	7,509.6	-1,569.2	-123.9	1,179.6	3.07
8,660.0	88.42	139.12	7,512.5	-1,643.6	-61.7	1,276.4	2.08
8,756.0	88.82	138.25	7,514.9	-1,715.7	1.7	1,372.1	1.00
8,853.0	91.51	142.17	7,514.6	-1,790.2	63.7	1,469.0	4.90
8,949.0	91.07	140.81	7,512.4	-1,865.3	123.5	1,564.9	1.49
9,046.0	92.18	142.82	7,509.7	-1,941.5	183.4	1,661.8	2.37
9,142.0	90.01	141.99	7,507.8	-2,017.6	242.0	1,757.8	2.42
9,238.0	89.53	143.50	7,508.2	-2,094.0	300.1	1,853.8	1.65
9,335.0	90.34	144.52	7,508.3	-2,172.4	357.1	1,950.8	1.34
9,431.0	90.17	142.00	7,507.9	-2,249.4	414.5	2,046.8	2.63
9,528.0	89.97	140.90	7,507.8	-2,325.2	474.9	2,143.7	1.15
9,617.0	91.24	143.09	7,506.8	-2,395.3	529.7	2,232.7	2.84
9,708.0	91.34	141.74	7,504.8	-2,467.4	585.2	2,323.7	1.49
9,799.0	90.10	143.38	7,503.6	-2,539.7	640.5	2,414.7	2.26
9,888.0	90.50	142.89	7,503.2	-2,610.9	693.9	2,503.7	0.71
9,979.0	90.34	142.88	7,502.5	-2,683.5	748.8	2,594.7	0.18
10,069.0	91.11	144.84	7,501.4	-2,756.1	801.9	2,684.6	2.34
10,159.0	90.00	142.39	7,500.5	-2,828.6	855.3	2,774.6	2.99
10,251.0	89.97	143.51	7,500.5	-2,902.0	910.7	2,866.6	1.22
10,341.0	90.47	142.64	7,500.2	-2,973.9	964.8	2,956.6	1.11
10,432.0	91.01	142.70	7,499.0	-3,046.3	1,020.0	3,047.6	0.60
10,523.0	90.67	141.75	7,497.7	-3,118.2	1,075.7	3,138.6	1.11
10,614.0	90.34	141.65	7,496.9	-3,189.6	1,132.1	3,229.6	0.38
10,710.0	90.30	144.39	7,496.3	-3,266.3	1,189.8	3,325.5	2.85
10,807.0	89.77	142.17	7,496.3	-3,344.1	1,247.8	3,422.5	2.35
10,903.0	90.37	144.18	7,496.2	-3,420.9	1,305.4	3,518.5	2.19
11,000.0	90.34	144.09	7,495.6	-3,499.5	1,362.2	3,615.5	0.10
11,096.0	90.47	140.73	7,494.9	-3,575.6	1,420.8	3,711.5	3.50
11,192.0	91.51	142.40	7,493.2	-3,650.7	1,480.4	3,807.4	2.05
11,289.0	89.97	144.64	7,492.0	-3,728.7	1,538.1	3,904.4	2.80
11,385.0	89.60	144.00	7,492.3	-3,806.7	1,594.1	4,000.4	0.77
11,482.0	90.44	145.32	7,492.3	-3,885.8	1,650.2	4,097.3	1.61
11,578.0	89.90	146.16	7,492.0	-3,965.2	1,704.2	4,193.2	1.04
11,674.0	87.58	144.75	7,494.1	-4,044.2	1,758.6	4,289.1	2.83
11,771.0	86.54	142.29	7,499.1	-4,122.1	1,816.2	4,386.0	2.75

RECEIVED
JUN 01 2015



EOW Completion Report



Company: Antero Resources
Project: Doddridge County WV
Site: Gainer/Irons Pad
Well: Gainer Unit 1H
Wellbore: Original Wellpath
Design: As Drilled

Local Co-ordinate Reference: Well Gainer Unit 1H
TVD Reference: Gainer 1H 1364 GL + 25 KB @ 1389.0usft
MD Reference: Gainer 1H 1364 GL + 25 KB @ 1389.0usft
North Reference: Grid
Survey Calculation Method: Minimum Curvature
Database: Oklahoma District

Survey

MD (usft)	Inc (°)	Azi (azimuth) (°)	TVD (usft)	N/S (usft)	E/W (usft)	V. Sec (usft)	DLeg (°/100usft)
11,867.0	88.12	141.43	7,503.6	-4,197.5	1,875.4	4,481.9	1.87
11,964.0	90.77	144.59	7,504.5	-4,275.0	1,933.8	4,578.8	4.25
12,060.0	88.73	141.43	7,504.9	-4,351.6	1,991.5	4,674.8	3.92
12,156.0	89.33	141.63	7,506.5	-4,426.8	2,051.3	4,770.8	0.66
12,253.0	90.37	142.36	7,506.8	-4,503.2	2,111.0	4,867.7	1.31
12,349.0	88.99	142.61	7,507.3	-4,579.4	2,169.4	4,963.7	1.46
12,445.0	89.66	142.10	7,508.5	-4,655.4	2,228.1	5,059.7	0.88
12,541.0	91.07	141.17	7,507.9	-4,730.6	2,287.7	5,155.7	1.76
12,638.0	90.67	143.83	7,506.4	-4,807.6	2,346.7	5,252.7	2.77
12,734.0	90.07	142.91	7,505.8	-4,884.6	2,404.0	5,348.7	1.14
12,830.0	90.03	142.00	7,505.7	-4,960.7	2,462.5	5,444.7	0.95
12,926.0	88.86	142.71	7,506.6	-5,036.7	2,521.1	5,540.6	1.43
13,022.0	88.55	144.43	7,508.8	-5,114.0	2,578.1	5,636.6	1.82
13,119.0	89.63	143.33	7,510.3	-5,192.3	2,635.3	5,733.6	1.59
13,214.0	90.07	143.99	7,510.6	-5,268.8	2,691.6	5,828.6	0.83
13,310.0	88.89	143.71	7,511.4	-5,346.3	2,748.2	5,924.6	1.26
13,407.0	89.20	144.98	7,513.1	-5,425.1	2,804.7	6,021.5	1.35
13,502.0	87.42	145.11	7,515.9	-5,503.0	2,859.1	6,116.4	1.88
13,598.0	87.89	142.31	7,519.8	-5,580.3	2,915.9	6,212.3	2.96
13,695.0	88.29	142.67	7,523.0	-5,657.2	2,974.9	6,309.3	0.55
13,791.0	89.93	144.70	7,524.5	-5,734.5	3,031.8	6,405.2	2.72
13,887.0	88.22	142.68	7,526.1	-5,811.9	3,088.6	6,501.2	2.76
13,984.0	90.13	143.20	7,527.5	-5,889.2	3,147.0	6,598.2	2.04
14,080.0	89.13	141.01	7,528.1	-5,965.0	3,206.0	6,694.2	2.51
14,177.0	89.29	141.62	7,529.4	-6,040.7	3,266.6	6,791.1	0.65
14,273.0	90.63	143.87	7,529.5	-6,117.1	3,324.7	6,887.1	2.73
14,370.0	88.96	141.71	7,529.8	-6,194.4	3,383.4	6,984.1	2.81
14,466.0	89.06	141.60	7,531.5	-6,269.6	3,442.9	7,080.1	0.15
14,562.0	88.65	140.44	7,533.4	-6,344.2	3,503.3	7,176.0	1.28
14,659.0	89.60	143.95	7,534.9	-6,420.9	3,562.7	7,272.9	3.75
14,755.0	88.96	146.32	7,536.1	-6,499.6	3,617.6	7,368.9	2.56
14,852.0	88.46	143.71	7,538.3	-6,579.1	3,673.2	7,465.8	2.74
14,948.0	89.23	144.32	7,540.2	-6,656.7	3,729.6	7,561.7	1.02
15,044.0	88.86	144.13	7,541.8	-6,734.6	3,785.7	7,657.7	0.43
15,140.0	89.93	142.70	7,542.8	-6,811.7	3,842.9	7,753.7	1.86
15,237.0	89.80	142.19	7,543.1	-6,888.6	3,902.1	7,850.7	0.54
15,333.0	89.77	141.65	7,543.4	-6,964.1	3,961.3	7,946.7	0.56
15,429.0	89.13	141.45	7,544.3	-7,039.3	4,021.0	8,042.6	0.70
15,526.0	89.73	143.43	7,545.3	-7,116.2	4,080.1	8,139.6	2.13
15,622.0	89.56	144.61	7,545.9	-7,193.9	4,136.5	8,235.6	1.24
15,719.0	89.53	146.44	7,546.7	-7,273.9	4,191.4	8,332.5	1.89
15,815.0	89.93	144.87	7,547.1	-7,353.1	4,245.5	8,428.4	1.69
15,912.0	91.31	143.40	7,546.1	-7,431.7	4,302.4	8,525.4	2.08
16,008.0	91.61	143.05	7,543.6	-7,508.6	4,359.8	8,621.3	0.48



RECEIVED

JUN 01 2015

EOW Completion Report



Company: Antero Resources
Project: Doddridge County WV
Site: Gainer/Irons Pad
Well: Gainer Unit 1H
Wellbore: Original Wellpath
Design: As Drilled

Local Co-ordinate Reference: Well Gainer Unit 1H
TVD Reference: Gainer 1H 1364 GL + 25 KB @ 1389.0usft
MD Reference: Gainer 1H 1364 GL + 25 KB @ 1389.0usft
North Reference: Grid
Survey Calculation Method: Minimum Curvature
Database: Oklahoma District

Survey

MD (usft)	Inc (°)	Azi (azimuth) (°)	TVD (usft)	N/S (usft)	E/W (usft)	V. Sec (usft)	DLeg (°/100usft)
16,105.0	90.57	141.83	7,541.8	-7,585.5	4,418.9	8,718.3	1.65
16,200.0	91.23	141.96	7,540.3	-7,660.2	4,477.6	8,813.3	0.71
16,253.0	91.23	141.96	7,539.2	-7,701.9	4,510.2	8,866.2	0.00

Design Annotations

Measured Depth (usft)	Vertical Depth (usft)	Local Coordinates		Comment
		+N/-S (usft)	+E/-W (usft)	
7,561.0	7,321.6	-754.6	-565.7	Burkett
7,598.0	7,349.3	-779.1	-564.9	Tully
7,800.0	7,470.6	-933.7	-524.3	Marcellus

Checked By: _____ Approved By: _____ Date: _____