

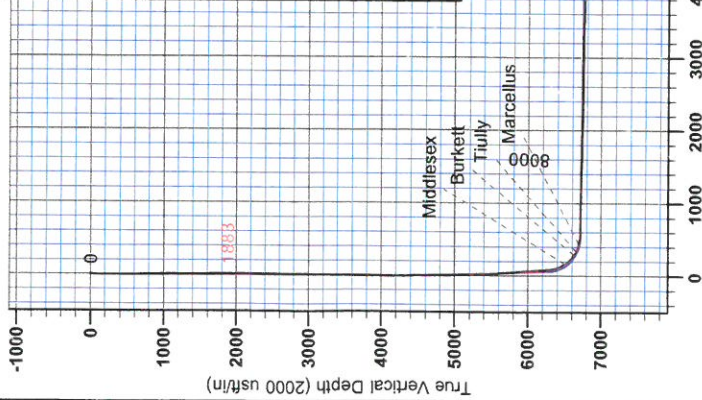
RECEIVED

JUN 08 2015

WV GEOLOGICAL SURVEY  
MORGANTOWN, WV



**Antero Resources**  
Nero Unit 2H  
Doddridge County WV  
Northing: 14261960.19  
Easting: 1683176.05  
As Drilled



**WELL DETAILS:** Nero Unit 2H

+N/S	+E/W	Northing	Easting	Latitude	Longitude
0.0	0.0	14261960.19	1683176.05	39° 16' 28.821 N	80° 50' 56.063 W

Ground Level: 1164.0  
Slot

**PROJECT DETAILS:** Doddridge County WV

Geodetic System: Universal Transverse Mercator (US Survey Feet)  
Datum: NAD83 (NADCON CONUS)  
Ellipsoid: Clarke 1866 (W to W)  
Zone: 17N (84 W to 78 W)  
System Datum: Mean Sea Level

**REFERENCE INFORMATION**

Coordinate (N/S) Reference: Well Nero Unit 2H Grid North  
Vertical (VD) Reference: Frontier 20 Nero Unit 2H GL 1164.4 ± 2' RAB @ 1188.0ft  
Horizontal (H/E) Reference: Frontier 20 Nero Unit 2H GL 1164.4 ± 2' RAB @ 1188.0ft  
Measured Depth Reference: Frontier 20 Nero Unit 2H GL 1164.4 ± 2' RAB @ 1188.0ft  
Calculation Method: Minimum Curvature

Genie Lightfoot  
9.09, May 30 2014  
Scientific Drilling  
421 South Eagle Lane  
Oklahoma City, OK 73128



**LEGEND**

- Nero Unit 1H, Original Wellpath, As Drilled V0
- Nero Unit 1H, Sidetrack Wellpath, As Drilled ST1 V0
- Mash Unit 2H, Original Wellpath, As Drilled V0
- Mash Unit 1H, Original Wellpath, As Drilled V0
- Nero Unit 2H, Original Wellpath, As Drilled V0
- Nero Unit 2H, Original Wellpath, Plan 4 Nudge V0
- Nero Unit 2H, Sidetrack, ST Plan 4 Post Gyro V0
- As Drilled

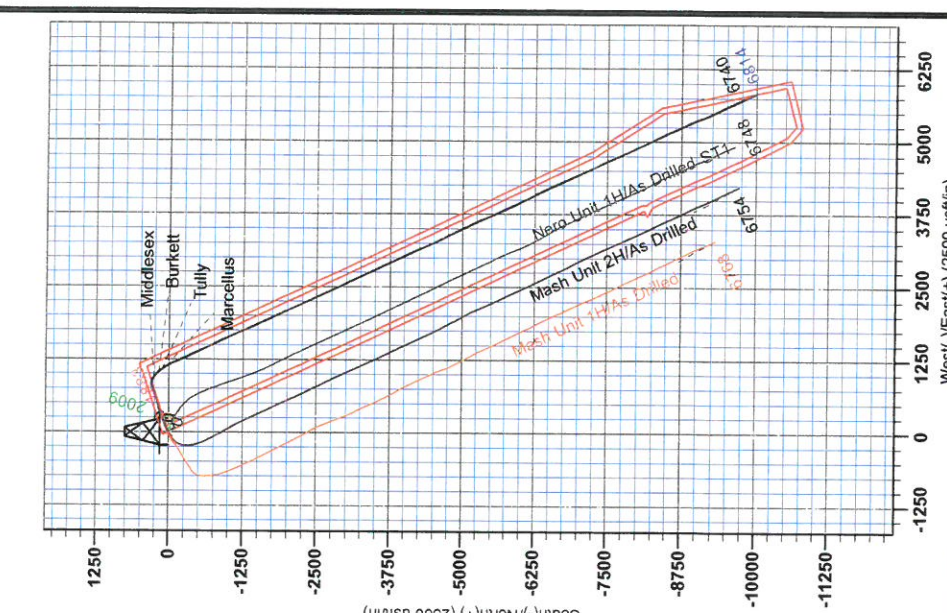
**DESIGN TARGET DETAILS**

Name	TVD	+N/S	+E/W	Northing	Easting	Latitude	Longitude
SHL Nero Unit 2H OH	0.0	0.0	0.0	0.01426196019	1683176.0539	16° 28' 62.1 N	80° 50' 56.063 W
BHL Nero Unit 2H OH	1883.3	2.0	-1.5	14261962.17	1683174.589	16° 28' 64.1 N	80° 50' 56.061 W
Actual BHL Nero Unit 2H	1873.6	-9949.9	5808.4	414252010.33	1688984.483	14° 50' 13.7 N	80° 49' 42.415 W

To convert Magnetic North to Grid, Subtract 8.57"  
To convert True North to Grid, Subtract 0.10"

Magnetic Field Strength: 48.5  
Dip Angle: 68.85°  
Date: 5/10/2014  
Model: BGGM2013

Azimuths to Grid North  
True North: -0.10"  
Magnetic North: -8.57"





RECEIVED  
JUN 08 2015  
WV GEOLOGICAL SURVEY  
MORGANTOWN, WV

# Antero Resources

Doddridge County WV  
Nero Pad  
Nero Unit 2H  
Sidetrack

Design: As Drilled

## EOW Completion Report

30 May, 2014





EOW Completion Report



<b>Company:</b>	Antero Resources	<b>Local Co-ordinate Reference:</b>	Well Nero Unit 2H
<b>Project:</b>	Doddridge County WV	<b>TVD Reference:</b>	Frontier 23 Nero Unit 2H GL 1164 + 22' RKB @ 1
<b>Site:</b>	Nero Pad	<b>MD Reference:</b>	Frontier 23 Nero Unit 2H GL 1164 + 22' RKB @ 1
<b>Well:</b>	Nero Unit 2H	<b>North Reference:</b>	Grid
<b>Wellbore:</b>	Sidetrack	<b>Survey Calculation Method:</b>	Minimum Curvature
<b>Design:</b>	As Drilled	<b>Database:</b>	Oklahoma District

<b>Project</b>	Doddridge County WV, McClellan District		
<b>Map System:</b>	Universal Transverse Mercator (US Survey Feet)	<b>System Datum:</b>	Mean Sea Level
<b>Geo Datum:</b>	NAD 1927 (NADCON CONUS)		
<b>Map Zone:</b>	Zone 17N (84 W to 78 W)		

<b>Site</b>	Nero Pad				
<b>Site Position:</b>		<b>Northing:</b>	14,261,930.17 usft	<b>Latitude:</b>	39° 16' 28.324 N
<b>From:</b>	Map	<b>Easting:</b>	1,683,174.55 usft	<b>Longitude:</b>	80° 50' 56.082 W
<b>Position Uncertainty:</b>	0.0 usft	<b>Slot Radius:</b>	13-3/16"	<b>Grid Convergence:</b>	0.10 °

<b>Well</b>	Nero Unit 2H					
<b>Well Position</b>	<b>+N/-S</b>	0.0 usft	<b>Northing:</b>	14,261,960.19 usft	<b>Latitude:</b>	39° 16' 28.621 N
	<b>+E/-W</b>	0.0 usft	<b>Easting:</b>	1,683,176.05 usft	<b>Longitude:</b>	80° 50' 56.063 W
<b>Position Uncertainty</b>		2.8 usft	<b>Wellhead Elevation:</b>	1,186.0 usft	<b>Ground Level:</b>	1,164.0 usft

<b>Wellbore</b>	Sidetrack				
<b>Magnetics</b>	<b>Model Name</b>	<b>Sample Date</b>	<b>Declination (°)</b>	<b>Dip Angle (°)</b>	<b>Field Strength (nT)</b>
	BGGM2013	5/10/2014	-8.47	66.85	52,264

<b>Design</b>	As Drilled				
<b>Audit Notes:</b>					
<b>Version:</b>	1.0	<b>Phase:</b>	ACTUAL	<b>Tie On Depth:</b>	0.0
<b>Vertical Section:</b>		<b>Depth From (TVD) (usft)</b>	<b>+N/-S (usft)</b>	<b>+E/-W (usft)</b>	<b>Direction (°)</b>
		0.0	0.0	0.0	155.01

<b>Survey Program</b>	<b>Date</b>	5/30/2014			
<b>From (usft)</b>	<b>To (usft)</b>	<b>Survey (Wellbore)</b>	<b>Tool Name</b>	<b>Description</b>	
100.0	2,582.5	Survey #1 Def Gyro to 2582.5' (Sidetrack)	SDI Standard Keeper	Scientific Drilling Intl. Standard Wireline Keeper	
2,600.0	4,058.1	Survey #2 Def Gyro to KOP (Sidetrack)	SDI Standard Keeper	Scientific Drilling Intl. Standard Wireline Keeper	
4,100.0	6,227.2	Survey #4 Def Gyro to 6227 (Sidetrack)	SDI Standard Keeper	Scientific Drilling Intl. Standard Wireline Keeper	
6,278.0	18,111.0	Survey #5 MWD (Sidetrack)	MWD SDI	MWD - Standard ver 1.0.1	

<b>Survey</b>								
<b>MD (usft)</b>	<b>Inc (°)</b>	<b>Azi (azimuth) (°)</b>	<b>TVD (usft)</b>	<b>N/S (usft)</b>	<b>E/W (usft)</b>	<b>V. Sec (usft)</b>	<b>DLeg (°/100usft)</b>	
0.0	0.00	0.00	0.00	0.0	0.0	0.0	0.00	
100.0	0.28	1.24	100.0	0.2	0.0	-0.2	0.28	
200.0	0.25	347.97	200.0	0.7	0.0	-0.7	0.07	
300.0	0.12	325.49	300.0	1.0	-0.1	-1.0	0.15	
400.0	0.15	320.00	400.0	1.2	-0.3	-1.2	0.03	
500.0	0.19	331.70	500.0	1.4	-0.4	-1.5	0.05	
600.0	0.19	331.55	600.0	1.7	-0.6	-1.8	0.00	
700.0	1.44	94.10	700.0	1.8	0.6	-1.4	1.55	
800.0	3.40	95.48	799.9	1.4	4.8	0.7	1.96	

JUN 08 2015



EOW Completion Report



**Company:** Antero Resources  
**Project:** Doddridge County WV  
**Site:** Nero Pad  
**Well:** Nero Unit 2H  
**Wellbore:** Sidetrack  
**Design:** As Drilled

**Local Co-ordinate Reference:** Well Nero Unit 2H  
**TVD Reference:** Frontier 23 Nero Unit 2H GL 1164 + 22' RKB @ 1  
**MD Reference:** Frontier 23 Nero Unit 2H GL 1164 + 22' RKB @ 1  
**North Reference:** Grid  
**Survey Calculation Method:** Minimum Curvature  
**Database:** Oklahoma District

**Survey**

MD (usft)	Inc (°)	Azi (azimuth) (°)	TVD (usft)	N/S (usft)	E/W (usft)	V. Sec (usft)	DLeg (°/100usft)
900.0	4.65	83.39	899.6	1.6	11.8	3.5	1.50
1,000.0	4.81	83.37	999.3	2.5	19.9	6.1	0.16
1,100.0	4.07	66.11	1,099.0	4.5	27.4	7.5	1.52
1,200.0	3.27	62.78	1,198.8	7.2	33.1	7.5	0.83
1,300.0	2.65	63.31	1,298.7	9.5	37.7	7.3	0.62
1,400.0	2.00	69.35	1,398.6	11.2	41.4	7.4	0.69
1,500.0	1.33	66.54	1,498.5	12.3	44.1	7.5	0.67
1,600.0	0.88	71.60	1,598.5	13.0	45.9	7.6	0.46
1,700.0	0.59	75.17	1,698.5	13.4	47.2	7.8	0.29
1,800.0	0.46	63.84	1,798.5	13.7	48.0	7.9	0.17
1,900.0	0.32	85.12	1,898.5	13.9	48.7	8.0	0.20
2,000.0	0.30	66.77	1,998.5	14.0	49.2	8.1	0.10
2,100.0	0.29	79.51	2,098.5	14.1	49.7	8.2	0.07
2,200.0	0.17	68.05	2,198.5	14.2	50.0	8.2	0.13
2,300.0	0.08	121.62	2,298.5	14.3	50.2	8.3	0.14
2,400.0	0.12	27.63	2,398.5	14.3	50.4	8.3	0.15
2,500.0	0.10	102.30	2,498.5	14.4	50.5	8.3	0.13
2,582.5	0.30	9.50	2,581.0	14.6	50.6	8.1	0.39
2,600.0	0.29	273.11	2,598.5	14.6	50.6	8.1	2.51
2,700.0	0.35	308.87	2,698.5	14.8	50.1	7.7	0.20
2,800.0	0.55	314.99	2,798.5	15.4	49.5	7.0	0.21
2,900.0	0.64	312.14	2,898.5	16.1	48.7	6.0	0.09
3,000.0	0.86	306.13	2,998.5	16.9	47.7	4.8	0.23
3,100.0	0.94	301.09	3,098.5	17.8	46.4	3.5	0.11
3,200.0	0.79	307.67	3,198.5	18.6	45.2	2.2	0.18
3,300.0	0.79	309.26	3,298.5	19.5	44.1	1.0	0.02
3,400.0	0.78	321.67	3,398.4	20.4	43.1	-0.3	0.17
3,500.0	0.80	326.85	3,498.4	21.6	42.3	-1.7	0.07
3,600.0	0.71	312.80	3,598.4	22.6	41.5	-2.9	0.21
3,700.0	0.72	317.19	3,698.4	23.5	40.6	-4.1	0.06
3,800.0	0.83	315.88	3,798.4	24.4	39.7	-5.4	0.11
3,900.0	0.65	311.70	3,898.4	25.3	38.7	-6.6	0.19
4,000.0	0.53	332.57	3,998.4	26.1	38.1	-7.6	0.24
4,058.1	0.66	310.86	4,056.5	26.6	37.7	-8.2	0.44
4,100.0	0.60	10.85	4,098.4	26.9	37.6	-8.5	1.51
4,200.0	4.25	84.13	4,198.3	27.8	41.4	-7.8	4.12
4,300.0	6.56	80.16	4,297.8	29.2	50.7	-5.1	2.34
4,400.0	7.58	66.99	4,397.1	32.8	62.4	-3.3	1.91
4,500.0	10.06	64.41	4,495.9	39.1	76.3	-3.2	2.51
4,600.0	13.12	67.59	4,593.8	47.2	94.7	-2.8	3.12
4,700.0	15.75	70.94	4,690.7	56.0	118.0	-0.9	2.76
4,800.0	17.05	71.64	4,786.6	65.0	144.8	2.2	1.31
4,900.0	19.82	69.04	4,881.5	75.7	174.5	5.1	2.89
5,000.0	22.09	65.79	4,974.9	89.5	207.5	6.6	2.55



EOW Completion Report



**Company:** Antero Resources  
**Project:** Doddridge County WV  
**Site:** Nero Pad  
**Well:** Nero Unit 2H  
**Wellbore:** Sidetrack  
**Design:** As Drilled

**Local Co-ordinate Reference:** Well Nero Unit 2H  
**TVD Reference:** Frontier 23 Nero Unit 2H GL 1164 + 22' RKB @ 1  
**MD Reference:** Frontier 23 Nero Unit 2H GL 1164 + 22' RKB @ 1  
**North Reference:** Grid  
**Survey Calculation Method:** Minimum Curvature  
**Database:** Oklahoma District

**Survey**

MD (usft)	Inc (°)	Azi (azimuth) (°)	TVD (usft)	N/S (usft)	E/W (usft)	V. Sec (usft)	DLeg (°/100usft)
5,100.0	21.40	65.11	5,067.7	104.9	241.2	6.9	0.73
5,200.0	24.07	68.68	5,160.0	120.0	276.8	8.2	3.00
5,300.0	23.17	70.36	5,251.6	134.0	314.3	11.3	1.12
5,400.0	25.82	69.76	5,342.6	148.1	353.3	15.0	2.66
5,500.0	26.53	71.78	5,432.3	162.7	394.9	19.4	1.14
5,600.0	26.45	76.74	5,521.8	174.8	437.8	26.6	2.21
5,700.0	27.25	74.84	5,611.1	185.8	481.6	35.0	1.17
5,800.0	24.22	72.60	5,701.1	198.0	523.3	41.6	3.18
5,900.0	24.41	75.93	5,792.3	209.1	562.9	48.2	1.38
6,000.0	26.63	75.18	5,882.5	219.9	604.6	56.1	2.24
6,100.0	26.69	72.73	5,971.9	232.3	647.7	63.1	1.10
6,200.0	27.57	71.02	6,060.9	246.5	691.0	68.5	1.18
6,227.2	27.06	70.62	6,085.0	250.6	702.8	69.8	1.99
6,278.0	29.28	69.33	6,129.8	258.8	725.4	71.9	4.53
6,341.0	29.28	72.00	6,184.8	269.0	754.4	74.9	2.07
6,364.0	29.50	74.52	6,204.8	272.2	765.2	76.5	5.46
6,396.0	29.28	75.78	6,232.7	276.3	780.4	79.3	2.05
6,428.0	28.93	75.51	6,260.7	280.1	795.5	82.2	1.17
6,460.0	28.38	74.56	6,288.7	284.1	810.3	84.8	2.23
6,492.0	27.72	78.67	6,317.0	287.6	824.9	87.8	6.38
6,524.0	27.87	87.47	6,345.3	289.4	839.7	92.5	12.82
6,556.0	28.56	96.00	6,373.5	288.9	854.8	99.3	12.78
6,588.0	29.93	102.15	6,401.4	286.4	870.2	108.0	10.31
6,620.0	31.63	109.31	6,428.9	282.0	886.0	118.7	12.61
6,652.0	34.21	113.83	6,455.8	275.6	902.1	131.3	11.13
6,685.0	37.24	117.48	6,482.6	267.2	919.5	146.2	11.22
6,717.0	39.66	122.17	6,507.7	257.3	936.7	162.5	11.84
6,718.0	39.72	122.32	6,508.4	256.9	937.2	163.0	11.64
<b>Middlesex</b>							
6,749.0	41.75	126.90	6,531.9	245.5	953.9	180.5	11.64
6,781.0	44.05	131.15	6,555.4	231.7	970.8	200.1	11.55
6,813.0	46.76	134.72	6,577.8	216.2	987.4	221.2	11.61
6,845.0	50.74	137.39	6,598.9	198.9	1,004.1	243.9	13.93
6,877.0	54.78	139.23	6,618.3	179.8	1,021.0	268.3	13.43
6,899.0	57.76	139.77	6,630.5	165.9	1,032.9	286.0	13.72
<b>Burkett</b>							
6,909.0	59.12	140.01	6,635.7	159.4	1,038.4	294.2	13.72
6,942.0	63.33	141.75	6,651.6	137.0	1,056.6	322.2	13.57
6,962.0	64.91	142.49	6,660.4	122.8	1,067.7	339.8	8.58
<b>Tiully</b>							
6,974.0	65.86	142.93	6,665.4	114.1	1,074.3	350.4	8.58
7,006.0	69.54	143.71	6,677.5	90.4	1,092.0	379.4	11.72
7,038.0	72.72	144.95	6,687.8	65.8	1,109.6	409.2	10.59
7,063.0	75.67	146.19	6,694.6	45.9	1,123.2	432.9	12.74
<b>Marcellus</b>							



EOW Completion Report



**Company:** Antero Resources  
**Project:** Doddridge County WV  
**Site:** Nero Pad  
**Well:** Nero Unit 2H  
**Wellbore:** Sidetrack  
**Design:** As Drilled

**Local Co-ordinate Reference:** Well Nero Unit 2H  
**TVD Reference:** Frontier 23 Nero Unit 2H GL 1164 + 22' RKB @ 1  
**MD Reference:** Frontier 23 Nero Unit 2H GL 1164 + 22' RKB @ 1  
**North Reference:** Grid  
**Survey Calculation Method:** Minimum Curvature  
**Database:** Oklahoma District

**Survey**

MD (usft)	Inc (°)	Azi (azimuth) (°)	TVD (usft)	N/S (usft)	E/W (usft)	V. Sec (usft)	DLeg (°/100usft)
7,070.0	76.50	146.53	6,696.3	40.3	1,127.0	439.6	12.74
7,102.0	78.39	147.49	6,703.3	14.1	1,144.0	470.5	6.59
7,134.0	80.20	149.61	6,709.2	-12.8	1,160.4	501.8	8.62
7,165.0	82.22	153.69	6,714.0	-39.7	1,174.9	532.4	14.55
7,228.0	87.78	157.99	6,719.5	-96.9	1,200.6	595.1	11.14
7,287.0	88.81	157.69	6,721.2	-151.6	1,222.9	654.0	1.82
7,382.0	90.04	157.08	6,722.2	-239.3	1,259.4	748.9	1.45
7,478.0	90.75	154.18	6,721.5	-326.7	1,299.0	844.9	3.11
7,574.0	89.16	152.24	6,721.6	-412.4	1,342.3	940.8	2.61
7,669.0	89.78	152.68	6,722.5	-496.6	1,386.2	1,035.7	0.80
7,765.0	89.60	152.95	6,723.0	-582.0	1,430.0	1,131.6	0.34
7,861.0	89.25	154.26	6,723.9	-668.0	1,472.7	1,227.6	1.41
7,956.0	87.32	153.03	6,726.8	-753.1	1,514.9	1,322.5	2.41
8,053.0	87.67	154.70	6,731.0	-840.1	1,557.5	1,419.4	1.76
8,148.0	90.04	156.64	6,732.9	-926.6	1,596.7	1,514.4	3.22
8,242.0	89.08	156.37	6,733.6	-1,012.8	1,634.1	1,608.3	1.06
8,338.0	88.90	155.76	6,735.3	-1,100.5	1,673.1	1,704.3	0.66
8,433.0	89.16	155.76	6,736.9	-1,187.1	1,712.1	1,799.3	0.27
8,529.0	89.52	156.72	6,738.1	-1,275.0	1,750.8	1,895.3	1.07
8,625.0	87.23	156.02	6,740.8	-1,362.9	1,789.2	1,991.2	2.49
8,721.0	87.14	155.85	6,745.5	-1,450.5	1,828.3	2,087.1	0.20
8,818.0	88.37	155.76	6,749.3	-1,538.9	1,868.0	2,184.0	1.27
8,913.0	90.04	154.97	6,750.6	-1,625.2	1,907.6	2,279.0	1.94
9,010.0	90.57	154.44	6,750.1	-1,712.9	1,949.1	2,376.0	0.77
9,106.0	89.16	154.13	6,750.3	-1,799.4	1,990.7	2,471.9	1.50
9,202.0	88.55	153.03	6,752.2	-1,885.4	2,033.4	2,567.9	1.31
9,298.0	90.22	154.53	6,753.3	-1,971.5	2,075.8	2,663.9	2.34
9,394.0	90.84	154.70	6,752.4	-2,058.2	2,117.0	2,759.9	0.67
9,490.0	89.34	154.97	6,752.2	-2,145.1	2,157.8	2,855.9	1.59
9,586.0	89.60	155.14	6,753.1	-2,232.1	2,198.3	2,951.8	0.32
9,683.0	89.16	155.23	6,754.2	-2,320.2	2,239.0	3,048.8	0.46
9,779.0	89.87	155.49	6,755.0	-2,407.4	2,279.0	3,144.8	0.79
9,875.0	88.37	155.58	6,756.5	-2,494.8	2,318.8	3,240.8	1.57
9,970.0	88.02	154.88	6,759.4	-2,581.0	2,358.6	3,335.8	0.82
10,065.0	88.20	154.61	6,762.6	-2,666.9	2,399.1	3,430.7	0.34
10,162.0	88.64	154.00	6,765.3	-2,754.2	2,441.1	3,527.7	0.78
10,257.0	88.99	153.56	6,767.2	-2,839.4	2,483.1	3,622.6	0.59
10,353.0	89.34	153.21	6,768.6	-2,925.3	2,526.1	3,718.6	0.52
10,449.0	90.13	153.30	6,769.1	-3,011.0	2,569.3	3,814.5	0.83
10,545.0	88.29	155.58	6,770.4	-3,097.6	2,610.7	3,910.5	3.05
10,642.0	89.25	156.11	6,772.5	-3,186.1	2,650.4	4,007.5	1.13
10,738.0	90.04	155.58	6,773.1	-3,273.7	2,689.7	4,103.5	0.99
10,834.0	88.99	154.53	6,773.9	-3,360.7	2,730.2	4,199.5	1.55
10,929.0	89.16	154.18	6,775.4	-3,446.3	2,771.3	4,294.4	0.41

JUN 08 2015



## EOW Completion Report



**Company:** Antero Resources  
**Project:** Doddridge County WV  
**Site:** Nero Pad  
**Well:** Nero Unit 2H  
**Wellbore:** Sidetrack  
**Design:** As Drilled

**Local Co-ordinate Reference:** Well Nero Unit 2H  
**TVD Reference:** Frontier 23 Nero Unit 2H GL 1164 + 22' RKB @ 1  
**MD Reference:** Frontier 23 Nero Unit 2H GL 1164 + 22' RKB @ 1  
**North Reference:** Grid  
**Survey Calculation Method:** Minimum Curvature  
**Database:** Oklahoma District

### Survey

MD (usft)	Inc (°)	Azi (azimuth) (°)	TVD (usft)	N/S (usft)	E/W (usft)	V. Sec (usft)	DLeg (°/100usft)
11,025.0	89.87	154.61	6,776.2	-3,532.9	2,812.7	4,390.4	0.86
11,120.0	88.46	154.70	6,777.6	-3,618.7	2,853.4	4,485.4	1.49
11,216.0	88.37	154.79	6,780.3	-3,705.5	2,894.4	4,581.4	0.13
11,312.0	88.02	154.97	6,783.3	-3,792.4	2,935.1	4,677.3	0.41
11,408.0	89.16	155.85	6,785.6	-3,879.7	2,975.0	4,773.3	1.50
11,505.0	89.25	155.67	6,787.0	-3,968.1	3,014.8	4,870.3	0.21
11,601.0	89.69	155.49	6,787.9	-4,055.5	3,054.5	4,966.3	0.50
11,697.0	88.55	155.49	6,789.4	-4,142.9	3,094.3	5,062.2	1.19
11,792.0	87.93	155.32	6,792.3	-4,229.2	3,133.9	5,157.2	0.68
11,888.0	87.63	155.67	6,796.0	-4,316.5	3,173.7	5,253.1	0.48
11,983.0	88.46	156.02	6,799.2	-4,403.1	3,212.5	5,348.1	0.95
12,080.0	88.20	156.46	6,802.1	-4,491.9	3,251.6	5,445.0	0.53
12,175.0	89.43	156.60	6,804.0	-4,579.0	3,289.4	5,539.9	1.30
12,272.0	90.04	154.00	6,804.5	-4,667.1	3,329.9	5,636.9	2.75
12,368.0	90.84	153.12	6,803.7	-4,753.0	3,372.7	5,732.9	1.24
12,465.0	91.63	152.33	6,801.6	-4,839.2	3,417.1	5,829.8	1.15
12,560.0	89.52	154.18	6,800.7	-4,924.1	3,459.9	5,924.7	2.95
12,657.0	89.69	154.53	6,801.4	-5,011.5	3,501.8	6,021.7	0.40
12,751.0	90.31	153.91	6,801.4	-5,096.2	3,542.7	6,115.7	0.93
12,848.0	89.96	156.28	6,801.1	-5,184.1	3,583.6	6,212.7	2.47
12,944.0	90.31	156.64	6,800.9	-5,272.1	3,621.9	6,308.7	0.52
13,035.0	89.16	157.08	6,801.3	-5,355.8	3,657.7	6,399.6	1.35
13,126.0	89.43	157.16	6,802.4	-5,439.6	3,693.0	6,490.6	0.31
13,216.0	89.43	156.99	6,803.3	-5,522.5	3,728.1	6,580.5	0.19
13,307.0	89.87	157.16	6,803.9	-5,606.3	3,763.5	6,671.4	0.52
13,398.0	89.78	157.95	6,804.2	-5,690.4	3,798.3	6,762.3	0.87
13,489.0	90.13	156.11	6,804.2	-5,774.2	3,833.8	6,853.3	2.06
13,580.0	88.72	153.03	6,805.2	-5,856.4	3,872.9	6,944.3	3.72
13,670.0	88.64	152.77	6,807.2	-5,936.5	3,913.9	7,034.2	0.30
13,761.0	88.46	152.77	6,809.5	-6,017.4	3,955.5	7,125.1	0.20
13,853.0	88.99	152.51	6,811.6	-6,099.1	3,997.7	7,217.0	0.64
13,944.0	88.99	151.54	6,813.2	-6,179.4	4,040.4	7,307.8	1.07
14,035.0	87.85	153.30	6,815.7	-6,260.0	4,082.5	7,398.7	2.30
14,132.0	88.55	154.61	6,818.7	-6,347.2	4,125.1	7,495.6	1.53
14,226.0	88.72	153.30	6,821.0	-6,431.6	4,166.4	7,589.6	1.40
14,321.0	91.45	156.11	6,820.8	-6,517.5	4,207.0	7,684.6	4.12
14,417.0	92.59	156.11	6,817.5	-6,605.2	4,245.8	7,780.5	1.19
14,512.0	91.71	155.32	6,813.9	-6,691.7	4,284.9	7,875.4	1.24
14,607.0	91.45	155.14	6,811.3	-6,777.9	4,324.6	7,970.4	0.33
14,703.0	91.36	154.97	6,808.9	-6,865.0	4,365.1	8,066.4	0.20
14,798.0	90.22	156.11	6,807.6	-6,951.4	4,404.4	8,161.3	1.70
14,895.0	90.75	156.20	6,806.8	-7,040.1	4,443.7	8,258.3	0.55
14,991.0	90.13	156.99	6,806.1	-7,128.2	4,481.8	8,354.3	1.05
15,088.0	89.16	153.38	6,806.7	-7,216.3	4,522.5	8,451.3	3.85

RECEIVED

JUN 08 2015



WV GEOLOGICAL SURVEY  
MORGANTOWN, WV

EOW Completion Report



**Company:** Antero Resources  
**Project:** Doddridge County WV  
**Site:** Nero Pad  
**Well:** Nero Unit 2H  
**Wellbore:** Sidetrack  
**Design:** As Drilled

**Local Co-ordinate Reference:** Well Nero Unit 2H  
**TVD Reference:** Frontier 23 Nero Unit 2H GL 1164 + 22' RKB @ 1  
**MD Reference:** Frontier 23 Nero Unit 2H GL 1164 + 22' RKB @ 1  
**North Reference:** Grid  
**Survey Calculation Method:** Minimum Curvature  
**Database:** Oklahoma District

Survey

MD (usft)	Inc (°)	Azi (azimuth) (°)	TVD (usft)	N/S (usft)	E/W (usft)	V. Sec (usft)	DLeg (°/100usft)
15,183.0	89.08	152.77	6,808.1	-7,300.9	4,565.5	8,546.2	0.65
15,278.0	88.37	154.18	6,810.2	-7,385.9	4,607.9	8,641.1	1.66
15,374.0	88.69	155.49	6,812.7	-7,472.8	4,648.7	8,737.1	1.40
15,470.0	88.20	155.41	6,815.3	-7,560.1	4,688.6	8,833.1	0.52
15,566.0	89.25	156.20	6,817.4	-7,647.6	4,727.9	8,929.0	1.37
15,663.0	89.08	156.64	6,818.8	-7,736.5	4,766.7	9,026.0	0.49
15,758.0	90.22	154.88	6,819.4	-7,823.1	4,805.7	9,121.0	2.21
15,854.0	91.10	155.76	6,818.3	-7,910.3	4,845.8	9,217.0	1.30
15,951.0	92.07	154.88	6,815.6	-7,998.4	4,886.3	9,313.9	1.35
16,047.0	92.59	154.70	6,811.7	-8,085.2	4,927.2	9,409.8	0.57
16,143.0	90.48	154.88	6,809.2	-8,172.1	4,968.0	9,505.8	2.21
16,237.0	90.22	153.56	6,808.6	-8,256.7	5,008.9	9,599.8	1.43
16,333.0	90.84	153.47	6,807.7	-8,342.6	5,051.7	9,695.7	0.65
16,429.0	92.51	153.74	6,804.9	-8,428.6	5,094.4	9,791.7	1.76
16,525.0	92.59	155.49	6,800.6	-8,515.2	5,135.5	9,887.6	1.82
16,621.0	93.12	155.14	6,795.8	-8,602.3	5,175.5	9,983.4	0.66
16,717.0	92.51	155.32	6,791.1	-8,689.4	5,215.7	10,079.3	0.66
16,813.0	92.77	154.53	6,786.7	-8,776.2	5,256.3	10,175.2	0.87
16,910.0	91.63	154.70	6,783.0	-8,863.8	5,297.9	10,272.1	1.19
17,006.0	91.80	154.18	6,780.1	-8,950.4	5,339.3	10,368.1	0.57
17,102.0	91.80	154.53	6,777.1	-9,036.9	5,380.8	10,464.0	0.36
17,198.0	91.80	155.76	6,774.1	-9,123.9	5,421.2	10,560.0	1.28
17,294.0	91.98	155.41	6,770.9	-9,211.3	5,460.8	10,655.9	0.41
17,391.0	92.42	154.44	6,767.2	-9,299.1	5,501.9	10,752.9	1.10
17,487.0	92.33	154.00	6,763.2	-9,385.5	5,543.6	10,848.8	0.47
17,583.0	92.51	154.26	6,759.2	-9,471.8	5,585.5	10,944.7	0.33
17,679.0	92.77	154.00	6,754.7	-9,558.1	5,627.3	11,040.6	0.38
17,775.0	92.15	153.56	6,750.6	-9,644.1	5,669.7	11,136.5	0.79
17,871.0	92.15	155.14	6,747.0	-9,730.6	5,711.2	11,232.4	1.64
17,967.0	92.24	157.87	6,743.3	-9,818.6	5,749.4	11,328.3	2.84
18,063.0	91.28	155.05	6,740.9	-9,890.9	5,781.0	11,407.2	3.77
18,111.0	91.10	155.05	6,739.6	-9,949.9	5,808.4	11,472.2	0.28

Design Annotations

Measured Depth (usft)	Vertical Depth (usft)	Local Coordinates		Comment
		+N/-S (usft)	+E/-W (usft)	
6,718.0	6,508.4	256.9	937.2	Middlesex
6,899.0	6,630.5	165.9	1,032.9	Burkett
6,962.0	6,660.4	122.8	1,067.7	Tully
7,063.0	6,694.6	45.9	1,123.2	Marcellus

Checked By: \_\_\_\_\_ Approved By: \_\_\_\_\_ Date: \_\_\_\_\_