

RECEIVED

AUG 03 2015

WR-35

Rev. 8/23/13

WV GEOLOGICAL SURVEY
MORGANTOWN, WV

Page ___ of ___

State of West Virginia
Department of Environmental Protection - Office of Oil and Gas
Well Operator's Report of Well Work

API 47-017-06218 County Doddridge District Grant
Quad Smithburg 7.5' Pad Name Revival Pad Field/Pool Name _____
Farm name Williams, Larry et al Well Number Gains-Koch Unit 1H
Operator (as registered with the OOG) Antero Resources Corporation
Address 1615 Wynkoop Street City Denver State CO Zip 80202

As Drilled location NAD 83/UTM Attach an as-drilled plat, profile view, and deviation survey
Top hole Northing 4,352,815m Easting 526,708m
Landing Point of Curve Northing 4,352,489.75m Easting 526,347.57m
Bottom Hole Northing 4,350,593m Easting 526,981m

Elevation (ft) 1,376' GL Type of Well New Existing Type of Report Interim Final
Permit Type Deviated Horizontal Horizontal 6A Vertical Depth Type Deep Shallow
Type of Operation Convert Deepen Drill Plug Back Redrilling Rework Stimulate
Well Type Brine Disposal CBM Gas Oil Secondary Recovery Solution Mining Storage Other _____
Type of Completion Single Multiple Fluids Produced Brine Gas NGL Oil Other _____
Drilled with Cable Rotary

Drilling Media Surface hole Air Mud Fresh Water Intermediate hole Air Mud Fresh Water Brine
Production hole Air Mud Fresh Water Brine

Mud Type(s) and Additive(s)
Air- Foam & 4% KCL
Mud- Polymer

Date permit issued 06/12/2013 Date drilling commenced 09/26/2013 Date drilling ceased 11/04/2014
Date completion activities began 11/11/2014 Date completion activities ceased 01/28/2015
Verbal plugging (Y/N) N/A Date permission granted N/A Granted by N/A

Please note: Operator is required to submit a plugging application within 5 days of verbal permission to plug

Freshwater depth(s) ft 427' Open mine(s) (Y/N) depths No
Salt water depth(s) ft 1,687' Void(s) encountered (Y/N) depths None
Coal depth(s) ft None Identified Cavern(s) encountered (Y/N) depths None
Is coal being mined in area (Y/N) No

Reviewed by: _____

RECEIVED

AUG 03 2015

WR-35
Rev. 8/23/13

WV GEOLOGICAL SURVEY
MORGANTOWN, WV

Page ___ of ___

API 47-017 - 06218 Farm name Williams, Larry et al Well number Gains-Koch Unit 1H

CASING STRINGS	Hole Size	Casing Size	Depth	New or Used	Grade wt/ft	Basket Depth(s)	Did cement circulate (Y/N) * Provide details below*
Conductor	30"	20"	40'	New	51#; H-40	N/A	Yes
Surface	17 1/2"	13 3/8"	487'	New	48#; H-40	N/A	Yes
Coal							
Intermediate 1	12 1/4"	9 5/8"	2,619'	New	36#; J-55	N/A	Yes
Intermediate 2							
Intermediate 3							
Production	8 3/4" & 8 1/2"	5 1/2"	14,425'	New	20#; P-110	N/A	Yes
Tubing		2 3/8"	7,596'		5.95#; N-80	N/A	
Packer type and depth set	N/A						

Comment Details _____

CEMENT DATA	Class/Type of Cement	Number of Sacks	Slurry wt (ppg)	Yield (ft ³ /sks)	Volume (ft ³)	Cement Top (MD)	WOC (hrs)
Conductor	Class A	105 sx	15.6	1.18	82	0'	8 Hrs.
Surface	Class A	586 sx	15.6	1.18	338	0'	8 Hrs.
Coal							
Intermediate 1	Class A	1,016 sx	15.6	1.18	820	0'	8 Hrs.
Intermediate 2							
Intermediate 3							
Production	Class H	1,171 sx (Lead); 1,082 sx (Tail)	14.5 (Lead); 15.2 (Tail)	1.3 (Lead); 1.86 (Tail)	2,819	-500' into Intermediate Casing	8 Hrs.
Tubing							

Drillers TD (ft) 14,425' MD, 7,202' TVD (BHL); 7,235' TVD (Deepest Point Drilled) Loggers TD (ft) 14,374'

Deepest formation penetrated Marcellus Plug back to (ft) N/A

Plug back procedure N/A

Kick off depth (ft) 7,072'

**This is a subsequent well. Antero only runs wireline logs on one well on a multi-well pad (Mt. Salem Revival Unit 1H, API #47-017-06269). Please reference the wireline logs submitted with Form WR-35 for the Mt. Salem Revival Unit 1H. A Cement Bond Log has been included with this submittal.

Check all wireline logs run ** caliper density deviated/directional induction neutron resistivity gamma ray temperature sonic

Well cored Yes No Conventional Sidewall Were cuttings collected Yes No

DESCRIBE THE CENTRALIZER PLACEMENT USED FOR EACH CASING STRING _____

Conductor- 0

Surface- 1 above guide shoe, 1 above insert float, 1 every 4th joint to surface

Intermediate- 1 above float joint, 1 above float collar, 1 every 4th joint to surface

Production- 1 above float joint, 1 below float collar, 1 every 3rd joint to top of cement

WAS WELL COMPLETED AS SHOT HOLE Yes No DETAILS _____

WAS WELL COMPLETED OPEN HOLE? Yes No DETAILS _____

WERE TRACERS USED Yes No TYPE OF TRACER(S) USED _____

RECEIVED

AUG 03 2015

WR-35
Rev. 8/23/13

WV GEOLOGICAL SURVEY
MORGANTOWN, WV

Page ___ of ___

API 47- 017 - 06218 Farm name Williams, Larry et al Well number Gains-Koch Unit 1H

PERFORATION RECORD

Stage No.	Perforation date	Perforated from MD ft.	Perforated to MD ft.	Number of Perforations	Formation(s)
* PLEASE SEE ATTACHED EXHIBIT 1					

Please insert additional pages as applicable.

STIMULATION INFORMATION PER STAGE

Complete a separate record for each stimulation stage.

Stage No.	Stimulations Date	Ave Pump Rate (BPM)	Ave Treatment Pressure (PSI)	Max Breakdown Pressure (PSI)	ISIP (PSI)	Amount of Proppant (lbs)	Amount of Water (bbls)	Amount of Nitrogen/other (units)
* PLEASE SEE ATTACHED EXHIBIT 2								

Please insert additional pages as applicable.

RECEIVED

AUG 03 2015

WR-35
Rev. 8/23/13

Page ___ of ___

WV GEOLOGICAL SURVEY
MORGANTOWN, WV

API 47- 017 - 06218 Farm name Williams, Larry et al Well number Gains-Koch Unit 1H

PRODUCING FORMATION(S)	DEPTHS	
Marcellus	7,169' (top) TVD	7,613' (top) MD
_____	_____	_____
_____	_____	_____
_____	_____	_____

Please insert additional pages as applicable.

GAS TEST Build up Drawdown Open Flow OIL TEST Flow Pump

SHUT-IN PRESSURE Surface 3,550 psi Bottom Hole 3,550 psi DURATION OF TEST _____ hrs

OPEN FLOW Gas 1,672 mcfpd Oil 1 bpd NGL _____ bpd Water _____ bpd GAS MEASURED BY Estimated Orifice Pilot

LITHOLOGY/ FORMATION	TOP		BOTTOM		DESCRIBE ROCK TYPE AND RECORD QUANTITY AND TYPE OF FLUID (FRESHWATER, BRINE, OIL, GAS, H ₂ S, ETC)
	DEPTH IN FT NAME TVD	DEPTH IN FT TVD	DEPTH IN FT MD	DEPTH IN FT MD	

	0		0		

*** PLEASE SEE ATTACHED EXHIBIT 3**

Please insert additional pages as applicable.

Drilling Contractor Patterson - UTI Drilling Company LLC
Address 207 Carlton Drive City Eighty Four State PA Zip 15330

Logging Company STRC
Address 1560 Good Hope Pike City Clarksburg State WV Zip 26301

Cementing Company Nabors Completion & Production Services, Co.
Address 1650 Hackers Creek City Jane Lew State WV Zip 26378

Stimulating Company Baker Hughes
Address 837 Philippi Pike City Clarksburg State WV Zip 26301

Please insert additional pages as applicable.

Completed by Megan Darling Telephone 303-357-7230
Signature Megan C. Darling Title Permitting Agent Date 07/31/2015

Submission of Hydraulic Fracturing Chemical Disclosure Information Attach copy of FRACFOCUS Registry

RECEIVED
 AUG 03 2015
 WV GEOLOGICAL SURVEY
 MORGANTOWN, WV

API 47-017-06218 Farm Name Williams, Larry, et al Well Number Gains-Koch Unit 1H

EXHIBIT 1

Stage No.	Perforation Date	Perforated from MD ft.	Perforated to MD ft.	Number of Perforations	Formations
1	11-Nov-14	14,167	14,333	60	Marcellus
2	21-Dec-14	13,970	14,136	60	Marcellus
3	21-Dec-14	13,772	13,939	60	Marcellus
4	21-Dec-14	13,575	13,741	60	Marcellus
5	22-Dec-14	13,378	13,544	60	Marcellus
6	22-Dec-14	13,180	13,347	60	Marcellus
7	22-Dec-14	12,983	13,149	60	Marcellus
8	23-Dec-14	12,786	12,952	60	Marcellus
9	23-Dec-14	12,588	12,755	60	Marcellus
10	24-Dec-14	12,391	12,558	60	Marcellus
11	24-Dec-14	12,194	12,360	60	Marcellus
12	26-Dec-14	11,996	12,163	60	Marcellus
13	27-Dec-14	11,799	11,966	60	Marcellus
14	27-Dec-14	11,602	11,768	60	Marcellus
15	27-Dec-14	11,405	11,571	60	Marcellus
16	27-Dec-14	11,207	11,374	60	Marcellus
17	28-Dec-14	11,010	11,176	60	Marcellus
18	28-Dec-14	10,813	10,979	60	Marcellus
19	28-Dec-14	10,615	10,782	60	Marcellus
20	28-Dec-14	10,418	10,584	60	Marcellus
21	28-Dec-14	10,221	10,387	60	Marcellus
22	29-Dec-14	10,023	10,190	60	Marcellus
23	29-Dec-14	9,826	9,992	60	Marcellus
24	29-Dec-14	9,629	9,795	60	Marcellus
25	29-Dec-14	9,431	9,598	60	Marcellus
26	30-Dec-14	9,234	9,401	60	Marcellus
27	30-Dec-14	9,037	9,203	60	Marcellus
28	30-Dec-14	8,840	9,006	60	Marcellus
29	30-Dec-14	8,642	8,809	60	Marcellus
30	31-Dec-14	8,445	8,611	60	Marcellus
31	31-Dec-14	8,248	8,414	60	Marcellus
32	31-Dec-14	8,050	8,217	60	Marcellus
33	1-Jan-15	7,853	8,019	60	Marcellus
34	1-Jan-15	7,656	7,822	60	Marcellus

RECEIVED
 AUG 03 2015
 WV GEOLOGICAL SURVEY
 MORCANTOWN, WV

API 47-017-06218 Farm Name Williams, Larry et al Well Number Gains-Koch Unit 1H

EXHIBIT 2

Stage No.	Stimulations Date	Avg Pump Rate	Avg Treatment Pressure (PSI)	Max Breakdown Pressure (PSI)	ISIP (PSI)	Amount of Proppant (lbs)	Amount of Water (bbls)	Amount of Nitrogen/ other (units)
1	21-Dec-14	63.9	6,887	N/A	5,010	241,857	6,627	N/A
2	21-Dec-14	64.1	7,020	5,882	5,380	236,614	6,412	N/A
3	22-Dec-14	63.4	6,914	5,628	5,536	243,393	6,511	N/A
4	22-Dec-14	64.2	6,732	5,809	5,265	241,109	6,443	N/A
5	22-Dec-14	64.2	6,794	5,809	5,265	241,109	6,443	N/A
6	22-Dec-14	67.4	6,859	5,618	5,306	239,058	6,425	N/A
7	23-Dec-14	65.5	6,603	5,468	5,279	243,584	6,551	N/A
8	23-Dec-14	79.0	7,350	5,451	5,141	243,661	6,524	N/A
9	23-Dec-14	67.0	6,563	5,431	5,368	244,141	6,398	N/A
10	24-Dec-14	66.0	6,483	5,451	5,102	241,328	6,375	N/A
11	26-Dec-14	66.8	6,714	5,906	5,276	242,746	6,424	N/A
12	26-Dec-14	65.0	6,583	5,429	4,976	219,911	6,836	N/A
13	27-Dec-14	65.0	6,685	5,597	5,291	244,151	6,334	N/A
14	27-Dec-14	0.0	0	5,620	5,344	243,442	6,334	N/A
15	27-Dec-14	71.0	6,701	5,400	5,170	243,417	6,345	N/A
16	27-Dec-14	66.0	6,561	5,853	5,924	241,539	6,334	N/A
17	28-Dec-14	66.0	6,561	5,424	4,914	242,209	6,214	N/A
18	28-Dec-14	71.0	6,682	5,472	5,182	233,319	6,425	N/A
19	28-Dec-14	72.0	6,899	5,732	5,084	241,908	6,377	N/A
20	28-Dec-14	66.0	6,537	5,768	5,214	238,044	6,168	N/A
21	29-Dec-14	66.0	6,124	5,753	5,215	243,186	6,188	N/A
22	29-Dec-14	73.0	6,401	5,860	5,301	241,294	6,198	N/A
23	29-Dec-14	74.0	6,417	5,713	5,576	238,999	6,076	N/A
24	29-Dec-14	67.0	6,447	5,729	5,214	242,504	6,099	N/A
25	30-Dec-14	66.0	6,223	5,558	5,475	240,420	6,133	N/A
26	30-Dec-14	66.0	6,110	5,858	4,710	241,421	6,059	N/A
27	30-Dec-14	71.9	6,276	5,522	4,883	242,314	6,194	N/A
28	30-Dec-14	66.0	6,123	5,376	4,952	242,876	6,261	N/A
29	31-Dec-14	65.0	6,004	5,670	5,232	239,258	6,201	N/A
30	31-Dec-14	71.6	6,292	5,808	4,194	242,384	6,359	N/A
31	31-Dec-14	72.1	6,325	6,976	4,586	244,801	6,059	N/A
32	1-Jan-15	66.0	6,280	5,265	5,046	180,514	6,460	N/A
33	1-Jan-15	65.0	6,264	5,631	4,550	241,036	6,213	N/A
34	1-Jan-15	71.2	6,309	6,190	4,594	247,154	6,101	N/A
	AVG=	65.7	6,345	5,687	5,134	8,134,701	215,101	TOTAL

RECEIVED
 AUG 03 2015
 WV GEOLOGICAL SURVEY
 MORGANTOWN, WV

API 47-017-06218 Farm Name Williams, Larry et al Well Number Gains-Koch Unit 1H

EXHIBIT 3

LITHOLOGY/ FORMATION	TOP DEPTH (TVD) From Surface	BOTTOM DEPTH (TVD) From Surface	TOP DEPTH (MD) From Surface	BOTTOM DEPTH (MD) From Surface
Fresh Water	427'	N/A	427'	N/A
Shale	0	337	0	337
Siltstone/ Sandstone	Est. 337	597	Est. 337	597
Shale	Est. 597	707	Est. 597	707
Sandstone	Est. 707	837	Est. 707	837
Siltstone/ Shale	Est. 837	917	Est. 837	917
Shale	Est. 917	1,727	Est. 917	1,727
Sandstone	Est. 1727	1,787	Est. 1727	1,787
Shale	Est. 1787	1,907	Est. 1787	1,907
Sandstone/ Trace Coal	Est. 1907	1,987	Est. 1907	1,987
Sandstone	Est. 1987	2,127	Est. 1987	2,127
Sandstone/ Trace Coal	Est. 2127	2,147	Est. 2127	2,147
Shale/ Sandstone	Est. 2147	2,223	Est. 2147	2,223
Big Lime	2,223	2,335	2,223	2,335
Big Injun	2,335	2,780	2,335	2,780
Gantz Sand	2,780	2,957	2,780	2,957
Fifty Foot Sandstone	2,957	3,011	2,957	3,011
Gordon	3,011	3,340	3,011	3,340
Fifth Sandstone	3,340	3,368	3,340	3,368
Bayard	3,368	3,749	3,368	3,749
Warren	3,749	4,090	3,749	4,095
Speechley	4,090	4,368	4,095	4,386
Baltown	4,368	4,823	4,386	4,883
Bradford	4,823	5,255	4,883	5,358
Benson	5,255	5,524	5,358	5,653
Alexander	5,524	5,628	5,653	5,767
Elk	5,628	6,201	5,767	6,402
Rhinestreet	6,201	6,686	6,402	6,934
Sycamore	6,686	6,921	6,934	7,203
Middlesex	6,921	7,062	7,203	7,403
Burkett	7,062	7,090	7,403	7,449
Tully	7,090	7,169	7,449	7,613
Marcellus	7,169	NA	7,613	NA

*Please note Antero determines shallow formation tops based on mud and/or wireline logs that are only run on one well on a multi-well pad (Please reference Wireline Logs submitted for the Mt. Salem Revival Unit 1H API# 47-017-06269). The measured depth (MD) data on subsequent wells may be slightly different due to the well's unique departure.

RECEIVED
AUG 03 2015

WV GEOLOGICAL SURVEY
MORGANTOWN, WV

Hydraulic Fracturing Fluid Product Component Information Disclosure

Job Start Date:	12/21/2014
Job End Date:	1/1/2015
State:	West Virginia
County:	Doddridge
API Number:	47-017-06218-00-00
Operator Name:	Antero Resources Corporation
Well Name and Number:	Gains-Koch Unit 1H
Longitude:	-80.69011000
Latitude:	39.32434200
Datum:	NAD83
Federal/Tribal Well:	NO
True Vertical Depth:	7,234
Total Base Water Volume (gal):	6,803,244
Total Base Non Water Volume:	0



Hydraulic Fracturing Fluid Composition:

Trade Name	Supplier	Purpose	Ingredients	Chemical Abstract Service Number (CAS #)	Maximum Ingredient Concentration in Additive (% by mass)**	Maximum Ingredient Concentration in HF Fluid (% by mass)**	Comments
Water	Operator	Carrier	Water	7732-18-5	100.00000	84.42272	
Sand, White, 40/70	Baker Hughes	Proppant	MSDS and Non-MSDS Ingredients Listed Below	N/A		8.43166	
Sand, White, 20/40	Baker Hughes	Proppant	MSDS and Non-MSDS Ingredients Listed Below	N/A		5.44372	
Sand, White, 100 mesh	Baker Hughes	Proppant	MSDS and Non-MSDS Ingredients Listed Below	N/A		1.10876	
HCl, 10.1 - 15%	Baker Hughes	Acidizing	MSDS and Non-MSDS Ingredients Listed Below	N/A		0.33445	SmartCare Product
FRW-18	Baker Hughes	Friction Reducer	MSDS and Non-MSDS Ingredients Listed Below	N/A		0.08839	SmartCare Product
GW-3	Baker Hughes	Gelling Agent	MSDS and Non-MSDS Ingredients Listed Below	N/A		0.07785	
Enzyme G-NE	Baker Hughes	Breaker	MSDS and Non-MSDS Ingredients Listed Below	N/A		0.02624	SmartCare Product

Scalotrol 720	Baker Hughes	Scale Inhibitor	MSDS and Non-MSDS Ingredients Listed Below	N/A			0.02465	SmartCare Product
Alpha 1427	Baker Hughes	Biocide	MSDS and Non-MSDS Ingredients Listed Below	N/A			0.01426	SmartCare Product
GW-3LDF	Baker Hughes	Gelling Agent	MSDS and Non-MSDS Ingredients Listed Below	N/A			0.00439	SmartCare Product
Ferrotrol 300L	Baker Hughes	Iron Control	MSDS and Non-MSDS Ingredients Listed Below	N/A			0.00231	SmartCare Product
CI-39	Baker Hughes	Corrosion Inhibitor	MSDS and Non-MSDS Ingredients Listed Below	N/A			0.00067	
CI-14	Baker Hughes	Corrosion Inhibitor	MSDS and Non-MSDS Ingredients Listed Below	N/A			0.00001	SmartCare Product
Ingredients shown above are subject to 29 CFR 1910.1200(i) and appear on Material Safety Data Sheets (MSDS). Ingredients shown below are Non-MSDS.								
Ingredients in Additive (s) (MSDS and non- MSDS)	Baker Hughes	See Trade Name(s) List						
			Crystalline Silica (Quartz)	14808-60-7		100.00000	14.98061	
			Water	7732-18-5		95.00000	0.36657	
			Guar Gum	9000-30-0		100.00000	0.08047	
			Hydrochloric Acid	7647-01-0		15.00000	0.05016	
			Hydrotreated Light Distillate	64742-47-8		30.00000	0.02651	
			Poly (acrylamide-co-acrylic acid) partial sodium salt	62649-23-4		30.00000	0.02651	
			Ethylene Glycol	107-21-1		45.00000	0.01109	
			2-Propenoic, Polymer with Sodium Phosphinate, Sodium Salt	71050-62-9		20.00000	0.00493	
			Sodium Chloride	7647-14-5		5.00000	0.00467	
			Glutaraldehyde	111-30-8		30.00000	0.00428	
			Mineral Oil	8042-47-5		70.00000	0.00307	
			Ammonium Chloride	12125-02-9		3.00000	0.00265	
			Oleamide DEA	93-83-4		2.00000	0.00177	
			Alcohols, C12-16, ethoxylated	68551-12-2		2.00000	0.00177	
			Didecyl Dimethyl Ammonium Chloride	7173-51-5		10.00000	0.00143	
			Citric Acid	77-92-9		60.00000	0.00139	
			Paraffinic Petroleum Distillate	64742-55-8		30.00000	0.00132	
			Petroleum Distillates	64742-47-8		30.00000	0.00132	
			Hemicellulase Enzyme Concentrate	9025-56-3		5.00000	0.00131	
			Calcium Chloride	10043-52-4		5.00000	0.00123	
			Quaternary Ammonium Compound	68424-85-1		5.00000	0.00075	
			Ethanol	64-17-5		5.00000	0.00071	
			Polyoxyethylene Sorbitan Monooleate	9005-65-6		0.50000	0.00044	

RECEIVED

AUG 03 2015

WV GEOLOGICAL SURVEY
MORGANTOWN, WV

			Sorbilan Monooleate	1338-43-8	0.50000	0.00044
			Oxyalkylated Fatty Acid	61791-002	40.00000	0.00027
			Potassium Chloride	7447-40-7	1.00000	0.00025
			Isotridecanol, ethoxylated	9043-30-5	5.00000	0.00022
			Crystalline Silica: Quartz	14808-60-7	5.00000	0.00022
			1-butoxy-2-propanol	513-66-8	5.00000	0.00022
			Tar Bases, Quinoline Derivs., Benzyl Chloride-Quaternized	72480-70-7	30.00000	0.00020
			Aldehyde	104-55-2	30.00000	0.00020
			Formic Acid	64-18-6	30.00000	0.00020
			Sulfurized polyolefin	68037-13-8	5.00000	0.00003
			Isopropanol	67-63-0	5.00000	0.00003
			Potassium Iodide	7681-11-0	2.00000	0.00001
			Methanol	67-56-1	100.00000	0.00001
			Polyethylene	7756-94-7	1.00000	0.00001
			2-butoxy-1-propanol	15821-83-7	0.10000	0.00000
			Potassium Acetate	127-08-2	0.50000	0.00000
			Polyoxyalkylenes	68951-67-7	30.00000	0.00000
			Fatty Acids	61790-12-3	10.00000	0.00000
			Modified Thiourea Polymer	68527-49-1	7.00000	0.00000
			Propargyl Alcohol	107-19-7	5.00000	0.00000
			Olefin	64743-02-8	5.00000	0.00000
			Formaldehyde	50-00-0	1.00000	0.00000

RECEIVED
AUG 03 2015
MINERALOGICAL SURVEY
U.S. GEOLOGICAL SURVEY

* Total Water Volume sources may include fresh water, produced water, and/or recycled water
 ** Information is based on the maximum potential for concentration and thus the total may be over 100%

Note: For Field Development Products (products that begin with FDP), MSDS level only information has been provided.
 Ingredient information for chemicals subject to 29 CFR 1910.1200(i) and Appendix D are obtained from suppliers Material Safety Data Sheets (MSDS)

LATITUDE 39°20'00"

6,692'

5,822' TO BOTTOM HOLE
LATITUDE 39°20'00"

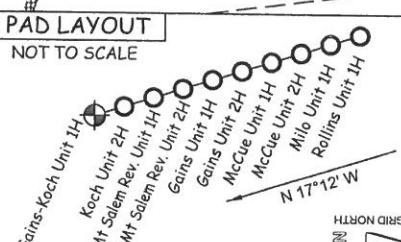
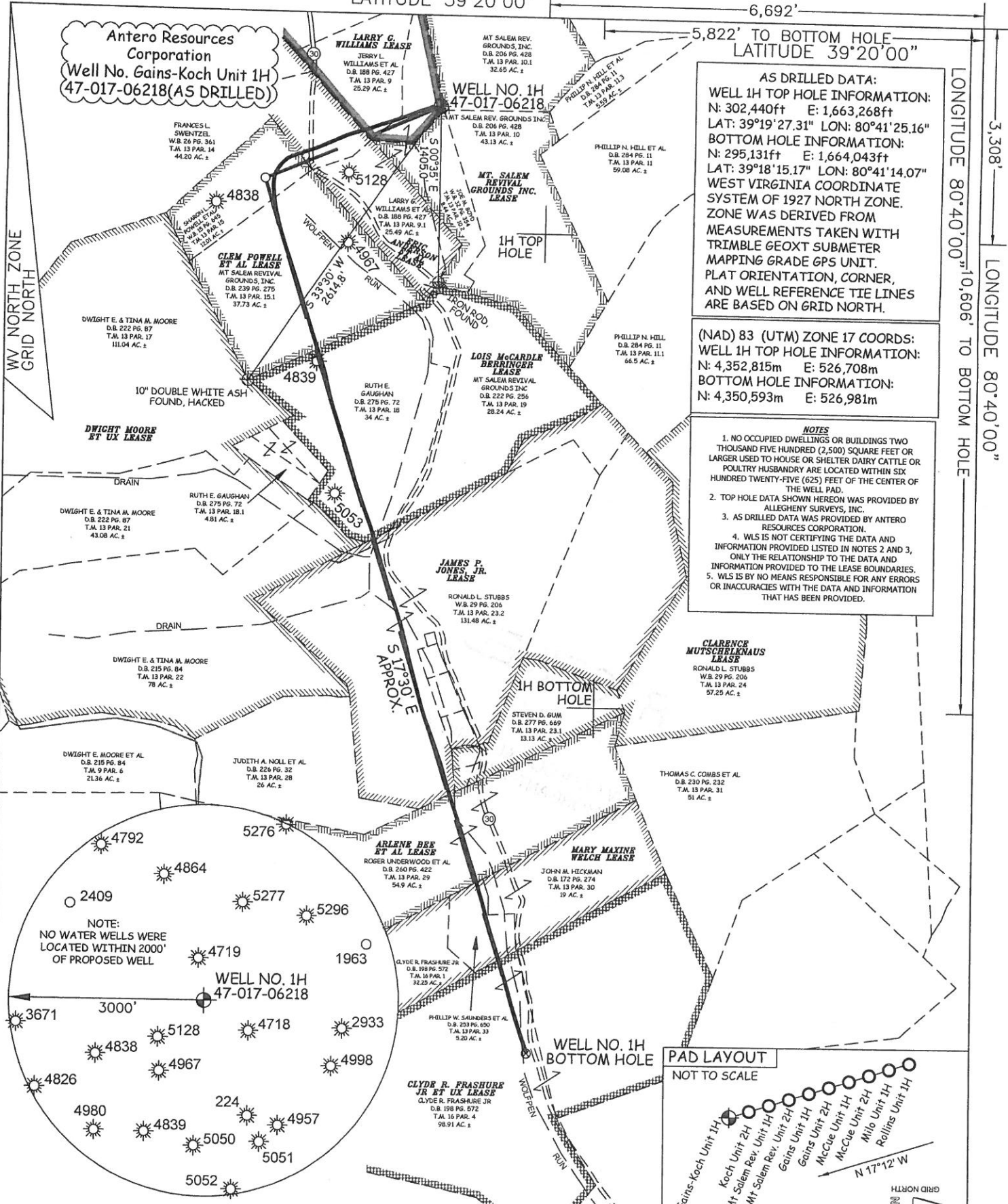
LONGITUDE 80°40'00" TO BOTTOM HOLE
3,308'
LONGITUDE 80°40'00"

Antero Resources Corporation
Well No. Gains-Koch Unit 1H
47-017-06218 (AS DRILLED)

AS DRILLED DATA:
WELL 1H TOP HOLE INFORMATION:
N: 302,440ft E: 1,663,268ft
LAT: 39°19'27.31" LON: 80°41'25.16"
BOTTOM HOLE INFORMATION:
N: 295,131ft E: 1,664,043ft
LAT: 39°18'15.17" LON: 80°41'14.07"
WEST VIRGINIA COORDINATE SYSTEM OF 1927 NORTH ZONE. ZONE WAS DERIVED FROM MEASUREMENTS TAKEN WITH TRIMBLE GEOXT SUBMETER MAPPING GRADE GPS UNIT. PLAT ORIENTATION, CORNER, AND WELL REFERENCE TIE LINES ARE BASED ON GRID NORTH.

(NAD) 83 (UTM) ZONE 17 COORDS:
WELL 1H TOP HOLE INFORMATION:
N: 4,352,815m E: 526,708m
BOTTOM HOLE INFORMATION:
N: 4,350,593m E: 526,981m

- NOTES
1. NO OCCUPIED DWELLINGS OR BUILDINGS TWO THOUSAND FIVE HUNDRED (2,500) SQUARE FEET OR LARGER USED TO HOUSE OR SHELTER DAIRY CATTLE OR POULTRY HUSBANDRY ARE LOCATED WITHIN SIX HUNDRED TWENTY-FIVE (625) FEET OF THE CENTER OF THE WELL PAD.
 2. TOP HOLE DATA SHOWN HEREON WAS PROVIDED BY ALLEGHENY SURVEYS, INC.
 3. AS DRILLED DATA WAS PROVIDED BY ANTERO RESOURCES CORPORATION.
 4. WLS IS NOT CERTIFYING THE DATA AND INFORMATION PROVIDED LISTED IN NOTES 2 AND 3, ONLY THE RELATIONSHIP TO THE DATA AND INFORMATION PROVIDED TO THE LEASE BOUNDARIES.
 5. WLS IS BY NO MEANS RESPONSIBLE FOR ANY ERRORS OR INACCURACIES WITH THE DATA AND INFORMATION THAT HAS BEEN PROVIDED.



JOB # 13-077WA
DRAWING # GAINS-KOCHUNIT1HAD
SCALE 1" = 1000'
MINIMUM DEGREE OF ACCURACY SUBMETER
PROVEN SOURCE OF ELEV. SUBMETER MAPPING GRADE GPS



STATE OF WEST VIRGINIA, DIVISION OF ENVIRONMENTAL PROTECTION, OFFICE OF OIL AND GAS

WILLOW LAND SURVEYING PLLC
220 MASONIC AVE. PENNSBORO WEST VIRGINIA 26415

- LEGEND
- Surface Owner Boundary Lines +/-
 - - - Interior Surface Tracts +/-
 - - - Existing Fence
 - ⊕ Found monument, as noted
 - Proposed Well Path
 - ⊗ As Drilled Well Path

DATE 04/20/15
OPERATOR'S WELL# GAINS-KOCH UNIT 1H

STATE OF WEST VIRGINIA DEPARTMENT OF ENERGY DIVISION OF OIL AND GAS
WELL TYPE: OIL GAS X LIQUID INJECTION
(IF "GAS") PRODUCTION X STORAGE DEEP SHALLOW X
LOCATION: ELEVATION 1,402' ORIGINAL - 1,376' AS-DRILLED WATERSHED HEADWATERS MIDDLE ISLAND CREEK
QUADRANGLE SMITHBURG 7.5'
SURFACE OWNER LARRY WILLIAMS ET AL ACREAGE 25.49 ACRES +/-
OIL & GAS ROYALTY OWNER LARRY G. WILLIAMS; ERIC ANDERSON ET AL; CLEM POWELL ET AL; LOIS McCARDLE BERRINGER; JAMES P. JONES, JR.; ARLENE BEE ET AL; MARY MAXINE WELCH; CLYDE RYLAN FRASHURE JR. ET UX 67.5 ACRES±; 141 ACRES±; 55 ACRES±; 63.434 ACRES±; 131 ACRES±
PROPOSED WORK: DRILL CONVERT DRILL DEEPER REDRILL FRACTURE OR STIMULATE
PLUG OFF OLD FORMATION PERFORATE NEW FORMATION OTHER PHYSICAL CHANGE IN WELL (SPECIFY) (X) AS DRILLED
TARGET FORMATION MARCELLUS ESTIMATED DEPTH 7,202' TVD 14,425' MD

API WELL # 47 - 017 - 06218
STATE COUNTY PERMIT

WELL OPERATOR ANTERO RESOURCES CORP. ADDRESS 1615 WYNKOOP STREET DENVER, CO 80202
DESIGNATED AGENT DIANNA STAMPER CT CORPORATION SYSTEM ADDRESS 5400 D BIG TYLER ROAD CHARLESTON, WV 25313