

State of West Virginia  
Department of Environmental Protection - Office of Oil and Gas  
Well Operator's Report of Well Work

API 47-017-06219 County Doddridge District Greenbrier  
Quad New Milton 7.5' Pad Name Trent Pad Field/Pool Name \_\_\_\_\_  
Farm name Clarence Trent Jr. et al Well Number Bowen Unit 1H  
Operator (as registered with the OOG) Antero Resources Corporation  
Address 1615 Wynkoop Street City Denver State CO Zip 80202

As Drilled location NAD 83/UTM Attach an as-drilled plat, profile view, and deviation survey  
Top hole Northing 4,340,073m Easting 532,018m  
Landing Point of Curve Northing 4,339,781.90m Easting 531,866.09m  
Bottom Hole Northing 4,337,789m Easting 532,485m

Elevation (ft) 1409' GL Type of Well  New  Existing Type of Report  Interim  Final  
Permit Type  Deviated  Horizontal  Horizontal 6A  Vertical Depth Type  Deep  Shallow  
Type of Operation  Convert  Deepen  Drill  Plug Back  Redrilling  Rework  Stimulate  
Well Type  Brine Disposal  CBM  Gas  Oil  Secondary Recovery  Solution Mining  Storage  Other \_\_\_\_\_  
Type of Completion  Single  Multiple Fluids Produced  Brine  Gas  NGL  Oil  Other \_\_\_\_\_  
Drilled with  Cable  Rotary

Drilling Media Surface hole  Air  Mud  Fresh Water Intermediate hole  Air  Mud  Fresh Water  Brine  
Production hole  Air  Mud  Fresh Water  Brine

Mud Type(s) and Additive(s)  
Air - Foam & 4% KCL

Mud - Polymer

Date permit issued 5/10/2013 Date drilling commenced 9/26/2013 Date drilling ceased 10/24/2013  
Date completion activities began 11/8/2013 Date completion activities ceased 1/23/2014  
Verbal plugging (Y/N) N/A Date permission granted N/A Granted by N/A

Please note: Operator is required to submit a plugging application within 5 days of verbal permission to plug

Freshwater depth(s) ft 32', 112' Open mine(s) (Y/N) depths N  
Salt water depth(s) ft None Identified Void(s) encountered (Y/N) depths N  
Coal depth(s) ft None Identified Cave-ins encountered (Y/N) depths N  
Is coal being mined in area (Y/N) N

RECEIVED  
Office of Oil and Gas  
MAY 26 2015  
WV Department of  
Environmental Protection

Reviewed by:  
AL 5/27/15  
W.S. 06/05/2015

API 47-017 - 06219 Farm name Clarence Trent Jr. et al Well number Bowen Unit 1H

CASING STRINGS	Hole Size	Casing Size	Depth	New or Used	Grade wt/ft	Basket Depth(s)	Did cement circulate (Y/ N) * Provide details below*
Conductor	24"	20"	90'	New	94#/H-40	N/A	Y
Surface	17-1/2"	13-3/8"	357'	New	48#/H-40	N/A	Y
Coal							
Intermediate 1	12-1/4"	9-5/8"	2648'	New	36#/J-55	N/A	Y
Intermediate 2							
Intermediate 3							
Production	8-3/4"/8-1/2"	5-1/2"	14,901'	New	20#/P-110	N/A	Y
Tubing		2-3/8"	7729'	New	4.7#/N-80	N/A	N/A
Packer type and depth set		N/A					

Comment Details \_\_\_\_\_

CEMENT DATA	Class/Type of Cement	Number of Sacks	Slurry wt (ppg)	Yield (ft <sup>3</sup> /sks)	Volume (ft <sup>3</sup> )	Cement Top (MD)	WOC (hrs)
Conductor	Class A	405 sx	15.6	1.18	478 Cu. Ft.	0'	8 Hrs.
Surface	Class A	403 sx	15.6	1.18	476 Cu. Ft.	0'	8 Hrs.
Coal							
Intermediate 1	Class A	1034 sx	15.6	1.18	1221 Cu. Ft.	0'	8 Hrs.
Intermediate 2							
Intermediate 3							
Production	Class H	1157 sx (Lead), 1160 sx (Tail)	14.5 (Lead), 15.2 (Tail)	1.30 (Lead), 1.80 (Tail)	3754 Cu. Ft.	~500' into Intermediate Casing	8 Hrs.
Tubing							

Drillers TD (ft) 14,901' MD, 7401' TVD (BHL); 7460' TVD (Deepest Point Drilled) Loggers TD (ft) 14,860' MD  
 Deepest formation penetrated Marcellus Plug back to (ft) N/A  
 Plug back procedure N/A

Kick off depth (ft) 6903'

\*\* This is a subsequent well. Antero only runs wireline logs on one well on a multi-well pad (Bowen Unit 2H API# 47-017-06167). Please reference the wireline logs submitted with Form WR-35 for the Bowen Unit 2H. A Cement Bond Log has been included with this submittal.

Check all wireline logs run  caliper  density  deviated/directional  induction  neutron  resistivity  gamma ray  temperature

Well cored  Yes  No Conventional Sidewall Were cuttings collected  Yes  No

DESCRIBE THE CENTRALIZER PLACEMENT USED FOR EACH CASING STRING \_\_\_\_\_

Conductor - 0  
 Surface - 1 above guide shoe, 1 above insert float, 1 every 4th joint to surface  
 Intermediate - 1 above float joint, 1 above float collar, 1 every 4th joint to surface  
 Production - 1 above float joint, 1 below float collar, 1 every 3rd joint to top of cement

WAS WELL COMPLETED AS SHOT HOLE  Yes  No DETAILS \_\_\_\_\_

**RECEIVED**  
Office of Oil and Gas

WAS WELL COMPLETED OPEN HOLE?  Yes  No DETAILS \_\_\_\_\_

MAY 26 2015

WERE TRACERS USED  Yes  No TYPE OF TRACER(S) USED Radioactive & Chemical

WV Department of  
Environmental Protection  
06/05/2015



API 47- 017 - 06219 Farm name Clarence Trent Jr. et al Well number Bowen Unit 1H

PRODUCING FORMATION(S)	DEPTHS		
		TVD	MD
Marcellus	7401' (Top)	7762' (Top)	

Please insert additional pages as applicable.

GAS TEST  Build up  Drawdown  Open Flow OIL TEST  Flow  Pump  
 SHUT-IN PRESSURE Surface 3950 psi Bottom Hole --- psi DURATION OF TEST --- hrs  
 OPEN FLOW Gas 1675 mcfpd Oil --- bpd NGL --- bpd Water --- bpd GAS MEASURED BY  
 Estimated  Orifice  Pilot

LITHOLOGY/ FORMATION	TOP	BOTTOM	TOP	BOTTOM	DESCRIBE ROCK TYPE AND RECORD QUANTITY AND TYPE OF FLUID (FRESHWATER, BRINE, OIL, GAS, H <sub>2</sub> S, ETC)
	DEPTH IN FT NAME TVD	DEPTH IN FT TVD	DEPTH IN FT MD	DEPTH IN FT MD	
	0		0		
					<b>SEE ATTACHED EXHIBIT 3</b>

Please insert additional pages as applicable.

Drilling Contractor Patterson – UTI Drilling Company LLC  
 Address 207 Carlton Drive City Eighty Four State PA Zip 15330  
 Logging Company Rush Wellsite Services  
 Address 600 Alpha Drive City Canonsburg State PA Zip 15317  
 Cementing Company Nabors Completion & Production Services, Co. (bought Superior)  
 Address 1650 Hackers Creek City Jane Lew State WV Zip 26378  
 Stimulating Company US Well Services  
 Address 533 Industrial Park Drive City Jane Lew State WV Zip 26378

Please insert additional pages as applicable.

Completed by Natalie Komp Telephone 303-357-6820  
 Signature *Natalie Komp* Title Permitting Agent Date 5/8/2015

**RECEIVED**  
Office of Oil and Gas

**API 47-017-06219 Farm Name Clarence Trent Jr. et al Well Number Bowen Unit 1H**

**EXHIBIT 1**

Stage No.	Perforation Date	Perforated from MD ft.	Perforated to MD ft.	Number of Perforations	Formations
1	8-Nov-13	14,624	14,816	60	Marcellus
2	1-Dec-13	14,397	14,589	60	Marcellus
3	1-Dec-13	14,170	14,361	60	Marcellus
4	2-Dec-13	13,943	14,134	60	Marcellus
5	2-Dec-13	13,715	13,907	60	Marcellus
6	2-Dec-13	13,488	13,679	60	Marcellus
7	3-Dec-13	13,261	13,452	60	Marcellus
8	3-Dec-13	13,033	13,225	60	Marcellus
9	3-Dec-13	12,806	12,997	60	Marcellus
10	3-Dec-13	12,579	12,770	60	Marcellus
11	4-Dec-13	12,351	12,543	60	Marcellus
12	4-Dec-13	12,124	12,315	60	Marcellus
13	4-Dec-13	11,897	12,088	60	Marcellus
14	4-Dec-13	11,669	11,861	60	Marcellus
15	5-Dec-13	11,442	11,634	60	Marcellus
16	6-Dec-13	11,215	11,406	60	Marcellus
17	6-Dec-13	10,988	11,179	60	Marcellus
18	6-Dec-13	10,760	10,952	60	Marcellus
19	6-Dec-13	10,533	10,724	60	Marcellus
20	7-Dec-13	10,306	10,497	60	Marcellus
21	7-Dec-13	10,078	10,270	60	Marcellus
22	7-Dec-13	9,851	10,042	60	Marcellus
23	7-Dec-13	9,624	9,815	60	Marcellus
24	7-Dec-13	9,396	9,588	60	Marcellus
25	8-Dec-13	9,169	9,360	60	Marcellus
26	9-Dec-13	8,942	9,133	60	Marcellus
27	9-Dec-13	8,714	8,906	60	Marcellus
28	10-Dec-13	8,487	8,679	60	Marcellus
29	10-Dec-13	8,260	8,451	60	Marcellus
30	10-Dec-13	8,032	8,224	60	Marcellus
31	10-Dec-13	7,805	7,997	60	Marcellus

**RECEIVED  
Office of Oil and Gas**

**MAY 26 2015**

**WV Department of  
Environmental Protection**

06/05/2015

## EXHIBIT 2

Stage No.	Stimulations Date	Avg Pump Rate	Avg Treatment Pressure (PSI)	Max Breakdown Pressure (PSI)	ISIP (PSI)	Amount of Proppant (lbs)	Amount of Water (bbls)	Amount of Nitrogen/ other (units)
1	1-Dec-13	69.0	7,871	6,187	5,774	205,660	7,464	N/A
2	1-Dec-13	71.0	7,467	6,892	5,851	205,640	7,533	N/A
3	1-Dec-13	76.0	7,693	6,117	5,900	247,400	7,516	N/A
4	2-Dec-13	73.0	7,730	6,519	5,927	223,160	6,276	N/A
5	2-Dec-13	76.0	7,670	5,944	5,675	265,280	6,947	N/A
6	2-Dec-13	72.5	7,645	6,144	5,781	267,000	6,829	N/A
7	3-Dec-13	76.5	7,572	5,852	5,983	266,600	6,787	N/A
8	3-Dec-13	77.0	7,626	6,079	5,717	259,420	6,833	N/A
9	3-Dec-13	76.0	7,560	6,154	5,721	228,400	7,029	N/A
10	3-Dec-13	77.0	7,703	6,137	6,021	263,350	6,799	N/A
11	4-Dec-13	77.0	7,663	6,057	5,994	268,280	6,719	N/A
12	4-Dec-13	78.0	7,658	6,124	5,873	266,700	6,691	N/A
13	4-Dec-13	78.5	7,611	6,210	5,981	240,530	6,403	N/A
14	4-Dec-13	79.6	7,471	4,952	5,993	269,120	6,743	N/A
15	5-Dec-13	78.9	7,623	6,319	5,801	251,320	6,692	N/A
16	6-Dec-13	79.6	7,627	6,489	5,906	260,900	6,711	N/A
17	6-Dec-13	78.0	7,447	6,009	5,626	264,980	6,651	N/A
18	6-Dec-13	78.0	7,550	6,381	5,897	265,000	6,645	N/A
19	6-Dec-13	79.3	7,018	5,572	5,593	265,200	6,695	N/A
20	7-Dec-13	79.0	7,460	5,985	4,874	264,050	6,639	N/A
21	7-Dec-13	77.0	7,854	6,374	5,119	219,720	7,165	N/A
22	7-Dec-13	79.0	7,256	5,804	5,249	265,520	6,553	N/A
23	7-Dec-13	79.0	7,437	5,956	5,019	264,500	6,551	N/A
24	7-Dec-13	79.1	7,411	5,824	5,605	263,700	6,575	N/A
25	8-Dec-13	79.8	7,242	5,540	5,579	263,270	6,577	N/A
26	9-Dec-13	76.0	7,042	5,769	5,538	263,820	6,525	N/A
27	9-Dec-13	78.3	7,217	5,684	5,246	177,300	6,395	N/A
28	10-Dec-13	73.4	7,907	5,996	4,749	204,550	7,074	N/A
29	10-Dec-13	78.0	7,656	6,152	5,620	264,860	6,691	N/A
30	10-Dec-13	78.0	7,158	5,751	5,944	264,230	6,433	N/A
31	10-Dec-13	77.7	6,945	5,933	4,154	260,100	6,441	N/A
	AVG=	76.9	7,509	6,029	5,604	7,759,560	209,582	TOTAL

RECEIVED  
Office of Oil and Gas

MAY 26 2015

WV Department of  
Environmental Protection  
06/05/2015

**EXHIBIT 3**

LITHOLOGY/ FORMATION	TOP DEPTH (TVD)	BOTTOM DEPTH (TVD)	TOP DEPTH (MD)	BOTTOM DEPTH (MD)
	From Surface	From Surface	From Surface	From Surface
Freshwater	32	NA	32	NA
Freshwater	112	NA	112	NA
Sandstone	0	77	0	77
Shale	est. 77	632	est. 77	632
Sandstone	est. 632	697	est. 632	697
Shale and Limestone	est. 697	877	est. 697	877
Sandstone	est. 877	907	est. 877	907
Shale	est. 907	1,037	est. 907	1,037
Sandstone and Coal	est. 1037	1,087	est. 1037	1,087
Shale	est. 1087	1,237	est. 1087	1,237
Sandstone	est. 1237	1,267	est. 1237	1,267
Shale	est. 1267	1,767	est. 1267	1,767
Sandstone	est. 1767	1,897	est. 1767	1,897
Shale	est. 1897	1,957	est. 1897	1,957
Sandstone and Coal	est. 1957	1,987	est. 1957	1,987
Shale	est. 1987	2,077	est. 1987	2,077
Sandstone	est. 2077	2,147	est. 2077	2,147
Shale	est. 2147	2,395	est. 2147	2,395
Big Lime	2,395	2,529	2,395	2,529
Big Injun	2,529	5,761	2,529	5,761
Gantz Sand	5,761	2,978	5,761	2,978
Fifty Foot Sandstone	2,978	3,143	2,978	3,143
Gordon	3,143	3,484	3,143	3,484
Fifth Sandstone	3,484	3,550	3,484	3,550
Bayard	3,550	3,766	3,550	3,766
Warren	3,766	4,092	3,766	4,092
Speechley	4,092	4,296	4,092	4,296
Baltown	4,296	4,924	4,296	4,924
Bradford	4,924	5,399	4,924	5,399
Benson	5,399	5,651	5,399	5,652
Alexander	5,651	5,890	5,652	5,894
Elk	5,890	6,433	5,894	6,477
Rhinestreet	6,433	6,952	6,477	7,055
Sycamore	6,952	7,108	7,055	7,243
Middlesex	7,108	7,262	7,243	7,469
Burkett	7,262	7,286	7,469	7,511
Tully	7,286	7,401	7,511	7,762
Marcellus	7,401	NA	7,762	NA

\*Please note Antero determines shallow formation tops based on mud and/or wireline logs that are only run on one well on a multi-well pad. The measured depth (MD) data on subsequent wells may be slightly different due to the well's unique departure.

**RECEIVED**  
Office of Oil and Gas

MAY 26 2015

WV Department of  
Environmental Protection

06/05/2015

# Hydraulic Fracturing Fluid Product Component Information Disclosure

Job Start Date:	12/1/2013
Job End Date:	12/10/2013
State:	West Virginia
County:	Doddridge
API Number:	47-017-06219-00-00
Operator Name:	Antero Resources Corporation
Well Name and Number:	Bowen Unit 1H
Longitude:	-80.62937220
Latitude:	39.20917220
Datum:	NAD27
Federal/Tribal Well:	NO
True Vertical Depth:	7,468
Total Base Water Volume (gal):	8,777,496
Total Base Non Water Volume:	384,320

## Hydraulic Fracturing Fluid Composition:

Trade Name	Supplier	Purpose	Ingredients	Chemical Service Number (CAS #)	Maximum Ingredient Concentration in Additive (% by mass)**	Maximum Ingredient Concentration in HF Fluid (% by mass)**	Comments
Water	Antero Resources	Base Fluid	Water	7732-18-5	100.00000	90.17302	
Sand	J.S. Well Services, LLC	Proppant	Crystalline Silica, quartz	14808-60-7	100.00000	9.55822	
HCL Acid (12.6%-18.0%)	J.S. Well Services, LLC	Bulk Acid	Water	7732-18-5	87.50000	0.08531	
WFRA-405	J.S. Well Services, LLC	Friction Reducer	Hydrogen Chloride	7641-01-1	18.00000	0.02038	
			Water	7732-18-5	40.00000	0.02370	
			Anionic Polyacrylamide	Proprietary		0.02370	
			Petroleum Distillates	64742-47-8	22.00000	0.01908	
			Ethoxylated alcohol blend	Proprietary	5.00000	0.00296	
			Crystalline Salt	12125-02-9	5.00000	0.00296	
LGC-15	J.S. Well Services, LLC	Gelling Agents					
			Guar Gum	9000-30-0	50.00000	0.03245	
			Petroleum Distillates	64742-47-8	60.00000	0.03073	
			Suspending agent (solid)	14808-60-7	3.00000	0.00496	

06/05/2015

RECEIVED  
Office of Oil and Gas  
WV Department of Environmental Protection

MAY 26 2015





RECEIVED  
Office of Oil and Gas  
MAY 26 2015  
WV Department of  
Environmental Protection

SI-1000	U.S. Well Services, LLC	Scale Inhibitor	Surfactant	68439-51-0	3.00000	0.00195
			Anionic Copolymer	Proprietary		0.00446
			Ethylene Glycol	107-21-1	20.00000	0.00403
			Water	7732-18-5	30.00000	0.00336
K-BAC 1020	U.S. Well Services, LLC	Anti-Bacterial Agent				
			2,2-dibromo-3-nitropropionamide	10222-01-2	20.00000	0.00470
			Deionized Water	7732-18-5	28.00000	0.00268
AP One	U.S. Well Services, LLC	Gel Breakers				
			Ammonium Persulfate	7727-54-0	100.00000	0.00084
AI-300	U.S. Well Services, LLC	Acid Corrosion Inhibitors				
			Ethylene Glycol	107-21-1	31.00000	0.00022
			N,N-Dimethylformamide	68-12-2	15.00000	0.00007
			Tar bases, quinoline derivs, benzyl chloride-quaternized	72480-70-7	13.00000	0.00006
			Cinnamaldehyde	104-55-2	5.00000	0.00006
			2-Butoxyethanol	111-76-2	7.00000	0.00005
			Water	7732-18-5	20.00000	0.00002
			Ethoxylated Nonylphenol	68412-54-4	5.00000	0.00002
			Isopropyl Alcohol	67-63-0	3.00000	0.00001
			Triethyl Phosphate	78-40-0	3.00000	0.00001

Ingredients shown above are subject to 29 CFR 1910.1200(i) and appear on Material Safety Data Sheets (MSDS). Ingredients shown below are Non-MSDS.

\* Total Water Volume sources may include fresh water, produced water, and/or recycled water

\*\* Information is based on the maximum potential for concentration and thus the total may be over 100%

Note: For Field Development Products (products that begin with FDP), MSDS level only information has been provided. Ingredient information for chemicals subject to 29 CFR 1910.1200(i) and Appendix D are obtained from suppliers Material Safety Data Sheets (MSDS)

LATITUDE 39°15'00" | -1,225'

11,535' TO BOTTOM HOLE

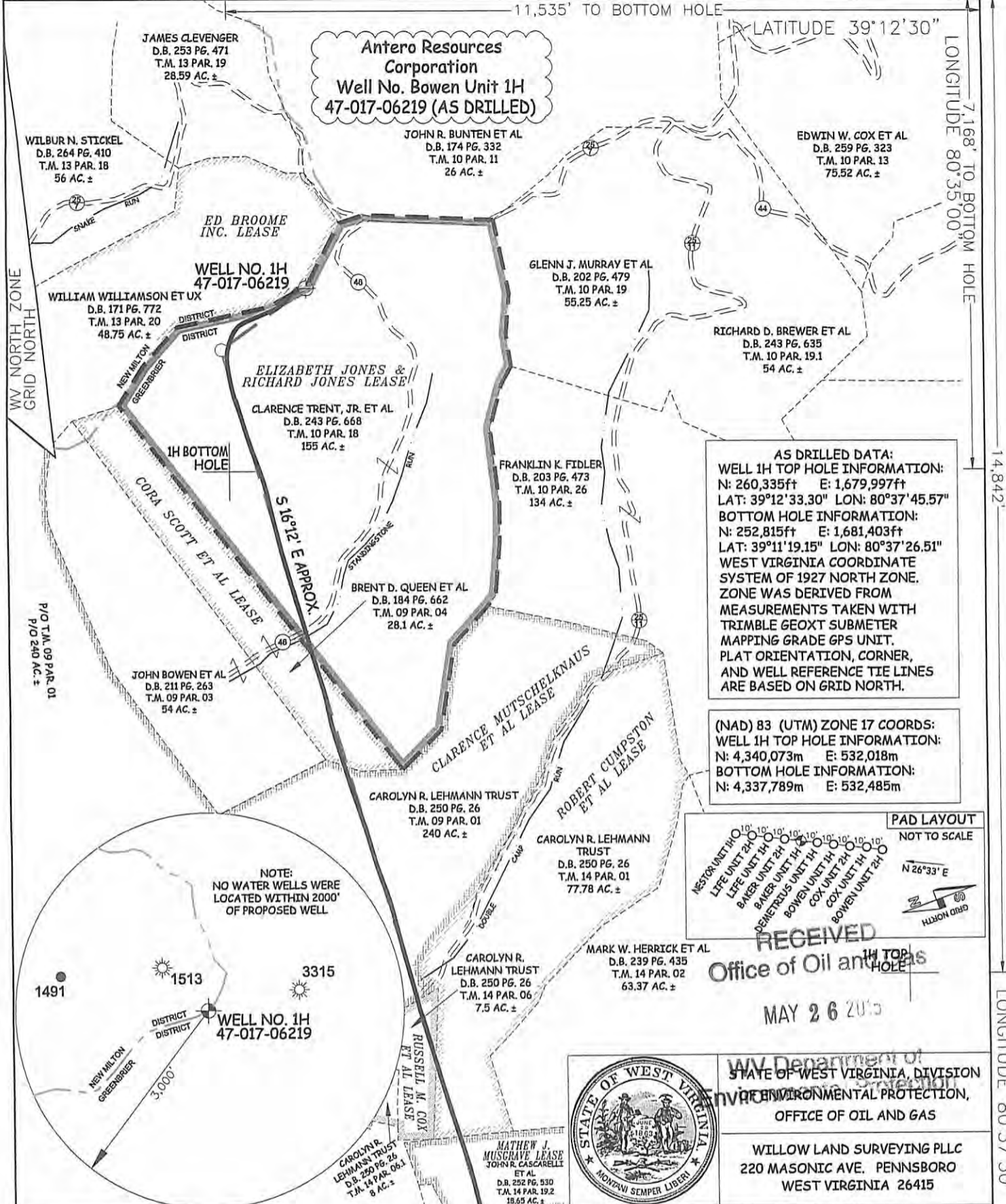
LATITUDE 39°12'30"

LONGITUDE 80°35'00"

14,842'

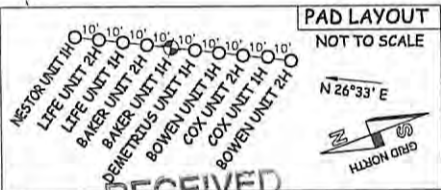
LONGITUDE 80°37'30"

### Antero Resources Corporation Well No. Bowen Unit 1H 47-017-06219 (AS DRILLED)



**AS DRILLED DATA:**  
WELL 1H TOP HOLE INFORMATION:  
N: 260,335ft E: 1,679,997ft  
LAT: 39°12'33.30" LON: 80°37'45.57"  
BOTTOM HOLE INFORMATION:  
N: 252,815ft E: 1,681,403ft  
LAT: 39°11'19.15" LON: 80°37'26.51"  
WEST VIRGINIA COORDINATE SYSTEM OF 1927 NORTH ZONE. ZONE WAS DERIVED FROM MEASUREMENTS TAKEN WITH TRIMBLE GEOXT SUBMETER MAPPING GRADE GPS UNIT. PLAT ORIENTATION, CORNER, AND WELL REFERENCE TIE LINES ARE BASED ON GRID NORTH.

(NAD) 83 (UTM) ZONE 17 COORDS:  
WELL 1H TOP HOLE INFORMATION:  
N: 4,340,073m E: 532,018m  
BOTTOM HOLE INFORMATION:  
N: 4,337,789m E: 532,485m



RECEIVED  
Office of Oil and Gas  
MAY 26 2015



JOB # 12-066WA  
DRAWING # BOWEN1HAD  
SCALE 1" = 1000'  
MINIMUM DEGREE OF ACCURACY SUBMETER  
PROVEN SOURCE OF ELEV. SUBMETER MAPPING GRADE GPS

- NOTE**
- NO OCCUPIED DWELLINGS OR BUILDINGS TWO THOUSAND FIVE HUNDRED (2,500) SQUARE FEET OR LARGER USED TO HOUSE OR SHELTER DAIRY CATTLE OR POULTRY HUSBANDRY ARE LOCATED WITHIN SIX HUNDRED TWENTY-FIVE (625) FEET OF THE CENTER OF THE WELL PAD.
  - TOP HOLE DATA SHOWN HEREON WAS PROVIDED BY ALLEGHENY SURVEYS, INC.
  - AS DRILLED DATA WAS PROVIDED BY ANTERO RESOURCES CORPORATION.
  - WLS IS NOT CERTIFYING THE DATA AND INFORMATION PROVIDED LISTED IN NOTES 2 AND 3, ONLY THE RELATIONSHIP TO THE DATA AND INFORMATION PROVIDED TO THE LEASE BOUNDARIES.
  - WLS IS BY NO MEANS RESPONSIBLE FOR ANY ERRORS OR INACCURACIES WITH THE DATA AND INFORMATION THAT HAS BEEN PROVIDED.

STATE OF WEST VIRGINIA DEPARTMENT OF ENERGY DIVISION OF OIL AND GAS

WELL TYPE: OIL  GAS  LIQUID INJECTION  WASTE DISPOSAL   
(IF "GAS") PRODUCTION  STORAGE  DEEP  SHALLOW   
LOCATION: ELEVATION 1,420' ORIGINAL - 1,409' AS DRILLED WATERSHED HEADWATERS MIDDLE ISLAND CREEK  
QUADRANGLE NEW MILTON 7.5' DISTRICT GREENBRIER COUNTY DODD

SURFACE OWNER CLARENCE TRENT, JR. ET AL ACREAGE 155 ACRES +/-  
OIL & GAS ROYALTY OWNER ELIZABETH JONES & RICHARD JONES; ED BROOME INC.: LEASE ACREAGE 155 ACRES±; 48.75 ACRES±  
CORAS SCOTT ET AL; CLARENCE MUTSCHELKNAUS ET AL; RUSSELL M. COX ET AL; ROBERT CUMPSTON ET AL; MATHEW J. MUSGRAVE; VICTOR COX ET AL 28.1 ACRES±; 135.421 ACRES±; 16.824 ACRES±; 75 ACRES±; 18.72 ACRES±; 23.28 ACRES±  
PROPOSED WORK: DRILL  CONVERT  DRILL DEEPER  REDRILL  FRACTURE OR STIMULATE   
PLUG OFF OLD FORMATION  PERFORATE NEW FORMATION  OTHER PHYSICAL CHANGE IN WELL (SPECIFY) AS DRILLED PLUG & ABANDON CLEAN OUT & REPLUG  
TARGET FORMATION MARCELLUS ESTIMATED DEPTH 7,401' TVD 14,901' MD  
WELL OPERATOR ANTERO RESOURCES CORP. DESIGNATED AGENT DIANNA STAMPER  
ADDRESS 1615 WYNKOOP STREET ADDRESS 5400 D BIG TYLER ROAD  
DENVER, CO 80202 CHARLESTON, WV 25313

06/05/2015