

RECEIVED

JUN 26 2015

WV GEOLOGICAL SURVEY
MORGANTOWN, WV



Antero Resources
Gainer Unit 2H
Doddridge County WV
Northing: 14260741.82
Easting: 1751063.44
As Drilled

Genie Lightfoot
Scientific Drilling
421 South Eagle Lane
Oklahoma City, Oklahoma
405-787-3663

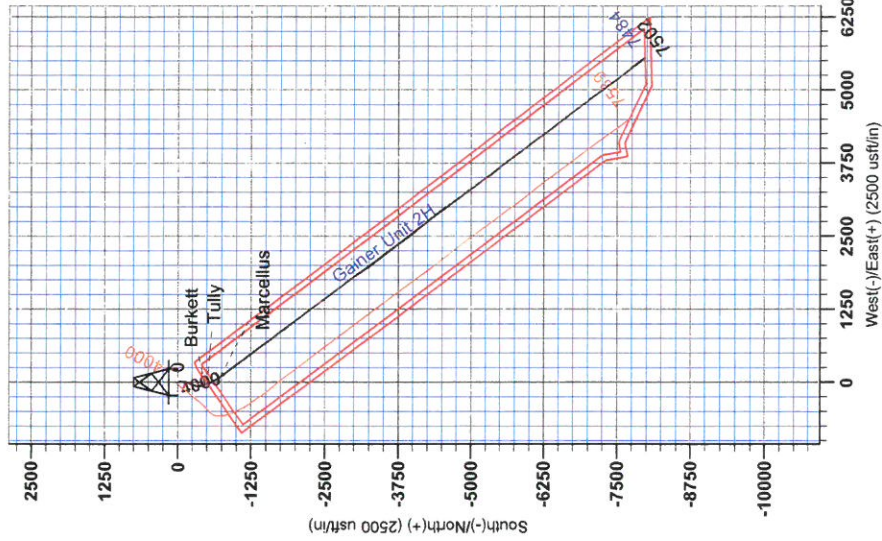
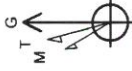


Scientific Drilling

REFERENCE INFORMATION
Coordinate (NED) Reference: Well Color U19.2H, Grid North
Vertical (VTD) Reference: Gainer Unit 2H 1364.0 ft, 25 KB @ 1388 Down
Measured Depth Reference: Gainer Unit 2H 1364.0 ft, 25 KB @ 1388 Down
Calculation Method: Minimum Curvature

WELL DETAILS: Gainer Unit 2H
+N-S +E-W Northing Easting Ground Level: 1364.0
0.0 14260741.82 1751063.44 39° 16' 14.564" N 80° 36' 32.554" W Slot

To convert Magnetic North to Grid, Subtract 8.81°
True North: -0.25°
Magnetic North: -8.81°
Magnetic Field
Strength: 48.85
Dip Angle: 66.85
Date: 04/2013
Model: IGRF2010

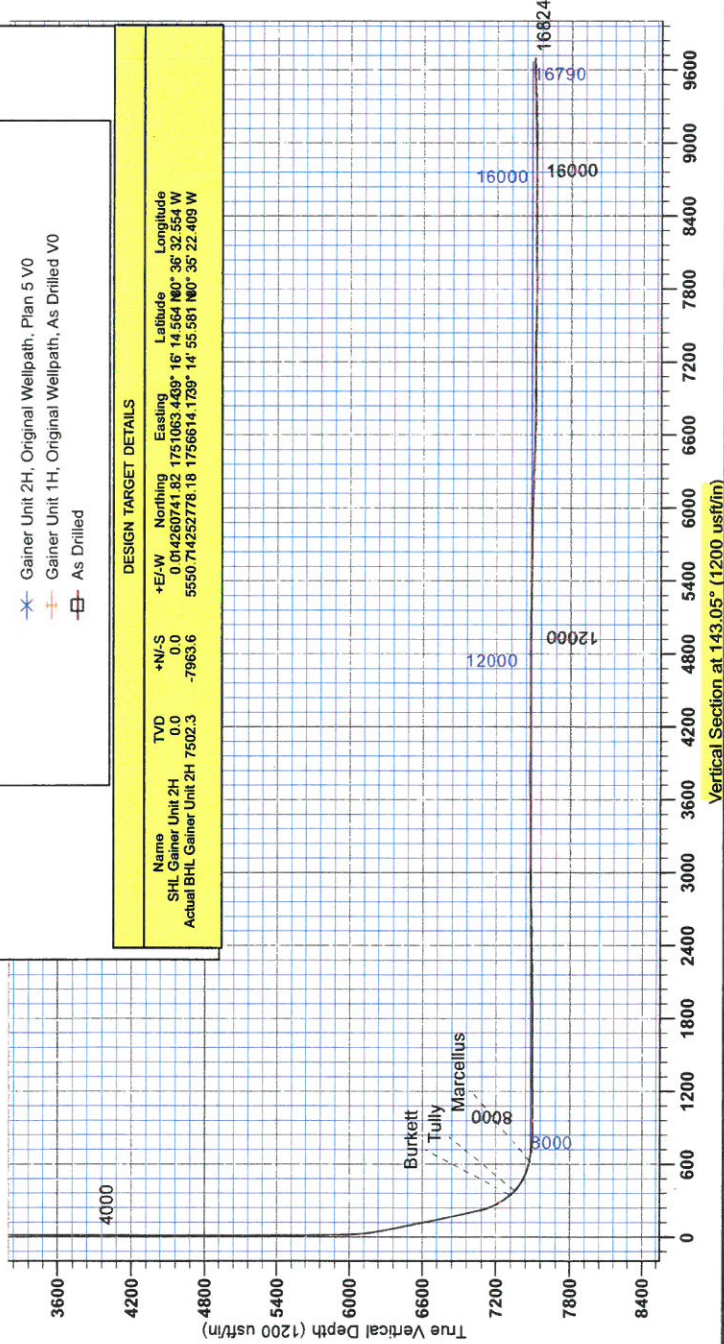


LEGEND

- Gainer Unit 2H, Original Wellpath, Plan 5 VO
- Gainer Unit 1H, Original Wellpath, As Drilled VO
- As Drilled

DESIGN TARGET DETAILS

Name	TVD	+N-S	+E-W	Northing	Easting	Latitude	Longitude
SHL Gainer Unit 2H	0.0	0.0	0.0	14260741.82	1751063.44	39° 16' 14.564" N	80° 36' 32.554" W
Actual BHL Gainer Unit 2H	7502.3	-7963.6	5550.7142527718	1756614.1738	14° 55' 58.1" N	80° 35' 22.409" W	



Vertical Section at 143.05° (1200 usf/in)



RECEIVED
JUN 26 2015
WV GEOLOGICAL SURVEY
MORGANTOWN, WV

Antero Resources

**Doddridge County WV
Gainer/Irons Pad
Gainer Unit 2H
Original Wellpath**

Design: As Drilled

EOW Completion Report

09 January, 2014



JUN 26 2015



EOW Completion Report



Company:	Antero Resources	Local Co-ordinate Reference:	Well Gainer Unit 2H
Project:	Doddridge County WV	TVD Reference:	Gainer Unit 2H 1364 GL + 25 KB @ 1389.0usft
Site:	Gainer/Irons Pad	MD Reference:	Gainer Unit 2H 1364 GL + 25 KB @ 1389.0usft
Well:	Gainer Unit 2H	North Reference:	Grid
Wellbore:	Original Wellpath	Survey Calculation Method:	Minimum Curvature
Design:	As Drilled	Database:	Oklahoma District

Project	Doddridge County WV, McClellan District		
Map System:	Universal Transverse Mercator (US Survey Feet)	System Datum:	Mean Sea Level
Geo Datum:	NAD 1927 (NADCON CONUS)		
Map Zone:	Zone 17N (84 W to 78 W)		

Site	Gainer/Irons Pad				
Site Position:		Northing:	14,260,748.87 usft	Latitude:	39° 16' 14.634 N
From:	Map	Easting:	1,751,056.36 usft	Longitude:	80° 36' 32.644 W
Position Uncertainty:	0.0 usft	Slot Radius:	13-3/16"	Grid Convergence:	0.25 °

Well	Gainer Unit 2H, Marcellus					
Well Position	+N/-S	0.0 usft	Northing:	14,260,741.82 usft	Latitude:	39° 16' 14.564 N
	+E/-W	0.0 usft	Easting:	1,751,063.44 usft	Longitude:	80° 36' 32.554 W
Position Uncertainty	2.0 usft		Wellhead Elevation:	1,389.0 usft	Ground Level:	1,364.0 usft

Wellbore	Original Wellpath				
Magnetics	Model Name	Sample Date	Declination (°)	Dip Angle (°)	Field Strength (nT)
	IGRF2010	9/4/2013	-8.56	66.85	52,358

Design	As Drilled				
Audit Notes:					
Version:	1.0	Phase:	ACTUAL	Tie On Depth:	0.0
Vertical Section:	Depth From (TVD) (usft)	+N/-S (usft)	+E/-W (usft)	Direction (°)	
	0.0	0.0	0.0	143.05	

Survey Program	Date 1/9/2014				
From (usft)	To (usft)	Survey (Wellbore)	Tool Name	Description	
97.0	7,068.0	Survey #5 Final Gyro (Original Wellpath)	SDI Standard Keeper	Scientific Drilling Intl. Standard Wireline Keeper	
7,102.0	16,824.0	Survey #6 MWD (Original Wellpath)	MWD SDI	MWD - Standard ver 1.0.1	

Survey	MD (usft)	Inc (°)	Azi (azimuth) (°)	TVD (usft)	N/S (usft)	E/W (usft)	V. Sec (usft)	DLeg (°/100usft)
	0.0	0.00	0.00	0.0	0.0	0.0	0.0	0.00
	97.0	0.64	138.48	97.0	-0.4	0.4	0.5	0.66
	197.0	0.56	167.35	197.0	-1.3	0.8	1.5	0.31
	297.0	0.28	210.35	297.0	-2.0	0.8	2.1	0.40
	397.0	0.25	186.79	397.0	-2.4	0.7	2.3	0.11
	497.0	0.23	194.33	497.0	-2.8	0.6	2.6	0.04
	597.0	0.31	206.99	597.0	-3.3	0.4	2.9	0.10
	697.0	0.30	208.69	697.0	-3.7	0.2	3.1	0.01
	797.0	0.24	178.29	797.0	-4.2	0.1	3.4	0.15
	897.0	0.23	178.39	897.0	-4.6	0.1	3.7	0.01
	997.0	0.25	191.04	997.0	-5.0	0.0	4.0	0.06

JUN 26 2015



EOW Completion Report



Company: Antero Resources
Project: Doddridge County WV
Site: Gainer/Irons Pad
Well: Gainer Unit 2H
Wellbore: Original Wellpath
Design: As Drilled

Local Co-ordinate Reference: Well Gainer Unit 2H
TVD Reference: Gainer Unit 2H 1364 GL + 25 KB @ 1389.0usft
MD Reference: Gainer Unit 2H 1364 GL + 25 KB @ 1389.0usft
North Reference: Grid
Survey Calculation Method: Minimum Curvature
Database: Oklahoma District

Survey

MD (usft)	Inc (°)	Azi (azimuth) (°)	TVD (usft)	N/S (usft)	E/W (usft)	V. Sec (usft)	DLeg (°/100usft)
1,097.0	0.19	197.26	1,097.0	-5.4	-0.1	4.3	0.06
1,197.0	0.23	193.24	1,197.0	-5.7	-0.2	4.5	0.04
1,297.0	0.15	170.61	1,297.0	-6.0	-0.2	4.7	0.11
1,397.0	0.21	198.51	1,397.0	-6.4	-0.2	4.9	0.10
1,497.0	0.26	195.27	1,497.0	-6.7	-0.3	5.2	0.05
1,597.0	0.33	175.58	1,597.0	-7.2	-0.4	5.6	0.12
1,697.0	0.40	182.43	1,697.0	-7.9	-0.4	6.1	0.08
1,797.0	0.35	157.26	1,797.0	-8.5	-0.3	6.6	0.17
1,897.0	0.35	153.57	1,897.0	-9.1	0.0	7.2	0.02
1,997.0	0.37	167.49	1,997.0	-9.7	0.2	7.8	0.09
2,097.0	0.47	168.41	2,097.0	-10.4	0.4	8.5	0.10
2,197.0	0.44	157.97	2,197.0	-11.1	0.6	9.2	0.09
2,297.0	0.40	144.78	2,297.0	-11.8	0.9	10.0	0.10
2,397.0	0.37	164.83	2,397.0	-12.4	1.2	10.6	0.14
2,497.0	0.40	119.58	2,497.0	-12.9	1.6	11.2	0.30
2,597.0	0.27	168.18	2,597.0	-13.3	1.9	11.8	0.30
2,697.0	0.37	220.97	2,697.0	-13.7	1.8	12.0	0.30
2,797.0	0.52	192.86	2,797.0	-14.4	1.5	12.4	0.26
2,897.0	0.38	146.40	2,896.9	-15.1	1.6	13.0	0.38
2,997.0	0.41	195.71	2,996.9	-15.8	1.6	13.6	0.33
3,097.0	0.23	154.86	3,096.9	-16.3	1.6	14.0	0.28
3,197.0	0.16	234.33	3,196.9	-16.5	1.6	14.2	0.26
3,297.0	0.35	245.29	3,296.9	-16.8	1.2	14.1	0.20
3,397.0	0.26	327.90	3,396.9	-16.7	0.8	13.8	0.41
3,497.0	0.10	291.56	3,496.9	-16.5	0.6	13.5	0.19
3,597.0	0.15	323.82	3,596.9	-16.3	0.5	13.3	0.08
3,697.0	0.26	267.47	3,696.9	-16.2	0.1	13.1	0.22
3,797.0	0.26	284.52	3,796.9	-16.2	-0.3	12.8	0.08
3,897.0	0.23	224.73	3,896.9	-16.3	-0.7	12.6	0.25
3,997.0	0.24	250.70	3,996.9	-16.5	-1.0	12.6	0.11
4,097.0	0.32	303.70	4,096.9	-16.4	-1.4	12.2	0.26
4,197.0	0.29	320.23	4,196.9	-16.1	-1.8	11.7	0.09
4,297.0	0.20	249.44	4,296.9	-15.9	-2.1	11.4	0.29
4,397.0	0.20	340.61	4,396.9	-15.8	-2.4	11.2	0.29
4,497.0	0.17	73.36	4,496.9	-15.6	-2.3	11.1	0.27
4,597.0	0.32	359.95	4,596.9	-15.3	-2.1	10.9	0.32
4,697.0	0.24	41.93	4,696.9	-14.8	-2.0	10.7	0.21
4,797.0	0.42	37.28	4,796.9	-14.4	-1.6	10.5	0.18
4,897.0	0.59	46.86	4,896.9	-13.8	-1.0	10.4	0.19
4,997.0	0.45	70.58	4,996.9	-13.3	-0.3	10.4	0.25
5,097.0	0.79	72.65	5,096.9	-12.9	0.7	10.8	0.34
5,197.0	0.62	82.90	5,196.9	-12.7	1.9	11.3	0.21
5,297.0	0.51	88.84	5,296.9	-12.6	2.9	11.8	0.12
5,397.0	0.45	75.43	5,396.9	-12.5	3.7	12.2	0.13



EOW Completion Report



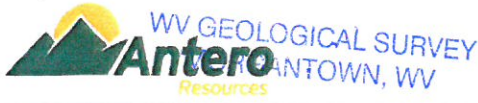
Company: Antero Resources
Project: Doddridge County WV
Site: Gainer/Irons Pad
Well: Gainer Unit 2H
Wellbore: Original Wellpath
Design: As Drilled

Local Co-ordinate Reference: Well Gainer Unit 2H
TVD Reference: Gainer Unit 2H 1364 GL + 25 KB @ 1389.0usft
MD Reference: Gainer Unit 2H 1364 GL + 25 KB @ 1389.0usft
North Reference: Grid
Survey Calculation Method: Minimum Curvature
Database: Oklahoma District

Survey

MD (usft)	Inc (°)	Azi (azimuth) (°)	TVD (usft)	N/S (usft)	E/W (usft)	V. Sec (usft)	DLeg (°/100usft)
5,497.0	0.51	77.58	5,496.9	-12.3	4.5	12.6	0.06
5,597.0	0.38	96.58	5,596.9	-12.2	5.3	13.0	0.19
5,697.0	0.50	108.78	5,696.9	-12.4	6.1	13.6	0.15
5,797.0	0.39	106.57	5,796.9	-12.6	6.8	14.2	0.11
5,897.0	0.65	87.70	5,896.9	-12.7	7.7	14.8	0.31
5,997.0	2.64	156.64	5,996.8	-14.8	9.2	17.3	2.48
6,097.0	5.86	170.29	6,096.6	-22.0	10.9	24.1	3.35
6,197.0	10.27	174.32	6,195.5	-35.9	12.7	36.3	4.44
6,297.0	14.15	181.19	6,293.3	-57.0	13.3	53.5	4.14
6,397.0	16.91	189.74	6,389.6	-83.5	10.6	73.1	3.58
6,497.0	18.77	191.88	6,484.8	-113.6	4.8	93.7	1.97
6,597.0	18.30	195.38	6,579.6	-144.5	-2.7	113.9	1.21
6,697.0	19.35	198.37	6,674.3	-175.4	-12.0	132.9	1.43
6,797.0	21.07	202.55	6,768.1	-207.7	-24.2	151.5	2.24
6,897.0	21.96	202.03	6,861.2	-241.6	-38.1	170.2	0.91
6,997.0	21.91	196.61	6,953.9	-276.8	-50.4	190.9	2.02
7,068.0	21.77	195.65	7,019.8	-302.2	-57.7	206.8	0.54
7,102.0	21.16	194.48	7,051.5	-314.2	-61.0	214.5	2.19
7,136.0	21.48	193.65	7,083.1	-326.2	-64.0	222.2	1.29
7,168.0	23.41	187.88	7,112.7	-338.2	-66.2	230.5	9.15
7,200.0	25.89	181.90	7,141.8	-351.5	-67.3	240.4	10.98
7,232.0	28.01	178.19	7,170.3	-366.0	-67.3	252.0	8.45
7,264.0	30.18	171.86	7,198.3	-381.5	-66.0	265.2	11.76
7,296.0	32.23	167.31	7,225.7	-397.8	-62.9	280.0	9.76
7,329.0	34.44	166.01	7,253.2	-415.4	-58.8	296.6	7.04
7,361.0	38.53	163.97	7,279.0	-433.8	-53.8	314.3	13.33
7,393.0	42.35	162.71	7,303.3	-453.6	-47.9	333.8	12.21
7,412.0	44.63	161.98	7,317.1	-466.1	-43.9	346.1	12.31
Burkett							
7,425.0	46.20	161.51	7,326.2	-474.9	-41.0	354.9	12.31
7,457.0	48.83	160.56	7,347.8	-497.2	-33.3	377.3	8.51
7,463.0	49.33	160.32	7,351.8	-501.5	-31.8	381.6	8.81
Tully							
7,489.0	51.49	159.34	7,368.3	-520.3	-24.9	400.8	8.81
7,521.0	55.46	156.87	7,387.4	-544.1	-15.3	425.7	13.87
7,553.0	58.62	155.42	7,404.8	-568.7	-4.4	451.8	10.58
7,586.0	61.79	154.17	7,421.2	-594.6	7.8	479.8	10.15
7,618.0	65.61	152.82	7,435.4	-620.3	20.6	508.0	12.52
7,650.0	68.62	151.26	7,447.8	-646.3	34.4	537.2	10.42
7,682.0	71.55	149.25	7,458.7	-672.4	49.3	567.0	10.90
7,714.0	74.92	146.89	7,467.9	-698.4	65.5	597.5	12.68
7,739.0	76.66	145.61	7,474.1	-718.5	79.0	621.7	8.54
Marcellus							
7,746.0	77.15	145.26	7,475.7	-724.2	82.9	628.5	8.54
7,778.0	79.54	144.75	7,482.1	-749.8	100.8	659.9	7.63

JUN 26 2015



EOW Completion Report



Company: Antero Resources
Project: Doddridge County WV
Site: Gainer/Irons Pad
Well: Gainer Unit 2H
Wellbore: Original Wellpath
Design: As Drilled

Local Co-ordinate Reference: Well Gainer Unit 2H
TVD Reference: Gainer Unit 2H 1364 GL + 25 KB @ 1389.0usft
MD Reference: Gainer Unit 2H 1364 GL + 25 KB @ 1389.0usft
North Reference: Grid
Survey Calculation Method: Minimum Curvature
Database: Oklahoma District

Survey

MD (usft)	Inc (°)	Azi (azimuth) (°)	TVD (usft)	N/S (usft)	E/W (usft)	V. Sec (usft)	DLeg (°/100usft)
7,810.0	84.02	143.80	7,486.7	-775.5	119.3	691.5	14.30
7,880.0	86.84	143.44	7,492.3	-831.7	160.7	761.3	4.06
7,976.0	87.95	140.83	7,496.6	-907.4	219.6	857.2	2.95
8,073.0	90.71	141.69	7,497.8	-983.1	280.3	954.1	2.98
8,169.0	90.10	142.13	7,497.1	-1,058.6	339.5	1,050.1	0.78
8,265.0	90.40	143.17	7,496.7	-1,134.9	397.7	1,146.1	1.13
8,362.0	90.34	143.86	7,496.0	-1,212.9	455.4	1,243.1	0.71
8,458.0	90.84	143.39	7,495.1	-1,290.2	512.3	1,339.0	0.71
8,554.0	90.07	143.34	7,494.3	-1,367.2	569.6	1,435.0	0.80
8,650.0	89.70	141.35	7,494.5	-1,443.2	628.3	1,531.0	2.11
8,747.0	90.30	143.88	7,494.5	-1,520.3	687.1	1,628.0	2.68
8,843.0	89.03	140.79	7,495.0	-1,596.3	745.8	1,724.0	3.48
8,940.0	90.13	142.61	7,495.8	-1,672.4	805.9	1,821.0	2.19
9,036.0	91.01	145.62	7,494.8	-1,750.2	862.2	1,916.9	3.27
9,133.0	91.55	143.84	7,492.6	-1,829.3	918.2	2,013.9	1.92
9,229.0	89.90	140.90	7,491.4	-1,905.3	976.8	2,109.8	3.51
9,325.0	90.84	141.59	7,490.8	-1,980.2	1,036.9	2,205.8	1.21
9,422.0	90.94	141.30	7,489.3	-2,056.1	1,097.3	2,302.7	0.32
9,518.0	90.91	141.72	7,487.7	-2,131.2	1,157.1	2,398.7	0.44
9,614.0	90.81	141.68	7,486.3	-2,206.5	1,216.5	2,494.6	0.11
9,711.0	91.34	144.94	7,484.5	-2,284.3	1,274.5	2,591.6	3.40
9,801.0	91.44	145.47	7,482.3	-2,358.2	1,325.8	2,681.5	0.60
9,891.0	90.91	143.92	7,480.5	-2,431.6	1,377.8	2,771.5	1.82
9,982.0	90.94	142.85	7,479.0	-2,504.6	1,432.1	2,862.4	1.18
10,073.0	90.50	143.05	7,477.8	-2,577.2	1,486.9	2,953.4	0.53
10,163.0	89.63	142.57	7,477.7	-2,648.9	1,541.3	3,043.4	1.10
10,254.0	90.60	141.47	7,477.6	-2,720.7	1,597.3	3,134.4	1.61
10,344.0	90.77	143.73	7,476.5	-2,792.1	1,652.0	3,224.4	2.52
10,435.0	90.17	143.25	7,475.7	-2,865.3	1,706.1	3,315.4	0.84
10,526.0	90.17	142.62	7,475.5	-2,937.9	1,761.0	3,406.4	0.69
10,616.0	90.27	145.09	7,475.1	-3,010.6	1,814.0	3,496.4	2.75
10,707.0	90.60	147.54	7,474.4	-3,086.3	1,864.5	3,587.2	2.72
10,798.0	90.71	144.63	7,473.4	-3,161.8	1,915.3	3,678.1	3.20
10,895.0	89.53	143.03	7,473.2	-3,240.1	1,972.5	3,775.1	2.05
10,990.0	89.43	142.99	7,474.0	-3,316.0	2,029.7	3,870.1	0.11
11,086.0	88.99	140.86	7,475.4	-3,391.5	2,088.9	3,966.0	2.27
11,183.0	89.90	143.35	7,476.3	-3,468.1	2,148.4	4,063.0	2.73
11,279.0	89.87	141.91	7,476.5	-3,544.4	2,206.7	4,159.0	1.50
11,375.0	89.53	141.53	7,477.0	-3,619.7	2,266.2	4,255.0	0.53
11,472.0	89.93	143.93	7,477.5	-3,696.9	2,324.9	4,352.0	2.51
11,568.0	89.97	146.14	7,477.5	-3,775.6	2,379.9	4,447.9	2.30
11,665.0	90.91	143.53	7,476.8	-3,854.9	2,435.8	4,544.8	2.86
11,761.0	90.67	143.21	7,475.5	-3,931.9	2,493.1	4,640.8	0.42
11,857.0	88.86	140.78	7,475.9	-4,007.5	2,552.2	4,736.8	3.16

JUN 26 2015



EOW Completion Report



Company: Antero Resources
Project: Doddridge County WV
Site: Gainer/Irons Pad
Well: Gainer Unit 2H
Wellbore: Original Wellpath
Design: As Drilled

Local Co-ordinate Reference: Well Gainer Unit 2H
TVD Reference: Gainer Unit 2H 1364 GL + 25 KB @ 1389.0usft
MD Reference: Gainer Unit 2H 1364 GL + 25 KB @ 1389.0usft
North Reference: Grid
Survey Calculation Method: Minimum Curvature
Database: Oklahoma District

Survey

MD (usft)	Inc (°)	Azi (azimuth) (°)	TVD (usft)	N/S (usft)	E/W (usft)	V. Sec (usft)	DLeg (°/100usft)
11,952.0	88.86	140.96	7,477.8	-4,081.2	2,612.1	4,831.7	0.19
12,048.0	89.03	139.81	7,479.5	-4,155.1	2,673.3	4,927.6	1.21
12,144.0	89.56	140.29	7,480.7	-4,228.7	2,734.9	5,023.4	0.74
12,240.0	89.26	140.69	7,481.7	-4,302.8	2,796.0	5,119.3	0.52
12,337.0	90.13	141.87	7,482.2	-4,378.5	2,856.7	5,216.3	1.51
12,433.0	90.47	144.17	7,481.7	-4,455.1	2,914.4	5,312.3	2.42
12,530.0	89.16	145.55	7,482.0	-4,534.5	2,970.2	5,409.2	1.96
12,626.0	89.76	145.23	7,482.9	-4,613.5	3,024.8	5,505.2	0.71
12,723.0	89.06	144.26	7,483.9	-4,692.7	3,080.8	5,602.1	1.23
12,819.0	89.16	143.01	7,485.4	-4,770.0	3,137.7	5,698.1	1.31
12,916.0	88.69	143.04	7,487.2	-4,847.4	3,196.0	5,795.1	0.49
13,012.0	88.96	142.96	7,489.2	-4,924.1	3,253.8	5,891.0	0.29
13,108.0	88.86	143.74	7,491.0	-5,001.1	3,311.1	5,987.0	0.82
13,205.0	87.85	144.25	7,493.8	-5,079.5	3,368.1	6,084.0	1.17
13,301.0	87.92	143.92	7,497.4	-5,157.2	3,424.3	6,179.9	0.35
13,398.0	89.26	145.22	7,499.8	-5,236.3	3,480.5	6,276.8	1.92
13,494.0	87.78	145.24	7,502.2	-5,315.1	3,535.3	6,372.7	1.54
13,591.0	87.55	142.22	7,506.2	-5,393.2	3,592.6	6,469.6	3.12
13,687.0	88.39	141.33	7,509.6	-5,468.6	3,652.0	6,565.5	1.27
13,784.0	88.25	141.42	7,512.4	-5,544.3	3,712.5	6,662.4	0.17
13,880.0	89.43	142.30	7,514.4	-5,619.8	3,771.8	6,758.4	1.53
13,976.0	90.03	143.22	7,514.8	-5,696.2	3,829.9	6,854.4	1.14
14,073.0	89.66	142.02	7,515.1	-5,773.3	3,888.7	6,951.4	1.29
14,169.0	89.60	142.28	7,515.7	-5,849.1	3,947.6	7,047.4	0.28
14,266.0	90.34	144.50	7,515.8	-5,927.0	4,005.5	7,144.4	2.41
14,362.0	90.24	145.10	7,515.3	-6,005.4	4,060.8	7,240.3	0.63
14,458.0	89.87	145.33	7,515.2	-6,084.3	4,115.6	7,336.3	0.45
14,555.0	88.45	142.33	7,516.6	-6,162.6	4,172.8	7,433.2	3.42
14,651.0	88.81	142.01	7,518.9	-6,238.4	4,231.7	7,529.2	0.50
14,748.0	89.56	142.13	7,520.3	-6,314.9	4,291.3	7,626.2	0.78
14,855.0	88.90	140.69	7,521.7	-6,398.5	4,358.0	7,733.1	1.48
14,941.0	90.27	142.90	7,522.3	-6,466.1	4,411.2	7,819.1	3.02
15,037.0	90.50	142.58	7,521.7	-6,542.5	4,469.3	7,915.1	0.41
15,134.0	89.87	140.94	7,521.4	-6,618.6	4,529.4	8,012.0	1.81
15,230.0	90.74	142.80	7,520.9	-6,694.1	4,588.6	8,108.0	2.14
15,327.0	90.77	142.48	7,519.6	-6,771.2	4,647.5	8,205.0	0.33
15,423.0	91.28	142.43	7,517.9	-6,847.3	4,706.0	8,301.0	0.53
15,519.0	90.30	143.57	7,516.5	-6,924.0	4,763.8	8,397.0	1.57
15,615.0	88.32	141.32	7,517.7	-7,000.1	4,822.3	8,492.9	3.12
15,711.0	89.60	143.57	7,519.4	-7,076.2	4,880.8	8,588.9	2.70
15,808.0	89.43	143.09	7,520.3	-7,154.0	4,938.7	8,685.9	0.52
15,904.0	89.56	142.47	7,521.1	-7,230.4	4,996.8	8,781.9	0.66
16,001.0	91.31	144.91	7,520.4	-7,308.6	5,054.2	8,878.9	3.10
16,097.0	90.34	147.22	7,519.0	-7,388.2	5,107.8	8,974.7	2.61

JUN 26 2015



EOW Completion Report



Company: Antero Resources
Project: Doddridge County WV
Site: Gainer/Irons Pad
Well: Gainer Unit 2H
Wellbore: Original Wellpath
Design: As Drilled

Local Co-ordinate Reference: Well Gainer Unit 2H
TVD Reference: Gainer Unit 2H 1364 GL + 25 KB @ 1389.0usft
MD Reference: Gainer Unit 2H 1364 GL + 25 KB @ 1389.0usft
North Reference: Grid
Survey Calculation Method: Minimum Curvature
Database: Oklahoma District

Survey

MD (usft)	Inc (°)	Azi (azimuth) (°)	TVD (usft)	N/S (usft)	E/W (usft)	V. Sec (usft)	DLeg (°/100usft)
16,193.0	90.24	144.49	7,518.5	-7,467.7	5,161.6	9,070.6	2.85
16,290.0	91.18	141.84	7,517.3	-7,545.3	5,219.8	9,167.6	2.90
16,386.0	91.41	138.12	7,515.1	-7,618.8	5,281.5	9,263.4	3.88
16,483.0	91.58	139.39	7,512.6	-7,691.7	5,345.4	9,360.1	1.32
16,579.0	92.25	144.35	7,509.4	-7,767.1	5,404.6	9,456.0	5.21
16,675.0	91.98	143.94	7,505.9	-7,844.9	5,460.8	9,551.9	0.51
16,769.0	91.08	142.39	7,503.3	-7,920.1	5,517.2	9,645.9	1.91
16,824.0	91.08	142.39	7,502.3	-7,963.6	5,550.7	9,700.9	0.00

Design Annotations

Measured Depth (usft)	Vertical Depth (usft)	Local Coordinates		Comment
		+N/-S (usft)	+E/-W (usft)	
7,412.0	7,317.1	-466.1	-43.9	Burkett
7,463.0	7,351.8	-501.5	-31.8	Tully
7,739.0	7,474.1	-718.5	79.0	Marcellus

Checked By: _____ Approved By: _____ Date: _____