



west virginia department of environmental protection

Office of Oil and Gas
601 57th Street SE
Charleston, WV 25304
(304) 926-0450
(304) 926-0452 fax

Earl Ray Tomblin, Governor
Randy C. Huffman, Cabinet Secretary
www.dep.wv.gov

PERMIT MODIFICATION APPROVAL

January 16, 2014

ANTERO RESOURCES APPALACHIAN CORPORATION
1625 17TH STREET, SUITE 300
DENVER, CO 80202

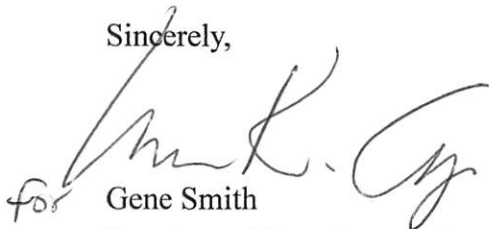
Re: Permit Modification Approval for API Number 1706238 , Well #: CROSS UNIT 1H
Changed lateral

Oil and Gas Operator:

The Office of Oil and Gas has reviewed the attached permit modification for the above referenced permit. The attached modification has been approved and well work may begin. Please be reminded that the oil and gas inspector is to be notified twenty-four (24) hours before permitted well work is commenced.

Please call James Martin at 304-926-0499, extension 1654 if you have any questions.

Sincerely,


for Gene Smith
Regulatory/Compliance Manager
Office of Oil and Gas

Promoting a healthy environment.



Antero Resources
1625 17th Street
Denver, Colorado 80202
Office 303.357.7310
Fax 303.357.7315

November 1, 2013

West Virginia Department of Environmental Protection
Office of Oil and Gas
Attn: Ms. Laura Cooper
601 57th Street
Charleston, WV 25304

Ms. Laura Cooper:

Antero Resources Corporation (Antero) would like to submit the following permit modifications for approved wells on the Stewart Pad. We are requesting to modify the horizontal lateral orientations which will change the bottom hole locations of the Dorothy Unit 2H (API# 47-017-06244), Cross Unit 1H (API# 47-017-06238) and Cross Unit 2H (API# 47-017-06240).

Attached you will find the following documents:

- REVISED Form WW-6B, which shows the revised MD and Production Casing/Cement program
- REVISED Form WW-6A1, which shows the leases we will be drilling into
- REVISED Mylar Plat, which shows the new bottom hole location

If you have any questions please feel free to contact me at (303) 357-7323.

Thank you in advance for your consideration.

Sincerely,



Ashlie Mihalcin
Permit Representative
Antero Resources Corporation

Enclosures

WW-6B
(9/13)

STATE OF WEST VIRGINIA
DEPARTMENT OF ENVIRONMENTAL PROTECTION, OFFICE OF OIL AND GAS
WELL WORK PERMIT APPLICATION

1) Well Operator: Antero Resources Corporation 494488557 017- Doddridge New Milton New Milton
Operator ID County District Quadrangle

2) Operator's Well Number: Cross Unit 1H Well Pad Name: Stewart Pad

3) Farm Name/Surface Owner: Randall Stewart Public Road Access: CR 56

4) Elevation, current ground: ~1360' Elevation, proposed post-construction: 1332'

5) Well Type (a) Gas Oil Underground Storage

Other

(b) If Gas Shallow Deep

Horizontal

6) Existing Pad: Yes or No Yes

7) Proposed Target Formation(s), Depth(s), Anticipated Thickness and Associated Pressure(s):

Marcellus Shale: 7500' TVD, Anticipated Thickness-60 Feet, Associated Pressure- 3250#

8) Proposed Total Vertical Depth: 7500' TVD

9) Formation at Total Vertical Depth: Marcellus Shale

10) Proposed Total Measured Depth: 15,600' MD

11) Proposed Horizontal Leg Length: 7495"

12) Approximate Fresh Water Strata Depths: 317', 362'

13) Method to Determine Fresh Water Depths: Offset well records. Depths have been adjusted according to surface elevations.

14) Approximate Saltwater Depths: 2,345'

15) Approximate Coal Seam Depths: 825', 945', 1167', 1776'

16) Approximate Depth to Possible Void (coal mine, karst, other): None anticipated

17) Does Proposed well location contain coal seams directly overlying or adjacent to an active mine? Yes No

(a) If Yes, provide Mine Info: Name: _____

Depth: _____

Seam: _____

Owner: _____

RECEIVED
Office of Oil and Gas
NOV 07 2013
WV Department of
Environmental Protection

WW-6B
(9/13)

18) **CASING AND TUBING PROGRAM**

TYPE	Size	New or Used	Grade	Weight per ft. (lb/ft)	FOOTAGE: For Drilling	INTERVALS: Left in Well	CEMENT: Fill-up (Cu. Ft.)
Conductor	20"	New	H-40	94#	40'	40'	CTS, 38 Cu. Ft.
Fresh Water	13-3/8"	New	J-55/H-40	54.5#/ 48#	425'	425' *see #19	CTS, 590 Cu. Ft.
Coal	9-5/8"	New	J-55	36#	2550'	2550'	CTS, 1038 Cu. Ft.
Intermediate							
Production	5-1/2"	New	P-110	20#	15600'	15600'	3862 Cu. Ft.
Tubing	2-3/8"	New	N-80	4.7#		7000'	
Liners							

TYPE	Size	Wellbore Diameter	Wall Thickness	Burst Pressure	Cement Type	Cement Yield (cu. ft./k)
Conductor	20"	24"	0.438"	1530	Class A	1.18
Fresh Water	13-3/8"	17-1/2"	0.38"/0.33"	2730/1730	Class A	1.18
Coal	9-5/8"	12-1/4"	0.352"	3520	Class A	1.18
Intermediate						
Production	5-1/2"	8-3/4" & 8-1/2"	0.361"	12630	Lead-H/POZ & Tail - H	H/POZ-1.44 & H-1.8
Tubing	2-3/8"	4.778"	0.19"	11200		
Liners						

PACKERS

Kind:	N/A			
Sizes:	N/A			
Depths Set:	N/A			

RECEIVED
Office of Oil and Gas
NOV 07 2013
WV Department of
Environmental Protection

WW-6B
(9/13)

19) Describe proposed well work, including the drilling and plugging back of any pilot hole:

Drill, perforate, fracture a new horizontal shallow well and complete Marcellus Shale.

*Antero will be air drilling the fresh water string which makes it difficult to determine when freshwater is encountered, therefore we have built in a buffer for the casing setting depth which helps to ensure that all fresh water zones are covered.

20) Describe fracturing/stimulating methods in detail, including anticipated max pressure and max rate:

Antero plans to pump Slickwater into the Marcellus Shale formation in order to ready the well for production. The fluid will be comprised of approximately 99 percent water and sand, with less than 1 percent special-purpose additives as shown in the attached "List of Anticipated Additives Used for Fracturing or Stimulating Well."

21) Total Area to be disturbed, including roads, stockpile area, pits, etc., (acres): 23.32 acres

22) Area to be disturbed for well pad only, less access road (acres): 4.22 acres

23) Describe centralizer placement for each casing string:

Conductor: no centralizers

Surface Casing: one centralizer 10' above the float shoe, one on the insert float collar and one every 4th joint spaced up the hole to surface.

Intermediate Casing: one centralizer above float joint, one centralizer 5' above float collar and one every 4th collar to surface.

Production Casing: one centralizer at shoe joint and one every 3 joints to top of cement in intermediate casing.

24) Describe all cement additives associated with each cement type:

Conductor: no additives, Class A cement.

Surface: Class A cement with 2% calcium and 1/4 lb flake, 5 gallons of clay treat

Intermediate: Class A cement with 1/4 lb of flake, 5 gallons of clay treat

Production: Lead cement- 50/50 Class H/Poz + 1.5% salt + 1% C-45 + 0.5% C-16a + 0.2% C-12 + 0.45% C-20 + 0.05% C-51

Production: Tail cement- Class H + 45 PPS Calcium Carbonate + 1.0% FL-160 + 0.2% ACGB-47 + 0.05% ACSA-51 + 0.2% ACR-20

25) Proposed borehole conditioning procedures:

Conductor: blowhole clean with air, run casing, 10 bbls fresh water.

Surface: blowhole clean with air, trip to conductor shoe, trip to bottom, blowhole clean with air, trip out, run casing, circulate pipe capacity + 40 bbls fresh water followed by 25 bbls bentonite mud, 10 bbls fresh water spacer.

Intermediate: blowhole clean with air, trip to surface casing shoe, trip to bottom, blowhole clean with air, trip out, run casing, circulate 40 bbls brine water followed by 10 bbls fresh water and 25 bbls bentonite mud, pump 10 bbls fresh water.

Production: circulate with 14 lb/gal NaCl mud, trip to middle of lateral, circulate, pump high viscosity sweep, trip to base of curve, pump high viscosity sweep, trip to top of curve, trip to bottom, circulate, pump high viscosity sweep, trip out, run casing, circulate 10 bbls fresh water, pump 48 bbls barite pill, pump 10 bbls fresh water followed by 48 bbls mud flush and 10 bbls water.

*Note: Attach additional sheets as needed.

RECEIVED
Office of Oil and Gas
NOV 6 2013
Environmental Protection

LATITUDE 39°12'30"

10,323'

1,170' TO BOTTOM HOLE

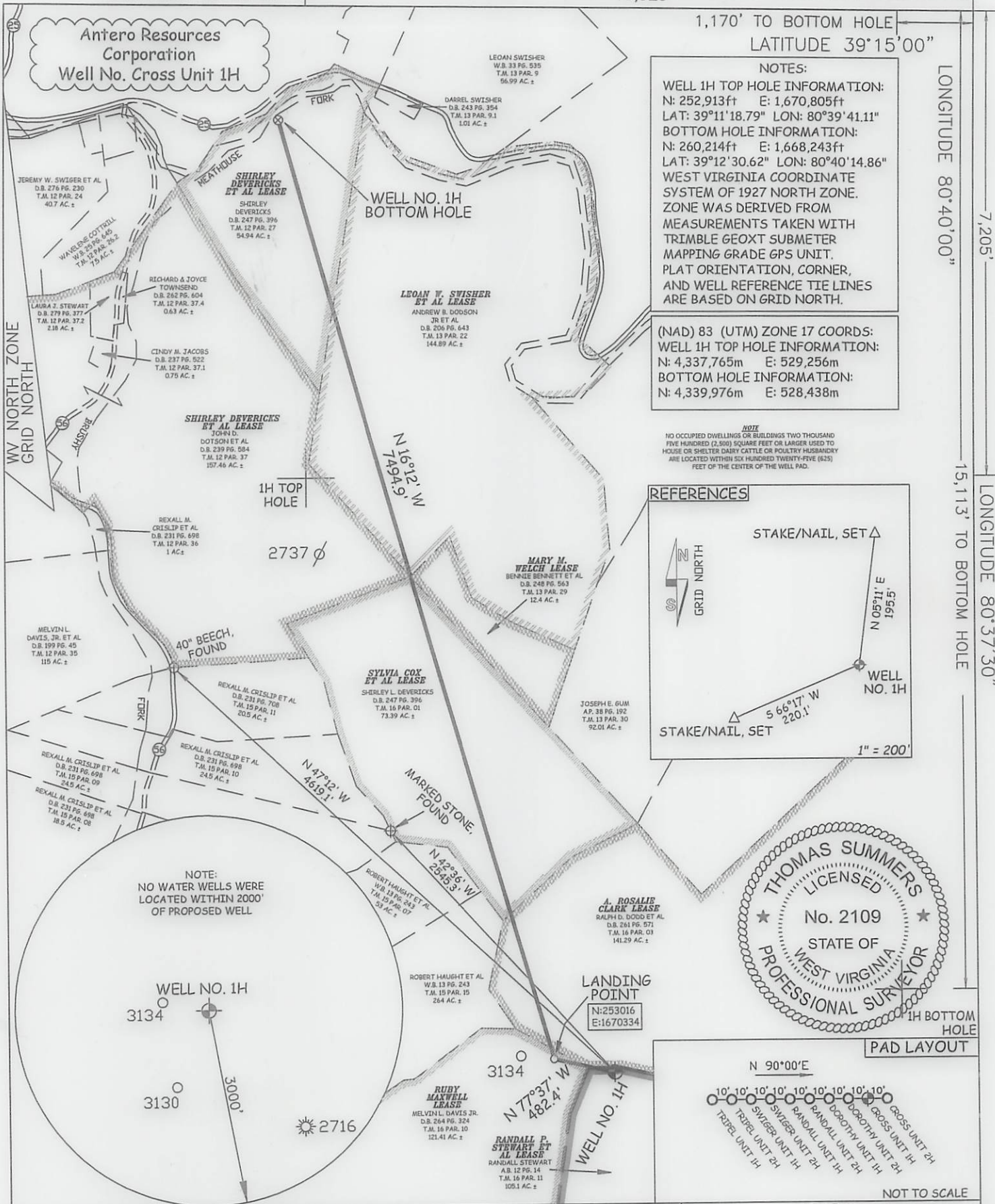
LATITUDE 39°15'00"

LONGITUDE 80°40'00"

7,205'

15,113' TO BOTTOM HOLE

LONGITUDE 80°37'30"



JOB # 12-118WA
 DRAWING # CROSS1HR3
 SCALE 1" = 1000'
 MINIMUM DEGREE OF ACCURACY SUBMETER
 PROVEN SOURCE OF ELEV. SUBMETER MAPPING GRADE GPS

I THE UNDERSIGNED, HEREBY CERTIFY THAT THIS PLAT IS CORRECT TO THE BEST OF MY KNOWLEDGE AND BELIEF AND SHOWS ALL THE INFORMATION REQUIRED BY LAW AND THE RULES ISSUED AND PERSCRIBED BY THE DEPARTMENT OF ENVIRONMENTAL PROTECTION.



STATE OF WEST VIRGINIA, DIVISION OF ENVIRONMENTAL PROTECTION, OFFICE OF OIL AND GAS
 WILLOW LAND SURVEYING PLLC
 266 HUSHERS RUN RD PENNSBORO WEST VIRGINIA 26415

LEGEND
 - - - - - Surface Owner Boundary Lines +/-
 - - - - - Interior Surface Tracts +/-
 - x - x - Existing Fence
 ⊕ Found monument, as noted

THOMAS SUMMERS P.S. 2109

DATE 10/03/13
 OPERATOR'S WELL# CROSS UNIT #1H
 API WELL # 47 - 017 - MOD 06238H6A
 STATE COUNTY PERMIT

STATE OF WEST VIRGINIA DEPARTMENT OF ENERGY DIVISION OF OIL AND GAS
 WELL TYPE: OIL GAS LIQUID INJECTION WASTE DISPOSAL
 (IF "GAS") PRODUCTION STORAGE DEEP SHALLOW
 LOCATION: ELEVATION 1,332' WATERSHED INDIAN FORK
 QUADRANGLE NEW MILTON 7.5' DISTRICT NEW MILTON COUNTY DODDRIDGE
 SURFACE OWNER RANDALL STEWART ACREAGE 105.1 ACRES +/-
 OIL & GAS ROYALTY OWNER RANDALL P. STEWART ET AL; A. ROSALIE CLARK; RUBY MAXWELL; LEASE ACREAGE 195 ACRES±; 141.46 ACRES±; 121 ACRES±;
 SYLVIA COX ET AL; SHIRLEY DEVERICKS ET AL; MARY M. WELCH; LEOAN W. SWISHER ET AL; SHIRLEY DEVERICKS ET AL 73 ACRES±; 157 ACRES±; 12.4 ACRES±; 178.14 ACRES±; 57.475 ACRES±
 PROPOSED WORK: DRILL CONVERT DRILL DEEPER REDRILL FRACTURE OR STIMULATE
 PLUG OFF OLD FORMATION PERFORATE NEW FORMATION OTHER PHYSICAL CHANGE IN WELL
 (SPECIFY) BHL-Modification PLUG & ABANDON CLEAN OUT & REPLUG
 TARGET FORMATION MARCELLUS ESTIMATED DEPTH 7,500' TVD 15,600' MD
 WELL OPERATOR ANTERO RESOURCES CORP. DESIGNATED AGENT DIANNA STAMPER
 ADDRESS 1625 17TH STREET ADDRESS 5400 D BIG TYLER ROAD
 DENVER, CO 80202 CHARLESTON, WV 25313

COUNTY NAME PERMIT