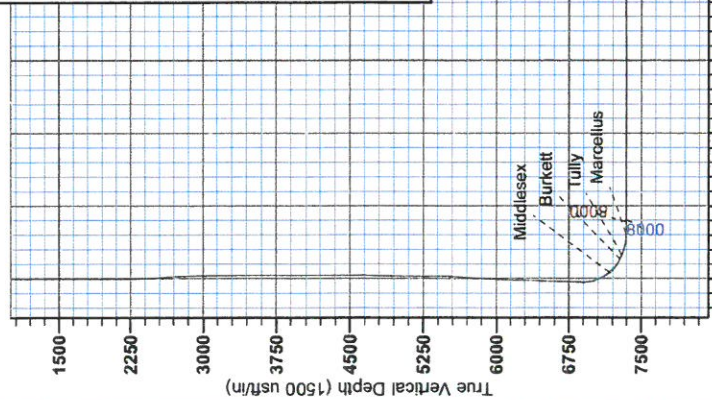


AUG 03 2015

WV GEOLOGICAL SURVEY  
MORGANTOWN, WV



Antero Resources  
Dorothy Unit 2H  
Doddridge County WV  
Northing: 14230768.79  
Easting: 1736341.61  
As Drilled



WELL DETAILS: Dorothy Unit 2H

+N/S	+E/W	Northing	Eastng	Longitude	Lat
0.0	0.0	14230768.79	1736341.61	80° 39' 41.240 W	

REFERENCE INFORMATION

Co-ordinate (NE) Reference: Well Dorothy Unit 2H, Grid North  
Vertical (TVD) Reference: 1332 GL + 22.5 RKB @ 1354 Swat  
Section (VS) Reference: Bot - (0.04, 0.06)  
Measured Depth Reference: 1332 GL + 22.5 RKB @ 1354 Swat  
Calculation Method: Minimum Curvature

PROJECT DETAILS: Doddridge County WV  
Geoside System: Universal Transverse Mercator (US Survey Feet)  
Datum: NAD 1983 (NAD83 CONUS)  
Ellipsoid: Clarke 1866  
System Datum: Mean Sea Level

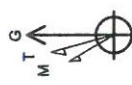
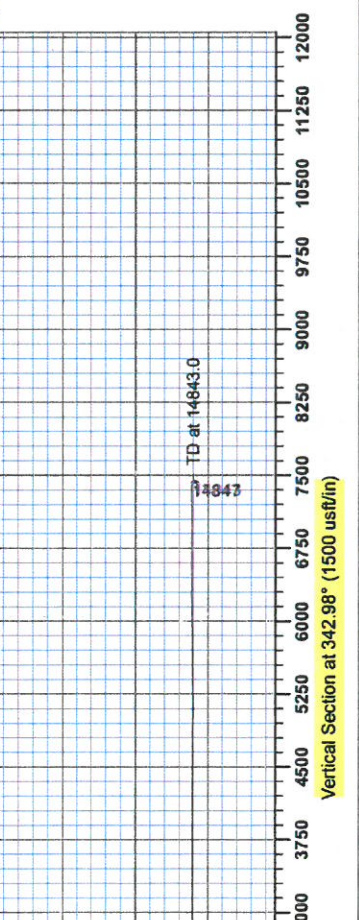
Genie Lightfoot  
9:31, February 28 2014  
Scientific Drilling  
421 South Eagle Lane  
Oklahoma City, OK

LEGEND

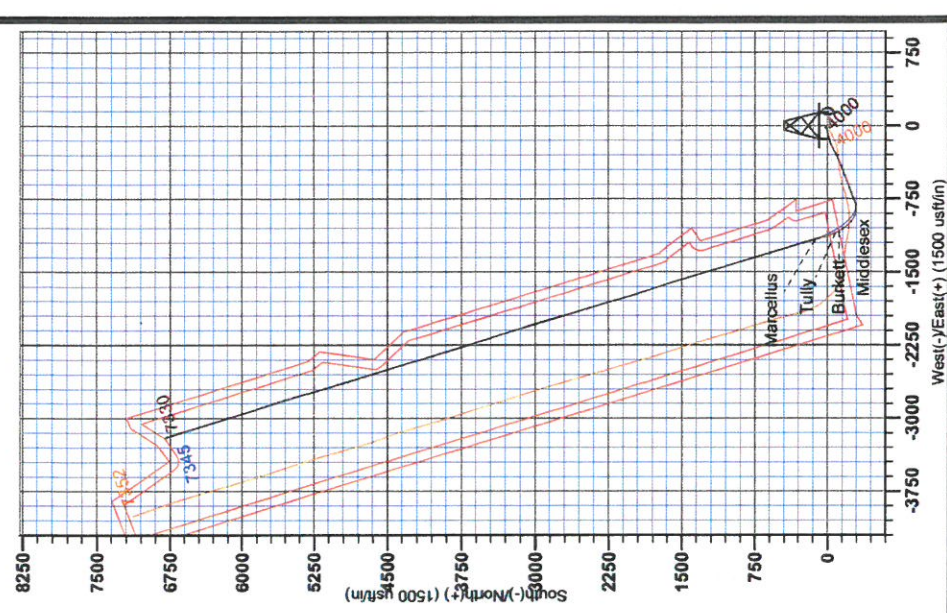
- Dorothy Unit 1H, Original Wellpath, As Drilled V0
- Dorothy Unit 2H, Original Wellpath, Plan 5 Rev V0
- As Drilled

DESIGN TARGET DETAILS

Name	+N/S	+E/W	TVD	Northing	Eastng	Latitude	Longitude
SHL Dorothy Unit 2H	0.0	0.0	0.0	0.01423076879	1736341.61	11° 18' 789.880	39° 41' 240 W
Actual BHL Dorothy Unit 2H	6786.6	-3186.6	14843.0	14230768.79	1736341.61	12° 28' 128.880	40° 21' 543 W



Azimuth to Grid North  
True North: -0.21°  
Magnetic North: -8.72°  
Magnetic Field Strength: 48.278  
Dip Angle: 86.78°  
Date: 10/02/2013  
Model: IGRF2010





**RECEIVED**  
AUG 03 2015  
WV GEOLOGICAL SURVEY  
MORGANTOWN, WV

## **Antero Resources**

**Doddridge County WV  
Stewart Pad  
Dorothy Unit 2H  
Original Wellpath**

**Design: As Drilled**

## **EOW Completion Report**

**28 February, 2014**



RECEIVED

AUG 03 2015



EOW Completion Report



<b>Company:</b> Antero Resources	<b>Local Co-ordinate Reference:</b> Well Dorothy Unit 2H
<b>Project:</b> Doddridge County WV	<b>TVD Reference:</b> 1332' GL + 22.5 RKB @ 1354.5usft
<b>Site:</b> Stewart Pad	<b>MD Reference:</b> 1332' GL + 22.5 RKB @ 1354.5usft
<b>Well:</b> Dorothy Unit 2H	<b>North Reference:</b> Grid
<b>Wellbore:</b> Original Wellpath	<b>Survey Calculation Method:</b> Minimum Curvature
<b>Design:</b> As Drilled	<b>Database:</b> Oklahoma District

<b>Project</b>	Doddridge County WV, McClellan District		
<b>Map System:</b>	Universal Transverse Mercator (US Survey Feet)	<b>System Datum:</b>	Mean Sea Level
<b>Geo Datum:</b>	NAD 1927 (NADCON CONUS)		
<b>Map Zone:</b>	Zone 17N (84 W to 78 W)		

<b>Site</b>	Stewart Pad				
<b>Site Position:</b>		<b>Northing:</b>	14,230,768.62 usft	<b>Latitude:</b>	39° 11' 18.788 N
<b>From:</b>	Map	<b>Easting:</b>	1,736,331.61 usft	<b>Longitude:</b>	80° 39' 41.367 W
<b>Position Uncertainty:</b>	0.0 usft	<b>Slot Radius:</b>	13-3/16"	<b>Grid Convergence:</b>	0.21 °

<b>Well</b>	Dorothy Unit 2H, Marcellus					
<b>Well Position</b>	<b>+N/-S</b>	0.0 usft	<b>Northing:</b>	14,230,768.79 usft	<b>Latitude:</b>	39° 11' 18.789 N
	<b>+E/-W</b>	0.0 usft	<b>Easting:</b>	1,736,341.61 usft	<b>Longitude:</b>	80° 39' 41.240 W
<b>Position Uncertainty</b>		2.0 usft	<b>Wellhead Elevation:</b>	1,345.0 usft	<b>Ground Level:</b>	1,332.0 usft

<b>Wellbore</b>	Original Wellpath				
<b>Magnetics</b>	<b>Model Name</b>	<b>Sample Date</b>	<b>Declination (°)</b>	<b>Dip Angle (°)</b>	<b>Field Strength (nT)</b>
	IGRF2010	10/6/2013	-8.51	66.78	52,312

<b>Design</b>	As Drilled				
<b>Audit Notes:</b>					
<b>Version:</b>	1.0	<b>Phase:</b>	ACTUAL	<b>Tie On Depth:</b>	0.0
<b>Vertical Section:</b>		<b>Depth From (TVD) (usft)</b>	<b>+N/-S (usft)</b>	<b>+E/-W (usft)</b>	<b>Direction (°)</b>
		0.0	0.0	0.0	342.98

<b>Survey Program</b>	Date 2/28/2014				
	<b>From (usft)</b>	<b>To (usft)</b>	<b>Survey (Wellbore)</b>	<b>Tool Name</b>	<b>Description</b>
	109.5	2,164.5	Survey #2 Def Gyro (Original Wellpath)	SDI Standard Keeper	Scientific Drilling Intl. Standard Wireline Keeper
	2,164.5	6,057.5	Survey #4 Def Gyro to KOP (Original Well)	SDI Standard Keeper	Scientific Drilling Intl. Standard Wireline Keeper
	6,164.0	14,847.0	Survey #5 MWD (Original Wellpath)	SDI MWD	Scientific Drilling Intl. MWD - Standard ver 1.0.1

<b>Survey</b>									
	<b>MD (usft)</b>	<b>Inc (°)</b>	<b>Azi (azimuth) (°)</b>	<b>TVD (usft)</b>	<b>N/S (usft)</b>	<b>E/W (usft)</b>	<b>V. Sec (usft)</b>	<b>DLeg (°/100usft)</b>	
	0.0	0.00	0.00	0.0	0.0	0.0	0.0	0.00	
	109.5	0.33	154.01	109.5	-0.3	0.1	-0.3	0.30	
	209.5	0.31	151.85	209.5	-0.8	0.4	-0.9	0.02	
	309.5	0.27	145.89	309.5	-1.2	0.7	-1.4	0.05	
	409.5	0.37	126.40	409.5	-1.6	1.0	-1.8	0.15	
	509.5	0.32	146.01	509.5	-2.0	1.5	-2.4	0.13	
	609.5	0.31	149.25	609.5	-2.5	1.8	-2.9	0.02	
	709.5	0.26	134.27	709.5	-2.9	2.1	-3.4	0.09	
	809.5	0.27	154.19	809.5	-3.2	2.3	-3.8	0.09	
	909.5	0.16	179.69	909.5	-3.6	2.4	-4.2	0.14	

AUG 03 2015



EOW Completion Report



**Company:** Antero Resources  
**Project:** Doddridge County WV  
**Site:** Stewart Pad  
**Well:** Dorothy Unit 2H  
**Wellbore:** Original Wellpath  
**Design:** As Drilled

**Local Co-ordinate Reference:** Well Dorothy Unit 2H  
**TVD Reference:** 1332' GL + 22.5 RKB @ 1354.5usft  
**MD Reference:** 1332' GL + 22.5 RKB @ 1354.5usft  
**North Reference:** Grid  
**Survey Calculation Method:** Minimum Curvature  
**Database:** Oklahoma District

MD (usft)	Inc (°)	Azi (azimuth) (°)	TVD (usft)	N/S (usft)	E/W (usft)	V. Sec (usft)	DLeg (°/100usft)
1,009.5	0.28	204.40	1,009.5	-4.0	2.3	-4.5	0.15
1,109.5	0.12	171.44	1,109.5	-4.3	2.2	-4.8	0.19
1,209.5	0.06	160.72	1,209.5	-4.4	2.3	-4.9	0.06
1,309.5	0.10	275.15	1,309.5	-4.5	2.2	-4.9	0.14
1,409.5	0.04	148.49	1,409.5	-4.5	2.1	-4.9	0.13
1,509.5	0.06	71.99	1,509.5	-4.5	2.2	-5.0	0.06
1,609.5	0.14	157.45	1,609.5	-4.6	2.3	-5.1	0.15
1,709.5	0.17	92.90	1,709.5	-4.7	2.5	-5.3	0.17
1,809.5	0.18	113.28	1,809.5	-4.8	2.8	-5.4	0.06
1,909.5	0.16	113.85	1,909.5	-4.9	3.1	-5.6	0.02
2,009.5	0.12	128.90	2,009.5	-5.0	3.3	-5.8	0.05
2,109.5	0.24	101.12	2,109.5	-5.2	3.6	-6.0	0.15
2,164.5	0.21	82.58	2,164.5	-5.2	3.8	-6.0	0.14
2,264.5	0.47	324.42	2,264.5	-4.8	3.7	-5.7	0.60
2,364.5	2.28	325.47	2,364.5	-2.8	2.3	-3.4	1.81
2,464.5	5.02	322.57	2,464.2	2.3	-1.4	2.6	2.75
2,564.5	4.46	325.55	2,563.9	9.0	-6.3	10.4	0.61
2,664.5	3.43	329.54	2,663.7	14.7	-10.0	17.0	1.07
2,764.5	2.52	328.29	2,763.5	19.2	-12.7	22.1	0.91
2,864.5	1.71	324.56	2,863.5	22.3	-14.7	25.6	0.82
2,964.5	1.16	329.05	2,963.4	24.4	-16.1	28.0	0.56
3,064.5	0.73	330.06	3,063.4	25.8	-16.9	29.6	0.43
3,164.5	0.42	331.06	3,163.4	26.7	-17.4	30.6	0.31
3,264.5	0.31	299.42	3,263.4	27.1	-17.8	31.1	0.23
3,364.5	0.40	322.77	3,363.4	27.5	-18.3	31.7	0.17
3,464.5	0.20	311.26	3,463.4	27.9	-18.6	32.1	0.21
3,564.5	0.20	4.43	3,563.4	28.2	-18.8	32.5	0.18
3,664.5	0.13	357.67	3,663.4	28.5	-18.7	32.7	0.07
3,764.5	0.11	318.41	3,763.4	28.7	-18.8	32.9	0.08
3,864.5	0.04	40.24	3,863.4	28.8	-18.9	33.0	0.11
3,964.5	0.05	101.74	3,963.4	28.8	-18.8	33.0	0.05
4,064.5	0.10	1.40	4,063.4	28.9	-18.7	33.1	0.12
4,164.5	0.15	242.43	4,163.4	28.9	-18.9	33.2	0.22
4,264.5	0.15	294.56	4,263.4	28.9	-19.1	33.2	0.13
4,364.5	0.19	245.58	4,363.4	28.9	-19.4	33.3	0.15
4,464.5	0.30	231.69	4,463.4	28.6	-19.7	33.2	0.12
4,564.5	0.57	243.48	4,563.4	28.3	-20.4	33.0	0.28
4,651.5	0.71	238.31	4,650.4	27.8	-21.2	32.8	0.17
4,660.5	0.57	244.53	4,659.4	27.7	-21.3	32.8	1.73
4,685.0	0.77	236.21	4,683.9	27.6	-21.5	32.7	0.91
4,709.8	1.79	229.05	4,708.7	27.2	-22.0	32.5	4.16
4,734.8	2.66	228.28	4,733.7	26.6	-22.7	32.1	3.48
4,759.9	3.42	228.34	4,758.7	25.7	-23.7	31.5	3.03
4,785.7	4.46	230.56	4,784.5	24.6	-25.1	30.8	4.07
4,810.3	5.14	233.56	4,809.0	23.3	-26.7	30.1	2.95

# RECEIVED

AUG 03 2015



## EOW Completion Report



**Company:** Antero Resources  
**Project:** Doddridge County WV  
**Site:** Stewart Pad  
**Well:** Dorothy Unit 2H  
**Wellbore:** Original Wellpath  
**Design:** As Drilled

**Local Co-ordinate Reference:** Well Dorothy Unit 2H  
**TVD Reference:** 1332' GL + 22.5 RKB @ 1354.5usft  
**MD Reference:** 1332' GL + 22.5 RKB @ 1354.5usft  
**North Reference:** Grid  
**Survey Calculation Method:** Minimum Curvature  
**Database:** Oklahoma District

### Survey

MD (usft)	Inc (°)	Azi (azimuth) (°)	TVD (usft)	N/S (usft)	E/W (usft)	V. Sec (usft)	DLeg (°/100usft)
4,835.3	5.70	234.92	4,833.9	21.9	-28.6	29.3	2.30
4,860.6	6.64	235.93	4,859.0	20.4	-30.8	28.5	3.74
4,885.3	7.27	238.57	4,883.5	18.8	-33.4	27.7	2.86
4,909.8	8.10	239.49	4,907.8	17.1	-36.2	26.9	3.43
4,927.4	8.70	241.59	4,925.2	15.8	-38.4	26.4	3.83
4,935.4	8.86	242.27	4,933.1	15.3	-39.5	26.1	2.38
4,938.6	8.95	242.09	4,936.3	15.0	-39.9	26.0	2.94
4,947.2	9.25	242.26	4,944.8	14.4	-41.1	25.8	3.50
4,959.6	9.75	243.58	4,957.0	13.5	-42.9	25.4	4.40
4,960.1	9.77	243.63	4,957.5	13.4	-43.0	25.4	4.28
5,109.5	14.56	254.06	5,103.5	2.6	-72.5	23.7	3.52
5,134.7	15.32	254.62	5,127.9	0.9	-78.7	23.9	3.07
5,160.2	15.90	255.34	5,152.4	-0.9	-85.3	24.1	2.40
5,185.2	16.31	255.34	5,176.5	-2.7	-92.0	24.4	1.64
5,210.0	16.85	255.29	5,200.2	-4.5	-98.9	24.7	2.18
5,235.6	17.22	255.13	5,224.7	-6.4	-106.1	25.0	1.46
5,259.8	17.80	254.92	5,247.8	-8.3	-113.2	25.2	2.41
5,285.4	18.38	254.56	5,272.1	-10.3	-120.8	25.5	2.31
5,310.4	18.79	253.99	5,295.8	-12.5	-128.5	25.7	1.79
5,334.6	19.23	253.68	5,318.7	-14.7	-136.1	25.8	1.87
5,359.9	19.99	253.13	5,342.5	-17.1	-144.2	25.8	3.09
5,385.1	20.60	252.20	5,366.2	-19.7	-152.6	25.8	2.74
5,410.2	21.18	251.51	5,389.6	-22.5	-161.1	25.6	2.51
5,434.9	21.84	251.01	5,412.6	-25.4	-169.6	25.3	2.77
5,460.0	22.30	249.95	5,435.8	-28.6	-178.5	24.9	2.42
5,485.5	23.00	248.93	5,459.4	-32.0	-187.7	24.3	3.15
5,510.2	23.51	248.18	5,482.1	-35.6	-196.8	23.6	2.39
5,535.4	23.96	247.45	5,505.1	-39.4	-206.2	22.7	2.14
5,560.1	24.68	246.52	5,527.6	-43.4	-215.6	21.6	3.30
5,585.0	25.12	245.78	5,550.2	-47.6	-225.1	20.3	2.17
5,610.5	25.62	245.05	5,573.3	-52.2	-235.1	18.9	2.32
5,634.5	25.85	244.69	5,594.9	-56.6	-244.5	17.4	1.16
5,660.1	25.99	244.64	5,617.9	-61.4	-254.6	15.8	0.55
5,684.6	25.80	244.11	5,640.0	-66.0	-264.3	14.2	1.23
5,710.3	26.04	244.03	5,663.1	-70.9	-274.4	12.5	0.94
5,735.5	26.40	244.26	5,685.7	-75.8	-284.4	10.8	1.49
5,760.0	26.93	244.80	5,707.6	-80.5	-294.3	9.1	2.37
5,784.7	27.13	245.23	5,729.6	-85.3	-304.5	7.6	1.14
5,810.5	27.32	245.08	5,752.5	-90.2	-315.2	6.0	0.78
5,835.2	27.29	244.94	5,774.5	-95.0	-325.5	4.4	0.29
5,859.9	27.28	244.92	5,796.4	-99.8	-335.7	2.8	0.06
5,885.1	27.55	244.88	5,818.8	-104.7	-346.2	1.2	1.07
5,909.6	27.57	244.85	5,840.5	-109.6	-356.5	-0.4	0.10
5,934.7	26.69	245.76	5,862.8	-114.3	-366.9	-1.9	3.88

AUG 03 2015



WV GEOLOGICAL SURVEY  
MORGANTOWN, WV

EOW Completion Report



**Company:** Antero Resources  
**Project:** Doddridge County WV  
**Site:** Stewart Pad  
**Well:** Dorothy Unit 2H  
**Wellbore:** Original Wellpath  
**Design:** As Drilled

**Local Co-ordinate Reference:** Well Dorothy Unit 2H  
**TVD Reference:** 1332' GL + 22.5 RKB @ 1354.5usft  
**MD Reference:** 1332' GL + 22.5 RKB @ 1354.5usft  
**North Reference:** Grid  
**Survey Calculation Method:** Minimum Curvature  
**Database:** Oklahoma District

**Survey**

MD (usft)	Inc (°)	Azi (azimuth) (°)	TVD (usft)	N/S (usft)	E/W (usft)	V. Sec (usft)	DLeg (°/100usft)
5,960.3	25.87	246.86	5,885.8	-118.9	-377.3	-3.3	3.72
5,985.3	25.48	246.71	5,908.3	-123.2	-387.2	-4.4	1.58
6,009.8	25.37	247.11	5,930.5	-127.3	-396.9	-5.5	0.83
6,035.1	24.64	248.18	5,953.4	-131.4	-406.8	-6.5	3.39
6,057.5	24.33	248.81	5,973.8	-134.8	-415.4	-7.3	1.80
6,164.0	23.39	248.80	6,071.2	-150.3	-455.6	-10.4	0.88
6,256.0	22.51	248.19	6,155.9	-163.5	-489.0	-13.2	0.99
6,351.0	24.97	247.66	6,242.8	-177.9	-524.4	-16.6	2.60
6,445.0	22.51	246.96	6,328.9	-192.4	-559.3	-20.3	2.63
6,539.0	24.01	250.91	6,415.2	-205.7	-594.0	-22.9	2.30
6,633.0	27.17	250.21	6,500.0	-219.3	-632.2	-24.6	3.38
6,727.0	25.50	249.15	6,584.3	-233.7	-671.3	-27.0	1.85
6,821.0	22.95	249.50	6,670.0	-247.4	-707.4	-29.5	2.72
6,912.0	26.09	248.96	6,752.8	-260.8	-742.7	-31.9	3.46
7,004.0	23.43	247.68	6,836.3	-275.0	-778.5	-35.0	2.95
7,038.0	22.27	246.23	6,867.6	-280.1	-790.7	-36.4	3.79
7,069.0	23.04	250.36	6,896.2	-284.5	-801.8	-37.4	5.70
7,099.0	24.98	256.61	6,923.6	-288.0	-813.5	-37.3	10.65
7,129.0	27.90	262.20	6,950.5	-290.4	-826.6	-35.7	12.78
7,159.0	30.78	267.35	6,976.7	-291.7	-841.2	-32.7	12.76
7,189.0	33.41	271.83	7,002.1	-291.8	-857.2	-28.1	11.82
7,219.0	35.88	277.28	7,026.8	-290.4	-874.1	-21.8	13.20
7,250.0	37.81	282.38	7,051.6	-287.2	-892.4	-13.4	11.66
7,281.0	39.57	287.65	7,075.8	-282.2	-911.1	-3.2	12.04
7,311.0	40.98	293.80	7,098.7	-275.3	-929.2	8.7	14.06
7,342.0	42.12	299.60	7,121.9	-266.1	-947.6	22.9	12.94
7,372.0	43.21	304.87	7,143.9	-255.2	-964.8	38.3	12.44
7,403.0	44.32	310.85	7,166.3	-242.1	-981.7	55.9	13.81
7,415.0	45.22	312.25	7,174.9	-236.5	-988.0	63.1	11.14
<b>Middlesex</b>							
7,433.0	46.60	314.28	7,187.4	-227.6	-997.4	74.3	11.14
7,464.0	49.33	317.27	7,208.1	-211.1	-1,013.5	94.8	11.35
7,494.0	53.29	319.82	7,226.9	-193.6	-1,028.9	116.1	14.77
7,525.0	57.07	321.75	7,244.6	-173.8	-1,045.0	139.6	13.22
7,555.0	60.06	324.39	7,260.2	-153.4	-1,060.4	163.7	12.48
7,585.0	62.34	328.43	7,274.7	-131.5	-1,074.9	188.9	14.03
7,599.0	63.48	330.12	7,281.1	-120.8	-1,081.3	201.0	13.47
<b>Burkett</b>							
7,616.0	64.89	332.12	7,288.5	-107.4	-1,088.7	216.0	13.47
7,646.0	67.80	335.02	7,300.5	-82.8	-1,100.9	243.1	13.13
7,648.0	68.03	335.19	7,301.3	-81.1	-1,101.7	244.9	14.18
<b>Tully</b>							
7,676.0	71.32	337.57	7,311.0	-57.0	-1,112.2	271.0	14.18
7,706.0	74.22	340.38	7,319.9	-30.3	-1,122.5	299.6	13.17

AUG 03 2015



WV GEOLOGICAL SURVEY  
MORGANTOWN, WV

EOW Completion Report



**Company:** Antero Resources  
**Project:** Doddridge County WV  
**Site:** Stewart Pad  
**Well:** Dorothy Unit 2H  
**Wellbore:** Original Wellpath  
**Design:** As Drilled

**Local Co-ordinate Reference:** Well Dorothy Unit 2H  
**TVD Reference:** 1332' GL + 22.5 RKB @ 1354.5usft  
**MD Reference:** 1332' GL + 22.5 RKB @ 1354.5usft  
**North Reference:** Grid  
**Survey Calculation Method:** Minimum Curvature  
**Database:** Oklahoma District

**Survey**

MD (usft)	Inc (°)	Azi (azimuth) (°)	TVD (usft)	N/S (usft)	E/W (usft)	V. Sec (usft)	DLeg (°/100usft)
7,737.0	76.15	342.49	7,327.8	-1.9	-1,132.0	329.5	9.06
7,768.0	79.84	343.28	7,334.2	27.1	-1,140.9	359.9	12.16
7,798.0	82.83	343.72	7,338.8	55.5	-1,149.3	389.5	10.07
7,857.0	88.45	343.78	7,343.3	112.0	-1,165.8	448.3	9.53
7,876.0	88.74	343.88	7,343.7	130.2	-1,171.1	467.3	1.62
<b>Marcellus</b>							
7,944.0	89.78	344.25	7,344.6	195.6	-1,189.8	535.3	1.62
8,039.0	89.25	343.99	7,345.4	287.0	-1,215.7	630.3	0.62
8,134.0	90.22	343.81	7,345.8	378.2	-1,242.1	725.2	1.04
8,229.0	89.60	343.20	7,346.0	469.3	-1,269.1	820.2	0.92
8,324.0	90.66	342.84	7,345.8	560.2	-1,296.8	915.2	1.18
8,419.0	90.31	343.55	7,345.0	651.1	-1,324.3	1,010.2	0.83
8,514.0	89.87	342.76	7,344.8	742.1	-1,351.8	1,105.2	0.95
8,608.0	89.25	343.02	7,345.5	831.9	-1,379.5	1,199.2	0.72
8,703.0	90.92	344.78	7,345.4	923.2	-1,405.8	1,294.2	2.55
8,798.0	90.84	344.43	7,343.9	1,014.7	-1,431.0	1,389.2	0.38
8,892.0	89.60	344.43	7,343.6	1,105.3	-1,456.2	1,483.1	1.32
8,987.0	89.69	343.02	7,344.2	1,196.5	-1,482.9	1,578.1	1.49
9,082.0	89.25	342.58	7,345.0	1,287.2	-1,511.0	1,673.1	0.65
9,176.0	90.84	343.28	7,345.0	1,377.1	-1,538.5	1,767.1	1.85
9,271.0	90.31	342.84	7,344.0	1,467.9	-1,566.2	1,862.1	0.73
9,366.0	89.52	342.05	7,344.2	1,558.5	-1,594.9	1,957.1	1.18
9,461.0	89.25	340.82	7,345.2	1,648.6	-1,625.1	2,052.1	1.33
9,555.0	90.04	341.53	7,345.8	1,737.5	-1,655.5	2,146.0	1.13
9,650.0	89.87	341.00	7,345.8	1,827.5	-1,686.0	2,241.0	0.59
9,745.0	89.96	340.65	7,346.0	1,917.2	-1,717.2	2,335.9	0.38
9,839.0	90.40	344.07	7,345.7	2,006.8	-1,745.7	2,429.9	3.67
9,934.0	90.57	344.87	7,344.9	2,098.3	-1,771.1	2,524.8	0.86
10,029.0	89.96	343.81	7,344.4	2,189.8	-1,796.7	2,619.8	1.29
10,123.0	91.10	343.55	7,343.6	2,280.0	-1,823.1	2,713.8	1.24
10,218.0	91.10	343.81	7,341.7	2,371.2	-1,849.8	2,808.8	0.27
10,313.0	90.75	344.51	7,340.2	2,462.5	-1,875.8	2,903.7	0.82
10,408.0	90.04	343.99	7,339.6	2,554.0	-1,901.5	2,998.7	0.93
10,503.0	89.34	343.55	7,340.1	2,645.2	-1,928.1	3,093.7	0.87
10,598.0	89.87	343.46	7,340.7	2,736.3	-1,955.1	3,188.7	0.57
10,693.0	89.87	344.07	7,340.9	2,827.5	-1,981.6	3,283.7	0.64
10,788.0	90.57	343.81	7,340.6	2,918.8	-2,007.9	3,378.7	0.79
10,882.0	90.04	342.23	7,340.1	3,008.7	-2,035.4	3,472.7	1.77
10,977.0	89.43	342.32	7,340.5	3,099.2	-2,064.3	3,567.7	0.65
11,072.0	90.40	341.88	7,340.7	3,189.6	-2,093.5	3,662.6	1.12
11,167.0	90.40	342.32	7,340.0	3,280.0	-2,122.7	3,757.6	0.46
11,262.0	89.87	341.70	7,339.8	3,370.3	-2,152.0	3,852.6	0.86
11,357.0	89.25	342.23	7,340.5	3,460.6	-2,181.4	3,947.6	0.86
11,452.0	90.48	341.79	7,340.7	3,551.0	-2,210.8	4,042.6	1.38
11,546.0	90.13	341.97	7,340.2	3,640.3	-2,240.0	4,136.6	0.42

AUG 03 2015



## EOW Completion Report



**Company:** Antero Resources  
**Project:** Doddridge County WV  
**Site:** Stewart Pad  
**Well:** Dorothy Unit 2H  
**Wellbore:** Original Wellpath  
**Design:** As Drilled

**Local Co-ordinate Reference:** Well Dorothy Unit 2H  
**TVD Reference:** 1332' GL + 22.5 RKB @ 1354.5usft  
**MD Reference:** 1332' GL + 22.5 RKB @ 1354.5usft  
**North Reference:** Grid  
**Survey Calculation Method:** Minimum Curvature  
**Database:** Oklahoma District

### Survey

MD (usft)	Inc (°)	Azi (azimuth) (°)	TVD (usft)	N/S (usft)	E/W (usft)	V. Sec (usft)	DLeg (°/100usft)
11,641.0	89.87	341.39	7,340.2	3,730.5	-2,269.9	4,231.5	0.67
11,736.0	90.04	342.23	7,340.3	3,820.8	-2,299.5	4,326.5	0.90
11,831.0	89.87	343.02	7,340.4	3,911.4	-2,327.9	4,421.5	0.85
11,925.0	89.43	343.37	7,340.9	4,001.4	-2,355.1	4,515.5	0.60
12,020.0	88.90	342.76	7,342.3	4,092.3	-2,382.7	4,610.5	0.85
12,115.0	90.66	344.87	7,342.7	4,183.5	-2,409.2	4,705.5	2.89
12,210.0	90.84	343.81	7,341.5	4,275.0	-2,434.9	4,800.4	1.13
12,305.0	88.72	342.58	7,341.8	4,365.9	-2,462.3	4,895.4	2.58
12,400.0	88.46	342.41	7,344.2	4,456.5	-2,490.9	4,990.4	0.33
12,495.0	89.43	342.58	7,345.9	4,547.1	-2,519.5	5,085.4	1.04
12,590.0	90.84	343.28	7,345.7	4,637.9	-2,547.3	5,180.4	1.66
12,686.0	90.48	342.23	7,344.6	4,729.6	-2,575.8	5,276.4	1.16
12,781.0	91.28	343.20	7,343.1	4,820.3	-2,604.0	5,371.4	1.32
12,875.0	90.48	343.02	7,341.7	4,910.2	-2,631.3	5,465.3	0.87
12,970.0	89.69	342.23	7,341.5	5,000.9	-2,659.7	5,560.3	1.18
13,065.0	90.22	344.25	7,341.6	5,091.8	-2,687.1	5,655.3	2.20
13,160.0	89.34	342.76	7,342.0	5,182.9	-2,714.1	5,750.3	1.82
13,255.0	93.21	346.71	7,339.9	5,274.5	-2,739.1	5,845.2	5.82
13,350.0	91.36	346.10	7,336.1	5,366.8	-2,761.4	5,940.0	2.05
13,445.0	90.57	343.90	7,334.5	5,458.5	-2,786.0	6,034.9	2.46
13,539.0	91.45	343.81	7,332.8	5,548.8	-2,812.1	6,128.9	0.94
13,632.0	90.40	342.32	7,331.3	5,637.7	-2,839.2	6,221.8	1.96
13,727.0	89.96	342.84	7,331.0	5,728.4	-2,867.6	6,316.8	0.72
13,822.0	90.84	341.17	7,330.3	5,818.7	-2,897.0	6,411.8	1.99
13,917.0	90.75	340.12	7,329.0	5,908.3	-2,928.4	6,506.7	1.11
14,011.0	90.75	343.72	7,327.8	5,997.7	-2,957.6	6,600.7	3.83
14,106.0	90.66	344.43	7,326.6	6,089.0	-2,983.7	6,695.7	0.75
14,201.0	90.13	343.11	7,326.0	6,180.2	-3,010.2	6,790.7	1.50
14,296.0	89.16	343.20	7,326.6	6,271.1	-3,037.7	6,885.7	1.03
14,391.0	88.81	343.20	7,328.2	6,362.1	-3,065.2	6,980.6	0.37
14,486.0	90.57	344.16	7,328.8	6,453.2	-3,091.9	7,075.6	2.11
14,581.0	89.52	343.90	7,328.7	6,544.6	-3,118.0	7,170.6	1.14
14,676.0	88.72	342.49	7,330.1	6,635.5	-3,145.5	7,265.6	1.71
14,795.0	91.14	342.59	7,330.3	6,749.0	-3,181.2	7,384.6	2.04
14,847.0	90.50	342.59	7,329.5	6,798.6	-3,196.8	7,436.6	1.23





**Company:** Antero Resources  
**Project:** Doddridge County WV  
**Site:** Stewart Pad  
**Well:** Dorothy Unit 2H  
**Wellbore:** Original Wellpath  
**Design:** As Drilled

**Local Co-ordinate Reference:** Well Dorothy Unit 2H  
**TVD Reference:** 1332' GL + 22.5 RKB @ 1354.5usft  
**MD Reference:** 1332' GL + 22.5 RKB @ 1354.5usft  
**North Reference:** Grid  
**Survey Calculation Method:** Minimum Curvature  
**Database:** Oklahoma District

Design Annotations

Measured Depth (usft)	Vertical Depth (usft)	Local Coordinates		Comment
		+N/-S (usft)	+E/-W (usft)	
7,415.0	7,174.9	-236.5	-988.0	Middlesex
7,599.0	7,281.1	-120.8	-1,081.3	Burkett
7,648.0	7,301.3	-81.1	-1,101.7	Tully
7,876.0	7,343.7	130.2	-1,171.1	Marcellus

Checked By: \_\_\_\_\_ Approved By: \_\_\_\_\_ Date: \_\_\_\_\_

**RECEIVED**  
 AUG 03 2015  
 WV GEOLOGICAL SURVEY  
 MORGANTOWN, WV