

LATITUDE 39°22'30"

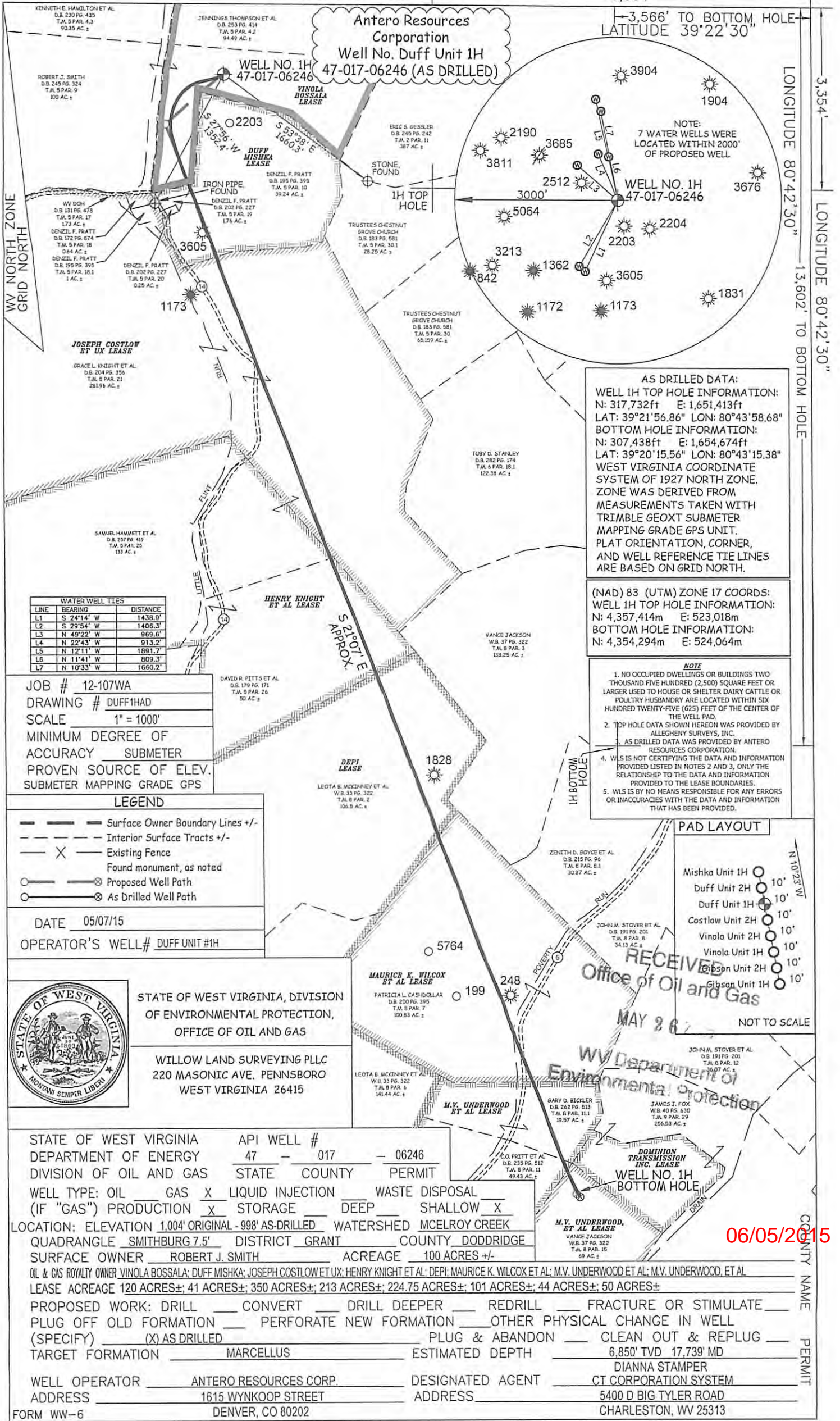
6,964'

3,566' TO BOTTOM, HOLE  
LATITUDE 39°22'30"

LONGITUDE 80°42'30"

3,354'  
LONGITUDE 80°42'30"

13,602' TO BOTTOM HOLE



RECEIVED  
Office of Oil and Gas  
MAY 26 2015

WV Department of Environmental Protection

06/05/2015