

LATITUDE 39°20'00"

7,487'

10,141' TO BOTTOM HOLE  
LATITUDE 39°20'00"

LONGITUDE 80°40'00"

5,951' TO BOTTOM HOLE

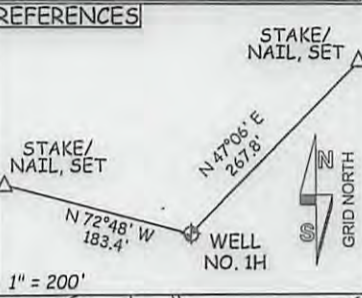
12,792'

LONGITUDE 80°40'00"

Antero Resources  
Appalachian Corporation  
Well No. Vanscoy Unit 1H

NOTES:  
 WELL 1H TOP HOLE INFORMATION:  
 N: 292,968ft E: 1,662,350ft  
 LAT: 39°17'53.57" LON: 80°41'35.25"  
 BOTTOM HOLE INFORMATION:  
 N: 299,843ft E: 1,659,785ft  
 LAT: 39°19'01.18" LON: 80°42'09.04"  
 WEST VIRGINIA COORDINATE SYSTEM OF 1927 NORTH ZONE. ZONE WAS DERIVED FROM MEASUREMENTS TAKEN WITH TRIMBLE GEOXT SUBMETER MAPPING GRADE GPS UNIT. PLAT ORIENTATION, CORNER, AND WELL REFERENCE TIE LINES ARE BASED ON GRID NORTH.

(NAD) 83 (UTM) ZONE 17 COORDS:  
 WELL 1H TOP HOLE INFORMATION:  
 N: 4,349,925m E: 526,476m  
 BOTTOM HOLE INFORMATION:  
 N: 4,352,006m E: 525,660m



WV NORTH ZONE  
GRID NORTH

ROBERT M. HAUG ET AL  
D.B. 283 PG. 144  
T.M. 9 PAR. 2  
88.5 AC. ±

FRANCES L. SWENTZEL  
W.B. 26 PG. 361  
T.M. 13 PAR. 14  
44.20 AC. ±

DWIGHT E. & TINA M. MOORE  
D.B. 222 PG. 87  
T.M. 13 PAR. 17  
111.04 AC. ±

MT SALEM REVIVAL  
GROUNDS, INC.  
D.B. 239 PG. 275  
T.M. 13 PAR. 15.1  
37.73 AC. ±

DWIGHT MOORE  
ET UX LEASE

RUTH E. GAUGHAN  
D.B. 275 PG. 72  
T.M. 13 PAR. 18  
34 AC. ±

WELL NO. 1H  
BOTTOM HOLE

DWIGHT E. & TINA M. MOORE  
D.B. 222 PG. 87  
T.M. 13 PAR. 21  
82.83 AC. ±

1H BOTTOM HOLE

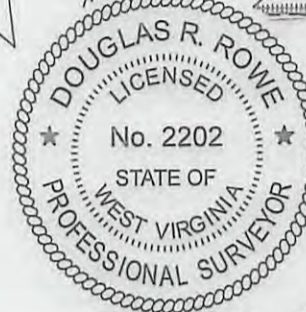
RONALD L. STUBBS  
W.S. 29 PG. 206  
T.M. 13 PAR. 23.2  
131.48 AC. ±

DWIGHT E. & TINA M. MOORE  
D.B. 215 PG. 84  
T.M. 13 PAR. 22  
78 AC. ±

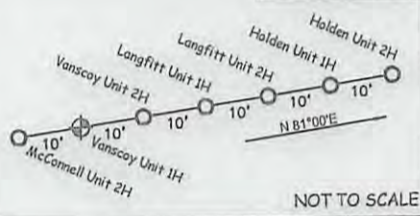
CELEST A. KRAMER  
D.B. 250 PG. 552  
T.M. 9 PAR. 4  
100.40 AC. ±

DWIGHT E. MOORE  
ET UX LEASE  
D.W. 215 PG. 84  
T.M. 9 PAR. 4  
21.36 AC. ±

JUDITH A. NOLL ET AL  
D.B. 226 PG. 32  
T.M. 13 PAR. 28  
26 AC. ±



PAD LAYOUT



U.S. HEFLIN  
ET UX LEASE  
FERN O. WORKMAN  
W.S. 19 PG. 341  
T.M. 9 PAR. 5  
43 AC. ±

ROBERT S. MOORE  
D.B. 256 PG. 530  
T.M. 13 PAR. 1  
82.6 AC. ±

ROGER UNDERWOOD ET AL  
D.B. 250 PG. 422  
T.M. 13 PAR. 29  
54.9 AC. ±

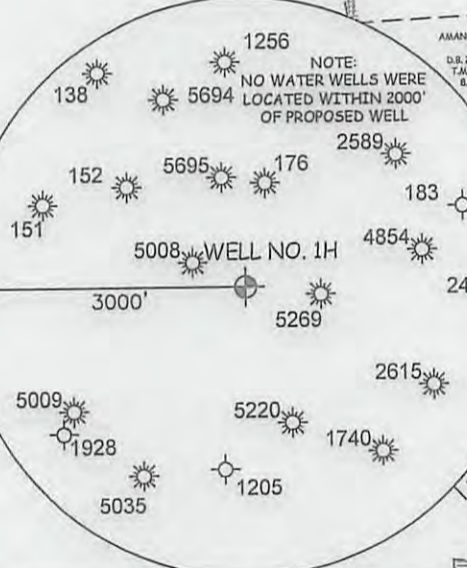
JOHN M. HICKMAN  
D.B. 172 PG. 274  
T.M. 13 PAR. 30  
19 AC. ±

JOHN V. KERNS,  
ET AL LEASE

ROBERT S. MOORE  
D.B. 256 PG. 530  
T.M. 13 PAR. 2.1  
82.6 AC. ±

CECIL M. RANDOLPH ET AL  
D.B. 252 PG. 659  
T.M. 13 PAR. 11  
9.26 AC. ±

PHILLIP W. SAUNDERS ET AL  
D.B. 253 PG. 650  
T.M. 13 PAR. 33  
5.20 AC. ±



NOTE:  
NO WATER WELLS WERE  
LOCATED WITHIN 2000'  
OF PROPOSED WELL

AMANDA L. DAVIS  
ET AL  
D.B. 225 PG. 701  
T.M. 13 PAR. 2  
82.6 AC. ±

JOHN E. SMITH  
LEASE  
M & R  
INVESTMENTS LLC  
D.B. 274 PG. 612  
T.M. 13 PAR. 5  
60.5 AC. ±

LANDING POINT  
N:293161  
E:1661892

CLYDE R. FRASHURE JR.  
D.B. 198 PG. 572  
T.M. 16 PAR. 4  
98.91 AC. ±

LEONA HOLDEN  
ET UX LEASE  
RALPH J. VALENTINE ET AL  
D.B. 220 PG. 159  
T.M. 16 PAR. 7.9  
7.37 AC. ±

IRON ROD,  
FOUND

M.M. NEELEY  
ET AL LEASE  
DAVID E. BOWYER  
D.B. 220 PG. 56  
T.M. 16 PAR. 14  
260.21 AC. ±

DEPI LEASE  
DELBERT E. LEATHERMAN ET AL  
D.B. 214 PG. 444  
T.M. 16 PAR. 15  
209.48 AC. ±

JOB # 12-113WA  
 DRAWING # VANSCOYUNIT1HR1  
 SCALE 1" = 1000'  
 MINIMUM DEGREE OF ACCURACY SUBMETER  
 PROVEN SOURCE OF ELEV. SUBMETER MAPPING GRADE GPS

I THE UNDERSIGNED, HEREBY CERTIFY THAT THIS PLAT IS CORRECT TO THE BEST OF MY KNOWLEDGE AND BELIEF AND SHOWS ALL THE INFORMATION REQUIRED BY LAW AND THE REGULATIONS ISSUED AND PERSCRIBED BY THE DEPARTMENT OF ENVIRONMENTAL PROTECTION.



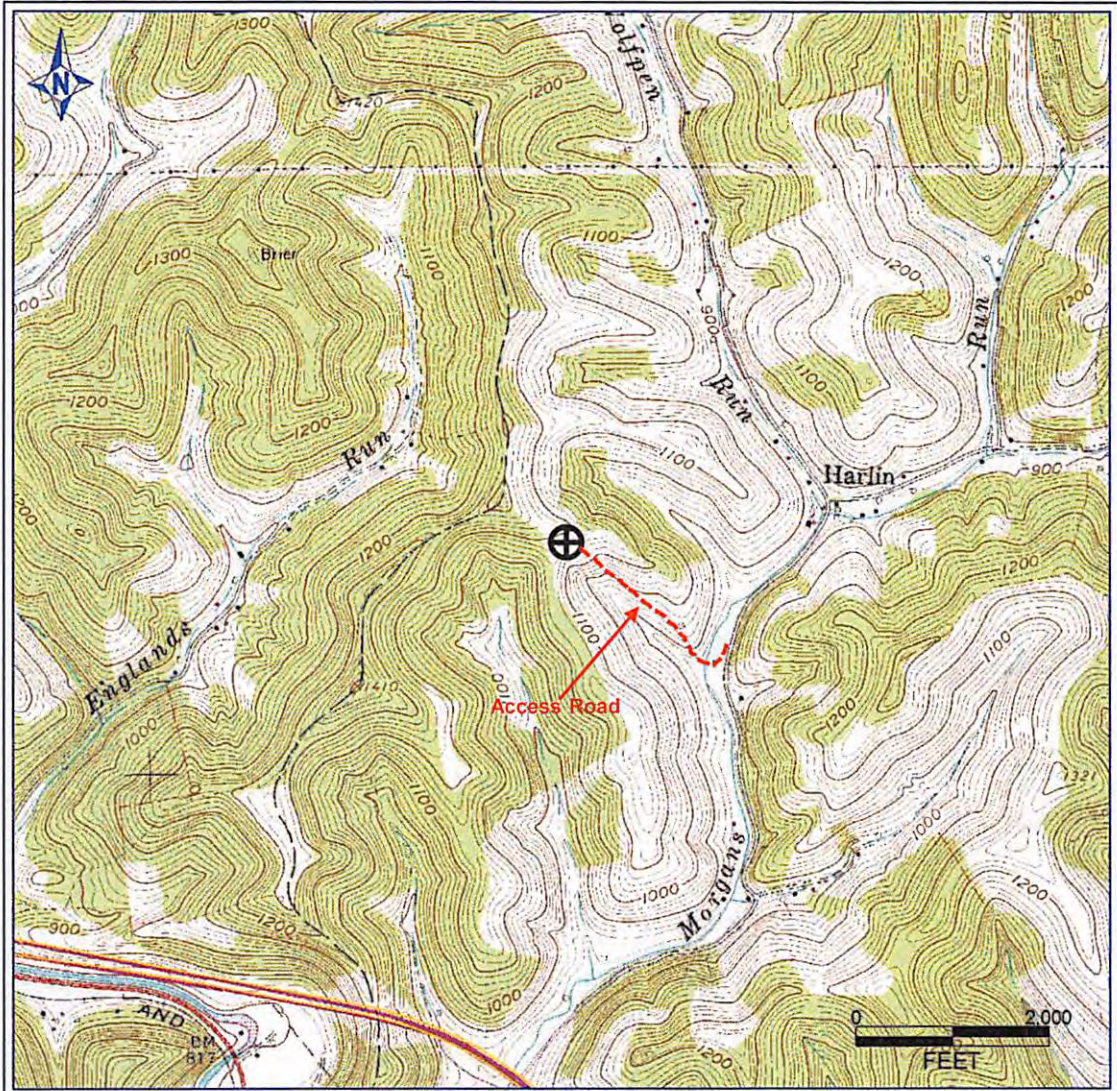
STATE OF WEST VIRGINIA, DIVISION  
 OF ENVIRONMENTAL PROTECTION,  
 OFFICE OF OIL AND GAS

WILLOW LAND SURVEYING PLLC  
 220 MASONIC AVE. PENNSBORO  
 WEST VIRGINIA 26415

LEGEND  
 — Surface Owner Boundary Lines +/-  
 - - - Interior Surface Tracts +/-  
 ⊕ Existing Fence  
 ⊕ Found monument, as noted

DOUGLAS R. ROWE P.S. 2202  
 DATE 03/14/13  
 OPERATOR'S WELL# VANSCOY UNIT #1H  
 API WELL # H6A  
 47 - 017 - 6262  
 STATE COUNTY PERMIT

STATE OF WEST VIRGINIA  
 DEPARTMENT OF ENERGY  
 DIVISION OF OIL AND GAS  
 WELL TYPE: OIL \_\_\_ GAS X LIQUID INJECTION \_\_\_ WASTE DISPOSAL \_\_\_  
 (IF "GAS") PRODUCTION X STORAGE \_\_\_ DEEP \_\_\_ SHALLOW X  
 LOCATION: ELEVATION 1,180' WATERSHED MORGANS RUN  
 QUADRANGLE SMITHBURG 7.5' DISTRICT GRANT COUNTY DODDRIDGE  
 SURFACE OWNER DELBERT E. LEATHERMAN ET AL ACREAGE 209.48 ACRES +/-  
 OIL & GAS ROYALTY OWNER DEPI; M.M. NEELEY ET AL; LEONA HOLDEN ET UX;  
 JOHN E. SMITH; JOHN W. KERNS ET AL; W.S. HEFLIN ET UX; DWIGHT E. MOORE ET UX; LEASE ACREAGE 71 ACRES ±; 300 ACRES ±; 82.5 ACRES ±;  
 60.5 ACRES ±; 86 ACRES ±; 46 ACRES ±; 21.36 ACRES ±; 238 ACRES ±  
 PROPOSED WORK: DRILL X CONVERT \_\_\_ DRILL DEEPER \_\_\_ REDRILL \_\_\_ FRACTURE OR STIMULATE X  
 PLUG OFF OLD FORMATION \_\_\_ PERFORATE NEW FORMATION X OTHER PHYSICAL CHANGE IN WELL  
 (SPECIFY) PLUG & ABANDON \_\_\_ CLEAN OUT & REPLUG \_\_\_  
 TARGET FORMATION MARCELLUS ESTIMATED DEPTH 7,300' TVD 15,300' MD  
 WELL OPERATOR ANTERO RESOURCES APPALACHIAN CORP. DESIGNATED AGENT DIANNA STAMPER  
 ADDRESS 1625 17TH STREET ADDRESS 5400 D BIG TYLER ROAD  
 DENVER, CO 80202 CHARLESTON, WV 25310



PETRA 11/29/2012 3:57:38 PM

Antero Resources Corporation

APPALACHIAN BASIN

Vanscoy Unit 1H

Doddridge County



REMARKS  
 QUADRANGLE: SMITHBURG  
 WATERSHED: MORGANS RUN  
 DISTRICT: GRANT

Date: 11/30/12

Received  
 Office of Oil & Gas

APR 12 2013