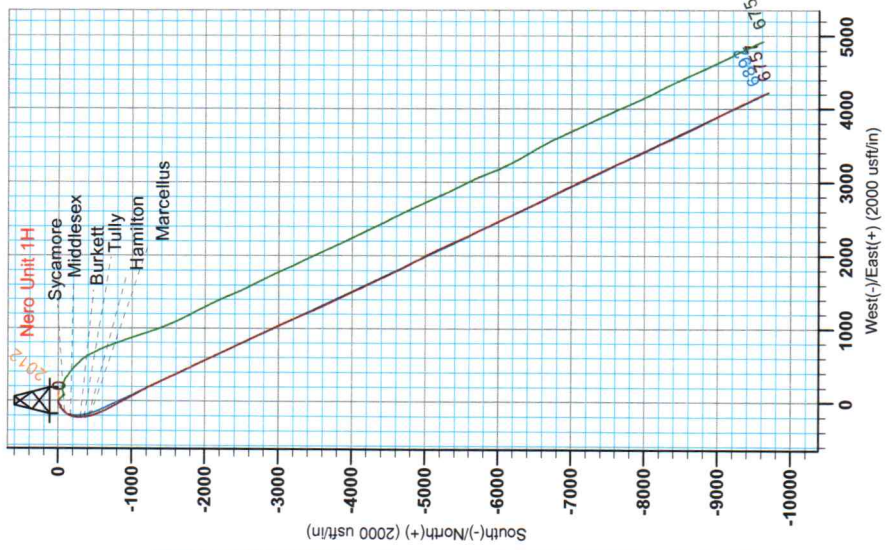
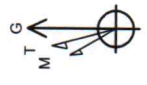


17.06275

Azimuth to Grid North
 True North: -0.10°
 Magnetic North: -8.48°
 Strength: 52398.48nT
 Dip Angle: 66.89°
 Date: 8/6/2013
 Model: IGRF2010

To convert Magnetic North to Grid, Subtract 8.48°
 To convert True North to Grid, Subtract 0.10°



WELL DETAILS: Mash Unit 2H

+N/-S	+E/-W	Northing	Easting	Longitude	Slot
0.0	0.0	14261940.18	1683175.38	16° 28' 42.3" N 80° 50' 56.071" W	

Genie Lightfoot
 Scientific Drilling
 421 South Eagle Lane
 Oklahoma City, Oklahoma
 405-787-3663

Scientific Drilling

REFERENCE INFORMATION
 Coordinates (NED) Reference: Well Mash Unit 2H, Grid North
 Vertical (VD) Reference: Mash Unit 2H, GE, 1164 + 25' RNB @ 1188.0usft
 Measured Length Reference: Mash Unit 2H, GE, 1164 + 25' RNB @ 1188.0usft
 Calculation Method: Minimum Curvature

LEGEND

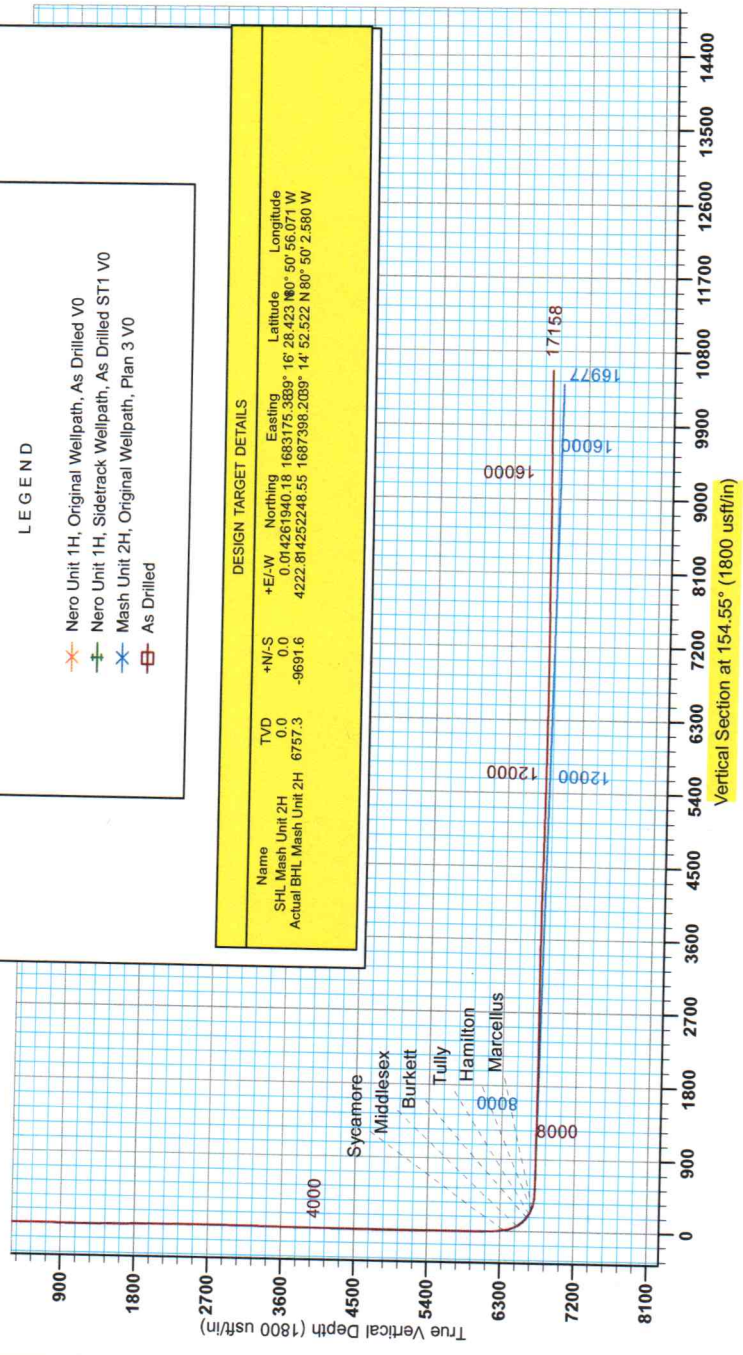
- ✖ Nero Unit 1H, Original Wellpath, As Drilled V0
- Nero Unit 1H, Sidetrack Wellpath, As Drilled ST1 V0
- ✖ Mash Unit 2H, Original Wellpath, Plan 3 V0
- As Drilled

DESIGN TARGET DETAILS

Name	TVD	+N/-S	+E/-W	Northing	Easting	Latitude	Longitude
SHL Mash Unit 2H	0.0	0.0	0.01426194018	1683175.3839°	16° 28' 42.3" N 80° 50' 56.071" W		
Actual BHL Mash Unit 2H	6757.3	-9691.6	4222.81425224855	1687398.2039°	14° 52' 52.2" N 80° 50' 2.580" W		

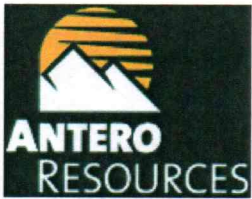


Antero Resources
 Mash Unit 2H
 Doddridge County WV
 Northing: 14261940.18
 Easting: 1683175.38
 As Drilled



Vertical Section at 154.55° (1800 usft/in)

17-06275



Antero Resources

Doddridge County WV
Nero Pad
Mash Unit 2H
Original Wellpath

Design: As Drilled

EOW Completion Report

02 October, 2013

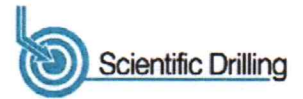


05/06/2022



17-06275

EOW Completion Report



Company:	Antero Resources	Local Co-ordinate Reference:	Well Mash Unit 2H
Project:	Doddridge County WV	TVD Reference:	Mash Unit 2H GL 1164' +25' RKB @ 1189.0usft
Site:	Nero Pad	MD Reference:	Mash Unit 2H GL 1164' +25' RKB @ 1189.0usft
Well:	Mash Unit 2H	North Reference:	Grid
Wellbore:	Original Wellpath	Survey Calculation Method:	Minimum Curvature
Design:	As Drilled	Database:	Oklahoma District

Project	Doddridge County WV, McClellan District		
Map System:	Universal Transverse Mercator (US Survey Fee	System Datum:	Mean Sea Level
Geo Datum:	NAD 1927 (NADCON CONUS)		
Map Zone:	Zone 17N (84 W to 78 W)		

Site	Nero Pad				
Site Position:		Northing:	14,261,930.17 usft	Latitude:	39° 16' 28.324 N
From:	Map	Easting:	1,683,174.55 usft	Longitude:	80° 50' 56.082 W
Position Uncertainty:	0.0 usft	Slot Radius:	13-3/16"	Grid Convergence:	0.10 °

Well	Mash Unit 2H, Marcellus					
Well Position	+N/-S	0.0 usft	Northing:	14,261,940.18 usft	Latitude:	39° 16' 28.423 N
	+E/-W	0.0 usft	Easting:	1,683,175.38 usft	Longitude:	80° 50' 56.071 W
Position Uncertainty	2.0 usft		Wellhead Elevation:	1,189.0 usft	Ground Level:	1,164.0 usft

Wellbore	Original Wellpath				
-----------------	-------------------	--	--	--	--

Magnetics	Model Name	Sample Date	Declination (°)	Dip Angle (°)	Field Strength (nT)
	IGRF2010	8/8/2013	-8.39	66.89	52,398

Design	As Drilled				
---------------	------------	--	--	--	--

Audit Notes:					
Version:	1.0	Phase:	ACTUAL	Tie On Depth:	0.0

Vertical Section:	Depth From (TVD) (usft)	+N/-S (usft)	+E/-W (usft)	Direction (°)
	0.0	0.0	0.0	154.55

Survey Program		Date			
		10/2/2013			
From (usft)	To (usft)	Survey (Wellbore)	Tool Name	Description	
100.0	5,939.0	Survey #3 Def Gyro to KOP (Original Well	SDI Standard Keeper	Scientific Drilling Intl. Standard Wireline Keeper	
5,986.0	17,158.0	Survey #4 MWD (Original Wellpath)	SDI MWD	Scientific Drilling Intl. MWD - Standard ver 1.0.1	

MD (usft)	Inc (°)	Azi (azimuth) (°)	TVD (usft)	N/S (usft)	E/W (usft)	V. Sec (usft)	DLeg (°/100usft)
0.0	0.00	0.00	0.0	0.0	0.0	0.0	0.00
100.0	0.19	317.78	100.0	0.1	-0.1	-0.2	0.19
200.0	0.23	192.88	200.0	0.0	-0.3	-0.2	0.37
300.0	0.04	174.04	300.0	-0.2	-0.3	0.0	0.19
400.0	0.09	203.63	400.0	-0.3	-0.3	0.1	0.06
500.0	0.24	212.10	500.0	-0.5	-0.5	0.3	0.15
600.0	0.11	192.06	600.0	-0.8	-0.6	0.5	0.14
700.0	2.69	261.63	700.0	-1.2	-3.0	-0.1	2.65
800.0	5.28	260.35	799.7	-2.4	-9.8	-2.1	2.59
900.0	6.06	261.18	899.2	-3.9	-19.6	-4.9	0.78
1,000.0	6.17	260.24	998.7	-5.7	-30.1	-7.8	0.15



17-06275

EOW Completion Report



Company: Antero Resources	Local Co-ordinate Reference: Well Mash Unit 2H
Project: Doddridge County WV	TVD Reference: Mash Unit 2H GL 1164' +25' RKB @ 1189.0usft
Site: Nero Pad	MD Reference: Mash Unit 2H GL 1164' +25' RKB @ 1189.0usft
Well: Mash Unit 2H	North Reference: Grid
Wellbore: Original Wellpath	Survey Calculation Method: Minimum Curvature
Design: As Drilled	Database: Oklahoma District

MD (usft)	Inc (°)	Azi (azimuth) (°)	TVD (usft)	N/S (usft)	E/W (usft)	V. Sec (usft)	DLeg (°/100usft)
1,100.0	5.32	243.64	1,098.2	-8.6	-39.5	-9.2	1.86
1,200.0	5.74	242.68	1,197.7	-13.0	-48.1	-9.0	0.43
1,300.0	4.70	230.84	1,297.3	-17.9	-55.7	-7.8	1.49
1,400.0	2.80	210.45	1,397.1	-22.6	-60.2	-5.5	2.29
1,500.0	2.11	212.84	1,497.0	-26.2	-62.4	-3.1	0.70
1,600.0	1.79	212.91	1,596.9	-29.1	-64.2	-1.4	0.32
1,700.0	1.39	209.54	1,696.9	-31.4	-65.7	0.2	0.41
1,800.0	1.16	207.06	1,796.8	-33.4	-66.7	1.5	0.24
1,900.0	0.94	215.27	1,896.8	-35.0	-67.7	2.5	0.27
2,000.0	0.81	210.47	1,996.8	-36.2	-68.5	3.3	0.15
2,100.0	0.78	210.16	2,096.8	-37.4	-69.2	4.1	0.03
2,200.0	0.69	213.70	2,196.8	-38.5	-69.9	4.8	0.10
2,300.0	0.89	221.04	2,296.8	-39.6	-70.7	5.4	0.22
2,400.0	0.76	232.14	2,396.8	-40.6	-71.8	5.8	0.21
2,500.0	0.76	234.63	2,496.8	-41.4	-72.8	6.1	0.03
2,600.0	0.66	250.97	2,596.8	-42.0	-73.9	6.1	0.22
2,700.0	0.66	277.05	2,696.8	-42.1	-75.0	5.8	0.30
2,800.0	0.67	287.31	2,796.8	-41.8	-76.2	5.1	0.12
2,900.0	0.69	297.85	2,896.7	-41.4	-77.3	4.2	0.13
3,000.0	0.76	291.13	2,996.7	-40.9	-78.4	3.2	0.11
3,100.0	0.80	303.72	3,096.7	-40.2	-79.6	2.1	0.18
3,200.0	0.79	302.35	3,196.7	-39.5	-80.8	0.9	0.02
3,300.0	0.73	315.21	3,296.7	-38.7	-81.8	-0.2	0.18
3,400.0	0.65	315.71	3,396.7	-37.8	-82.6	-1.4	0.08
3,500.0	0.71	319.53	3,496.7	-36.9	-83.4	-2.5	0.08
3,600.0	0.77	314.63	3,596.7	-36.0	-84.3	-3.7	0.09
3,700.0	0.74	312.09	3,696.7	-35.1	-85.3	-5.0	0.04
3,800.0	0.75	317.08	3,796.7	-34.2	-86.2	-6.2	0.07
3,900.0	0.78	314.56	3,896.7	-33.2	-87.1	-7.5	0.05
4,000.0	0.60	314.08	3,996.7	-32.4	-88.0	-8.6	0.18
4,100.0	0.75	311.18	4,096.6	-31.6	-88.9	-9.7	0.15
4,200.0	0.80	332.08	4,196.6	-30.5	-89.7	-11.0	0.29
4,300.0	0.65	339.81	4,296.6	-29.4	-90.2	-12.2	0.18
4,400.0	0.52	321.96	4,396.6	-28.5	-90.7	-13.2	0.22
4,500.0	0.27	309.53	4,496.6	-28.0	-91.1	-13.9	0.26
4,600.0	0.21	319.87	4,596.6	-27.7	-91.4	-14.3	0.07
4,700.0	0.30	321.80	4,696.6	-27.3	-91.7	-14.7	0.09
4,800.0	0.10	344.16	4,796.6	-27.1	-91.9	-15.1	0.21
4,900.0	0.06	65.07	4,896.6	-26.9	-91.9	-15.2	0.11
5,000.0	0.11	104.06	4,996.6	-26.9	-91.7	-15.1	0.07
5,100.0	0.08	104.24	5,096.6	-27.0	-91.6	-15.0	0.03
5,200.0	0.08	102.92	5,196.6	-27.0	-91.4	-14.9	0.00
5,300.0	0.27	62.94	5,296.6	-26.9	-91.2	-14.9	0.21
5,400.0	0.17	114.85	5,396.6	-26.9	-90.8	-14.8	0.21



17-06275

EOW Completion Report



Company:	Antero Resources	Local Co-ordinate Reference:	Well Mash Unit 2H
Project:	Doddridge County WV	TVD Reference:	Mash Unit 2H GL 1164' +25' RKB @ 1189.0usft
Site:	Nero Pad	MD Reference:	Mash Unit 2H GL 1164' +25' RKB @ 1189.0usft
Well:	Mash Unit 2H	North Reference:	Grid
Wellbore:	Original Wellpath	Survey Calculation Method:	Minimum Curvature
Design:	As Drilled	Database:	Oklahoma District

Survey								
MD (usft)	Inc (°)	Azi (azimuth) (°)	TVD (usft)	N/S (usft)	E/W (usft)	V. Sec (usft)	DLeg (°/100usft)	
5,500.0	0.15	113.87	5,496.6	-27.0	-90.6	-14.5	0.02	
5,600.0	0.13	127.52	5,596.6	-27.1	-90.4	-14.3	0.04	
5,700.0	0.45	139.28	5,696.6	-27.5	-90.0	-13.9	0.32	
5,800.0	0.44	142.25	5,796.6	-28.1	-89.5	-13.1	0.03	
5,900.0	0.50	133.97	5,896.6	-28.7	-89.0	-12.3	0.09	
5,939.0	0.32	162.24	5,935.6	-28.9	-88.8	-12.1	0.68	
5,986.0	0.53	134.86	5,982.6	-29.2	-88.6	-11.7	0.61	
6,081.0	2.81	236.72	6,077.6	-30.8	-90.3	-11.0	3.12	
6,112.0	6.95	239.10	6,108.5	-32.2	-92.5	-10.7	13.37	
6,144.0	10.64	234.09	6,140.1	-34.9	-96.6	-10.0	11.77	
6,176.0	13.81	231.72	6,171.3	-39.0	-102.0	-8.6	10.03	
6,208.0	16.62	230.92	6,202.2	-44.2	-108.5	-6.7	8.81	
6,239.0	18.82	229.34	6,231.7	-50.3	-115.7	-4.3	7.26	
6,271.0	20.14	223.63	6,261.9	-57.7	-123.5	-1.0	7.24	
6,303.0	21.37	217.65	6,291.8	-66.3	-130.8	3.6	7.65	
6,334.0	23.65	221.34	6,320.5	-75.4	-138.4	8.6	8.65	
6,360.0	25.93	224.91	6,344.1	-83.3	-145.8	12.6	10.49	
Sycamore								
6,366.0	26.47	225.65	6,349.5	-85.2	-147.7	13.5	10.49	
6,398.0	29.63	226.44	6,377.7	-95.6	-158.6	18.2	9.94	
6,430.0	31.39	222.84	6,405.3	-107.2	-170.0	23.8	7.93	
6,461.0	32.89	216.69	6,431.5	-119.9	-180.5	30.7	11.60	
6,493.0	35.17	210.09	6,458.1	-134.8	-190.3	40.0	13.56	
6,525.0	37.37	205.96	6,483.9	-151.5	-199.2	51.2	10.27	
6,557.0	39.57	201.57	6,508.9	-169.8	-207.2	64.3	10.96	
6,561.0	39.93	200.83	6,512.0	-172.1	-208.1	66.0	14.85	
Middlesex								
6,588.0	42.47	196.12	6,532.3	-189.0	-213.7	78.8	14.85	
6,620.0	45.46	192.25	6,555.3	-210.5	-219.1	95.9	12.56	
6,652.0	48.54	189.35	6,577.2	-233.5	-223.5	114.8	11.68	
6,684.0	51.79	184.96	6,597.7	-257.9	-226.5	135.5	14.63	
6,715.0	54.87	181.88	6,616.2	-282.7	-228.0	157.3	12.73	
6,739.0	57.50	179.55	6,629.5	-302.6	-228.3	175.2	13.62	
Burkett								
6,747.0	58.39	178.80	6,633.8	-309.4	-228.2	181.3	13.62	
6,779.0	61.91	176.17	6,649.7	-337.1	-226.9	206.9	13.11	
6,798.0	64.06	174.48	6,658.3	-354.0	-225.5	222.7	13.80	
Tully								
6,810.0	65.42	173.44	6,663.5	-364.8	-224.4	233.0	13.80	
6,842.0	69.12	169.75	6,675.8	-394.0	-220.1	261.2	15.71	
6,866.0	70.50	168.10	6,684.1	-416.1	-215.7	283.0	8.65	
Hamilton								
6,874.0	70.96	167.55	6,686.8	-423.5	-214.2	290.3	8.65	
6,888.0	71.57	166.24	6,691.2	-436.4	-211.1	303.3	9.88	
Marcellus								



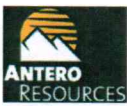
17-06275

EOW Completion Report



Company: Antero Resources	Local Co-ordinate Reference: Well Mash Unit 2H
Project: Doddridge County WV	TVD Reference: Mash Unit 2H GL 1164' +25' RKB @ 1189.0usft
Site: Nero Pad	MD Reference: Mash Unit 2H GL 1164' +25' RKB @ 1189.0usft
Well: Mash Unit 2H	North Reference: Grid
Wellbore: Original Wellpath	Survey Calculation Method: Minimum Curvature
Design: As Drilled	Database: Oklahoma District

MD (usft)	Inc (°)	Azi (azimuth) (°)	TVD (usft)	N/S (usft)	E/W (usft)	V. Sec (usft)	DLeg (°/100usft)
6,906.0	72.37	164.57	6,696.8	-452.9	-206.8	320.1	9.88
6,938.0	75.18	161.93	6,705.8	-482.4	-198.0	350.5	11.83
6,969.0	78.96	159.29	6,712.7	-510.8	-187.9	380.5	14.75
7,001.0	82.75	157.54	6,717.8	-540.2	-176.3	412.0	13.02
7,023.0	85.38	156.04	6,720.1	-560.3	-167.7	433.9	13.74
7,055.0	88.02	154.02	6,721.9	-589.3	-154.2	465.8	10.38
7,087.0	88.72	152.35	6,722.8	-617.8	-139.8	497.8	5.66
7,119.0	90.04	151.47	6,723.2	-646.1	-124.7	529.8	4.96
7,150.0	89.60	151.38	6,723.3	-673.3	-109.9	560.7	1.45
7,214.0	89.60	151.12	6,723.7	-729.4	-79.1	624.6	0.41
7,277.0	89.52	151.12	6,724.2	-784.5	-48.7	687.5	0.13
7,340.0	89.66	151.54	6,724.6	-839.8	-18.5	750.4	0.70
7,404.0	89.34	151.47	6,725.2	-896.1	12.1	814.3	0.51
7,467.0	89.08	151.21	6,726.1	-951.3	42.3	877.2	0.58
7,531.0	90.40	151.30	6,726.4	-1,007.5	73.1	941.1	2.07
7,594.0	90.40	151.21	6,725.9	-1,062.7	103.4	1,004.0	0.14
7,657.0	89.06	150.86	6,726.2	-1,117.8	133.9	1,066.9	2.20
7,721.0	89.34	152.09	6,727.1	-1,174.0	164.4	1,130.8	1.97
7,784.0	89.43	154.63	6,727.8	-1,230.3	192.7	1,193.7	4.03
7,848.0	89.50	154.86	6,728.4	-1,288.2	220.0	1,257.7	0.38
7,911.0	89.16	154.46	6,729.1	-1,345.2	246.9	1,320.7	0.83
7,975.0	90.84	154.72	6,729.1	-1,403.0	274.4	1,384.7	2.66
8,038.0	89.69	154.11	6,728.8	-1,459.8	301.6	1,447.7	2.07
8,101.0	89.08	154.37	6,729.5	-1,516.5	329.0	1,510.7	1.05
8,165.0	88.90	154.20	6,730.6	-1,574.2	356.8	1,574.7	0.39
8,228.0	90.13	154.90	6,731.2	-1,631.1	383.8	1,637.7	2.25
8,292.0	89.90	154.94	6,731.1	-1,689.0	411.0	1,701.7	0.36
8,355.0	89.78	155.16	6,731.3	-1,746.1	437.5	1,764.7	0.40
8,418.0	89.50	154.88	6,731.7	-1,803.2	464.1	1,827.7	0.63
8,482.0	89.60	154.21	6,732.2	-1,861.0	491.6	1,891.7	1.06
8,545.0	88.90	153.49	6,733.0	-1,917.6	519.4	1,954.7	1.59
8,608.0	90.31	154.90	6,733.5	-1,974.3	546.8	2,017.7	3.17
8,672.0	90.87	155.41	6,732.8	-2,032.4	573.7	2,081.7	1.18
8,735.0	89.46	155.09	6,732.6	-2,089.6	600.1	2,144.7	2.30
8,799.0	89.23	155.48	6,733.4	-2,147.7	626.8	2,208.7	0.71
8,862.0	90.27	154.70	6,733.6	-2,204.8	653.4	2,271.7	2.06
8,926.0	90.27	155.21	6,733.3	-2,262.8	680.5	2,335.7	0.80
8,989.0	89.56	154.68	6,733.4	-2,319.9	707.1	2,398.7	1.41
9,052.0	89.23	153.81	6,734.1	-2,376.6	734.5	2,461.6	1.48
9,116.0	89.70	153.54	6,734.7	-2,434.0	762.9	2,525.6	0.85
9,179.0	88.93	153.74	6,735.5	-2,490.4	790.9	2,588.6	1.26
9,243.0	89.34	154.37	6,736.4	-2,548.0	818.9	2,652.6	1.17
9,306.0	90.75	153.40	6,736.4	-2,604.5	846.6	2,715.6	2.72
9,370.0	90.81	153.40	6,735.5	-2,661.8	875.3	2,779.6	0.09



17-06275

EOW Completion Report



Company:	Antero Resources	Local Co-ordinate Reference:	Well Mash Unit 2H
Project:	Doddridge County WV	TVD Reference:	Mash Unit 2H GL 1164' +25' RKB @ 1189.0usft
Site:	Nero Pad	MD Reference:	Mash Unit 2H GL 1164' +25' RKB @ 1189.0usft
Well:	Mash Unit 2H	North Reference:	Grid
Wellbore:	Original Wellpath	Survey Calculation Method:	Minimum Curvature
Design:	As Drilled	Database:	Oklahoma District

MD (usft)	Inc (°)	Azi (azimuth) (°)	TVD (usft)	N/S (usft)	E/W (usft)	V. Sec (usft)	DLeg (°/100usft)
9,433.0	90.37	153.99	6,734.8	-2,718.2	903.2	2,842.6	1.17
9,497.0	90.40	153.58	6,734.4	-2,775.7	931.4	2,906.6	0.64
9,560.0	90.17	153.55	6,734.1	-2,832.1	959.5	2,969.6	0.37
9,623.0	90.10	154.53	6,734.0	-2,888.7	987.1	3,032.6	1.56
9,687.0	89.87	154.98	6,734.0	-2,946.6	1,014.4	3,096.6	0.79
9,750.0	89.66	155.05	6,734.2	-3,003.7	1,041.0	3,159.6	0.35
9,814.0	89.46	155.84	6,734.7	-3,061.9	1,067.6	3,223.5	1.27
9,877.0	89.08	156.48	6,735.5	-3,119.5	1,093.0	3,286.5	1.18
9,940.0	89.66	156.43	6,736.2	-3,177.3	1,118.2	3,349.5	0.92
9,972.0	89.53	156.27	6,736.4	-3,206.6	1,131.0	3,381.5	0.64
10,035.0	89.83	155.26	6,736.8	-3,264.0	1,156.9	3,444.4	1.67
10,067.0	89.60	155.34	6,737.0	-3,293.1	1,170.3	3,476.4	0.76
10,131.0	89.09	155.83	6,737.7	-3,351.4	1,196.7	3,540.4	1.11
10,162.0	88.99	155.78	6,738.2	-3,379.7	1,209.4	3,571.4	0.36
10,226.0	90.13	155.64	6,738.7	-3,438.0	1,235.7	3,635.4	1.79
10,257.0	90.31	155.43	6,738.6	-3,466.2	1,248.6	3,666.4	0.89
10,321.0	89.90	156.15	6,738.5	-3,524.6	1,274.8	3,730.4	1.29
10,353.0	89.69	156.30	6,738.6	-3,553.9	1,287.7	3,762.4	0.81
10,416.0	89.60	156.14	6,739.0	-3,611.5	1,313.1	3,825.3	0.29
10,511.0	90.13	154.34	6,739.2	-3,697.8	1,352.9	3,920.3	1.98
10,543.0	90.34	153.71	6,739.1	-3,726.5	1,366.9	3,952.3	2.08
10,575.0	89.60	153.23	6,739.1	-3,755.2	1,381.2	3,984.3	2.76
10,638.0	89.25	153.67	6,739.7	-3,811.5	1,409.4	4,047.3	0.89
10,702.0	88.79	153.88	6,740.8	-3,868.9	1,437.7	4,111.3	0.79
10,733.0	88.52	153.53	6,741.5	-3,896.7	1,451.4	4,142.3	1.43
10,797.0	88.86	154.03	6,743.0	-3,954.1	1,479.7	4,206.2	0.94
10,829.0	88.72	154.48	6,743.7	-3,982.9	1,493.6	4,238.2	1.47
10,892.0	88.49	154.78	6,745.2	-4,039.8	1,520.5	4,301.2	0.60
10,924.0	88.82	155.62	6,746.0	-4,068.9	1,534.0	4,333.2	2.82
10,987.0	88.49	154.86	6,747.4	-4,126.1	1,560.3	4,396.2	1.31
11,019.0	88.62	154.68	6,748.2	-4,155.0	1,574.0	4,428.2	0.69
11,082.0	90.23	154.85	6,748.9	-4,212.0	1,600.8	4,491.2	2.57
11,114.0	90.07	154.41	6,748.8	-4,240.9	1,614.5	4,523.2	1.46
11,177.0	89.78	154.20	6,748.9	-4,297.7	1,641.9	4,586.2	0.57
11,209.0	90.13	154.28	6,748.9	-4,326.5	1,655.8	4,618.2	1.12
11,272.0	89.50	154.75	6,749.1	-4,383.4	1,682.9	4,681.2	1.25
11,304.0	89.33	154.32	6,749.4	-4,412.3	1,696.6	4,713.2	1.44
11,368.0	89.23	154.99	6,750.2	-4,470.1	1,724.0	4,777.2	1.06
11,399.0	89.19	155.12	6,750.7	-4,498.2	1,737.1	4,808.2	0.44
11,463.0	88.79	153.61	6,751.8	-4,555.9	1,764.8	4,872.1	2.44
11,494.0	88.55	152.73	6,752.5	-4,583.5	1,778.8	4,903.1	2.94
11,555.0	89.52	153.14	6,753.5	-4,637.8	1,806.5	4,964.1	1.73
11,585.0	89.56	153.35	6,753.8	-4,664.6	1,820.0	4,994.1	0.71
11,645.0	89.30	153.57	6,754.4	-4,718.3	1,846.8	5,054.1	0.57



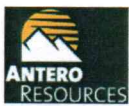
17-06275

EOW Completion Report



Company:	Antero Resources	Local Co-ordinate Reference:	Well Mash Unit 2H
Project:	Doddridge County WV	TVD Reference:	Mash Unit 2H GL 1164' +25' RKB @ 1189.0usft
Site:	Nero Pad	MD Reference:	Mash Unit 2H GL 1164' +25' RKB @ 1189.0usft
Well:	Mash Unit 2H	North Reference:	Grid
Wellbore:	Original Wellpath	Survey Calculation Method:	Minimum Curvature
Design:	As Drilled	Database:	Oklahoma District

Survey								
MD (usft)	Inc (°)	Azi (azimuth) (°)	TVD (usft)	N/S (usft)	E/W (usft)	V. Sec (usft)	DLeg (°/100usft)	
11,675.0	89.16	153.54	6,754.8	-4,745.2	1,860.2	5,084.1	0.48	
11,736.0	88.96	153.19	6,755.8	-4,799.7	1,887.5	5,145.0	0.66	
11,765.0	89.93	152.92	6,756.1	-4,825.5	1,900.7	5,174.0	3.47	
11,826.0	89.87	152.18	6,756.2	-4,879.7	1,928.8	5,235.0	1.22	
11,856.0	89.70	151.51	6,756.3	-4,906.1	1,942.9	5,265.0	2.30	
11,917.0	88.83	151.70	6,757.1	-4,959.8	1,971.9	5,325.9	1.46	
11,947.0	88.62	151.24	6,757.7	-4,986.1	1,986.3	5,355.8	1.69	
12,006.0	88.99	152.05	6,759.0	-5,038.0	2,014.3	5,414.7	1.51	
12,037.0	89.09	152.53	6,759.5	-5,065.5	2,028.7	5,445.7	1.58	
12,097.0	90.24	154.47	6,759.8	-5,119.2	2,055.5	5,505.7	3.76	
12,127.0	90.23	155.49	6,759.7	-5,146.4	2,068.2	5,535.7	3.40	
12,188.0	89.87	155.34	6,759.6	-5,201.8	2,093.5	5,596.7	0.64	
12,218.0	89.76	155.52	6,759.7	-5,229.1	2,106.0	5,626.7	0.70	
12,278.0	89.56	155.50	6,760.1	-5,283.7	2,130.9	5,686.7	0.33	
12,308.0	89.56	155.93	6,760.3	-5,311.1	2,143.2	5,716.7	1.43	
12,368.0	89.53	156.12	6,760.8	-5,365.9	2,167.6	5,776.6	0.32	
12,398.0	89.43	156.20	6,761.1	-5,393.3	2,179.7	5,806.6	0.43	
12,457.0	89.33	156.87	6,761.7	-5,447.4	2,203.2	5,865.6	1.15	
12,487.0	89.09	157.06	6,762.1	-5,475.0	2,215.0	5,895.6	1.02	
12,547.0	89.63	156.50	6,762.8	-5,530.2	2,238.6	5,955.5	1.30	
12,578.0	89.63	156.39	6,763.0	-5,558.6	2,251.0	5,986.5	0.35	
12,641.0	89.80	155.74	6,763.3	-5,616.2	2,276.6	6,049.5	1.07	
12,673.0	90.07	154.68	6,763.4	-5,645.2	2,290.0	6,081.5	3.42	
12,736.0	89.93	154.27	6,763.4	-5,702.1	2,317.1	6,144.5	0.69	
12,768.0	89.63	154.14	6,763.5	-5,730.9	2,331.0	6,176.5	1.02	
12,831.0	89.13	154.11	6,764.2	-5,787.6	2,358.5	6,239.5	0.80	
12,863.0	89.09	153.97	6,764.7	-5,816.3	2,372.5	6,271.5	0.45	
12,895.0	89.13	154.11	6,765.2	-5,845.1	2,386.5	6,303.4	0.45	
12,958.0	88.46	155.51	6,766.5	-5,902.1	2,413.4	6,366.4	2.46	
13,020.0	90.03	154.42	6,767.3	-5,958.3	2,439.6	6,428.4	3.08	
13,052.0	89.87	154.46	6,767.3	-5,987.1	2,453.4	6,460.4	0.52	
13,115.0	90.03	154.99	6,767.4	-6,044.1	2,480.3	6,523.4	0.88	
13,147.0	90.22	155.07	6,767.3	-6,073.1	2,493.8	6,555.4	0.64	
13,210.0	89.08	154.02	6,767.7	-6,130.0	2,520.9	6,618.4	2.46	
13,242.0	89.25	154.55	6,768.2	-6,158.8	2,534.8	6,650.4	1.74	
13,306.0	89.53	154.84	6,768.8	-6,216.7	2,562.1	6,714.4	0.63	
13,337.0	89.78	154.99	6,769.0	-6,244.7	2,575.3	6,745.4	0.94	
13,401.0	90.50	155.44	6,768.9	-6,302.8	2,602.1	6,809.4	1.33	
13,433.0	90.75	156.39	6,768.5	-6,332.1	2,615.1	6,841.4	3.07	
13,496.0	90.13	155.07	6,768.0	-6,389.5	2,641.0	6,904.4	2.31	
13,528.0	90.04	155.25	6,768.0	-6,418.5	2,654.5	6,936.4	0.63	
13,591.0	89.52	153.32	6,768.2	-6,475.3	2,681.8	6,999.4	3.17	
13,623.0	89.43	152.70	6,768.5	-6,503.8	2,696.3	7,031.4	1.96	
13,686.0	89.97	153.43	6,768.9	-6,560.0	2,724.9	7,094.3	1.44	



17-06275

EOW Completion Report



Company:	Antero Resources	Local Co-ordinate Reference:	Well Mash Unit 2H
Project:	Doddridge County WV	TVD Reference:	Mash Unit 2H GL 1164' +25' RKB @ 1189.0usft
Site:	Nero Pad	MD Reference:	Mash Unit 2H GL 1164' +25' RKB @ 1189.0usft
Well:	Mash Unit 2H	North Reference:	Grid
Wellbore:	Original Wellpath	Survey Calculation Method:	Minimum Curvature
Design:	As Drilled	Database:	Oklahoma District

Survey

MD (usft)	Inc (°)	Azi (azimuth) (°)	TVD (usft)	N/S (usft)	E/W (usft)	V. Sec (usft)	DLeg (°/100usft)
13,718.0	90.22	153.32	6,768.8	-6,588.6	2,739.2	7,126.3	0.85
13,781.0	90.75	153.49	6,768.3	-6,644.9	2,767.4	7,189.3	0.88
13,813.0	90.13	153.05	6,768.0	-6,673.5	2,781.8	7,221.3	2.38
13,877.0	90.47	152.96	6,767.7	-6,730.5	2,810.9	7,285.3	0.55
13,908.0	90.84	153.23	6,767.3	-6,758.2	2,824.9	7,316.3	1.48
13,972.0	89.96	153.67	6,766.9	-6,815.4	2,853.5	7,380.3	1.54
14,003.0	89.78	153.76	6,767.0	-6,843.2	2,867.2	7,411.2	0.65
14,067.0	90.04	154.20	6,767.1	-6,900.7	2,895.3	7,475.2	0.80
14,099.0	90.22	154.28	6,767.0	-6,929.5	2,909.2	7,507.2	0.62
14,162.0	90.57	154.64	6,766.6	-6,986.4	2,936.4	7,570.2	0.80
14,194.0	90.75	154.11	6,766.2	-7,015.2	2,950.2	7,602.2	1.75
14,257.0	89.93	154.59	6,765.8	-7,072.0	2,977.5	7,665.2	1.51
14,289.0	89.87	154.00	6,765.9	-7,100.8	2,991.4	7,697.2	1.85
14,353.0	90.27	154.79	6,765.8	-7,158.6	3,019.0	7,761.2	1.38
14,384.0	90.40	154.11	6,765.6	-7,186.5	3,032.4	7,792.2	2.23
14,448.0	90.75	154.55	6,765.0	-7,244.2	3,060.1	7,856.2	0.88
14,511.0	89.87	154.28	6,764.6	-7,301.0	3,087.3	7,919.2	1.46
14,575.0	89.60	155.43	6,764.9	-7,359.0	3,114.5	7,983.2	1.85
14,638.0	89.70	155.66	6,765.3	-7,416.3	3,140.6	8,046.2	0.40
14,670.0	89.78	156.13	6,765.4	-7,445.5	3,153.7	8,078.2	1.49
14,733.0	90.04	155.95	6,765.5	-7,503.1	3,179.2	8,141.2	0.50
14,765.0	90.31	156.39	6,765.4	-7,532.4	3,192.2	8,173.2	1.61
14,828.0	90.57	155.43	6,765.0	-7,589.9	3,217.9	8,236.2	1.58
14,860.0	90.92	155.95	6,764.5	-7,619.0	3,231.1	8,268.1	1.96
14,924.0	89.69	156.30	6,764.2	-7,677.6	3,257.0	8,332.1	2.00
14,955.0	89.43	156.22	6,764.4	-7,705.9	3,269.4	8,363.1	0.88
15,019.0	89.87	155.34	6,764.8	-7,764.3	3,295.7	8,427.1	1.54
15,050.0	89.87	154.55	6,764.9	-7,792.4	3,308.8	8,458.1	2.55
15,114.0	90.13	155.16	6,764.9	-7,850.3	3,336.0	8,522.1	1.04
15,145.0	90.31	154.72	6,764.8	-7,878.4	3,349.1	8,553.1	1.53
15,209.0	90.40	154.81	6,764.4	-7,936.3	3,376.4	8,617.1	0.20
15,240.0	90.57	154.90	6,764.1	-7,964.3	3,389.6	8,648.1	0.62
15,304.0	90.31	155.43	6,763.6	-8,022.4	3,416.5	8,712.1	0.92
15,336.0	90.13	155.34	6,763.5	-8,051.5	3,429.8	8,744.1	0.63
15,399.0	89.80	154.81	6,763.6	-8,108.6	3,456.4	8,807.1	0.99
15,431.0	89.87	154.37	6,763.6	-8,137.6	3,470.1	8,839.1	1.39
15,494.0	89.97	154.20	6,763.7	-8,194.3	3,497.4	8,902.1	0.31
15,526.0	90.13	154.11	6,763.7	-8,223.1	3,511.4	8,934.1	0.57
15,590.0	90.57	154.90	6,763.3	-8,280.9	3,538.9	8,998.1	1.41
15,621.0	90.75	154.99	6,763.0	-8,309.0	3,552.0	9,029.1	0.65
15,685.0	89.96	154.28	6,762.6	-8,366.8	3,579.5	9,093.1	1.66
15,716.0	89.69	154.81	6,762.7	-8,394.8	3,592.8	9,124.1	1.92
15,780.0	89.87	154.46	6,762.9	-8,452.6	3,620.2	9,188.1	0.61
15,812.0	90.13	154.90	6,762.9	-8,481.5	3,633.9	9,220.1	1.60



17.06275

EOW Completion Report



Company:	Antero Resources	Local Co-ordinate Reference:	Well Mash Unit 2H
Project:	Doddridge County WV	TVD Reference:	Mash Unit 2H GL 1164' +25' RKB @ 1189.0usft
Site:	Nero Pad	MD Reference:	Mash Unit 2H GL 1164' +25' RKB @ 1189.0usft
Well:	Mash Unit 2H	North Reference:	Grid
Wellbore:	Original Wellpath	Survey Calculation Method:	Minimum Curvature
Design:	As Drilled	Database:	Oklahoma District

Survey

MD (usft)	Inc (°)	Azi (azimuth) (°)	TVD (usft)	N/S (usft)	E/W (usft)	V. Sec (usft)	DLeg (°/100usft)
15,875.0	90.22	154.55	6,762.7	-8,538.5	3,660.8	9,283.1	0.57
15,907.0	90.31	153.93	6,762.6	-8,567.3	3,674.7	9,315.1	1.96
15,970.0	90.48	153.49	6,762.1	-8,623.8	3,702.6	9,378.0	0.75
16,002.0	90.64	154.02	6,761.8	-8,652.5	3,716.7	9,410.0	1.73
16,066.0	90.75	154.37	6,761.0	-8,710.1	3,744.6	9,474.0	0.57
16,097.0	90.75	153.76	6,760.6	-8,738.0	3,758.2	9,505.0	1.97
16,161.0	90.31	154.02	6,760.0	-8,795.5	3,786.3	9,569.0	0.80
16,192.0	90.13	153.76	6,759.9	-8,823.3	3,800.0	9,600.0	1.02
16,256.0	90.31	153.76	6,759.7	-8,880.7	3,828.3	9,664.0	0.28
16,288.0	90.48	153.67	6,759.5	-8,909.4	3,842.4	9,696.0	0.60
16,352.0	90.66	153.84	6,758.8	-8,966.8	3,870.7	9,760.0	0.39
16,383.0	90.31	152.97	6,758.6	-8,994.5	3,884.6	9,791.0	3.02
16,447.0	90.66	152.61	6,758.0	-9,051.4	3,913.9	9,855.0	0.78
16,511.0	90.92	153.05	6,757.1	-9,108.4	3,943.1	9,918.9	0.80
16,574.0	89.96	152.97	6,756.6	-9,164.5	3,971.7	9,981.9	1.53
16,637.0	90.40	154.02	6,756.4	-9,220.9	3,999.8	10,044.9	1.81
16,669.0	90.48	154.55	6,756.2	-9,249.7	4,013.7	10,076.9	1.67
16,733.0	89.96	153.76	6,756.0	-9,307.3	4,041.6	10,140.9	1.48
16,764.0	89.69	154.20	6,756.1	-9,335.2	4,055.2	10,171.9	1.67
16,828.0	89.87	153.58	6,756.3	-9,392.6	4,083.4	10,235.9	1.01
16,860.0	88.99	154.20	6,756.6	-9,421.4	4,097.4	10,267.9	3.36
16,924.0	89.08	154.99	6,757.7	-9,479.2	4,124.9	10,331.9	1.24
16,955.0	89.34	154.64	6,758.1	-9,507.2	4,138.1	10,362.9	1.41
17,019.0	89.43	154.99	6,758.8	-9,565.1	4,165.3	10,426.9	0.56
17,051.0	89.43	155.16	6,759.1	-9,594.1	4,178.8	10,458.9	0.53
17,103.0	91.45	155.87	6,758.7	-9,641.5	4,200.3	10,510.8	4.12
17,158.0	91.45	155.87	6,757.3	-9,691.6	4,222.8	10,565.8	0.00

Design Annotations

Measured Depth (usft)	Vertical Depth (usft)	Local Coordinates		Comment
		+N/-S (usft)	+E/-W (usft)	
6,360.0	6,344.1	-83.3	-145.8	Sycamore
6,561.0	6,512.0	-172.1	-208.1	Middlesex
6,739.0	6,629.5	-302.6	-228.3	Burkett
6,798.0	6,658.3	-354.0	-225.5	Tully
6,866.0	6,684.1	-416.1	-215.7	Hamilton
6,888.0	6,691.2	-436.4	-211.1	Marcellus

Checked By: _____ Approved By: _____ Date: _____