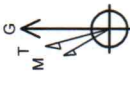




Antero Resources
Gavin Unit 1H
Doddridge County WV
Northing: 14277820.48
Easting: 1725231.45
As Drilled

17-06281



From True North to Grid, Subtract 8.70°
 To convert Magnetic North to Grid, Subtract 0.19°
 Magnetic North - 8.70°
 Magnetic Field Strength: 52393.1nT
 Dip Angle: 66.90°
 Date: 02/03/2013
 Model: IGRF2010

WELL DETAILS: Gavin Unit 1H
 Ground Level: 1237.0
 Easting: 1725231.45
 Northing: 14277820.48
 Longitude: 80° 42' 0.417" W
 Latitude: 39° 19' 4.405" N

PROJECT DETAILS: Doddridge County WV
 Geodetic System: Universal Transverse Mercator (US Survey Feet)
 Datum: NAD 1983 (NADCON CONUS)
 Ellipsoid: Clarke 1866
 Zone: Zone 17N (84 W to 78 W)
 System Datum: Mean Sea Level



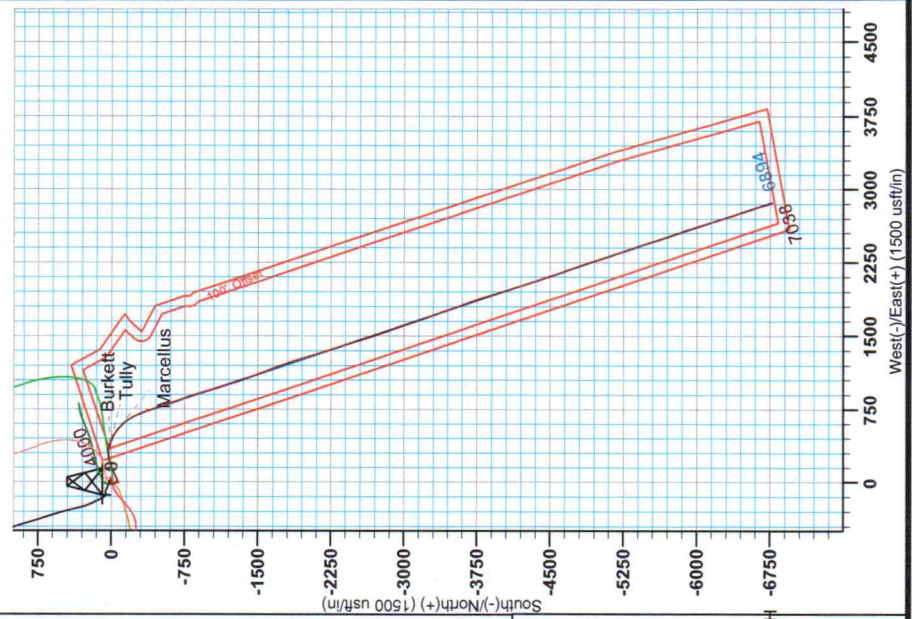
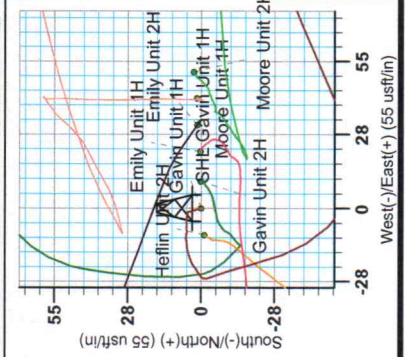
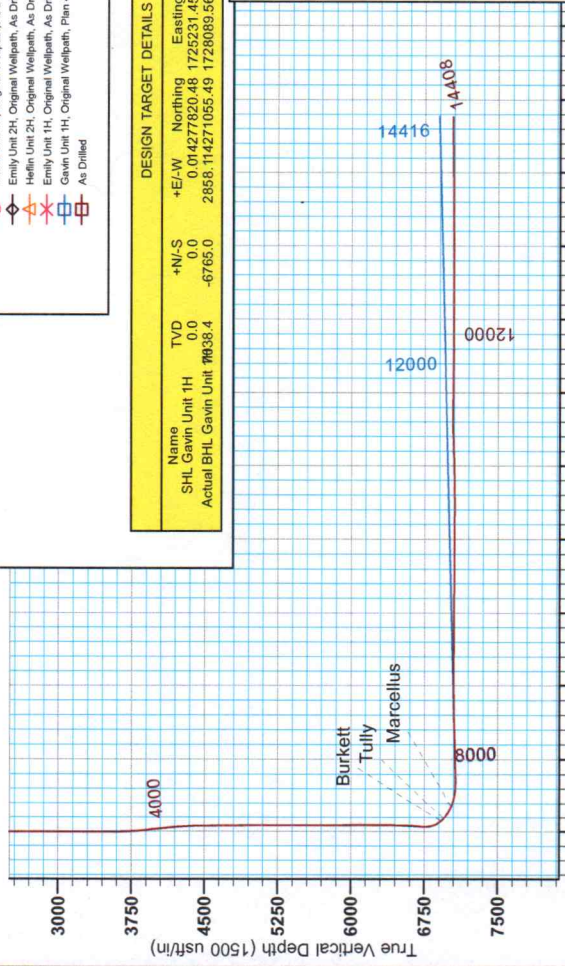
Genie Lightfoot
 Scientific Drilling
 421 South Eagle Lane
 Oklahoma City Oklahoma
 405-787-3663

LEGEND

- Move Unit 2H, Original Wellpath, As Drilled V0
- Gavin Unit 2H, Original Wellpath, As Drilled V0
- Moore Unit 1H, Original Wellpath, As Drilled V0
- Emily Unit 2H, Original Wellpath, As Drilled V0
- Helin Unit 2H, Original Wellpath, As Drilled V0
- Emily Unit 1H, Original Wellpath, As Drilled V0
- Gavin Unit 1H, Original Wellpath, Plan 4 V0
- As Drilled

DESIGN TARGET DETAILS

Name	TVD	+N/-S	+E/-W	Northing	Easting	Latitude	Longitude
SHL Gavin Unit 1H	0.0	0.0	0.0	0.014277820.48	1725231.45	39° 19' 4.405" N	80° 42' 0.417" W
Actual BHL Gavin Unit 1H	79838.4	-6765.0	-6765.0	2858.114271055.49	1728089.6699°	17° 57' 42.0" N	41° 24' 33.2" W



05/06/2022

17-06281



Antero Resources

**Doddridge County WV
Moore/Emily/Gavin/Heflin Pad
Gavin Unit 1H
Original Wellpath**

Design: As Drilled

EOW Completion Report

29 October, 2013



05/06/2022

17-06281



EOW Completion Report



Company:	Antero Resources	Local Co-ordinate Reference:	Well Gavin Unit 1H
Project:	Doddridge County WV	TVD Reference:	Gavin 1H 1237 GL + 25 KB @ 1262.0usft
Site:	Moore/Emily/Gavin/Heflin Pad	MD Reference:	Gavin 1H 1237 GL + 25 KB @ 1262.0usft
Well:	Gavin Unit 1H	North Reference:	Grid
Wellbore:	Original Wellpath	Survey Calculation Method:	Minimum Curvature
Design:	As Drilled	Database:	Oklahoma District

Project	Doddridge County WV, McClellan District		
Map System:	Universal Transverse Mercator (US Survey Fee	System Datum:	Mean Sea Level
Geo Datum:	NAD 1927 (NADCON CONUS)		
Map Zone:	Zone 17N (84 W to 78 W)		

Site Moore/Emily/Gavin/Heflin Pad

Site Position:		Northing:	14,277,823.32 usft	Latitude:	39° 19' 4.431 N
From:	Map	Easting:	1,725,282.39 usft	Longitude:	80° 41' 59.768 W
Position Uncertainty:	0.0 usft	Slot Radius:	13-3/16"	Grid Convergence:	0.19 °

Well Gavin Unit 1H, Marcellus

Well Position	+N/-S	0.0 usft	Northing:	14,277,820.48 usft	Latitude:	39° 19' 4.405 N
	+E/-W	0.0 usft	Easting:	1,725,231.45 usft	Longitude:	80° 42' 0.417 W
Position Uncertainty		2.0 usft	Wellhead Elevation:	1,262.0 usft	Ground Level:	1,237.0 usft

Wellbore Original Wellpath

Magnetics	Model Name	Sample Date	Declination (°)	Dip Angle (°)	Field Strength (nT)
	IGRF2010	9/6/2013	-8.51	66.90	52,393

Design As Drilled

Audit Notes:

Version: 1.0 **Phase:** ACTUAL **Tie On Depth:** 0.0

Vertical Section:	Depth From (TVD) (usft)	+N/-S (usft)	+E/-W (usft)	Direction (°)
	0.0	0.0	0.0	161.55

Survey Program Date 10/29/2013

From (usft)	To (usft)	Survey (Wellbore)	Tool Name	Description
114.0	6,280.0	Survey #4 Def Gyro KOP (Original Wellpa	SDI Standard Keeper	Scientific Drilling Intl. Standard Wireline Keeper
6,341.0	14,408.0	Survey #5 MWD (Original Wellpath)	SDI MWD	Scientific Drilling Intl. MWD - Standard ver 1.0.1

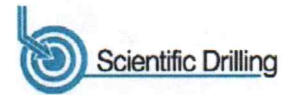
Survey

MD (usft)	Inc (°)	Azi (azimuth) (°)	TVD (usft)	N/S (usft)	E/W (usft)	V. Sec (usft)	DLeg (°/100usft)
0.0	0.00	0.00	0.0	0.0	0.0	0.0	0.00
114.0	1.05	341.26	114.0	1.0	-0.3	-1.0	0.92
214.0	0.62	344.10	214.0	2.4	-0.8	-2.5	0.43
314.0	0.52	339.27	314.0	3.3	-1.1	-3.5	0.11
414.0	0.32	356.41	414.0	4.0	-1.3	-4.2	0.23
514.0	0.18	16.13	514.0	4.5	-1.2	-4.6	0.16
614.0	0.05	223.51	614.0	4.6	-1.2	-4.7	0.23
714.0	0.10	329.06	714.0	4.6	-1.3	-4.8	0.12
814.0	0.01	64.00	814.0	4.7	-1.3	-4.9	0.10
914.0	0.11	351.91	914.0	4.8	-1.3	-5.0	0.11
1,014.0	0.24	302.82	1,014.0	5.0	-1.5	-5.2	0.19

17-06281



EOW Completion Report



Company:	Antero Resources	Local Co-ordinate Reference:	Well Gavin Unit 1H
Project:	Doddridge County WV	TVD Reference:	Gavin 1H 1237 GL + 25 KB @ 1262.0usft
Site:	Moore/Emily/Gavin/Heflin Pad	MD Reference:	Gavin 1H 1237 GL + 25 KB @ 1262.0usft
Well:	Gavin Unit 1H	North Reference:	Grid
Wellbore:	Original Wellpath	Survey Calculation Method:	Minimum Curvature
Design:	As Drilled	Database:	Oklahoma District

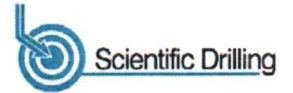
Survey

MD (usft)	Inc (°)	Azi (azimuth) (°)	TVD (usft)	N/S (usft)	E/W (usft)	V. Sec (usft)	DLeg (°/100usft)
1,114.0	0.30	271.12	1,114.0	5.1	-2.0	-5.5	0.16
1,214.0	0.52	288.51	1,214.0	5.3	-2.7	-5.8	0.25
1,314.0	0.64	272.05	1,314.0	5.4	-3.7	-6.3	0.20
1,414.0	0.79	270.96	1,414.0	5.5	-4.9	-6.7	0.15
1,514.0	0.66	272.74	1,513.9	5.5	-6.2	-7.2	0.13
1,614.0	0.77	263.52	1,613.9	5.5	-7.4	-7.5	0.16
1,714.0	0.77	274.52	1,713.9	5.4	-8.7	-7.9	0.15
1,814.0	0.70	279.55	1,813.9	5.6	-10.0	-8.5	0.10
1,914.0	0.72	269.20	1,913.9	5.7	-11.2	-8.9	0.13
2,014.0	0.82	255.51	2,013.9	5.5	-12.6	-9.2	0.21
2,114.0	0.77	272.96	2,113.9	5.3	-13.9	-9.5	0.25
2,214.0	0.80	253.85	2,213.9	5.2	-15.3	-9.8	0.26
2,314.0	0.78	260.13	2,313.9	4.9	-16.6	-9.9	0.09
2,414.0	0.77	247.62	2,413.9	4.5	-17.9	-9.9	0.17
2,514.0	0.76	257.39	2,513.9	4.1	-19.2	-10.0	0.13
2,614.0	0.66	243.09	2,613.9	3.7	-20.3	-9.9	0.20
2,714.0	0.63	236.17	2,713.8	3.1	-21.3	-9.7	0.08
2,814.0	0.48	235.78	2,813.8	2.6	-22.1	-9.5	0.15
2,914.0	0.45	236.08	2,913.8	2.1	-22.8	-9.2	0.03
3,014.0	0.48	234.10	3,013.8	1.7	-23.4	-9.0	0.03
3,114.0	0.42	238.65	3,113.8	1.2	-24.1	-8.8	0.07
3,214.0	0.40	233.29	3,213.8	0.8	-24.7	-8.6	0.04
3,314.0	0.29	238.12	3,313.8	0.5	-25.2	-8.4	0.11
3,414.0	0.33	231.00	3,413.8	0.2	-25.6	-8.3	0.06
3,514.0	0.29	220.13	3,513.8	-0.2	-26.0	-8.0	0.07
3,614.0	0.37	223.73	3,613.8	-0.6	-26.4	-7.8	0.08
3,714.0	1.49	174.18	3,713.8	-2.1	-26.5	-6.3	1.28
3,814.0	6.58	157.92	3,813.5	-8.8	-24.2	0.6	5.17
3,914.0	7.25	167.52	3,912.8	-20.2	-20.7	12.6	1.33
4,014.0	5.27	156.63	4,012.2	-30.6	-17.5	23.5	2.30
4,114.0	5.71	151.46	4,111.8	-39.2	-13.3	33.0	0.66
4,214.0	6.52	133.96	4,211.2	-47.5	-6.8	42.9	2.02
4,314.0	4.60	123.04	4,310.7	-53.6	0.6	51.1	2.18
4,414.0	1.00	157.98	4,410.6	-56.6	4.3	55.1	3.82
4,514.0	0.98	175.61	4,510.6	-58.3	4.7	56.8	0.30
4,614.0	0.88	190.22	4,610.6	-59.9	4.6	58.3	0.26
4,714.0	0.77	194.49	4,710.5	-61.3	4.3	59.5	0.13
4,814.0	0.73	201.90	4,810.5	-62.5	3.9	60.6	0.10
4,914.0	0.66	212.01	4,910.5	-63.6	3.4	61.4	0.14
5,014.0	0.66	213.03	5,010.5	-64.6	2.8	62.1	0.01
5,114.0	0.78	220.53	5,110.5	-65.6	2.0	62.9	0.15
5,214.0	0.79	219.04	5,210.5	-66.6	1.1	63.6	0.02
5,314.0	0.79	223.48	5,310.5	-67.7	0.2	64.3	0.06
5,414.0	0.93	235.81	5,410.5	-68.6	-0.9	64.8	0.23



17-06281

EOW Completion Report



Company:	Antero Resources	Local Co-ordinate Reference:	Well Gavin Unit 1H
Project:	Doddridge County WV	TVD Reference:	Gavin 1H 1237 GL + 25 KB @ 1262.0usft
Site:	Moore/Emily/Gavin/Heflin Pad	MD Reference:	Gavin 1H 1237 GL + 25 KB @ 1262.0usft
Well:	Gavin Unit 1H	North Reference:	Grid
Wellbore:	Original Wellpath	Survey Calculation Method:	Minimum Curvature
Design:	As Drilled	Database:	Oklahoma District

Survey								
MD (usft)	Inc (°)	Azi (azimuth) (°)	TVD (usft)	N/S (usft)	E/W (usft)	V. Sec (usft)	DLeg (°/100usft)	
5,514.0	1.05	252.61	5,510.5	-69.4	-2.5	65.0	0.31	
5,614.0	1.13	256.24	5,610.5	-69.9	-4.3	64.9	0.11	
5,714.0	1.26	256.77	5,710.4	-70.4	-6.3	64.7	0.13	
5,814.0	0.98	258.52	5,810.4	-70.8	-8.2	64.5	0.28	
5,914.0	0.70	254.29	5,910.4	-71.1	-9.7	64.4	0.29	
6,014.0	0.75	241.02	6,010.4	-71.6	-10.8	64.5	0.17	
6,114.0	0.62	233.81	6,110.4	-72.2	-11.8	64.8	0.16	
6,214.0	0.46	240.01	6,210.4	-72.8	-12.6	65.0	0.17	
6,280.0	0.50	229.48	6,276.4	-73.1	-13.1	65.2	0.15	
6,341.0	0.52	218.06	6,337.4	-73.5	-13.4	65.4	0.17	
6,373.0	1.54	88.61	6,369.4	-73.6	-13.1	65.6	5.98	
6,405.0	5.45	74.62	6,401.3	-73.2	-11.2	65.9	12.42	
6,438.0	9.66	69.50	6,434.0	-71.8	-7.1	65.8	12.91	
6,470.0	13.31	63.90	6,465.4	-69.2	-1.3	65.3	11.91	
6,502.0	16.49	64.10	6,496.3	-65.6	6.1	64.2	9.94	
6,534.0	19.69	65.13	6,526.7	-61.4	15.1	63.0	10.05	
6,566.0	23.67	65.54	6,556.4	-56.4	25.8	61.7	12.45	
6,598.0	27.62	66.34	6,585.3	-50.8	38.5	60.4	12.39	
6,630.0	31.36	67.11	6,613.1	-44.6	53.0	59.0	11.75	
6,663.0	35.65	67.45	6,640.6	-37.5	69.8	57.7	13.01	
6,695.0	38.95	67.24	6,666.1	-30.1	87.6	56.3	10.32	
6,727.0	42.23	67.80	6,690.4	-22.1	106.9	54.8	10.31	
6,759.0	45.53	67.81	6,713.4	-13.7	127.4	53.4	10.31	
6,791.0	48.95	68.03	6,735.2	-4.9	149.2	51.9	10.70	
6,823.0	50.85	67.81	6,755.8	4.3	171.9	50.3	5.96	
6,855.0	50.69	70.74	6,776.0	13.1	195.0	49.3	7.11	
6,888.0	51.00	76.56	6,796.9	20.3	219.6	50.3	13.71	
6,920.0	51.83	81.48	6,816.8	25.0	244.1	53.5	12.29	
6,952.0	52.57	87.01	6,836.5	27.5	269.3	59.1	13.85	
6,984.0	53.40	91.90	6,855.7	27.8	294.8	66.9	12.47	
7,016.0	54.17	95.98	6,874.6	26.0	320.5	76.8	10.56	
7,048.0	55.00	100.20	6,893.2	22.3	346.4	88.4	11.06	
7,080.0	55.87	104.53	6,911.4	16.7	372.1	101.9	11.47	
7,099.0	56.27	106.59	6,922.0	12.5	387.3	110.7	9.22	
Burkett								
7,113.0	56.58	108.09	6,929.7	9.0	398.4	117.6	9.22	
7,145.0	58.08	111.29	6,947.0	-0.1	423.8	134.2	9.63	
7,151.0	58.54	112.11	6,950.1	-2.0	428.5	137.5	13.94	
Tully								
7,177.0	60.59	115.58	6,963.3	-11.1	449.0	152.6	13.94	
7,209.0	62.10	119.01	6,978.6	-23.9	473.9	172.7	10.52	
7,241.0	63.66	122.08	6,993.2	-38.4	498.5	194.2	9.83	
7,273.0	65.88	125.55	7,006.9	-54.5	522.5	217.1	12.01	
7,305.0	68.67	130.34	7,019.2	-72.7	545.8	241.7	16.33	

17-06281



EOW Completion Report



Company:	Antero Resources	Local Co-ordinate Reference:	Well Gavin Unit 1H
Project:	Doddridge County WV	TVD Reference:	Gavin 1H 1237 GL + 25 KB @ 1262.0usft
Site:	Moore/Emily/Gavin/Heflin Pad	MD Reference:	Gavin 1H 1237 GL + 25 KB @ 1262.0usft
Well:	Gavin Unit 1H	North Reference:	Grid
Wellbore:	Original Wellpath	Survey Calculation Method:	Minimum Curvature
Design:	As Drilled	Database:	Oklahoma District

Survey								
MD (usft)	Inc (°)	Azi (azimuth) (°)	TVD (usft)	N/S (usft)	E/W (usft)	V. Sec (usft)	DLeg (°/100usft)	
7,331.0	70.32	133.84	7,028.4	-89.0	563.8	262.9	14.12	
Marcellus								
7,337.0	70.71	134.64	7,030.4	-92.9	567.9	267.9	14.12	
7,370.0	72.42	137.64	7,040.8	-115.5	589.6	296.2	10.06	
7,402.0	74.21	140.34	7,050.0	-138.6	609.7	324.5	9.83	
7,434.0	77.48	144.20	7,057.8	-163.2	628.6	353.7	15.53	
7,466.0	80.72	147.31	7,063.9	-189.2	646.3	384.0	13.91	
7,498.0	83.48	150.20	7,068.3	-216.2	662.8	414.9	12.43	
7,593.0	91.28	159.73	7,072.6	-302.1	702.8	509.0	12.95	
7,689.0	91.28	159.79	7,070.5	-392.1	736.0	604.9	0.06	
7,786.0	90.67	160.87	7,068.8	-483.5	768.7	701.9	1.28	
7,882.0	90.13	159.70	7,068.1	-573.8	801.0	797.8	1.34	
7,978.0	92.28	161.86	7,066.1	-664.4	832.6	893.8	3.17	
8,074.0	93.36	160.47	7,061.4	-755.2	863.6	989.7	1.83	
8,164.0	91.34	163.43	7,057.7	-840.7	891.4	1,079.6	3.98	
8,255.0	90.07	163.19	7,056.6	-927.8	917.6	1,170.5	1.42	
8,345.0	91.34	163.80	7,055.5	-1,014.1	943.1	1,260.5	1.57	
8,436.0	88.89	160.38	7,055.3	-1,100.7	971.1	1,351.4	4.62	
8,526.0	91.34	163.67	7,055.1	-1,186.3	998.9	1,441.4	4.56	
8,617.0	90.47	162.04	7,053.7	-1,273.2	1,025.7	1,532.4	2.03	
8,708.0	89.30	160.36	7,053.9	-1,359.4	1,055.0	1,623.4	2.25	
8,799.0	90.92	160.67	7,053.7	-1,445.1	1,085.4	1,714.4	1.81	
8,889.0	91.04	159.44	7,052.2	-1,529.7	1,116.1	1,804.3	1.37	
8,980.0	89.36	157.18	7,051.8	-1,614.3	1,149.7	1,895.2	3.09	
9,070.0	90.30	159.61	7,052.1	-1,697.9	1,182.9	1,985.0	2.89	
9,161.0	89.06	162.12	7,052.6	-1,783.9	1,212.7	2,076.0	3.08	
9,257.0	88.73	162.50	7,054.5	-1,875.3	1,241.8	2,172.0	0.52	
9,353.0	89.93	164.90	7,055.6	-1,967.5	1,268.8	2,267.9	2.79	
9,450.0	90.30	163.17	7,055.4	-2,060.7	1,295.5	2,364.8	1.82	
9,546.0	89.16	161.33	7,055.8	-2,152.2	1,324.7	2,460.8	2.25	
9,643.0	90.17	162.49	7,056.4	-2,244.4	1,354.8	2,557.8	1.59	
9,739.0	89.40	161.61	7,056.8	-2,335.7	1,384.4	2,653.8	1.22	
9,835.0	89.97	162.60	7,057.3	-2,427.0	1,413.9	2,749.8	1.19	
9,931.0	90.74	163.46	7,056.7	-2,518.8	1,441.9	2,845.7	1.20	
10,028.0	90.57	163.11	7,055.6	-2,611.7	1,469.8	2,942.7	0.40	
10,124.0	88.96	161.30	7,056.0	-2,703.1	1,499.2	3,038.7	2.52	
10,220.0	88.89	160.61	7,057.8	-2,793.9	1,530.5	3,134.6	0.72	
10,316.0	88.93	160.00	7,059.6	-2,884.2	1,562.8	3,230.6	0.64	
10,412.0	89.83	161.19	7,060.7	-2,974.8	1,594.7	3,326.6	1.55	
10,509.0	92.33	162.42	7,058.8	-3,066.9	1,625.0	3,423.5	2.87	
10,605.0	90.07	160.90	7,056.8	-3,158.0	1,655.2	3,519.5	2.84	
10,702.0	90.07	159.51	7,056.7	-3,249.3	1,688.1	3,616.5	1.43	
10,798.0	91.61	160.44	7,055.3	-3,339.4	1,720.9	3,712.4	1.87	
10,894.0	91.71	160.41	7,052.5	-3,429.9	1,753.1	3,808.4	0.11	

17-06281



EOW Completion Report



Company:	Antero Resources	Local Co-ordinate Reference:	Well Gavin Unit 1H
Project:	Doddridge County WV	TVD Reference:	Gavin 1H 1237 GL + 25 KB @ 1262.0usft
Site:	Moore/Emily/Gavin/Heflin Pad	MD Reference:	Gavin 1H 1237 GL + 25 KB @ 1262.0usft
Well:	Gavin Unit 1H	North Reference:	Grid
Wellbore:	Original Wellpath	Survey Calculation Method:	Minimum Curvature
Design:	As Drilled	Database:	Oklahoma District

Survey

MD (usft)	Inc (°)	Azi (azimuth) (°)	TVD (usft)	N/S (usft)	E/W (usft)	V. Sec (usft)	DLeg (°/100usft)
10,990.0	92.65	161.81	7,048.9	-3,520.6	1,784.1	3,904.3	1.76
11,087.0	91.85	160.70	7,045.1	-3,612.4	1,815.3	4,001.2	1.41
11,183.0	90.30	160.90	7,043.2	-3,703.0	1,846.9	4,097.2	1.63
11,280.0	90.20	162.26	7,042.8	-3,795.1	1,877.5	4,194.2	1.41
11,376.0	89.77	161.89	7,042.9	-3,886.4	1,907.0	4,290.2	0.59
11,472.0	89.73	160.99	7,043.3	-3,977.4	1,937.6	4,386.2	0.94
11,569.0	89.73	162.88	7,043.7	-4,069.6	1,967.7	4,483.2	1.95
11,665.0	90.24	163.71	7,043.8	-4,161.6	1,995.3	4,579.1	1.01
11,761.0	88.99	161.20	7,044.4	-4,253.1	2,024.2	4,675.1	2.92
11,858.0	88.52	161.42	7,046.5	-4,345.0	2,055.3	4,772.1	0.53
11,954.0	89.20	161.85	7,048.4	-4,436.1	2,085.5	4,868.1	0.84
12,051.0	90.40	161.75	7,048.8	-4,528.2	2,115.8	4,965.1	1.24
12,147.0	89.80	161.77	7,048.6	-4,619.4	2,145.9	5,061.1	0.63
12,242.0	90.44	160.15	7,048.4	-4,709.2	2,176.9	5,156.0	1.83
12,339.0	89.33	161.06	7,048.6	-4,800.7	2,209.1	5,253.0	1.48
12,435.0	89.66	161.11	7,049.4	-4,891.5	2,240.2	5,349.0	0.35
12,531.0	90.50	162.47	7,049.3	-4,982.7	2,270.2	5,445.0	1.67
12,628.0	91.34	161.90	7,047.7	-5,075.0	2,299.9	5,542.0	1.05
12,724.0	89.09	160.40	7,047.4	-5,165.8	2,330.9	5,638.0	2.82
12,821.0	90.20	161.35	7,048.0	-5,257.5	2,362.7	5,735.0	1.51
12,917.0	90.77	161.47	7,047.2	-5,348.5	2,393.3	5,831.0	0.61
13,013.0	89.77	161.93	7,046.7	-5,439.6	2,423.4	5,927.0	1.15
13,110.0	90.07	161.69	7,046.8	-5,531.8	2,453.7	6,024.0	0.40
13,206.0	90.30	162.47	7,046.5	-5,623.1	2,483.2	6,120.0	0.85
13,302.0	90.74	160.98	7,045.7	-5,714.3	2,513.3	6,216.0	1.62
13,399.0	90.81	161.59	7,044.4	-5,806.1	2,544.4	6,312.9	0.63
13,495.0	89.90	159.94	7,043.8	-5,896.8	2,576.1	6,408.9	1.96
13,592.0	90.12	162.42	7,043.7	-5,988.6	2,607.4	6,505.9	2.57
13,688.0	90.80	162.47	7,043.0	-6,080.1	2,636.3	6,601.9	0.71
13,785.0	90.91	160.84	7,041.5	-6,172.1	2,666.8	6,698.9	1.68
13,881.0	89.03	162.16	7,041.6	-6,263.2	2,697.3	6,794.9	2.39
13,977.0	91.21	163.26	7,041.4	-6,354.8	2,725.8	6,890.9	2.54
14,074.0	90.74	162.50	7,039.7	-6,447.5	2,754.4	6,987.8	0.92
14,170.0	90.81	161.73	7,038.4	-6,538.9	2,783.9	7,083.8	0.81
14,266.0	89.46	162.16	7,038.2	-6,630.1	2,813.6	7,179.8	1.48
14,352.0	90.20	161.55	7,038.5	-6,711.9	2,840.4	7,265.8	1.12
14,408.0	90.20	161.55	7,038.3	-6,765.0	2,858.1	7,321.8	0.00

17-06281



EOW Completion Report



Company:	Antero Resources	Local Co-ordinate Reference:	Well Gavin Unit 1H
Project:	Doddridge County WV	TVD Reference:	Gavin 1H 1237 GL + 25 KB @ 1262.0usft
Site:	Moore/Emily/Gavin/Heflin Pad	MD Reference:	Gavin 1H 1237 GL + 25 KB @ 1262.0usft
Well:	Gavin Unit 1H	North Reference:	Grid
Wellbore:	Original Wellpath	Survey Calculation Method:	Minimum Curvature
Design:	As Drilled	Database:	Oklahoma District

Design Annotations

Measured Depth (usft)	Vertical Depth (usft)	Local Coordinates		Comment
		+N/-S (usft)	+E/-W (usft)	
7,099.0	6,922.0	12.5	387.3	Burkett
7,151.0	6,950.1	-2.0	428.5	Tully
7,331.0	7,028.4	-89.0	563.8	Marcellus

Checked By: _____ Approved By: _____ Date: _____