



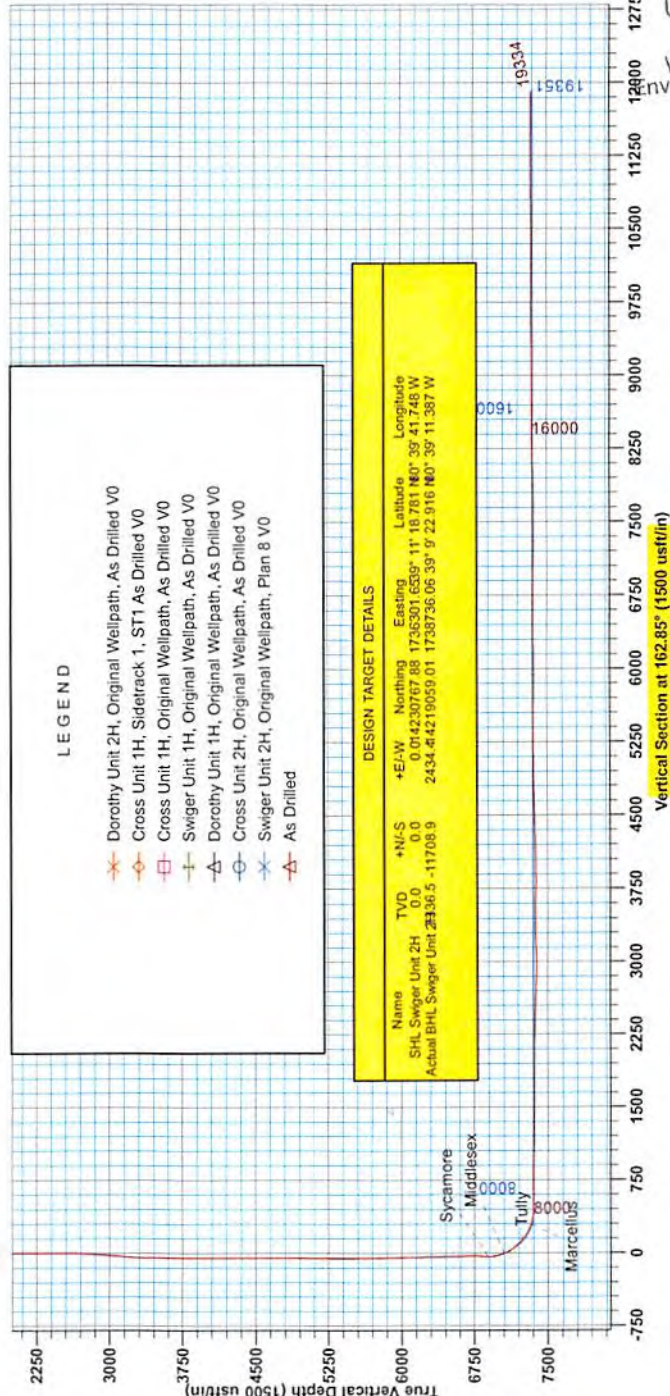
Swiger Unit 2H
Doddridge County WV
Northing: 14230767.89
Eastings: 1736301.65
As Drilled



WELL DETAILS Swiger Unit 2H
 Ground Level: 1332.0
 +N/S +E/W Northing Eastings
 0.0 0.0 14230767.89 1736301.65

Patherson 347 GL 1332 • KB 25 @ 1357.0uoft
 Gr. 1332.0

PROJECT DETAILS:Doddridge County WV
 Geodetic System: Universal Transverse Mercator (US Survey Feet)
 Datum: NAD 1927 (NADCON CONUS)
 Ellipsoid: Clarke 1866
 Zone: Zone 17N (84 W to 78 W)
 System Datum: Mean Sea Level



LEGEND

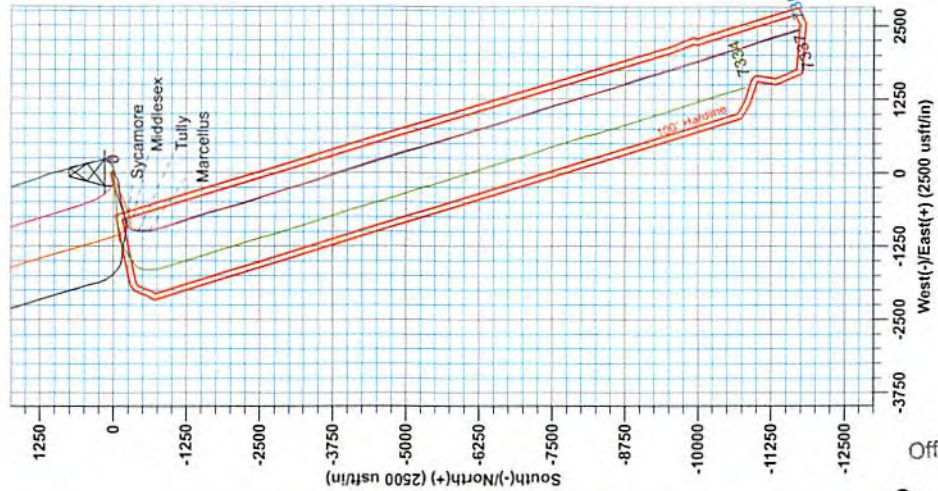
- ✕ Dorothy Unit 2H, Original Wellpath, As Drilled V0
- Cross Unit 1H, Siderack 1, ST1 As Drilled V0
- Cross Unit 1H, Original Wellpath, As Drilled V0
- ⊖ Swiger Unit 1H, Original Wellpath, As Drilled V0
- △ Dorothy Unit 1H, Original Wellpath, As Drilled V0
- ⊖ Cross Unit 2H, Original Wellpath, As Drilled V0
- ✕ Swiger Unit 2H, Original Wellpath, Plan 8 V0
- △ As Drilled

DESIGN TARGET DETAILS

Name	TVD	+N/S	+E/W	Northing	Eastings	Latitude	Longitude
SHL Swiger Unit 2H	0.0	0.0	0.0	14230767.89	1736301.65	39° 11' 18.781 80"	78° 39' 41.748 W
Actual BHL Swiger Unit	2336.5	-11708.9	2434.4	4219059.01	1738736.06	39° 52' 22.916 80"	78° 39' 11.387 W

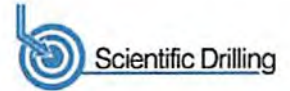
Azimuths to Grid North
 True North: -0.21°
 Magnetic North: -8.76°
 Magnetic Field
 Strength: 52170.65nT
 Dip Angle: 66.76°
 Date: 8/15/2014
 Model: BGGM2014

To convert Magnetic North to Grid, Subtract 8.75°
 To convert True North to Grid, Subtract 0.21°



RECEIVED
 Office of Oil and Gas
 OCT 30 2017
 WV Department of
 Environmental Protection

11/10/2017



Company:	Antero Resources	Local Co-ordinate Reference:	Well Swiger Unit 2H
Project:	Doddridge County WV	TVD Reference:	Patterson 347: GL 1332' + KB 25' @ 1357.0usft
Site:	Stewart Pad	MD Reference:	Patterson 347: GL 1332' + KB 25' @ 1357.0usft
Well:	Swiger Unit 2H	North Reference:	Grid
Wellbore:	Original Wellpath	Survey Calculation Method:	Minimum Curvature
Design:	As Drilled	Database:	Oklahoma District

Project	Doddridge County WV, McClellan District		
Map System:	Universal Transverse Mercator (US Survey Feet)	System Datum:	Mean Sea Level
Geo Datum:	NAD 1927 (NADCON CONUS)		
Map Zone:	Zone 17N (84 W to 78 W)		

Site	Stewart Pad				
Site Position:		Northing:	14,230,768.62 usft	Latitude:	39° 11' 18.788 N
From:	Map	Easting:	1,736,331.61 usft	Longitude:	80° 39' 41.367 W
Position Uncertainty:	0.0 usft	Slot Radius:	13-3/16"	Grid Convergence:	0.21 °

Well	Swiger Unit 2H, Marcellus					
Well Position	+N/-S	0.0 usft	Northing:	14,230,767.89 usft	Latitude:	39° 11' 18.781 N
	+E/-W	0.0 usft	Easting:	1,736,301.65 usft	Longitude:	80° 39' 41.748 W
Position Uncertainty	2.0 usft		Wellhead Elevation:	1,357.0 usft	Ground Level:	1,332.0 usft

Wellbore	Original Wellpath				
-----------------	-------------------	--	--	--	--

Magnetics	Model Name	Sample Date	Declination (°)	Dip Angle (°)	Field Strength (nT)
	BGGM2014	8/15/2014	-8.54	66.76	52,171

Design	As Drilled				
---------------	------------	--	--	--	--

Audit Notes:					
Version:	1.0	Phase:	ACTUAL	Tie On Depth:	0.0

Vertical Section:	Depth From (TVD) (usft)	+N/-S (usft)	+E/-W (usft)	Direction (°)
	0.0	0.0	0.0	162.85

Survey Program	Date 12/3/2014				
From (usft)	To (usft)	Survey (Wellbore)	Tool Name	Description	
39.0	6,182.0	Survey #5 Final Gyro (Original Wellpath)	SDI Standard Keeper	Scientific Drilling Intl. Standard Wireline Keeper	
6,182.0	19,334.0	Survey #6 SDI MWD (Original Wellpath)	SDI MWD	Scientific Drilling Intl. MWD - Standard ver 1.0.1	

MD (usft)	Inc (°)	Azi (azimuth) (°)	TVD (usft)	N/S (usft)	E/W (usft)	V. Sec (usft)	DLeg (°/100usft)
0.0	0.00	0.00	0.0	0.0	0.0	0.0	0.00
39.0	0.13	26.18	39.0	0.0	0.0	0.0	0.33
64.0	0.26	26.18	64.0	0.1	0.1	-0.1	0.52
89.0	0.39	26.18	89.0	0.2	0.1	-0.2	0.52
114.0	0.41	29.18	114.0	0.4	0.2	-0.3	0.12
139.0	0.39	26.14	139.0	0.6	0.3	-0.4	0.12
164.0	0.31	40.47	164.0	0.7	0.4	-0.5	0.47
189.0	0.24	59.94	189.0	0.8	0.5	-0.6	0.46
214.0	0.25	62.24	214.0	0.8	0.5	-0.6	0.06
239.0	0.18	65.59	239.0	0.9	0.6	-0.6	0.28
264.0	0.25	51.17	264.0	0.9	0.7	-0.7	0.35



EOW Completion Report



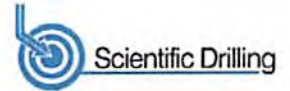
Company:	Antero Resources	Local Co-ordinate Reference:	Well Swiger Unit 2H
Project:	Doddridge County WV	TVD Reference:	Patterson 347: GL 1332' + KB 25' @ 1357.0usft
Site:	Stewart Pad	MD Reference:	Patterson 347: GL 1332' + KB 25' @ 1357.0usft
Well:	Swiger Unit 2H	North Reference:	Grid
Wellbore:	Original Wellpath	Survey Calculation Method:	Minimum Curvature
Design:	As Drilled	Database:	Oklahoma District

Survey								
MD (usft)	Inc (°)	Azi (azimuth) (°)	TVD (usft)	N/S (usft)	E/W (usft)	V. Sec (usft)	DLeg (°/100usft)	
289.0	0.24	39.76	289.0	1.0	0.8	-0.7	0.20	
314.0	0.20	58.59	314.0	1.0	0.9	-0.7	0.33	
339.0	0.20	57.91	339.0	1.1	0.9	-0.8	0.01	
364.0	0.05	110.05	364.0	1.1	1.0	-0.8	0.70	
389.0	0.18	133.32	389.0	1.1	1.0	-0.7	0.54	
414.0	0.17	142.77	414.0	1.0	1.1	-0.7	0.12	
439.0	0.16	136.87	439.0	1.0	1.1	-0.6	0.08	
464.0	0.18	148.78	464.0	0.9	1.2	-0.5	0.16	
489.0	0.24	145.47	489.0	0.8	1.2	-0.4	0.24	
514.0	0.18	147.06	514.0	0.8	1.3	-0.3	0.24	
539.0	0.26	161.70	539.0	0.7	1.3	-0.3	0.39	
564.0	0.23	161.92	564.0	0.6	1.3	-0.1	0.12	
589.0	0.19	172.10	589.0	0.5	1.4	-0.1	0.22	
614.0	0.17	163.36	614.0	0.4	1.4	0.0	0.14	
639.0	0.14	138.04	639.0	0.3	1.4	0.1	0.30	
664.0	0.14	149.87	664.0	0.3	1.4	0.1	0.12	
689.0	0.23	171.80	689.0	0.2	1.5	0.2	0.45	
714.0	0.27	173.16	714.0	0.1	1.5	0.3	0.16	
739.0	0.27	174.36	739.0	0.0	1.5	0.4	0.02	
764.0	0.22	184.03	764.0	-0.1	1.5	0.6	0.26	
789.0	0.18	180.64	789.0	-0.2	1.5	0.6	0.17	
814.0	0.19	189.10	814.0	-0.3	1.5	0.7	0.12	
839.0	0.14	160.45	839.0	-0.4	1.5	0.8	0.38	
864.0	0.15	157.72	864.0	-0.4	1.5	0.8	0.05	
889.0	0.18	171.87	889.0	-0.5	1.5	0.9	0.20	
914.0	0.16	180.84	914.0	-0.6	1.5	1.0	0.13	
939.0	0.11	212.37	939.0	-0.6	1.5	1.0	0.35	
964.0	0.16	247.56	964.0	-0.6	1.5	1.1	0.38	
989.0	0.05	232.83	989.0	-0.7	1.4	1.1	0.45	
1,014.0	0.09	206.46	1,014.0	-0.7	1.4	1.1	0.20	
1,039.0	0.09	206.45	1,039.0	-0.7	1.4	1.1	0.00	
1,064.0	0.05	185.00	1,064.0	-0.8	1.4	1.1	0.19	
1,089.0	0.05	205.44	1,089.0	-0.8	1.4	1.1	0.07	
1,114.0	0.13	214.89	1,114.0	-0.8	1.4	1.2	0.32	
1,139.0	0.08	238.69	1,139.0	-0.8	1.3	1.2	0.26	
1,164.0	0.11	263.17	1,164.0	-0.9	1.3	1.2	0.20	
1,189.0	0.15	306.35	1,189.0	-0.8	1.2	1.2	0.41	
1,214.0	0.11	295.44	1,214.0	-0.8	1.2	1.1	0.19	
1,239.0	0.04	206.13	1,239.0	-0.8	1.2	1.1	0.47	
1,264.0	0.11	182.50	1,264.0	-0.8	1.2	1.1	0.30	
1,289.0	0.06	216.10	1,289.0	-0.9	1.1	1.2	0.27	
1,314.0	0.12	230.81	1,314.0	-0.9	1.1	1.2	0.26	
1,339.0	0.11	271.24	1,339.0	-0.9	1.1	1.2	0.32	
1,364.0	0.19	215.80	1,364.0	-0.9	1.0	1.2	0.63	

RECEIVED
Office of Oil and Gas
OCT 30 2017
COMPASS 5000.1 Build 70
WV Department of
Environmental Protection
11/10/2017



EOW Completion Report



Company:	Antero Resources	Local Co-ordinate Reference:	Well Swiger Unit 2H
Project:	Doddridge County WV	TVD Reference:	Patterson 347: GL 1332' + KB 25' @ 1357.0usft
Site:	Stewart Pad	MD Reference:	Patterson 347: GL 1332' + KB 25' @ 1357.0usft
Well:	Swiger Unit 2H	North Reference:	Grid
Wellbore:	Original Wellpath	Survey Calculation Method:	Minimum Curvature
Design:	As Drilled	Database:	Oklahoma District

Survey								
MD (usft)	Inc (°)	Azi (azimuth) (°)	TVD (usft)	N/S (usft)	E/W (usft)	V. Sec (usft)	DLeg (°/100usft)	
1,389.0	0.08	266.63	1,389.0	-1.0	1.0	1.2	0.61	
1,414.0	0.10	256.49	1,414.0	-1.0	0.9	1.2	0.10	
1,439.0	0.15	257.34	1,439.0	-1.0	0.9	1.2	0.20	
1,464.0	0.19	344.27	1,464.0	-1.0	0.9	1.2	0.94	
1,489.0	0.08	229.43	1,489.0	-0.9	0.8	1.1	0.94	
1,514.0	0.08	329.17	1,514.0	-0.9	0.8	1.1	0.49	
1,539.0	0.06	47.27	1,539.0	-0.9	0.8	1.1	0.36	
1,564.0	0.05	106.86	1,564.0	-0.9	0.8	1.1	0.22	
1,589.0	0.14	173.11	1,589.0	-0.9	0.8	1.1	0.51	
1,614.0	0.10	38.06	1,614.0	-1.0	0.9	1.2	0.89	
1,639.0	0.08	44.86	1,639.0	-0.9	0.9	1.1	0.09	
1,664.0	0.12	92.20	1,664.0	-0.9	0.9	1.1	0.35	
1,689.0	0.14	87.12	1,689.0	-0.9	1.0	1.2	0.09	
1,714.0	0.09	40.23	1,714.0	-0.9	1.0	1.2	0.41	
1,739.0	0.17	159.35	1,739.0	-0.9	1.0	1.2	0.91	
1,764.0	0.11	147.94	1,764.0	-1.0	1.1	1.2	0.26	
1,789.0	0.04	117.38	1,789.0	-1.0	1.1	1.3	0.31	
1,814.0	0.16	73.21	1,814.0	-1.0	1.1	1.3	0.54	
1,839.0	0.12	84.79	1,839.0	-1.0	1.2	1.3	0.20	
1,864.0	0.13	111.02	1,864.0	-1.0	1.2	1.3	0.23	
1,889.0	0.12	125.51	1,889.0	-1.0	1.3	1.3	0.13	
1,914.0	0.18	126.74	1,914.0	-1.0	1.3	1.4	0.24	
1,939.0	0.10	135.33	1,939.0	-1.1	1.4	1.4	0.33	
1,964.0	0.09	144.14	1,964.0	-1.1	1.4	1.5	0.07	
1,989.0	0.06	95.15	1,989.0	-1.1	1.4	1.5	0.27	
2,014.0	0.16	61.40	2,014.0	-1.1	1.5	1.5	0.46	
2,039.0	0.12	116.96	2,039.0	-1.1	1.5	1.5	0.54	
2,064.0	0.24	120.07	2,064.0	-1.2	1.6	1.6	0.48	
2,089.0	0.12	95.01	2,089.0	-1.2	1.7	1.6	0.56	
2,114.0	0.16	137.72	2,114.0	-1.2	1.7	1.7	0.43	
2,139.0	0.19	90.04	2,139.0	-1.2	1.8	1.7	0.58	
2,164.0	0.14	101.43	2,164.0	-1.2	1.9	1.7	0.24	
2,189.0	0.15	120.07	2,189.0	-1.3	1.9	1.8	0.19	
2,214.0	0.21	96.02	2,214.0	-1.3	2.0	1.8	0.38	
2,239.0	0.04	109.83	2,239.0	-1.3	2.1	1.8	0.69	
2,264.0	0.23	89.93	2,264.0	-1.3	2.1	1.9	0.77	
2,289.0	0.14	83.45	2,289.0	-1.3	2.2	1.9	0.37	
2,314.0	0.16	59.23	2,314.0	-1.3	2.3	1.9	0.26	
2,339.0	0.13	73.20	2,339.0	-1.2	2.3	1.9	0.18	
2,364.0	0.11	93.19	2,364.0	-1.2	2.4	1.9	0.18	
2,389.0	0.08	130.74	2,389.0	-1.2	2.4	1.9	0.27	
2,414.0	0.02	203.10	2,414.0	-1.3	2.4	1.9	0.31	
2,439.0	0.17	201.59	2,439.0	-1.3	2.4	2.0	0.60	
2,464.0	0.11	345.09	2,464.0	-1.3	2.4	2.0	1.07	
2,489.0	0.22	10.34	2,489.0	-1.2	2.4	1.9	0.52	

RECEIVED
Office of Oil and Gas

OCT 30 2017

11/10/2017



Company:	Antero Resources	Local Co-ordinate Reference:	Well Swiger Unit 2H
Project:	Doddridge County WV	TVD Reference:	Patterson 347: GL 1332' + KB 25' @ 1357.0usft
Site:	Stewart Pad	MD Reference:	Patterson 347: GL 1332' + KB 25' @ 1357.0usft
Well:	Swiger Unit 2H	North Reference:	Grid
Wellbore:	Original Wellpath	Survey Calculation Method:	Minimum Curvature
Design:	As Drilled	Database:	Oklahoma District

Survey								
MD (usft)	Inc (°)	Azi (azimuth) (°)	TVD (usft)	N/S (usft)	E/W (usft)	V. Sec (usft)	DLeg (°/100usft)	
2,514.0	0.13	41.77	2,514.0	-1.2	2.4	1.8	0.51	
2,539.0	0.11	26.27	2,539.0	-1.1	2.4	1.8	0.15	
2,564.0	0.04	1.33	2,564.0	-1.1	2.4	1.8	0.30	
2,589.0	0.10	319.08	2,589.0	-1.1	2.4	1.7	0.30	
2,614.0	0.89	343.55	2,614.0	-0.9	2.4	1.5	3.20	
2,639.0	1.47	346.75	2,639.0	-0.4	2.2	1.0	2.33	
2,664.0	1.76	345.77	2,664.0	0.3	2.1	0.3	1.17	
2,689.0	1.92	343.51	2,689.0	1.1	1.9	-0.5	0.70	
2,714.0	2.03	343.74	2,713.9	1.9	1.6	-1.3	0.44	
2,739.0	2.69	351.08	2,738.9	2.9	1.4	-2.4	2.90	
2,764.0	3.32	345.58	2,763.9	4.2	1.1	-3.7	2.77	
2,789.0	3.84	341.32	2,788.8	5.7	0.7	-5.2	2.33	
2,814.0	4.48	339.60	2,813.8	7.4	0.1	-7.0	2.61	
2,839.0	4.59	340.84	2,838.7	9.3	-0.6	-9.0	0.59	
2,864.0	4.52	339.71	2,863.6	11.1	-1.3	-11.0	0.46	
2,889.0	4.52	339.36	2,888.5	13.0	-2.0	-13.0	0.11	
2,914.0	4.49	338.30	2,913.5	14.8	-2.7	-14.9	0.35	
2,939.0	4.46	336.12	2,938.4	16.6	-3.4	-16.9	0.69	
2,964.0	4.51	337.26	2,963.3	18.4	-4.2	-18.8	0.41	
2,989.0	4.47	337.53	2,988.2	20.2	-5.0	-20.8	0.18	
3,014.0	4.62	337.43	3,013.2	22.0	-5.7	-22.7	0.60	
3,039.0	4.82	335.93	3,038.1	23.9	-6.5	-24.8	0.94	
3,064.0	4.92	335.22	3,063.0	25.9	-7.4	-26.9	0.47	
3,089.0	5.01	334.43	3,087.9	27.8	-8.3	-29.0	0.45	
3,114.0	4.96	335.70	3,112.8	29.8	-9.2	-31.2	0.48	
3,139.0	4.94	333.99	3,137.7	31.7	-10.2	-33.3	0.60	
3,164.0	4.81	335.59	3,162.6	33.7	-11.1	-35.4	0.75	
3,189.0	4.68	334.35	3,187.5	35.5	-11.9	-37.5	0.66	
3,214.0	4.44	334.03	3,212.4	37.3	-12.8	-39.4	0.97	
3,239.0	3.97	334.99	3,237.4	39.0	-13.6	-41.2	1.90	
3,264.0	3.17	339.24	3,262.3	40.4	-14.2	-42.8	3.37	
3,289.0	2.58	343.30	3,287.3	41.6	-14.6	-44.0	2.50	
3,314.0	1.94	349.53	3,312.3	42.5	-14.8	-45.0	2.74	
3,339.0	1.46	358.27	3,337.3	43.3	-14.9	-45.8	2.18	
3,364.0	1.17	9.36	3,362.3	43.8	-14.9	-46.3	1.54	
3,389.0	1.05	7.55	3,387.3	44.3	-14.8	-46.7	0.50	
3,414.0	1.08	6.92	3,412.2	44.8	-14.8	-47.2	0.13	
3,439.0	0.81	29.46	3,437.2	45.2	-14.7	-47.5	1.82	
3,464.0	0.78	53.77	3,462.2	45.4	-14.4	-47.7	1.34	
3,489.0	0.71	57.38	3,487.2	45.6	-14.2	-47.8	0.34	
3,514.0	0.76	64.27	3,512.2	45.8	-13.9	-47.8	0.41	
3,539.0	0.73	61.51	3,537.2	45.9	-13.6	-47.9	0.19	
3,564.0	0.68	65.55	3,562.2	46.1	-13.3	-47.9	0.28	
3,589.0	0.67	65.66	3,587.2	46.2	-13.1	-48.0	0.04	

RECEIVED
Office of Oil and Gas

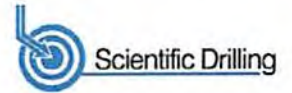
OCT 30 2017

WV Department of
Environmental Protection

11/10/2017



EOW Completion Report



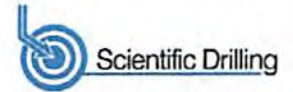
Company:	Antero Resources	Local Co-ordinate Reference:	Well Swiger Unit 2H
Project:	Doddridge County WV	TVD Reference:	Patterson 347: GL 1332' + KB 25' @ 1357.0usft
Site:	Stewart Pad	MD Reference:	Patterson 347: GL 1332' + KB 25' @ 1357.0usft
Well:	Swiger Unit 2H	North Reference:	Grid
Wellbore:	Original Wellpath	Survey Calculation Method:	Minimum Curvature
Design:	As Drilled	Database:	Oklahoma District

Survey

MD (usft)	Inc (°)	Azi (azimuth) (°)	TVD (usft)	N/S (usft)	E/W (usft)	V. Sec (usft)	DLeg (%/100usft)
3,614.0	0.58	62.81	3,612.2	46.3	-12.8	-48.0	0.38
3,639.0	0.62	53.02	3,637.2	46.4	-12.6	-48.1	0.44
3,664.0	0.69	56.91	3,662.2	46.6	-12.4	-48.2	0.33
3,689.0	0.75	53.42	3,687.2	46.8	-12.1	-48.3	0.30
3,714.0	0.70	64.07	3,712.2	46.9	-11.8	-48.3	0.57
3,739.0	0.55	66.46	3,737.2	47.1	-11.6	-48.4	0.61
3,764.0	0.55	67.53	3,762.2	47.2	-11.4	-48.4	0.04
3,789.0	0.43	62.68	3,787.2	47.2	-11.2	-48.4	0.51
3,814.0	0.40	64.43	3,812.2	47.3	-11.0	-48.5	0.13
3,839.0	0.32	36.37	3,837.2	47.4	-10.9	-48.5	0.76
3,864.0	0.23	322.22	3,862.2	47.5	-10.9	-48.6	1.36
3,889.0	0.15	262.84	3,887.2	47.5	-10.9	-48.7	0.80
3,914.0	0.05	217.99	3,912.2	47.5	-11.0	-48.7	0.48
3,939.0	0.12	243.41	3,937.2	47.5	-11.0	-48.6	0.31
3,964.0	0.14	212.85	3,962.2	47.5	-11.0	-48.6	0.28
3,989.0	0.21	240.37	3,987.2	47.4	-11.1	-48.6	0.43
4,014.0	0.19	254.35	4,012.2	47.4	-11.2	-48.6	0.21
4,039.0	0.22	263.73	4,037.2	47.4	-11.3	-48.6	0.18
4,064.0	0.26	281.87	4,062.2	47.4	-11.4	-48.6	0.34
4,089.0	0.18	222.19	4,087.2	47.4	-11.5	-48.6	0.92
4,114.0	0.15	246.71	4,112.2	47.3	-11.5	-48.6	0.30
4,139.0	0.07	222.96	4,137.2	47.3	-11.5	-48.6	0.36
4,164.0	0.18	244.43	4,162.2	47.3	-11.6	-48.6	0.47
4,189.0	0.20	228.57	4,187.2	47.2	-11.7	-48.6	0.22
4,214.0	0.23	223.44	4,212.2	47.2	-11.7	-48.5	0.14
4,239.0	0.27	230.52	4,237.2	47.1	-11.8	-48.5	0.20
4,264.0	0.41	258.77	4,262.2	47.0	-11.9	-48.5	0.86
4,289.0	0.53	231.58	4,287.2	46.9	-12.1	-48.4	1.00
4,314.0	0.63	216.77	4,312.2	46.8	-12.3	-48.3	0.72
4,339.0	0.61	228.16	4,337.2	46.6	-12.5	-48.2	0.50
4,364.0	0.84	250.12	4,362.2	46.4	-12.7	-48.1	1.43
4,389.0	0.91	237.54	4,387.2	46.2	-13.1	-48.0	0.82
4,414.0	1.15	244.14	4,412.2	46.0	-13.5	-48.0	1.07
4,439.0	1.23	241.62	4,437.2	45.8	-13.9	-47.9	0.38
4,464.0	1.29	240.21	4,462.2	45.5	-14.4	-47.7	0.27
4,489.0	1.41	242.40	4,487.2	45.2	-14.9	-47.6	0.52
4,514.0	1.59	246.14	4,512.2	45.0	-15.5	-47.5	0.82
4,539.0	1.64	244.47	4,537.2	44.7	-16.2	-47.4	0.27
4,564.0	2.05	249.06	4,562.2	44.3	-16.9	-47.4	1.74
4,589.0	2.46	251.28	4,587.1	44.0	-17.8	-47.3	1.68
4,614.0	3.16	253.07	4,612.1	43.6	-19.0	-47.3	2.82
4,639.0	3.81	253.10	4,637.1	43.2	-20.5	-47.3	2.60
4,664.0	4.33	252.70	4,662.0	42.7	-22.2	-47.3	2.08
4,689.0	5.61	253.98	4,686.9	42.1	-24.2	-47.3	5.14

RECEIVED
Office of Oil and Gas

OCT 30 2017



Company:	Antero Resources	Local Co-ordinate Reference:	Well Swiger Unit 2H
Project:	Doddridge County WV	TVD Reference:	Patterson 347: GL 1332' + KB 25' @ 1357.0usft
Site:	Stewart Pad	MD Reference:	Patterson 347: GL 1332' + KB 25' @ 1357.0usft
Well:	Swiger Unit 2H	North Reference:	Grid
Wellbore:	Original Wellpath	Survey Calculation Method:	Minimum Curvature
Design:	As Drilled	Database:	Oklahoma District

Survey

MD (usft)	Inc (°)	Azi (azimuth) (°)	TVD (usft)	N/S (usft)	E/W (usft)	V. Sec (usft)	DLeg (°/100usft)
4,714.0	6.25	254.37	4,711.8	41.4	-26.7	-47.4	2.57
4,739.0	6.51	254.78	4,736.6	40.6	-29.4	-47.5	1.06
4,764.0	6.70	253.34	4,761.4	39.8	-32.2	-47.5	1.01
4,789.0	6.87	254.00	4,786.3	39.0	-35.0	-47.6	0.75
4,814.0	7.29	254.86	4,811.1	38.2	-38.0	-47.7	1.73
4,839.0	7.69	255.13	4,835.9	37.3	-41.1	-47.8	1.61
4,864.0	8.42	255.88	4,860.6	36.5	-44.5	-48.0	2.95
4,889.0	8.96	255.85	4,885.3	35.5	-48.2	-48.2	2.16
4,914.0	9.73	256.75	4,910.0	34.6	-52.1	-48.4	3.13
4,939.0	10.05	256.70	4,934.6	33.6	-56.3	-48.7	1.28
4,964.0	10.47	256.03	4,959.2	32.5	-60.6	-49.0	1.75
4,989.0	11.02	255.55	4,983.8	31.4	-65.1	-49.2	2.23
5,014.0	11.80	256.65	5,008.3	30.2	-69.9	-49.5	3.24
5,039.0	12.85	257.40	5,032.7	29.0	-75.1	-49.9	4.25
5,064.0	13.50	257.97	5,057.1	27.8	-80.7	-50.4	2.65
5,089.0	14.04	258.65	5,081.3	26.6	-86.5	-50.9	2.25
5,114.0	14.86	259.54	5,105.6	25.4	-92.7	-51.6	3.40
5,139.0	15.25	259.46	5,129.7	24.2	-99.0	-52.3	1.56
5,164.0	15.85	259.53	5,153.8	23.0	-105.6	-53.1	2.40
5,189.0	16.36	256.94	5,177.8	21.6	-112.4	-53.8	3.52
5,214.0	16.97	254.40	5,201.7	19.8	-119.4	-54.1	3.80
5,239.0	18.05	252.69	5,225.6	17.7	-126.6	-54.2	4.78
5,264.0	18.59	252.50	5,249.3	15.3	-134.1	-54.2	2.17
5,289.0	18.96	252.50	5,273.0	12.9	-141.7	-54.1	1.48
5,314.0	19.68	253.19	5,296.6	10.5	-149.6	-54.1	3.02
5,339.0	19.98	253.53	5,320.1	8.0	-157.8	-54.2	1.29
5,364.0	20.66	253.79	5,343.5	5.6	-166.1	-54.3	2.74
5,389.0	21.84	253.95	5,366.8	3.1	-174.8	-54.5	4.73
5,414.0	22.76	253.98	5,390.0	0.5	-183.9	-54.7	3.68
5,439.0	23.57	253.95	5,413.0	-2.3	-193.4	-54.9	3.24
5,464.0	24.27	253.68	5,435.8	-5.1	-203.1	-55.0	2.83
5,489.0	25.25	252.96	5,458.5	-8.1	-213.1	-55.1	4.10
5,514.0	25.92	251.79	5,481.1	-11.4	-223.4	-55.0	3.36
5,539.0	26.41	251.22	5,503.5	-14.9	-233.9	-54.8	2.20
5,564.0	26.73	250.71	5,525.9	-18.5	-244.5	-54.4	1.57
5,589.0	26.85	250.80	5,548.2	-22.2	-255.1	-54.0	0.51
5,614.0	27.65	251.10	5,570.4	-26.0	-265.9	-53.6	3.25
5,639.0	28.13	251.72	5,592.5	-29.7	-277.0	-53.3	2.24
5,664.0	28.28	252.14	5,614.5	-33.3	-288.2	-53.1	1.00
5,689.0	27.86	251.91	5,636.6	-37.0	-299.4	-53.0	1.73
5,714.0	27.85	251.58	5,658.7	-40.6	-310.5	-52.7	0.62
5,739.0	28.48	251.41	5,680.7	-44.4	-321.7	-52.5	2.54
5,764.0	28.54	250.98	5,702.7	-48.2	-333.0	-52.1	0.86
5,789.0	28.53	250.59	5,724.7	-52.2	-344.3	-51.7	0.75

RECEIVED
Office of Oil & Gas

OCT 30 2017



Company:	Antero Resources	Local Co-ordinate Reference:	Well Swiger Unit 2H
Project:	Doddridge County WV	TVD Reference:	Patterson 347: GL 1332' + KB 25' @ 1357.0usft
Site:	Stewart Pad	MD Reference:	Patterson 347: GL 1332' + KB 25' @ 1357.0usft
Well:	Swiger Unit 2H	North Reference:	Grid
Wellbore:	Original Wellpath	Survey Calculation Method:	Minimum Curvature
Design:	As Drilled	Database:	Oklahoma District

Survey								
MD (usft)	Inc (°)	Azi (azimuth) (°)	TVD (usft)	N/S (usft)	E/W (usft)	V. Sec (usft)	DLeg (°/100usft)	
5,814.0	29.09	250.47	5,746.6	-56.2	-355.6	-51.2	2.25	
5,839.0	29.22	250.48	5,768.4	-60.2	-367.1	-50.7	0.52	
5,864.0	29.10	251.68	5,790.2	-64.2	-378.6	-50.3	2.39	
5,889.0	28.77	252.07	5,812.1	-68.0	-390.1	-50.1	1.52	
5,914.0	28.58	251.94	5,834.0	-71.7	-401.5	-49.9	0.80	
5,939.0	28.16	251.43	5,856.0	-75.4	-412.8	-49.7	1.94	
5,964.0	27.99	251.38	5,878.1	-79.1	-424.0	-49.4	0.69	
5,989.0	27.82	251.79	5,900.2	-82.8	-435.1	-49.1	1.03	
6,014.0	27.69	252.06	5,922.3	-86.5	-446.1	-48.9	0.72	
6,039.0	27.60	251.83	5,944.5	-90.1	-457.2	-48.8	0.56	
6,064.0	27.38	251.70	5,966.6	-93.7	-468.1	-48.5	0.91	
6,089.0	27.11	251.42	5,988.9	-97.3	-479.0	-48.3	1.20	
6,114.0	26.80	251.16	6,011.2	-100.9	-489.7	-48.0	1.33	
6,139.0	26.50	250.70	6,033.5	-104.6	-500.3	-47.6	1.46	
6,164.0	26.27	250.32	6,055.9	-108.3	-510.8	-47.1	1.14	
6,182.0	26.26	250.33	6,072.0	-111.0	-518.3	-46.8	0.06	
6,252.0	25.36	248.89	6,135.1	-121.6	-546.9	-45.1	1.57	
6,328.0	24.18	249.51	6,204.1	-132.9	-576.6	-43.0	1.59	
6,422.0	25.96	248.74	6,289.2	-147.1	-613.8	-40.4	1.93	
6,516.0	25.32	251.58	6,373.9	-160.9	-652.1	-38.5	1.47	
6,609.0	25.82	252.05	6,457.8	-173.4	-690.2	-37.8	0.58	
6,703.0	26.64	251.40	6,542.2	-186.5	-729.7	-37.0	0.92	
6,797.0	25.89	249.07	6,626.5	-200.5	-768.8	-35.1	1.36	
6,891.0	26.22	249.02	6,710.9	-215.3	-807.4	-32.4	0.35	
6,921.0	25.04	247.72	6,738.0	-220.1	-819.4	-31.4	4.36	
6,951.0	24.62	252.02	6,765.2	-224.4	-831.2	-30.7	6.18	
6,981.0	25.25	262.86	6,792.4	-227.1	-843.5	-31.7	15.36	
7,011.0	26.82	268.98	6,819.4	-228.0	-856.7	-34.7	10.36	
7,041.0	27.17	266.11	6,846.1	-228.6	-870.3	-38.2	4.50	
7,071.0	26.20	257.56	6,872.9	-230.5	-883.6	-40.3	13.19	
7,089.0	25.96	252.19	6,889.1	-232.6	-891.2	-40.6	13.17	
Sycamore								
7,101.0	25.91	248.58	6,899.9	-234.3	-896.1	-40.3	13.17	
7,131.0	25.63	241.04	6,926.9	-239.9	-907.9	-38.5	10.96	
7,161.0	25.81	233.11	6,953.9	-246.9	-918.8	-35.0	11.48	
7,191.0	26.55	225.28	6,980.9	-255.6	-928.8	-29.7	11.77	
7,221.0	27.57	218.43	7,007.6	-265.7	-937.9	-22.6	10.92	
7,251.0	28.93	213.26	7,034.0	-277.2	-946.2	-14.1	9.33	
7,274.0	30.47	208.99	7,054.0	-287.0	-952.1	-6.5	11.38	
Middlesex								
7,281.0	30.97	207.77	7,060.0	-290.1	-953.8	-4.0	11.38	
7,311.0	33.50	202.71	7,085.4	-304.6	-960.6	7.8	12.33	
7,341.0	36.05	198.67	7,110.0	-320.6	-966.6	21.3	11.45	
7,371.0	39.04	195.07	7,133.8	-338.1	-971.9	36.5	12.36	
7,401.0	41.98	190.76	7,156.6	-357.0	-976.2	53.4	13.53	

OCT 30 2017

RECEIVED
Office of Oil and Gas
WV Department of Environmental Protection

11/10/2017



EOW Completion Report

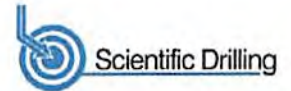


Company:	Antero Resources	Local Co-ordinate Reference:	Well Swiger Unit 2H
Project:	Doddridge County WV	TVD Reference:	Patterson 347: GL 1332' + KB 25' @ 1357.0usft
Site:	Stewart Pad	MD Reference:	Patterson 347: GL 1332' + KB 25' @ 1357.0usft
Well:	Swiger Unit 2H	North Reference:	Grid
Wellbore:	Original Wellpath	Survey Calculation Method:	Minimum Curvature
Design:	As Drilled	Database:	Oklahoma District

Survey							
MD (usft)	Inc (°)	Azi (azimuth) (°)	TVD (usft)	N/S (usft)	E/W (usft)	V. Sec (usft)	DLeg (°/100usft)
7,431.0	44.48	187.63	7,178.5	-377.4	-979.5	71.8	10.98
7,461.0	46.43	185.49	7,199.5	-398.6	-981.9	91.4	8.25
7,491.0	48.18	184.40	7,219.9	-420.6	-983.8	111.8	6.42
7,505.0	49.41	183.69	7,229.1	-431.1	-984.6	121.6	9.57
Tully							
7,521.0	50.82	182.92	7,239.4	-443.4	-985.3	133.1	9.57
7,551.0	54.22	180.86	7,257.6	-467.1	-986.0	155.6	12.57
7,581.0	57.24	181.00	7,274.5	-491.9	-986.4	179.2	10.07
7,611.0	60.33	181.57	7,290.0	-517.6	-987.0	203.5	10.43
7,641.0	64.36	179.61	7,304.0	-544.1	-987.3	228.8	14.63
7,671.0	68.49	177.05	7,316.0	-571.6	-986.5	255.3	15.83
7,701.0	71.55	175.31	7,326.2	-599.7	-984.6	282.7	11.56
7,711.0	72.38	174.73	7,329.3	-609.2	-983.8	292.0	9.93
Marcellus							
7,731.0	74.03	173.58	7,335.1	-628.3	-981.8	310.8	9.93
7,761.0	77.56	171.51	7,342.5	-657.1	-978.0	339.5	13.53
7,791.0	81.57	169.76	7,347.9	-686.2	-973.2	368.7	14.55
7,855.0	89.16	167.20	7,353.1	-748.6	-960.5	432.1	12.51
7,888.0	89.36	166.93	7,353.5	-780.8	-953.1	465.0	1.02
7,982.0	90.24	163.48	7,353.8	-871.7	-929.1	558.9	3.79
8,076.0	90.70	161.07	7,353.0	-961.2	-900.5	652.9	2.61
8,170.0	89.30	161.20	7,353.0	-1,050.1	-870.1	746.9	1.50
8,264.0	88.89	161.58	7,354.5	-1,139.2	-840.1	840.8	0.59
8,358.0	88.52	161.74	7,356.6	-1,228.4	-810.5	934.8	0.43
8,452.0	88.42	162.10	7,359.2	-1,317.7	-781.4	1,028.8	0.40
8,546.0	88.42	162.22	7,361.7	-1,407.2	-752.6	1,122.7	0.13
8,641.0	90.13	163.34	7,362.9	-1,497.9	-724.5	1,217.7	2.15
8,735.0	90.47	163.53	7,362.5	-1,588.0	-697.7	1,311.7	0.41
8,829.0	89.77	162.58	7,362.3	-1,677.9	-670.3	1,405.7	1.26
8,924.0	90.64	163.54	7,361.9	-1,768.8	-642.6	1,500.7	1.36
9,018.0	89.93	165.83	7,361.5	-1,859.5	-617.8	1,594.6	2.55
9,112.0	89.97	166.79	7,361.5	-1,950.8	-595.5	1,688.5	1.02
9,206.0	89.36	165.60	7,362.1	-2,042.1	-573.1	1,782.3	1.42
9,300.0	90.37	165.45	7,362.3	-2,133.1	-549.6	1,876.2	1.09
9,394.0	90.97	163.07	7,361.2	-2,223.6	-524.1	1,970.1	2.61
9,489.0	90.71	160.60	7,359.8	-2,313.8	-494.5	2,065.1	2.61
9,583.0	87.32	160.62	7,361.4	-2,402.4	-463.3	2,159.0	3.61
9,677.0	86.71	160.93	7,366.3	-2,491.1	-432.4	2,252.8	0.73
9,771.0	88.16	161.57	7,370.5	-2,580.0	-402.2	2,346.7	1.69
9,866.0	88.96	162.64	7,372.9	-2,670.4	-373.0	2,441.6	1.41
9,960.0	87.75	161.11	7,375.6	-2,759.7	-343.8	2,535.6	2.07
10,054.0	87.55	160.97	7,379.5	-2,848.5	-313.3	2,629.5	0.26
10,148.0	88.73	162.92	7,382.5	-2,937.8	-284.2	2,723.4	2.42
10,242.0	88.12	163.32	7,385.1	-3,027.7	-256.9	2,817.4	0.78
10,337.0	88.93	163.74	7,387.6	-3,118.8	-229.9	2,912.3	0.96

RECEIVED
Office of Oil & Gas

OCT 30 2017



Company:	Antero Resources	Local Co-ordinate Reference:	Well Swiger Unit 2H
Project:	Doddridge County WV	TVD Reference:	Patterson 347: GL 1332' + KB 25' @ 1357.0usft
Site:	Stewart Pad	MD Reference:	Patterson 347: GL 1332' + KB 25' @ 1357.0usft
Well:	Swiger Unit 2H	North Reference:	Grid
Wellbore:	Original Wellpath	Survey Calculation Method:	Minimum Curvature
Design:	As Drilled	Database:	Oklahoma District

Survey							
MD (usft)	Inc (°)	Azi (azimuth) (°)	TVD (usft)	N/S (usft)	E/W (usft)	V. Sec (usft)	DLeg (°/100usft)
10,431.0	91.31	166.04	7,387.4	-3,209.5	-205.4	3,006.2	3.52
10,525.0	92.08	163.42	7,384.6	-3,300.2	-180.7	3,100.1	2.90
10,619.0	91.44	162.97	7,381.7	-3,390.1	-153.5	3,194.1	0.83
10,714.0	90.20	161.10	7,380.3	-3,480.5	-124.2	3,289.1	2.36
10,808.0	88.99	159.67	7,381.0	-3,569.0	-92.7	3,383.0	1.99
10,902.0	91.07	161.08	7,380.9	-3,657.5	-61.1	3,476.9	2.67
10,996.0	90.54	160.98	7,379.6	-3,746.4	-30.6	3,570.8	0.57
11,091.0	88.39	159.60	7,380.5	-3,835.8	1.5	3,665.7	2.69
11,185.0	88.63	162.76	7,383.0	-3,924.8	31.8	3,759.6	3.37
11,279.0	90.40	163.62	7,383.7	-4,014.8	59.0	3,853.6	2.09
11,373.0	90.94	163.33	7,382.6	-4,104.9	85.7	3,947.6	0.65
11,467.0	89.93	160.63	7,381.9	-4,194.2	114.8	4,041.6	3.07
11,561.0	91.28	162.26	7,380.9	-4,283.3	144.7	4,135.6	2.25
11,656.0	91.28	161.23	7,378.8	-4,373.5	174.4	4,230.5	1.08
11,750.0	91.84	163.41	7,376.3	-4,463.1	203.0	4,324.5	2.39
11,844.0	91.85	162.41	7,373.2	-4,552.9	230.6	4,418.4	1.06
11,938.0	92.24	163.66	7,369.9	-4,642.7	258.0	4,512.4	1.39
12,032.0	92.12	162.94	7,366.3	-4,732.7	285.0	4,606.3	0.78
12,126.0	92.45	162.92	7,362.6	-4,822.5	312.5	4,700.2	0.35
12,220.0	90.84	162.49	7,359.9	-4,912.2	340.5	4,794.2	1.77
12,314.0	90.13	163.68	7,359.1	-5,002.1	367.8	4,888.2	1.47
12,408.0	89.63	165.09	7,359.3	-5,092.6	393.1	4,982.1	1.59
12,498.0	91.04	164.77	7,358.7	-5,179.5	416.5	5,072.1	1.61
12,588.0	90.70	163.95	7,357.4	-5,266.2	440.8	5,162.0	0.99
12,678.0	89.50	163.88	7,357.2	-5,352.7	465.7	5,252.0	1.34
12,770.0	89.73	164.42	7,357.8	-5,441.2	490.9	5,344.0	0.64
12,862.0	90.30	162.72	7,357.8	-5,529.4	516.9	5,436.0	1.95
12,953.0	90.54	163.00	7,357.1	-5,616.4	543.7	5,527.0	0.41
13,045.0	90.74	162.99	7,356.1	-5,704.3	570.6	5,619.0	0.22
13,135.0	88.46	162.55	7,356.7	-5,790.3	597.2	5,708.9	2.58
13,228.0	88.96	162.61	7,358.8	-5,879.0	625.1	5,801.9	0.54
13,320.0	89.16	162.14	7,360.3	-5,966.7	652.9	5,893.9	0.56
13,411.0	89.97	163.43	7,361.0	-6,053.6	679.9	5,984.9	1.67
13,504.0	91.82	164.50	7,359.6	-6,143.0	705.6	6,077.9	2.30
13,598.0	91.68	164.23	7,356.7	-6,233.4	730.9	6,171.8	0.32
13,692.0	90.34	164.37	7,355.1	-6,323.9	756.3	6,265.7	1.43
13,786.0	90.47	164.50	7,354.4	-6,414.5	781.5	6,359.7	0.20
13,880.0	90.54	164.82	7,353.6	-6,505.1	806.4	6,453.7	0.35
13,974.0	90.30	161.48	7,352.9	-6,595.1	833.6	6,547.6	3.56
14,068.0	89.50	160.71	7,353.0	-6,684.0	864.1	6,641.6	1.18
14,163.0	90.33	162.45	7,353.2	-6,774.1	894.1	6,736.6	2.03
14,257.0	90.00	162.06	7,352.9	-6,863.6	922.8	6,830.6	0.54
14,351.0	89.16	160.76	7,353.6	-6,952.7	952.7	6,924.5	1.65
14,445.0	88.22	160.67	7,355.7	-7,041.4	983.8	7,018.4	1.00

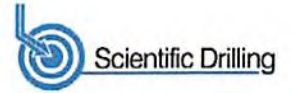
RECEIVED
Office of Oil and Gas



Company:	Antero Resources	Local Co-ordinate Reference:	Well Swiger Unit 2H
Project:	Doddridge County WV	TVD Reference:	Patterson 347: GL 1332' + KB 25' @ 1357.0usft
Site:	Stewart Pad	MD Reference:	Patterson 347: GL 1332' + KB 25' @ 1357.0usft
Well:	Swiger Unit 2H	North Reference:	Grid
Wellbore:	Original Wellpath	Survey Calculation Method:	Minimum Curvature
Design:	As Drilled	Database:	Oklahoma District

Survey							
MD (usft)	Inc (°)	Azi (azimuth) (°)	TVD (usft)	N/S (usft)	E/W (usft)	V. Sec (usft)	DLeg (°/100usft)
14,539.0	88.86	162.34	7,358.1	-7,130.5	1,013.6	7,112.4	1.90
14,634.0	88.36	162.08	7,360.4	-7,221.0	1,042.6	7,207.3	0.59
14,728.0	89.53	162.61	7,362.2	-7,310.5	1,071.1	7,301.3	1.37
14,822.0	89.56	162.54	7,362.9	-7,400.2	1,099.2	7,395.3	0.08
14,916.0	90.37	163.64	7,363.0	-7,490.2	1,126.6	7,489.3	1.45
15,010.0	89.77	162.12	7,362.9	-7,580.0	1,154.2	7,583.3	1.74
15,105.0	90.71	164.46	7,362.5	-7,671.0	1,181.6	7,678.3	2.65
15,199.0	90.94	164.95	7,361.1	-7,761.6	1,206.4	7,772.2	0.58
15,293.0	90.47	163.09	7,360.0	-7,852.0	1,232.2	7,866.2	2.04
15,388.0	91.61	163.92	7,358.2	-7,943.1	1,259.2	7,961.2	1.48
15,482.0	91.55	163.71	7,355.6	-8,033.3	1,285.4	8,055.1	0.23
15,576.0	90.94	163.27	7,353.6	-8,123.4	1,312.1	8,149.1	0.80
15,670.0	90.90	163.10	7,352.1	-8,213.4	1,339.3	8,243.1	0.19
15,764.0	91.10	162.90	7,350.4	-8,303.2	1,366.8	8,337.1	0.30
15,858.0	90.98	163.07	7,348.7	-8,393.1	1,394.3	8,431.1	0.22
15,953.0	91.25	163.44	7,346.9	-8,484.1	1,421.6	8,526.0	0.48
16,047.0	89.06	160.03	7,346.6	-8,573.3	1,451.1	8,620.0	4.31
16,141.0	89.09	159.90	7,348.2	-8,661.6	1,483.3	8,713.9	0.14
16,235.0	90.27	161.62	7,348.7	-8,750.4	1,514.3	8,807.8	2.22
16,329.0	90.30	160.65	7,348.2	-8,839.3	1,544.7	8,901.8	1.03
16,423.0	89.66	161.59	7,348.2	-8,928.2	1,575.1	8,995.7	1.21
16,518.0	88.99	163.89	7,349.4	-9,019.0	1,603.3	9,090.7	2.52
16,612.0	90.54	163.55	7,349.7	-9,109.2	1,629.6	9,184.7	1.69
16,706.0	90.74	165.12	7,348.7	-9,199.7	1,655.0	9,278.6	1.68
16,800.0	90.98	164.17	7,347.3	-9,290.3	1,679.9	9,372.6	1.04
16,894.0	91.24	164.59	7,345.5	-9,380.8	1,705.2	9,466.5	0.53
16,988.0	90.90	163.35	7,343.7	-9,471.2	1,731.1	9,560.5	1.37
17,082.0	89.93	161.85	7,343.0	-9,560.8	1,759.2	9,654.5	1.90
17,176.0	89.53	162.35	7,343.5	-9,650.3	1,788.1	9,748.5	0.68
17,270.0	89.76	162.22	7,344.1	-9,739.8	1,816.7	9,842.5	0.28
17,364.0	89.80	163.39	7,344.4	-9,829.6	1,844.5	9,936.5	1.25
17,458.0	89.83	162.40	7,344.7	-9,919.5	1,872.2	10,030.5	1.05
17,552.0	90.13	161.88	7,344.8	-10,009.9	1,901.0	10,124.5	0.64
17,647.0	90.10	161.41	7,344.6	-10,099.1	1,930.9	10,219.4	0.50
17,741.0	89.43	162.99	7,344.9	-10,188.6	1,959.6	10,313.4	1.83
17,835.0	89.66	160.93	7,345.7	-10,278.0	1,988.7	10,407.4	2.21
17,929.0	90.54	162.64	7,345.5	-10,367.3	2,018.1	10,501.4	2.05
18,023.0	90.77	164.28	7,344.5	-10,457.4	2,044.9	10,595.4	1.76
18,117.0	90.91	164.16	7,343.1	-10,547.8	2,070.4	10,689.3	0.20
18,211.0	91.51	164.11	7,341.1	-10,638.2	2,096.1	10,783.3	0.64
18,306.0	89.43	161.93	7,340.3	-10,729.1	2,123.9	10,878.3	3.17
18,400.0	89.73	163.02	7,341.0	-10,818.7	2,152.2	10,972.3	1.20
18,494.0	90.30	162.60	7,341.0	-10,908.5	2,180.0	11,066.3	0.75
18,588.0	90.27	161.73	7,340.5	-10,998.0	2,208.8	11,160.3	0.93

RECEIVED
Office of Oil and Gas



Company:	Antero Resources	Local Co-ordinate Reference:	Well Swiger Unit 2H
Project:	Doddridge County WV	TVD Reference:	Patterson 347: GL 1332' + KB 25' @ 1357.0usft
Site:	Stewart Pad	MD Reference:	Patterson 347: GL 1332' + KB 25' @ 1357.0usft
Well:	Swiger Unit 2H	North Reference:	Grid
Wellbore:	Original Wellpath	Survey Calculation Method:	Minimum Curvature
Design:	As Drilled	Database:	Oklahoma District

MD (usft)	Inc (°)	Azi (azimuth) (°)	TVD (usft)	N/S (usft)	E/W (usft)	V. Sec (usft)	DLeg (°/100usft)
18,682.0	90.37	160.27	7,340.0	-11,086.8	2,239.4	11,254.2	1.56
18,776.0	89.70	162.12	7,339.9	-11,175.8	2,269.7	11,348.2	2.09
18,870.0	89.80	162.03	7,340.3	-11,265.3	2,298.6	11,442.2	0.14
18,964.0	90.00	162.45	7,340.5	-11,354.8	2,327.3	11,536.1	0.49
19,059.0	90.54	162.42	7,340.1	-11,445.3	2,355.9	11,631.1	0.57
19,153.0	90.57	163.55	7,339.1	-11,535.2	2,383.4	11,725.1	1.20
19,231.0	90.54	163.68	7,338.4	-11,610.1	2,405.4	11,803.1	0.17
19,276.0	90.97	163.65	7,337.8	-11,653.2	2,418.1	11,848.1	0.96
19,334.0	91.52	163.65	7,336.5	-11,708.9	2,434.4	11,906.1	0.95

Measured Depth (usft)	Vertical Depth (usft)	Local Coordinates		Comment
		+N/-S (usft)	+E/-W (usft)	
7,089.0	6,889.1	-232.6	-891.2	Sycamore
7,274.0	7,054.0	-287.0	-952.1	Middlesex
7,505.0	7,229.1	-431.1	-984.6	Tully
7,711.0	7,329.3	-609.2	-983.8	Marcellus

Checked By: _____ Approved By: _____ Date: _____

RECEIVED
Office of Oil and Gas
OCT 30 2017