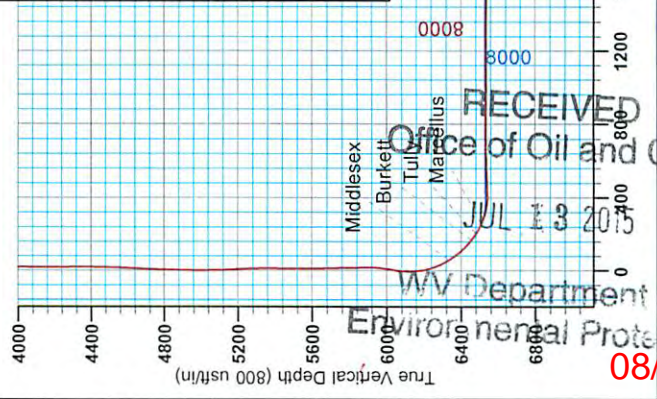




Antero Resources  
 Leggett Unit 2H  
 Doddridge County WV  
 Northing: 14248467.61  
 Easting: 1679248.10  
 As Drilled



**WELL DETAILS: Leggett Unit 2H**

+N/S	+E/W	Northings	Eastings	Ground Level	990.0	Slot
0.0	0.0	14248467.61	1679248.10	30° 14' 15.272 N	80° 51' 46.289 W	

**REFERENCE INFORMATION**

Coordinate (N/E) Reference: Well Leggett Unit 2H, Doddridge County, West Virginia  
 Section (N/S) Reference: SHL-02 (N, 0.0E)  
 Measurement: Magnetic North  
 Calculation Method: Minimum Curvature  
 System Datum: Mean Sea Level

**PROJECT DETAILS: Doddridge County WV**

Geodetic System: Universal Transverse Mercator (US Survey Feet)  
 Datum: NAD 1983 (NAD83 CONUS)  
 Ellipsoid: Clarke 1866  
 Zone: Zone 17N (84 W to 78 W)  
 System Datum: Mean Sea Level

Genie Lightfoot  
 11:57, June 23 2014  
 Scientific Drilling  
 421 South Eagle Lane  
 Oklahoma City, OK



**LEGEND**

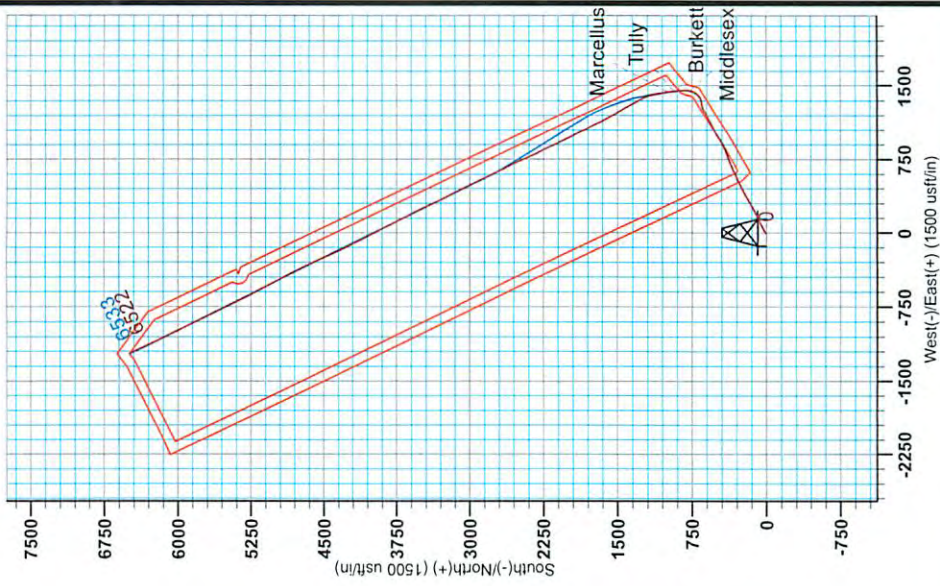
- Leggett Unit 2H, Original Wellpath, Plan 6 V0
- As Drilled

**DESIGN TARGET DETAILS**

Name	TVD	+N/S	+E/W	Northing	Easting	Latitude	Longitude
SHL Leggett Unit 2H	0.0	0.0	0.0	14248467.61	1679248.10	30° 14' 15.272 N	80° 51' 46.289 W
Actual BHL Leggett Unit 2H	6477.6	6477.6	-1212.314254945.23	1678035.8039°	15° 19.339 N	80° 52' 1.582 W	

To convert Magnetic North to Grid, Subtract 8.49°  
 To convert True North to Grid, Subtract 0.09°

Magnetic Field  
 Strength: 52305.6nT  
 Dip Angle: 66.813°  
 Declination: 8.49°  
 Model: EGGM2014





# Antero Resources

Doddridge County WV  
Leggett/ Pike Pad  
Leggett Unit 2H  
Original Wellpath

Design: As Drilled

## EOW Completion Report

23 June, 2014



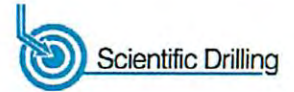
RECEIVED  
Office of Oil and Gas  
Scientific Drilling

JUL 23 2015

WV Department of  
Environmental Protection 08/14/2015



EOW Completion Report



<b>Company:</b>	Antero Resources	<b>Local Co-ordinate Reference:</b>	Well Leggett Unit 2H
<b>Project:</b>	Doddridge County WV	<b>TVD Reference:</b>	Leggett 2H 990 GL + 18 KB @ 1008.0usft
<b>Site:</b>	Leggett/ Pike Pad	<b>MD Reference:</b>	Leggett 2H 990 GL + 18 KB @ 1008.0usft
<b>Well:</b>	Leggett Unit 2H	<b>North Reference:</b>	Grid
<b>Wellbore:</b>	Original Wellpath	<b>Survey Calculation Method:</b>	Minimum Curvature
<b>Design:</b>	As Drilled	<b>Database:</b>	Oklahoma District

<b>Project</b>	Doddridge County WV, McClellan District		
<b>Map System:</b>	Universal Transverse Mercator (US Survey Feet)	<b>System Datum:</b>	Mean Sea Level
<b>Geo Datum:</b>	NAD 1927 (NADCON CONUS)		
<b>Map Zone:</b>	Zone 17N (84 W to 78 W)		

<b>Site</b>	Leggett/ Pike Pad				
<b>Site Position:</b>	<b>Northing:</b>	14,248,467.61 usft	<b>Latitude:</b>	39° 14' 15.272 N	
<b>From:</b>	<b>Easting:</b>	1,679,248.10 usft	<b>Longitude:</b>	80° 51' 46.289 W	
<b>Position Uncertainty:</b>	0.0 usft	<b>Slot Radius:</b>	13-3/16"	<b>Grid Convergence:</b>	0.09 °

<b>Well</b>	Leggett Unit 2H					
<b>Well Position</b>	<b>+N/-S</b>	0.0 usft	<b>Northing:</b>	14,248,467.61 usft	<b>Latitude:</b>	39° 14' 15.272 N
	<b>+E/-W</b>	0.0 usft	<b>Easting:</b>	1,679,248.10 usft	<b>Longitude:</b>	80° 51' 46.289 W
<b>Position Uncertainty</b>	2.0 usft	<b>Wellhead Elevation:</b>	1,008.0 usft	<b>Ground Level:</b>	990.0 usft	

<b>Wellbore</b>	Original Wellpath				
-----------------	-------------------	--	--	--	--

Magnetics	Model Name	Sample Date	Declination (°)	Dip Angle (°)	Field Strength (nT)
	BGGM2014	12/19/2013	-8.40	66.89	52,306

<b>Design</b>	As Drilled				
---------------	------------	--	--	--	--

<b>Audit Notes:</b>					
<b>Version:</b>	1.0	<b>Phase:</b>	ACTUAL	<b>Tie On Depth:</b>	0.0
<b>Vertical Section:</b>	<b>Depth From (TVD) (usft)</b>	<b>+N/-S (usft)</b>	<b>+E/-W (usft)</b>	<b>Direction (°)</b>	
	0.0	0.0	0.0	333.94	

<b>Survey Program</b>	Date 6/23/2014				
From (usft)	To (usft)	Survey (Wellbore)	Tool Name	Description	
107.0	5,579.5	Survey #3 Def Gyro to KOP (Original Well)	SDI Standard Keeper	Scientific Drilling Intl. Standard Wireline Keeper	
5,627.0	13,103.0	Survey #4 MWD (Original Wellpath)	MWD SDI	MWD - Standard ver 1.0.1	

MD (usft)	Inc (°)	Azi (azimuth) (°)	TVD (usft)	N/S (usft)	E/W (usft)	V. Sec (usft)	DLeg (°/100usft)
0.0	0.00	0.00	0.0	0.0	0.0	0.0	0.00
107.0	0.23	326.38	107.0	0.2	-0.1	0.2	0.21
207.0	0.29	345.81	207.0	0.6	-0.3	0.7	0.11
307.0	0.25	326.38	307.0	1.0	-0.5	1.1	0.10
407.0	0.35	323.31	407.0	1.4	-0.8	1.6	0.10
507.0	0.23	319.05	507.0	1.8	-1.1	2.1	0.12
607.0	0.21	314.35	607.0	2.1	-1.4	2.5	0.03
707.0	0.27	296.19	707.0	2.4	-1.7	2.9	0.10
807.0	0.27	286.11	807.0	2.5	-2.1	3.2	0.05
907.0	0.19	316.27	907.0	2.7	-2.5	3.5	0.14
1,007.0	0.27	330.06	1,007.0	3.0	-2.7	3.9	0.10

RECEIVED  
Office of Oil and Gas  
JUL 13 2015  
WV Department of  
Environmental Protection



EOW Completion Report



<b>Company:</b>	Antero Resources	<b>Local Co-ordinate Reference:</b>	Well Leggett Unit 2H
<b>Project:</b>	Doddridge County WV	<b>TVD Reference:</b>	Leggett 2H 990 GL + 18 KB @ 1008.0usft
<b>Site:</b>	Leggett/ Pike Pad	<b>MD Reference:</b>	Leggett 2H 990 GL + 18 KB @ 1008.0usft
<b>Well:</b>	Leggett Unit 2H	<b>North Reference:</b>	Grid
<b>Wellbore:</b>	Original Wellpath	<b>Survey Calculation Method:</b>	Minimum Curvature
<b>Design:</b>	As Drilled	<b>Database:</b>	Oklahoma District

Survey									
MD (usft)	Inc (°)	Azi (azimuth) (°)	TVD (usft)	N/S (usft)	E/W (usft)	V. Sec (usft)	DLeg (°/100usft)		
1,107.0	0.25	355.45	1,107.0	3.5	-2.8	4.4	0.12		
1,207.0	0.27	24.54	1,207.0	3.9	-2.8	4.7	0.13		
1,307.0	0.21	24.69	1,307.0	4.3	-2.6	5.0	0.06		
1,407.0	0.12	47.10	1,407.0	4.5	-2.4	5.1	0.11		
1,507.0	0.14	42.56	1,507.0	4.7	-2.3	5.2	0.02		
1,607.0	0.20	62.77	1,607.0	4.8	-2.0	5.2	0.08		
1,707.0	0.31	41.69	1,707.0	5.1	-1.7	5.3	0.14		
1,807.0	0.02	344.78	1,807.0	5.3	-1.5	5.5	0.30		
1,907.0	0.15	67.00	1,907.0	5.4	-1.4	5.5	0.15		
2,007.0	0.32	29.71	2,007.0	5.7	-1.2	5.6	0.22		
2,107.0	0.07	47.01	2,107.0	6.0	-1.0	5.8	0.25		
2,207.0	0.13	64.53	2,207.0	6.1	-0.8	5.8	0.07		
2,307.0	0.06	121.08	2,307.0	6.1	-0.7	5.8	0.11		
2,407.0	0.08	94.28	2,407.0	6.1	-0.6	5.7	0.04		
2,507.0	0.22	185.52	2,507.0	5.9	-0.5	5.5	0.24		
2,607.0	1.07	55.01	2,607.0	6.2	0.2	5.5	1.22		
2,707.0	5.80	54.40	2,706.8	9.7	5.1	6.5	4.73		
2,807.0	9.63	50.85	2,805.8	17.9	15.7	9.2	3.86		
2,907.0	12.33	59.65	2,904.0	28.6	31.4	11.9	3.17		
3,007.0	15.35	61.80	3,001.1	40.2	52.3	13.2	3.06		
3,107.0	17.52	67.55	3,097.0	52.2	77.9	12.7	2.71		
3,207.0	19.00	71.63	3,192.0	63.1	107.2	9.6	1.95		
3,307.0	21.88	62.58	3,285.7	76.8	139.2	7.9	4.27		
3,407.0	23.98	62.76	3,377.8	94.7	173.9	8.7	2.10		
3,507.0	23.55	64.21	3,469.3	112.7	209.9	9.0	0.73		
3,607.0	25.37	59.78	3,560.3	132.2	246.4	10.5	2.58		
3,707.0	27.02	62.10	3,650.1	153.6	285.0	12.8	1.94		
3,807.0	26.38	61.75	3,739.4	174.8	324.7	14.4	0.66		
3,907.0	25.19	60.84	3,829.4	195.6	362.8	16.4	1.25		
4,007.0	25.58	61.09	3,919.8	216.5	400.3	18.6	0.40		
4,107.0	26.82	64.96	4,009.5	236.4	439.6	19.3	2.11		
4,207.0	25.84	64.11	4,099.1	255.5	479.7	18.8	1.05		
4,307.0	25.33	62.83	4,189.3	274.8	518.3	19.1	0.75		
4,407.0	26.13	63.18	4,279.4	294.5	557.0	19.9	0.81		
4,507.0	25.15	63.61	4,369.6	313.9	595.7	20.3	1.00		
4,607.0	25.82	66.38	4,459.9	332.0	634.7	19.5	1.37		
4,707.0	27.06	68.64	4,549.4	349.1	675.8	16.7	1.60		
4,807.0	27.47	69.30	4,638.3	365.5	718.6	12.7	0.51		
4,907.0	26.16	68.75	4,727.5	381.6	760.7	8.7	1.33		
5,007.0	25.93	68.11	4,817.4	397.8	801.5	5.2	0.36		
5,107.0	27.15	66.97	4,906.8	414.9	842.8	2.4	1.32		
5,207.0	26.47	65.34	4,996.1	433.1	881.1	0.7	1.00		
5,307.0	26.28	60.05	5,085.7	453.4	923.5	1.6	2.36		
5,407.0	28.27	57.20	5,174.6	477.3	962.6	5.9	2.38		

RECEIVED  
Office of Oil and Gas  
JUL 13 2015



EOW Completion Report



<b>Company:</b>	Antero Resources	<b>Local Co-ordinate Reference:</b>	Well Leggett Unit 2H
<b>Project:</b>	Doddridge County WV	<b>TVD Reference:</b>	Leggett 2H 990 GL + 18 KB @ 1008.0usft
<b>Site:</b>	Leggett/ Pike Pad	<b>MD Reference:</b>	Leggett 2H 990 GL + 18 KB @ 1008.0usft
<b>Well:</b>	Leggett Unit 2H	<b>North Reference:</b>	Grid
<b>Wellbore:</b>	Original Wellpath	<b>Survey Calculation Method:</b>	Minimum Curvature
<b>Design:</b>	As Drilled	<b>Database:</b>	Oklahoma District

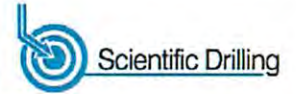
Survey

MD (usft)	Inc (°)	Azi (azimuth) (°)	TVD (usft)	N/S (usft)	E/W (usft)	V. Sec (usft)	DLeg (°/100usft)
5,507.0	26.29	59.30	5,263.4	501.5	1,001.6	10.5	2.20
5,579.5	25.10	63.03	5,328.8	516.6	1,029.1	12.0	2.77
5,627.0	24.46	64.58	5,371.9	525.4	1,046.9	12.1	1.92
5,719.0	26.00	64.09	5,455.1	542.4	1,082.3	11.8	1.69
5,812.0	25.34	64.08	5,538.9	560.0	1,118.5	11.7	0.71
5,905.0	23.53	62.91	5,623.6	577.2	1,152.9	12.0	2.01
5,997.0	24.59	63.05	5,707.6	594.2	1,186.4	12.6	1.15
6,090.0	23.47	61.49	5,792.6	611.8	1,219.9	13.7	1.38
6,183.0	25.17	62.36	5,877.3	629.8	1,253.7	15.0	1.87
6,213.0	25.17	61.49	5,904.5	635.8	1,264.9	15.5	1.23
6,244.0	25.22	65.60	5,932.5	641.7	1,276.7	15.6	5.65
6,275.0	25.50	72.95	5,960.5	646.4	1,289.1	14.3	10.19
6,306.0	27.31	78.85	5,988.3	649.7	1,302.5	11.5	10.28
6,337.0	29.56	82.00	6,015.6	652.2	1,317.0	7.3	8.72
6,368.0	31.12	83.98	6,042.3	654.1	1,332.6	2.2	5.98
6,399.0	28.40	78.16	6,069.2	656.4	1,347.8	-2.4	12.79
6,429.0	28.38	70.83	6,095.6	660.2	1,361.5	-5.0	11.61
6,460.0	28.49	64.01	6,122.9	665.9	1,375.1	-5.9	10.48
6,491.0	29.05	55.66	6,150.1	673.4	1,388.0	-4.8	13.08
6,522.0	28.87	48.41	6,177.2	682.6	1,399.8	-1.7	11.33
6,553.0	29.29	41.61	6,204.3	693.2	1,410.4	3.1	10.74
6,584.0	30.18	33.88	6,231.2	705.4	1,419.8	9.9	12.69
6,615.0	31.85	27.91	6,257.8	719.1	1,428.0	18.6	11.29
6,646.0	34.32	23.74	6,283.8	734.3	1,435.3	29.1	10.83
6,676.0	36.71	18.64	6,308.2	750.6	1,441.6	40.9	12.68
6,707.0	37.93	12.39	6,332.9	768.7	1,446.6	55.0	12.84
6,711.0	38.13	11.64	6,336.0	771.1	1,447.1	56.9	12.63
<b>Middlesex</b>							
6,738.0	39.62	6.75	6,357.0	787.8	1,449.8	70.8	12.63
6,769.0	42.64	2.63	6,380.4	808.1	1,451.5	88.3	13.09
6,800.0	45.24	359.12	6,402.7	829.6	1,451.8	107.5	11.49
6,831.0	48.03	356.19	6,424.0	852.1	1,450.8	128.1	11.32
6,862.0	51.66	354.34	6,444.0	875.7	1,448.9	150.2	12.57
6,883.0	53.76	352.80	6,456.7	892.3	1,447.0	165.9	11.58
<b>Burkett</b>							
6,893.0	54.77	352.10	6,462.6	900.4	1,445.9	173.6	11.58
6,923.0	58.47	352.80	6,479.1	925.2	1,442.6	197.4	12.49
6,931.0	59.38	352.74	6,483.2	932.0	1,441.8	203.8	11.34
<b>Tully</b>							
6,954.0	61.98	352.58	6,494.5	951.9	1,439.2	219.9	11.34
6,985.0	66.04	352.23	6,508.0	979.5	1,437.5	249.3	13.14
6,994.0	67.06	352.18	6,511.6	987.7	1,434.4	257.1	11.33
<b>Marcellus</b>							
7,016.0	69.55	352.06	6,519.7	1,007.9	1,431.6	322.6	11.33
7,047.0	73.58	352.30	6,529.5	1,037.0	1,427.6	304.4	13.02

RECEIVED  
 Office of Oil and Gas  
 JUL 13 2015  
 WV Department of Environmental Protection  
 COMPASS 5000.1 Build 70  
 08/14/2015



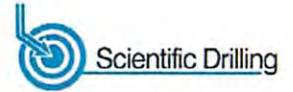
EOW Completion Report



<b>Company:</b> Antero Resources	<b>Local Co-ordinate Reference:</b> Well Leggett Unit 2H
<b>Project:</b> Doddridge County WV	<b>TVD Reference:</b> Leggett 2H 990 GL + 18 KB @ 1008.0usft
<b>Site:</b> Leggett/ Pike Pad	<b>MD Reference:</b> Leggett 2H 990 GL + 18 KB @ 1008.0usft
<b>Well:</b> Leggett Unit 2H	<b>North Reference:</b> Grid
<b>Wellbore:</b> Original Wellpath	<b>Survey Calculation Method:</b> Minimum Curvature
<b>Design:</b> As Drilled	<b>Database:</b> Oklahoma District

MD (usft)	Inc (°)	Azi (azimuth) (°)	TVD (usft)	N/S (usft)	E/W (usft)	V. Sec (usft)	DLeg (°/100usft)
7,078.0	78.91	349.52	6,536.9	1,066.8	1,422.9	333.2	19.27
7,113.0	84.42	349.57	6,542.0	1,100.8	1,416.6	366.6	15.74
7,144.0	89.96	348.60	6,543.5	1,131.2	1,410.7	396.4	18.14
7,175.0	91.27	345.44	6,543.2	1,161.4	1,403.8	426.6	11.03
7,206.0	91.80	341.66	6,542.3	1,191.1	1,395.0	457.2	12.31
7,299.0	92.59	332.78	6,538.8	1,276.7	1,359.0	549.9	9.58
7,391.0	91.36	330.93	6,535.6	1,357.8	1,315.7	641.7	2.41
7,484.0	90.40	328.56	6,534.2	1,438.1	1,268.8	734.5	2.75
7,577.0	89.08	330.67	6,534.6	1,518.3	1,221.8	827.2	2.68
7,669.0	89.25	330.14	6,535.9	1,598.3	1,176.3	919.0	0.60
7,762.0	89.08	331.02	6,537.3	1,679.3	1,130.7	1,011.9	0.96
7,854.0	89.78	334.89	6,538.2	1,761.2	1,088.9	1,103.8	4.27
7,947.0	90.31	332.95	6,538.1	1,844.7	1,048.0	1,196.8	2.16
8,040.0	89.66	334.68	6,538.2	1,928.2	1,006.9	1,289.8	1.99
8,132.0	90.40	333.66	6,538.1	2,011.0	966.8	1,381.8	1.37
8,225.0	88.99	333.22	6,538.6	2,094.2	925.3	1,474.8	1.59
8,318.0	89.25	333.39	6,540.0	2,177.3	883.5	1,567.8	0.33
8,411.0	89.78	333.75	6,540.8	2,260.5	842.1	1,660.8	0.69
8,503.0	90.04	334.62	6,541.0	2,343.4	802.0	1,752.8	0.99
8,596.0	90.31	335.77	6,540.7	2,427.8	763.0	1,845.7	1.27
8,689.0	91.01	336.29	6,539.6	2,512.7	725.2	1,938.7	0.94
8,781.0	90.22	333.13	6,538.6	2,595.9	685.9	2,030.7	3.54
8,874.0	89.16	333.83	6,539.1	2,679.1	644.4	2,123.6	1.37
8,967.0	89.34	334.01	6,540.3	2,762.6	603.5	2,216.6	0.27
9,059.0	89.87	333.31	6,541.0	2,845.1	562.7	2,308.6	0.95
9,152.0	90.31	333.22	6,540.8	2,928.2	520.9	2,401.6	0.48
9,245.0	90.57	333.31	6,540.1	3,011.2	479.0	2,494.6	0.30
9,337.0	91.19	333.22	6,538.7	3,093.4	437.7	2,586.6	0.68
9,430.0	89.52	334.71	6,538.1	3,176.9	396.8	2,679.6	2.41
9,523.0	89.73	334.48	6,538.7	3,260.9	357.0	2,772.6	0.33
9,615.0	89.87	334.62	6,539.1	3,344.0	317.4	2,864.6	0.22
9,708.0	90.04	334.10	6,539.1	3,427.8	277.2	2,957.6	0.59
9,801.0	90.75	333.48	6,538.5	3,511.3	236.1	3,050.6	1.01
9,893.0	91.01	333.31	6,537.1	3,593.5	194.9	3,142.6	0.34
9,986.0	91.01	333.22	6,535.4	3,676.6	153.1	3,235.5	0.10
10,080.0	89.16	333.66	6,535.3	3,760.6	111.0	3,329.5	2.02
10,175.0	88.99	333.04	6,536.8	3,845.5	68.4	3,424.5	0.68
10,269.0	89.43	332.50	6,538.1	3,929.1	25.4	3,518.5	0.74
10,364.0	89.87	332.78	6,538.7	4,013.5	-18.2	3,613.5	0.55
10,458.0	89.43	332.87	6,539.3	4,097.1	-61.2	3,707.4	0.48
10,552.0	89.96	331.72	6,539.8	4,180.3	-104.9	3,801.4	1.35
10,647.0	89.96	334.10	6,539.9	4,264.9	-148.1	3,896.4	2.51
10,741.0	90.40	336.29	6,539.6	4,350.2	-187.5	3,990.3	2.38
10,836.0	90.84	336.38	6,538.5	4,437.2	-225.7	4,085.3	0.47

RECEIVED  
Office of Oil and Gas  
JUL 13 2015



<b>Company:</b>	Antero Resources	<b>Local Co-ordinate Reference:</b>	Well Leggett Unit 2H
<b>Project:</b>	Doddridge County WV	<b>TVD Reference:</b>	Leggett 2H 990 GL + 18 KB @ 1008.0usft
<b>Site:</b>	Leggett/ Pike Pad	<b>MD Reference:</b>	Leggett 2H 990 GL + 18 KB @ 1008.0usft
<b>Well:</b>	Leggett Unit 2H	<b>North Reference:</b>	Grid
<b>Wellbore:</b>	Original Wellpath	<b>Survey Calculation Method:</b>	Minimum Curvature
<b>Design:</b>	As Drilled	<b>Database:</b>	Oklahoma District

**Survey**

MD (usft)	Inc (°)	Azi (azimuth) (°)	TVD (usft)	N/S (usft)	E/W (usft)	V. Sec (usft)	DLeg (°/100usft)
10,931.0	90.92	336.91	6,537.1	4,524.4	-263.3	4,180.1	0.56
11,025.0	89.96	334.10	6,536.3	4,610.0	-302.3	4,274.1	3.16
11,120.0	90.75	334.45	6,535.8	4,695.5	-343.5	4,369.1	0.91
11,212.0	89.34	333.75	6,535.7	4,778.3	-383.7	4,461.1	1.71
11,305.0	89.87	333.92	6,536.3	4,861.8	-424.7	4,554.1	0.60
11,398.0	90.57	332.78	6,536.0	4,944.9	-466.4	4,647.1	1.44
11,490.0	91.36	332.95	6,534.4	5,026.7	-508.4	4,739.0	0.88
11,583.0	89.69	332.60	6,533.6	5,109.4	-550.9	4,832.0	1.83
11,676.0	90.04	332.87	6,533.8	5,192.1	-593.5	4,925.0	0.48
11,768.0	90.75	332.69	6,533.2	5,273.9	-635.6	5,017.0	0.80
11,861.0	90.57	335.15	6,532.1	5,357.4	-676.5	5,110.0	2.65
11,953.0	90.84	334.71	6,531.0	5,440.8	-715.5	5,201.9	0.56
12,046.0	89.36	334.57	6,530.8	5,524.8	-755.3	5,294.9	1.60
12,139.0	89.60	334.27	6,531.6	5,608.7	-795.5	5,387.9	0.41
12,231.0	89.60	334.27	6,532.3	5,691.5	-835.4	5,479.9	0.00
12,324.0	89.96	333.66	6,532.6	5,775.1	-876.2	5,572.9	0.76
12,417.0	90.22	333.13	6,532.5	5,858.3	-917.9	5,665.9	0.63
12,509.0	90.66	333.66	6,531.8	5,940.5	-959.1	5,757.9	0.75
12,602.0	91.01	333.57	6,530.4	6,023.8	-1,000.4	5,850.9	0.39
12,695.0	89.87	334.54	6,529.7	6,107.4	-1,041.1	5,943.9	1.61
12,787.0	89.87	335.15	6,529.9	6,190.7	-1,080.2	6,035.9	0.66
12,880.0	90.48	335.50	6,529.6	6,275.2	-1,119.0	6,128.8	0.76
12,972.0	91.89	335.24	6,527.7	6,358.8	-1,157.3	6,220.8	1.56
13,046.0	92.51	335.15	6,524.9	6,426.0	-1,188.4	6,294.7	0.85
13,103.0	92.51	335.15	6,522.4	6,477.6	-1,212.3	6,351.7	0.00

**Design Annotations**

Measured Depth (usft)	Vertical Depth (usft)	Local Coordinates		Comment
		+N-S (usft)	+E-W (usft)	
6,711.0	6,336.0	771.1	1,447.1	Middlesex
6,883.0	6,456.7	892.3	1,447.0	Burkett
6,931.0	6,483.2	932.0	1,441.8	Tully
6,994.0	6,511.6	987.7	1,434.4	Marcellus

Checked By: \_\_\_\_\_ Approved By: \_\_\_\_\_ Date: \_\_\_\_\_

RECEIVED  
Office of Oil and Gas

JUL 13 2015

WV Department of  
Environmental Protection