

RECEIVED

MAR 23 2016

Page \_\_\_ of \_\_\_

WR-35  
Rev. 8/23/13

State of West Virginia  
Department of Environmental Protection - Office of Oil and Gas  
Well Operator's Report of Well Work

WV GEOLOGICAL SURVEY  
MORGANTOWN, WV

API 47-017-06303 County Doddridge District Grant  
Quad Smithburg 7.5' Pad Name RJ Smith Field/Pool Name ---  
Farm name Smith, Robert J. Well Number Gibson Unit 1H  
Operator (as registered with the OOG) Antero Resources Corporation  
Address 1615 Wynkoop St. City Denver State CO Zip 80202

As Drilled location NAD 83/UTM Attach an as-drilled plat, profile view, and deviation survey  
Top hole Northing 4357399m Easting 523022m  
Landing Point of Curve Northing 4357394.28m Easting 522741.30m  
Bottom Hole Northing 4360101m Easting 521651m

Elevation (ft) 998' GL Type of Well  New  Existing Type of Report  Interim  Final  
Permit Type  Deviated  Horizontal  Horizontal 6A  Vertical Depth Type  Deep  Shallow  
Type of Operation  Convert  Deepen  Drill  Plug Back  Redrilling  Rework  Stimulate  
Well Type  Brine Disposal  CBM  Gas  Oil  Secondary Recovery  Solution Mining  Storage  Other \_\_\_\_\_  
Type of Completion  Single  Multiple Fluids Produced  Brine  Gas  NGL  Oil  Other \_\_\_\_\_  
Drilled with  Cable  Rotary

Drilling Media Surface hole  Air  Mud  Fresh Water Intermediate hole  Air  Mud  Fresh Water  Brine  
Production hole  Air  Mud  Fresh Water  Brine

Mud Type(s) and Additive(s)

Air- Foam & 4% KCL

Mud- Polymer

Date permit issued 8/15/2013 Date drilling commenced 2/22/2015 Date drilling ceased 6/27/2015  
Date completion activities began 11/5/2015 Date completion activities ceased 1/29/2016  
Verbal plugging (Y/N) N/A Date permission granted N/A Granted by N/A

Please note: Operator is required to submit a plugging application within 5 days of verbal permission to plug

Freshwater depth(s) ft 181', 237' Open mine(s) (Y/N) depths No  
Salt water depth(s) ft 804', 1267', 1350', 1431' Void(s) encountered (Y/N) depths No  
Coal depth(s) ft None Identified Cavern(s) encountered (Y/N) depths No  
Is coal being mined in area (Y/N) No

Reviewed by:

API 47-017 - 06303 Farm name Smith, Robert J. Well number Gibson Unit 1H

CASING STRINGS	Hole Size	Casing Size	Depth	New or Used	Grade wt/ft	Basket Depth(s)	Did cement circulate (Y/ N) * Provide details below*
Conductor	30"	20"	40'	New	94# J-55	N/A	Y
Surface	17- 1/2"	13- 3/8"	515'	New	48# H-40	N/A	Y*
Coal							
Intermediate 1	12-1/4"	9-5/8"	2550'	New	36# J-55	N/A	Y
Intermediate 2							
Intermediate 3							
Production	8-3/4" & 8-1/2"	5-1/2"	16892'	New	23# P-110	N/A	Y
Tubing		2-3/8"	7094'		4.7# N-80	N/A	
Packer type and depth set		N/A					

Comment Details \_\_\_\_\_

CEMENT DATA	Class/Type of Cement	Number of Sacks	Slurry wt (ppg)	Yield (ft <sup>3</sup> /sks)	Volume (ft <sup>3</sup> )	Cement Top (MD)	WOC (hrs)
Conductor	Class A	193 sx	15.6	1.18	38	0'	8 Hrs.
Surface	Class A	612 sx	15.6	1.18	358	0'	8 Hrs.
Coal							
Intermediate 1	Class A	987 sx	15.6	1.18	799	0'	8 Hrs.
Intermediate 2							
Intermediate 3							
Production	Class H	1053 sx (Lead) 1610 sx (Tail)	14.2 Lead 14.85 Tail	1.24 Lead 1.81 Tail	3421	~500' into Intermediate Casing	8 Hrs.
Tubing							

Drillers TD (ft) 16892' MD, 6822' TVD (BHL), 6870' (Deepest Point Drilled) Loggers TD (ft) 16892'  
 Deepest formation penetrated Marcellus Plug back to (ft) N/A  
 Plug back procedure N/A

Kick off depth (ft) 6386'

Check all wireline logs run  caliper  density  deviated/directional  induction  neutron  resistivity  gamma ray  temperature  sonic

Well cored  Yes  No  Conventional  Sidewall Were cuttings collected  Yes  No

DESCRIBE THE CENTRALIZER PLACEMENT USED FOR EACH CASING STRING \_\_\_\_\_

Conductor- 0  
 Surface- 1 above guide shoe, 1 above insert float, 1 every 4th joint to surface  
 Intermediate- 1 above float joint, 1 above float collar, 1 every 4th joint to surface  
 Production- 1 above float joint, 1 below float collar, 1 every 3rd joint to top of cement

WAS WELL COMPLETED AS SHOT HOLE  Yes  No DETAILS \_\_\_\_\_

WAS WELL COMPLETED OPEN HOLE?  Yes  No DETAILS \_\_\_\_\_

WERE TRACERS USED  Yes  No TYPE OF TRACER(S) USED \_\_\_\_\_

\*\* This is a subsequent well. Antero only runs wireline logs on one well on a multi-well pad (Duff Unit 2H API #47-017-06247). Please reference the wireline logs submitted with Form WR-35 for Duff Unit 2H. A Cement Bond Log has been included with this submittal.



API 47- 017 - 06303 Farm name Smith, Robert J. Well number Gibson Unit 1H

<u>PRODUCING FORMATION(S)</u>	<u>DEPTHS</u>	
<u>Marcellus</u>	<u>6813' (TOP)</u> TVD	<u>7189' (TOP)</u> MD
_____	_____	_____
_____	_____	_____
_____	_____	_____

Please insert additional pages as applicable.

GAS TEST  Build up  Drawdown  Open Flow OIL TEST  Flow  Pump

SHUT-IN PRESSURE Surface 3550 psi Bottom Hole --- psi DURATION OF TEST --- hrs

OPEN FLOW Gas 2873 mcfpd Oil 7 bpd NGL --- bpd Water 0 bpd GAS MEASURED BY  Estimated  Orifice  Pilot

LITHOLOGY/ FORMATION	TOP	BOTTOM	TOP	BOTTOM	DESCRIBE ROCK TYPE AND RECORD QUANTITY AND TYPE OF FLUID (FRESHWATER, BRINE, OIL, GAS, H <sub>2</sub> S, ETC)
	DEPTH IN FT NAME TVD	DEPTH IN FT TVD	DEPTH IN FT MD	DEPTH IN FT MD	
	<u>0</u>		<u>0</u>		

**\*PLEASE SEE ATTACHED EXHIBIT 3**

Please insert additional pages as applicable.

Drilling Contractor Precision Drilling Company LP  
Address 2640 Reach Rd. City Williamsport State PA Zip 17701

Logging Company Rush Wellsite Services  
Address 600 Alpha Drive City Canonsburg State PA Zip 15317

Cementing Company Allied Gas & Oil Services, LLC  
Address 1036 East Main St. City Bridgeport State WV Zip 26330

Stimulating Company Baker Hughes  
Address 837 Philippi Pike City Clarksburg State WV Zip 26301

Please insert additional pages as applicable.

Completed by Kara Quackenbush Telephone 303-357-7233  
Signature *Kara Quackenbush* Title Permit Representative Date 3/17/2016



API 47-017-06303 Farm Name Smith, Robert J. Well Number Gibson Unit 1H

**EXHIBIT 1**

Stage No.	Perforation Date	Perforated from MD ft.	Perforated to MD ft.	Number of Perforations	Formations
1	5-Nov-15	16,631	16,800	60	Marcellus
2	9-Dec-15	16,431	16,600	60	Marcellus
3	9-Dec-15	16,231	16,400	60	Marcellus
4	9-Dec-15	16,031	16,200	60	Marcellus
5	10-Dec-15	15,831	16,000	60	Marcellus
6	10-Dec-15	15,631	15,800	60	Marcellus
7	10-Dec-15	15,431	15,599	60	Marcellus
8	10-Dec-15	15,231	15,399	60	Marcellus
9	11-Dec-15	15,030	15,199	60	Marcellus
10	11-Dec-15	14,830	14,999	60	Marcellus
11	11-Dec-15	14,630	14,799	60	Marcellus
12	11-Dec-15	14,430	14,599	60	Marcellus
13	11-Dec-15	14,230	14,399	60	Marcellus
14	12-Dec-15	14,030	14,199	60	Marcellus
15	12-Dec-15	13,830	13,999	60	Marcellus
16	12-Dec-15	13,630	13,799	60	Marcellus
17	12-Dec-15	13,430	13,598	60	Marcellus
18	13-Dec-15	13,230	13,398	60	Marcellus
19	13-Dec-15	13,029	13,198	60	Marcellus
20	13-Dec-15	12,829	12,998	60	Marcellus
21	13-Dec-15	12,629	12,798	60	Marcellus
22	14-Dec-15	12,429	12,598	60	Marcellus
23	14-Dec-15	12,229	12,398	60	Marcellus
24	14-Dec-15	12,029	12,198	60	Marcellus
25	14-Dec-15	11,829	11,998	60	Marcellus
26	14-Dec-15	11,629	11,798	60	Marcellus
27	14-Dec-15	11,429	11,597	60	Marcellus
28	15-Dec-15	11,229	11,397	60	Marcellus
29	15-Dec-15	11,028	11,197	60	Marcellus
30	15-Dec-15	10,828	10,997	60	Marcellus
31	16-Dec-15	10,628	10,797	60	Marcellus
32	16-Dec-15	10,428	10,597	60	Marcellus
33	16-Dec-15	10,228	10,397	60	Marcellus
34	16-Dec-15	10,028	10,197	60	Marcellus
35	16-Dec-15	9,828	9,997	60	Marcellus
36	16-Dec-15	9,628	9,796	60	Marcellus
37	17-Dec-15	9,428	9,596	60	Marcellus
38	17-Dec-15	9,228	9,396	60	Marcellus
39	17-Dec-15	9,027	9,196	60	Marcellus
40	17-Dec-15	8,827	8,996	60	Marcellus
41	17-Dec-15	8,627	8,796	60	Marcellus
42	17-Dec-15	8,427	8,596	60	Marcellus
43	18-Dec-15	8,227	8,396	60	Marcellus
44	18-Dec-15	8,027	8,196	60	Marcellus
45	18-Dec-15	7,827	7,996	60	Marcellus
46	18-Dec-15	7,627	7,795	60	Marcellus
47	18-Dec-15	7,427	7,595	60	Marcellus
48	18-Dec-15	7,227	7,395	60	Marcellus

API 47-017-06303 Farm Name Smith, Robert J. Well Number Gibson Unit 1H

**EXHIBIT 2**

Stage No.	Stimulations Date	Avg Pump Rate	Avg Treatment Pressure (PSI)	Max Breakdown Pressure (PSI)	ISIP (PSI)	Amount of Proppant (lbs)	Amount of Water (bbls)	Amount of Nitrogen/ other (units)
1	8-Dec-15	60.7	7,027	5,846	5,256	251,829	6,530	N/A
2	9-Dec-15	67.6	7,120	6,255	5,317	250,384	6,495	N/A
3	9-Dec-15	67.0	7,089	5,997	5,483	250,690	6,519	N/A
4	9-Dec-15	68.0	7,298	5,856	4,582	251,199	6,527	N/A
5	10-Dec-15	69.0	7,359	5,738	5,301	251,787	6,421	N/A
6	10-Dec-15	70.0	7,130	5,870	5,076	249,833	6,355	N/A
7	10-Dec-15	69.0	7,122	5,775	5,509	249,680	6,404	N/A
8	10-Dec-15	69.0	7,196	5,579	5,023	248,809	6,345	N/A
9	11-Dec-15	69.0	7,234	5,881	5,373	245,059	6,351	N/A
10	11-Dec-15	58.0	7,368	5,820	5,253	226,545	6,418	N/A
11	11-Dec-15	70.0	7,090	5,985	5,157	251,401	6,373	N/A
12	11-Dec-15	68.6	6,959	5,607	5,530	250,591	6,367	N/A
13	11-Dec-15	69.5	7,024	5,694	5,519	250,127	6,289	N/A
14	12-Dec-15	74.0	7,148	5,679	5,379	250,845	6,357	N/A
15	12-Dec-15	71.0	7,094	5,500	5,314	249,814	6,430	N/A
16	12-Dec-15	72.9	6,919	5,627	4,933	250,999	6,412	N/A
17	12-Dec-15	73.5	7,051	5,866	5,422	251,388	6,399	N/A
18	13-Dec-15	72.4	6,982	5,658	5,259	252,030	6,408	N/A
19	13-Dec-15	69.7	7,083	5,680	5,704	232,025	6,010	N/A
20	13-Dec-15	69.1	6,796	5,548	5,149	250,840	6,189	N/A
21	13-Dec-15	71.8	6,901	5,617	5,439	251,773	6,306	N/A
22	14-Dec-15	72.1	6,880	5,750	5,422	250,673	6,284	N/A
23	14-Dec-15	73.0	6,743	5,535	5,054	250,648	6,349	N/A
24	14-Dec-15	72.3	6,646	5,636	5,208	250,554	6,175	N/A
25	14-Dec-15	71.3	6,672	5,452	5,459	249,475	6,172	N/A
26	14-Dec-15	70.9	6,726	5,457	5,383	249,945	6,106	N/A
27	14-Dec-15	69.6	6,968	5,530	5,197	239,568	6,083	N/A
28	15-Dec-15	70.1	6,722	5,680	5,302	250,804	6,257	N/A
29	15-Dec-15	70.9	7,086	5,623	5,684	225,000	5,994	N/A
30	15-Dec-15	70.9	6,686	5,508	5,083	252,987	6,331	N/A
31	16-Dec-15	69.9	6,735	5,557	5,560	251,900	6,251	N/A
32	16-Dec-15	69.9	6,979	5,532	4,979	213,734	6,786	N/A
33	16-Dec-15	71.9	6,689	5,563	5,832	252,509	6,326	N/A
34	16-Dec-15	71.7	6,944	5,490	5,194	251,946	6,393	N/A
35	16-Dec-15	69.7	6,880	5,512	5,131	250,823	6,223	N/A
36	16-Dec-15	69.0	6,881	5,578	4,944	211,026	6,552	N/A
37	17-Dec-15	69.9	7,053	5,716	5,460	251,314	6,089	N/A
38	17-Dec-15	69.8	6,581	5,694	5,271	252,902	6,213	N/A
39	17-Dec-15	70.5	6,533	5,619	4,968	251,538	6,109	N/A
40	17-Dec-15	72.0	6,536	5,526	4,985	251,747	6,154	N/A
41	17-Dec-15	70.6	6,687	5,611	5,045	252,262	6,093	N/A
42	17-Dec-15	70.5	7,071	5,593	5,218	163,368	6,290	N/A
43	18-Dec-15	68.6	6,685	5,619	4,364	252,043	6,152	N/A
44	18-Dec-15	71.3	6,589	5,648	4,323	251,898	6,085	N/A
45	18-Dec-15	70.6	6,486	5,471	5,731	250,096	6,041	N/A
46	18-Dec-15	70.1	6,735	5,481	5,453	243,594	6,140	N/A
47	18-Dec-15	68.8	6,605	5,607	4,510	251,768	6,180	N/A
48	18-Dec-15	70.2	6,232	5,717	3,710	252,345	6,030	N/A
<b>AVG=</b>		<b>69.9</b>	<b>6,896</b>	<b>5,662</b>	<b>5,197</b>	<b>11,794,115</b>	<b>301,763</b>	<b>TOTAL</b>

API 47-017-06303 Farm Name Smith, Robert J. Well Number Gibson Unit 1H

**EXHIBIT 3**

LITHOLOGY/ FORMATION	TOP DEPTH (TVD) From Surface	BOTTOM DEPTH (TVD) From Surface	TOP DEPTH (MD) From Surface	BOTTOM DEPTH (MD) From Surface
Fresh Water	181'	N/A	181'	N/A
Fresh Water	237'	N/A	237'	N/A
Siltstone	0	427	0	427
Sandstone	est. 427	597	est. 427	597
Dolostone/Sandstone/Siltstone	est. 597	637	est. 597	637
Sandstone and Siltstone w/trace coal	est. 637	697	est. 637	697
Siltstone	est. 697	877	est. 697	877
Shale	est. 877	1027	est. 877	1027
Sandstone	est. 1027	1107	est. 1027	1107
Sandstone w/trace coal	est. 1107	1197	est. 1107	1197
Sandstone	est. 1197	1527	est. 1197	1527
Siltstone	est. 1527	1587	est. 1527	1587
Sandstone	est. 1587	1647	est. 1587	1647
Shale	est. 1647	1707	est. 1647	1707
Sandstone	est. 1707	1737	est. 1707	1737
Shale	est. 1737	1867	est. 1737	1867
Siltstone	est. 1867	2008	est. 1867	2010
Big Lime	2008	2113	2010	2116
Big Injun	2113	2555	2116	2558
Gantz Sand	2555	2690	2558	2693
Fifty Foot Sandstone	2690	2781	2693	2784
Gordon	2781	3142	2784	3145
Fifth Sandstone	3142	3156	3145	3159
Bayard	3156	3500	3159	3503
Warren	3500	3889	3503	3892
Speechley	3889	4600	3892	4603
Bradford	4600	5083	4603	5088
Benson	5083	5349	5088	5363
Alexander	5349	5542	5363	5571
Elk	5542	6049	5571	6135
Rhinestreet	6049	6409	6135	6550
Sycamore	6409	6593	6550	6767
Middlesex	6593	6727	6767	6968
Burkett	6727	6757	6968	7028
Tully	6757	6813	7028	7189
Marcellus	6813	NA	7189	NA

\*Please note Antero determines formation tops based on mud logs that are only run on one well on a multi-well pad. The measured Depth (MD) data on subsequent wells may be slightly different due to the well's unique departure.



# Hydraulic Fracturing Fluid Product Component Information Disclosure

Job Start Date:	12/8/2015
Job End Date:	12/18/2015
State:	West Virginia
County:	Doddridge
API Number:	47-017-06303-00-00
Operator Name:	Antero Resources Corporation
Well Name and Number:	Gibson Unit 1H
Longitude:	-80.74867000
Latitude:	39.38985000
Datum:	NAD27
Federal/Tribal Well:	NO
True Vertical Depth:	6,869
Total Base Water Volume (gal):	13,288,380
Total Base Non Water Volume:	0



## Hydraulic Fracturing Fluid Composition:

Trade Name	Supplier	Purpose	Ingredients	Chemical Abstract Service Number (CAS #)	Maximum Ingredient Concentration in Additive (% by mass)**	Maximum Ingredient Concentration in HF Fluid (% by mass)**	Comments
Water	Operator	Carrier	Water	7732-18-5	100.00000	89.98957	
Sand, White	Baker Hughes	Proppant	Other Chemicals	NA		9.57939	
HCl, 20.1 - 28%	Baker Hughes	Acidizing	Other Chemicals	NA		0.21271	
GW-3LDF	Baker Hughes	Gelling Agent	Other Chemicals	NA		0.11816	
FRW-18	Baker Hughes	Friction Reducer	Other Chemicals	NA		0.01912	
Alpha 1427	Baker Hughes	Biocide	Other Chemicals	NA		0.00431	
Enzyme G-NE	Baker Hughes	Breaker	Other Chemicals	NA		0.00059	
Ingredients shown above are subject to 29 CFR 1910.1200(i) and appear on Material Safety Data Sheets (MSDS). Ingredients shown below are Non-MSDS.							
		Other Chemicals	Crystalline Silica (Quartz)	14808-60-7		9.58376	
			Hydrochloric Acid	7647-01-0		0.05956	
			Guar Gum	9000-30-0		0.05251	



	Petroleum Distillates	64742-47-8	0.04537
	Paraffinic Petroleum Distillate	64742-55-8	0.02626
	Poly (acrylamide-co-acrylic acid) partial sodium salt	62649-23-4	0.01912
	Ethylene Glycol	107-21-1	0.00488
	Isotridecanol, ethoxylated	9043-30-5	0.00438
	Sodium Chloride	7647-14-5	0.00335
	2-propenoic, polymer with sodium phosphinate, sodium salt	71050-62-9	0.00325
	Glutaraldehyde	111-30-8	0.00259
	Ammonium Chloride	12125-02-9	0.00191
	Oleamide DEA	93-83-4	0.00127
	Ethoxylated Alcohol	68551-12-2	0.00127
	Didecyl Dimethyl Ammonium Chloride	7173-51-5	0.00086
	Calcium Chloride	10043-52-4	0.00081
	Ethanol	64-17-5	0.00043
	Quaternary Ammonium Compound	68424-85-1	0.00043
	Sorbitan Monooleate	1338-43-8	0.00032
	Polyoxyethylene Sorbitan Monooleate	9005-65-6	0.00032
	Potassium Chloride	7447-40-7	0.00016
	2-Butoxy-1-Propanol	15821-83-7	0.00009
	Hemicellulase Enzyme Concentrate	9025-56-3	0.00003

\* Total Water Volume sources may include fresh water, produced water, and/or recycled water

\*\* Information is based on the maximum potential for concentration and thus the total may be over 100%

Note: For Field Development Products (products that begin with FDP), MSDS level only information has been provided  
 Ingredient information for chemicals subject to 29 CFR 1910.1200(i) and Appendix D are obtained from suppliers Material Safety Data Sheets (MSDS)



LATITUDE 39°22'30"

6,954'

9,697' TO BOTTOM HOLE

LATITUDE 39°25'00"

LONGITUDE 80°42'30"

LONGITUDE 80°42'30"

LONGITUDE 80°42'30"

LONGITUDE 80°42'30"

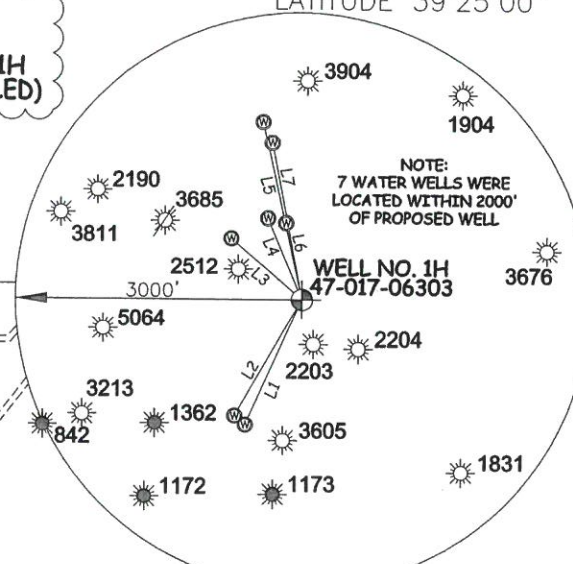
LONGITUDE 80°42'30"

LONGITUDE 80°42'30"

LONGITUDE 80°42'30"

LONGITUDE 80°42'30"

Antero Resources Corporation  
Well No. Gibson Unit 1H  
47-017-06303 (AS DRILLED)

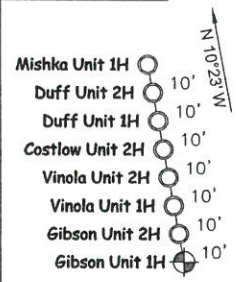


AS DRILLED DATA:  
WELL 1H TOP HOLE INFORMATION:  
N: 317,683ft E: 1,651,423ft  
LAT: 39°21'56.38" LON: 80°43'58.54"  
BOTTOM HOLE INFORMATION:  
N: 326,624ft E: 1,647,074ft  
LAT: 39°23'24.15" LON: 80°44'55.50"  
WEST VIRGINIA COORDINATE SYSTEM OF 1927 NORTH ZONE. ZONE WAS DERIVED FROM MEASUREMENTS TAKEN WITH TRIMBLE GEOXT SUBMETER MAPPING GRADE GPS UNIT. PLAT ORIENTATION, CORNER, AND WELL REFERENCE TIE LINES ARE BASED ON GRID NORTH.

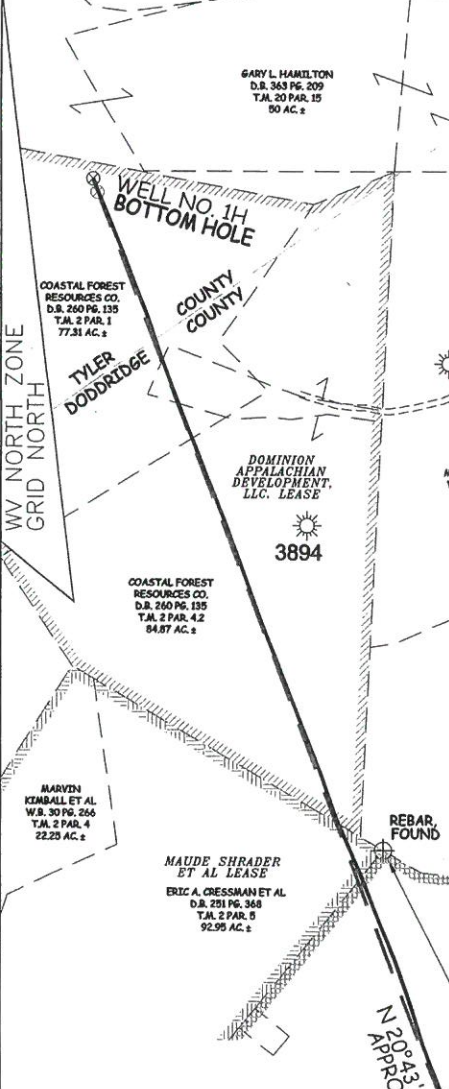
(NAD) 83 (UTM) ZONE 17 COORDS:  
WELL 1H TOP HOLE INFORMATION:  
N: 4,357,399m E: 523,022m  
BOTTOM HOLE INFORMATION:  
N: 4,360,101m E: 521,651m

- NOTE
1. ONE OCCUPIED DWELLING AND NO BUILDINGS TWO THOUSAND FIVE HUNDRED (2,500) SQUARE FEET OR LARGER USED TO HOUSE OR SHELTER DAIRY CATTLE OR POULTRY HUSBANDRY ARE LOCATED WITHIN SIX HUNDRED TWENTY-FIVE (625) FEET OF THE CENTER OF THE WELL PAD.
  2. TOP HOLE DATA SHOWN HEREON WAS PROVIDED BY ALLEGHENY SURVEYS, INC.
  3. AS DRILLED DATA WAS PROVIDED BY ANTERO RESOURCES CORPORATION.
  4. WLS IS NOT CERTIFYING THE DATA AND INFORMATION PROVIDED LISTED IN NOTES 2 AND 3, ONLY THE RELATIONSHIP TO THE DATA AND INFORMATION PROVIDED TO THE LEASE BOUNDARIES.
  5. WLS IS BY NO MEANS RESPONSIBLE FOR ANY ERRORS OR INACCURACIES WITH THE DATA AND INFORMATION THAT HAS BEEN PROVIDED.

PAD LAYOUT



NOT TO SCALE



WATER WELL TIES

LINE	BEARING	DISTANCE
L1	S 25°24' W	1,398.0'
L2	S 31°15' W	1,368.5'
L3	N 47°35' W	1,007.0'
L4	N 22°05' W	962.1'
L5	N 12°08' W	1,941.7'
L6	N 11°36' W	859.3'
L7	N 10°33' W	1,710.2'

JOB # 12-138WA  
DRAWING # GIBSONHAD  
SCALE 1" = 1000'  
MINIMUM DEGREE OF ACCURACY SUBMETER  
PROVEN SOURCE OF ELEV. SUBMETER MAPPING GRADE GPS

LEGEND

- Surface Owner Boundary Lines +/-
- Interior Surface Tracts +/-
- Existing Fence
- Found monument, as noted
- Proposed Well Path
- As Drilled Well Path

DATE 08/14/15  
OPERATOR'S WELL# GIBSON UNIT #1H



STATE OF WEST VIRGINIA, DIVISION OF ENVIRONMENTAL PROTECTION, OFFICE OF OIL AND GAS  
WILLOW LAND SURVEYING PLLC  
220 MASONIC AVE. PENNSBORO WEST VIRGINIA 26415

STATE OF WEST VIRGINIA DEPARTMENT OF ENERGY DIVISION OF OIL AND GAS  
API WELL # 47 - 017 - 06303  
STATE COUNTY PERMIT  
WELL TYPE: OIL GAS X LIQUID INJECTION WASTE DISPOSAL  
(IF "GAS") PRODUCTION X STORAGE DEEP SHALLOW X  
LOCATION: ELEVATION 1,004' ORIGINAL - 998' AS DRILLED WATERSHED MCELROY CREEK  
QUADRANGLE SMITHBURG 7.5 (TH) CENTERPOINT 7.5 (BH) DISTRICT GRANT COUNTY DODDRIDGE  
SURFACE OWNER ROBERT J. SMITH ACREAGE 100 ACRES +/-  
OIL & GAS ROYALTY OWNER VINOLA BOSSALA; DUFF MISHKA; SILAS ASH; KENNETH HAMILTON ET AL; BEULAH CAYTON ET AL; MAUDE SHRADER ET AL; DOMINION APPALACHIAN DEV. LLC.  
LEASE ACREAGE 120 ACRES±; 41 ACRES±; 120 ACRES±; 80 ACRES±; 123.5 ACRES±; 114.5 ACRES±; 167.29 ACRES±

PROPOSED WORK: DRILL CONVERT DRILL DEEPER REDRILL FRACTURE OR STIMULATE  
PLUG OFF OLD FORMATION PERFORATE NEW FORMATION OTHER PHYSICAL CHANGE IN WELL  
(SPECIFY) (X) AS DRILLED PLUG & ABANDON CLEAN OUT & REPLUG  
TARGET FORMATION MARCELLUS ESTIMATED DEPTH 6,822' TVD 16,892' MD  
WELL OPERATOR ANTERO RESOURCES CORP. DESIGNATED AGENT DIANNA STAMPER  
ADDRESS 1615 WYNKOOP STREET ADDRESS 5400 D BIG TYLER ROAD  
DENVER, CO 80202 CHARLESTON, WV 25313

RECEIVED  
MAR 23 2016  
WV GEOLOGICAL SURVEY  
MORGANTOWN WV