

RECEIVED

JUL 20 2015

WV GEOLOGICAL SURVEY  
MORGANTOWN, WV



**Proudfoot Unit 2H**  
Doddridge County WV  
Northing: 14238600.69  
Easting: 1714306.91  
As Drilled

P317 Proudfoot 2H 1275 GL-22.5 KB @ 1297.5usft  
1275.0

**WELL DETAILS** Proudfoot Unit 2H

Ground Level: 1275.0  
Easting: 1714306.69  
Northing: 14238600.69  
Longitude: 44° 20' 09.00" W  
Latitude: 12° 36' 04.80" N

**SITE DETAILS:** Hameil/Lick Run/Proudfoot/Sibley P

SHL Proudfoot Unit 2H  
Site Centre Northing: 14238600.69  
Easting: 1714306.91  
Positional Uncertainty: 0.0  
Convergence: 0.16  
Local North: Grid

**PROJECT DETAILS:** Doddridge County WV

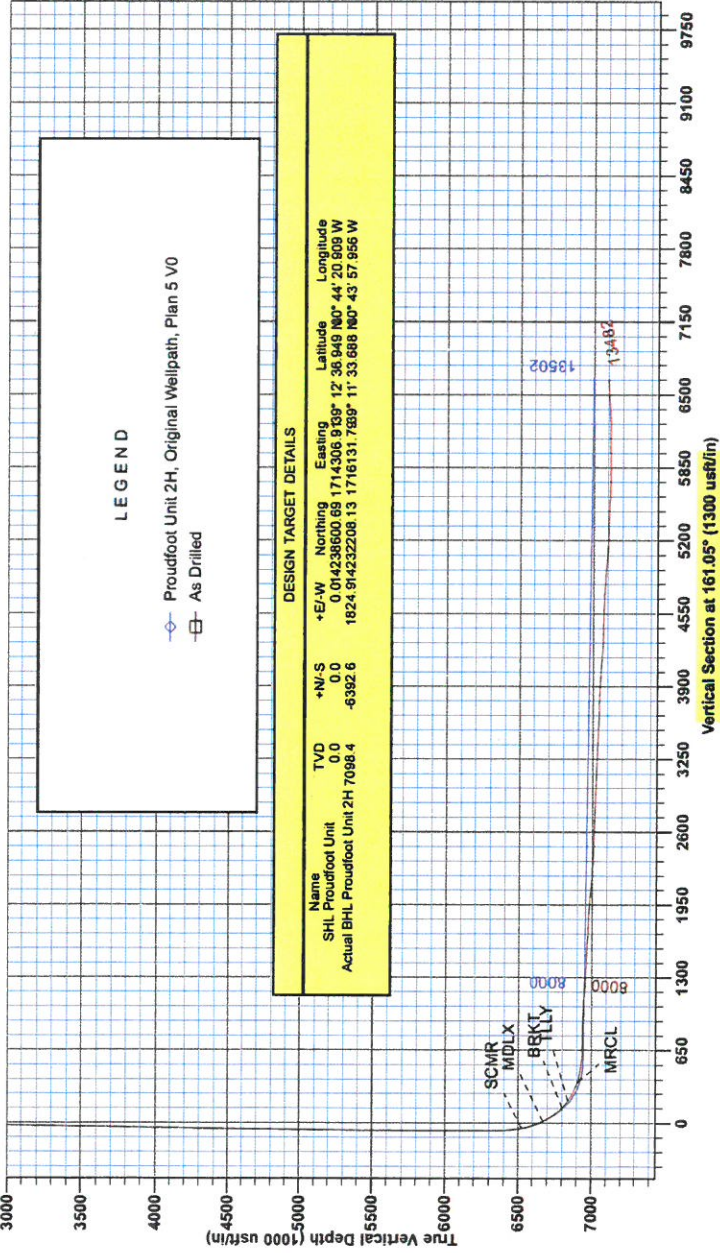
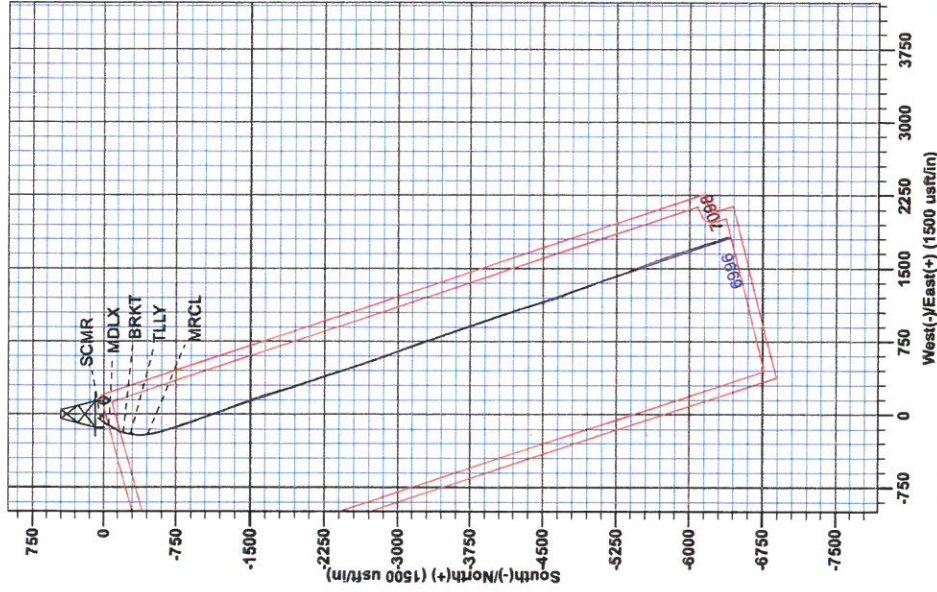
Geodetic System: Universal Transverse Mercator (US Survey Feet)  
Datum: NAD 1927 (NADCON CONUS)  
Ellipsoid: Clarke 1866  
Zone: Zone 17N (84 W to 78 W)  
System Datum: Mean Sea Level

Genie Lightfoot  
14:38, August 19 2014  
Scientific Drilling  
421 South Eagle Lane  
Oklahoma City, OK



Azimuths to Grid North  
True North: -0.17°  
Magnetic North: -8.64°  
Magnetic Field  
Strength: 52276.8anT  
Dip Angle: 66.77°  
Date: 3/20/2014  
Model: IGRF2010

To convert Magnetic North to Grid, Subtract 8.64°  
To convert True North to Grid, Subtract 0.16°



**LEGEND**

- Proudfoot Unit 2H, Original Wellpath, Plan 5 V0
- As Drilled

**DESIGN TARGET DETAILS**

Name	TVD	+N/-S	+E/-W	Northing	Easting	Latitude	Longitude
SHL Proudfoot Unit	0.0	0.0	0.0	0.014238600.69	1714306.91	12° 36' 04.80" N	44° 20' 09.00" W
Actual BHL Proudfoot Unit 2H 7098.4	7098.4	-6392.6	1824.91	4232208.13	1716131.7689	11° 33' 68.86" N	43° 57' 56.56" W



RECEIVED  
JUL 20 2015  
WV GEOLOGICAL SURVEY  
MORGANTOWN, WV

## **Antero Resources**

**Doddridge County WV  
Harriet/Lick Run/Proudfoot/Sibley Pad  
Proudfoot Unit 2H  
Original Wellpath**

**Design: As Drilled**

## **EOW Completion Report**

**19 August, 2014**





EOW Completion Report



<b>Company:</b>	Antero Resources	<b>Local Co-ordinate Reference:</b>	Well Proudfoot Unit 2H
<b>Project:</b>	Doddridge County WV	<b>TVD Reference:</b>	P317 Proudfoot 2H 1275 GL + 22.5 KB @ 1297.5
<b>Site:</b>	Harriet/Lick Run/Proudfoot/Sibley Pad	<b>MD Reference:</b>	P317 Proudfoot 2H 1275 GL + 22.5 KB @ 1297.5
<b>Well:</b>	Proudfoot Unit 2H	<b>North Reference:</b>	Grid
<b>Wellbore:</b>	Original Wellpath	<b>Survey Calculation Method:</b>	Minimum Curvature
<b>Design:</b>	As Drilled	<b>Database:</b>	Oklahoma District

<b>Project</b>	Doddridge County WV, McClellan District		
<b>Map System:</b>	Universal Transverse Mercator (US Survey Feet)	<b>System Datum:</b>	Mean Sea Level
<b>Geo Datum:</b>	NAD 1927 (NADCON CONUS)		
<b>Map Zone:</b>	Zone 17N (84 W to 78 W)		

<b>Site</b>	Harriet/Lick Run/Proudfoot/Sibley Pad, SHL Proudfoot Unit 2H				
<b>Site Position:</b>		<b>Northing:</b>	14,238,600.69 usft	<b>Latitude:</b>	39° 12' 36.949 N
<b>From:</b>	Map	<b>Easting:</b>	1,714,306.91 usft	<b>Longitude:</b>	80° 44' 20.909 W
<b>Position Uncertainty:</b>	0.0 usft	<b>Slot Radius:</b>	13-3/16"	<b>Grid Convergence:</b>	0.16 °

<b>Well</b>	Proudfoot Unit 2H, Marcellus					
<b>Well Position</b>	<b>+N/-S</b>	0.0 usft	<b>Northing:</b>	14,238,600.69 usft	<b>Latitude:</b>	39° 12' 36.949 N
	<b>+E/-W</b>	0.0 usft	<b>Easting:</b>	1,714,306.91 usft	<b>Longitude:</b>	80° 44' 20.909 W
<b>Position Uncertainty</b>	2.0 usft	<b>Wellhead Elevation:</b>	1,297.5 usft	<b>Ground Level:</b>	1,275.0 usft	

<b>Wellbore</b>	Original Wellpath				
<b>Magnetics</b>	<b>Model Name</b>	<b>Sample Date</b>	<b>Declination (°)</b>	<b>Dip Angle (°)</b>	<b>Field Strength (nT)</b>
	IGRF2010	3/20/2014	-8.48	66.77	52,277

<b>Design</b>	As Drilled				
<b>Audit Notes:</b>					
<b>Version:</b>	1.0	<b>Phase:</b>	ACTUAL	<b>Tie On Depth:</b>	0.0
<b>Vertical Section:</b>	<b>Depth From (TVD) (usft)</b>	<b>+N/-S (usft)</b>	<b>+E/-W (usft)</b>	<b>Direction (°)</b>	
	0.0	0.0	0.0	161.05	

<b>Survey Program</b>	Date 8/19/2014				
<b>From (usft)</b>	<b>To (usft)</b>	<b>Survey (Wellbore)</b>	<b>Tool Name</b>	<b>Description</b>	
107.5	6,135.0	Survey #1 Final Gyro (Original Wellpath)	SDI Standard Keeper	Scientific Drilling Intl. Standard Wireline Keeper	
6,169.0	13,482.0	Survey #2 MWD (Original Wellpath)	SDI MWD	Scientific Drilling Intl. MWD - Standard ver 1.0.1	

<b>Survey</b>	<b>MD (usft)</b>	<b>Inc (°)</b>	<b>Azi (azimuth) (°)</b>	<b>TVD (usft)</b>	<b>N/S (usft)</b>	<b>E/W (usft)</b>	<b>V. Sec (usft)</b>	<b>DLeg (°/100usft)</b>
	0.0	0.00	0.00	0.0	0.0	0.0	0.0	0.00
	107.5	0.18	332.45	107.5	0.1	-0.1	-0.2	0.17
	109.5	0.18	332.70	109.5	0.2	-0.1	-0.2	0.04
	159.5	0.23	331.63	159.5	0.3	-0.2	-0.3	0.10
	209.5	0.23	340.35	209.5	0.5	-0.2	-0.5	0.07
	259.5	0.21	336.73	259.5	0.7	-0.3	-0.7	0.05
	309.5	0.13	333.99	309.5	0.8	-0.4	-0.9	0.16
	359.5	0.10	319.03	359.5	0.9	-0.4	-1.0	0.08
	409.5	0.18	313.75	409.5	1.0	-0.5	-1.1	0.16
	459.5	0.31	307.84	459.5	1.1	-0.7	-1.3	0.26
	509.5	0.29	326.75	509.5	1.3	-0.9	-1.5	0.20

RECEIVED

JUL 20 2015



GEOLOGICAL SURVEY  
MORGANTOWN, WV

EOW Completion Report



**Company:** Antero Resources  
**Project:** Doddridge County WV  
**Site:** Harriet/Lick Run/Proudfoot/Sibley Pad  
**Well:** Proudfoot Unit 2H  
**Wellbore:** Original Wellpath  
**Design:** As Drilled

**Local Co-ordinate Reference:** Well Proudfoot Unit 2H  
**TVD Reference:** P317 Proudfoot 2H 1275 GL + 22.5 KB @ 1297.5  
**MD Reference:** P317 Proudfoot 2H 1275 GL + 22.5 KB @ 1297.5  
**North Reference:** Grid  
**Survey Calculation Method:** Minimum Curvature  
**Database:** Oklahoma District

Survey

MD (usft)	Inc (°)	Azi (azimuth) (°)	TVD (usft)	N/S (usft)	E/W (usft)	V. Sec (usft)	DLeg (°/100usft)
559.5	0.18	337.98	559.5	1.5	-1.0	-1.7	0.24
609.5	0.14	324.29	609.5	1.6	-1.0	-1.9	0.11
659.5	0.22	314.31	659.5	1.7	-1.1	-2.0	0.17
709.5	0.27	321.68	709.5	1.9	-1.3	-2.2	0.12
759.5	0.28	338.84	759.5	2.1	-1.4	-2.4	0.17
809.5	0.26	346.44	809.5	2.3	-1.5	-2.7	0.08
859.5	0.16	335.52	859.5	2.5	-1.5	-2.8	0.21
909.5	0.19	318.88	909.5	2.6	-1.6	-3.0	0.12
959.5	0.26	318.13	959.5	2.8	-1.7	-3.2	0.14
1,009.5	0.30	326.12	1,009.5	3.0	-1.9	-3.4	0.11
1,059.5	0.24	334.90	1,059.5	3.2	-2.0	-3.6	0.15
1,109.5	0.19	326.52	1,109.5	3.3	-2.1	-3.8	0.12
1,159.5	0.28	311.16	1,159.5	3.5	-2.2	-4.0	0.22
1,209.5	0.37	320.60	1,209.5	3.7	-2.4	-4.3	0.21
1,259.5	0.39	326.15	1,259.5	3.9	-2.6	-4.6	0.08
1,309.5	0.30	331.55	1,309.5	4.2	-2.8	-4.9	0.19
1,359.5	0.36	323.19	1,359.5	4.4	-2.9	-5.1	0.15
1,409.5	0.43	327.98	1,409.5	4.7	-3.1	-5.5	0.15
1,459.5	0.52	324.26	1,459.5	5.1	-3.3	-5.9	0.19
1,509.5	0.72	311.38	1,509.5	5.5	-3.7	-6.4	0.49
1,559.5	0.75	312.60	1,559.5	5.9	-4.2	-6.9	0.07
1,609.5	0.73	321.29	1,609.5	6.4	-4.6	-7.5	0.23
1,659.5	0.75	317.86	1,659.5	6.9	-5.1	-8.1	0.10
1,709.5	0.76	315.62	1,709.5	7.3	-5.5	-8.7	0.06
1,759.5	0.87	311.88	1,759.5	7.8	-6.0	-9.4	0.24
1,809.5	0.91	317.33	1,809.5	8.4	-6.6	-10.0	0.19
1,859.5	0.86	322.87	1,859.4	9.0	-7.1	-10.8	0.20
1,909.5	0.81	325.09	1,909.4	9.5	-7.5	-11.5	0.12
1,959.5	0.83	316.65	1,959.4	10.1	-7.9	-12.1	0.24
2,009.5	0.88	307.27	2,009.4	10.6	-8.5	-12.8	0.30
2,059.5	0.96	311.11	2,059.4	11.1	-9.1	-13.5	0.20
2,109.5	0.98	313.06	2,109.4	11.7	-9.7	-14.2	0.08
2,159.5	0.90	314.52	2,159.4	12.2	-10.3	-14.9	0.17
2,209.5	0.85	309.85	2,209.4	12.8	-10.9	-15.6	0.17
2,259.5	0.94	313.71	2,259.4	13.3	-11.5	-16.3	0.22
2,309.5	0.98	309.93	2,309.4	13.8	-12.1	-17.0	0.15
2,359.5	0.99	316.94	2,359.4	14.4	-12.7	-17.8	0.24
2,409.5	0.86	308.72	2,409.4	15.0	-13.3	-18.5	0.37
2,459.5	0.94	310.07	2,459.4	15.5	-13.9	-19.2	0.17
2,509.5	0.96	311.87	2,509.4	16.0	-14.6	-19.9	0.07
2,559.5	0.80	313.64	2,559.4	16.5	-15.1	-20.5	0.32
2,609.5	0.88	303.67	2,609.4	17.0	-15.7	-21.2	0.33
2,659.5	0.88	307.01	2,659.3	17.4	-16.3	-21.8	0.10
2,709.5	0.95	308.99	2,709.3	17.9	-16.9	-22.5	0.15



EOW Completion Report



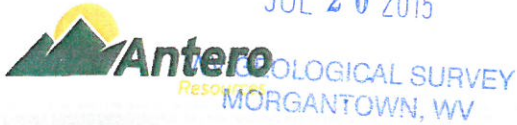
**Company:** Antero Resources  
**Project:** Doddridge County WV  
**Site:** Harriet/Lick Run/Proudfoot/Sibley Pad  
**Well:** Proudfoot Unit 2H  
**Wellbore:** Original Wellpath  
**Design:** As Drilled

**Local Co-ordinate Reference:** Well Proudfoot Unit 2H  
**TVD Reference:** P317 Proudfoot 2H 1275 GL + 22.5 KB @ 1297.5  
**MD Reference:** P317 Proudfoot 2H 1275 GL + 22.5 KB @ 1297.5  
**North Reference:** Grid  
**Survey Calculation Method:** Minimum Curvature  
**Database:** Oklahoma District

Survey

MD (usft)	Inc (°)	Azi (azimuth) (°)	TVD (usft)	N/S (usft)	E/W (usft)	V. Sec (usft)	DLeg (°/100usft)
2,759.5	1.05	303.93	2,759.3	18.4	-17.6	-23.2	0.27
2,809.5	1.07	303.87	2,809.3	19.0	-18.4	-23.9	0.04
2,859.5	1.13	307.34	2,859.3	19.5	-19.2	-24.7	0.18
2,909.5	1.25	304.78	2,909.3	20.1	-20.0	-25.5	0.26
2,959.5	1.31	305.76	2,959.3	20.8	-20.9	-26.4	0.13
3,009.5	1.32	297.31	3,009.3	21.4	-21.9	-27.3	0.39
3,059.5	1.43	305.02	3,059.3	22.0	-22.9	-28.2	0.43
3,109.5	1.42	303.33	3,109.3	22.7	-24.0	-29.2	0.09
3,159.5	1.33	307.38	3,159.2	23.4	-25.0	-30.2	0.26
3,209.5	1.36	304.62	3,209.2	24.1	-25.9	-31.2	0.14
3,259.5	1.38	301.27	3,259.2	24.7	-26.9	-32.1	0.17
3,309.5	1.42	300.98	3,309.2	25.4	-27.9	-33.1	0.08
3,359.5	1.49	303.33	3,359.2	26.0	-29.0	-34.0	0.18
3,409.5	1.42	306.84	3,409.2	26.8	-30.1	-35.1	0.23
3,459.5	1.23	304.65	3,459.1	27.4	-31.0	-36.0	0.39
3,509.5	1.38	305.75	3,509.1	28.1	-31.9	-36.9	0.30
3,559.5	1.27	309.35	3,559.1	28.8	-32.8	-37.9	0.28
3,609.5	1.29	304.69	3,609.1	29.5	-33.7	-38.8	0.21
3,659.5	1.34	303.75	3,659.1	30.1	-34.7	-39.7	0.11
3,709.5	1.39	309.22	3,709.1	30.8	-35.6	-40.7	0.28
3,759.5	1.37	310.39	3,759.1	31.6	-36.6	-41.8	0.07
3,809.5	1.24	309.06	3,809.1	32.3	-37.4	-42.7	0.27
3,859.5	1.39	306.29	3,859.0	33.0	-38.4	-43.7	0.33
3,909.5	1.42	301.82	3,909.0	33.7	-39.4	-44.7	0.23
3,959.5	1.41	304.42	3,959.0	34.4	-40.4	-45.6	0.13
4,009.5	1.41	305.57	4,009.0	35.1	-41.4	-46.6	0.06
4,059.5	1.27	307.35	4,059.0	35.8	-42.4	-47.6	0.29
4,109.5	1.33	303.69	4,109.0	36.4	-43.3	-48.5	0.20
4,159.5	1.40	311.66	4,159.0	37.2	-44.2	-49.5	0.40
4,209.5	1.37	318.19	4,208.9	38.0	-45.1	-50.6	0.32
4,259.5	1.25	325.29	4,258.9	38.9	-45.8	-51.7	0.40
4,309.5	1.17	322.35	4,308.9	39.8	-46.4	-52.7	0.20
4,359.5	1.18	324.27	4,358.9	40.6	-47.0	-53.6	0.08
4,409.5	1.21	332.50	4,408.9	41.5	-47.6	-54.7	0.35
4,459.5	1.15	341.62	4,458.9	42.4	-48.0	-55.7	0.39
4,509.5	1.04	350.11	4,508.9	43.3	-48.2	-56.6	0.39
4,559.5	0.90	356.15	4,558.9	44.2	-48.3	-57.5	0.35
4,609.5	0.98	352.99	4,608.9	45.0	-48.4	-58.3	0.19
4,659.5	0.97	351.14	4,658.9	45.8	-48.5	-59.1	0.07
4,709.5	1.02	359.01	4,708.8	46.7	-48.6	-59.9	0.29
4,759.5	1.11	6.33	4,758.8	47.6	-48.5	-60.8	0.33
4,809.5	1.05	6.74	4,808.8	48.6	-48.4	-61.6	0.12
4,859.5	1.06	15.59	4,858.8	49.5	-48.2	-62.4	0.33
4,909.5	1.08	22.86	4,908.8	50.3	-47.9	-63.2	0.27
4,959.5	0.96	22.70	4,958.8	51.2	-47.6	-63.8	0.24

JUL 20 2015



## EOW Completion Report



**Company:** Antero Resources  
**Project:** Doddridge County WV  
**Site:** Harriet/Lick Run/Proudfoot/Sibley Pad  
**Well:** Proudfoot Unit 2H  
**Wellbore:** Original Wellpath  
**Design:** As Drilled

**Local Co-ordinate Reference:** Well Proudfoot Unit 2H  
**TVD Reference:** P317 Proudfoot 2H 1275 GL + 22.5 KB @ 1297.5  
**MD Reference:** P317 Proudfoot 2H 1275 GL + 22.5 KB @ 1297.5  
**North Reference:** Grid  
**Survey Calculation Method:** Minimum Curvature  
**Database:** Oklahoma District

### Survey

MD (usft)	Inc (°)	Azi (azimuth) (°)	TVD (usft)	N/S (usft)	E/W (usft)	V. Sec (usft)	DLeg (°/100usft)
5,009.5	0.91	27.28	5,008.8	51.9	-47.2	-64.4	0.18
5,059.5	0.92	34.21	5,058.8	52.6	-46.8	-64.9	0.22
5,109.5	0.87	35.74	5,108.8	53.2	-46.4	-65.4	0.11
5,159.5	0.77	33.49	5,158.8	53.8	-46.0	-65.8	0.21
5,209.5	0.78	28.33	5,208.8	54.4	-45.6	-66.3	0.14
5,259.5	0.89	24.33	5,258.8	55.0	-45.3	-66.8	0.25
5,309.5	0.95	23.00	5,308.8	55.8	-45.0	-67.4	0.13
5,359.5	0.91	37.05	5,358.8	56.5	-44.6	-67.9	0.46
5,409.5	0.85	23.05	5,408.8	57.1	-44.2	-68.4	0.45
5,459.5	0.94	26.52	5,458.7	57.8	-43.9	-69.0	0.21
5,509.5	0.78	21.83	5,508.7	58.5	-43.6	-69.5	0.35
5,559.5	0.89	23.38	5,558.7	59.2	-43.3	-70.0	0.22
5,609.5	0.64	26.30	5,608.7	59.8	-43.0	-70.5	0.51
5,659.5	0.88	28.35	5,658.7	60.4	-42.7	-71.0	0.48
5,709.5	0.76	44.83	5,708.7	61.0	-42.3	-71.4	0.53
5,759.5	0.75	42.88	5,758.7	61.4	-41.8	-71.7	0.06
5,809.5	0.71	67.63	5,808.7	61.8	-41.3	-71.9	0.63
5,859.5	0.77	58.80	5,858.7	62.1	-40.7	-72.0	0.26
5,909.5	0.67	82.16	5,908.7	62.3	-40.2	-72.0	0.62
5,959.5	0.53	68.42	5,958.7	62.4	-39.7	-71.9	0.40
6,009.5	0.58	87.83	6,008.7	62.5	-39.2	-71.9	0.39
6,059.5	0.47	63.88	6,058.7	62.6	-38.8	-71.8	0.49
6,109.5	0.67	66.34	6,108.7	62.8	-38.3	-71.9	0.40
6,135.0	0.45	41.76	6,134.2	63.0	-38.1	-71.9	1.26
6,169.0	0.14	15.95	6,168.2	63.1	-38.0	-72.0	0.97
6,264.0	0.26	100.08	6,263.2	63.2	-37.8	-72.0	0.30
6,326.0	0.53	241.41	6,325.2	63.0	-37.9	-71.9	1.21
6,358.0	3.69	218.91	6,357.2	62.1	-38.6	-71.3	10.02
6,389.0	7.39	219.64	6,388.0	59.8	-40.5	-69.8	11.94
6,420.0	11.23	221.74	6,418.6	56.0	-43.8	-67.2	12.43
6,452.0	14.60	221.81	6,449.8	50.7	-48.6	-63.7	10.53
6,483.0	18.19	219.53	6,479.5	44.1	-54.3	-59.3	11.76
6,514.0	21.82	216.92	6,508.6	35.7	-60.8	-53.5	12.06
6,531.0	23.74	216.49	6,524.3	30.4	-64.8	-49.8	11.33
<b>SCMR</b>							
6,545.0	25.32	216.18	6,537.1	25.8	-68.2	-46.5	11.33
6,577.0	29.03	215.11	6,565.5	13.9	-76.7	-38.0	11.69
6,608.0	32.74	213.28	6,592.1	0.7	-85.6	-28.5	12.34
6,640.0	36.23	210.47	6,618.5	-14.7	-95.2	-17.0	11.98
6,671.0	39.57	207.40	6,643.0	-31.3	-104.4	-4.3	12.37
6,703.0	44.23	207.66	6,666.8	-50.3	-114.3	10.5	14.57
6,711.0	45.14	207.97	6,672.5	-55.3	-116.9	14.3	11.66
<b>MDLX</b>							
6,734.0	47.75	208.80	6,688.3	-69.9	-124.8	25.6	11.66

RECEIVED

JUL 20 2015



EOW Completion Report



**Company:** Antero Resources  
**Project:** Doddridge County WV  
**Site:** Harriet/Lick Run/Proudfoot/Sibley Pad  
**Well:** Proudfoot Unit 2H  
**Wellbore:** Original Wellpath  
**Design:** As Drilled

**Local Co-ordinate Reference:** Well Proudfoot Unit 2H  
**TVD Reference:** P317 Proudfoot 2H 1275 GL + 22.5 KB @ 1297.5  
**MD Reference:** P317 Proudfoot 2H 1275 GL + 22.5 KB @ 1297.5  
**North Reference:** Grid  
**Survey Calculation Method:** Minimum Curvature  
**Database:** Oklahoma District

Survey

MD (usft)	Inc (°)	Azi (azimuth) (°)	TVD (usft)	N/S (usft)	E/W (usft)	V. Sec (usft)	DLeg (°/100usft)
6,765.0	49.33	209.07	6,708.8	-90.2	-136.0	41.2	5.14
6,797.0	49.77	208.45	6,729.6	-111.6	-147.8	57.6	2.02
6,828.0	52.06	206.34	6,749.1	-133.0	-158.8	74.2	9.08
6,859.0	55.13	203.35	6,767.5	-155.6	-169.3	92.2	12.58
6,891.0	57.77	200.19	6,785.2	-180.4	-179.2	112.4	11.65
6,922.0	59.97	197.55	6,801.2	-205.5	-187.7	133.4	10.17
6,924.0	60.09	197.36	6,802.2	-207.1	-188.3	134.8	10.30
<b>BRKT</b>							
6,953.0	61.91	194.65	6,816.3	-231.5	-195.3	155.5	10.30
6,985.0	63.23	191.54	6,831.0	-259.2	-201.7	179.6	9.56
7,008.0	64.11	189.75	6,841.3	-279.4	-205.5	197.5	7.94
<b>TLLY</b>							
7,016.0	64.42	189.14	6,844.7	-286.5	-206.7	203.9	7.94
7,048.0	66.13	186.58	6,858.1	-315.3	-210.6	229.8	9.02
7,079.0	68.27	182.88	6,870.1	-343.8	-213.0	256.0	12.99
7,111.0	70.35	179.09	6,881.4	-373.7	-213.5	284.1	12.84
7,143.0	71.96	176.36	6,891.8	-404.0	-212.3	313.1	9.51
7,174.0	73.70	175.03	6,900.9	-433.5	-210.1	341.8	6.95
7,199.0	76.37	173.39	6,907.4	-457.5	-207.6	365.3	12.42
<b>MRCL</b>							
7,206.0	77.12	172.94	6,909.0	-464.3	-206.8	372.0	12.42
7,238.0	80.11	169.34	6,915.3	-495.3	-202.0	402.8	14.45
7,269.0	82.22	169.34	6,920.1	-525.4	-196.3	433.2	6.81
7,301.0	82.66	169.07	6,924.3	-556.5	-190.4	464.6	1.61
7,333.0	83.36	167.32	6,928.2	-587.6	-183.9	496.1	5.85
7,358.0	84.06	164.24	6,930.9	-611.7	-177.8	520.8	12.56
7,390.0	85.03	161.08	6,934.0	-642.1	-168.3	552.7	10.29
7,421.0	87.14	160.73	6,936.1	-671.3	-158.2	583.6	6.90
7,452.0	89.90	162.41	6,936.9	-700.7	-148.4	614.6	10.42
7,516.0	89.78	161.69	6,937.0	-761.6	-128.6	678.6	1.14
7,611.0	88.72	160.81	6,938.3	-851.6	-98.1	773.6	1.45
7,706.0	89.16	161.16	6,940.0	-941.4	-67.2	868.5	0.59
7,801.0	88.81	159.14	6,941.7	-1,030.7	-34.9	963.5	2.16
7,896.0	87.14	159.06	6,945.1	-1,119.4	-1.0	1,058.4	1.76
7,991.0	86.35	158.70	6,950.5	-1,207.9	33.1	1,153.2	0.91
8,086.0	88.20	159.76	6,955.0	-1,296.6	66.8	1,248.0	2.24
8,180.0	88.72	159.32	6,957.5	-1,384.6	99.6	1,341.9	0.72
8,275.0	88.02	160.11	6,960.2	-1,473.7	132.5	1,436.9	1.11
8,366.0	87.32	159.32	6,963.9	-1,559.0	164.1	1,527.8	1.16
8,458.0	87.76	161.87	6,967.9	-1,645.7	194.6	1,619.7	2.81
8,549.0	88.11	162.48	6,971.2	-1,732.2	222.4	1,710.6	0.77
8,639.0	88.69	163.04	6,973.7	-1,818.2	249.1	1,800.5	0.90
8,729.0	87.20	163.51	6,976.9	-1,904.3	275.0	1,890.4	1.74
8,821.0	86.44	162.31	6,982.0	-1,992.1	302.0	1,982.2	1.54
8,912.0	86.09	161.25	6,987.9	-2,078.4	330.4	2,073.0	1.22

RECEIVED

JUL 20 2015



EOW Completion Report



**Company:** Antero Resources  
**Project:** Doddridge County WV  
**Site:** Harriet/Lick Run/Proudfoot/Sibley Pad  
**Well:** Proudfoot Unit 2H  
**Wellbore:** Original Wellpath  
**Design:** As Drilled

**Local Co-ordinate Reference:** Well Proudfoot Unit 2H  
**TVD Reference:** P317 Proudfoot 2H 1275 GL + 22.5 KB @ 1297.5  
**MD Reference:** P317 Proudfoot 2H 1275 GL + 22.5 KB @ 1297.5  
**North Reference:** Grid  
**Survey Calculation Method:** Minimum Curvature  
**Database:** Oklahoma District

Survey

MD (usft)	Inc (°)	Azi (azimuth) (°)	TVD (usft)	N/S (usft)	E/W (usft)	V. Sec (usft)	DLeg (°/100usft)
9,004.0	86.17	161.87	6,994.1	-2,165.4	359.4	2,164.8	0.68
9,096.0	86.97	160.81	6,999.6	-2,252.4	388.8	2,256.6	1.44
9,187.0	89.08	162.13	7,002.8	-2,338.7	417.7	2,347.6	2.73
9,278.0	88.11	161.87	7,005.0	-2,425.2	445.8	2,438.5	1.10
9,370.0	87.76	162.22	7,008.3	-2,512.6	474.1	2,530.4	0.54
9,465.0	89.16	161.78	7,010.9	-2,603.0	503.5	2,625.4	1.54
9,560.0	87.93	160.90	7,013.3	-2,692.9	533.9	2,720.4	1.59
9,655.0	88.55	160.29	7,016.2	-2,782.5	565.4	2,815.3	0.92
9,750.0	88.99	160.29	7,018.2	-2,871.9	597.5	2,910.3	0.46
9,845.0	88.02	160.11	7,020.7	-2,961.3	629.6	3,005.2	1.04
9,940.0	88.81	159.14	7,023.4	-3,050.3	662.7	3,100.2	1.32
10,036.0	88.11	158.26	7,025.9	-3,139.7	697.5	3,196.0	1.17
10,131.0	87.85	160.37	7,029.3	-3,228.5	731.1	3,290.9	2.24
10,226.0	88.02	160.73	7,032.7	-3,318.0	762.7	3,385.9	0.42
10,321.0	87.85	162.92	7,036.1	-3,408.2	792.3	3,480.8	2.31
10,415.0	88.20	161.16	7,039.4	-3,497.6	821.3	3,574.7	1.91
10,510.0	89.52	161.08	7,041.3	-3,587.5	852.0	3,669.7	1.39
10,605.0	89.16	160.90	7,042.4	-3,677.3	882.9	3,764.7	0.42
10,700.0	88.11	160.11	7,044.6	-3,766.8	914.6	3,859.7	1.38
10,795.0	87.23	160.81	7,048.5	-3,856.2	946.4	3,954.6	1.18
10,890.0	85.91	162.57	7,054.2	-3,946.3	976.2	4,049.4	2.31
10,985.0	87.14	161.43	7,059.9	-4,036.5	1,005.5	4,144.2	1.76
11,080.0	86.61	161.60	7,065.1	-4,126.4	1,035.6	4,239.1	0.59
11,175.0	89.69	163.10	7,068.2	-4,216.9	1,064.3	4,334.0	3.61
11,270.0	89.43	163.36	7,068.9	-4,307.8	1,091.7	4,428.9	0.39
11,365.0	88.69	162.88	7,070.5	-4,398.7	1,119.3	4,523.8	0.93
11,459.0	88.02	163.36	7,073.2	-4,488.6	1,146.6	4,617.7	0.88
11,553.0	87.41	162.04	7,076.9	-4,578.3	1,174.5	4,711.6	1.55
11,648.0	87.32	159.93	7,081.3	-4,668.0	1,205.5	4,806.5	2.22
11,743.0	87.05	159.76	7,085.9	-4,757.1	1,238.2	4,901.4	0.34
11,838.0	86.35	159.41	7,091.4	-4,846.0	1,271.2	4,996.2	0.82
11,933.0	87.05	159.41	7,096.9	-4,934.8	1,304.6	5,091.0	0.74
12,028.0	87.67	159.85	7,101.2	-5,023.7	1,337.6	5,185.9	0.80
12,123.0	89.87	160.99	7,103.3	-5,113.2	1,369.5	5,280.8	2.61
12,217.0	88.99	160.55	7,104.2	-5,202.0	1,400.4	5,374.8	1.05
12,312.0	88.81	160.20	7,106.0	-5,291.4	1,432.3	5,469.8	0.41
12,407.0	87.05	157.30	7,109.5	-5,379.9	1,466.7	5,564.6	3.57
12,502.0	87.85	158.44	7,113.7	-5,467.8	1,502.5	5,659.4	1.47
12,597.0	90.13	157.12	7,115.4	-5,555.7	1,538.4	5,754.2	2.77
12,692.0	90.31	159.76	7,115.0	-5,644.1	1,573.3	5,849.1	2.79
12,786.0	91.18	160.99	7,113.8	-5,732.6	1,604.9	5,943.1	1.60
12,881.0	90.13	162.83	7,112.7	-5,822.9	1,634.3	6,038.1	2.23
12,976.0	89.69	161.25	7,112.9	-5,913.3	1,663.6	6,133.0	1.73
13,071.0	89.87	161.78	7,113.2	-6,003.4	1,693.8	6,228.0	0.59





**Company:** Antero Resources  
**Project:** Doddridge County WV  
**Site:** Harriet/Lick Run/Proudfoot/Sibley Pad  
**Well:** Proudfoot Unit 2H  
**Wellbore:** Original Wellpath  
**Design:** As Drilled

**Local Co-ordinate Reference:** Well Proudfoot Unit 2H  
**TVD Reference:** P317 Proudfoot 2H 1275 GL + 22.5 KB @ 1297.5  
**MD Reference:** P317 Proudfoot 2H 1275 GL + 22.5 KB @ 1297.5  
**North Reference:** Grid  
**Survey Calculation Method:** Minimum Curvature  
**Database:** Oklahoma District

**Survey**

MD (usft)	Inc (°)	Azi (azimuth) (°)	TVD (usft)	N/S (usft)	E/W (usft)	V. Sec (usft)	DLeg (°/100usft)
13,166.0	92.95	162.40	7,110.9	-6,093.7	1,723.0	6,323.0	3.31
13,261.0	92.86	160.64	7,106.1	-6,183.7	1,753.0	6,417.9	1.85
13,356.0	92.15	161.43	7,101.9	-6,273.5	1,783.9	6,512.8	1.12
13,420.0	91.19	160.73	7,100.0	-6,334.0	1,804.6	6,576.7	1.86
13,482.0	91.83	161.12	7,098.4	-6,392.6	1,824.9	6,638.7	1.21

**Design Annotations**

Measured Depth (usft)	Vertical Depth (usft)	Local Coordinates		Comment
		+N-S (usft)	+E-W (usft)	
6,531.0	6,524.3	30.4	-64.8	SCMR
6,711.0	6,672.5	-55.3	-116.9	MDLX
6,924.0	6,802.2	-207.1	-188.3	BRKT
7,008.0	6,841.3	-279.4	-205.5	TLLY
7,199.0	6,907.4	-457.5	-207.6	MRCL

Checked By: \_\_\_\_\_ Approved By: \_\_\_\_\_ Date: \_\_\_\_\_

**RECEIVED**  
 JUL 20 2015  
 WV GEOLOGICAL SURVEY  
 MORGANTOWN, WV