

State of West Virginia
Department of Environmental Protection - Office of Oil and Gas
Well Operator's Report of Well Work

API 47-017-06321 County Doddridge District New Milton
Quad New Milton 7.5' Pad Name Pennington North Pad Field/Pool Name _____
Farm name Pennington, Bernard C. Pennington, et al Well Number Sibley Unit 1H
Operator (as registered with the OOG) Antero Resources Corporation
Address 1615 Wynkoop Street City Denver State CO Zip 80202

As Drilled location NAD 83/UTM Attach an as-drilled plat, profile view, and deviation survey
Top hole Northing 4,340,150m Easting 522,542m
Landing Point of Curve Northing 4,339,704.79m Easting 522,910.20m
Bottom Hole Northing 4,338,380m Easting 523,353m

Elevation (ft) 1,277' GL Type of Well New Existing Type of Report Interim Final
Permit Type Deviated Horizontal Horizontal 6A Vertical Depth Type Deep Shallow
Type of Operation Convert Deepen Drill Plug Back Redrilling Rework Stimulate
Well Type Brine Disposal CBM Gas Oil Secondary Recovery Solution Mining Storage Other _____
Type of Completion Single Multiple Fluids Produced Brine Gas NGL Oil Other _____
Drilled with Cable Rotary

Drilling Media Surface hole Air Mud Fresh Water Intermediate hole Air Mud Fresh Water Brine
Production hole Air Mud Fresh Water Brine

Mud Type(s) and Additive(s)

Air- Foam & 4% KCL

Mud- Polymer

Date permit issued 09/17/2013 Date drilling commenced 03/24/2014 Date drilling ceased 08/27/2014
Date completion activities began 09/08/2014 Date completion activities ceased 09/20/2014
Verbal plugging (Y/N) N/A Date permission granted N/A Granted by N/A 20 2015

Please note: Operator is required to submit a plugging application within 5 days of verbal permission to plug

Freshwater depth(s) ft 57' Open mine(s) (Y/N) depths No
Salt water depth(s) ft 1411' Void(s) encountered (Y/N) depths None
Coal depth(s) ft 187'; 787'; 1,477' Cavern(s) encountered (Y/N) depths None
Is coal being mined in area (Y/N) No

Reviewed by:

sk 8/21/15
10/23/2015

API 47-017 - 06321

Farm name Pennington, Bernard C. Pennington, et al Well number Sibley Unit 1H

CASING STRINGS	Hole Size	Casing Size	Depth	New or Used	Grade wt/ft	Basket Depth(s)	Did cement circulate (Y/N) * Provide details below*
Conductor	24"	20"	40'	New	94#; H-40	N/A	Yes
Surface	17 1/2"	13 3/8"	370'	New	48#; H-40	N/A	Yes
Coal							
Intermediate 1	12 1/4"	9 5/8"	2,528'	New	36#; J-55	N/A	Yes
Intermediate 2							
Intermediate 3							
Production	8 3/4" & 8 1/2"	5 1/2"	13,398'	New	20#; P-110	N/A	Yes
Tubing		2 3/8"	6,971'		4.7#; N-80	N/A	
Packer type and depth set		N/A					

Comment Details _____

CEMENT DATA	Class/Type of Cement	Number of Sacks	Slurry wt (ppg)	Yield (ft ³ /sks)	Volume (ft ³)	Cement Top (MD)	WOC (hrs)
Conductor	Class A	120 sx	15.6	1.18	38	0'	8 Hrs.
Surface	Class A	438 sx	15.6	1.18	257	0'	8 Hrs.
Coal							
Intermediate 1	Class A	987 sx	15.6	1.18	792	0'	8 Hrs.
Intermediate 2							
Intermediate 3							
Production	Class H	1,028 sx (Lead); 1,042 sx (Tail)	14.5 (Lead); 15.2 (Tail)	1.3 (Lead); 1.88 (Tail)	2,604	~500' into Intermediate Casing	8 Hrs.
Tubing							

Drillers TD (ft) 13,396' MD, 7,088' TVD (BHL); 7,095' TVD (Deepest Point Drilled)

Loggers TD (ft) 13,345'

Deepest formation penetrated Marcellus

Plug back to (ft) N/A

Plug back procedure N/A

Kick off depth (ft) 6,196'

**This is a subsequent well. Antero only runs wireline logs on one well on a multi-well pad (Proudfoot Unit 2H, API #47-017-06320). Please reference the wireline logs submitted with Form WR-35 for the Proudfoot Unit 2H. A Cement Bond Log has been included with this submittal.

Check all wireline logs run **
 caliper density deviated/directional induction
 neutron resistivity gamma ray temperature sonic

Well cored Yes No Conventional Sidewall Were cuttings collected Yes No

DESCRIBE THE CENTRALIZER PLACEMENT USED FOR EACH CASING STRING _____

Conductor- 0
 Surface- 1 above guide shoe, 1 above insert float, 1 every 4th joint to surface
 Intermediate- 1 above float joint, 1 above float collar, 1 every 4th joint to surface
 Production- 1 above float joint, 1 below float collar, 1 every 3rd joint to top of cement

Received
Office of Oil & Gas
JUL 20 2015

WAS WELL COMPLETED AS SHOT HOLE Yes No DETAILS _____

WAS WELL COMPLETED OPEN HOLE? Yes No DETAILS _____

WERE TRACERS USED Yes No TYPE OF TRACER(S) USED _____

API 47- 017 - 06321 Farm name Pennington, Bernard C. Pennington, et al Well number Sibley Unit 1H

PERFORATION RECORD

Stage No.	Perforation date	Perforated from MD ft.	Perforated to MD ft.	Number of Perforations	Formation(s)
* PLEASE SEE ATTACHED EXHIBIT 1					

Please insert additional pages as applicable.

STIMULATION INFORMATION PER STAGE

Complete a separate record for each stimulation stage.

Stage No.	Stimulations Date	Ave Pump Rate (BPM)	Ave Treatment Pressure (PSI)	Max Breakdown Pressure (PSI)	ISIP (PSI)	Amount of Proppant (lbs)	Amount of Water (bbls)	Amount of Nitrogen/other (units)
* PLEASE SEE ATTACHED EXHIBIT 2								

Received
Office of Oil & Gas
JUL 20 2015

Please insert additional pages as applicable.

API 47- 017 - 06321

Farm name Pennington, Bernard C. Pennington, et al Well number Sibley Unit 1H

<u>PRODUCING FORMATION(S)</u>	<u>DEPTHS</u>	
<u>Marcellus</u>	<u>6,922' (top)</u> TVD	<u>6,545' (top)</u> MD
_____	_____	_____
_____	_____	_____
_____	_____	_____

Please insert additional pages as applicable.

GAS TEST Build up Drawdown Open Flow OIL TEST Flow Pump
 SHUT-IN PRESSURE Surface 3950 psi Bottom Hole _____ psi DURATION OF TEST _____ hrs
 OPEN FLOW Gas Oil NGL Water GAS MEASURED BY
 3,333 mcfpd _____ bpd _____ bpd 650 bpd Estimated Orifice Pilot

LITHOLOGY/ FORMATION	TOP DEPTH IN FT NAME TVD	BOTTOM DEPTH IN FT TVD	TOP DEPTH IN FT MD	BOTTOM DEPTH IN FT MD	DESCRIBE ROCK TYPE AND RECORD QUANTITY AND TYPE OF FLUID (FRESHWATER, BRINE, OIL, GAS, H ₂ S, ETC)
	<u>0</u>		<u>0</u>		

*** PLEASE SEE ATTACHED EXHIBIT 3**

Please insert additional pages as applicable.

Drilling Contractor Patterson - UTI Drilling company LLC
 Address 207 Carlton Drive City Eighty Four State PA Zip 15330
 Logging Company STRC
 Address 1560 Good Hope Pike City Clarksburg State WV Zip 26301
 Cementing Company Nabors Completion & Production Services, Co.
 Address 1650 Hackers Creek City Jane Lew State WV Zip 26378
 Stimulating Company Halliburton
 Address 121 Champion Way, Suite 200 City Canonsburg State PA Zip 15317

Received
Office of Oil & Gas
JUL 20 2015

Please insert additional pages as applicable.
 Completed by Megan Darling Telephone 303-357-7230
 Signature Megan C. Darling Title Permitting Agent Date 07/17/2015

API 47-017-06321 Farm Name Pennington, Bernard C., et al Well Number Sibley Unit 1H

EXHIBIT 1

Stage No.	Perforation Date	Perforated from MD ft.	Perforated to MD ft.	Number of Perforations	Formations
1	8-Sep-14	13,138	13,305	60	Marcellus
2	11-Oct-14	12,940	13,107	60	Marcellus
3	12-Oct-14	12,741	12,909	60	Marcellus
4	12-Oct-14	12,543	12,710	60	Marcellus
5	12-Oct-14	12,345	12,512	60	Marcellus
6	12-Oct-14	12,147	12,314	60	Marcellus
7	13-Oct-14	11,949	12,116	60	Marcellus
8	13-Oct-14	11,750	11,918	60	Marcellus
9	13-Oct-14	11,552	11,719	60	Marcellus
10	14-Oct-14	11,354	11,521	60	Marcellus
11	14-Oct-14	11,156	11,323	60	Marcellus
12	14-Oct-14	10,958	11,125	60	Marcellus
13	15-Oct-14	10,759	10,927	60	Marcellus
14	15-Oct-14	10,561	10,728	60	Marcellus
15	15-Oct-14	10,363	10,530	60	Marcellus
16	16-Oct-14	10,165	10,332	60	Marcellus
17	16-Oct-14	9,967	10,134	60	Marcellus
18	16-Oct-14	9,768	9,936	60	Marcellus
19	16-Oct-14	9,570	9,737	60	Marcellus
20	16-Oct-14	9,372	9,539	60	Marcellus
21	17-Oct-14	9,174	9,341	60	Marcellus
22	17-Oct-14	8,976	9,143	60	Marcellus
23	17-Oct-14	8,778	8,945	60	Marcellus
24	17-Oct-14	8,579	8,746	60	Marcellus
25	17-Oct-14	8,381	8,548	60	Marcellus
26	18-Oct-14	8,183	8,350	60	Marcellus
27	18-Oct-14	7,985	8,152	60	Marcellus
28	18-Oct-14	7,787	7,954	60	Marcellus
29	19-Oct-14	7,588	7,756	60	Marcellus

Received
Office of Oil & Gas
JUL 20 2015

10/23/2015

API 47-017-06321 Farm Name Pennington, Bernard C., et al Well Number Sibley Unit 1H

EXHIBIT 2

Stage No.	Stimulations Date	Avg Pump Rate	Avg Treatment Pressure (PSI)	Max Breakdown Pressure (PSI)	ISIP (PSI)	Amount of Proppant (lbs)	Amount of Water (bbls)	Amount of Nitrogen/ other (units)
1	11-Oct-14	64.4	6,603	5,356	5,199	6,660	6,660	N/A
2	11-Oct-14	65.3	6,660	5,791	5,357	6,650	6,650	N/A
3	12-Oct-14	65.4	6,610	5,310	5,263	6,617	6,617	N/A
4	12-Oct-14	64.4	6,670	5,525	5,247	6,448	6,448	N/A
5	12-Oct-14	64.3	6,339	5,246	5,127	6,552	6,552	N/A
6	12-Oct-14	65.5	6,584	5,146	5,420	6,509	6,509	N/A
7	13-Oct-14	65.6	6,365	5,235	5,012	6,622	6,622	N/A
8	13-Oct-14	64.8	6,227	5,159	5,174	6,540	6,540	N/A
9	13-Oct-14	65.7	6,335	5,370	5,099	6,436	6,436	N/A
10	14-Oct-14	65.4	6,308	5,327	5,044	6,450	6,450	N/A
11	14-Oct-14	64.5	6,368	5,281	5,093	6,360	6,360	N/A
12	14-Oct-14	65.0	6,306	5,389	5,130	6,299	6,299	N/A
13	15-Oct-14	63.4	6,439	5,554	5,215	6,462	6,462	N/A
14	15-Oct-14	64.6	6,393	5,491	5,354	6,269	6,269	N/A
15	15-Oct-14	64.7	6,373	5,344	5,379	6,302	6,302	N/A
16	16-Oct-14	64.2	6,379	5,424	5,405	6,268	6,268	N/A
17	16-Oct-14	63.8	6,361	5,607	5,357	6,259	6,259	N/A
18	16-Oct-14	64.0	6,343	5,574	5,417	6,230	6,230	N/A
19	16-Oct-14	64.9	6,340	5,870	5,237	6,204	6,204	N/A
20	16-Oct-14	63.3	6,450	5,440	5,310	6,176	6,176	N/A
21	17-Oct-14	65.0	6,368	5,428	5,358	6,168	6,168	N/A
22	17-Oct-14	64.5	6,355	5,461	5,342	6,121	6,121	N/A
23	17-Oct-14	63.1	6,216	5,448	5,447	6,123	6,123	N/A
24	17-Oct-14	64.3	6,338	5,351	5,450	6,625	6,625	N/A
25	17-Oct-14	65.2	6,137	5,336	5,245	6,059	6,059	N/A
26	18-Oct-14	64.8	6,153	5,472	5,392	6,050	6,050	N/A
27	18-Oct-14	64.3	6,268	5,671	5,599	5,905	5,905	N/A
28	18-Oct-14	63.8	6,064	5,519	5,464	5,918	5,918	N/A
29	19-Oct-14	61.2	6,172	5,574	5,302	6,496	6,496	N/A
	AVG=	64.5	6,363	5,438	5,291	183,778	183,778	TOTAL

EXHIBIT 3

LITHOLOGY/ FORMATION	TOP DEPTH (TVD)	BOTTOM DEPTH (TVD)	TOP DEPTH (MD)	BOTTOM DEPTH (MD)
	From Surface	From Surface	From Surface	From Surface
Fresh Water	57'	N/A	57'	N/A
Silty Shale	0	67	0	67
Sandy siltstone	est. 67	187	est. 67	187
Coal	est. 187	227	est. 187	227
Sandy siltstone	est. 227	547	est. 227	547
Sandstone	est. 547	707	est. 547	707
Limestone	est. 707	747	est. 707	747
Siltstone	est. 747	787	est. 747	787
Ptisburgh Coal	est. 787	847	est. 787	847
Sandy siltstone	est. 847	1,027	est. 847	1,027
Limey Siltstone	est. 1027	1,087	est. 1027	1,087
Sandy siltstone	est. 1087	1,307	est. 1087	1,307
Sandstone	est. 1307	1,367	est. 1307	1,367
Shale	est. 1367	1,477	est. 1367	1,477
Coal	est. 1477	1,482	est. 1477	1,482
Sandy siltstone trace coal	est. 1482	1,527	est. 1482	1,527
Sandstone	est. 1527	1,587	est. 1527	1,587
Sandstone trace Coal	est. 1587	1,747	est. 1587	1,747
Silty Sandstone	est. 1747	1,787	est. 1747	1,787
Sandstone trace Coal	est. 1787	1,887	est. 1787	1,887
Sandy siltstone	est. 1887	2,069	est. 1887	2,069
Big Lime	2,069	2,184	2,069	2,184
Big Injun	2,184	2,432	2,184	2,432
Gantz Sand	2,432	2,604	2,432	2,604
Fifty Foot Sandstone	2,604	2,871	2,604	2,871
Gordon	2,871	3,149	2,871	3,149
Fifth Sandstone	3,149	3,209	3,149	3,209
Bayard	3,209	3,507	3,209	3,508
Warren	3,507	3,833	3,508	3,837
Speechley	3,833	4,026	3,837	4,030
Baltown	4,026	4,651	4,030	4,656
Bradford	4,651	5,123	4,656	5,128
Benson	5,123	5,363	5,128	5,368
Alexander	5,363	5,576	5,368	5,581
Elk	5,576	6,172	5,581	6,178
Rhinstreet	6,172	6,507	6,178	6,533
Sycamore	6,507	6,661	6,533	6,765
Middlesex	6,661	6,804	6,765	7,087
Burkett	6,804	6,849	7,087	7,240
Tully	6,849	6,922	7,240	7,545
Marcellus	6,922	NA	7,545	NA

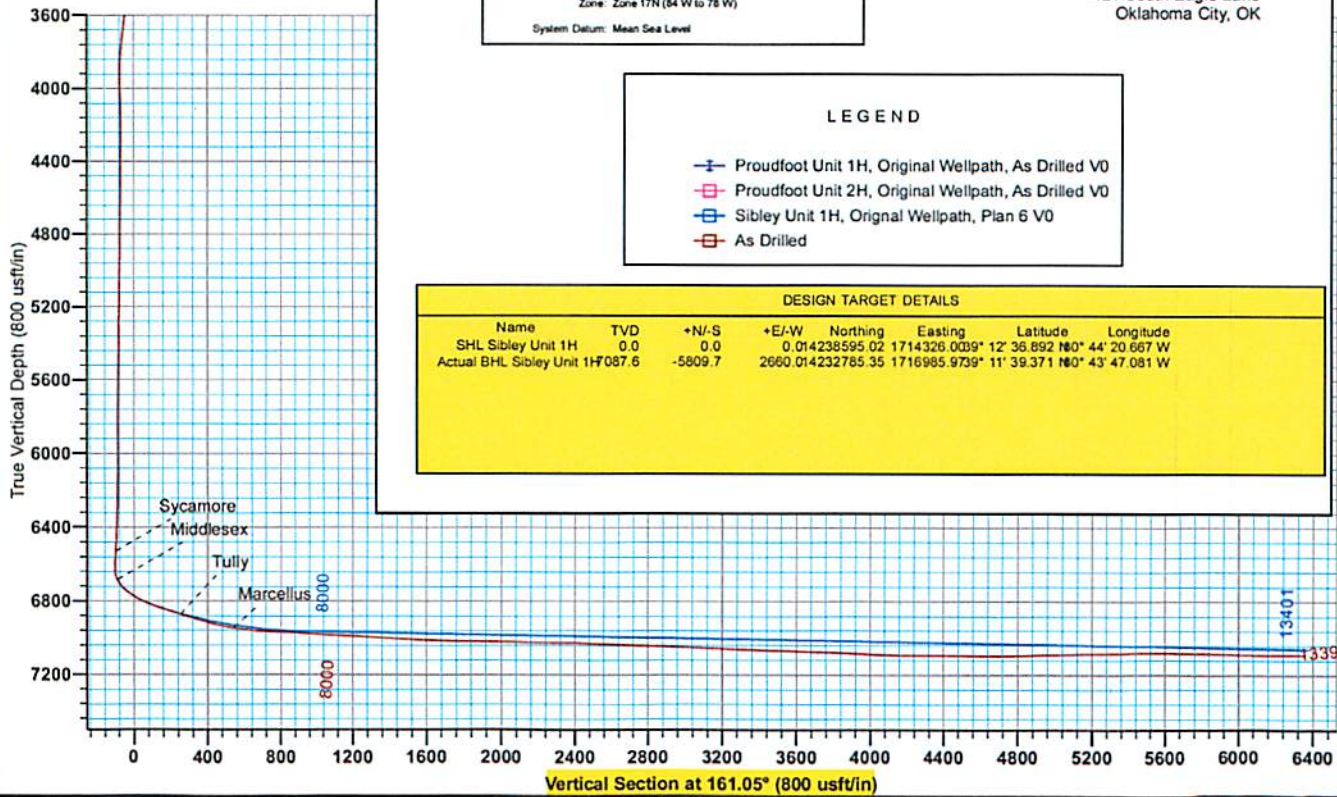
*Please note Antero determines shallow formation tops based on mud logs that are only run on one well in a multi-well pad. The measured depth (MD) data on subsequent wells may be slightly different due to the well's unique departure.

Received
Office of Oil & Gas
JUL 20 2015

10/23/2015



Antero Resources
 Sibley Unit 1H
 Doddridge County WV
 Northing: 14238595.02
 Easting: 1714326.00
 As Drilled



WELL DETAILS: Sibley Unit 1H

+N/-S	+E/-W	Northing	Easting	Latitude	Longitude	Slot
0.0	0.0	14238595.02	1714326.00	39° 12' 36.892 N	80° 44' 20.667 W	
		Ground Level:		1275.0		

REFERENCE INFORMATION

Coordinate (N/E) Reference:	Well Sibley Unit 1H, Grid North
Vertical (TVC) Reference:	Paterson 317 GL 1275' + FMS 22.5 @ 1297.5m
Section (VS) Reference:	Stat - 0.0m, 0.00
Measured Depth Reference:	Paterson 317 GL 1275' + FMS 22.5 @ 1297.5m
Calculation Method:	Minimum Curvature

PROJECT DETAILS: Doddridge County WV

Geodetic System:	Universal Transverse Mercator (US Survey Feet)
Datum:	NAD 1927 (NADCON CONUS)
Ellipsoid:	Clarke 1866
Zone:	Zone 17N (84 W to 78 W)
System Datum:	Mean Sea Level

LEGEND

- Proudfoot Unit 1H, Original Wellpath, As Drilled V0
- Proudfoot Unit 2H, Original Wellpath, As Drilled V0
- Sibley Unit 1H, Original Wellpath, Plan 6 V0
- As Drilled

DESIGN TARGET DETAILS

Name	TVD	+N/-S	+E/-W	Northing	Easting	Latitude	Longitude
SHL Sibley Unit 1H	0.0	0.0	0.0	14238595.02	1714326.00	39° 12' 36.892 N	80° 44' 20.667 W
Actual BHL Sibley Unit 1H	7087.6	-5809.7	2660.0	14232785.35	1716985.97	39° 11' 39.371 N	80° 43' 47.081 W

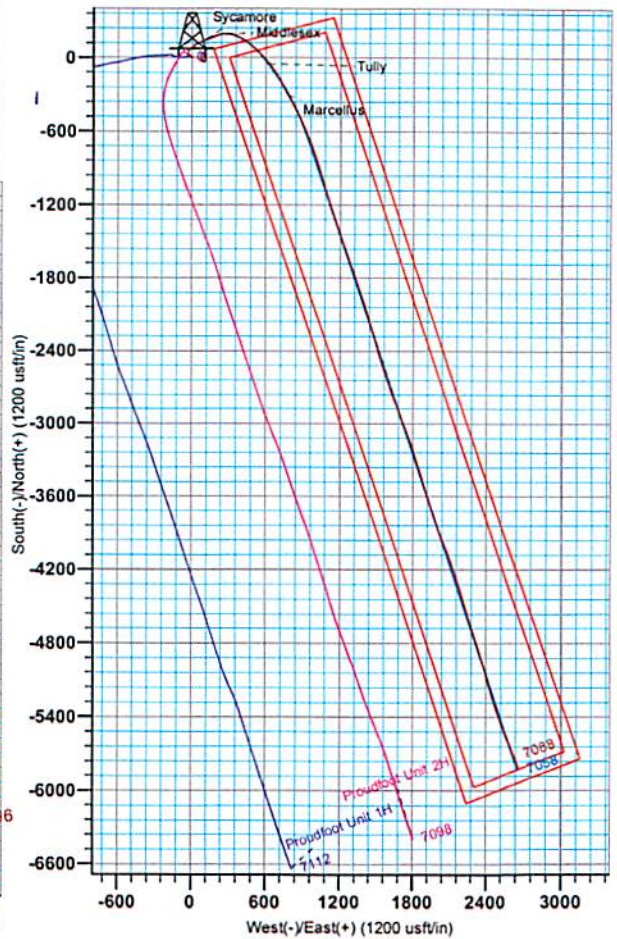
Scientific Drilling
 Genie Lightfoot
 15:09, August 27 2014
 Scientific Drilling
 421 South Eagle Lane
 Oklahoma City, OK



To convert Magnetic North to Grid, Subtract 8.70°
 To convert True North to Grid, Subtract 0.16°

Azimuths to Grid North
 True North: -0.17°
 Magnetic North: -8.70°

Magnetic Field
 Strength: 52222.8nT
 Dip Angle: 66.79°
 Date: 4/25/2014
 Model: DGGM2013



17.06.131

17-06321



Antero Resources

**Doddridge County WV
Harriet/Lick Run/Proudfoot/Sibley Pad
Sibley Unit 1H
Original Wellpath**

Design: As Drilled

EOW Completion Report

27 August, 2014



Scientific Drilling

Received
Office of Oil & Gas
JUL 20 2015

10/23/2015

17-06321



EOW Completion Report



Company:	Antero Resources	Local Co-ordinate Reference:	Well Sibley Unit 1H
Project:	Doddridge County WV	TVD Reference:	Patterson 317 GL 1275' + RKB 22.5 @ 1297.5usf
Site:	Harriet/Lick Run/Proudfoot/Sibley Pad	MD Reference:	Patterson 317 GL 1275' + RKB 22.5 @ 1297.5usf
Well:	Sibley Unit 1H	North Reference:	Grid
Wellbore:	Original Wellpath	Survey Calculation Method:	Minimum Curvature
Design:	As Drilled	Database:	Oklahoma District

Project	Doddridge County WV, McClellan District		
Map System:	Universal Transverse Mercator (US Survey Fee	System Datum:	Mean Sea Level
Geo Datum:	NAD 1927 (NADCON CONUS)		
Map Zone:	Zone 17N (84 W to 78 W)		

Site	Harriet/Lick Run/Proudfoot/Sibley Pad, SHL Proudfoot Unit 2H				
Site Position:		Northing:	14,238,600.69usft	Latitude:	39° 12' 36.949 N
From:	Map	Easting:	1,714,306.91usft	Longitude:	80° 44' 20.909 W
Position Uncertainty:	0.0 usft	Slot Radius:	13-3/16"	Grid Convergence:	0.16 °

Well	Sibley Unit 1H					
Well Position	+N/-S	0.0 usft	Northing:	14,238,595.02 usfi	Latitude:	39° 12' 36.892 N
	+E/-W	0.0 usft	Easting:	1,714,326.00 usfi	Longitude:	80° 44' 20.667 W
Position Uncertainty		2.0 usft	Wellhead Elevation:	1,288.0 usfi	Ground Level:	1,275.0 usft

Wellbore	Original Wellpath				
-----------------	-------------------	--	--	--	--

Magnetics	Model Name	Sample Date	Declination (°)	Dip Angle (°)	Field Strength (nT)
	BGGM2013	4/25/2014	-8.53	66.79	52,223

Design	As Drilled				
---------------	------------	--	--	--	--

Audit Notes:					
Version:	1.0	Phase:	ACTUAL	Tie On Depth:	0.0
Vertical Section:		Depth From (TVD) (usft)	+N/-S (usft)	+E/-W (usft)	Direction (°)
		0.0	0.0	0.0	161.05

Survey Program	Date 8/27/2014				
From (usft)	To (usft)	Survey (Wellbore)	Tool Name	Description	
109.5	3,492.5	Survey #2 Def Gyro (Original Wellpath)	SDI Standard Keeper	Scientific Drilling Intl. Standard Wireline Keeper	
3,409.5	6,098.5	Survey #5 Def Gyro to KOP (Original Wellp	SDI Standard Keeper	Scientific Drilling Intl. Standard Wireline Keeper	
6,105.0	13,396.0	Survey #6 MWD (Original Wellpath)	MWD SDI	MWD - Standard ver 1.0.1	

MD (usft)	Inc (°)	Azi (azimuth) (°)	TVD (usft)	N/S (usft)	E/W (usft)	V. Sec (usft)	DLeg (°/100usft)
0.0	0.00	0.00	0.0	0.0	0.0	0.0	0.00
109.5	0.39	60.89	109.5	0.2	0.3	-0.1	0.36
209.5	0.16	9.34	209.5	0.5	0.6	-0.2	0.32
309.5	0.13	302.13	309.5	0.7	0.6	0.5	0.16
409.5	0.12	290.99	409.5	0.8	0.4	0.6	0.03
509.5	0.14	295.49	509.5	0.9	0.2	0.8	0.02
609.5	0.22	270.74	609.5	0.9	-0.1	0.9	0.11
709.5	0.22	284.49	709.5	1.0	-0.5	1.1	0.05
809.5	0.29	279.14	809.5	1.1	-0.9	1.3	0.07
909.5	0.33	293.56	909.5	1.2	-1.5	1.6	0.09

Received
Office of Oil & Gas
JUL 20 2015

17-06321



EOW Completion Report



Company:	Antero Resources	Local Co-ordinate Reference:	Well Sibley Unit 1H
Project:	Doddridge County WV	TVD Reference:	Patterson 317 GL 1275' + RKB 22.5 @ 1297.5usft
Site:	Harriet/Lick Run/Proudfoot/Sibley Pad	MD Reference:	Patterson 317 GL 1275' + RKB 22.5 @ 1297.5usft
Well:	Sibley Unit 1H	North Reference:	Grid
Wellbore:	Original Wellpath	Survey Calculation Method:	Minimum Curvature
Design:	As Drilled	Database:	Oklahoma District

Survey									
MD (usft)	Inc (°)	Azi (azimuth) (°)	TVD (usft)	N/S (usft)	E/W (usft)	V. Sec (usft)	DLeg (°/100usft)		
1,009.5	0.32	305.04	1,009.5	1.5	-2.0	-2.0	0.07		
1,109.5	0.32	314.36	1,109.5	1.9	-2.4	-2.5	0.05		
1,209.5	0.39	298.66	1,209.5	2.2	-2.9	-3.0	0.12		
1,309.5	0.42	320.47	1,309.5	2.7	-3.4	-3.6	0.16		
1,409.5	0.47	324.45	1,409.5	3.3	-3.9	-4.4	0.06		
1,509.5	0.42	319.48	1,509.5	3.9	-4.4	-5.1	0.06		
1,609.5	0.67	321.37	1,609.5	4.6	-5.0	-6.0	0.25		
1,709.5	0.71	321.49	1,709.5	5.6	-5.7	-7.1	0.04		
1,809.5	0.82	308.10	1,809.5	6.5	-6.7	-8.3	0.21		
1,909.5	0.80	310.26	1,909.4	7.4	-7.8	-9.5	0.04		
2,009.5	0.91	313.75	2,009.4	8.4	-8.9	-10.8	0.12		
2,109.5	0.79	304.59	2,109.4	9.3	-10.0	-12.1	0.18		
2,209.5	0.84	303.68	2,209.4	10.1	-11.2	-13.2	0.05		
2,309.5	0.80	308.77	2,309.4	11.0	-12.3	-14.4	0.08		
2,409.5	0.76	314.76	2,409.4	11.9	-13.4	-15.6	0.09		
2,509.5	0.97	305.87	2,509.4	12.8	-14.5	-16.8	0.25		
2,525.5	0.99	308.43	2,525.4	13.0	-14.7	-17.1	0.30		
2,609.5	0.86	305.46	2,609.4	13.8	-15.8	-18.2	0.16		
2,709.5	1.05	301.92	2,709.4	14.7	-17.2	-19.5	0.20		
2,809.5	1.30	303.11	2,809.3	15.8	-18.9	-21.1	0.25		
2,909.5	1.36	301.81	2,909.3	17.1	-20.9	-22.9	0.07		
3,009.5	1.50	306.75	3,009.3	18.5	-22.9	-24.9	0.19		
3,109.5	1.49	304.74	3,109.2	20.0	-25.1	-27.1	0.05		
3,209.5	1.54	305.80	3,209.2	21.5	-27.2	-29.2	0.06		
3,309.5	1.54	302.10	3,309.2	23.0	-29.4	-31.4	0.10		
3,309.6	1.54	302.10	3,309.2	23.0	-29.4	-31.4	0.00		
3,409.5	2.41	345.46	3,409.1	25.8	-31.1	-34.5	1.67		
3,509.5	5.81	356.03	3,508.8	32.9	-32.0	-41.5	3.47		
3,609.5	6.74	4.99	3,608.3	43.8	-31.8	-51.7	1.35		
3,709.5	8.84	20.95	3,707.3	56.8	-28.6	-63.0	3.00		
3,809.5	9.12	39.91	3,806.1	70.1	-20.7	-73.0	2.96		
3,909.5	7.59	74.20	3,905.1	77.9	-9.3	-76.7	5.12		
4,009.5	3.53	99.39	4,004.6	79.2	0.1	-74.9	4.64		
4,109.5	2.16	93.19	4,104.5	78.6	5.0	-72.7	1.40		
4,209.5	1.32	79.69	4,204.5	78.7	8.0	-71.8	0.93		
4,309.5	0.76	50.58	4,304.5	79.4	9.7	-71.9	0.75		
4,409.5	0.74	35.39	4,404.5	80.3	10.6	-72.5	0.20		
4,509.5	0.82	34.03	4,504.4	81.4	11.3	-73.3	0.08		
4,609.5	0.81	25.82	4,604.4	82.7	12.1	-73.3	0.12		
4,709.5	0.77	21.05	4,704.4	83.9	12.6	-75.3	0.08		
4,809.5	0.82	20.92	4,804.4	85.2	13.1	-76.3	0.05		
4,909.5	0.75	10.12	4,904.4	86.5	13.5	-76.3	0.16		
5,009.5	0.82	7.30	5,004.4	87.9	13.7	-78.7	0.08		
5,109.5	0.96	12.20	5,104.4	89.4	13.9	-80.0	0.16		
5,209.5	0.98	20.53	5,204.4	91.0	14.4	-81.4	0.14		

Received
Office of Oil & Gas
JUL 20 2015

17-06321



EOW Completion Report

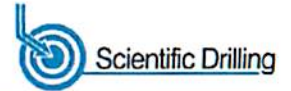


Company:	Antero Resources	Local Co-ordinate Reference:	Well Sibley Unit 1H
Project:	Doddridge County WV	TVD Reference:	Patterson 317 GL 1275' + RKB 22.5 @ 1297.5usf
Site:	Harriet/Lick Run/Proudfoot/Sibley Pad	MD Reference:	Patterson 317 GL 1275' + RKB 22.5 @ 1297.5usf
Well:	Sibley Unit 1H	North Reference:	Grid
Wellbore:	Original Wellpath	Survey Calculation Method:	Minimum Curvature
Design:	As Drilled	Database:	Oklahoma District

Survey

MD (usft)	Inc (°)	Azi (azimuth) (°)	TVD (usft)	N/S (usft)	E/W (usft)	V. Sec (usft)	DLeg (°/100usft)
5,309.5	1.08	19.98	5,304.4	92.7	15.0	-82.8	0.10
5,409.5	1.19	19.03	5,404.3	94.6	15.7	-84.4	0.11
5,509.5	1.15	18.95	5,504.3	96.5	16.4	-86.0	0.04
5,609.5	0.96	20.92	5,604.3	98.2	17.0	-87.4	0.19
5,709.5	1.14	39.50	5,704.3	99.8	17.9	-88.6	0.38
5,809.5	1.35	57.62	5,804.3	101.2	19.6	-89.4	0.44
5,909.5	1.18	71.66	5,904.2	102.1	21.5	-89.6	0.35
6,009.5	1.20	71.38	6,004.2	102.8	23.5	-89.6	0.02
6,098.5	1.24	76.32	6,093.2	103.3	25.3	-89.5	0.13
6,165.0	1.49	72.60	6,159.7	103.8	26.8	-89.4	0.40
6,196.0	3.80	59.40	6,190.6	104.4	28.1	-89.6	7.66
6,228.0	5.72	59.83	6,222.5	105.7	30.4	-90.1	6.00
6,259.0	7.39	58.45	6,253.3	107.6	33.4	-90.9	5.41
6,291.0	8.79	58.88	6,285.0	109.9	37.3	-91.8	4.38
6,322.0	9.32	60.20	6,315.6	112.4	41.5	-92.8	1.84
6,353.0	10.20	60.29	6,346.2	115.0	46.0	-93.8	2.84
6,385.0	12.71	61.35	6,377.5	118.1	51.6	-94.9	7.87
6,416.0	17.40	64.26	6,407.5	121.7	58.8	-96.0	15.32
6,447.0	22.42	65.83	6,436.6	126.2	68.3	-97.1	16.28
6,479.0	27.87	65.74	6,465.5	131.7	80.7	-98.4	17.03
6,510.0	32.98	66.79	6,492.3	138.0	95.1	-99.7	16.57
6,541.0	36.14	67.85	6,517.8	144.8	111.3	-100.8	10.38
6,556.0	37.42	67.85	6,529.8	148.2	119.7	-101.3	8.53
Sycamore							
6,573.0	38.87	67.85	6,543.2	152.2	129.4	-101.9	8.53
6,604.0	43.00	67.50	6,566.6	159.9	148.2	-103.1	13.34
6,635.0	47.04	68.55	6,588.5	168.1	168.5	-104.2	13.25
6,667.0	49.68	68.99	6,609.8	176.7	190.8	-105.2	8.31
6,698.0	50.56	71.63	6,629.6	184.7	213.2	-105.5	7.12
6,729.0	52.06	78.57	6,649.0	190.9	236.5	-103.8	18.13
6,761.0	53.73	86.22	6,668.4	194.3	261.8	-98.7	19.76
6,788.0	54.62	92.51	6,684.2	194.5	283.7	-91.9	19.17
Middlesex							
6,792.0	54.78	93.43	6,686.5	194.4	286.9	-90.6	19.17
6,823.0	56.10	100.46	6,704.1	191.3	312.3	-79.5	19.15
6,848.0	57.11	105.56	6,717.8	186.6	332.6	-68.5	17.50
6,879.0	58.02	112.80	6,734.5	178.0	357.3	-52.3	19.92
6,910.0	60.09	117.89	6,750.4	166.6	381.3	-33.7	15.58
6,941.0	62.87	120.85	6,765.2	153.2	405.0	-13.4	12.28
6,973.0	66.16	123.51	6,779.0	137.8	429.4	8.1	12.73
7,004.0	68.10	125.54	6,791.1	121.6	453.0	32.0	8.69
7,035.0	69.12	127.62	6,802.4	104.4	476.1	53.8	7.06
7,067.0	70.70	130.43	6,813.4	85.5	499.5	81.3	9.61
7,098.0	72.19	134.12	6,823.2	65.8	521.2	107.1	12.26

Received
Office of Oil & Gas
JUL 20 2015



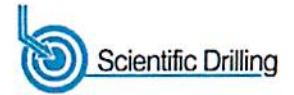
Company:	Antero Resources	Local Co-ordinate Reference:	Well Sibley Unit 1H
Project:	Doddridge County WV	TVD Reference:	Patterson 317 GL 1275' + RKB 22.5 @ 1297.5usf
Site:	Harriet/Lick Run/Proudfoot/Sibley Pad	MD Reference:	Patterson 317 GL 1275' + RKB 22.5 @ 1297.5usf
Well:	Sibley Unit 1H	North Reference:	Grid
Wellbore:	Original Wellpath	Survey Calculation Method:	Minimum Curvature
Design:	As Drilled	Database:	Oklahoma District

Survey									
MD (usft)	Inc (°)	Azi (azimuth) (°)	TVD (usft)	N/S (usft)	EW (usft)	V. Sec (usft)	DLeg (°/100usft)		
7,130.0	73.07	136.14	6,832.8	44.1	542.8	134.5	6.62		
7,161.0	73.16	136.23	6,841.8	22.7	563.3	161.5	0.40		
7,193.0	73.16	137.37	6,851.1	0.4	584.3	189.4	3.41		
7,225.0	72.81	139.39	6,860.4	-22.5	604.6	217.6	6.13		
7,257.0	73.07	140.62	6,869.8	-45.9	624.3	246.2	3.76		
7,263.0	73.27	141.18	6,871.5	-50.4	627.9	251.6	9.60		
Tully									
7,288.0	74.13	143.52	6,878.6	-69.4	642.5	274.3	9.60		
7,320.0	74.04	145.63	6,887.3	-94.5	660.4	303.8	6.35		
7,351.0	74.04	146.95	6,895.9	-119.3	676.9	332.6	4.09		
7,415.0	74.22	152.93	6,913.4	-172.5	707.7	393.0	8.99		
7,478.0	75.89	152.66	6,929.6	-226.6	735.5	453.2	2.68		
7,510.0	79.67	152.31	6,936.4	-254.4	750.0	484.1	11.86		
7,541.0	82.31	151.95	6,941.2	-281.4	764.3	514.4	8.59		
7,568.0	82.04	151.65	6,944.9	-305.0	776.9	540.8	1.46		
Marcellus									
7,604.0	81.69	151.26	6,950.0	-336.3	794.0	575.9	1.46		
7,668.0	82.66	151.79	6,958.7	-392.1	824.2	638.5	1.72		
7,699.0	85.56	152.49	6,961.9	-419.3	838.6	668.9	9.62		
7,731.0	87.23	154.25	6,963.9	-447.9	852.9	700.6	7.57		
7,794.0	87.32	154.69	6,966.9	-504.6	880.0	763.1	0.71		
7,889.0	87.67	156.88	6,971.1	-591.2	919.0	857.6	2.33		
7,984.0	86.17	158.55	6,976.2	-679.0	954.9	952.3	2.36		
8,078.0	87.14	161.01	6,981.7	-767.0	987.4	1,046.1	2.81		
8,169.0	87.05	162.68	6,986.3	-853.4	1,015.7	1,137.0	1.84		
8,260.0	87.58	163.74	6,990.5	-940.4	1,041.9	1,227.8	1.30		
8,351.0	86.26	163.30	6,995.4	-1,027.5	1,067.7	1,318.6	1.53		
8,442.0	86.97	163.30	7,000.8	-1,114.5	1,093.8	1,409.3	0.78		
8,534.0	87.23	162.07	7,005.5	-1,202.3	1,121.2	1,501.2	1.36		
8,625.0	87.49	162.24	7,009.6	-1,288.8	1,149.0	1,592.1	0.34		
8,716.0	88.46	161.19	7,012.9	-1,375.1	1,177.6	1,683.0	1.57		
8,808.0	89.16	160.49	7,014.8	-1,462.0	1,207.8	1,775.0	1.08		
8,899.0	89.16	160.57	7,016.1	-1,547.8	1,238.1	1,866.0	0.09		
8,990.0	88.55	160.75	7,017.9	-1,633.7	1,268.2	1,957.0	0.70		
9,081.0	88.90	160.13	7,019.9	-1,719.4	1,298.7	2,047.9	0.78		
9,173.0	88.72	162.16	7,021.9	-1,806.4	1,328.4	2,139.9	2.21		
9,268.0	89.29	161.47	7,023.5	-1,896.7	1,358.0	2,234.9	0.94		
9,362.0	89.60	161.72	7,024.4	-1,985.8	1,387.7	2,328.9	0.42		
9,457.0	88.64	163.39	7,025.9	-2,076.5	1,416.2	2,423.8	2.03		
9,552.0	87.49	164.18	7,029.1	-2,167.6	1,442.7	2,518.7	1.47		
9,647.0	86.97	164.44	7,033.7	-2,259.0	1,468.4	2,613.4	0.61		
9,742.0	88.29	163.65	7,037.6	-2,350.2	1,494.5	2,708.2	1.62		
9,837.0	88.02	163.21	7,040.7	-2,441.2	1,521.5	2,803.0	0.54		
9,932.0	88.11	162.24	7,043.9	-2,531.9	1,549.7	2,897.9	1.02		
10,027.0	87.85	160.84	7,047.2	-2,622.0	1,579.8	2,992.9	1.50		

17-06321



EOW Completion Report



Company:	Antero Resources	Local Co-ordinate Reference:	Well Sibley Unit 1H
Project:	Doddridge County WV	TVD Reference:	Patterson 317 GL 1275' + RKB 22.5 @ 1297.5usf
Site:	Harriet/Lick Run/Proudfoot/Sibley Pad	MD Reference:	Patterson 317 GL 1275' + RKB 22.5 @ 1297.5usf
Well:	Sibley Unit 1H	North Reference:	Grid
Wellbore:	Original Wellpath	Survey Calculation Method:	Minimum Curvature
Design:	As Drilled	Database:	Oklahoma District

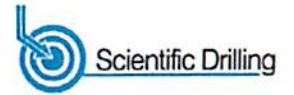
Survey								
MD (usft)	Inc (°)	Azi (azimuth) (°)	TVD (usft)	N/S (usft)	E/W (usft)	V. Sec (usft)	DLeg (°/100usft)	
10,122.0	87.93	160.66	7,050.7	-2,711.6	1,611.1	3,087.8	0.21	
10,218.0	87.58	158.82	7,054.5	-2,801.6	1,644.3	3,183.7	1.95	
10,313.0	86.97	159.52	7,059.0	-2,890.3	1,678.0	3,278.6	0.98	
10,407.0	88.37	158.20	7,062.8	-2,977.9	1,711.9	3,372.4	2.05	
10,502.0	87.85	160.13	7,066.0	-3,066.6	1,745.7	3,467.3	2.10	
10,597.0	88.02	159.43	7,069.4	-3,155.7	1,778.5	3,562.2	0.76	
10,692.0	88.29	163.39	7,072.4	-3,245.7	1,808.8	3,657.1	4.18	
10,787.0	88.81	162.60	7,074.8	-3,336.5	1,836.5	3,752.1	1.00	
10,882.0	87.23	163.04	7,078.1	-3,427.2	1,864.6	3,847.0	1.73	
10,977.0	87.14	163.21	7,082.8	-3,518.0	1,892.1	3,941.8	0.20	
11,072.0	87.32	163.39	7,087.4	-3,608.9	1,919.4	4,036.6	0.27	
11,167.0	88.29	162.60	7,091.0	-3,699.7	1,947.2	4,131.5	1.32	
11,262.0	90.57	162.16	7,092.0	-3,790.2	1,975.9	4,226.4	2.44	
11,356.0	89.78	158.99	7,091.7	-3,878.8	2,007.2	4,320.4	3.48	
11,451.0	89.25	156.79	7,092.5	-3,966.8	2,042.9	4,415.3	2.38	
11,546.0	89.69	158.64	7,093.4	-4,054.7	2,078.9	4,510.1	2.00	
11,640.0	88.99	159.61	7,094.4	-4,142.5	2,112.4	4,604.0	1.27	
11,735.0	90.92	162.86	7,094.5	-4,232.5	2,143.0	4,699.0	3.98	
11,830.0	90.75	161.19	7,093.1	-4,322.8	2,172.3	4,794.0	1.77	
11,925.0	91.63	163.47	7,091.2	-4,413.3	2,201.1	4,888.9	2.57	
12,020.0	92.42	162.68	7,087.8	-4,504.1	2,228.8	4,983.8	1.18	
12,115.0	90.84	163.83	7,085.1	-4,595.1	2,256.1	5,078.7	2.06	
12,209.0	91.28	163.30	7,083.4	-4,685.2	2,282.7	5,172.6	0.73	
12,304.0	90.75	161.01	7,081.7	-4,775.6	2,311.8	5,267.5	2.47	
12,399.0	90.84	164.18	7,080.4	-4,866.3	2,340.2	5,362.5	3.34	
12,494.0	90.57	163.30	7,079.2	-4,957.5	2,366.8	5,457.4	0.97	
12,589.0	89.16	164.18	7,079.4	-5,048.6	2,393.4	5,552.3	1.75	
12,684.0	89.69	164.00	7,080.4	-5,140.0	2,419.5	5,647.1	0.59	
12,778.0	90.22	163.74	7,080.4	-5,230.3	2,445.6	5,741.0	0.63	
12,873.0	88.55	160.75	7,081.5	-5,320.8	2,474.5	5,836.0	3.60	
12,968.0	88.64	160.13	7,083.8	-5,410.3	2,506.3	5,930.9	0.66	
13,063.0	88.86	159.02	7,085.9	-5,499.3	2,539.5	6,025.9	1.19	
13,158.0	89.08	158.11	7,087.6	-5,587.7	2,574.2	6,120.8	0.99	
13,253.0	90.13	159.08	7,088.2	-5,676.1	2,608.9	6,215.7	1.50	
13,336.0	90.44	158.66	7,087.8	-5,753.5	2,638.8	6,298.6	0.63	
13,396.0	90.00	160.00	7,087.6	-5,809.7	2,660.0	6,358.6	2.35	

Received
Office of Oil & Gas
JUL 20 2015

17-06321



EOW Completion Report



Company:	Antero Resources	Local Co-ordinate Reference:	Well Sibley Unit 1H
Project:	Doddridge County WV	TVD Reference:	Patterson 317 GL 1275' + RKB 22.5 @ 1297.5usf
Site:	Harriet/Lick Run/Proudfoot/Sibley Pad	MD Reference:	Patterson 317 GL 1275' + RKB 22.5 @ 1297.5usf
Well:	Sibley Unit 1H	North Reference:	Grid
Wellbore:	Original Wellpath	Survey Calculation Method:	Minimum Curvature
Design:	As Drilled	Database:	Oklahoma District

Design Annotations				
Measured Depth (usft)	Vertical Depth (usft)	Local Coordinates		Comment
		+N/-S (usft)	+E/-W (usft)	
6,556.0	6,529.8	148.2	119.7	Sycamore
6,788.0	6,684.2	194.5	283.7	Middlesex
7,263.0	6,871.5	-50.4	627.9	Tully
7,568.0	6,944.9	-305.0	776.9	Marcellus

Checked By: _____ Approved By: _____ Date: _____

Received
Office of Oil & Gas
JUL 20 2015

Hydraulic Fracturing Fluid Product Component Information Disclosure

Job Start Date:	10/11/2014
Job End Date:	10/18/2014
State:	West Virginia
County:	Doddridge
API Number:	47-017-06321-00-00
Operator Name:	Antero Resources Corporation
Well Name and Number:	Sibley Unit 1H
Longitude:	-80.73888900
Latitude:	39.21033100
Datum:	NAD83
Federal/Tribal Well:	NO
True Vertical Depth:	7,095
Total Base Water Volume (gal):	8,157,452
Total Base Non Water Volume:	0



17-06321

Hydraulic Fracturing Fluid Composition:

Trade Name	Supplier	Purpose	Ingredients	Chemical Abstract Service Number (CAS #)	Maximum Ingredient Concentration in Additive (% by mass)**	Maximum Ingredient Concentration in HF Fluid (% by mass)**	Comments
Fresh Water	Operator	Base Fluid					
			Fresh Water	7732-18-5	100.00000	90.52348	Density = 8.330
SSA-2	Halliburton	Proppant					
			Crystalline silica, quartz	14808-60-7	100.00000	5.04979	
SAND - PREMIUM WHITE	Halliburton	Proppant					
			Crystalline silica, quartz	14808-60-7	100.00000	4.06856	
WG-36 GELLING AGENT	Halliburton	Gelling Agent					
			Guar gum	9000-30-0	100.00000	0.06776	
HYDROCHLORIC ACID 10-30%	Halliburton	Solvent					
			Hydrochloric acid	7647-01-0	30.00000	0.06437	
FR-66	Halliburton	Friction Reducer					
			Hydrotreated light petroleum distillate	64742-47-8	30.00000	0.01543	
SP BREAKER	Halliburton	Breaker					
			Sodium persulfate	7775-27-1	100.00000	0.00171	
Scalecheck® LP-65 Scale Inhibitor	Halliburton	Scale Inhibitor					
			Ammonium chloride	12125-02-9	10.00000	0.00147	
BE-9	Halliburton	Biocide					

Received
 Office of Oil & Gas
 JUL 9 2015

		Tributyl tetradecyl phosphonium chloride	81741-28-8	10.00000	0.00080	
Ingredients shown above are subject to 29 CFR 1910.1200(i) and appear on Material Safety Data Sheets (MSDS). Ingredients shown below are Non-MSDS.						
		Other Ingredient(s)				
		Water	7732-18-5		0.26225	
		Other Ingredient(s)				
		Polyacrylamide copolymer	Confidential		0.01543	
		Other Ingredient(s)				
		Organic phosphonate	Confidential		0.00879	
		Other ingredient(s)				
		Bentonite, benzyl(hydrogenated tallow alkyl) dimethylammonium stearate complex	121888-68-4		0.00339	
		Other Ingredient(s)				
		Fatty acid tall oil amide	Confidential		0.00257	Denise Tuck, Halliburton 3000 N. Sam Houston Pkwy E., Houston, TX 77032 281-871-6226
		Other Ingredient(s)				
		Sodium chloride	7647-14-5		0.00257	
		Other Ingredient(s)				
		Alcohols, C12-16, ethoxylated	68551-12-2		0.00257	
		Other Ingredient(s)				
		Ammonium chloride	12125-02-9		0.00257	
		Other Ingredient(s)				
		Surfactant mixture	Confidential		0.00068	
		Other Ingredient(s)				
		Surfactant mixture	Confidential		0.00068	
		Other Ingredient(s)				
		Silica gel	112926-00-8		0.00068	
		Other Ingredient(s)				
		Sorbitan, mono-9-octadecenoate, (Z)	1338-43-8		0.00051	
		Other Ingredient(s)				
		Sorbitan monooleate polyoxyethylene derivative	9005-65-6		0.00051	
		Other Ingredient(s)				
		Formaldehyde	50-00-0		0.00015	
		Other Ingredient(s)				
		Crystalline Silica, Quartz	14808-60-7		0.00007	
		Other Ingredient(s)				
		Sodium sulfate	7757-82-6		0.00000	

* Total Water Volume Sources may include fresh water, produced water, and/or recycled water

** Information is based on the maximum potential for concentration and thus the total may be over 100%

Note: For Field Development Products (products that begin with FDP), MSDS level only information has been provided.

Ingredient information for chemicals subject to 29 CFR 1910.1200(i) and Appendix D are obtained from suppliers Material Safety Data Sheets (MSDS)

17-016321

OFFICE OF CIVIL RIGHTS
DENISE TUCK
3000 N. SAM HOUSTON PKWY
E., HOUSTON, TX 77032
281-871-6226

LATITUDE 39°15'00"

8,710'

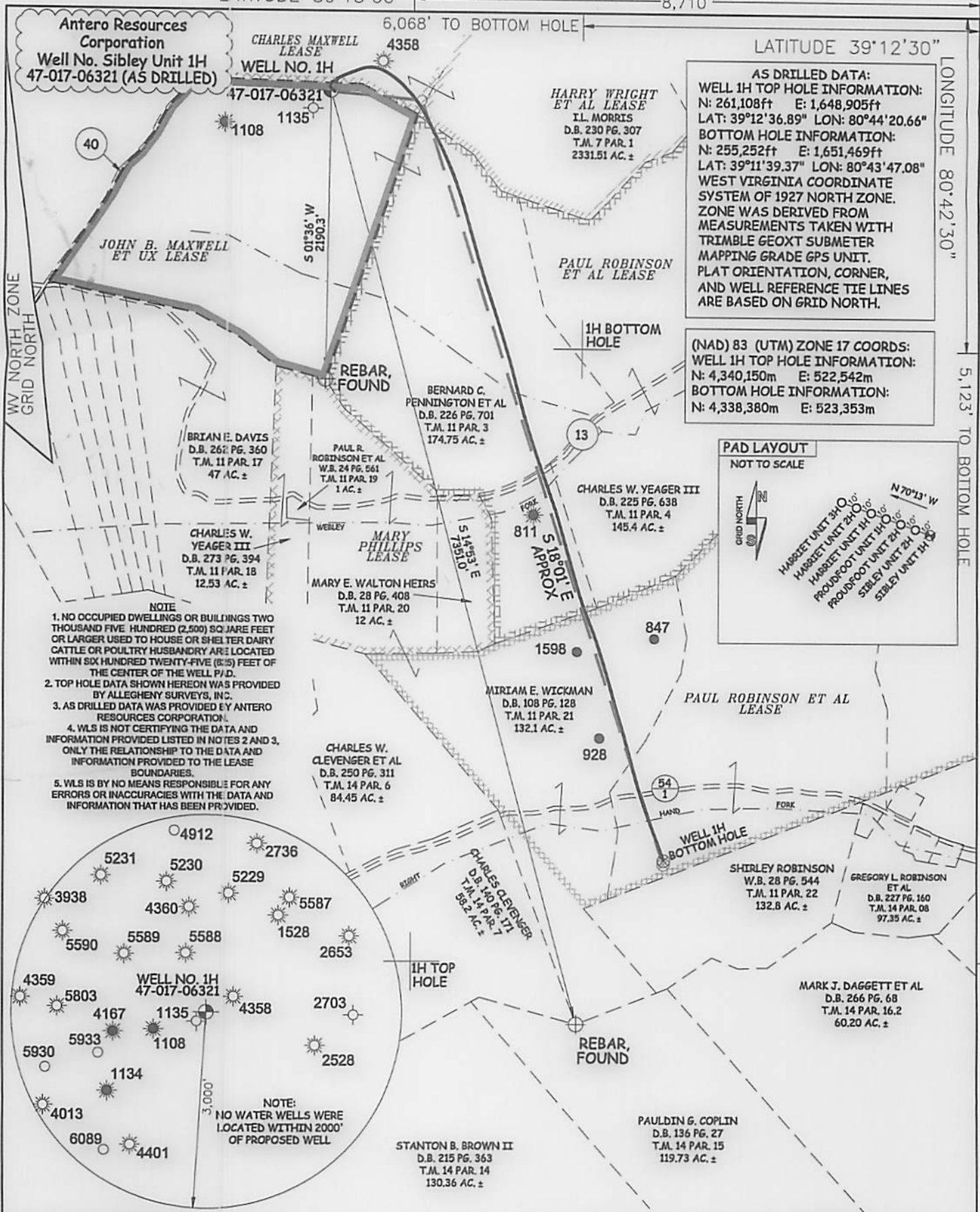
LATITUDE 39°12'30"

LONGITUDE 80°42'30"

5,123' TO BOTTOM HOLE

14,479'

LONGITUDE 80°42'30"



JOB # 13-054WA
DRAWING # SIBLEY1HAD
SCALE 1" = 1000'
MINIMUM DEGREE OF ACCURACY SUBMETER
PROVEN SOURCE OF ELEV. SUBMETER MAPPING GRADE GPS



STATE OF WEST VIRGINIA, DIVISION OF ENVIRONMENTAL PROTECTION, OFFICE OF OIL AND GAS
WILLOW LAND SURVEYING PLLC
220 MASONIC AVE. PENNSBORO WEST VIRGINIA 26415

LEGEND
- - - Surface Owner Boundary Lines +/-
- - - Interior Surface Tracts +/-
X Existing Fence
⊕ Found monument, as noted
○ Proposed Well Path
⊗ As Drilled Well Path

STATE OF WEST VIRGINIA DEPARTMENT OF ENERGY DIVISION OF OIL AND GAS

DATE 06/17/15
OPERATOR'S WELL# SIBLEY UNIT #1H
API WELL # 47 - 017 - 06321

WELL TYPE: OIL GAS LIQUID INJECTION WASTE DISPOSAL
(IF "GAS") PRODUCTION STORAGE DEEP SHALLOW

STATE COUNTY PERMIT
MIDDLE ISLAND CREEK

LOCATION: ELEVATION 1,289' ORIGINAL - 1,277' AS DRILLED WATERSHED HEADWATERS DISTRICT NEW MILTON COUNTY DODDRIDGE

10/23/2015

SURFACE OWNER BERNARD C. PENNINGTON ET AL ACREAGE 174.75 ACRES +/-
OIL & GAS ROYALTY OWNER JOHN B. MAXWELL ET UX; CHARLES MAXWELL; HARRY WRIGHT ET AL; PAUL ROBINSON ET AL; PAUL ROBINSON ET AL LEASE ACREAGE 101.98 ACRES +/-; 86 ACRES +/-; 72 ACRES +/-; 237 AC +/-; 220 AC +/-

PROPOSED WORK: DRILL CONVERT DRILL DEEPER REDRILL FRACTURE OR STIMULATE
PLUG OFF OLD FORMATION PERFORATE NEW FORMATION OTHER PHYSICAL CHANGE IN WELL (SPECIFY) (X) AS DRILLED PLUG & ABANDON
TARGET FORMATION MARCELLUS ESTIMATED DEPTH 7,088' TO 13,295' MD

DIANNA STAMPER
CT CORPORATION SYSTEM

WELL OPERATOR ANTERO RESOURCES CORP. DESIGNATED AGENT
ADDRESS 1615 WYNKOOP STREET ADDRESS 5400 D BIG TYLER ROAD
DENVER, CO 80202 CHARLESTON, WV 25313