

RECEIVED

JUN 26 2015

WR-35
Rev. 8/23/13

WV GEOLOGICAL SURVEY
MORGANTOWN, WV

Page ___ of ___

State of West Virginia
Department of Environmental Protection - Office of Oil and Gas
Well Operator's Report of Well Work

API 47 - 017 - 06334 County Doddridge District New Milton
Quad New Milton 7.5' Pad Name Cline Pad Field/Pool Name ---
Farm name Trustees Chestnut Grove Church Well Number Gearhart Unit 2H
Operator (as registered with the OOG) Antero Resources Corporation
Address 1615 Wynkoop St. City Denver State CO Zip 80202

As Drilled location NAD 83/UTM Attach an as-drilled plat, profile view, and deviation survey
Top hole Northing 4337451m Easting 525940m
Landing Point of Curve Northing 4337320.53m Easting 526200.62m
Bottom Hole Northing 4335481m Easting 526769m

Elevation (ft) 1096' GL Type of Well New Existing Type of Report Interim Final
Permit Type Deviated Horizontal Horizontal 6A Vertical Depth Type Deep Shallow
Type of Operation Convert Deepen Drill Plug Back Redrilling Rework Stimulate
Well Type Brine Disposal CBM Gas Oil Secondary Recovery Solution Mining Storage Other _____
Type of Completion Single Multiple Fluids Produced Brine Gas NGL Oil Other _____
Drilled with Cable Rotary

Drilling Media Surface hole Air Mud Fresh Water Intermediate hole Air Mud Fresh Water Brine
Production hole Air Mud Fresh Water Brine
Mud Type(s) and Additive(s)
Air- Foam & 4% KCL
Mud- Polymer

Date permit issued 11/7/2013 Date drilling commenced 1/21/2014 Date drilling ceased 4/2/2014
Date completion activities began 7/31/2014 Date completion activities ceased 11/8/2014
Verbal plugging (Y/N) N/A Date permission granted N/A Granted by N/A

Please note: Operator is required to submit a plugging application within 5 days of verbal permission to plug

Freshwater depth(s) ft 56' Open mine(s) (Y/N) depths No
Salt water depth(s) ft 637' Void(s) encountered (Y/N) depths No
Coal depth(s) ft None Identified Cavern(s) encountered (Y/N) depths No
Is coal being mined in area (Y/N) No

Reviewed by:

RECEIVED

JUN 26 2015

WR-35
Rev. 8/23/13

Page ___ of ___

WV GEOLOGICAL SURVEY
MORGANTOWN, WV

API 47-017 - 06334 Farm name Trustees Chestnut Grove Church Well number Gearhart Unit 2H

CASING STRINGS	Hole Size	Casing Size	Depth	New or Used	Grade wt/ft	Basket Depth(s)	Did cement circulate (Y/N) * Provide details below*
Conductor	30"	20"	40'	New	51# H-40	N/A	Y
Surface	17- 1/2"	13- 3/8"	414'	New	48# J-55	N/A	Y
Coal							
Intermediate 1	12-1/4"	9-5/8"	2551'	New	36# J-55	N/A	Y
Intermediate 2							
Intermediate 3							
Production	8-3/4" & 8-1/2"	5-1/2"	14206'	New	20# P-110	N/A	Y
Tubing		2-3/8"	7021'		4.7# N-80	N/A	
Packer type and depth set		N/A					

Comment Details _____

CEMENT DATA	Class/Type of Cement	Number of Sacks	Slurry wt (ppg)	Yield (ft ³ /sks)	Volume (ft ³)	Cement Top (MD)	WOC (hrs)
Conductor	Class A	196 sx	15.6	1.18	38	0'	8 Hrs.
Surface	Class A	483 sx	15.6	1.18	288	0'	8 Hrs.
Coal							
Intermediate 1	Class A	995 sx	15.6	1.18	799	0'	8 Hrs.
Intermediate 2							
Intermediate 3							
Production	Class H	1058 sx (Lead) 1132 sx (Tail)	13.5 Lead 15.2 Tail	1.44 Lead 1.8 Tail	2785	-500' into Intermediate Casing	8 Hrs.
Tubing							

Drillers TD (ft) 14206' MD, 7107' TVD (BHL) Loggers TD (ft) 14159'
Deepest formation penetrated Marcellus Plug back to (ft) N/A
Plug back procedure N/A

Kick off depth (ft) 6414'

** This is a subsequent well. Antero only runs wireline logs on one well on a multi-well pad (Nickers Unit 3H API #47-017-06333). Please reference the wireline logs submitted with Form WR-35 for Nickers Unit 3H. A Cement Bond Log has been included with this submittal.

Check all wireline logs run caliper density deviated/directional induction neutron resistivity gamma ray temperature sonic
Well cored Yes No Conventional Sidewall Were cuttings collected Yes No

DESCRIBE THE CENTRALIZER PLACEMENT USED FOR EACH CASING STRING _____

Conductor- 0
Surface- 1 above guide shoe, 1 above insert float, 1 every 4th joint to surface
Intermediate- 1 above float joint, 1 above float collar, 1 every 4th joint to surface
Production- 1 above float joint, 1 below float collar, 1 every 3rd joint to top of cement

WAS WELL COMPLETED AS SHOT HOLE Yes No DETAILS _____

WAS WELL COMPLETED OPEN HOLE? Yes No DETAILS _____

WERE TRACERS USED Yes No TYPE OF TRACER(S) USED _____

RECEIVED

JUN 26 2015

WR-35
Rev. 8/23/13

WV GEOLOGICAL SURVEY
MORGANTOWN, WV

Page ___ of ___

API 47- 017 - 06334 Farm name Trustees Chestnut Grove Church Well number Gearhart Unit 2H

PRODUCING FORMATION(S)	DEPTHS	
	7017' (TOP) TVD	7539' (TOP) MD
Marcellus		

Please insert additional pages as applicable.

GAS TEST Build up Drawdown Open Flow OIL TEST Flow Pump

SHUT-IN PRESSURE Surface 3950 psi Bottom Hole --- psi DURATION OF TEST --- hrs

OPEN FLOW Gas 12337 mcfpd Oil 11 bpd NGL --- bpd Water 868 bpd GAS MEASURED BY Estimated Orifice Pilot

LITHOLOGY/ FORMATION	TOP DEPTH IN FT NAME TVD	BOTTOM DEPTH IN FT TVD	TOP DEPTH IN FT MD	BOTTOM DEPTH IN FT MD	DESCRIBE ROCK TYPE AND RECORD QUANTITY AND TYPE OF FLUID (FRESHWATER, BRINE, OIL, GAS, H ₂ S, ETC)
	0		0		

*PLEASE SEE EXHIBIT 3

Please insert additional pages as applicable.

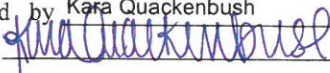
Drilling Contractor Patterson - UTI Drilling Company LLC
Address 207 Carlton Drive City Eighty-Four State PA Zip 15330

Logging Company Rush Wellsite Services
Address 600 Alpha Drive City Canonsburg State PA Zip 15317

Cementing Company Allied Oil & Gas Services, LLC
Address 1036 East Main St. City Bridgeport State WV Zip 26330

Stimulating Company US Well Services
Address 533 Industrial Park Dr. City Jane Lew State WV Zip 26378

Please insert additional pages as applicable.

Completed by Kara Quackenbush Telephone 303-357-7233
Signature  Title Permitting Agent Date 6/22/2015

Submission of Hydraulic Fracturing Chemical Disclosure Information Attach copy of FRACFOCUS Registry

API 47-017-06334 Farm Name Trustees Chestnut Grove Church Well Number Gearhart Unit 2H

EXHIBIT 1

Stage No.	Perforation Date	Perforated from MD ft.	Perforated to MD ft.	Number of Perforations	Formations
1	31-Jul-14	13,951	14,119	60	Marcellus
2	30-Sep-14	13,752	13,920	60	Marcellus
3	1-Oct-14	13,553	13,721	60	Marcellus
4	1-Oct-14	13,355	13,522	60	Marcellus
5	1-Oct-14	13,156	13,323	60	Marcellus
6	1-Oct-14	12,957	13,124	60	Marcellus
7	2-Oct-14	12,758	12,925	60	Marcellus
8	2-Oct-14	12,559	12,726	60	Marcellus
9	2-Oct-14	12,360	12,528	60	Marcellus
10	2-Oct-14	12,161	12,329	60	Marcellus
11	3-Oct-14	11,962	12,130	60	Marcellus
12	3-Oct-14	11,763	11,931	60	Marcellus
13	3-Oct-14	11,564	11,732	60	Marcellus
14	3-Oct-14	11,365	11,533	60	Marcellus
15	4-Oct-14	11,166	11,334	60	Marcellus
16	4-Oct-14	10,967	11,135	60	Marcellus
17	4-Oct-14	10,768	10,936	60	Marcellus
18	5-Oct-14	10,569	10,737	60	Marcellus
19	5-Oct-14	10,370	10,538	60	Marcellus
20	5-Oct-14	10,171	10,339	60	Marcellus
21	6-Oct-14	9,972	10,140	60	Marcellus
22	6-Oct-14	9,773	9,941	60	Marcellus
23	6-Oct-14	9,574	9,742	60	Marcellus
24	6-Oct-14	9,375	9,543	60	Marcellus
25	7-Oct-14	9,176	9,344	60	Marcellus
26	7-Oct-14	8,977	9,145	60	Marcellus
27	7-Oct-14	8,778	8,946	60	Marcellus
28	7-Oct-14	8,579	8,747	60	Marcellus
29	8-Oct-14	8,381	8,548	60	Marcellus
30	8-Oct-14	8,182	8,349	60	Marcellus
31	8-Oct-14	7,983	8,150	60	Marcellus
32	8-Oct-14	7,784	7,951	60	Marcellus
33	9-Oct-14	7,585	7,752	60	Marcellus

RECEIVED
 JUN 26 2015
 WV GEOLOGICAL SURVEY
 MORGANTOWN, WV

RECEIVED
 JUN 26 2015
 WV GEOLOGICAL SURVEY
 MORGANTOWN, WV

API 47-017-06334 Farm Name Trustees Chestnut Grove Church Well Number Gearhart Unit 2H

EXHIBIT 2

Stage No.	Stimulations Date	Avg Pump Rate	Avg Treatment Pressure (PSI)	Max Breakdown Pressure (PSI)	ISIP (PSI)	Amount of Proppant (lbs)	Amount of Water (bbls)	Amount of Nitrogen/ other (units)
1	28-Sep-14	63.0	7,594	6,956	8,805	215,570	7,900	N/A
2	30-Sep-14	60.0	7,220	6,521	4,935	156,250	6,692	N/A
3	1-Oct-14	60.1	7,185	6,653	5,023	230,075	6,599	N/A
4	1-Oct-14	63.5	6,918	6,279	5,162	217,100	6,597	N/A
5	1-Oct-14	63.0	6,564	6,622	5,040	235,750	6,528	N/A
6	2-Oct-14	63.0	6,644	6,166	4,766	236,750	6,505	N/A
7	2-Oct-14	64.7	6,559	6,096	4,925	236,740	6,473	N/A
8	2-Oct-14	64.7	6,748	6,071	5,164	214,265	6,248	N/A
9	2-Oct-14	63.0	6,445	5,735	4,726	237,900	6,439	N/A
10	3-Oct-14	63.0	6,845	5,699	5,178	224,900	6,234	N/A
11	3-Oct-14	64.8	6,901	5,716	5,041	239,295	6,393	N/A
12	3-Oct-14	64.9	6,783	5,909	4,859	206,175	6,959	N/A
13	3-Oct-14	63.0	6,488	6,052	4,838	235,500	6,343	N/A
14	4-Oct-14	60.0	7,016	6,093	4,331	188,000	6,470	N/A
15	4-Oct-14	65.8	6,746	5,779	5,101	235,195	6,371	N/A
16	4-Oct-14	63.0	6,519	5,507	4,914	234,800	6,283	N/A
17	5-Oct-14	63.0	6,239	5,360	4,754	233,500	6,262	N/A
18	5-Oct-14	65.5	6,469	5,537	5,732	235,525	6,238	N/A
19	5-Oct-14	63.0	6,285	5,847	5,087	233,950	6,214	N/A
20	5-Oct-14	63.0	6,284	5,368	5,058	235,400	6,188	N/A
21	6-Oct-14	63.0	6,345	5,752	4,505	236,720	6,174	N/A
22	6-Oct-14	64.0	6,365	5,527	4,727	237,260	6,125	N/A
23	6-Oct-14	63.0	6,555	5,862	4,669	236,500	6,132	N/A
24	7-Oct-14	64.0	6,527	5,682	5,406	236,150	6,105	N/A
25	7-Oct-14	64.0	6,469	5,554	5,014	229,780	6,000	N/A
26	7-Oct-14	63.0	6,533	5,438	5,096	227,040	6,061	N/A
27	7-Oct-14	64.0	6,423	5,483	4,808	233,450	6,028	N/A
28	7-Oct-14	62.0	6,210	5,318	5,128	213,150	6,554	N/A
29	8-Oct-14	64.0	6,379	5,550	5,078	235,900	5,999	N/A
30	8-Oct-14	63.0	6,378	5,562	5,127	229,160	5,929	N/A
31	8-Oct-14	64.0	6,212	5,536	4,994	235,280	5,951	N/A
32	8-Oct-14	63.0	6,137	5,479	5,182	234,400	5,928	N/A
33	9-Oct-14	63.0	6,052	6,076	4,812	236,660	5,903	N/A
	AVG=	63.3	6,577	5,842	5,090	7,504,090	208,825	TOTAL

RECEIVED

JUN 26 2015

WV GEOLOGICAL SURVEY
MORGANTOWN, WV

API 47-017-06334 Farm Name Trustees Chestnut Grove Church Well Number Gearhart Unit 2H

EXHIBIT 3

LITHOLOGY/ FORMATION	TOP DEPTH (TVD)	BOTTOM DEPTH (TVD)	TOP DEPTH (MD)	BOTTOM DEPTH (MD)
	From Surface	From Surface	From Surface	From Surface
Fresh Water	56'	N/A	56'	N/A
Sandstone	0	96	0	96
Shale/ Sandstone/ Trace Coal	est. 96	376	est. 96	376
Sandstone	est. 376	456	est. 376	456
Shale	est. 456	596	est. 456	596
Sandstone	est. 596	676	est. 596	676
Siltstone/ Shale	est. 676	816	est. 676	816
Sandstone	est. 816	856	est. 816	856
Shale	est. 856	916	est. 856	916
Sandstone/ Shale	est. 916	1016	est. 916	1016
Shale/ Limestone	est. 1016	1056	est. 1016	1056
Sandstone/Shale	est. 1056	1136	est. 1056	1136
Shale/ Siltstone	est. 1136	1256	est. 1136	1256
Siltstone	est. 1256	1356	est. 1256	1356
Sandstone	est. 1356	1396	est. 1356	1396
Shale/ Siltstone	est. 1396	1456	est. 1396	1456
Shale/ Limestone	est. 1456	1516	est. 1456	1516
Siltstone/ Sandstone	est. 1516	1816	est. 1516	1816
Siltstone/ Trace Coal	est. 1816	1836	est. 1816	1836
Sandstone	est. 1836	1916	est. 1836	1916
Shale	est. 1916	1956	est. 1916	1956
Siltstone/ Sandstone	est. 1956	2146	est. 1956	2146
Big Lime	2146	2234	2146	2234
Big Injun	2234	2431	2234	2431
Gantz Sand	2431	2572	2431	2572
Fifty Foot Sandstone	2572	2941	2572	2941
Gordon	2941	3283	2941	3283
Fifth Sandstone	3283	3347	3283	3347
Bayard	3347	3533	3347	3533
Warren	3533	3817	3533	3817
Speechley	3817	4013	3817	4013
Baltown	4013	4668	4013	4668
Bradford	4668	5126	4668	5126
Benson	5126	5381	5126	5381
Alexander	5381	5598	5381	5598
Elk	5598	6112	5598	6112
Rhinestreet	6112	6622	6112	6632
Sycamore	6598	6759	6608	6811
Middlesex	6759	6897	6811	7114
Burkett	6897	6932	7114	7209
Tully	6932	7,017	7209	7,539
Marcellus	7,017	NA	7,539	NA

*Please note Antero determines formation tops based on mud logs that are only run on one well on a multi-well pad The measured depth (MD) data on subsequent wells may be slightly different due to the well's unique departure.

RECEIVED
 JUN 26 2015
 WV GEOLOGICAL SURVEY
 MORGANTOWN, WV

Hydraulic Fracturing Fluid Product Component Information Disclosure



Job Start Date:	9/28/2014
Job End Date:	10/9/2014
State:	West Virginia
County:	Doddridge
API Number:	47-017-06334-00-00
Operator Name:	Antero Resources Corporation
Well Name and Number:	Gearhart Unit 2H
Longitude:	-80.69964700
Latitude:	39.18591400
Datum:	NAD83
Federal/Tribal Well:	NO
True Vertical Depth:	7,106
Total Base Water Volume (gal):	8,770,650
Total Base Non Water Volume:	388,793

Hydraulic Fracturing Fluid Composition:

Trade Name	Supplier	Purpose	Ingredients	Chemical Abstract Service Number (CAS #)	Maximum Ingredient Concentration in Additive (% by mass)**	Maximum Ingredient Concentration in HF Fluid (% by mass)**	Comments
Water	Antero Resources	Base Fluid	Water	7732-18-5	100.00000	90.30648	
Sand	U.S. Well Services, LLC	Proppant	Crystalline Silica, quartz	14808-60-7	100.00000	9.26444	
LGC-15	U.S. Well Services, LLC	Gelling Agents	Guar Gum	9000-30-0	50.00000	0.08936	
			Petroleum Distillates	64742-47-8	60.00000	0.08463	
			Suspending agent (solid)	14808-60-7	3.00000	0.01367	
			Surfactant	68439-51-0	3.00000	0.00536	
HCL Acid (12.6%-18.0%)	U.S. Well Services, LLC	Bulk Acid	Water	7732-18-5	87.50000	0.09000	
			Hydrogen Chloride	7641-01-1	18.00000	0.02150	
WFFRA-405	U.S. Well Services, LLC	Friction Reducer	Water	7732-18-5	40.00000	0.03393	
			Anionic Polyacrylamide	Proprietary		0.03393	
			Petroleum Distillates	64742-47-8	22.00000	0.02731	
			Crystalline Salt	12125-02-9	5.00000	0.00424	

RECEIVED
 JUN 26 2015
 WYOMING GEOLOGICAL SURVEY
 MORRISON, WYOMING

SI-1000	U.S. Well Services, LLC	Scale Inhibitor	Ethoxylated alcohol blend	Proprietary	5.00000	0.00424
			Anionic Copolymer	Proprietary		0.00420
			Ethylene Glycol	107-21-1	20.00000	0.00379
			Water	7732-18-5	30.00000	0.00316
K-BAC 1020	U.S. Well Services, LLC	Anti-Bacterial Agent				
			2,2-dibromo-3-nitropropionamide	10222-01-2	20.00000	0.00428
			Deionized Water	7732-18-5	28.00000	0.00244
AP One	U.S. Well Services, LLC	Gel Breakers				
			Ammonium Persulfate	7727-54-0	100.00000	0.00266
AI-301	U.S. Well Services	Acid Corrosion Inhibitors				
			Diethylene Glycol	111-46-6	30.00000	0.00014
			Methenamine	100-97-0	20.00000	0.00011
			Hydrogen Chloride	7647-01-0	10.00000	0.00005
			Polyethylene polyamine	88603-67-8	10.00000	0.00004
			Coco amine	51791-14-8	5.00000	0.00002
Ingredients shown above are subject to 29 CFR 1910.1200(i) and appear on Material Safety Data Sheets (MSDS). Ingredients shown below are Non-MSDS.						

* Total Water Volume sources may include fresh water, produced water, and/or recycled water
 ** Information is based on the maximum potential for concentration and thus the total may be over 100%

Note: For Field Development Products (products that begin with FDP), MSDS level only information has been provided.
 Ingredient information for chemicals subject to 29 CFR 1910.1200(i) and Appendix D are obtained from suppliers Material Safety Data Sheets (MSDS)

LATITUDE 39°12'30"

9,398'

6,702' TO BOTTOM HOLE

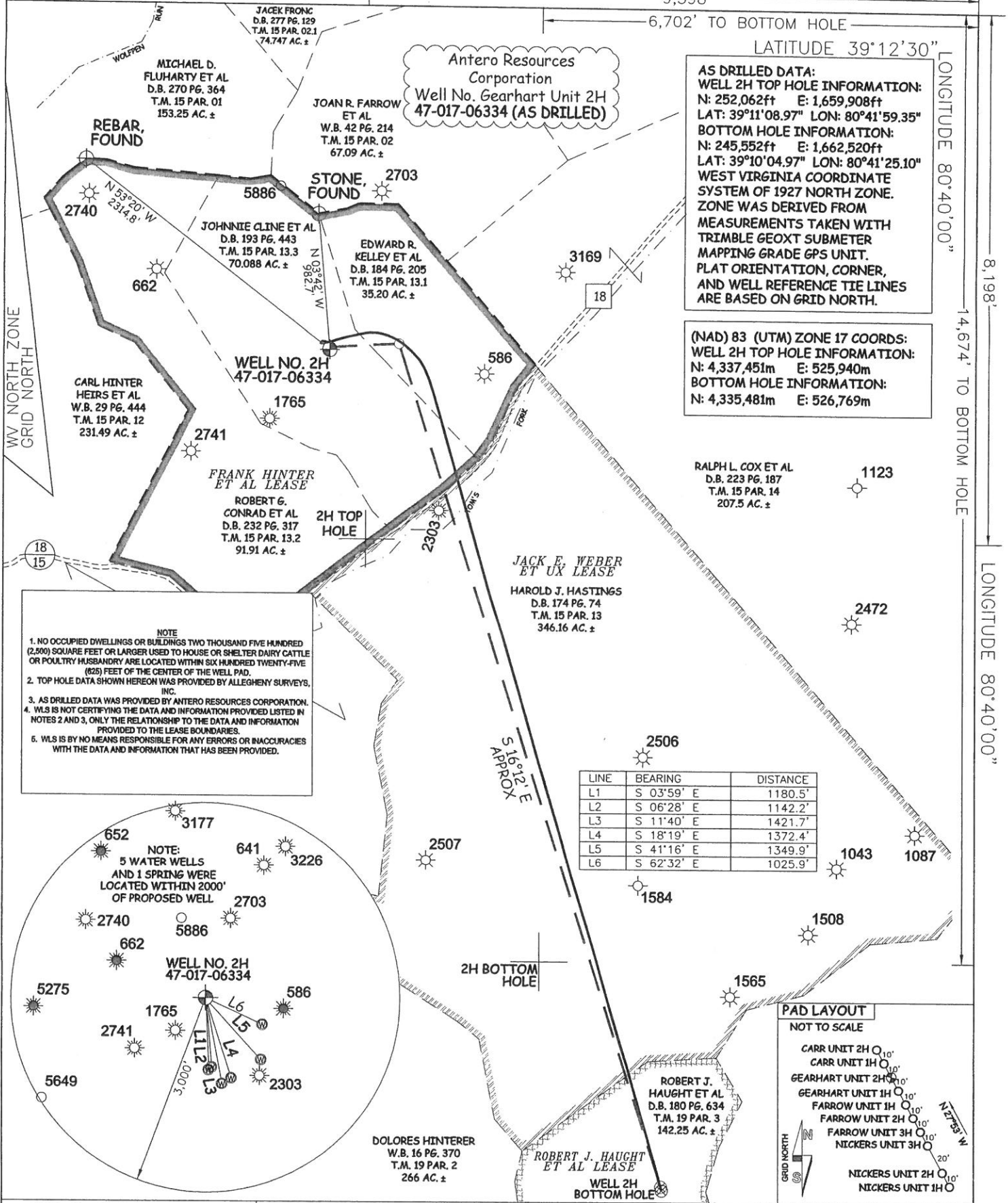
LATITUDE 39°12'30"

LONGITUDE 80°40'00"

8,198'

14,674' TO BOTTOM HOLE

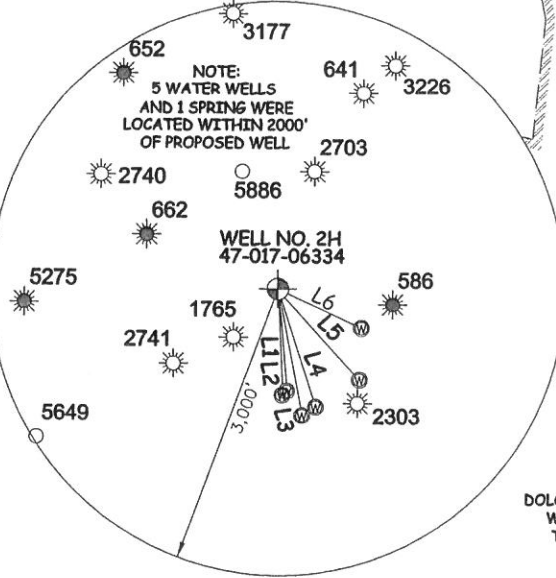
LONGITUDE 80°40'00"



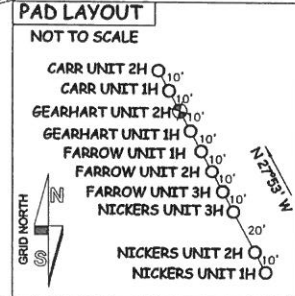
AS DRILLED DATA:
WELL 2H TOP HOLE INFORMATION:
 N: 252,062ft E: 1,659,908ft
 LAT: 39°11'08.97" LON: 80°41'59.35"
BOTTOM HOLE INFORMATION:
 N: 245,552ft E: 1,662,520ft
 LAT: 39°10'04.97" LON: 80°41'25.10"
 WEST VIRGINIA COORDINATE SYSTEM OF 1927 NORTH ZONE. ZONE WAS DERIVED FROM MEASUREMENTS TAKEN WITH TRIMBLE GEOXT SUBMETER MAPPING GRADE GPS UNIT. PLAT ORIENTATION, CORNER, AND WELL REFERENCE TIE LINES ARE BASED ON GRID NORTH.

(NAD) 83 (UTM) ZONE 17 COORDS:
WELL 2H TOP HOLE INFORMATION:
 N: 4,337,451m E: 525,940m
BOTTOM HOLE INFORMATION:
 N: 4,335,481m E: 526,769m

NOTE
 1. NO OCCUPIED DWELLINGS OR BUILDINGS TWO THOUSAND FIVE HUNDRED (2,500) SQUARE FEET OR LARGER USED TO HOUSE OR SHELTER DAIRY CATTLE OR POULTRY HUSBANDRY ARE LOCATED WITHIN SIX HUNDRED TWENTY-FIVE (625) FEET OF THE CENTER OF THE WELL PAD.
 2. TOP HOLE DATA SHOWN HEREON WAS PROVIDED BY ALLEGHENY SURVEYS, INC.
 3. AS DRILLED DATA WAS PROVIDED BY ANTERO RESOURCES CORPORATION.
 4. WLS IS NOT CERTIFYING THE DATA AND INFORMATION PROVIDED LISTED IN NOTES 2 AND 3, ONLY THE RELATIONSHIP TO THE DATA AND INFORMATION PROVIDED TO THE LEASE BOUNDARIES.
 5. WLS IS BY NO MEANS RESPONSIBLE FOR ANY ERRORS OR INACCURACIES WITH THE DATA AND INFORMATION THAT HAS BEEN PROVIDED.



LINE	BEARING	DISTANCE
L1	S 03°59' E	1180.5'
L2	S 06°28' E	1142.2'
L3	S 11°40' E	1421.7'
L4	S 18°19' E	1372.4'
L5	S 41°16' E	1349.9'
L6	S 62°32' E	1025.9'



JOB # 13-021WA
 DRAWING # GEARHART2HAD
 SCALE 1" = 1000'
 MINIMUM DEGREE OF ACCURACY SUBMETER
 PROVEN SOURCE OF ELEV. SUBMETER MAPPING GRADE GPS



STATE OF WEST VIRGINIA, DIVISION OF ENVIRONMENTAL PROTECTION, OFFICE OF OIL AND GAS

WILLOW LAND SURVEYING PLLC
 220 MASONIC AVE. PENNSBORO WEST VIRGINIA 26415

LEGEND
 - - - - - Surface Owner Boundary Lines +/-
 - - - - - Interior Surface Tracts +/-
 X Existing Fence
 ⊕ Found monument, as noted
 ○ Proposed Well Path
 ⊗ As Drilled Well Path

STATE OF WEST VIRGINIA DEPARTMENT OF ENERGY DIVISION OF OIL AND GAS

WELL TYPE: OIL ___ GAS X LIQUID INJECTION ___ WASTE DISPOSAL ___
 (IF "GAS") PRODUCTION X STORAGE ___ DEEP ___ SHALLOW X
 LOCATION: ELEVATION 1,105' ORIGINAL - 1,096' AS DRILLED WATERSHED HEADWATERS MIDDLE ISLAND CREEK
 QUADRANGLE NEW MILTON 7.5' DISTRICT NEW MILTON COUNTY DODDRIDGE

DATE 06/08/15
 OPERATOR'S WELL# GEARHART UNIT #2H

SURFACE OWNER JOHNNIE CLINE ET AL ACREAGE 70.088 ACRES +/-
 OIL & GAS ROYALTY OWNER FRANK HINTER ET AL; JACK E. WEBER ET UX; ROBERT J. HAUGHT ET AL LEASE ACREAGE 329.73 ACRES +/-; 210.25 ACRES +/-; 143 ACRES +/-

PROPOSED WORK: DRILL ___ CONVERT ___ DRILL DEEPER ___ REDRILL ___ FRACTURE OR STIMULATE ___
 PLUG OFF OLD FORMATION ___ PERFORATE NEW FORMATION ___ OTHER PHYSICAL CHANGE IN WELL (SPECIFY) (X) AS DRILLED
 TARGET FORMATION MARCELLUS ESTIMATED DEPTH 7,106' TVD 14,206' MD

WELL OPERATOR ANTERO RESOURCES CORP. ADDRESS 1615 WYNKOOP STREET DENVER, CO 80202
 DESIGNATED AGENT DIANNA STAMPER CT CORPORATION SYSTEM ADDRESS 5400 D BIG TYLER ROAD CHARLESTON, WV 25313

COUNTY NAME PERMIT