



ANTERO RESOURCES CORPORATION

Location: Doddridge Co., WV
 Field: Doddridge
 Facility: Susie Jane Pad

Slot: Slot #02
 Well: Chumley Unit 2H
 Wellbore: Chumley Unit 2H AWB

True vertical depth is Chumley Unit 2H AWB Proj 13656.02	Grid System: NAD27 / UTM Zone 17 North, US feet
True vertical depths are referenced to Frontier 22 (KB)	- Wellpath was transformed from a different geographic datum
Measured depths are referenced to Frontier 22 (KB)	North Reference: Grid north
Frontier 22 (KB) to Mean Sea Level: 1272 feet	Scale: True Azimuth
Mean Sea Level to Mud Line (At Slot: Slot #02): -1248 feet	Depth: see P-Well
Coordinates are in feet referenced to SAK	Created by: Bore on 2017-09-15
	Database: WellArchived DB

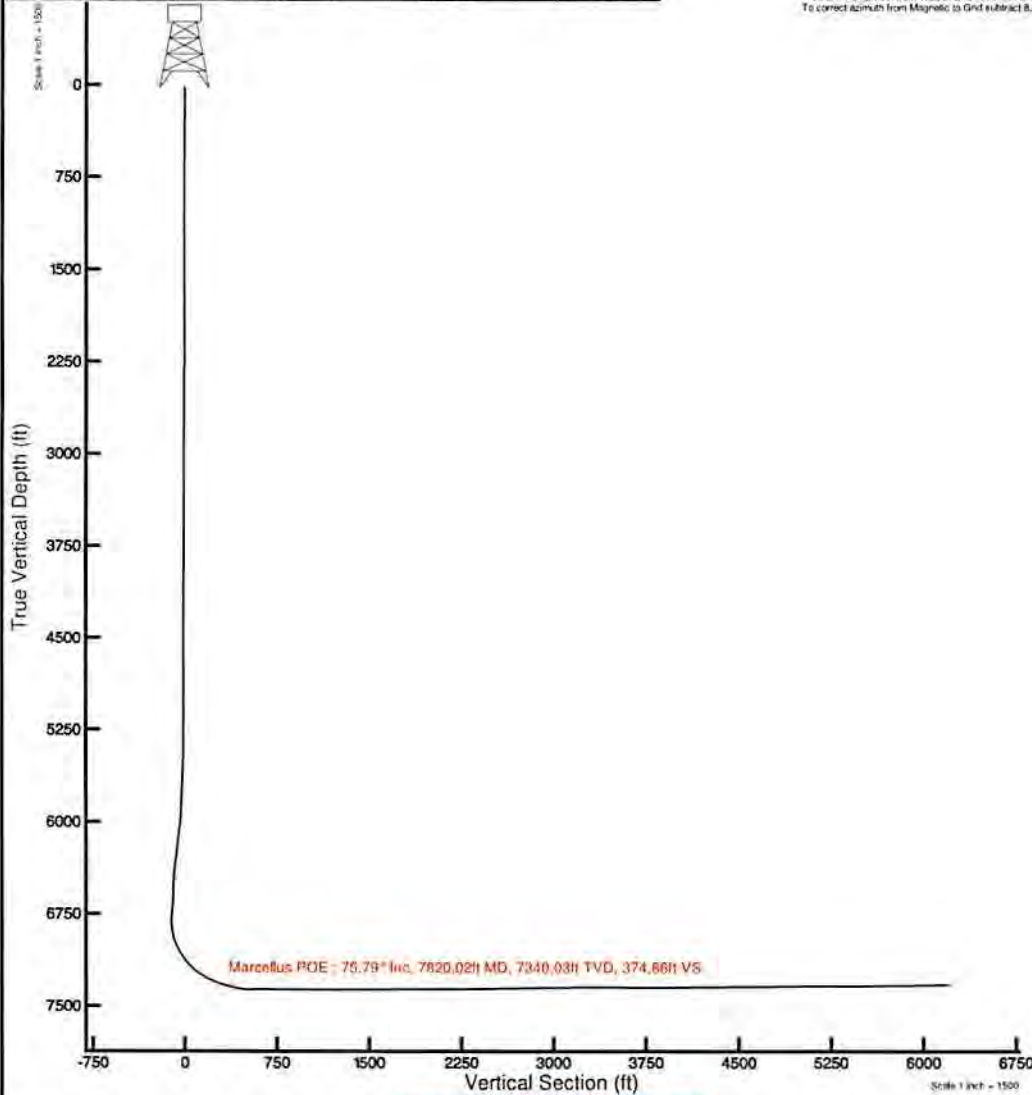
Location Information					
Facility Name		Grid East (US ft)	Grid North (US ft)	Latitude	Longitude
Susie Jane Pad		1744533.890	14254558.340	39°15'13.895"N	80°37'55.929"W
Slot	Local N (ft)	Local E (ft)	Grid East (US ft)	Grid North (US ft)	Latitude
Slot #02	0.00	0.00	1744533.890	14254558.340	39°15'13.895"N
Comment: Chumley Unit 2H					
Frontier 22 (KB) to Mud Line (At Slot: Slot #02)				25ft	
Mean Sea Level to Mud Line (At Slot: Slot #02)				-1248ft	
Frontier 22 (KB) to Mean Sea Level				1272ft	



KRF-12 (1900.0 to 2020.0) Dip: 68.51° Field: 51865.3 nT
 Magnetic North is 8.64 degrees West of True North (at 9/15/2017)
 Grid North is 0.23 degrees East of True North
 To correct azimuth from True to Grid subtract 0.23 degrees
 To correct azimuth from Magnetic to Grid subtract 8.87 degrees

Wellpath Composition

Start ME (ft)	End ME (ft)	Tool	Model	Log Name/Comment	Wellbore
25.00	844.48	SC4 Reamer v1.04	SC4 Reamer v1.04	01_SCK_BAL_Keeper_Ops(112 - 844.48)	Chumley Unit 2H AWB
844.48	11052.01	SC4 gMWD v1.06	SC4 gMWD v1.06 (Standard)	04_SCK_MWD_0841.06_08863.02 - 11052.01	Chumley Unit 2H AWB
11052.01	11609.01	BB40 2940	BB40 Drilling Tool	Prepared to SL	Chumley Unit 2H AWB



Azimuth 152.11° with reference 0.00 N, 0.00 E



Actual Wellpath Report

Chumley Unit 2H AWP Proj: 13650.03'

Page 1 of 15



REFERENCE WELLPATH IDENTIFICATION			
Operator	ANTERO RESOURCES CORPORATION	Slot	Slot #02
Area	Doddridge Co., WV	Well	Chumley Unit 2H
Field	Doddridge	Wellbore	Chumley Unit 2H AWB
Facility	Susie Jane Pad		

REPORT SETUP INFORMATION			
Projection System	NAD27 / UTM Zone 17 North, US feet	Software System	WellArchitect® 5.0
North Reference	Grid	User	Lhare
Scale	0.999612	Report Generated	9/15/2017 at 12:44:58 PM
Convergence at slot	0.24° East	Database/Source file	Well Architect DB/Chumley_Unit_2H_AWP_Proj_13650.03_.xml

WELLPATH LOCATION						
	Local coordinates		Grid coordinates		Geographic coordinates	
	North[ft]	East[ft]	Easting[US ft]	Northing[US ft]	Latitude	Longitude
Slot Location	0.00	0.00	1744533.89	14254558.34	39°15'13.695"N	80°37'55.929"W
Facility Reference Pt			1744533.89	14254558.34	39°15'13.695"N	80°37'55.929"W
Field Reference Pt			0.00	0.00	0°00'00.000"	85°29'19.301"W

WELLPATH DATUM			
Calculation method	Minimum curvature	Frontier 22 (KB) to Facility Vertical Datum	25.00ft
Horizontal Reference Pt	Slot	Frontier 22 (KB) to Mean Sea Level	1273.00ft
Vertical Reference Pt	Frontier 22 (KB)	Frontier 22 (KB) to Mud Line at Slot (Slot #02)	25.00ft
MD Reference Pt	Frontier 22 (KB)	Section Origin	N 0.00, E 0.00 ft
Field Vertical Reference	Mean Sea Level	Section Azimuth	162.11°



Actual Wellpath Report

Chumley Unit 2H AWP Proj: 13650.03'

Page 2 of 15



REFERENCE WELLPATH IDENTIFICATION			
Operator	ANTERO RESOURCES CORPORATION		Slot #02
Area	Doddridge Co., WV		Well
Field	Doddridge		Wellbore
Facility	Susie Jane Pad		Chumley Unit 2H AWB

WELLPATH DATA (367 stations) † = interpolated/extrapolated station																
MD (ft)	Inclination (°)	Azimuth (°)	TVD (ft)	Vert Sect (ft)	North (ft)	East (ft)	Grid East (US ft)	Grid North (US ft)	Latitude	Longitude	Closure Dist (ft)	Closure Dir (°)	DLS (°/100ft)	Build Rate (°/100ft)	Turn Rate (°/100ft)	
0.00	0.000	358.570	0.00	0.00	0.00	0.00	1744533.89	14254558.34	39°15'13.695"N	80°37'55.929"W	0.00	0.000	0.00	0.00	0.00	
25.00	0.000	358.570	25.00	0.00	0.00	0.00	1744533.89	14254558.34	39°15'13.695"N	80°37'55.929"W	0.00	0.000	0.00	0.00	0.00	
112.00	0.310	358.570	112.00	-0.23	0.24	-0.01	1744533.88	14254558.58	39°15'13.698"N	80°37'55.929"W	0.24	358.570	0.36	0.36	-1.64	
137.00	0.350	357.260	137.00	-0.36	0.38	-0.01	1744533.88	14254558.72	39°15'13.699"N	80°37'55.929"W	0.38	358.306	0.16	0.16	-5.24	
162.00	0.190	334.660	162.00	-0.48	0.49	-0.03	1744533.86	14254558.83	39°15'13.700"N	80°37'55.930"W	0.49	356.216	0.76	-0.64	-90.40	
187.00	0.140	6.610	187.00	-0.55	0.56	-0.05	1744533.84	14254558.90	39°15'13.701"N	80°37'55.930"W	0.56	355.226	0.41	-0.20	127.80	
212.00	0.200	351.820	212.00	-0.62	0.63	-0.05	1744533.84	14254558.97	39°15'13.702"N	80°37'55.930"W	0.64	355.535	0.30	0.24	-59.16	
237.00	0.170	311.690	237.00	-0.69	0.70	-0.08	1744533.81	14254559.04	39°15'13.702"N	80°37'55.930"W	0.71	353.224	0.52	-0.12	-160.52	
262.00	0.090	288.970	262.00	-0.74	0.73	-0.13	1744533.76	14254559.07	39°15'13.703"N	80°37'55.931"W	0.74	349.968	0.37	-0.32	-90.88	
287.00	0.020	295.370	287.00	-0.75	0.74	-0.15	1744533.74	14254559.08	39°15'13.703"N	80°37'55.931"W	0.76	348.399	0.28	-0.28	25.60	
312.00	0.130	270.560	312.00	-0.76	0.74	-0.18	1744533.71	14254559.08	39°15'13.703"N	80°37'55.932"W	0.77	346.064	0.45	0.44	-99.24	
337.00	0.250	282.150	337.00	-0.80	0.76	-0.27	1744533.62	14254559.09	39°15'13.703"N	80°37'55.933"W	0.80	340.586	0.50	0.48	46.36	
362.00	0.310	353.340	362.00	-0.89	0.83	-0.33	1744533.56	14254559.17	39°15'13.704"N	80°37'55.933"W	0.90	338.569	1.32	0.24	284.76	
387.00	0.240	295.950	387.00	-1.00	0.92	-0.38	1744533.51	14254559.26	39°15'13.704"N	80°37'55.934"W	1.00	337.525	1.08	-0.28	-229.56	
412.00	0.250	320.260	412.00	-1.08	0.99	-0.46	1744533.43	14254559.33	39°15'13.705"N	80°37'55.935"W	1.09	334.853	0.41	0.04	97.24	
437.00	0.220	319.800	437.00	-1.18	1.07	-0.53	1744533.36	14254559.41	39°15'13.706"N	80°37'55.936"W	1.19	333.593	0.12	-0.12	-1.84	
462.00	0.150	289.260	462.00	-1.24	1.11	-0.59	1744533.30	14254559.45	39°15'13.706"N	80°37'55.937"W	1.26	332.035	0.47	-0.28	-122.16	
487.00	0.260	315.450	487.00	-1.31	1.17	-0.66	1744533.23	14254559.51	39°15'13.707"N	80°37'55.938"W	1.34	330.394	0.57	0.44	104.76	
512.00	0.420	262.810	512.00	-1.38	1.20	-0.79	1744533.10	14254559.53	39°15'13.707"N	80°37'55.939"W	1.43	326.423	1.34	0.64	-210.56	
537.00	0.340	274.090	537.00	-1.43	1.19	-0.96	1744532.93	14254559.53	39°15'13.707"N	80°37'55.941"W	1.53	321.133	0.44	-0.32	45.12	
562.00	0.370	278.800	562.00	-1.49	1.21	-1.11	1744532.78	14254559.55	39°15'13.707"N	80°37'55.943"W	1.64	317.336	0.17	0.12	18.84	
587.00	0.360	296.090	587.00	-1.58	1.25	-1.26	1744532.63	14254559.59	39°15'13.708"N	80°37'55.945"W	1.78	314.799	0.44	-0.04	69.16	
612.00	0.330	298.410	611.99	-1.69	1.32	-1.40	1744532.49	14254559.66	39°15'13.708"N	80°37'55.947"W	1.92	313.443	0.13	-0.12	9.28	
637.00	0.290	307.380	636.99	-1.79	1.39	-1.51	1744532.38	14254559.73	39°15'13.709"N	80°37'55.948"W	2.06	312.736	0.25	-0.16	35.88	
662.00	0.350	274.040	661.99	-1.87	1.44	-1.64	1744532.25	14254559.78	39°15'13.710"N	80°37'55.950"W	2.18	311.325	0.77	0.24	-133.36	
687.00	0.390	279.210	686.99	-1.94	1.46	-1.80	1744532.09	14254559.80	39°15'13.710"N	80°37'55.952"W	2.31	309.059	0.21	0.16	20.68	
712.00	0.390	279.170	711.99	-2.02	1.48	-1.96	1744531.93	14254559.82	39°15'13.710"N	80°37'55.954"W	2.46	307.087	0.00	0.00	-0.16	
737.00	0.360	283.500	736.99	-2.10	1.52	-2.12	1744531.77	14254559.86	39°15'13.710"N	80°37'55.956"W	2.61	305.522	0.16	-0.12	17.32	
762.00	0.420	285.180	761.99	-2.19	1.56	-2.29	1744531.60	14254559.90	39°15'13.711"N	80°37'55.958"W	2.77	304.254	0.24	0.24	6.72	
787.00	0.440	276.210	786.99	-2.28	1.59	-2.47	1744531.42	14254559.93	39°15'13.711"N	80°37'55.961"W	2.94	302.792	0.28	0.08	-35.88	



Actual Wellpath Report

Chumley Unit 2H AWP Proj: 13650.03'

Page 3 of 15



REFERENCE WELLPATH IDENTIFICATION			
Operator	ANTERO RESOURCES CORPORATION		Slot #02
Area	Doddridge Co., WV		Well
Field	Doddridge		Wellbore
Facility	Susie Jane Pad		Chumley Unit 2H AWP

WELLPATH DATA (367 stations)															
MD (ft)	Inclination (°)	Azimuth (°)	TVD (ft)	Vert Sect (ft)	North (ft)	East (ft)	Grid East (US ft)	Grid North (US ft)	Latitude	Longitude	Closure Dist (ft)	Closure Dir (°)	DLS (°/100ft)	Build Rate (°/100ft)	Turn Rate (°/100ft)
812.00	0.350	283.180	811.99	-2.35	1.62	-2.64	1744531.25	14254559.96	39°15'13.711"N	80°37'55.963"W	3.10	301.525	0.41	-0.36	27.88
837.00	0.350	280.090	836.99	-2.43	1.65	-2.79	1744531.10	14254559.99	39°15'13.712"N	80°37'55.965"W	3.24	300.607	0.08	0.00	-12.36
862.00	0.290	291.000	861.99	-2.51	1.69	-2.93	1744530.96	14254560.03	39°15'13.712"N	80°37'55.966"W	3.38	299.975	0.34	-0.24	43.64
887.00	0.330	292.420	886.99	-2.59	1.74	-3.05	1744530.84	14254560.08	39°15'13.713"N	80°37'55.968"W	3.51	299.659	0.16	0.16	5.68
912.00	0.310	286.680	911.99	-2.68	1.79	-3.18	1744530.71	14254560.12	39°15'13.713"N	80°37'55.970"W	3.65	299.278	0.15	-0.08	-22.96
937.00	0.320	268.660	936.99	-2.74	1.80	-3.32	1744530.57	14254560.14	39°15'13.713"N	80°37'55.971"W	3.78	298.515	0.40	0.04	-72.08
962.00	0.410	260.270	961.99	-2.77	1.79	-3.48	1744530.41	14254560.13	39°15'13.713"N	80°37'55.973"W	3.91	297.194	0.42	0.36	-33.56
987.00	0.330	278.150	986.99	-2.81	1.78	-3.64	1744530.26	14254560.12	39°15'13.713"N	80°37'55.975"W	4.05	296.101	0.56	-0.32	71.52
1012.00	0.360	273.160	1011.99	-2.87	1.80	-3.79	1744530.11	14254560.14	39°15'13.713"N	80°37'55.977"W	4.19	295.379	0.17	0.12	-19.96
1037.00	0.290	284.360	1036.99	-2.93	1.82	-3.93	1744529.97	14254560.16	39°15'13.713"N	80°37'55.979"W	4.32	294.825	0.38	-0.28	44.80
1062.00	0.280	264.110	1061.99	-2.98	1.83	-4.05	1744529.84	14254560.16	39°15'13.714"N	80°37'55.981"W	4.44	294.274	0.40	-0.04	-81.00
1087.00	0.260	263.360	1086.99	-3.00	1.81	-4.16	1744529.73	14254560.15	39°15'13.713"N	80°37'55.982"W	4.54	293.519	0.08	-0.08	-3.00
1112.00	0.270	276.370	1111.99	-3.04	1.81	-4.28	1744529.61	14254560.15	39°15'13.713"N	80°37'55.984"W	4.65	292.954	0.24	0.04	52.04
1137.00	0.240	270.410	1136.99	-3.08	1.82	-4.39	1744529.50	14254560.16	39°15'13.714"N	80°37'55.985"W	4.75	292.509	0.16	-0.12	-23.84
1162.00	0.290	272.260	1161.99	-3.12	1.82	-4.51	1744529.39	14254560.16	39°15'13.714"N	80°37'55.986"W	4.86	292.019	0.20	0.20	7.40
1187.00	0.200	264.850	1186.99	-3.15	1.82	-4.61	1744529.28	14254560.16	39°15'13.714"N	80°37'55.988"W	4.96	291.541	0.38	-0.36	-29.64
1212.00	0.230	256.730	1211.98	-3.16	1.81	-4.70	1744529.19	14254560.14	39°15'13.713"N	80°37'55.989"W	5.04	290.993	0.17	0.12	-32.48
1237.00	0.270	258.350	1236.98	-3.17	1.78	-4.81	1744529.08	14254560.12	39°15'13.713"N	80°37'55.990"W	5.13	290.322	0.16	0.16	6.48
1262.00	0.250	244.290	1261.98	-3.17	1.75	-4.92	1744528.97	14254560.09	39°15'13.713"N	80°37'55.992"W	5.22	289.549	0.27	-0.08	-56.24
1287.00	0.350	241.590	1286.98	-3.15	1.69	-5.03	1744528.86	14254560.03	39°15'13.712"N	80°37'55.993"W	5.31	288.519	0.40	0.40	-10.80
1312.00	0.350	252.950	1311.98	-3.14	1.63	-5.17	1744528.72	14254559.97	39°15'13.712"N	80°37'55.995"W	5.42	287.461	0.28	0.00	45.44
1337.00	0.400	247.380	1336.98	-3.13	1.57	-5.33	1744528.56	14254559.91	39°15'13.711"N	80°37'55.997"W	5.56	286.435	0.25	0.20	-22.28
1362.00	0.290	262.230	1361.98	-3.14	1.53	-5.47	1744528.42	14254559.87	39°15'13.711"N	80°37'55.999"W	5.68	285.619	0.56	-0.44	59.40
1387.00	0.340	255.040	1386.98	-3.15	1.50	-5.61	1744528.29	14254559.84	39°15'13.710"N	80°37'56.000"W	5.80	284.998	0.25	0.20	-28.76
1412.00	0.250	254.510	1411.98	-3.16	1.47	-5.73	1744528.16	14254559.81	39°15'13.710"N	80°37'56.002"W	5.91	284.371	0.36	-0.36	-2.12
1437.00	0.240	252.950	1436.98	-3.16	1.44	-5.83	1744528.06	14254559.78	39°15'13.710"N	80°37'56.003"W	6.01	283.852	0.05	-0.04	-6.24
1462.00	0.330	257.220	1461.98	-3.17	1.41	-5.95	1744527.94	14254559.75	39°15'13.709"N	80°37'56.005"W	6.12	283.298	0.37	0.36	17.08
1487.00	0.270	261.040	1486.98	-3.18	1.38	-6.08	1744527.81	14254559.72	39°15'13.709"N	80°37'56.006"W	6.24	282.802	0.25	-0.24	15.28
1512.00	0.240	259.960	1511.98	-3.20	1.36	-6.19	1744527.70	14254559.70	39°15'13.709"N	80°37'56.008"W	6.34	282.421	0.12	-0.12	-4.32
1537.00	0.260	243.660	1536.98	-3.20	1.33	-6.29	1744527.60	14254559.67	39°15'13.709"N	80°37'56.009"W	6.43	281.926	0.29	0.08	-65.20



Actual Wellpath Report

Chumley Unit 2H AWP Proj: 13650.03'
Page 4 of 15



REFERENCE WELLPATH IDENTIFICATION				
Operator	ANTERO RESOURCES CORPORATION		Slot	Slot #02
Area	Doddridge Co., WV		Well	Chumley Unit 2H
Field	Doddridge		Wellbore	Chumley Unit 2H AWB
Facility	Susie Jane Pad			

WELLPATH DATA (367 stations)															
MD [ft]	Inclination [°]	Azimuth [°]	TVD [ft]	Vert Sect [ft]	North [ft]	East [ft]	Grid East [US ft]	Grid North [US ft]	Latitude	Longitude	Closure Dist [ft]	Closure Dir [°]	DLS [°/100ft]	Build Rate [°/100ft]	Turn Rate [°/100ft]
1562.00	0.330	243.440	1561.98	-3.18	1.27	-6.41	1744527.48	14254559.61	39°15'13.708"N	80°37'56.011"W	6.53	281.225	0.28	0.28	-0.88
1587.00	0.300	249.810	1586.98	-3.17	1.22	-6.53	1744527.36	14254559.56	39°15'13.708"N	80°37'56.012"W	6.65	280.551	0.18	-0.12	25.48
1612.00	0.400	251.830	1611.98	-3.16	1.17	-6.68	1744527.21	14254559.51	39°15'13.707"N	80°37'56.014"W	6.78	279.914	0.40	0.40	8.08
1637.00	0.450	245.780	1636.98	-3.15	1.10	-6.85	1744527.04	14254559.44	39°15'13.706"N	80°37'56.016"W	6.94	279.120	0.27	0.20	-24.20
1662.00	0.310	264.680	1661.98	-3.16	1.05	-7.01	1744526.88	14254559.39	39°15'13.706"N	80°37'56.018"W	7.09	278.547	0.74	-0.56	75.60
1687.00	0.370	254.490	1686.98	-3.17	1.03	-7.15	1744526.74	14254559.37	39°15'13.706"N	80°37'56.020"W	7.23	278.158	0.34	0.24	-40.76
1712.00	0.240	260.000	1711.98	-3.18	0.99	-7.28	1744526.61	14254559.33	39°15'13.705"N	80°37'56.022"W	7.35	277.778	0.53	-0.52	22.04
1737.00	0.240	248.110	1736.98	-3.19	0.97	-7.38	1744526.51	14254559.31	39°15'13.705"N	80°37'56.023"W	7.45	277.455	0.20	0.00	-47.56
1762.00	0.270	236.570	1761.98	-3.17	0.91	-7.48	1744526.41	14254559.25	39°15'13.705"N	80°37'56.024"W	7.54	276.967	0.24	0.12	-46.16
1787.00	0.100	241.530	1786.98	-3.15	0.87	-7.55	1744526.34	14254559.21	39°15'13.704"N	80°37'56.025"W	7.60	276.584	0.68	-0.68	19.84
1812.00	0.280	234.130	1811.98	-3.13	0.83	-7.62	1744526.28	14254559.16	39°15'13.704"N	80°37'56.026"W	7.66	276.182	0.73	0.72	-29.60
1837.00	0.290	231.600	1836.98	-3.08	0.75	-7.72	1744526.18	14254559.09	39°15'13.703"N	80°37'56.027"W	7.75	275.551	0.06	0.04	-10.12
1862.00	0.230	230.490	1861.98	-3.04	0.68	-7.80	1744526.09	14254559.02	39°15'13.702"N	80°37'56.028"W	7.83	274.970	0.24	-0.24	-4.44
1887.00	0.090	230.920	1886.98	-3.02	0.63	-7.86	1744526.03	14254558.97	39°15'13.702"N	80°37'56.029"W	7.88	274.616	0.56	-0.56	1.72
1912.00	0.120	241.500	1911.98	-3.01	0.61	-7.90	1744526.00	14254558.95	39°15'13.702"N	80°37'56.030"W	7.92	274.414	0.14	0.12	42.32
1937.00	0.240	232.310	1936.98	-2.98	0.57	-7.96	1744525.93	14254558.90	39°15'13.701"N	80°37'56.030"W	7.98	274.060	0.49	0.48	-36.76
1962.00	0.080	11.150	1961.98	-2.98	0.55	-8.00	1744525.89	14254558.89	39°15'13.701"N	80°37'56.031"W	8.02	273.935	1.22	-0.64	555.36
1987.00	0.060	355.030	1986.98	-3.01	0.58	-8.00	1744525.90	14254558.92	39°15'13.701"N	80°37'56.031"W	8.02	274.151	0.11	-0.08	-64.48
2012.00	0.050	273.200	2011.98	-3.03	0.59	-8.01	1744525.88	14254558.83	39°15'13.702"N	80°37'56.031"W	8.03	274.242	0.29	-0.04	-327.32
2037.00	0.760	230.580	2036.97	-2.97	0.49	-8.15	1744525.74	14254558.83	39°15'13.701"N	80°37'56.033"W	8.16	273.437	2.90	2.84	-170.48
2062.00	0.360	36.120	2061.97	-2.95	0.45	-8.23	1744525.66	14254558.79	39°15'13.700"N	80°37'56.034"W	8.24	273.112	4.45	-1.60	662.16
2087.00	0.280	232.310	2086.97	-2.98	0.47	-8.23	1744525.66	14254558.81	39°15'13.700"N	80°37'56.034"W	8.25	273.293	2.53	-0.32	-655.24
2112.00	0.140	247.280	2111.97	-2.96	0.42	-8.31	1744525.58	14254558.76	39°15'13.700"N	80°37'56.035"W	8.32	272.925	0.60	-0.56	59.88
2137.00	0.150	266.880	2136.97	-2.96	0.41	-8.37	1744525.52	14254558.75	39°15'13.700"N	80°37'56.036"W	8.38	272.811	0.20	0.04	78.40
2162.00	0.120	306.690	2161.97	-2.99	0.42	-8.42	1744525.47	14254558.76	39°15'13.700"N	80°37'56.036"W	8.43	272.887	0.38	-0.12	159.24
2187.00	0.160	292.280	2186.97	-3.04	0.45	-8.48	1744525.42	14254558.79	39°15'13.700"N	80°37'56.037"W	8.49	273.063	0.21	0.16	-57.64
2212.00	0.200	276.650	2211.97	-3.08	0.47	-8.55	1744525.34	14254558.81	39°15'13.700"N	80°37'56.038"W	8.57	273.158	0.25	0.16	-62.52
2237.00	0.160	275.460	2236.97	-3.11	0.48	-8.63	1744525.26	14254558.82	39°15'13.700"N	80°37'56.039"W	8.64	273.185	0.16	-0.16	-4.76
2262.00	0.110	340.680	2261.97	-3.15	0.51	-8.67	1744525.22	14254558.85	39°15'13.701"N	80°37'56.039"W	8.69	273.341	0.61	-0.20	260.88
2287.00	0.330	27.770	2286.97	-3.22	0.59	-8.65	1744525.25	14254558.93	39°15'13.702"N	80°37'56.039"W	8.67	273.920	1.07	0.88	188.36



Actual Wellpath Report

Chumley Unit 2H AWP Proj: 13650.03'

Page 5 of 15



REFERENCE WELLPATH IDENTIFICATION				
Operator	ANTERO RESOURCES CORPORATION		Slot	Slot #02
Area	Doddridge Co., WV		Well	Chumley Unit 2H
Field	Doddridge		Wellbore	Chumley Unit 2H AWB
Facility	Susie Jane Pad			

WELLPATH DATA (367 stations)															
MD [ft]	Inclination [°]	Azimuth [°]	TVD [ft]	Vert Sect [ft]	North [ft]	East [ft]	Grid East [US ft]	Grid North [US ft]	Latitude	Longitude	Closure Dist [ft]	Closure Dir [°]	DLS [°/100ft]	Build Rate [°/100ft]	Turn Rate [°/100ft]
2312.00	0.130	24.060	2311.97	-3.29	0.68	-8.60	1744525.29	14254559.02	39°15'13.702"N	80°37'56.039"W	8.63	274.534	0.80	-0.80	-14.84
2337.00	0.150	60.020	2336.97	-3.32	0.72	-8.56	1744525.33	14254559.06	39°15'13.703"N	80°37'56.038"W	8.59	274.836	0.35	0.08	143.84
2362.00	0.160	348.540	2361.97	-3.36	0.78	-8.54	1744525.35	14254559.11	39°15'13.703"N	80°37'56.038"W	8.58	275.185	0.73	0.04	-285.92
2387.00	0.230	332.250	2386.97	-3.45	0.85	-8.57	1744525.32	14254559.19	39°15'13.704"N	80°37'56.038"W	8.61	275.688	0.35	0.28	-65.16
2412.00	0.150	55.560	2411.97	-3.50	0.92	-8.57	1744525.33	14254559.26	39°15'13.705"N	80°37'56.038"W	8.62	276.106	1.04	-0.32	333.24
2437.00	0.100	13.680	2436.97	-3.53	0.96	-8.54	1744525.36	14254559.30	39°15'13.705"N	80°37'56.038"W	8.59	276.392	0.40	-0.20	-167.52
2462.00	0.120	37.500	2461.97	-3.57	1.00	-8.51	1744525.38	14254559.34	39°15'13.706"N	80°37'56.037"W	8.57	276.687	0.20	0.08	95.28
2487.00	0.290	105.330	2486.97	-3.55	1.00	-8.44	1744525.46	14254559.34	39°15'13.706"N	80°37'56.036"W	8.50	276.774	1.08	0.68	271.32
2512.01	0.330	99.050	2511.98	-3.48	0.97	-8.31	1744525.59	14254559.31	39°15'13.705"N	80°37'56.035"W	8.36	276.690	0.21	0.16	-25.11
2537.01	0.160	352.420	2536.98	-3.48	1.00	-8.24	1744525.65	14254559.34	39°15'13.706"N	80°37'56.034"W	8.30	276.903	1.62	-0.68	-426.52
2562.01	0.160	54.790	2561.98	-3.52	1.05	-8.21	1744525.68	14254559.39	39°15'13.706"N	80°37'56.034"W	8.28	277.299	0.66	0.00	249.48
2587.01	0.120	21.080	2586.98	-3.56	1.10	-8.18	1744525.72	14254559.44	39°15'13.707"N	80°37'56.033"W	8.25	277.640	0.36	-0.16	-134.84
2612.01	0.160	32.240	2611.98	-3.60	1.15	-8.15	1744525.74	14254559.49	39°15'13.707"N	80°37'56.033"W	8.23	278.038	0.19	0.16	44.64
2637.01	0.250	46.710	2636.98	-3.64	1.22	-8.09	1744525.80	14254559.56	39°15'13.708"N	80°37'56.032"W	8.18	278.559	0.41	0.36	57.88
2662.01	0.150	34.330	2661.98	-3.69	1.28	-8.03	1744525.86	14254559.62	39°15'13.708"N	80°37'56.031"W	8.13	279.069	0.43	-0.40	-49.52
2687.01	0.050	204.500	2686.98	-3.70	1.30	-8.02	1744525.87	14254559.64	39°15'13.709"N	80°37'56.031"W	8.12	279.203	0.80	-0.40	680.68
2712.01	0.050	262.030	2711.98	-3.69	1.29	-8.03	1744525.86	14254559.63	39°15'13.708"N	80°37'56.031"W	8.14	279.106	0.19	0.00	230.12
2737.01	0.150	186.970	2736.98	-3.67	1.25	-8.05	1744525.84	14254559.59	39°15'13.708"N	80°37'56.032"W	8.15	278.854	0.58	0.40	-300.24
2762.01	0.210	213.120	2761.98	-3.61	1.18	-8.08	1744525.82	14254559.52	39°15'13.707"N	80°37'56.032"W	8.16	278.331	0.40	0.24	104.60
2787.01	0.230	237.440	2786.98	-3.57	1.12	-8.14	1744525.75	14254559.46	39°15'13.707"N	80°37'56.033"W	8.22	277.812	0.38	0.08	97.28
2812.01	0.230	240.550	2811.98	-3.54	1.07	-8.23	1744525.66	14254559.41	39°15'13.706"N	80°37'56.034"W	8.30	277.378	0.05	0.00	12.44
2837.01	0.250	259.220	2836.98	-3.54	1.03	-8.33	1744525.57	14254559.37	39°15'13.706"N	80°37'56.035"W	8.39	277.057	0.32	0.08	74.68
2862.01	0.250	245.920	2861.98	-3.54	1.00	-8.43	1744525.46	14254559.34	39°15'13.706"N	80°37'56.036"W	8.49	276.754	0.23	0.00	-53.20
2887.01	0.380	253.260	2886.98	-3.54	0.95	-8.56	1744525.33	14254559.29	39°15'13.705"N	80°37'56.038"W	8.61	276.348	0.54	0.52	29.36
2912.01	0.470	258.160	2911.98	-3.55	0.91	-8.74	1744525.15	14254559.25	39°15'13.705"N	80°37'56.040"W	8.79	275.927	0.39	0.36	19.60
2937.01	0.430	255.690	2936.98	-3.57	0.86	-8.93	1744524.96	14254559.20	39°15'13.704"N	80°37'56.043"W	8.97	275.520	0.18	-0.16	-9.88
2962.01	0.410	249.630	2961.98	-3.57	0.81	-9.11	1744524.79	14254559.15	39°15'13.704"N	80°37'56.045"W	9.14	275.076	0.19	-0.08	-24.24
2987.01	0.420	258.310	2986.98	-3.57	0.76	-9.28	1744524.61	14254559.10	39°15'13.703"N	80°37'56.047"W	9.31	274.677	0.25	0.04	34.72
3012.01	0.440	256.630	3011.98	-3.59	0.72	-9.46	1744524.43	14254559.06	39°15'13.703"N	80°37'56.050"W	9.49	274.342	0.09	0.08	-6.72
3037.01	0.440	260.850	3036.98	-3.61	0.68	-9.65	1744524.24	14254559.02	39°15'13.702"N	80°37'56.052"W	9.68	274.034	0.12	0.00	16.08



Actual Wellpath Report

Chumley Unit 2H AWP Proj: 13650.03



REFERENCE WELLPATH IDENTIFICATION			
Operator	ANTERO RESOURCES CORPORATION	Slot	Slot #02
Area	Doddridge Co., WV	Well	Chumley Unit 2H
Field	Doddridge	Wellbore	Chumley Unit 2H AWP
Facility	Susie Jane Pad		

WELLPATH DATA (367 stations)														
MD	Inclination	Azimuth	TVD	Vert Sect	North	East	Gnd East	Gnd North	Latitude	Longitude	Closure Dist	Closure Dir	DLS	Build Rate
(m)	(°)	(°)	(m)	(m)	(m)	(m)	(US M)	(US M)	(° N)	(° W)	(m)	(°)	(m)	(%/100ft)
3062.01	0.400	264.520	3061.98	-3.65	0.66	-9.83	1744524.08	14254559.00	39°15'13.702"N	80°37'56.054"W	9.85	273.821	0.20	-0.16
3087.01	0.460	271.860	3086.97	-3.70	0.65	-10.02	1744523.87	14254558.99	39°15'13.702"N	80°37'56.057"W	10.04	273.721	0.33	0.24
312.01	0.360	277.880	3111.97	-3.77	0.66	-10.20	1744523.70	14254559.00	39°15'13.702"N	80°37'56.059"W	10.22	273.731	0.43	-0.40
3137.01	0.260	272.860	3136.97	-3.82	0.68	-10.33	1744523.56	14254559.02	39°15'13.702"N	80°37'56.061"W	10.35	273.754	0.41	-0.40
3162.01	0.300	278.040	3161.97	-3.87	0.69	-10.45	1744523.44	14254559.03	39°15'13.703"N	80°37'56.062"W	10.48	273.776	0.19	0.16
3187.01	0.290	274.580	3186.97	-3.92	0.70	-10.58	1744523.31	14254559.04	39°15'13.703"N	80°37'56.064"W	10.61	273.807	0.08	-0.04
3212.01	0.260	255.090	3211.97	-3.95	0.69	-10.70	1744523.19	14254559.03	39°15'13.703"N	80°37'56.065"W	10.72	273.714	0.39	-0.12
3237.01	0.240	265.030	3236.97	-3.96	0.68	-10.81	1744523.09	14254559.02	39°15'13.702"N	80°37'56.067"W	10.83	273.576	0.19	-0.08
3262.01	0.210	245.640	3261.97	-3.97	0.65	-10.90	1744522.99	14254558.99	39°15'13.702"N	80°37'56.068"W	10.92	273.423	0.33	-0.12
3287.01	0.210	250.440	3286.97	-3.96	0.62	-10.99	1744522.91	14254558.96	39°15'13.702"N	80°37'56.069"W	11.00	273.218	0.07	0.00
3312.01	0.310	270.510	3311.97	-3.98	0.60	-11.10	1744522.80	14254558.94	39°15'13.702"N	80°37'56.070"W	11.11	273.111	0.54	0.40
3337.01	0.300	259.880	3336.97	-4.01	0.59	-11.23	1744522.67	14254558.93	39°15'13.702"N	80°37'56.072"W	11.24	273.019	0.23	-0.04
3362.01	0.290	268.110	3361.97	-4.04	0.58	-11.36	1744522.54	14254558.92	39°15'13.702"N	80°37'56.074"W	11.37	272.916	0.17	-0.04
3387.01	0.200	256.520	3386.97	-4.06	0.57	-11.46	1744522.43	14254558.91	39°15'13.701"N	80°37'56.075"W	11.48	272.828	0.41	-0.36
3417.01	0.340	269.960	3416.97	-4.07	0.54	-11.58	1744522.32	14254558.88	39°15'13.701"N	80°37'56.076"W	11.59	272.691	0.57	0.56
3437.01	0.340	269.960	3436.97	-4.11	0.53	-11.72	1744522.17	14254558.87	39°15'13.701"N	80°37'56.078"W	11.74	272.599	0.22	0.00
3462.01	0.380	274.550	3461.97	-4.16	0.54	-11.88	1744522.01	14254558.88	39°15'13.701"N	80°37'56.080"W	11.89	272.596	0.20	0.16
3487.01	0.340	273.270	3486.97	-4.22	0.55	-12.04	1744521.86	14254558.89	39°15'13.701"N	80°37'56.082"W	12.05	272.613	0.16	-0.16
3512.01	0.310	275.510	3511.97	-4.27	0.56	-12.18	1744521.72	14254558.90	39°15'13.701"N	80°37'56.084"W	12.19	272.633	0.13	-0.12
3537.01	0.260	282.170	3536.97	-4.33	0.58	-12.30	1744521.59	14254558.92	39°15'13.702"N	80°37'56.086"W	12.32	272.693	0.24	-0.20
3562.01	0.400	269.370	3561.97	-4.38	0.59	-12.45	1744521.45	14254558.93	39°15'13.702"N	80°37'56.087"W	12.46	272.713	0.63	0.56
3587.01	0.430	276.300	3586.97	-4.45	0.60	-12.63	1744521.27	14254558.94	39°15'13.702"N	80°37'56.090"W	12.64	272.716	0.23	0.12
3612.01	0.310	264.560	3611.97	-4.50	0.60	-12.79	1744521.11	14254558.94	39°15'13.702"N	80°37'56.092"W	12.80	272.699	0.57	-0.48
3637.01	0.390	269.560	3636.97	-4.54	0.60	-12.94	1744520.96	14254558.94	39°15'13.702"N	80°37'56.094"W	12.95	272.636	0.34	0.32
3662.01	0.440	264.750	3661.97	-4.59	0.59	-13.12	1744520.78	14254558.93	39°15'13.702"N	80°37'56.096"W	13.13	272.559	0.24	0.20
3687.01	0.420	277.710	3686.96	-4.65	0.59	-13.31	1744520.59	14254558.93	39°15'13.702"N	80°37'56.098"W	13.32	272.538	0.40	-0.08
3712.01	0.390	277.320	3711.96	-4.72	0.61	-13.48	1744520.41	14254558.95	39°15'13.702"N	80°37'56.101"W	13.49	272.603	0.12	-0.12
3737.01	0.470	281.020	3736.96	-4.81	0.64	-13.67	1744520.23	14254558.98	39°15'13.702"N	80°37'56.103"W	13.68	272.696	0.34	0.32
3762.01	0.410	286.270	3761.96	-4.91	0.69	-13.85	1744520.04	14254559.03	39°15'13.703"N	80°37'56.105"W	13.87	272.844	0.29	-0.24
3787.01	0.460	283.020	3786.96	-5.01	0.74	-14.04	1744519.86	14254559.08	39°15'13.703"N	80°37'56.108"W	14.06	273.001	0.22	0.26



Actual Wellpath Report

Chumley Unit 2H AWP Proj: 13650.03



REFERENCE WELLPATH IDENTIFICATION			
Operator	ANTERO RESOURCES CORPORATION	Slot	Slot #02
Area	Doddridge Co., WV	Well	Chumley Unit 2H
Field	Doddridge	Wellbore	Chumley Unit 2H AWB
Facility	Susie Jane Pad		

WELLPATH DATA (367 stations)															
MD	Inclination	Azimuth	TVD	Vert Sect	North	East	Grid East	Grid North	Latitude	Longitude	Closure Dist	Closure Dir	DLS	Build Rate	Turn Rate
[m]	[°]	[°]	[m]	[m]	[m]	[m]	[m]	[m]	[m]	[m]	[m]	[°]	[m]	[1/100ft]	[1/100ft]
3812.01	0.410	283.730	3811.96	-5.11	0.78	-14.22	1744519.67	14254559.12	39°15'13.704"N	80°37'56.110"W	14.24	273.138	0.20	-0.20	2.84
3837.01	0.470	287.190	3836.96	-5.22	0.83	-14.41	1744519.49	14254559.17	39°15'13.704"N	80°37'56.112"W	14.43	273.302	0.26	0.24	13.84
3862.01	0.440	286.630	3861.96	-5.33	0.89	-14.60	1744519.30	14254559.23	39°15'13.705"N	80°37'56.115"W	14.62	273.485	0.12	-0.12	-2.24
3887.01	0.510	288.510	3886.96	-5.45	0.95	-14.79	1744519.10	14254559.29	39°15'13.705"N	80°37'56.117"W	14.82	273.681	0.29	0.28	7.52
3912.01	0.470	285.620	3911.96	-5.57	1.01	-15.00	1744518.90	14254559.35	39°15'13.706"N	80°37'56.120"W	15.03	273.870	0.19	-0.16	-11.56
3937.01	0.390	285.520	3936.96	-5.68	1.07	-15.18	1744518.72	14254559.40	39°15'13.706"N	80°37'56.122"W	15.22	274.014	0.32	-0.32	-0.40
3962.01	0.380	277.390	3961.96	-5.76	1.10	-15.34	1744518.55	14254559.44	39°15'13.707"N	80°37'56.124"W	15.38	274.095	0.22	-0.04	-32.52
3987.01	0.380	283.310	3986.96	-5.84	1.13	-15.51	1744518.39	14254559.47	39°15'13.707"N	80°37'56.126"W	15.55	274.162	0.16	0.00	23.68
4012.01	0.360	276.260	4011.96	-5.91	1.16	-15.66	1744518.23	14254559.50	39°15'13.707"N	80°37'56.128"W	15.71	274.220	0.20	-0.08	-28.20
4037.01	0.470	270.790	4036.96	-5.98	1.17	-15.84	1744518.05	14254559.51	39°15'13.708"N	80°37'56.131"W	15.89	274.208	0.47	0.44	-21.88
4062.01	0.450	272.650	4061.95	-6.04	1.17	-16.05	1744517.85	14254559.51	39°15'13.708"N	80°37'56.133"W	16.09	274.177	0.10	-0.08	7.44
4087.01	0.490	275.200	4086.95	-6.12	1.19	-16.25	1744517.65	14254559.53	39°15'13.708"N	80°37'56.136"W	16.29	274.174	0.18	0.16	10.20
4112.01	0.430	279.340	4111.95	-6.21	1.21	-16.45	1744517.45	14254559.55	39°15'13.708"N	80°37'56.138"W	16.49	274.210	0.27	-0.24	16.56
4137.01	0.480	281.450	4136.95	-6.30	1.25	-16.64	1744517.25	14254559.59	39°15'13.708"N	80°37'56.141"W	16.69	274.284	0.21	0.20	8.44
4162.01	0.350	286.420	4161.95	-6.39	1.29	-16.82	1744517.08	14254559.63	39°15'13.709"N	80°37'56.143"W	16.87	274.383	0.54	-0.52	19.88
4187.01	0.230	277.950	4186.95	-6.46	1.32	-16.94	1744516.95	14254559.66	39°15'13.709"N	80°37'56.145"W	16.99	274.448	0.51	-0.48	-33.88
4212.01	0.430	277.290	4211.95	-6.52	1.34	-17.09	1744516.81	14254559.68	39°15'13.709"N	80°37'56.148"W	17.14	274.473	0.80	0.80	-2.64
4237.01	0.320	278.290	4236.95	-6.59	1.36	-17.25	1744516.65	14254559.70	39°15'13.709"N	80°37'56.148"W	17.30	274.504	0.44	-0.44	4.00
4262.01	0.320	263.500	4261.95	-6.64	1.36	-17.39	1744516.51	14254559.70	39°15'13.709"N	80°37'56.150"W	17.44	274.475	0.33	0.00	-59.16
4287.01	0.320	272.660	4286.95	-6.67	1.36	-17.53	1744516.37	14254559.70	39°15'13.709"N	80°37'56.152"W	17.58	274.424	0.20	0.00	36.20
4312.01	0.360	269.550	4311.95	-6.72	1.36	-17.67	1744516.22	14254559.70	39°15'13.709"N	80°37'56.154"W	17.73	274.395	0.18	0.16	-12.00
4337.01	0.280	268.380	4336.95	-6.78	1.38	-17.81	1744516.09	14254559.72	39°15'13.710"N	80°37'56.156"W	17.86	274.422	0.52	-0.32	75.32
4362.01	0.200	242.860	4361.95	-6.81	1.38	-17.91	1744515.99	14254559.72	39°15'13.710"N	80°37'56.157"W	17.96	274.396	0.80	-0.32	-182.08
4387.01	0.260	313.100	4386.95	-6.85	1.40	-17.99	1744515.91	14254559.73	39°15'13.710"N	80°37'56.158"W	18.04	274.436	1.08	0.24	280.96
4412.01	0.060	238.640	4411.95	-6.90	1.43	-18.04	1744515.86	14254559.77	39°15'13.710"N	80°37'56.158"W	18.10	274.524	1.00	-0.80	-297.84
4437.01	0.110	222.390	4436.95	-6.88	1.40	-18.07	1744515.83	14254559.74	39°15'13.710"N	80°37'56.159"W	18.12	274.440	0.22	0.20	-65.00
4462.01	0.170	203.550	4461.95	-6.85	1.35	-18.10	1744515.80	14254559.69	39°15'13.709"N	80°37'56.159"W	18.15	274.269	0.30	0.24	-75.36
4487.01	0.070	350.470	4486.95	-6.83	1.33	-18.12	1744515.78	14254559.67	39°15'13.709"N	80°37'56.159"W	18.16	274.206	0.93	-0.40	587.68
4512.01	0.020	278.880	4511.95	-6.85	1.35	-18.12	1744515.78	14254559.69	39°15'13.709"N	80°37'56.160"W	18.17	274.264	0.27	-0.20	-286.32
4537.01	0.160	191.690	4536.95	-6.82	1.31	-18.13	1744515.76	14254559.65	39°15'13.709"N	80°37'56.160"W	18.18	274.146	0.64	0.56	-348.80



Actual Wellpath Report

Chumley Unit 2H AWP Proj: 13650.03'
Page 8 of 15



REFERENCE WELLPATH IDENTIFICATION			
Operator	ANTERO RESOURCES CORPORATION	Slot	Slot #02
Area	Doddridge Co., WV	Well	Chumley Unit 2H
Field	Doddridge	Wellbore	Chumley Unit 2H AWB
Facility	Susie Jane Pad		

WELLPATH DATA (367 stations)																
MD [ft]	Inclination [°]	Azimuth [°]	TVD [ft]	Vert Sect [ft]	North [ft]	East [ft]	Grid East [US ft]	Grid North [US ft]	Latitude	Longitude	Closure Dist [ft]	Closure Dir [°]	DLS [°/100ft]	Build Rate [°/100ft]	Turn Rate [°/100ft]	
4562.01	0.220	113.860	4561.95	-6.76	1.26	-18.10	1744515.80	14254559.80	39°15'13.709"N	80°37'56.159"W	18.14	273.985	0.97	0.24	-311.32	
4587.01	0.150	174.100	4586.95	-6.69	1.21	-18.05	1744516.85	14254559.55	39°15'13.708"N	80°37'56.159"W	18.09	273.831	0.78	-0.28	240.96	
4612.01	0.170	96.820	4611.95	-6.65	1.17	-18.01	1744515.89	14254559.51	39°15'13.708"N	80°37'56.158"W	18.05	273.723	0.80	0.08	-309.12	
4631.05	0.200	51.790	4630.99	-6.65	1.19	-17.95	1744515.94	14254559.53	39°15'13.708"N	80°37'56.157"W	17.99	273.789	0.76	0.16	-236.50	
4656.01	0.310	76.490	4655.95	-6.66	1.23	-17.86	1744516.04	14254559.57	39°15'13.709"N	80°37'56.156"W	17.90	273.946	0.61	0.44	98.96	
4681.01	0.510	71.640	4680.95	-6.65	1.28	-17.88	1744516.21	14254559.62	39°15'13.709"N	80°37'56.154"W	17.73	274.148	0.81	0.80	-19.40	
4706.01	0.940	69.550	4705.94	-6.66	1.39	-17.39	1744516.51	14254559.73	39°15'13.710"N	80°37'56.150"W	17.44	274.569	1.72	1.72	-8.36	
4731.01	1.710	67.700	4730.94	-6.70	1.60	-16.85	1744517.05	14254559.94	39°15'13.712"N	80°37'56.143"W	16.92	275.433	3.08	3.08	-7.40	
4756.01	2.810	65.700	4755.92	-6.80	2.00	-15.95	1744517.95	14254560.34	39°15'13.716"N	80°37'56.132"W	16.07	277.136	4.41	4.40	-8.00	
4781.01	3.460	67.150	4780.88	-6.93	2.54	-14.69	1744519.20	14254560.88	39°15'13.721"N	80°37'56.116"W	14.91	279.814	2.62	2.60	5.80	
4806.01	4.350	66.460	4805.82	-7.09	3.21	-13.13	1744520.77	14254561.55	39°15'13.728"N	80°37'56.096"W	13.51	283.753	3.56	3.56	-2.76	
4831.01	5.440	67.390	4830.73	-7.28	4.05	-11.16	1744522.73	14254562.39	39°15'13.736"N	80°37'56.071"W	11.87	289.927	4.37	4.36	3.72	
4856.01	6.200	67.690	4855.60	-7.48	5.02	-8.82	1744525.07	14254563.35	39°15'13.745"N	80°37'56.041"W	10.15	299.622	3.04	3.04	1.20	
4881.01	6.950	68.440	4880.44	-7.68	6.08	-6.17	1744527.73	14254564.42	39°15'13.756"N	80°37'56.007"W	8.66	314.619	3.02	3.00	3.00	
4906.01	7.570	69.230	4905.24	-7.86	7.22	-3.22	1744530.67	14254565.56	39°15'13.767"N	80°37'55.970"W	7.91	335.983	2.51	2.48	3.16	
4931.01	8.300	69.740	4930.00	-8.02	8.43	0.01	1744533.90	14254566.77	39°15'13.779"N	80°37'55.929"W	8.43	0.095	2.93	2.92	2.04	
4956.01	8.940	71.030	4954.71	-8.13	9.69	3.54	1744537.43	14254568.02	39°15'13.791"N	80°37'55.884"W	10.32	20.091	2.67	2.56	5.16	
4981.01	9.300	71.360	4979.40	-8.19	10.97	7.29	1744541.18	14254569.30	39°15'13.803"N	80°37'55.836"W	13.17	33.634	1.46	1.44	1.32	
5006.01	9.380	71.560	5004.07	-8.24	12.26	11.14	1744545.03	14254570.59	39°15'13.816"N	80°37'55.787"W	16.56	42.274	0.35	0.32	0.80	
5031.01	9.860	72.250	5028.71	-8.25	13.55	15.11	1744549.00	14254571.89	39°15'13.829"N	80°37'55.736"W	20.30	48.115	1.97	1.92	2.76	
5056.01	10.440	72.560	5053.32	-8.23	14.88	19.31	1744553.20	14254573.22	39°15'13.842"N	80°37'55.683"W	24.38	52.379	2.33	2.32	1.24	
5081.01	11.010	72.580	5077.89	-8.19	16.28	23.75	1744557.63	14254574.61	39°15'13.855"N	80°37'55.626"W	28.79	55.576	2.28	2.28	0.08	
5106.01	11.350	72.680	5102.41	-8.15	17.72	28.38	1744562.26	14254576.06	39°15'13.869"N	80°37'55.568"W	33.46	58.011	1.36	1.36	0.40	
5131.01	11.870	72.320	5126.90	-8.12	19.24	33.18	1744567.05	14254577.57	39°15'13.884"N	80°37'55.507"W	38.35	59.891	2.10	2.08	-1.44	
5156.01	12.430	71.750	5151.34	-8.12	20.86	38.18	1744572.06	14254579.19	39°15'13.900"N	80°37'55.443"W	43.51	61.348	2.29	2.24	-2.28	
5181.01	12.720	71.190	5175.74	-8.19	22.59	43.34	1744577.21	14254580.92	39°15'13.917"N	80°37'55.377"W	48.88	62.469	1.26	1.16	-2.24	
5206.01	13.290	70.760	5200.10	-8.30	24.43	48.66	1744582.53	14254582.76	39°15'13.935"N	80°37'55.309"W	54.45	63.345	2.31	2.28	-1.72	
5231.01	13.610	70.870	5224.41	-8.43	26.34	54.15	1744588.02	14254584.67	39°15'13.953"N	80°37'55.240"W	60.22	64.064	1.28	1.28	0.44	
5256.01	14.510	71.510	5248.66	-8.52	28.29	59.90	1744593.77	14254586.62	39°15'13.973"N	80°37'55.166"W	66.25	64.717	3.65	3.60	2.56	
5281.01	14.910	72.020	5272.85	-8.56	30.28	65.93	1744599.79	14254588.61	39°15'13.992"N	80°37'55.090"W	72.55	65.332	1.68	1.60	2.04	



Actual Wellpath Report

Chumley Unit 2H AWP Proj: 13650.03



REFERENCE WELLPATH IDENTIFICATION		Slot #02	
Operator	ANTERO RESOURCES CORPORATION	Well	Chumley Unit 2H
Area	Doddridge Co., WV	Wellbore	Chumley Unit 2H AWP
Field	Doddridge		
Facility	Susie Jane Pad		

WELLPATH DATA (367 stations)												
MD	Inclination	Azimuth	TVD	Vert Sect	North	East	Grid East	Grid North	Latitude	Longitude	Closure Dist	Closure Dir
(ft)	(°)	(°)	(ft)	(ft)	(ft)	(ft)	(ft)	(ft)	(ft)	(ft)	(ft)	(ft)
5306.01	15.360	72.340	5296.98	-8.55	32.28	72.14	1744606.01	14254590.60	39°15'14.01"N	80°37'55.01"W	79.04	65.896
5331.01	16.250	71.530	5321.03	-8.58	34.39	78.62	1744612.48	14254592.72	39°15'14.03"N	80°37'54.92"W	85.81	66.374
5356.01	17.020	70.680	5344.99	-8.70	36.71	85.39	1744619.24	14254595.03	39°15'14.05"N	80°37'54.84"W	92.94	66.737
5381.01	17.690	70.270	5368.85	-8.92	39.20	92.42	1744626.27	14254597.53	39°15'14.07"N	80°37'54.75"W	100.39	67.014
5406.01	18.220	70.100	5392.63	-9.18	41.81	99.67	1744633.52	14254600.14	39°15'14.10"N	80°37'54.66"W	108.08	67.240
5431.01	19.140	69.920	5416.31	-9.47	44.55	107.19	1744641.04	14254602.87	39°15'14.13"N	80°37'54.56"W	116.08	67.431
5456.01	19.790	69.770	5439.88	-9.80	47.42	115.01	1744648.86	14254605.74	39°15'14.15"N	80°37'54.46"W	124.40	67.592
5481.01	20.340	69.680	5463.37	-10.16	50.39	123.06	1744656.90	14254608.71	39°15'14.18"N	80°37'54.36"W	132.98	67.730
5506.01	21.450	69.540	5486.72	-10.54	53.50	131.41	1744665.25	14254611.82	39°15'14.21"N	80°37'54.26"W	141.89	67.848
5531.01	22.700	68.980	5509.89	-11.01	56.83	140.20	1744674.04	14254615.15	39°15'14.25"N	80°37'54.14"W	151.28	67.935
5556.01	23.760	68.410	5532.86	-11.60	60.41	149.39	1744683.22	14254618.73	39°15'14.28"N	80°37'54.02"W	161.14	67.981
5581.01	25.180	67.570	5555.62	-12.35	64.30	158.99	1744692.81	14254622.61	39°15'14.32"N	80°37'53.90"W	171.50	67.991
5606.01	25.850	67.290	5578.18	-13.23	68.43	168.93	1744702.75	14254626.74	39°15'14.36"N	80°37'53.78"W	182.26	67.948
5631.01	26.350	67.330	5600.63	-14.15	72.67	179.08	1744712.90	14254630.98	39°15'14.40"N	80°37'53.64"W	193.26	67.912
5656.01	26.740	67.100	5622.98	-15.10	77.00	189.38	1744723.19	14254635.31	39°15'14.44"N	80°37'53.51"W	204.43	67.874
5681.01	26.520	66.840	5645.34	-16.10	81.38	199.69	1744733.50	14254639.69	39°15'14.49"N	80°37'53.38"W	215.64	67.827
5706.01	26.840	66.750	5667.68	-17.14	85.80	210.01	1744743.82	14254644.11	39°15'14.53"N	80°37'53.25"W	226.86	67.776
5731.01	27.220	66.870	5689.95	-18.19	90.28	220.45	1744754.26	14254648.58	39°15'14.57"N	80°37'53.12"W	238.22	67.730
5756.01	27.490	66.910	5712.15	-19.24	94.79	231.02	1744764.82	14254653.09	39°15'14.62"N	80°37'52.98"W	249.71	67.692
5781.01	27.510	67.210	5734.33	-20.25	99.29	241.65	1744775.44	14254657.59	39°15'14.67"N	80°37'52.82"W	261.25	67.664
5806.01	27.580	67.900	5756.49	-21.17	103.70	252.33	1744786.12	14254662.00	39°15'14.71"N	80°37'52.71"W	272.81	67.659
5831.01	27.880	68.170	5778.62	-22.00	108.05	263.12	1744796.91	14254666.35	39°15'14.75"N	80°37'52.57"W	284.44	67.675
5856.01	28.010	68.330	5800.71	-22.79	112.39	274.00	1744807.79	14254670.69	39°15'14.79"N	80°37'52.44"W	296.16	67.697
5881.01	28.080	68.150	5822.77	-23.58	116.75	284.92	1744818.70	14254675.04	39°15'14.83"N	80°37'52.30"W	307.91	67.718
5906.01	28.290	67.810	5844.81	-24.43	121.18	295.87	1744829.64	14254679.47	39°15'14.88"N	80°37'52.16"W	319.72	67.728
5931.01	28.470	67.500	5866.80	-25.35	125.69	306.86	1744840.63	14254683.98	39°15'14.92"N	80°37'52.02"W	331.60	67.725
5956.01	28.160	66.960	5888.81	-26.36	130.28	317.79	1744851.56	14254688.57	39°15'14.97"N	80°37'51.88"W	343.46	67.708
5981.01	28.460	65.750	5910.82	-27.55	135.04	328.65	1744862.41	14254693.33	39°15'15.01"N	80°37'51.74"W	355.31	67.683
6006.01	28.070	64.400	5932.84	-29.00	140.03	339.39	1744873.14	14254698.31	39°15'15.06"N	80°37'51.60"W	367.14	67.580
6031.01	27.830	62.970	5954.93	-30.72	145.22	349.89	1744883.64	14254703.50	39°15'15.11"N	80°37'51.47"W	378.83	67.459



Actual Wellpath Report

Chumley Unit 2H AWP Proj: 13650.03



REFERENCE WELLPATH IDENTIFICATION			
Operator	ANTERO RESOURCES CORPORATION	Slot	Slot #02
Area	Doddridge Co., WV	Well	Chumley Unit 2H
Field	Doddridge	Wellbore	Chumley Unit 2H AWB
Facility	Susie Jane Pad		

WELLPATH DATA (367 stations)															
MD	Inclination	Azimuth	TVD	Vent Sect	North	East	Gnd East	Gnd North	Latitude	Longitude	Closure Dist	Closure Dir	DLS	Build Rate	Turn Rate
(ft)	(°)	(°)	(ft)	(ft)	(ft)	(ft)	(ft)	(ft)	(ft)	(ft)	(ft)	(°)	(ft/100ft)	(ft/100ft)	(ft/100ft)
6056.01	27.500	597.07	-32.69	150.61	350.17	1744893.92	14254708.89	14254714.48	39°15'15.224"N	80°37'51.216"W	390.39	67.307	2.72	-1.32	-5.12
6081.01	26.920	59.700	-34.95	156.20	370.14	1744903.88	14254744.48	14254744.48	39°15'15.224"N	80°37'51.216"W	401.75	67.120	4.32	-2.32	-7.96
6106.01	26.470	58.050	-37.52	162.01	379.75	1744913.49	14254720.28	14254720.28	39°15'15.281"N	80°37'51.093"W	412.86	66.896	3.47	-1.80	-6.60
6131.01	26.620	56.440	-40.33	167.94	388.98	1744922.72	14254726.22	14254726.22	39°15'15.340"N	80°37'50.976"W	423.69	66.648	4.42	-3.40	-6.44
6156.01	24.560	55.650	-43.26	173.86	397.78	1744931.51	14254732.13	14254732.13	39°15'15.398"N	80°37'50.864"W	434.11	66.391	4.45	-4.24	-3.16
6181.01	23.650	55.510	-46.17	179.63	406.20	1744939.93	14254737.90	14254737.90	39°15'15.454"N	80°37'50.756"W	444.15	66.144	3.65	-3.64	-0.56
6206.01	23.010	55.470	-49.00	185.24	414.36	1744948.09	14254743.51	14254743.51	39°15'15.510"N	80°37'50.652"W	453.88	65.913	2.66	-2.56	-0.16
6231.01	22.990	55.530	-51.79	190.78	422.41	1744956.13	14254749.04	14254749.04	39°15'15.564"N	80°37'50.550"W	463.49	65.694	0.12	-0.08	0.24
6256.01	23.210	55.990	-54.55	196.29	430.52	1744964.24	14254754.56	14254754.56	39°15'15.618"N	80°37'50.446"W	473.16	65.489	1.14	0.88	1.84
6281.01	23.340	57.360	-57.18	201.72	438.77	1744972.49	14254759.98	14254759.98	39°15'15.671"N	80°37'50.341"W	482.82	65.310	2.23	0.52	6.48
6306.01	23.530	58.010	-59.66	207.04	447.17	1744980.89	14254765.29	14254765.29	39°15'15.724"N	80°37'50.234"W	492.78	65.156	1.28	0.76	2.60
6331.01	23.820	58.120	-62.09	212.35	455.69	1744989.41	14254770.60	14254770.60	39°15'15.776"N	80°37'50.126"W	502.74	65.015	1.17	0.44	0.44
6356.01	24.150	57.590	-64.60	217.75	464.30	1744998.01	14254776.01	14254776.01	39°15'15.829"N	80°37'50.016"W	512.82	64.874	1.58	1.32	-2.12
6381.01	24.530	56.680	-67.26	223.34	472.95	1745006.66	14254781.60	14254781.60	39°15'15.884"N	80°37'49.906"W	523.03	64.722	2.14	1.52	-3.64
6406.01	24.790	55.666	-70.14	229.16	481.61	1745015.31	14254787.41	14254787.41	39°15'15.941"N	80°37'49.795"W	533.36	64.563	2.23	1.04	-4.72
6431.01	25.250	54.930	-73.21	235.20	490.29	1745023.99	14254793.44	14254793.44	39°15'16.000"N	80°37'49.685"W	543.78	64.373	2.08	1.84	-2.28
6456.01	25.480	55.730	-76.30	241.29	499.10	1745032.79	14254799.53	14254799.53	39°15'16.060"N	80°37'49.572"W	554.36	64.199	1.65	0.92	3.20
6481.01	24.860	58.240	-79.08	247.08	508.01	1745041.70	14254805.33	14254805.33	39°15'16.117"N	80°37'49.459"W	564.91	64.063	4.94	-2.48	10.04
6506.01	24.490	59.590	-81.46	252.47	516.95	1745050.64	14254810.71	14254810.71	39°15'16.170"N	80°37'49.345"W	575.31	63.970	2.70	-1.48	5.40
6531.01	24.520	60.930	-83.59	257.61	525.95	1745059.64	14254815.85	14254815.85	39°15'16.220"N	80°37'49.230"W	585.65	63.904	2.23	0.12	5.36
6556.01	24.840	62.310	-85.49	262.58	535.13	1745068.82	14254820.81	14254820.81	39°15'16.269"N	80°37'49.113"W	596.08	63.864	2.64	1.28	5.52
6581.01	25.550	64.780	-87.07	267.31	544.66	1745078.34	14254825.55	14254825.55	39°15'16.315"N	80°37'48.992"W	606.72	63.859	5.07	2.84	9.88
6606.01	26.210	66.470	-88.30	271.81	554.60	1745088.28	14254830.05	14254830.05	39°15'16.360"N	80°37'48.865"W	617.63	63.890	3.96	2.64	6.76
6631.01	27.290	67.950	-89.26	276.17	564.98	1745098.65	14254834.40	14254834.40	39°15'16.402"N	80°37'48.733"W	628.86	63.960	5.08	4.32	5.92
6656.01	28.400	68.560	-90.05	280.49	575.82	1745109.49	14254838.73	14254838.73	39°15'16.444"N	80°37'48.595"W	640.51	64.028	4.58	4.44	2.44
6681.01	30.240	69.100	-90.74	284.91	587.24	1745120.90	14254843.14	14254843.14	39°15'16.488"N	80°37'48.450"W	652.71	64.118	7.44	7.36	2.16
6706.01	31.510	68.610	-91.47	289.54	599.20	1745132.86	14254847.77	14254847.77	39°15'16.533"N	80°37'48.297"W	665.49	64.210	5.18	5.08	-1.96
6731.01	32.720	67.990	-92.38	294.48	611.54	1745145.19	14254852.71	14254852.71	39°15'16.581"N	80°37'48.140"W	678.75	64.287	5.14	4.84	-3.28
6756.01	33.660	66.790	-93.53	299.76	624.16	1745157.81	14254857.99	14254857.99	39°15'16.633"N	80°37'47.979"W	692.42	64.347	4.35	3.76	-4.00
6781.01	34.150	65.800	-94.95	305.37	636.93	1745170.57	14254863.59	14254863.59	39°15'16.688"N	80°37'47.817"W	706.35	64.385	2.95	1.96	-3.96



Actual Wellpath Report

Chumley Unit 2H AWP Proj: 13650.03

Page 11 of 15



REFERENCE WELLPATH IDENTIFICATION			
Operator	ANTERO RESOURCES CORPORATION	Slot	Slot #02
Area	Doddridge Co., WV	Well	Chumley Unit 2H
Field	Doddridge	Wellbore	Chumley Unit 2H AWB
Facility	Susie Jane Pad		

WELLPATH DATA (367 stations)															
MD	Inclination	Azimuth	TVD	Vert Sect	North	East	Grid East	Grid North	Latitude	Longitude	Closure Dist	Closure Dir	DLS	Build Rate	Turn Rate
(ft)	(°)	(°)	(ft)	(ft)	(ft)	(ft)	(ft)	(ft)	(ft)	(ft)	(ft)	(ft)	(ft)	(ft/100ft)	(°/100ft)
6808.01	34.440	6648.01	-96.52	311.17	649.77	1745183.41	14254869.39	39°15'16.745"N	80°37'47.653"W	720.44	64.411	1.24	1.16	-0.76	-0.72
6831.01	33.810	6668.71	-98.13	316.98	662.54	1745196.17	14254875.20	39°15'16.802"N	80°37'47.491"W	734.46	64.432	2.55	1.16	-0.72	-0.72
6841.46	33.620	6677.40	-98.81	318.40	667.81	1745201.44	14254877.61	39°15'16.825"N	80°37'47.424"W	740.26	64.439	2.05	1.16	-1.72	-1.72
6869.02	33.640	6740.35	-100.70	325.85	681.64	1745215.26	14254884.06	39°15'16.889"N	80°37'47.247"W	755.52	64.450	1.03	1.16	-1.85	-1.85
6944.01	31.490	6763.54	-106.09	343.27	718.05	1745261.66	14254901.47	39°15'17.059"N	80°37'46.784"W	795.88	64.450	2.90	1.16	-0.84	-0.84
6976.01	31.300	6790.86	-108.24	350.39	733.12	1745266.72	14254908.60	39°15'17.129"N	80°37'46.592"W	812.55	64.455	2.01	1.16	3.66	3.66
7008.01	30.220	6818.36	-109.19	356.31	748.35	1745281.95	14254914.51	39°15'17.187"N	80°37'46.398"W	828.85	64.540	11.83	1.16	22.19	-3.38
7040.01	29.560	6846.12	-108.00	360.00	763.82	1745297.41	14254918.24	39°15'17.223"N	80°37'46.201"W	844.42	64.762	12.83	1.16	25.44	-2.05
7104.01	30.020	6937.50	-99.69	361.53	795.49	1745329.07	14254919.73	39°15'17.237"N	80°37'45.798"W	873.79	65.559	9.88	1.16	19.78	0.69
7137.01	29.830	6945.60	-92.87	359.65	811.83	1745345.40	14254917.85	39°15'17.217"N	80°37'45.591"W	887.92	66.106	8.63	1.16	17.27	-0.58
7169.01	30.370	6957.97	-84.81	356.24	827.49	1745361.06	14254914.44	39°15'17.183"N	80°37'45.392"W	900.91	66.708	8.97	1.16	17.56	1.69
7201.01	32.210	6985.32	-75.11	351.14	843.29	1745376.85	14254909.34	39°15'17.132"N	80°37'45.191"W	913.48	67.394	10.60	1.16	17.16	5.75
7233.01	34.370	7012.07	-63.60	344.26	859.44	1745392.99	14254902.46	39°15'17.063"N	80°37'44.986"W	925.82	68.171	10.75	1.16	15.25	6.75
7265.01	35.730	7038.27	-50.52	335.77	875.73	1745409.28	14254893.88	39°15'16.979"N	80°37'44.780"W	937.80	69.022	8.45	1.16	12.72	4.25
7297.01	36.830	7064.07	-36.15	325.88	891.87	1745425.41	14254884.10	39°15'16.880"N	80°37'44.575"W	949.54	69.928	8.04	1.16	12.28	3.44
7329.01	38.200	7089.46	-20.40	314.41	907.60	1745441.13	14254872.63	39°15'16.766"N	80°37'44.376"W	960.51	70.893	10.88	1.16	16.44	4.28
7361.01	39.570	7114.38	-3.16	301.16	922.67	1745456.20	14254859.38	39°15'16.635"N	80°37'44.185"W	970.58	71.924	11.01	1.16	16.16	4.28
7393.01	42.090	7137.50	15.60	286.15	937.24	1745470.76	14254844.38	39°15'16.466"N	80°37'44.000"W	979.95	73.022	11.17	1.16	12.12	7.88
7425.01	44.860	7161.85	35.77	269.62	951.71	1745485.23	14254827.85	39°15'16.322"N	80°37'43.817"W	989.17	74.183	9.13	1.16	8.03	6.31
7457.01	47.710	7184.00	57.27	251.76	966.34	1745499.85	14254810.00	39°15'16.145"N	80°37'43.632"W	998.59	75.398	10.36	1.16	5.62	9.53
7490.01	51.200	7205.45	80.92	231.80	981.51	1745515.01	14254790.05	39°15'15.947"N	80°37'43.440"W	1008.51	76.712	11.86	1.16	7.06	10.58
7522.02	54.710	7224.74	105.31	210.92	996.23	1745529.73	14254769.18	39°15'15.740"N	80°37'43.254"W	1018.31	78.046	11.83	1.16	5.56	10.97
7554.02	57.900	7242.49	130.96	188.70	1010.88	1745544.38	14254748.97	39°15'15.520"N	80°37'43.069"W	1028.35	79.426	11.00	1.16	5.59	9.97
7586.02	61.310	7258.68	157.80	165.12	1025.22	1745558.71	14254723.40	39°15'15.286"N	80°37'42.888"W	1038.43	80.861	12.52	1.16	7.62	10.66
7618.02	63.820	7273.42	185.63	140.38	1039.15	1745572.64	14254698.66	39°15'15.041"N	80°37'42.712"W	1048.59	82.307	7.63	1.16	4.28	7.84
7650.02	65.930	7287.01	214.14	114.81	1052.77	1745586.25	14254673.10	39°15'14.788"N	80°37'42.541"W	1059.01	83.776	7.63	1.16	4.25	6.59
7682.02	68.930	7299.29	243.37	88.33	1065.88	1745599.36	14254646.64	39°15'14.525"N	80°37'42.375"W	1069.53	85.263	11.02	1.16	6.28	9.38
7715.02	71.800	7310.38	274.26	59.98	1078.59	1745612.06	14254618.29	39°15'14.245"N	80°37'42.215"W	1080.26	86.817	11.07	1.16	7.27	8.70
7747.02	72.790	7320.11	304.69	31.53	1089.53	1745622.99	14254589.86	39°15'13.963"N	80°37'42.078"W	1089.98	88.342	11.79	1.16	11.94	3.09



Actual Wellpath Report

Chumley Unit 2H AWP Proj: 13650.03
Page 12 of 15



REFERENCE WELLPATH IDENTIFICATION			
Operator	ANTERO RESOURCES CORPORATION	Slot	Slot #02
Area	Doddrige Co., WV	Well	Chumley Unit 2H
Field	Doddrige	Wellbore	Chumley Unit 2H AWB
Facility	Sustie Jane Pad		

WELLPATH DATA (367 stations)														
MD	Inclination	Azimuth	TVD	Vert Sect	North	East	Grid East	Grid North	Latitude	Longitude	Closure Dist	Closure Dir	DLS	Turn Rate
(ft)	(°)	(°)	(ft)	(ft)	(ft)	(ft)	(ft)	(ft)	(ft)	(ft)	(ft)	(°)	(ft/100ft)	(°/100ft)
7779.02	73.19	164.50	7329.34	335.32	2.28	1098.64	1745632.11	14254560.62	39°15'13.67"N	80°37'41.96"W	1098.65	89.881	11.24	2.87
7811.02	75.60	165.01	7337.81	366.15	-27.49	1106.76	1745640.22	14254530.86	39°15'13.37"N	80°37'41.86"W	1107.10	91.423	6.10	5.91
7843.02	76.29	164.97	7345.58	397.16	-57.43	1114.95	1745648.41	14254500.93	39°15'13.08"N	80°37'41.75"W	1116.43	92.949	2.90	2.16
7875.02	78.25	163.19	7352.63	428.36	-87.40	1123.67	1745657.13	14254470.97	39°15'12.78"N	80°37'41.65"W	1127.07	94.448	7.10	6.13
7907.02	81.98	162.54	7358.12	459.87	-117.52	1132.96	1745666.41	14254440.87	39°15'12.48"N	80°37'41.53"W	1139.04	95.922	11.83	11.66
7924.02	84.44	162.25	7360.13	476.75	-133.61	1138.07	1745671.51	14254424.78	39°15'12.32"N	80°37'41.41"W	1145.88	96.996	14.57	14.47
7984.02	91.28	161.16	7362.37	536.67	-190.50	1156.88	1745690.32	14254367.91	39°15'11.76"N	80°37'41.23"W	1172.46	99.351	11.54	11.40
8009.02	91.55	161.29	7361.80	559.66	-212.27	1164.28	1745697.71	14254346.15	39°15'11.55"N	80°37'41.14"W	1183.47	100.333	1.30	1.17
8099.02	89.36	161.49	7361.07	651.65	-299.45	1193.63	1745727.06	14254259.00	39°15'10.68"N	80°37'40.72"W	1230.62	104.083	2.39	-2.38
8196.02	88.93	162.53	7362.50	747.63	-390.75	1223.28	1745756.69	14254167.75	39°15'09.78"N	80°37'40.39"W	1284.17	107.715	1.17	-0.45
8291.02	89.73	162.38	7363.63	843.62	-482.27	1252.22	1745785.62	14254076.25	39°15'08.87"N	80°37'40.03"W	1341.88	111.064	0.83	-0.16
8388.02	90.10	162.03	7363.77	940.62	-574.63	1281.86	1745815.25	14253983.93	39°15'07.964"N	80°37'39.664"W	1404.77	114.146	0.53	-0.36
8484.02	90.07	162.70	7363.63	1036.62	-666.12	1310.94	1745844.32	14253892.48	39°15'07.059"N	80°37'39.299"W	1470.47	116.936	0.70	-0.03
8580.02	89.97	161.82	7363.59	1132.62	-757.56	1340.20	1745873.56	14253801.08	39°15'06.154"N	80°37'38.932"W	1539.49	119.478	0.92	-0.92
8677.02	90.44	162.12	7363.25	1229.62	-849.79	1370.22	1745903.57	14253708.88	39°15'05.241"N	80°37'38.566"W	1612.34	121.807	0.57	0.48
8773.02	90.34	161.99	7362.59	1325.62	-941.12	1399.80	1745933.14	14253617.59	39°15'04.337"N	80°37'38.184"W	1686.75	123.914	0.17	-0.14
8869.02	90.24	162.14	7362.11	1421.62	-1032.45	1429.36	1745962.69	14253526.29	39°15'03.433"N	80°37'37.813"W	1763.24	125.841	0.19	-0.10
8966.02	89.30	162.58	7361.96	1518.61	-1124.89	1458.75	1745992.07	14253433.89	39°15'02.518"N	80°37'37.445"W	1842.10	127.837	0.55	-0.32
9062.02	90.07	162.19	7361.96	1614.61	-1216.39	1487.80	1746021.11	14253342.42	39°15'01.613"N	80°37'37.080"W	1921.76	129.269	0.43	-0.41
9159.02	90.48	161.58	7361.50	1711.61	-1308.57	1518.00	1746051.30	14253250.28	39°15'00.700"N	80°37'36.701"W	2004.17	130.762	0.80	-0.68
9254.02	90.98	162.40	7360.29	1806.60	-1398.89	1547.41	1746080.70	14253159.99	39°14'59.807"N	80°37'36.332"W	2086.00	132.114	1.06	0.53
9352.02	89.66	161.69	7359.74	1904.60	-1492.11	1577.62	1746110.90	14253066.81	39°14'58.884"N	80°37'35.953"W	2171.47	133.404	1.53	-1.35
9448.02	89.83	162.47	7360.17	2000.60	-1583.45	1607.16	1746140.42	14252975.50	39°14'57.980"N	80°37'35.582"W	2256.17	134.574	0.83	0.81
9543.02	90.00	160.62	7360.31	2095.59	-1673.57	1637.23	1746170.48	14252885.43	39°14'57.088"N	80°37'35.205"W	2341.23	135.629	1.96	0.18
9640.02	90.30	160.29	7360.05	2192.55	-1764.98	1669.68	1746202.92	14252794.05	39°14'56.183"N	80°37'34.797"W	2429.60	136.589	0.46	-0.34
9737.02	90.67	162.11	7359.23	2289.53	-1856.79	1700.94	1746234.17	14252702.27	39°14'55.275"N	80°37'34.405"W	2518.11	137.508	1.91	0.38
9833.02	91.14	162.76	7357.72	2386.51	-1948.31	1729.91	1746263.12	14252610.79	39°14'54.369"N	80°37'34.041"W	2605.47	138.398	0.84	0.68
9930.02	91.50	162.07	7356.48	2482.48	-2040.75	1759.20	1746292.41	14252518.99	39°14'53.454"N	80°37'33.674"W	2694.34	139.237	0.80	-0.71
10026.02	90.50	161.90	7353.81	2578.47	-2132.03	1788.89	1746322.08	14252427.15	39°14'52.551"N	80°37'33.301"W	2783.10	140.091	1.06	-1.04
10123.02	90.77	160.60	7352.73	2676.45	-2223.87	1820.07	1746353.25	14252335.34	39°14'51.642"N	80°37'32.910"W	2873.71	140.702	1.37	0.29



Actual Wellpath Report

Chumley Unit 2H AWP Proj: 13650.03
Page 13 of 15



REFERENCE WELLPATH IDENTIFICATION			
Operator	ANTERO RESOURCES CORPORATION	Slot	Slot #02
Area	Doddridge Co., WV	Well	Chumley Unit 2H
Field	Doddridge	Wellbore	Chumley Unit 2H AWB
Facility	Susie Jane Pad		

WELLPATH DATA (367 stations)															
MD	Inclination	Azimuth	TVD	Vert Sect	North	East	Grid East	Grid North	Latitude	Longitude	Closure Dist	Closure Dir	DLS	Build Rate	Turn Rate
ft	ft	ft	ft	ft	ft	ft	ft	ft	ft	ft	ft	ft	ft	ft/100ft	ft/100ft
10219.02	90.910	162.190	7351.32	2771.43	-2314.84	1850.69	1746383.86	14252244.40	39°14'50.74"N	80°37'32.52"W	2963.70	141.358	1.66	0.15	1.66
10316.02	91.180	162.630	7349.56	2668.41	-2407.29	1880.00	1746413.16	14252151.99	39°14'49.826"N	80°37'32.157"W	3054.41	142.012	1.22	0.53	0.45
10412.02	90.030	162.420	7348.54	2964.40	-2498.85	1908.82	1746441.97	14252050.46	39°14'48.920"N	80°37'31.795"W	3144.50	142.625	1.22	-1.20	-0.22
10508.02	90.500	162.800	7348.10	3060.39	-2590.46	1937.51	1746470.65	14251968.89	39°14'48.013"N	80°37'31.436"W	3234.88	143.206	0.63	0.49	0.40
10605.02	91.450	163.200	7346.45	3157.37	-2683.21	1965.87	1746498.99	14251876.18	39°14'47.096"N	80°37'31.080"W	3326.30	143.771	1.06	0.96	0.41
10701.02	90.000	162.660	7345.23	3253.35	-2774.97	1994.05	1746527.16	14251784.45	39°14'46.188"N	80°37'30.727"W	3417.12	144.300	1.61	-1.51	-0.56
10797.02	89.870	163.510	7345.34	3349.33	-2866.82	2021.98	1746555.08	14251692.64	39°14'45.279"N	80°37'30.377"W	3508.14	144.805	0.90	-0.14	0.88
10894.02	90.330	162.670	7345.17	3446.32	-2959.52	2050.19	1746583.28	14251599.87	39°14'44.560"N	80°37'30.023"W	3600.37	145.289	0.89	-0.47	-0.87
10989.02	88.990	161.980	7345.74	3541.31	-3050.13	2079.03	1746612.11	14251509.40	39°14'43.464"N	80°37'29.661"W	3691.30	145.721	1.59	-1.41	-0.73
11086.02	88.890	160.880	7347.53	3638.29	-3142.06	2109.92	1746642.99	14251417.50	39°14'42.555"N	80°37'29.274"W	3784.75	146.118	1.14	-0.10	-1.13
11182.02	90.200	161.650	7348.29	3734.27	-3232.97	2140.75	1746673.81	14251326.63	39°14'41.655"N	80°37'28.887"W	3877.49	146.489	1.58	1.36	0.80
11279.02	90.370	161.520	7347.81	3831.27	-3325.00	2171.39	1746704.44	14251234.63	39°14'40.744"N	80°37'28.502"W	3971.22	146.853	0.22	-0.18	-0.13
11375.02	90.740	162.090	7346.88	3927.26	-3416.20	2201.37	1746734.40	14251143.47	39°14'39.841"N	80°37'28.126"W	4064.04	147.203	0.71	0.39	0.59
11471.02	90.970	162.140	7345.45	4023.25	-3507.55	2230.85	1746763.87	14251052.16	39°14'38.937"N	80°37'27.756"W	4156.87	147.543	0.25	0.24	0.05
11568.02	90.500	163.160	7344.20	4120.23	-3600.13	2259.77	1746792.78	14250959.82	39°14'38.021"N	80°37'27.383"W	4250.59	147.884	1.16	-0.48	-1.05
11664.02	90.270	162.230	7343.56	4216.23	-3691.78	2288.33	1746821.32	14250868.00	39°14'37.114"N	80°37'27.035"W	4343.46	148.208	1.00	-0.24	-0.97
11760.02	90.640	162.760	7342.80	4312.22	-3783.33	2317.20	1746850.19	14250776.48	39°14'36.208"N	80°37'26.673"W	4436.55	148.514	0.67	0.39	0.55
11857.02	90.740	162.820	7341.63	4409.21	-3875.98	2345.90	1746878.87	14250683.87	39°14'35.291"N	80°37'26.313"W	4530.61	148.816	0.12	0.10	0.06
11953.02	91.180	162.860	7340.02	4505.19	-3967.69	2374.22	1746907.18	14250592.19	39°14'34.383"N	80°37'25.958"W	4623.80	149.104	0.46	0.46	0.04
12049.02	90.500	161.340	7338.61	4601.17	-4059.03	2403.72	1746936.67	14250500.89	39°14'33.479"N	80°37'25.588"W	4717.37	149.366	1.73	-0.71	-1.58
12146.02	90.670	162.320	7337.62	4698.16	-4151.19	2433.97	1746966.91	14250408.77	39°14'32.567"N	80°37'25.208"W	4812.13	149.616	1.03	0.18	1.01
12242.02	90.570	162.970	7336.58	4794.16	-4242.81	2462.60	1746995.53	14250317.18	39°14'31.661"N	80°37'24.849"W	4905.70	149.868	0.69	-0.10	0.68
12339.02	90.600	162.040	7335.59	4891.15	-4336.32	2491.76	1747024.68	14250224.71	39°14'30.745"N	80°37'24.483"W	5000.39	150.112	0.96	0.03	-0.96
12435.02	90.770	162.040	7334.44	4987.14	-4426.64	2521.36	1747054.27	14250133.43	39°14'29.841"N	80°37'24.112"W	5094.35	150.335	0.18	0.18	0.00
12532.03	81.010	160.170	7332.94	5084.12	-4518.40	2552.77	1747085.66	14250041.70	39°14'28.933"N	80°37'23.748"W	5189.66	150.535	1.94	0.25	-1.93
12628.03	90.100	162.160	7332.01	5180.09	-4609.25	2583.76	1747116.64	14249950.88	39°14'28.034"N	80°37'23.329"W	5284.04	150.727	2.28	-0.95	2.07
12724.03	89.870	161.410	7332.03	5276.09	-4700.44	2613.77	1747146.64	14249859.73	39°14'27.131"N	80°37'22.952"W	5378.28	150.923	0.82	-0.24	-0.78
12820.03	89.830	161.140	7332.28	5372.08	-4791.36	2644.58	1747177.44	14249768.66	39°14'26.231"N	80°37'22.565"W	5472.75	151.104	0.28	-0.04	-0.28
12917.03	90.440	162.470	7332.06	5469.08	-4883.51	2674.87	1747207.72	14249676.73	39°14'25.319"N	80°37'22.185"W	5568.09	151.289	1.51	0.63	1.37
13013.03	90.710	163.570	7331.09	5565.06	-4975.32	2702.91	1747235.74	14249584.96	39°14'24.411"N	80°37'21.834"W	5662.11	151.466	1.18	0.29	1.15



Actual Wellpath Report

Chumley Unit 2H AWP Proj: 13650.03



REFERENCE WELLPATH IDENTIFICATION			
Operator	ANTERO RESOURCES CORPORATION	Slot	Slot #02
Area	Doddridge Co., WV	Well	Chumley Unit 2H
Field	Doddridge	Wellbore	Chumley Unit 2H AWB
Facility	Susie Jane Pad		

WELLPATH DATA (367 stations)															
MD	Inclination	Azimuth	TVD	Vert Sect	North	East	Grd East	Grd North	Latitude	Longitude	Closure Dist	Closure Dir	DLS	Build Rate	Turn Rate
ft	°	°	ft	ft	ft	ft	ft	ft	ft	ft	ft	ft	ft/100ft	ft/100ft	ft/100ft
13109.03	91.270	162.380	7329.43	-5067.09	2731.01	1747263.83	14249493.22	39°14'23.503"N	80°37'21.481"W	5756.20	151.677	1.37	0.58	-1.24	
13208.03	90.810	161.840	7327.67	-5159.39	2760.80	1747293.62	14249400.96	39°14'22.589"N	80°37'21.108"W	5851.61	151.849	0.73	-0.47	-0.56	
13398.03	91.010	162.200	7326.15	-5341.72	2820.94	1747353.73	14249218.70	39°14'20.785"N	80°37'20.353"W	6040.83	152.162	1.30	1.05	0.76	
13494.03	90.810	162.260	7324.62	-5433.13	2850.24	1747383.02	14249127.33	39°14'19.880"N	80°37'19.985"W	6135.36	152.318	0.22	-0.21	0.06	
13592.03	90.670	161.770	7323.36	-5526.33	2880.49	1747413.26	14249034.16	39°14'18.958"N	80°37'19.606"W	6231.98	152.470	0.52	-0.14	-0.50	
13650.03	90.670	161.770	7322.68	-5581.41	2898.64	1747431.40	14248979.10	39°14'18.412"N	80°37'19.378"W	6289.22	152.555	0.00	0.00	0.00	

WELLPATH COMPOSITION - Ref Wellbore: Chumley Unit 2H AWB			
Start MD	End MD	Positional Uncertainty Model	Log Name/Comment
ft	ft		
25.00	6841.46	SDI Keeper v1.04	01 SDI Std. Keeper Gyro (1'2" - 6841.46)
6841.46	13592.03	SDI gMWD v1.05 (Standard)	02 SDI MWD (6841.46)(6869.02 - 13592.03)
13592.03	13650.03	Blind Drilling (std)	Projection to bit
			Chumley Unit 2H AWB
			Wellbore



Actual Wellpath Report

Chumley Unit 2H AWP Proj: 13650.03'

Page 15 of 15



REFERENCE WELLPATH IDENTIFICATION			
Operator	ANTERO RESOURCES CORPORATION	Slot	Slot #02
Area	Doddridge Co., WV	Well	Chumley Unit 2H
Field	Doddridge	Wellbore	Chumley Unit 2H AWB
Facility	Susie Jane Pad		

WELLPATH COMMENTS				
MD [ft]	Inclination [°]	Azimuth [°]	TVD [ft]	Comment
7820.02	75.794	164.830	7340.03	Marcellus POE