

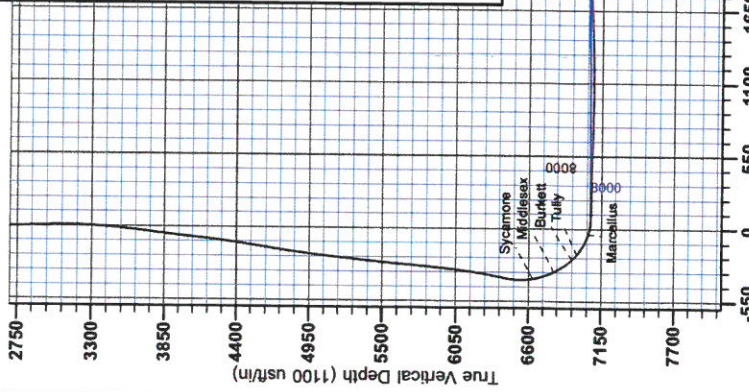
RECEIVED

JUN 26 2015

WV GEOLOGICAL SURVEY
MORGANTOWN, WV



Antero Resources
Farrow Unit 3H
Doddridge County WV
Northing: 14229702.20
Easting: 1725493.79
As Drilled



WELL DETAILS: Farrow Unit 3H
 Standard Level: 1006.0
 Easting: 1725493.79
 Northing: 14229702.20
 Slot

PROJECT DETAILS: Doddridge County WV
 Geographic System: Universal Transverse Mercator (US Survey Feet)
 Datum: NAD 1983 (NAD83 CONUS)
 Ellipsoid: Spheroid (WGS 84)
 Zone: Zone 17N (84 W to 78 W)
 System Datum: Mean Sea Level

REFERENCE INFORMATION
 Coordinate Reference: Mean Earth Surface
 Vertical Reference: Mean Sea Level
 Measured Depth Reference: Mean Sea Level
 Calculation Method: Minimum Curvature

Scientific Drilling
 Genie Lightfoot
 13:41, June 17 2014
 Scientific Drilling
 421 South Eagle Lane
 Oklahoma City, OK

LEGEND

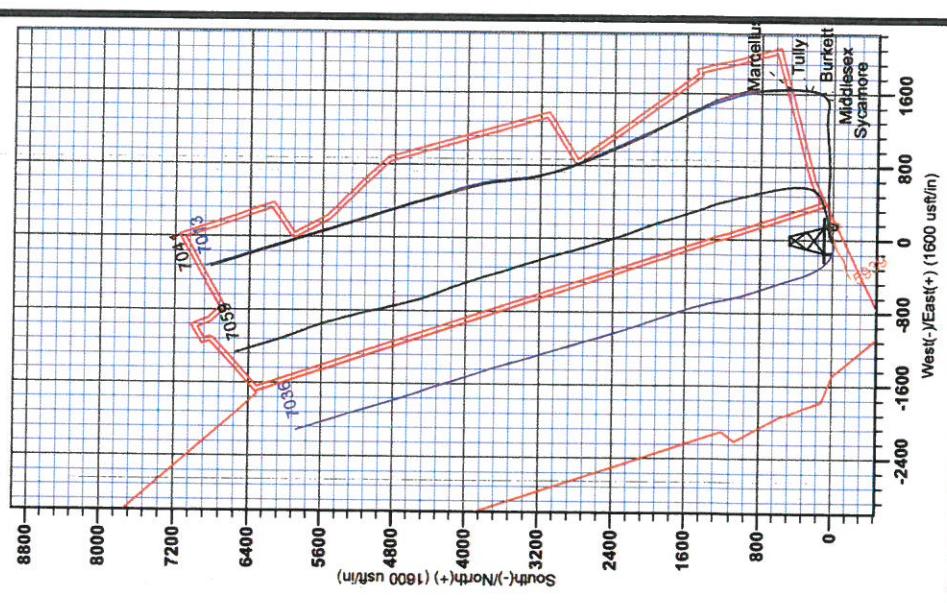
- Nickers Unit 3H, Original Wellpath, As Drilled VO
- Farrow Unit 2H, Original Wellpath, As Drilled VO
- Nickers Unit 2H, Original Wellpath, As Drilled VO
- Farrow Unit 3H, Original Wellpath, Plan 6 VO
- As Drilled

DESIGN TARGET DETAILS

Name	TVD	+N/S	+E/W	Northing	Easting	Latitude	Longitude
SHL Farrow Unit 3H	0.0	0.0	0.0	14229702.20	1725493.79	38° 11' 8.621 180° 41' 59.108 W	
Actual BHL Farrow Unit 3H	14253	6819.3	-328	314236621.50	1725165.239	12° 18.059 N 60° 42' 2.996 W	

To convert Magnetic North to Grid, Subtract 8.68"
 To convert True North to Grid, Subtract 0.18"

Magnetic Field
 Strength: 52.46 uT/mT
 Declination: 8.68°
 Date: 12/31/2013
 Model: IGRF2010



Vertical Section at 342.78° (1100 usf/m)



RECEIVED

JUN 26 2015

WV GEOLOGICAL SURVEY
MORGANTOWN, WV

Antero Resources

Doddridge County WV

Cline Pad /Nickers/ Farrow/ Gearhart/Carr

Farrow Unit 3H

Original Wellpath

Design: As Drilled

EOW Completion Report

17 June, 2014



JUN 26 2015



EOW Completion Report



Company:	Antero Resources	Local Co-ordinate Reference:	Well Farrow Unit 3H
Project:	Doddridge County WV	TVD Reference:	Farrow 3H 1096 GL + 24 KB @ 1120.0usft
Site:	Cline Pad /Nickers/ Farrow/ Gearhart/Carr	MD Reference:	Farrow 3H 1096 GL + 24 KB @ 1120.0usft
Well:	Farrow Unit 3H	North Reference:	Grid
Wellbore:	Original Wellpath	Survey Calculation Method:	Minimum Curvature
Design:	As Drilled	Database:	Oklahoma District

Project	Doddridge County WV, McClellan District		
Map System:	Universal Transverse Mercator (US Survey Feet)	System Datum:	Mean Sea Level
Geo Datum:	NAD 1927 (NADCON CONUS)		
Map Zone:	Zone 17N (84 W to 78 W)		

Site	Cline Pad /Nickers/ Farrow/ Gearhart/Carr				
Site Position:		Northing:	14,229,675.44 usft	Latitude:	39° 11' 8.355 N
From:	Map	Easting:	1,725,508.24 usft	Longitude:	80° 41' 58.926 W
Position Uncertainty:	0.0 usft	Slot Radius:	13-3/16"	Grid Convergence:	0.19 °

Well	Farrow Unit 3H, Marcellus					
Well Position	+N-S	0.0 usft	Northing:	14,229,702.20 usft	Latitude:	39° 11' 8.621 N
	+E-W	0.0 usft	Easting:	1,725,493.79 usft	Longitude:	80° 41' 59.108 W
Position Uncertainty		2.0 usft	Wellhead Elevation:	1,109.0 usft	Ground Level:	1,096.0 usft

Wellbore	Original Wellpath
-----------------	-------------------

Magnetics	Model Name	Sample Date	Declination (°)	Dip Angle (°)	Field Strength (nT)
	IGRF2010	12/31/2013	-8.49	66.76	52,288

Design	As Drilled
---------------	------------

Audit Notes:

Version:	1.0	Phase:	ACTUAL	Tie On Depth:	0.0
-----------------	-----	---------------	--------	----------------------	-----

Vertical Section:	Depth From (TVD) (usft)	+N-S (usft)	+E-W (usft)	Direction (°)
	0.0	0.0	0.0	342.78

Survey Program		Date			
From (usft)	To (usft)	6/17/2014	Survey (Wellbore)	Tool Name	Description
111.0	6,322.6		Survey #4 Def Gyro to KOP (Original Well)	SDI Standard Keeper	Scientific Drilling Intl. Standard Wireline Keeper
6,322.6	14,253.0		Survey #5 MWD (Original Wellpath)	SDI MWD	Scientific Drilling Intl. MWD - Standard ver 1.0.1

MD (usft)	Inc (°)	Azi (azimuth) (°)	TVD (usft)	N/S (usft)	E/W (usft)	V. Sec (usft)	DLeg (°/100usft)
0.0	0.00	0.00	0.0	0.0	0.0	0.0	0.00
111.0	0.10	219.91	111.0	-0.1	-0.1	-0.1	0.09
211.0	0.11	242.71	211.0	-0.2	-0.2	-0.1	0.04
311.0	0.07	238.97	311.0	-0.3	-0.3	-0.1	0.04
411.0	0.05	246.55	411.0	-0.3	-0.4	-0.2	0.02
511.0	0.12	223.28	511.0	-0.4	-0.5	-0.2	0.08
611.0	0.10	191.09	611.0	-0.6	-0.6	-0.4	0.06
711.0	0.13	194.71	711.0	-0.8	-0.7	-0.5	0.03
811.0	0.15	183.65	811.0	-1.0	-0.7	-0.7	0.03
911.0	0.13	188.77	911.0	-1.2	-0.7	-1.0	0.02
1,011.0	0.13	192.95	1,011.0	-1.5	-0.8	-1.2	0.01



EOW Completion Report



Company: Antero Resources
 Project: Doddridge County WV
 Site: Cline Pad /Nickers/ Farrow/ Gearhart/Carr
 Well: Farrow Unit 3H
 Wellbore: Original Wellpath
 Design: As Drilled

Local Co-ordinate Reference: Well Farrow Unit 3H
 TVD Reference: Farrow 3H 1096 GL + 24 KB @ 1120.0usft
 MD Reference: Farrow 3H 1096 GL + 24 KB @ 1120.0usft
 North Reference: Grid
 Survey Calculation Method: Minimum Curvature
 Database: Oklahoma District

Survey

MD (usft)	Inc (°)	Azi (azimuth) (°)	TVD (usft)	N/S (usft)	E/W (usft)	V. Sec (usft)	DLeg (°/100usft)
1,111.0	0.14	215.97	1,111.0	-1.7	-0.9	-1.3	0.05
1,211.0	0.16	201.46	1,211.0	-1.9	-1.0	-1.5	0.04
1,311.0	0.18	184.96	1,311.0	-2.2	-1.1	-1.8	0.05
1,411.0	0.21	178.35	1,411.0	-2.5	-1.1	-2.1	0.04
1,511.0	0.10	169.45	1,511.0	-2.8	-1.1	-2.4	0.11
1,611.0	0.06	205.14	1,611.0	-2.9	-1.1	-2.5	0.06
1,711.0	0.09	177.23	1,711.0	-3.1	-1.1	-2.6	0.05
1,811.0	0.08	218.82	1,811.0	-3.2	-1.1	-2.7	0.06
1,911.0	0.13	85.51	1,911.0	-3.2	-1.1	-2.8	0.19
2,011.0	0.15	112.20	2,011.0	-3.3	-0.8	-2.9	0.07
2,111.0	0.24	143.39	2,111.0	-3.5	-0.6	-3.2	0.14
2,211.0	0.21	135.83	2,211.0	-3.8	-0.3	-3.5	0.04
2,311.0	0.31	146.73	2,311.0	-4.2	0.0	-4.0	0.11
2,411.0	0.26	135.02	2,411.0	-4.5	0.3	-4.4	0.08
2,511.0	0.20	176.69	2,511.0	-4.9	0.4	-4.8	0.17
2,611.0	0.07	220.93	2,611.0	-5.1	0.4	-5.0	0.16
2,711.0	1.73	42.49	2,711.0	-4.0	1.4	-4.3	1.80
2,811.0	6.11	54.33	2,810.7	0.2	6.7	-1.8	4.43
2,911.0	8.31	62.35	2,909.9	6.6	17.5	1.2	2.41
3,011.0	9.92	67.05	3,008.7	13.4	31.8	3.4	1.77
3,111.0	10.78	70.99	3,107.0	19.8	48.6	4.5	1.11
3,211.0	12.75	77.11	3,204.9	25.3	68.2	4.0	2.33
3,311.0	15.66	84.37	3,301.9	29.1	92.4	0.4	3.41
3,411.0	19.04	85.42	3,397.3	31.7	122.1	-5.9	3.39
3,511.0	22.26	87.03	3,490.9	34.0	157.2	-14.1	3.27
3,611.0	23.52	88.59	3,583.0	35.4	196.1	-24.2	1.40
3,711.0	24.21	86.88	3,674.4	37.1	236.5	-34.6	0.98
3,811.0	25.13	87.34	3,765.3	39.2	278.2	-45.0	0.94
3,911.0	25.00	87.65	3,855.9	41.0	320.5	-55.7	0.18
4,011.0	23.96	87.68	3,946.9	42.7	361.9	-66.4	1.04
4,111.0	22.67	86.42	4,038.7	44.7	401.5	-76.1	1.38
4,211.0	22.49	87.55	4,131.1	46.7	439.8	-85.6	0.47
4,311.0	22.86	88.72	4,223.3	48.0	478.3	-95.8	0.58
4,411.0	23.01	91.52	4,315.4	47.9	517.3	-107.4	1.10
4,511.0	23.29	92.74	4,407.4	46.4	556.6	-120.4	0.56
4,611.0	23.77	92.86	4,499.1	44.5	596.5	-134.1	0.48
4,711.0	24.70	93.24	4,590.3	42.3	637.4	-148.3	0.94
4,811.0	25.03	93.44	4,681.0	39.9	679.4	-163.1	0.34
4,911.0	25.47	89.70	4,771.4	38.7	722.0	-176.8	1.65
5,011.0	24.58	89.48	4,862.1	39.0	764.3	-189.0	0.89
5,111.0	24.90	88.84	4,952.9	39.6	806.2	-200.8	0.42
5,211.0	25.16	86.78	5,043.5	41.2	848.5	-211.8	0.91
5,311.0	24.87	85.97	5,134.1	43.9	890.7	-221.7	0.45
5,411.0	24.86	86.60	5,224.8	46.6	932.6	-231.6	0.27

JUN 26 2015



WV GEOLOGICAL SURVEY
MORGANTOWN, WV

EOW Completion Report



Company: Antero Resources
Project: Doddridge County WV
Site: Cline Pad /Nickers/ Farrow/ Gearhart/Carr
Well: Farrow Unit 3H
Wellbore: Original Wellpath
Design: As Drilled

Local Co-ordinate Reference: Well Farrow Unit 3H
TVD Reference: Farrow 3H 1096 GL + 24 KB @ 1120.0usft
MD Reference: Farrow 3H 1096 GL + 24 KB @ 1120.0usft
North Reference: Grid
Survey Calculation Method: Minimum Curvature
Database: Oklahoma District

Survey

MD (usft)	Inc (°)	Azi (azimuth) (°)	TVD (usft)	N/S (usft)	E/W (usft)	V. Sec (usft)	DLeg (°/100usft)
5,511.0	24.25	87.00	5,315.8	49.0	974.1	-241.6	0.63
5,611.0	24.24	86.31	5,407.0	51.4	1,015.1	-251.5	0.28
5,711.0	24.16	85.53	5,498.2	54.3	1,056.0	-260.8	0.33
5,811.0	23.86	84.54	5,589.5	57.8	1,096.5	-269.4	0.50
5,911.0	23.55	84.32	5,681.1	61.7	1,136.5	-277.5	0.32
6,011.0	23.60	85.20	5,772.8	65.3	1,176.4	-285.8	0.36
6,111.0	22.57	86.77	5,864.7	68.1	1,215.5	-294.8	1.20
6,211.0	22.61	88.31	5,957.1	69.7	1,253.9	-304.6	0.59
6,311.0	22.76	89.63	6,049.3	70.4	1,292.4	-315.3	0.53
6,322.6	22.84	89.82	6,060.1	70.5	1,296.9	-316.6	0.93
6,414.0	23.19	87.36	6,144.2	71.3	1,332.6	-326.4	1.12
6,508.0	23.27	96.86	6,230.6	70.0	1,369.6	-338.6	3.98
6,602.0	25.93	97.94	6,316.0	64.9	1,408.4	-354.9	2.87
6,696.0	24.55	98.38	6,401.1	59.2	1,448.0	-372.1	1.48
6,728.0	23.94	99.19	6,430.2	57.2	1,461.0	-377.9	2.17
6,759.0	23.66	93.58	6,458.6	55.8	1,473.4	-382.9	7.36
6,790.0	24.36	85.92	6,486.9	55.9	1,486.0	-386.5	10.30
6,822.0	25.39	77.79	6,516.0	57.8	1,499.3	-388.6	11.15
6,853.0	25.14	71.03	6,544.0	61.4	1,512.0	-389.0	9.34
6,884.0	26.38	65.54	6,571.9	66.4	1,524.5	-387.9	8.67
6,916.0	25.96	58.89	6,600.7	72.9	1,537.0	-385.4	9.25
6,947.0	26.61	52.52	6,628.5	80.7	1,548.3	-381.3	9.33
6,953.0	26.79	51.72	6,633.8	82.3	1,550.5	-380.4	6.74
Sycamore							
6,978.0	27.60	48.48	6,656.0	89.6	1,559.2	-376.0	6.74
7,010.0	29.21	44.50	6,684.2	100.1	1,570.2	-369.2	7.76
7,041.0	30.74	38.14	6,711.1	111.8	1,580.4	-361.1	11.37
7,072.0	30.92	34.22	6,737.7	124.6	1,589.8	-351.7	6.51
7,104.0	31.52	30.43	6,765.0	138.6	1,598.7	-340.9	6.42
7,135.0	33.74	25.62	6,791.2	153.3	1,606.5	-329.1	11.01
7,138.0	33.90	25.28	6,793.7	154.9	1,607.2	-327.9	8.14
Middlesex							
7,166.0	35.40	22.27	6,816.7	169.4	1,613.6	-315.9	8.14
7,198.0	37.39	17.91	6,842.4	187.2	1,620.1	-300.8	10.20
7,229.0	39.29	13.79	6,866.8	205.7	1,625.4	-284.7	10.27
7,260.0	41.38	11.80	6,890.4	225.3	1,629.8	-267.3	7.92
7,292.0	44.83	9.71	6,913.8	246.8	1,633.9	-248.0	11.67
7,314.0	47.35	8.40	6,929.0	262.4	1,636.4	-233.8	12.21
Burkett							
7,323.0	48.38	7.90	6,935.1	269.0	1,637.3	-227.7	12.21
7,355.0	51.09	7.04	6,955.7	293.2	1,640.5	-205.5	8.71
7,368.0	52.54	6.20	6,963.8	303.4	1,641.7	-196.2	12.24
Tully							
7,386.0	54.55	5.08	6,974.5	317.8	1,643.1	-182.9	12.24
7,417.0	57.84	3.27	6,991.7	343.5	1,644.9	-158.9	11.67

RECEIVED

JUN 26 2015



EOW Completion Report



Company: Antero Resources
 Project: Doddridge County WV
 Site: Cline Pad /Nickers/ Farrow/ Gearhart/Carr
 Well: Farrow Unit 3H
 Wellbore: Original Wellpath
 Design: As Drilled

Local Co-ordinate Reference: Well Farrow Unit 3H
 TVD Reference: Farrow 3H 1096 GL + 24 KB @ 1120.0usft
 MD Reference: Farrow 3H 1096 GL + 24 KB @ 1120.0usft
 North Reference: Grid
 Survey Calculation Method: Minimum Curvature
 Database: Oklahoma District

Survey

MD (usft)	Inc (°)	Azi (azimuth) (°)	TVD (usft)	N/S (usft)	E/W (usft)	V. Sec (usft)	DLeg (°/100usft)
7,448.0	60.61	2.67	7,007.6	370.1	1,646.3	-133.9	9.09
7,480.0	65.00	1.15	7,022.2	398.5	1,647.3	-107.0	14.35
7,511.0	68.29	359.31	7,034.5	427.0	1,647.4	-79.8	11.93
7,542.0	71.52	358.29	7,045.1	456.1	1,646.8	-51.9	10.87
7,554.0	73.18	357.95	7,048.8	467.5	1,646.4	-40.8	14.07
Marcellus							
7,574.0	75.94	357.40	7,054.1	486.8	1,645.6	-22.2	14.07
7,605.0	80.22	357.24	7,060.5	517.1	1,644.2	7.1	13.82
7,637.0	82.62	357.63	7,065.3	548.7	1,642.8	37.7	7.60
7,668.0	86.08	357.48	7,068.3	579.5	1,641.5	67.6	11.17
7,790.0	90.17	358.09	7,072.3	701.3	1,636.7	185.3	3.39
7,884.0	90.60	359.02	7,071.7	795.3	1,634.4	275.8	1.09
7,978.0	89.23	357.15	7,071.8	889.2	1,631.2	366.4	2.47
8,072.0	87.85	351.35	7,074.2	982.7	1,621.8	458.5	6.34
8,166.0	87.44	345.44	7,078.1	1,074.6	1,602.9	551.9	6.30
8,260.0	86.88	338.03	7,082.7	1,163.7	1,573.5	645.7	7.90
8,354.0	92.35	334.63	7,083.4	1,249.8	1,535.8	739.1	6.85
8,448.0	88.83	335.93	7,082.4	1,335.1	1,496.5	832.3	3.99
8,542.0	87.45	334.14	7,085.5	1,420.3	1,456.9	925.3	2.40
8,637.0	90.30	331.78	7,087.3	1,504.9	1,413.7	1,018.9	3.89
8,731.0	91.74	334.27	7,085.7	1,588.6	1,371.1	1,111.5	3.06
8,825.0	90.20	333.49	7,084.1	1,673.0	1,329.7	1,204.4	1.84
8,919.0	91.45	332.67	7,082.7	1,756.8	1,287.1	1,297.0	1.59
9,014.0	90.87	331.87	7,080.8	1,840.9	1,242.9	1,390.4	1.04
9,107.0	90.77	331.24	7,079.5	1,922.7	1,198.6	1,481.6	0.69
9,201.0	94.30	333.29	7,075.3	2,005.8	1,155.0	1,573.9	4.34
9,296.0	93.63	335.13	7,068.7	2,091.1	1,113.7	1,667.6	2.06
9,390.0	91.38	337.25	7,064.6	2,177.0	1,075.8	1,760.9	3.29
9,484.0	91.62	335.39	7,062.2	2,263.0	1,038.1	1,854.3	1.99
9,579.0	91.95	335.53	7,059.2	2,349.4	998.6	1,948.5	0.38
9,673.0	90.74	336.96	7,057.0	2,435.4	960.8	2,041.8	1.99
9,767.0	90.40	337.15	7,056.1	2,522.0	924.1	2,135.4	0.41
9,861.0	89.50	336.78	7,056.1	2,608.5	887.4	2,228.9	1.04
9,955.0	91.68	337.28	7,055.2	2,695.0	850.7	2,322.4	2.38
10,046.0	90.13	340.43	7,053.7	2,779.9	817.9	2,413.1	3.86
10,137.0	91.17	341.16	7,052.7	2,865.8	787.9	2,504.1	1.40
10,228.0	91.74	343.59	7,050.4	2,952.5	760.4	2,595.0	2.74
10,320.0	89.70	340.35	7,049.2	3,040.0	731.9	2,687.0	4.16
10,410.0	92.01	342.01	7,047.9	3,125.1	702.9	2,777.0	3.16
10,501.0	93.59	346.56	7,043.4	3,212.6	678.3	2,867.8	5.29
10,593.0	91.61	350.10	7,039.3	3,302.6	659.7	2,959.2	4.41
10,684.0	89.60	352.95	7,038.3	3,392.6	646.3	3,049.2	3.83
10,775.0	89.20	353.28	7,039.3	3,482.9	635.4	3,138.7	0.57
10,866.0	91.17	353.87	7,039.0	3,573.3	625.2	3,228.1	2.26
10,956.0	90.03	353.36	7,038.0	3,662.8	615.2	3,316.5	1.39

RECEIVED

JUN 26 2015



LOGICAL SURVEY
MORGANTOWN, WV

EOW Completion Report



Company: Antero Resources
Project: Doddridge County WV
Site: Cline Pad /Nickers/ Farrow/ Gearhart/Carr
Well: Farrow Unit 3H
Wellbore: Original Wellpath
Design: As Drilled

Local Co-ordinate Reference: Well Farrow Unit 3H
TVD Reference: Farrow 3H 1096 GL + 24 KB @ 1120.0usft
MD Reference: Farrow 3H 1096 GL + 24 KB @ 1120.0usft
North Reference: Grid
Survey Calculation Method: Minimum Curvature
Database: Oklahoma District

Survey

MD (usft)	Inc (°)	Azi (azimuth) (°)	TVD (usft)	N/S (usft)	E/W (usft)	V. Sec (usft)	DLeg (°/100usft)
11,049.0	90.30	351.19	7,037.8	3,754.9	602.7	3,408.2	2.35
11,143.0	88.59	346.42	7,038.7	3,847.1	584.4	3,501.6	5.39
11,237.0	89.87	344.25	7,039.9	3,938.0	560.7	3,595.5	2.68
11,331.0	89.80	343.80	7,040.2	4,028.4	534.8	3,689.5	0.48
11,425.0	89.63	344.19	7,040.7	4,118.7	508.9	3,783.5	0.45
11,520.0	89.77	344.47	7,041.2	4,210.2	483.2	3,878.4	0.33
11,614.0	88.26	344.49	7,042.8	4,300.8	458.1	3,972.4	1.61
11,708.0	88.96	344.62	7,045.1	4,391.3	433.0	4,066.3	0.76
11,802.0	89.43	343.87	7,046.4	4,481.8	407.5	4,160.3	0.94
11,896.0	89.36	343.38	7,047.4	4,572.0	381.0	4,254.2	0.53
11,990.0	89.70	342.14	7,048.1	4,661.8	353.2	4,348.2	1.37
12,084.0	89.20	341.45	7,049.0	4,751.0	323.8	4,442.2	0.91
12,178.0	88.66	341.84	7,050.8	4,840.2	294.2	4,536.2	0.71
12,272.0	91.84	342.53	7,050.4	4,929.7	265.4	4,630.2	3.46
12,367.0	90.60	343.86	7,048.4	5,020.6	238.0	4,725.1	1.91
12,461.0	90.44	343.19	7,047.5	5,110.8	211.3	4,819.1	0.73
12,555.0	89.70	341.78	7,047.4	5,200.4	183.0	4,913.1	1.69
12,649.0	90.60	343.10	7,047.2	5,290.0	154.7	5,007.1	1.70
12,742.0	90.67	342.71	7,046.1	5,378.9	127.3	5,100.1	0.43
12,836.0	89.93	343.28	7,045.6	5,468.8	99.9	5,194.1	0.99
12,931.0	89.36	343.09	7,046.2	5,559.7	72.4	5,289.1	0.63
13,025.0	90.07	342.51	7,046.7	5,649.5	44.6	5,383.1	0.98
13,119.0	90.23	342.15	7,046.4	5,739.1	16.0	5,477.1	0.42
13,213.0	90.20	342.46	7,046.1	5,828.7	-12.5	5,571.1	0.33
13,306.0	89.97	342.96	7,046.0	5,917.5	-40.2	5,664.1	0.59
13,401.0	89.60	343.54	7,046.3	6,008.4	-67.5	5,759.1	0.72
13,495.0	88.93	342.98	7,047.5	6,098.4	-94.6	5,853.1	0.93
13,589.0	89.66	342.90	7,048.7	6,188.3	-122.2	5,947.1	0.78
13,683.0	90.91	341.45	7,048.2	6,277.8	-151.0	6,041.1	2.04
13,777.0	89.93	340.77	7,047.5	6,366.7	-181.4	6,135.0	1.27
13,871.0	91.85	342.51	7,046.1	6,455.9	-211.0	6,229.0	2.76
13,965.0	91.34	342.27	7,043.4	6,545.5	-239.4	6,322.9	0.60
14,059.0	90.84	341.92	7,041.7	6,634.9	-268.3	6,416.9	0.65
14,153.0	90.23	341.86	7,040.8	6,724.2	-297.5	6,510.9	0.65
14,197.0	89.80	341.96	7,040.8	6,766.1	-311.2	6,554.9	1.00
14,253.0	89.80	341.96	7,041.0	6,819.3	-328.5	6,610.9	0.00

RECEIVED

JUN 26 2015



EOW Completion Report



Company: Antero Resources
Project: Doddridge County WV
Site: Cline Pad /Nickers/ Farrow/ Gearhart/Carr
Well: Farrow Unit 3H
Wellbore: Original Wellpath
Design: As Drilled

Local Co-ordinate Reference: Well Farrow Unit 3H
TVD Reference: Farrow 3H 1096 GL + 24 KB @ 1120.0usft
MD Reference: Farrow 3H 1096 GL + 24 KB @ 1120.0usft
North Reference: Grid
Survey Calculation Method: Minimum Curvature
Database: Oklahoma District

Design Annotations

Measured Depth (usft)	Vertical Depth (usft)	Local Coordinates		Comment
		+N/-S (usft)	+E/-W (usft)	
6,953.0	6,633.8	82.3	1,550.5	Sycamore
7,138.0	6,793.7	154.9	1,607.2	Middlesex
7,314.0	6,929.0	262.4	1,636.4	Burkett
7,368.0	6,963.8	303.4	1,641.7	Tully
7,554.0	7,048.8	467.5	1,646.4	Marcellus

Checked By: _____ Approved By: _____ Date: _____